

UPHOLSTERY OPTIONS

BOBA SOFA



APOLLO

FABRIC TYPE	COMPOSITION	DURABILITY	LIGHTFASTNESS	PILLING	FEATURES	FIRE TESTS
Chenille	100% Polyester	100,000 Martindale	4 - 5	4 - 5	Anti-Stain Liquid Repellent	BS 5852 part 1 - Cigarette Test PASS EN 1021-1 - Cigarette Test PASS CA Tech. Bull. 117:2013 / NFPA 260 - Cigarette Test PASS



BLUEWORLD[®]
HUMAN CARE TECHNOLOGY



STANDARD
100
9342CIT
CITEVE

Caution: the displayed colours, due to technical matters, are approximate and may differ from the original



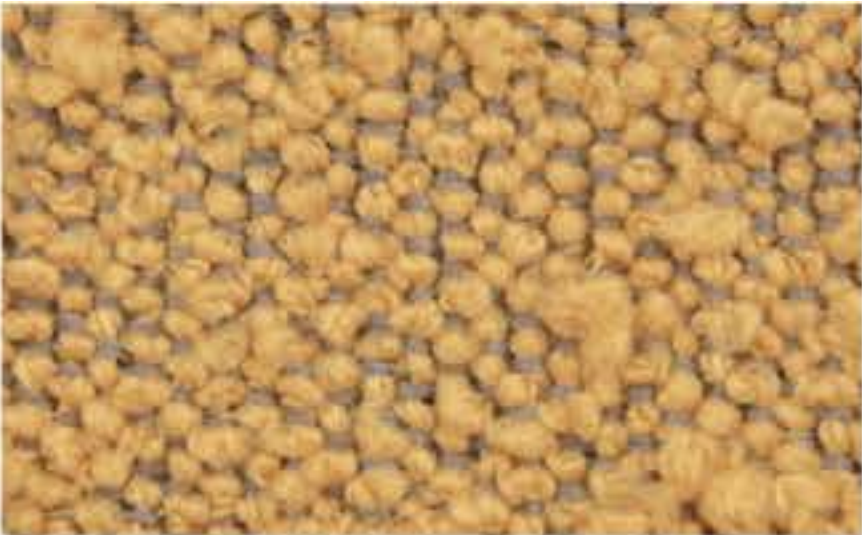
Nata



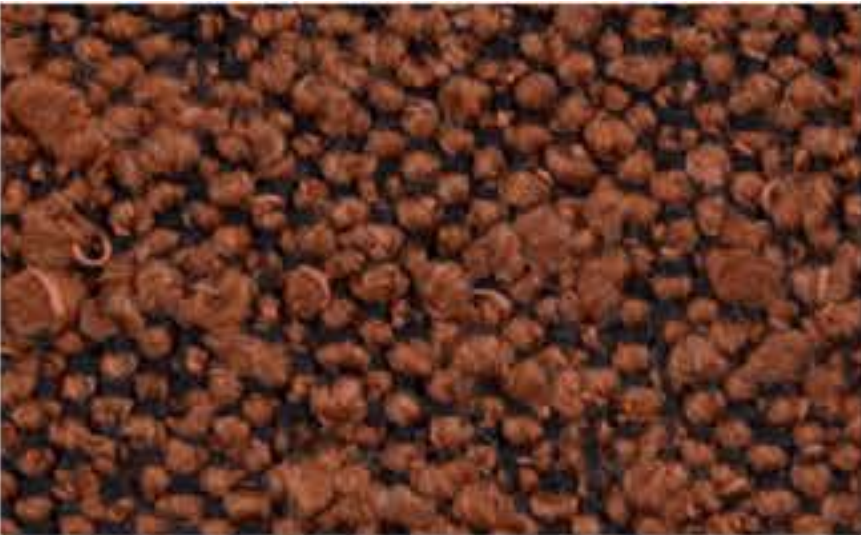
Pearl



Champagne



Mostaza



Brick



Pink



Toffee



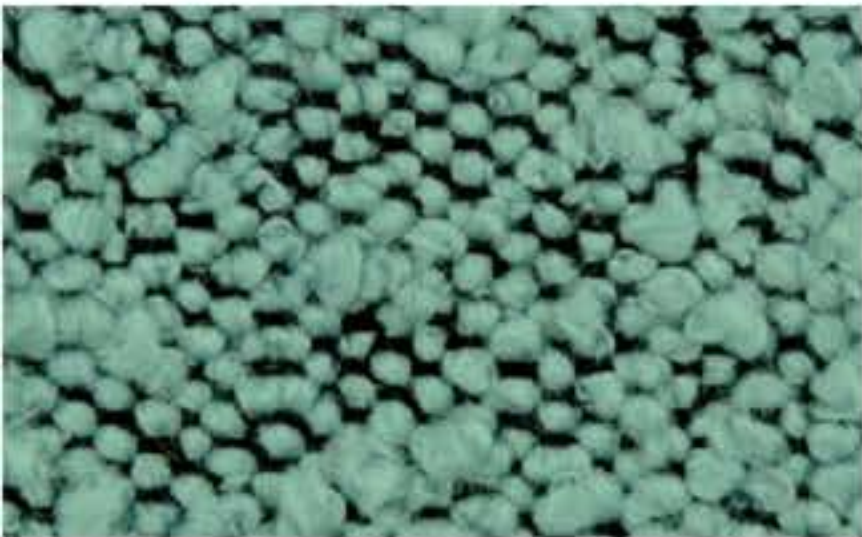
Taupe



Mouse



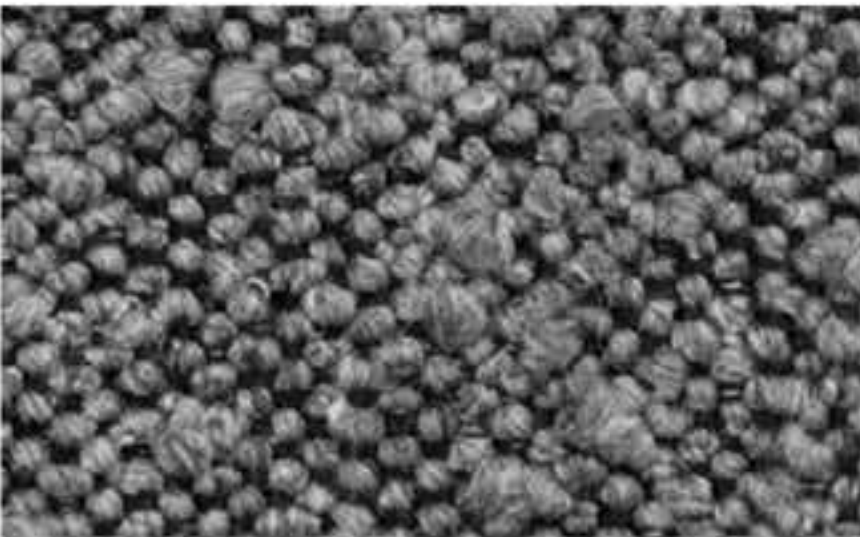
Olive Green



Safira



Atlantic



Graphite



Black

ASCOT

FABRIC TYPE	COMPOSITION	DURABILITY	LIGHTFASTNESS	PILLING	FIRE TESTS
Bouclé	100% Polyester	80,000 Martindale	5	4	BS 5852 part 1 - Cigarette Test PASS EN 1021-1 - Cigarette Test PASS CA Tech. Bull. 117:2013 / NFPA 260 - Cigarette Test PASS



BLUEWORLD[®]

HUMAN CARE TECHNOLOGY



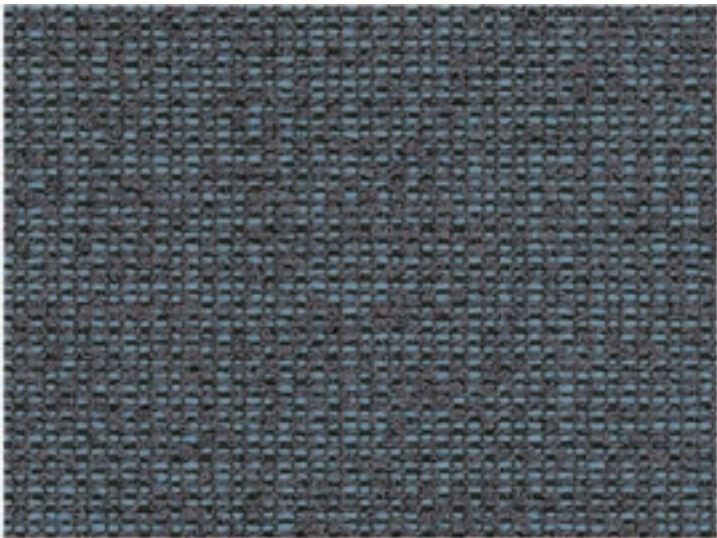
STANDARD 100

9342CIT CITEVE

Caution: the displayed colours, due to technical matters, are approximate and may differ from the original



Saturation



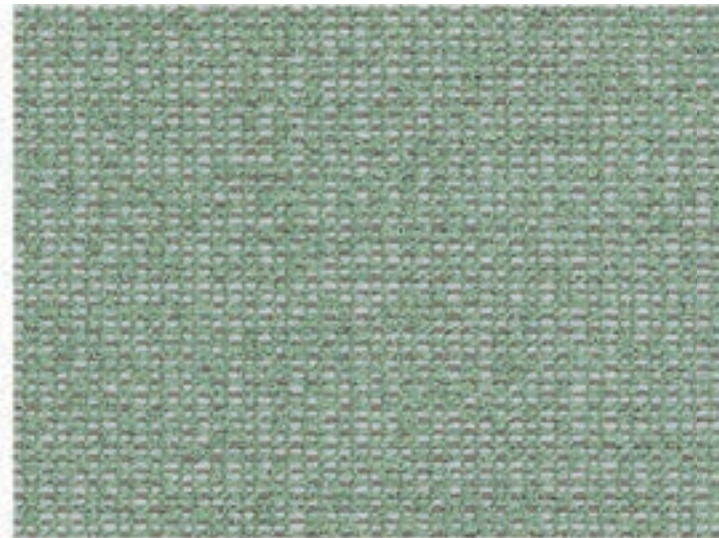
Tempera



Purity



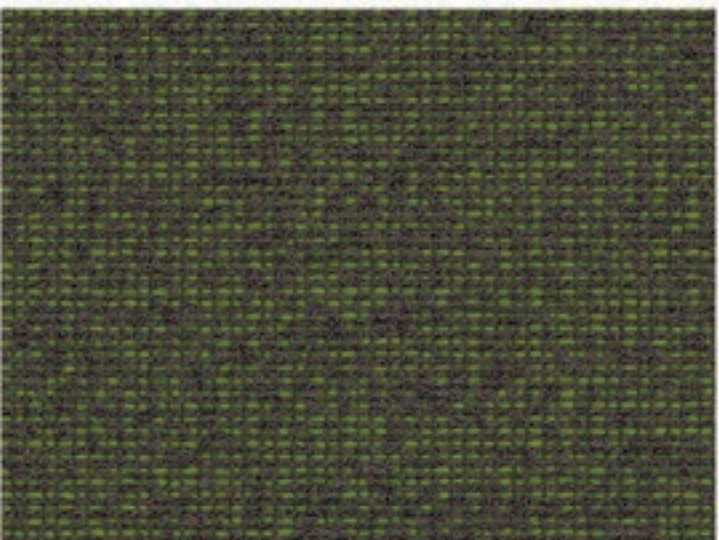
Prism



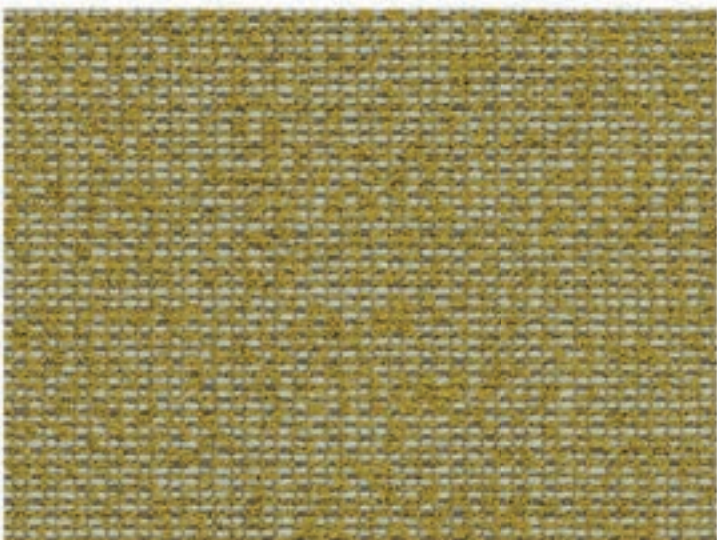
Gamut



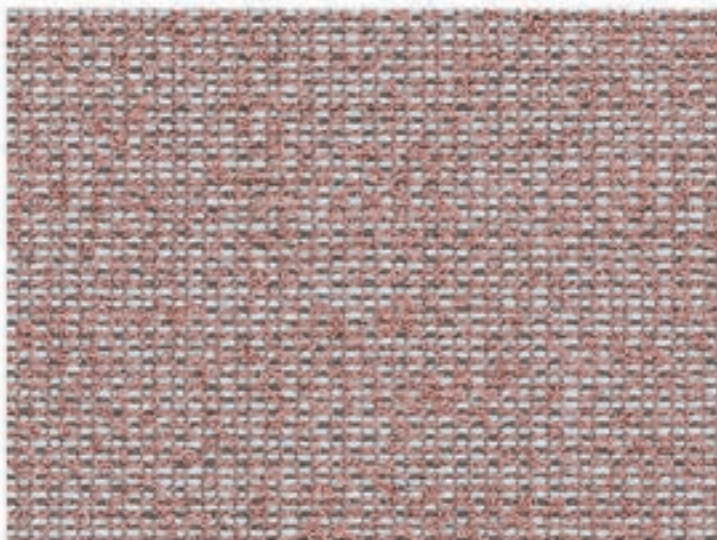
Tone



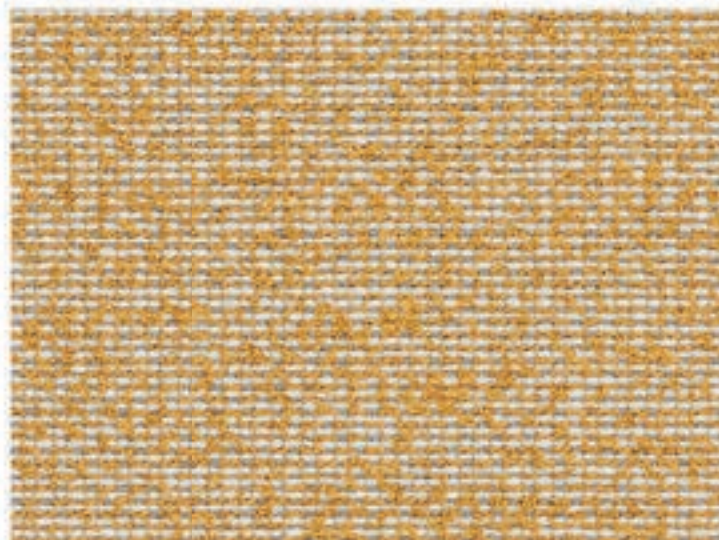
Goethe



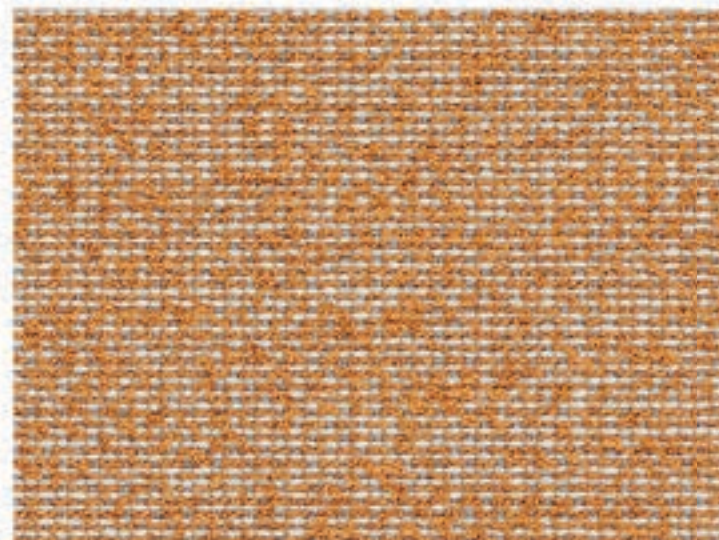
Hue



Pigment



Glow



Newton



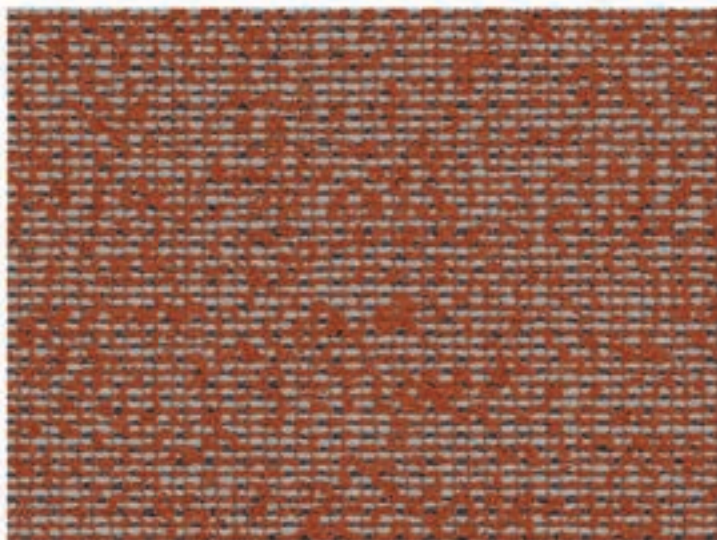
Dark



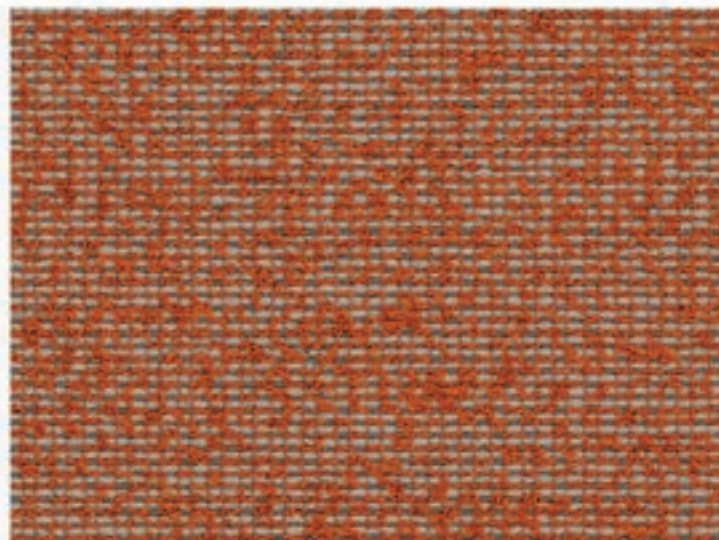
Hint



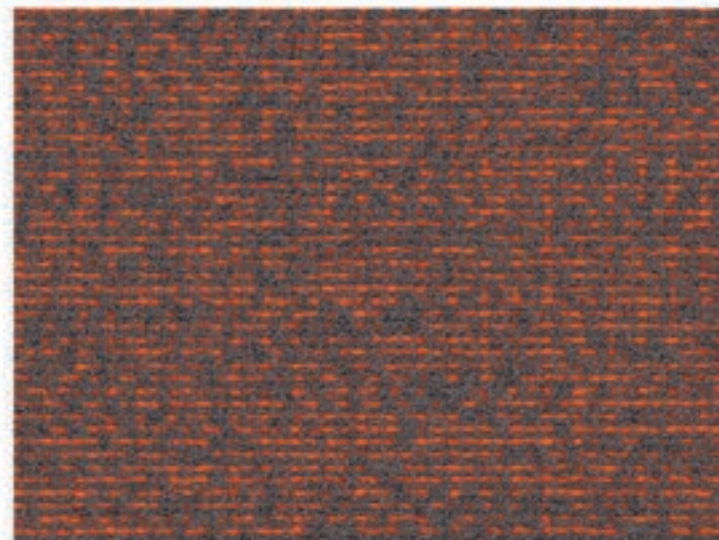
Trace



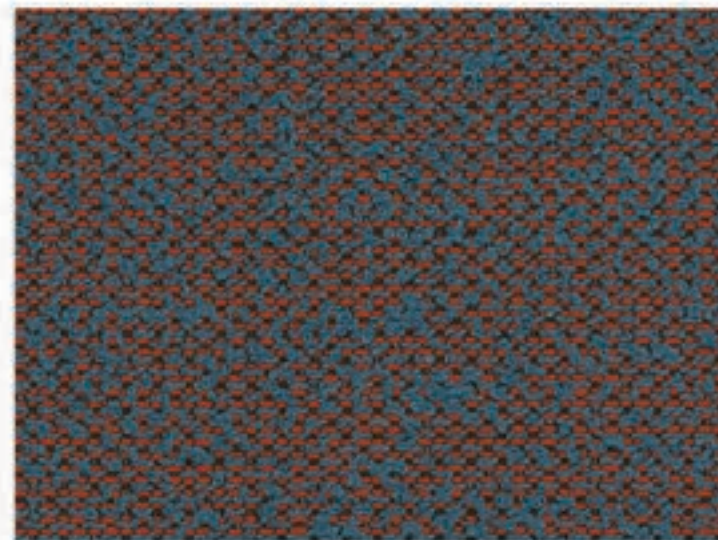
Render



Diad



Radiance



Harlequin

AUCKLAND
By Vescom



FABRIC TYPE	COMPOSITION	DURABILITY	LIGHTFASTNESS	PILLING	FIRE TESTS
Bouclé	76% Recycled Polyester FR 24% Polyester FR	60,000 Martindale	6	4	EN 1021/1-2, Pass; BS 5852, Crib 5; NF P 92/503-507 or NF D 60-013, M1 DIN 4102, B1 Cal TB 117-2013, section 1, Pass; IMO 2010 FTP part 8, Pass; NFPA 260, Class 1

Caution: the displayed colours, due to technical matters, are approximate and may differ from the original



BALTIC

FABRIC TYPE	COMPOSITION	DURABILITY	LIGHTFASTNESS	PILLING	FEATURES	FIRE TESTS
Chenille	100% Polyester	35,000 Martindale	5	4	Anti-Stain	BS 5852 part 1 - Cigarette Test PASS EN 1021-1 - Cigarette Test PASS CA Tech. Bull. 117:2013 / NFPA 260 - Cigarette Test PASS



BLUEWORLD[®]
HUMAN CARE TECHNOLOGY



STANDARD
100
9342CIT
CITEVE

Caution: the displayed colours, due to technical matters, are approximate and may differ from the original



White



Sand



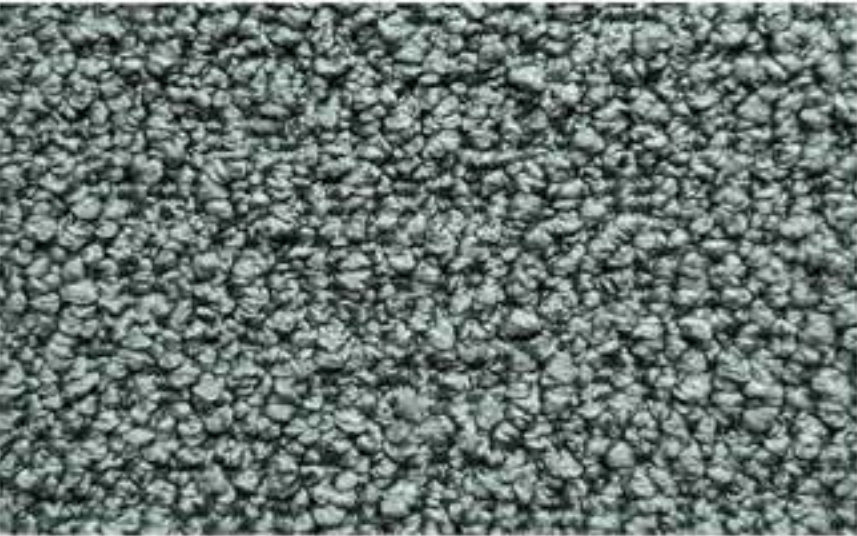
Pale Rose



Paprika



Cinnamon



Aqua



Pine



Hunter



Dark Forest



Fossil



Pebble



Dove



Stone



Shadow



Charcoal

BOUCLÉ

FABRIC TYPE	COMPOSITION	DURABILITY	LIGHTFASTNESS	PILLING
Bouclé	100% Polyester	80,000 Martindale	3	4

Caution: the displayed colours, due to technical matters, are approximate and may differ from the original



BROOKLYN

FABRIC TYPE	COMPOSITION	DURABILITY	LIGHTFASTNESS	PILLING	FEATURES	FIRE TESTS
Chenille	94% Polyester + 6% Nylon	50,000 Martindale	3 -4	4 - 5	Anti-Stain	BS 5852 part 1 - Cigarette Test PASS EN 1021-1 - Cigarette Test PASS CA Tech. Bull. 117:2013 / NFPA 260 - Cigarette Test PASS



Caution: the displayed colours, due to technical matters, are approximate and may differ from the original

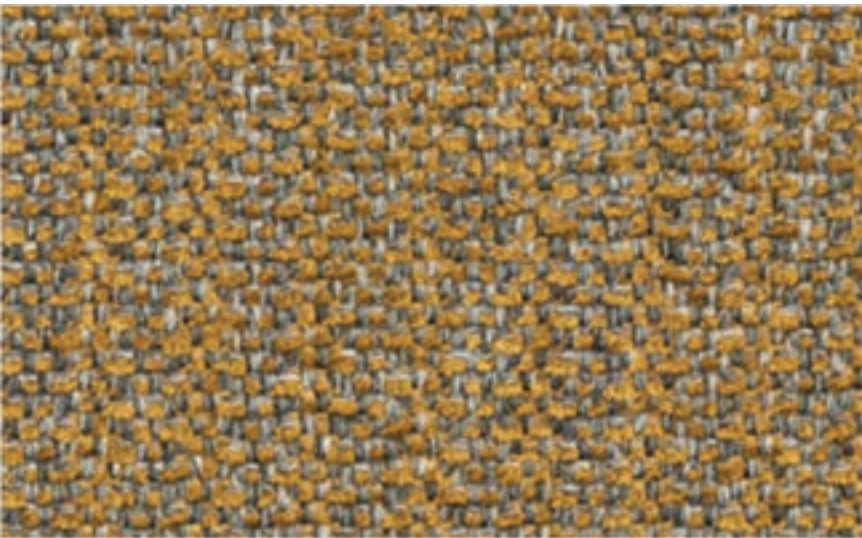


CASINO

FABRIC TYPE	COMPOSITION	DURABILITY	LIGHTFASTNESS	PILLING	FEATURES	FIRE TESTS
Velvet - Matte Finish	100% Polyester	100,000 Martindale	4 - 5	4 - 5	Anti-Stain Pet Friendly	BS 5852 part 1 - Cigarette Test PASS EN 1021-1 - Cigarette Test PASS CA Tech. Bull. 117:2013 / NFPA 260 - Cigarette Test PASS



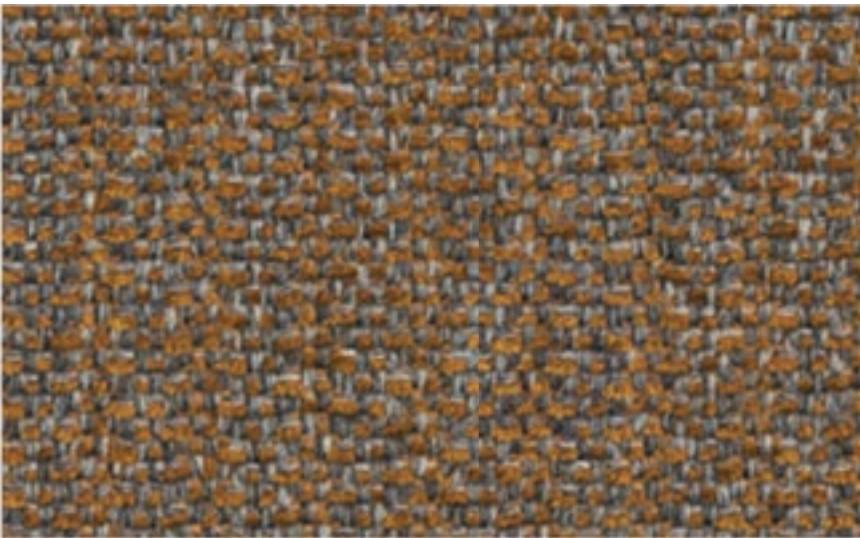
Caution: the displayed colours, due to technical matters, are approximate and may differ from the original



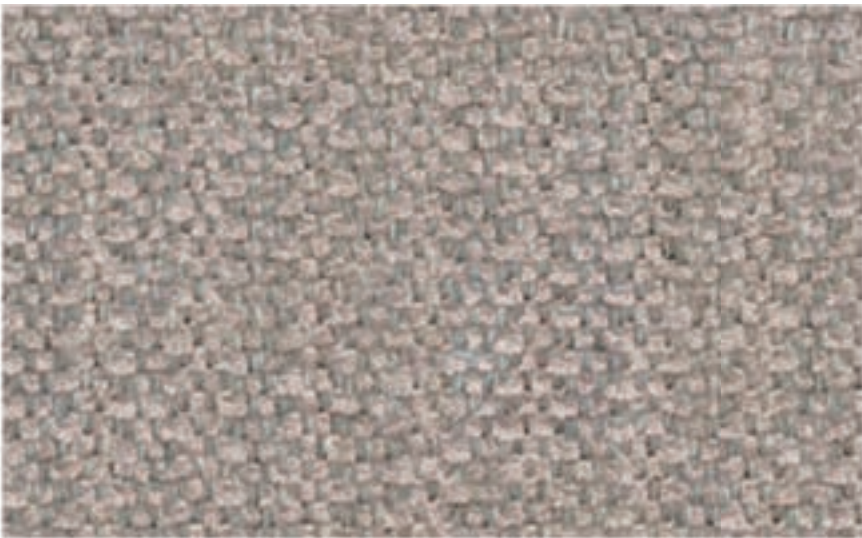
Fortress



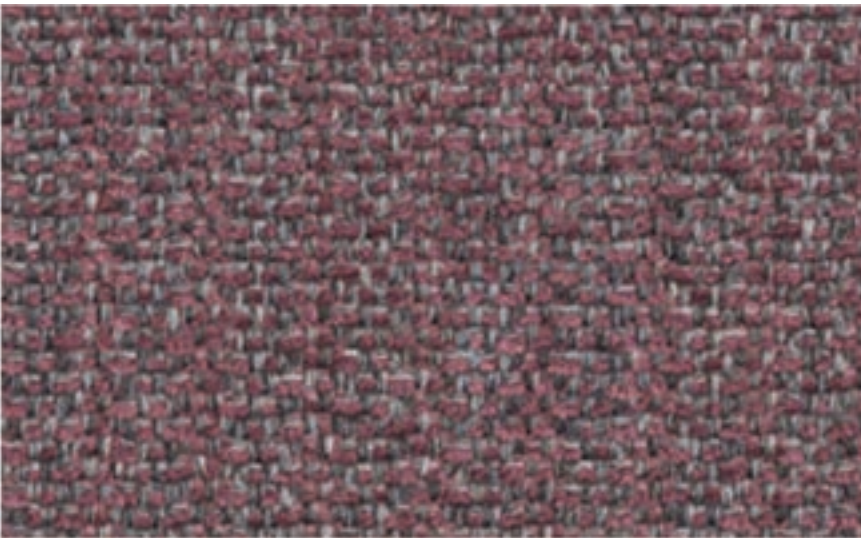
Beacon



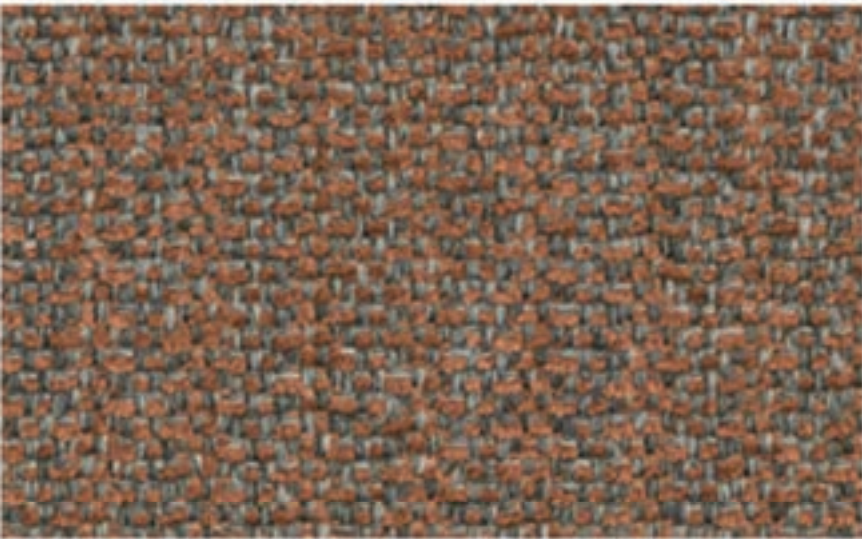
Redoubt



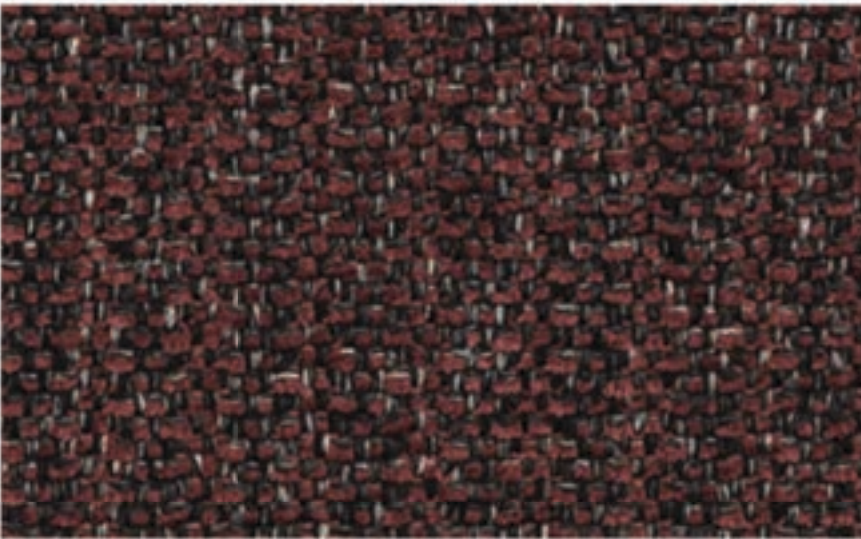
Drawbridge



Augusta



Hideaway



Hamilton



Resistance



Stillwater



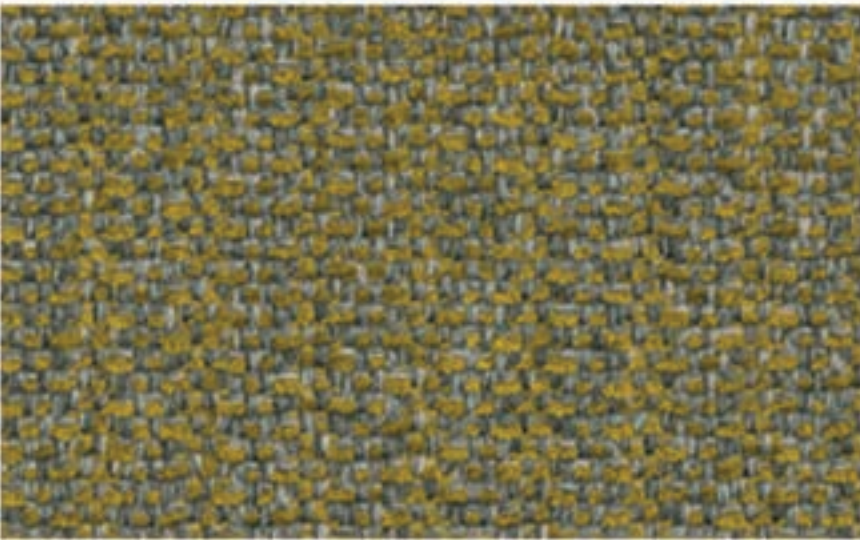
Confine



Craven



Ralstone



Bingham



Abide

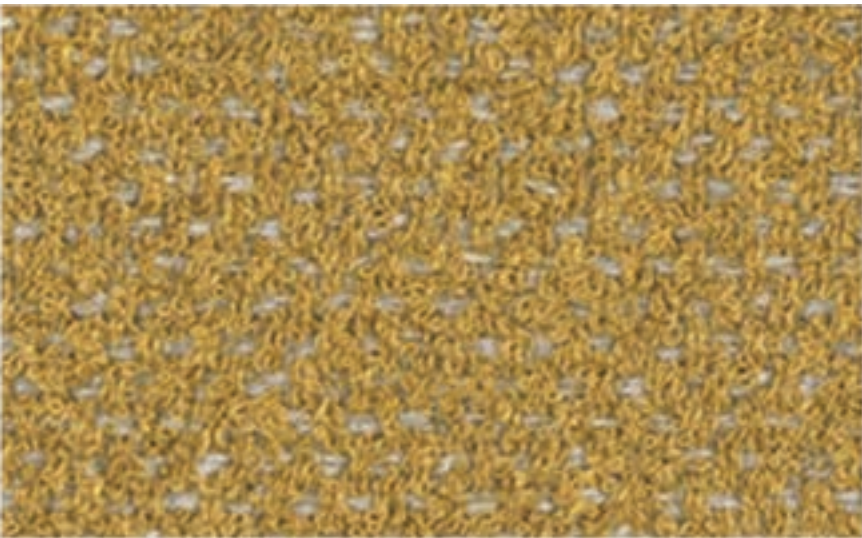
DIKSON

By Vescom

FABRIC TYPE	COMPOSITION	DURABILITY	LIGHTFASTNESS	PILLING	FIRE TESTS
Chenille	100% Polyester	100,000 Martindale	6	4 - 5	EN 1021/1-2, Pass; BS 5852, Crib 5; NF P 92/503-507 or NF D 60-013, M1 DIN 4102, B1 Cal TB 117-2013, section 1, Pass; IMO 2010 FTP part 8, Pass; NFPA 260, Class 1



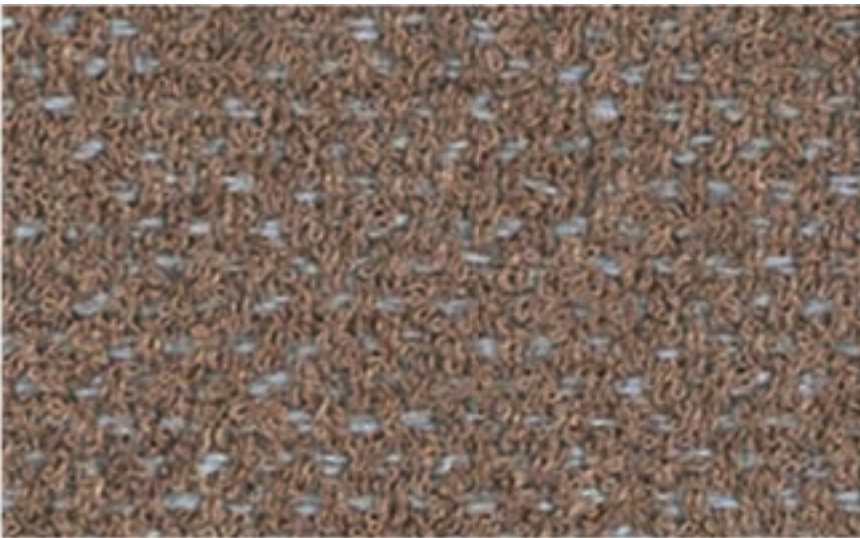
Caution: the displayed colours, due to technical matters, are approximate and may differ from the original



Caponex



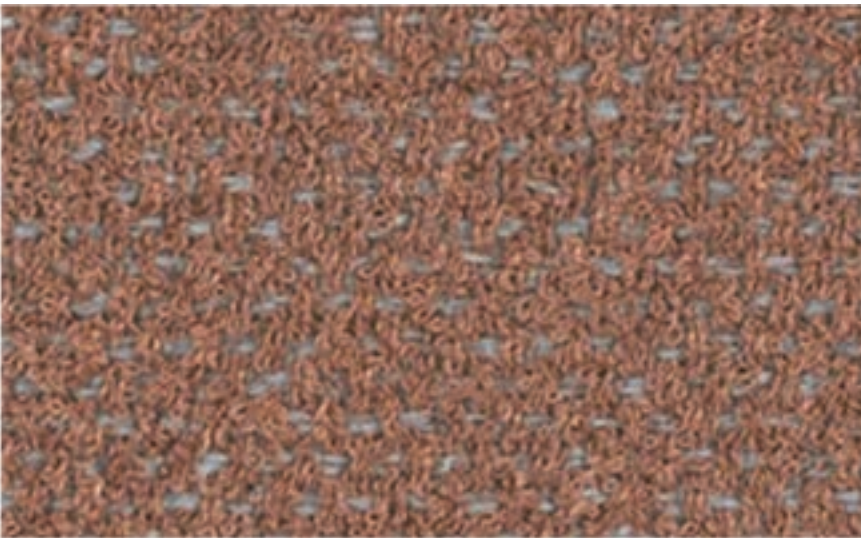
Palenque



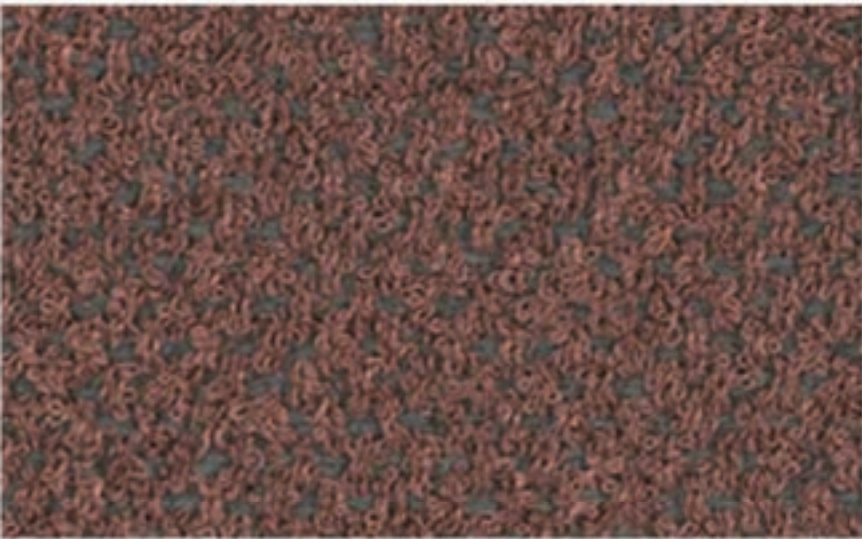
Gorkha



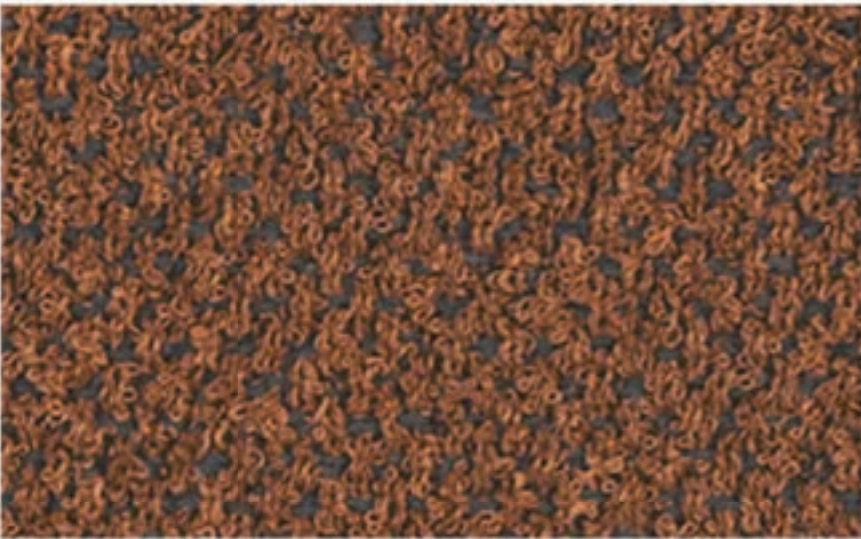
Petra



Meteora



Zion



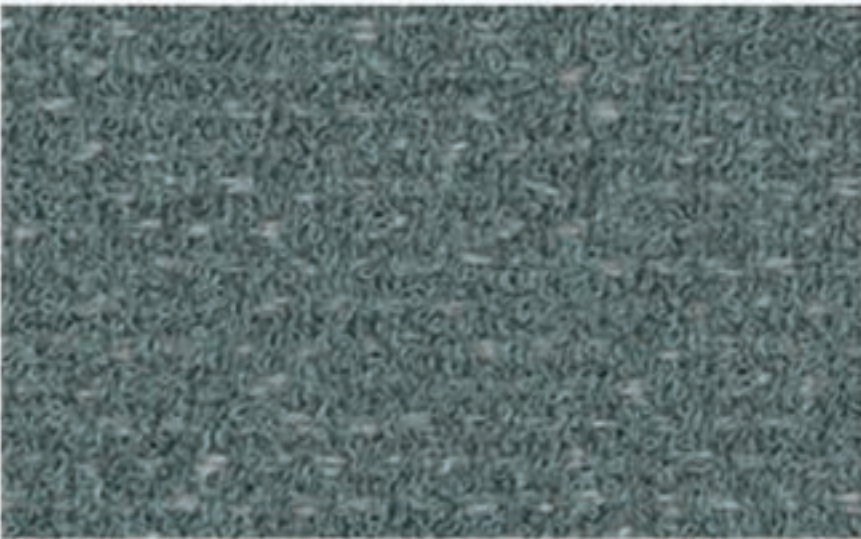
Marrakech



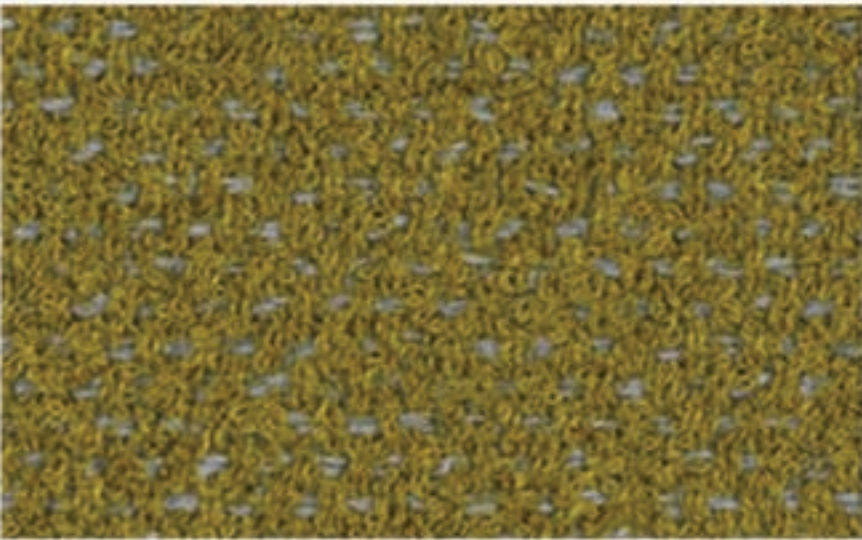
Dolomites



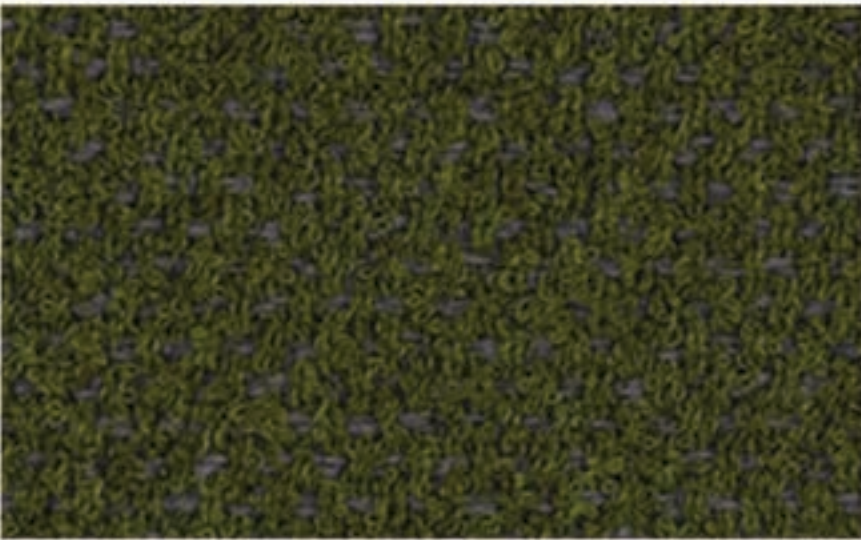
Halong



Molokai



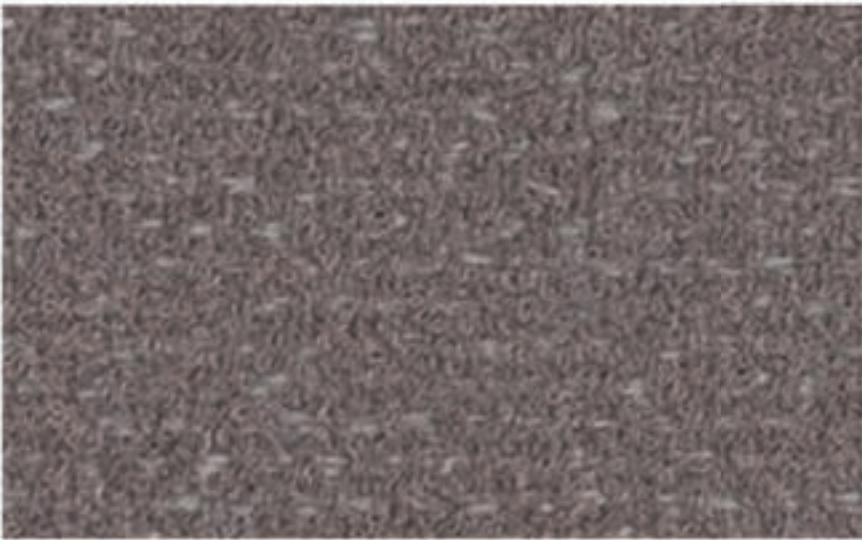
Yosemite



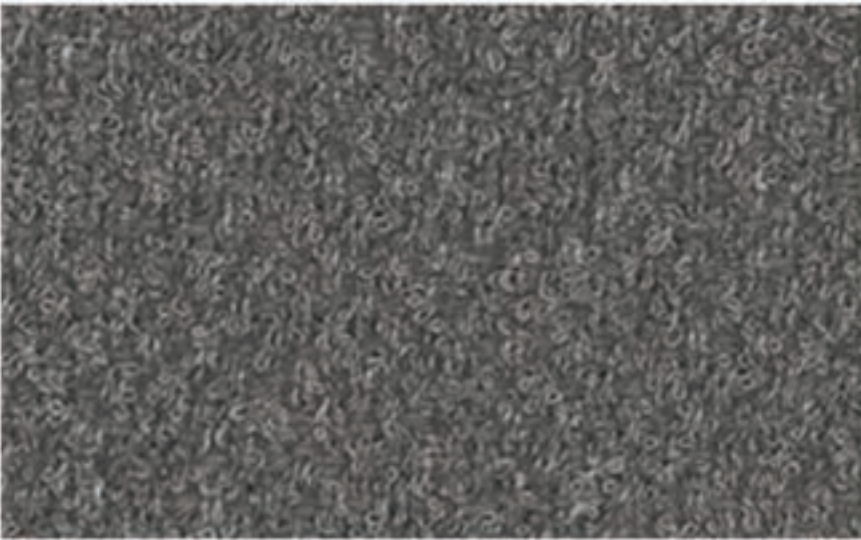
Patagonia



Rainer



Calabria



Malham

FOSTER

By Vescom

FABRIC TYPE	COMPOSITION	DURABILITY	LIGHTFASTNESS	PILLING	FIRE TESTS
Bouclé	97% Recycled Polyester FR 3% Polyester FR	60,000 Martindale	6	4	EN 1021/1-2, Pass; BS 5852, Crib 5; NF P 92/503-507 or NF D 60-013, M1 DIN 4102, B1 Cal TB 117-2013, section 1, Pass; IMO 2010 FTP part 8, Pass; NFPA 260, Class 1



Caution: the displayed colours, due to technical matters, are approximate and may differ from the original



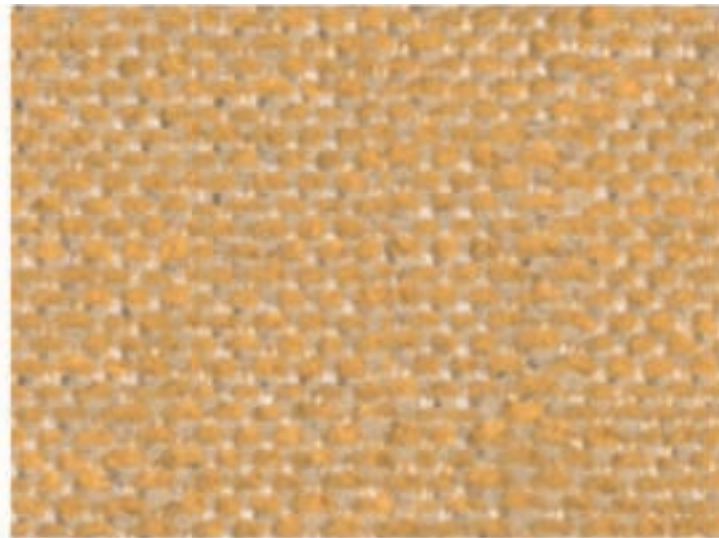
Vit



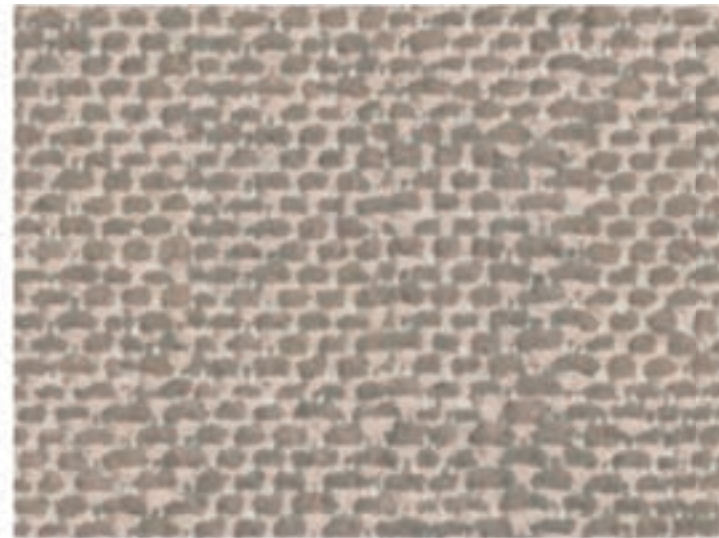
Clan



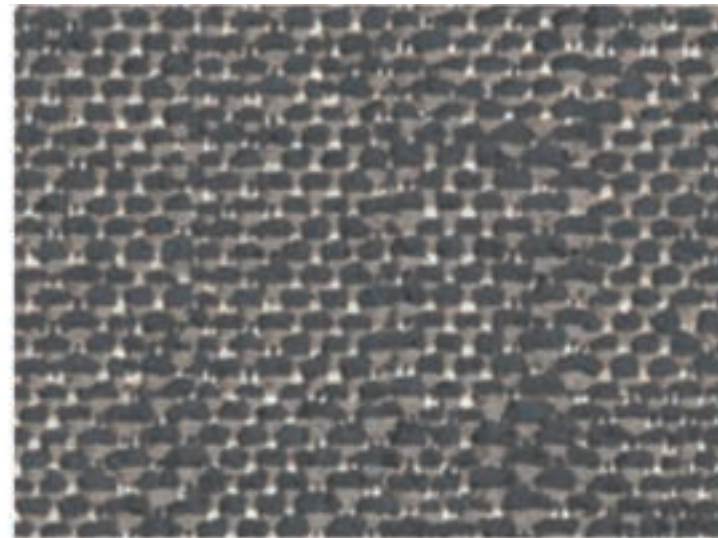
Shetland



Lora



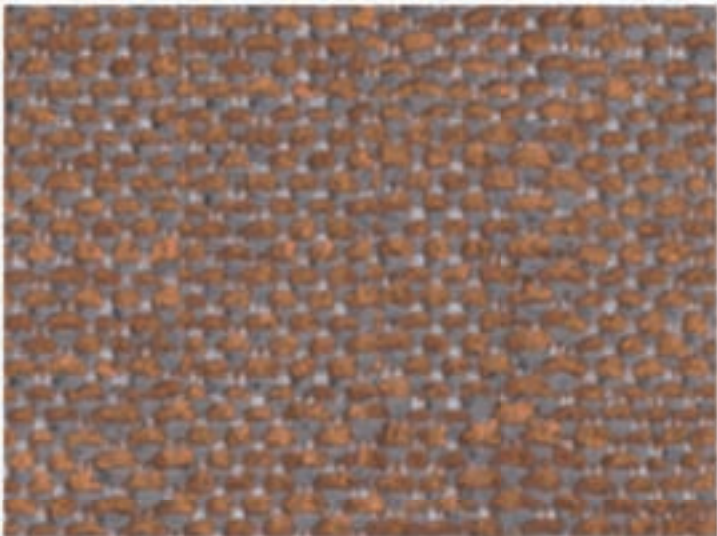
Hillswick



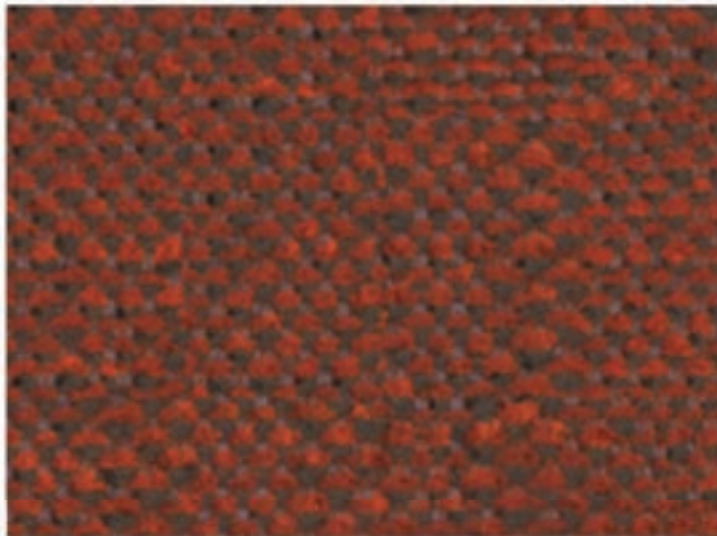
Dolphin



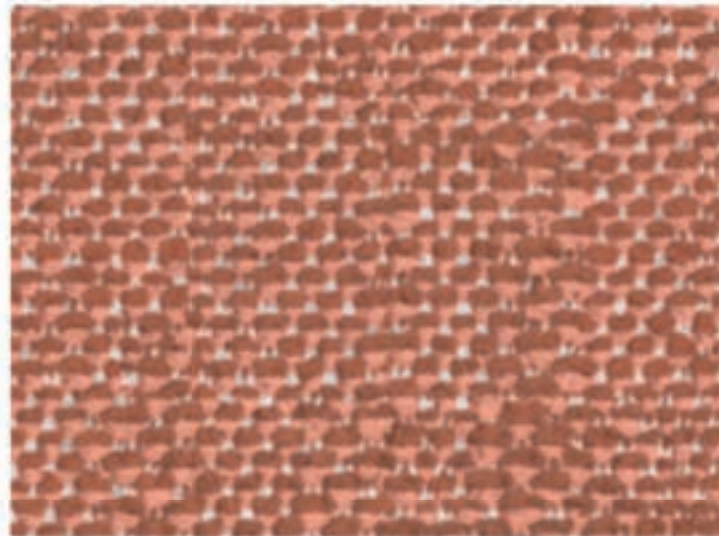
Lomond



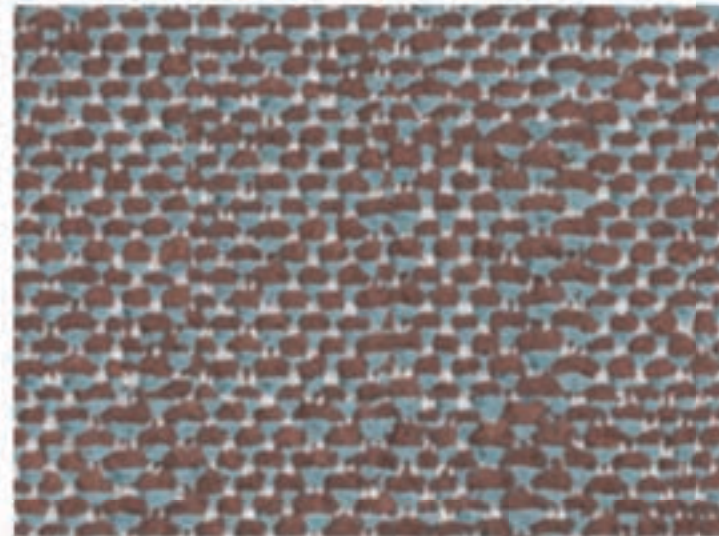
Austen



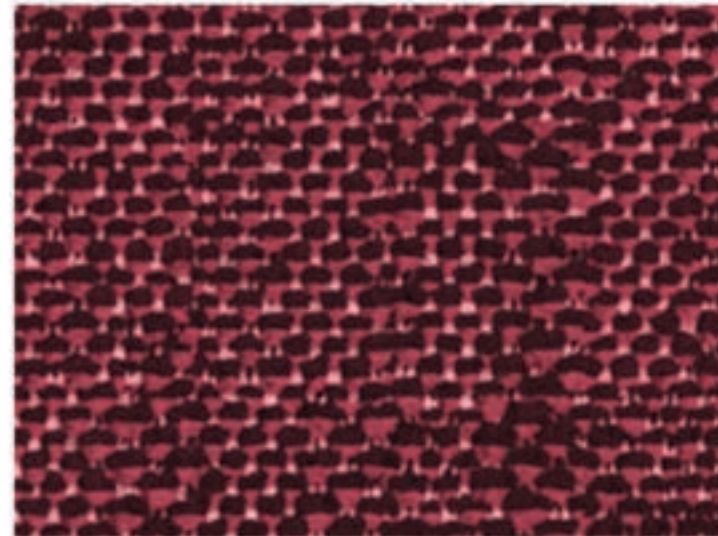
Pitlochry



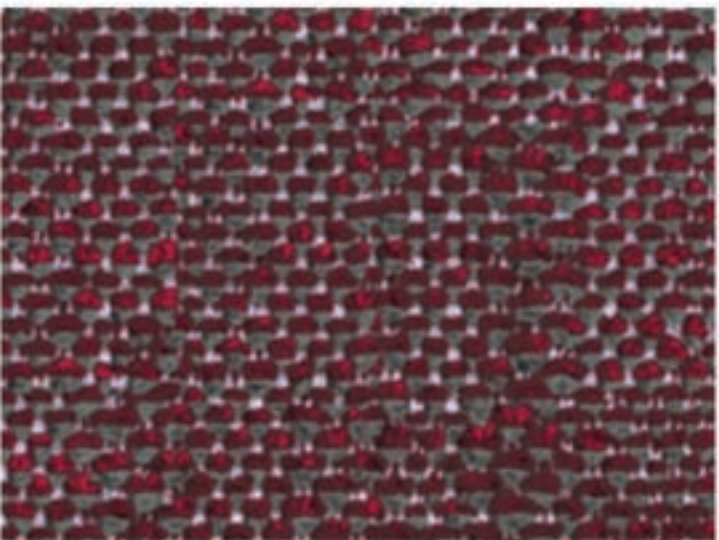
Maree



Denny



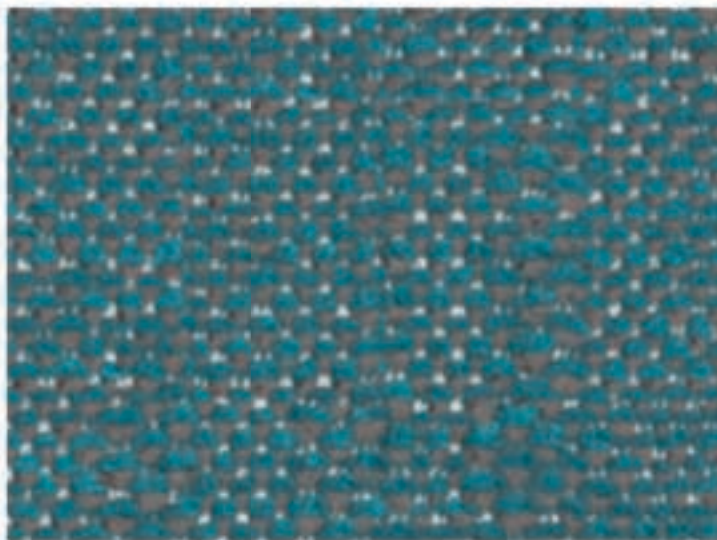
Tummel



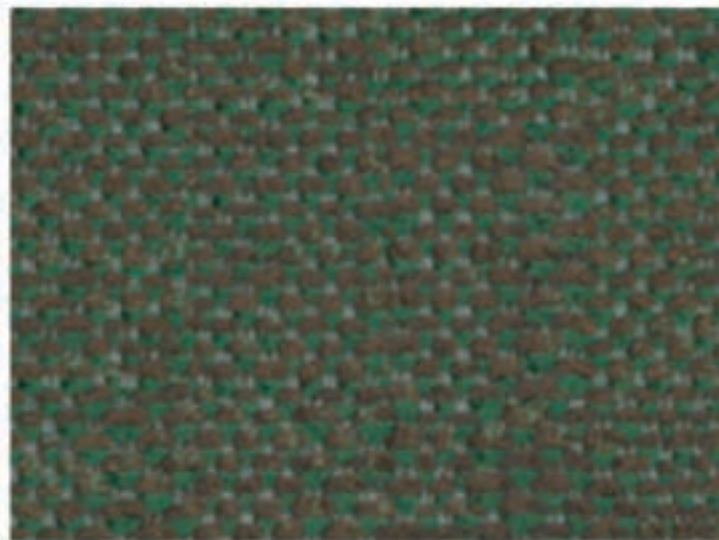
Lossie



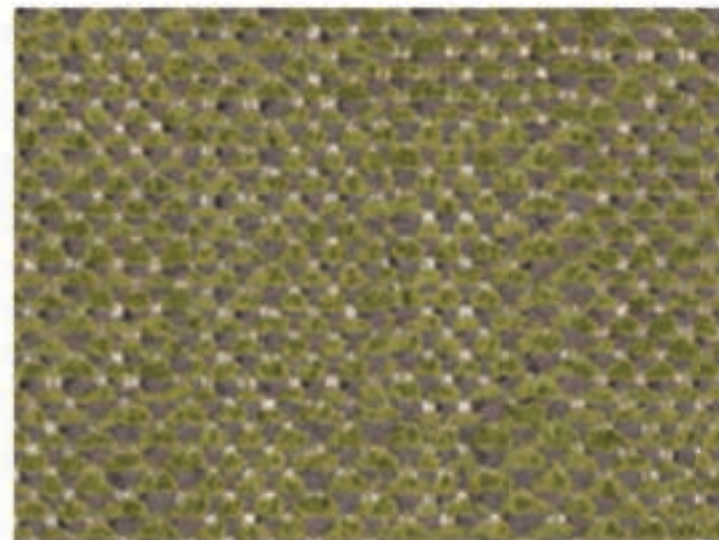
Adriatic



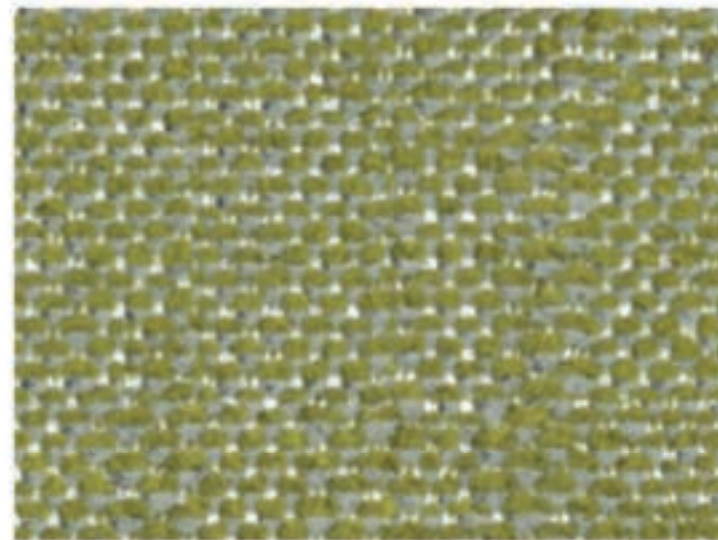
Inverness



Carron



Staffa



Fair Isle

FUGA

By Vescom



Caution: the displayed colours, due to technical matters, are approximate and may differ from the original

FABRIC TYPE	COMPOSITION	DURABILITY	LIGHTFASTNESS	PILLING	FIRE TESTS
Chenille	79% Recycled Polyester FR 21% Polyester FR	70,000 Martindale	6 - 7	4 - 5	EN 1021/1-2, Pass; BS 5852, Crib 5; NF P 92/503-507 or NF D 60-013, M1 DIN 4102, B1 Cal TB 117-2013, section 1, Pass; IMO 2010 FTP part 8, Pass; NFPA 260, Class 1



Milk



Cream



Warm Grey



Sand



Camel



Taupe



Mink



Ebony



Mostaza



Masai



Copper



Rust



Mauve



Marsala



Red



Bourdeaux



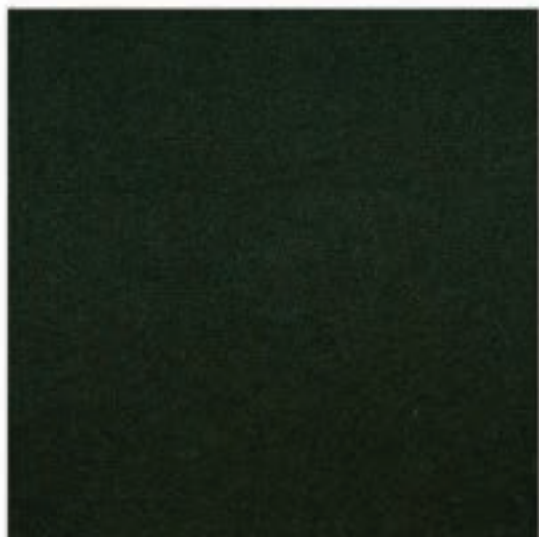
Cement



Olive



Forest



Emerald



Steel Blue



Mid Grey



Navy



Black

HARALD

FABRIC TYPE	COMPOSITION	DURABILITY	LIGHTFASTNESS	PILLING	FEATURES	FIRE TESTS
Velvet - Soft Sheen	100% Cotton	50,000 Martindale	3	5	Liquid Repellent	BS 5852 part 1 - Cigarette Test PASS EN 1021-1 - Cigarette Test PASS CA Tech. Bull. 117:2013 / NFPA 260 - Cigarette Test PASS

Caution: the displayed colours, due to technical matters, are approximate and may differ from the original



White



Cream



Light Grey



Lavanda



Orange



Bordeaux



Trufa



Beige



Sand



Citric



Green



Camel



Brown



Chocolate



Water Green



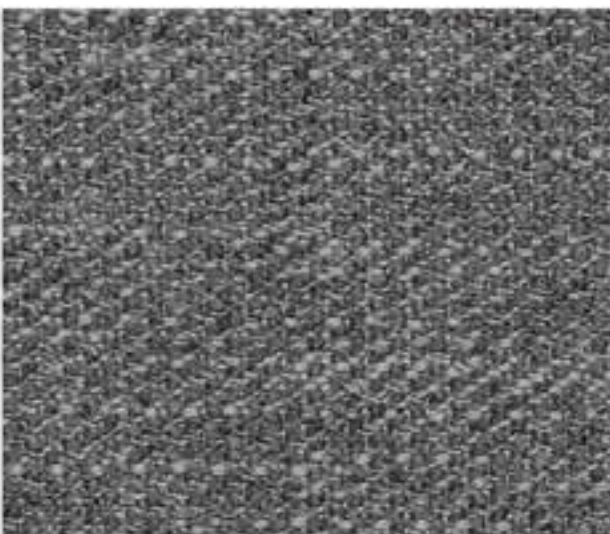
Turquoise



Blue



Ocean



Steel



Dark Grey



Black

LONDON

FABRIC TYPE	COMPOSITION	DURABILITY	LIGHTFASTNESS	PILLING	FIRE TESTS
Flat Weave	100% Polyester	80,000 Martindale	5	4	BS 5852 part 1 - Cigarette Test PASS EN 1021-1 - Cigarette Test PASS CA Tech. Bull. 117:2013 / NFPA 260 - Cigarette Test PASS



BLUEWORLD[®]
HUMAN CARE TECHNOLOGY



STANDARD
100
9342CIT
CITEVE

Caution: the displayed colours, due to technical matters, are approximate and may differ from the original



Pearl



Sand



Toffee



Truffle



Coral



Brick



Gold



Cuoio



Terra



Chocolate



Moss



Emerald



Forest



Ash



Black

MACAU

FABRIC TYPE	COMPOSITION	DURABILITY	LIGHTFASTNESS	PILLING	FEATURES	FIRE TESTS
Velvet - Soft Sheen	100% Polyester	90,000 Martindale	5	4 - 5	Anti-Stain Pet Friendly	BS 5852 part 1 - Cigarette Test PASS EN 1021-1 - Cigarette Test PASS CA Tech. Bull. 117:2013 / NFPA 260 - Cigarette Test PASS



BLUEWORLD[®]
HUMAN CARE TECHNOLOGY



STANDARD
100
9342CIT
CITEVE

Caution: the displayed colours, due to technical matters, are approximate and may differ from the original



MADEIRA

FABRIC TYPE	COMPOSITION	DURABILITY	LIGHTFASTNESS	PILLING	FIRE TESTS
Textured Flat Weave	100% Polyester	50,000 Martindale	4	5	BS 5852 part 1 - Cigarette Test PASS EN 1021-1 - Cigarette Test PASS CA Tech. Bull. 117:2013 / NFPA 260 - Cigarette Test PASS



BLUEWORLD[®]
HUMAN CARE TECHNOLOGY



STANDARD
100
9342CIT
CITEVE

Caution: the displayed colours, due to technical matters, are approximate and may differ from the original



Cream



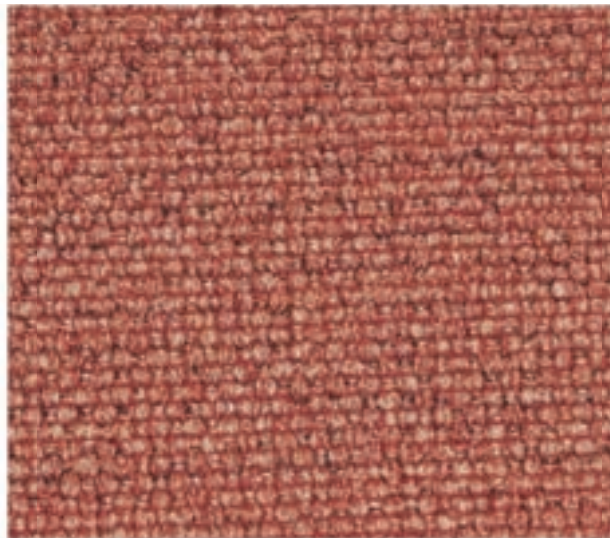
Toffee



Salmon



Pink



Teja



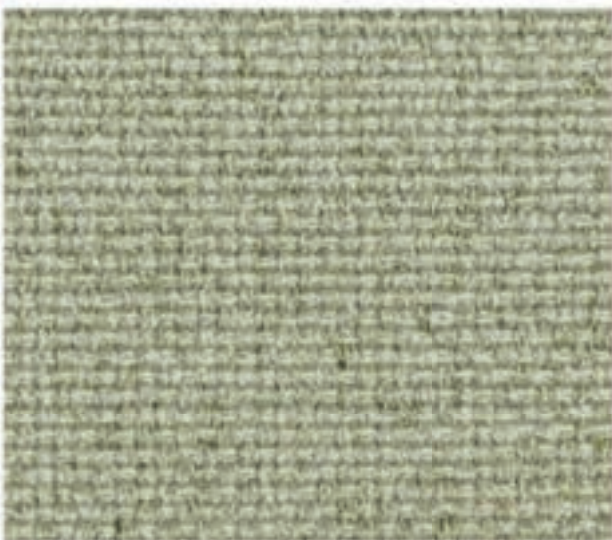
Red



Yellow



Camel



Lima



Green



Trufa



Moka



Chocolate



Elephant



Fog



Light Grey



Sky



Ocean



Ash



Anthracite



Black

SEATTLE

FABRIC TYPE	COMPOSITION	DURABILITY	LIGHTFASTNESS	PILLING	FEATURES	FIRE TESTS
Flat Weave	100% Polyester	90,000 Martindale	5	4	Easy to Clean	BS 5852 part 1 - Cigarette Test PASS EN 1021-1 - Cigarette Test PASS CA Tech. Bull. 117:2013 / NFPA 260 - Cigarette Test PASS



HUMAN CARE TECHNOLOGY



STANDARD 100 9342CIT CITEVE

Caution: the displayed colours, due to technical matters, are approximate and may differ from the original



Pearl



Ivory



Toffee



Pink



Marsala



Deep Purple



Mostaza



Mud



Truffle



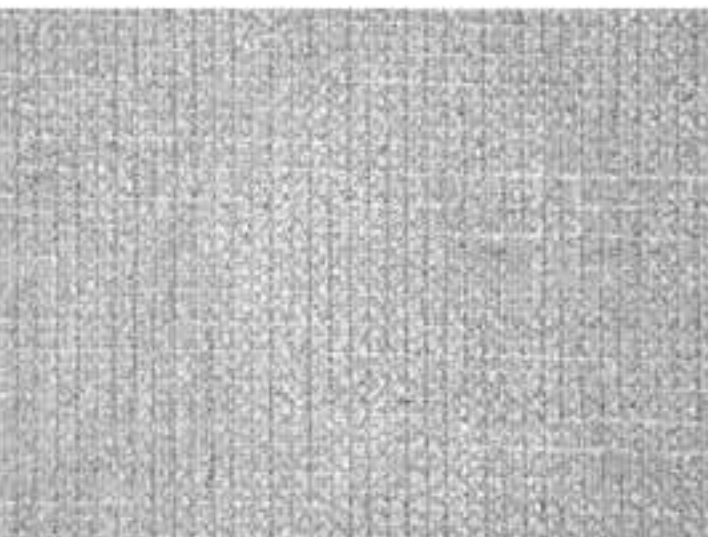
Green



Forest



Chocolate



Cement



Fog



Ocean



Taupe



Anthracite



Black

TRIBU

FABRIC TYPE	COMPOSITION	DURABILITY	LIGHTFASTNESS	PILLING	FEATURES	FIRE TESTS
Chenille	100% Polyester	35,000 Martindale	5	4	Anti-Stain	BS 5852 part 1 - Cigarette Test PASS EN 1021-1 - Cigarette Test PASS CA Tech. Bull. 117:2013 / NFPA 260 - Cigarette Test PASS



BLUEWORLD[®]
HUMAN CARE TECHNOLOGY



STANDARD
100
9342CIT
CITEVE

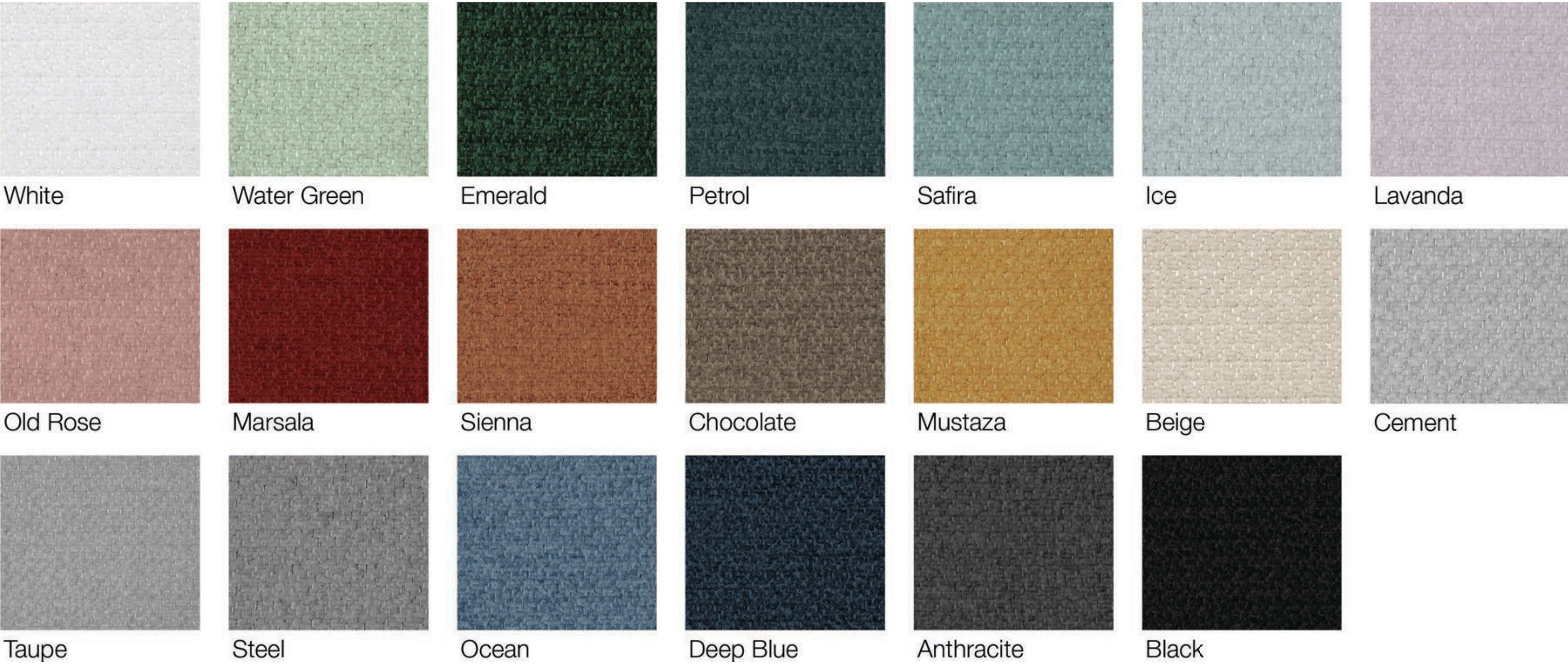
Caution: the displayed colours, due to technical matters, are approximate and may differ from the original



VELVETEEN

FABRIC TYPE	COMPOSITION	DURABILITY	LIGHTFASTNESS	PILLING
Velvet - Matte Sheen	100% Polyester	60,000 Martindale	4	4

Caution: the displayed colours, due to technical matters, are approximate and may differ from the original



VIENNA

FABRIC TYPE	COMPOSITION	DURABILITY	LIGHTFASTNESS	PILLING	FEATURES	FIRE TESTS
Chenille	100% Polyester	65,000 Martindale	5	4	Anti-Stain	BS 5852 part 1 - Cigarette Test PASS EN 1021-1 - Cigarette Test PASS CA Tech. Bull. 117:2013 / NFPA 260 - Cigarette Test PASS



Caution: the displayed colours, due to technical matters, are approximate and may differ from the original

Not all available fabrics and colours are listed on the site. Please contact us if you would like more information on available fabrics and colours.

Email: info@nue-modern.com

www.nue-modern.com