



UPHOLSTERY OPTIONS

CAPITOL ARMCHAIR



APOLLO

FABRIC TYPE	COMPOSITION	DURABILITY	LIGHTFASTNESS	PILLING	FEATURES	FIRE TESTS
Chenille	100% Polyester	100,000 Martindale	4 - 5	4 - 5	Anti-Stain Liquid Repellent	BS 5852 part 1 - Cigarette Test PASS EN 1021-1 - Cigarette Test PASS CA Tech. Bull. 117:2013 / NFPA 260 - Cigarette Test PASS



BLUEWORLD[®]
HUMAN CARE TECHNOLOGY



STANDARD
100
9342CIT
CITEVE

Caution: the displayed colours, due to technical matters, are approximate and may differ from the original



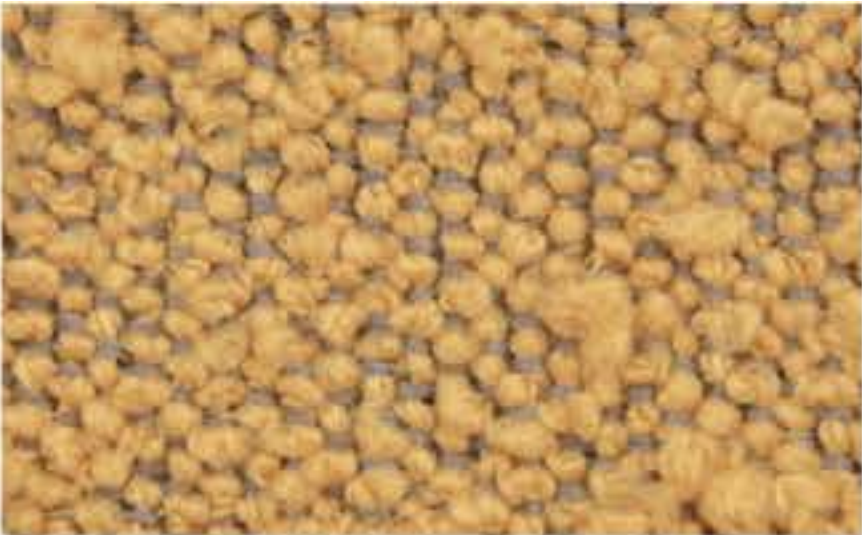
Nata



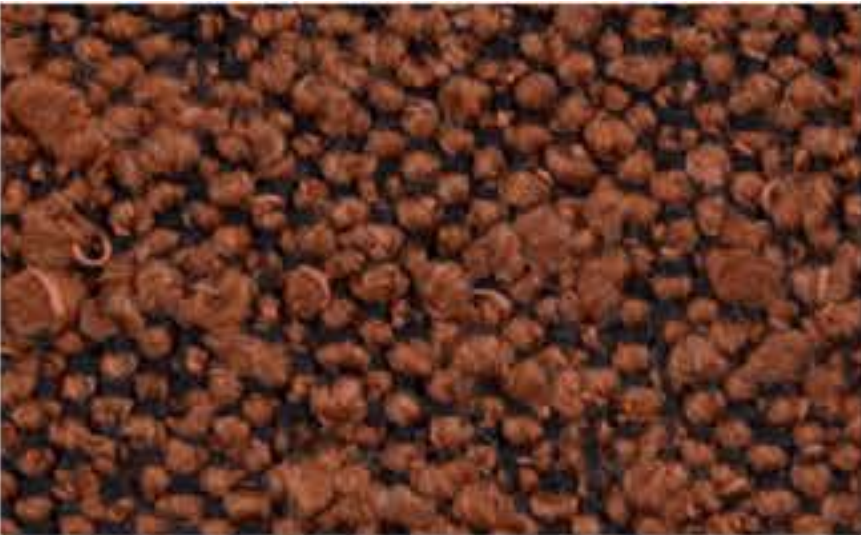
Pearl



Champagne



Mostaza



Brick



Pink



Toffee



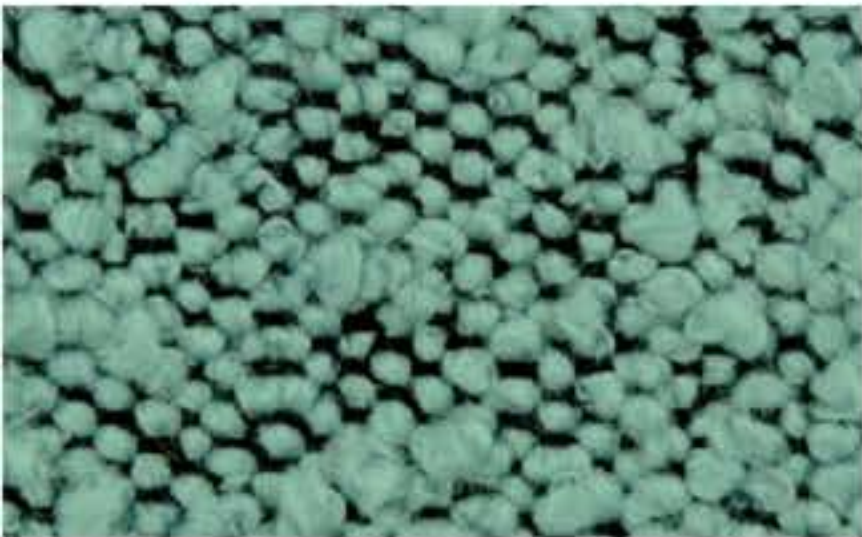
Taupe



Mouse



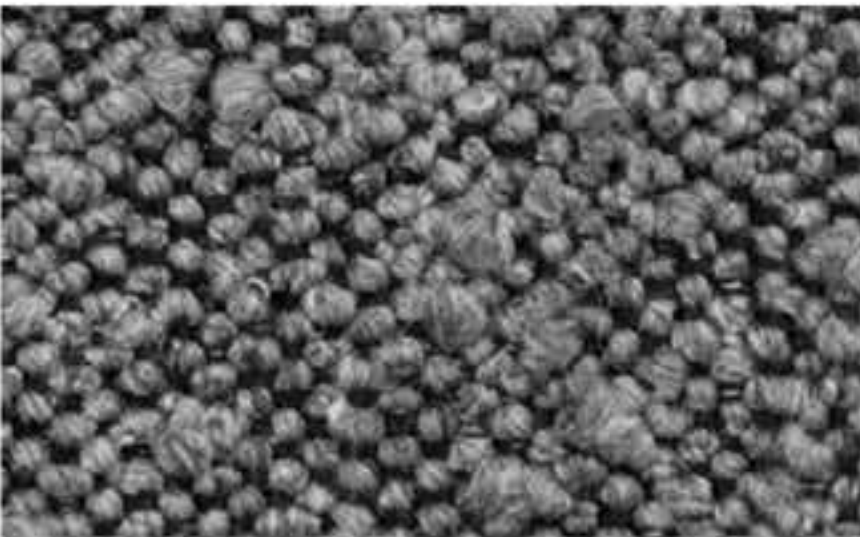
Olive Green



Safira



Atlantic



Graphite



Black

ASCOT

FABRIC TYPE	COMPOSITION	DURABILITY	LIGHTFASTNESS	PILLING	FIRE TESTS
Bouclé	100% Polyester	80,000 Martindale	5	4	BS 5852 part 1 - Cigarette Test PASS EN 1021-1 - Cigarette Test PASS CA Tech. Bull. 117:2013 / NFPA 260 - Cigarette Test PASS



Caution: the displayed colours, due to technical matters, are approximate and may differ from the original



BALTIC

FABRIC TYPE	COMPOSITION	DURABILITY	LIGHTFASTNESS	PILLING	FEATURES	FIRE TESTS
Chenille	100% Polyester	35,000 Martindale	5	4	Anti-Stain	BS 5852 part 1 - Cigarette Test PASS EN 1021-1 - Cigarette Test PASS CA Tech. Bull. 117:2013 / NFPA 260 - Cigarette Test PASS



BLUEWORLD®
HUMAN CARE TECHNOLOGY



STANDARD
100
9342CIT
CITEVE

Caution: the displayed colours, due to technical matters, are approximate and may differ from the original



White



Sand



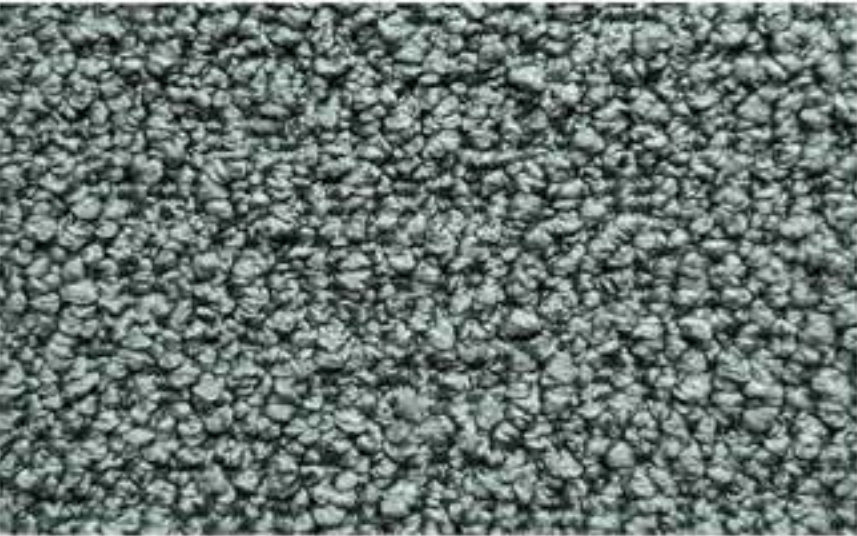
Pale Rose



Paprika



Cinnamon



Aqua



Pine



Hunter



Dark Forest



Fossil



Pebble



Dove



Stone



Shadow



Charcoal

BOUCLÉ

FABRIC TYPE	COMPOSITION	DURABILITY	LIGHTFASTNESS	PILLING
Bouclé	100% Polyester	80,000 Martindale	3	4

Caution: the displayed colours, due to technical matters, are approximate and may differ from the original



Fog



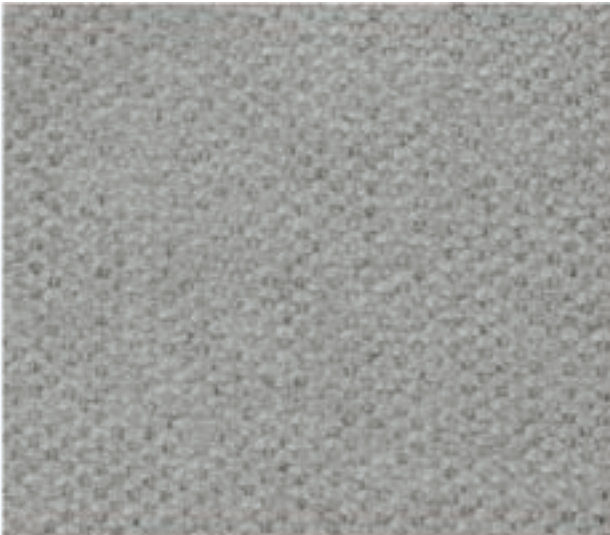
Peral



Beige



Mud



Cement



Tabac



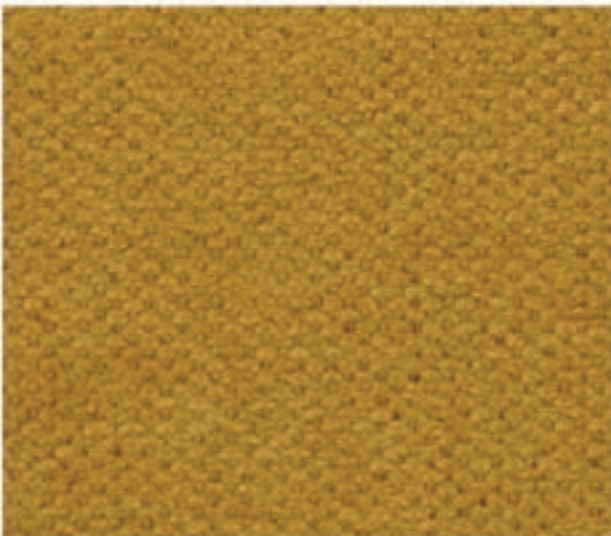
Chocolate



Camel



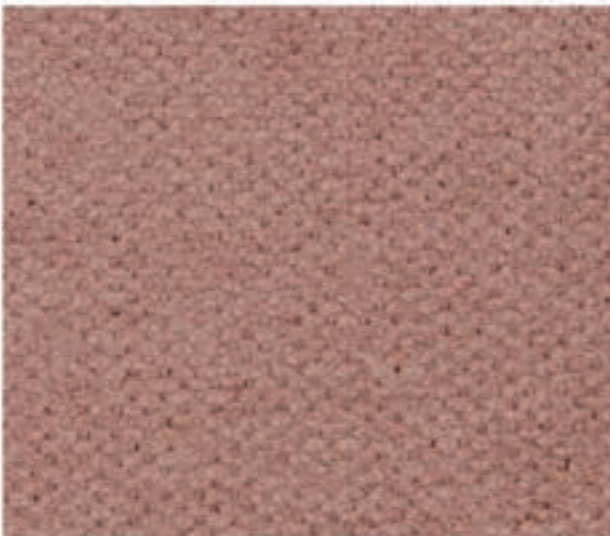
Truffle



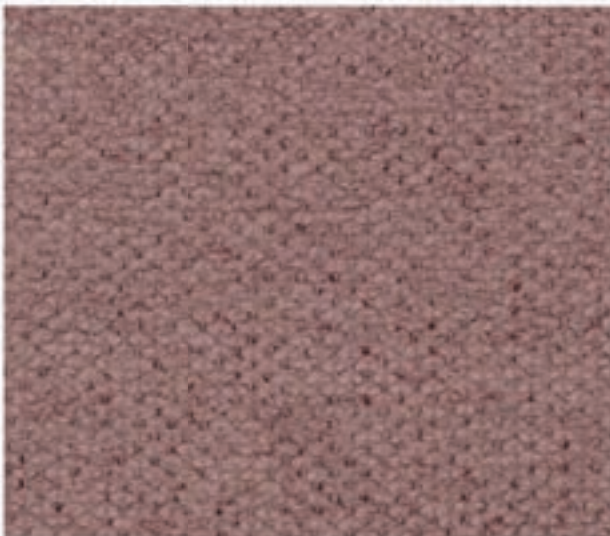
Mostaza



Brick



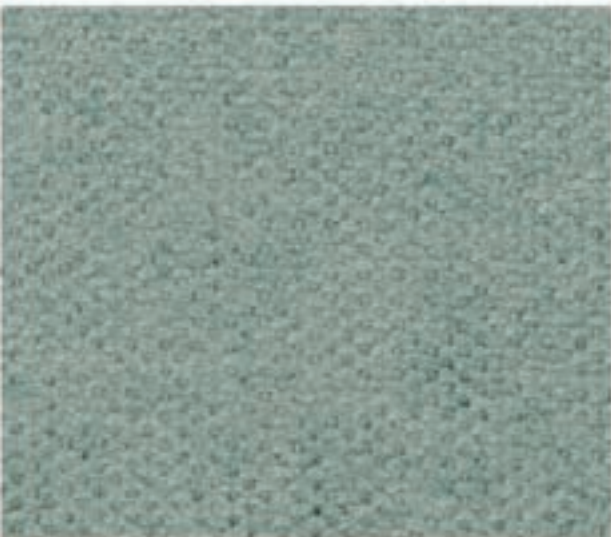
Coral



Rose



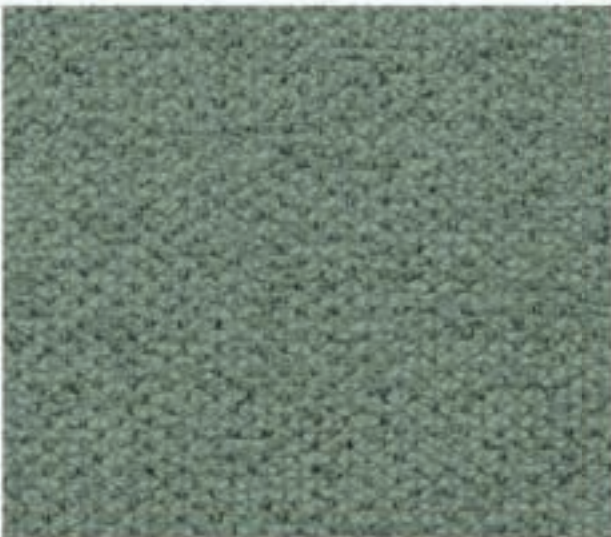
Bordeaux



Water Green



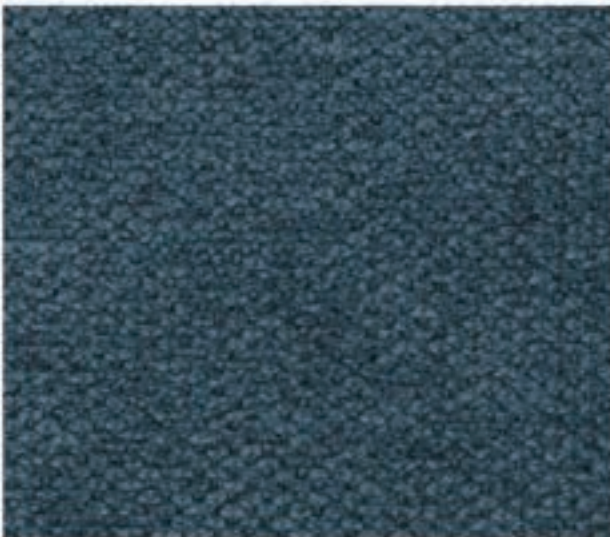
Ash



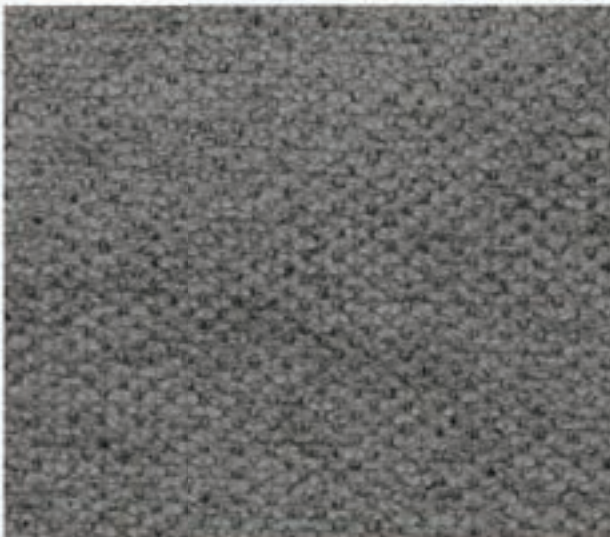
Bottle



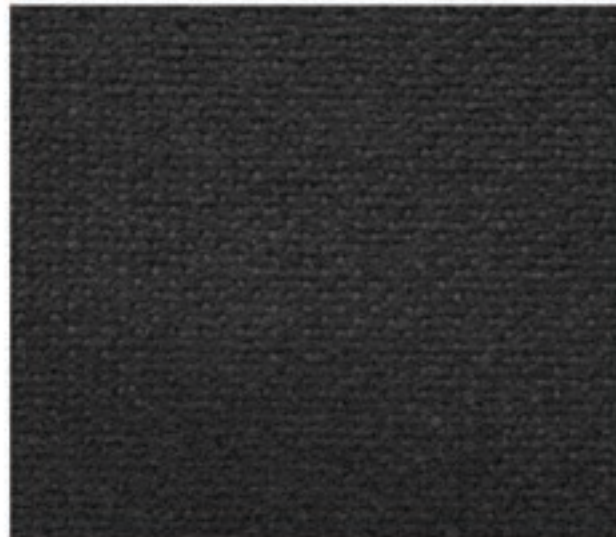
Jeans



Ocean



Anthracite



Black

BROOKLYN

FABRIC TYPE	COMPOSITION	DURABILITY	LIGHTFASTNESS	PILLING	FEATURES	FIRE TESTS
Chenille	94% Polyester + 6% Nylon	50,000 Martindale	3 -4	4 - 5	Anti-Stain	BS 5852 part 1 - Cigarette Test PASS EN 1021-1 - Cigarette Test PASS CA Tech. Bull. 117:2013 / NFPA 260 - Cigarette Test PASS



Caution: the displayed colours, due to technical matters, are approximate and may differ from the original



Pearl



Beige



Lion



Fog



Stone



Elephant



Taupe



Ebony



Sand



Light Violet



Pink



Salmon



Cuoio



Terracotta



Marsala



Bordeaux



Mostaza



Olive



Forest



Deep Green



Safira



Dark Blue



Ocean



Deep Blue

CASINO

FABRIC TYPE	COMPOSITION	DURABILITY	LIGHTFASTNESS	PILLING	FEATURES	FIRE TESTS
Velvet - Matte Finish	100% Polyester	100,000 Martindale	4 - 5	4 - 5	Anti-Stain Pet Friendly	BS 5852 part 1 - Cigarette Test PASS EN 1021-1 - Cigarette Test PASS CA Tech. Bull. 117:2013 / NFPA 260 - Cigarette Test PASS



BLUEWORLD[®]
HUMAN CARE TECHNOLOGY



STANDARD
100
9342CIT
CITEVE

Caution: the displayed colours, due to technical matters, are approximate and may differ from the original



HARALD

FABRIC TYPE	COMPOSITION	DURABILITY	LIGHTFASTNESS	PILLING	FEATURES	FIRE TESTS
Velvet - Soft Sheen	100% Cotton	50,000 Martindale	3	5	Liquid Repellent	BS 5852 part 1 - Cigarette Test PASS EN 1021-1 - Cigarette Test PASS CA Tech. Bull. 117:2013 / NFPA 260 - Cigarette Test PASS

Caution: the displayed colours, due to technical matters, are approximate and may differ from the original



White



Cream



Light Grey



Lavanda



Orange



Bordeaux



Trufa



Beige



Sand



Citric



Green



Camel



Brown



Chocolate



Water Green



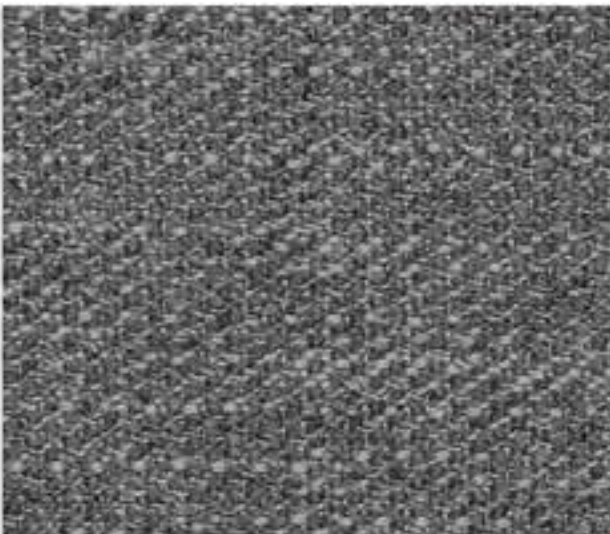
Turquoise



Blue



Ocean



Steel



Dark Grey



Black

LONDON

FABRIC TYPE	COMPOSITION	DURABILITY	LIGHTFASTNESS	PILLING	FIRE TESTS
Flat Weave	100% Polyester	80,000 Martindale	5	4	BS 5852 part 1 - Cigarette Test PASS EN 1021-1 - Cigarette Test PASS CA Tech. Bull. 117:2013 / NFPA 260 - Cigarette Test PASS



BLUEWORLD[®]
HUMAN CARE TECHNOLOGY



STANDARD
100
9342CIT
CITEVE

Caution: the displayed colours, due to technical matters, are approximate and may differ from the original



Pearl



Sand



Toffee



Truffle



Coral



Brick



Gold



Cuoio



Terra



Chocolate



Moss



Emerald



Forest



Ash



Black

MACAU

FABRIC TYPE	COMPOSITION	DURABILITY	LIGHTFASTNESS	PILLING	FEATURES	FIRE TESTS
Velvet - Soft Sheen	100% Polyester	90,000 Martindale	5	4 - 5	Anti-Stain Pet Friendly	BS 5852 part 1 - Cigarette Test PASS EN 1021-1 - Cigarette Test PASS CA Tech. Bull. 117:2013 / NFPA 260 - Cigarette Test PASS



BLUEWORLD[®]
HUMAN CARE TECHNOLOGY



STANDARD
100
9342CIT
CITEVE

Caution: the displayed colours, due to technical matters, are approximate and may differ from the original



White



Beige



Taupe



Lilac



Cement



Sand



Ash



Dark Brown



Nude



Yellow



Cognac



Terra



Trufa



Red



Elephant



Mouse



Water Green



Pistachio



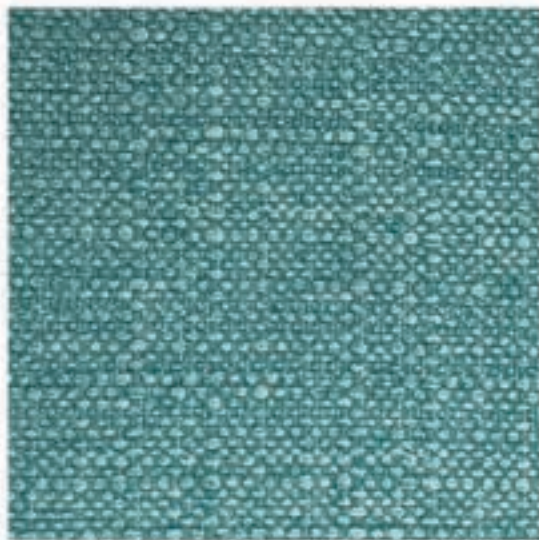
Bamboo



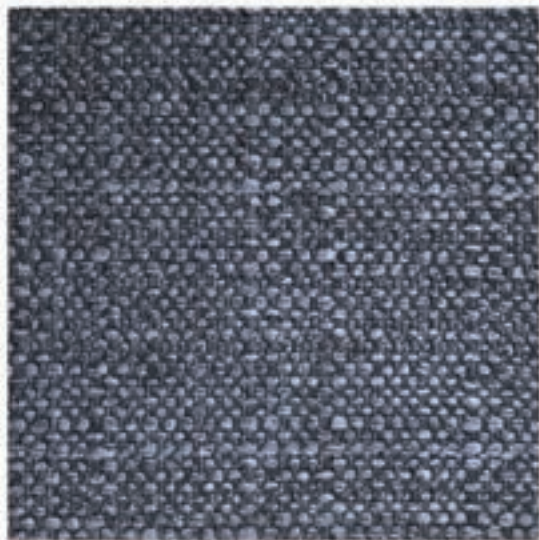
Forest



Sky



Turquoise



Ocean



Black

MADEIRA

FABRIC TYPE	COMPOSITION	DURABILITY	LIGHTFASTNESS	PILLING	FIRE TESTS
Textured Flat Weave	100% Polyester	50,000 Martindale	4	5	BS 5852 part 1 - Cigarette Test PASS EN 1021-1 - Cigarette Test PASS CA Tech. Bull. 117:2013 / NFPA 260 - Cigarette Test PASS



BLUEWORLD[®]
HUMAN CARE TECHNOLOGY



STANDARD
100
9342CIT
CITEVE

Caution: the displayed colours, due to technical matters, are approximate and may differ from the original



Pearl



Ivory



Toffee



Pink



Marsala



Deep Purple



Mostaza



Mud



Truffle



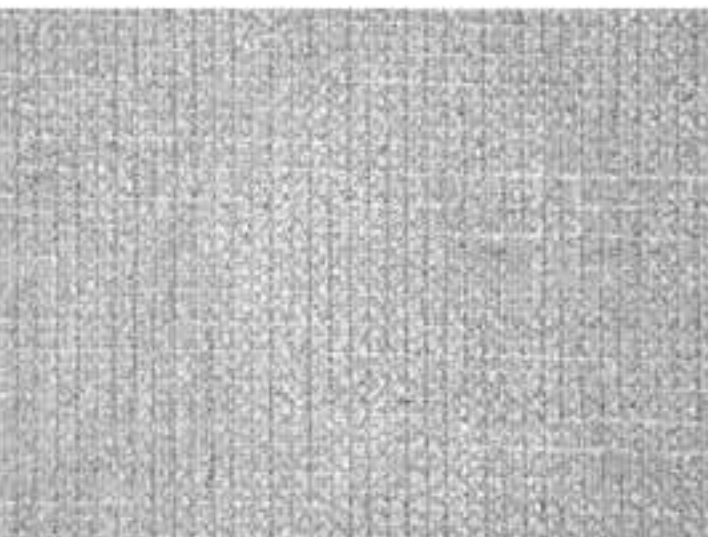
Green



Forest



Chocolate



Cement



Fog



Ocean



Taupe



Anthracite



Black

TRIBU

FABRIC TYPE	COMPOSITION	DURABILITY	LIGHTFASTNESS	PILLING	FEATURES	FIRE TESTS
Chenille	100% Polyester	35,000 Martindale	5	4	Anti-Stain	BS 5852 part 1 - Cigarette Test PASS EN 1021-1 - Cigarette Test PASS CA Tech. Bull. 117:2013 / NFPA 260 - Cigarette Test PASS

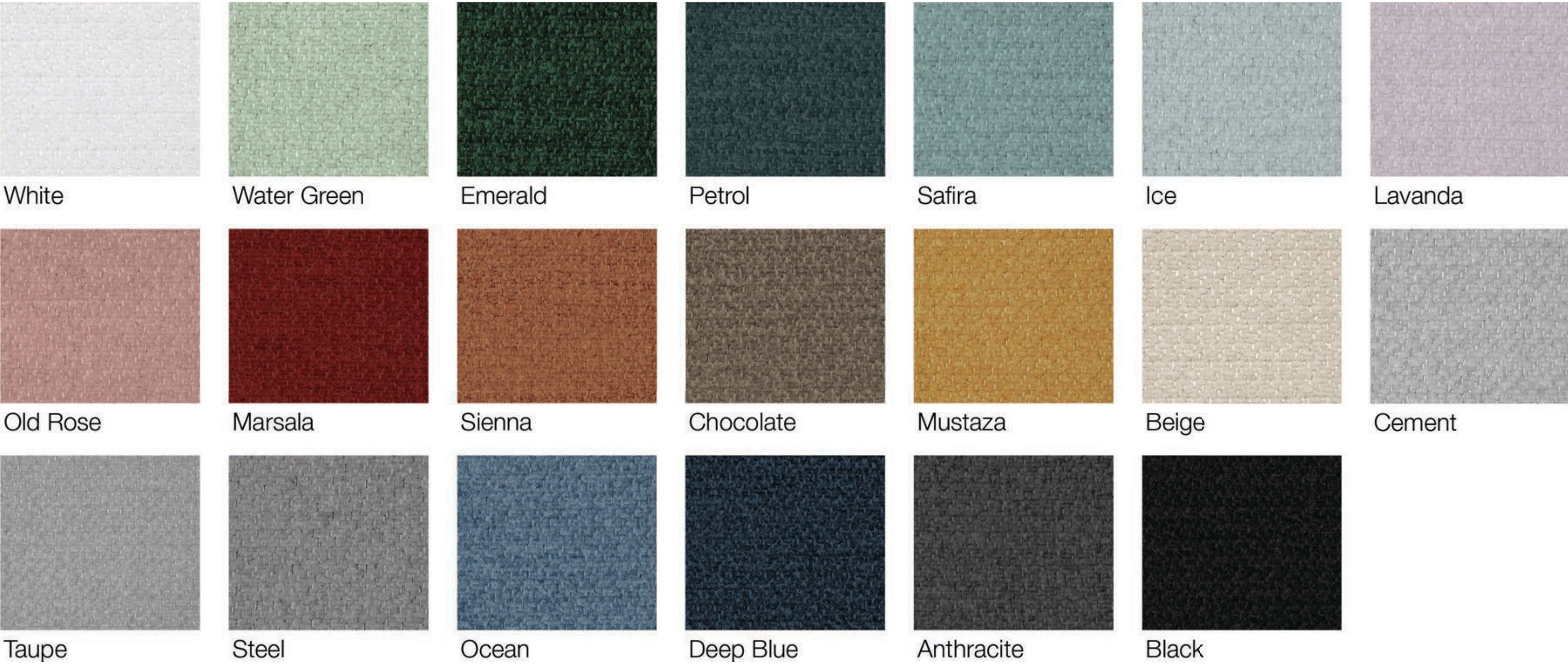


BLUEWORLD[®]
HUMAN CARE TECHNOLOGY



STANDARD
100
9342CIT
CITEVE

Caution: the displayed colours, due to technical matters, are approximate and may differ from the original



VIENNA

FABRIC TYPE	COMPOSITION	DURABILITY	LIGHTFASTNESS	PILLING	FEATURES	FIRE TESTS
Chenille	100% Polyester	65,000 Martindale	5	4	Anti-Stain	BS 5852 part 1 - Cigarette Test PASS EN 1021-1 - Cigarette Test PASS CA Tech. Bull. 117:2013 / NFPA 260 - Cigarette Test PASS



Caution: the displayed colours, due to technical matters, are approximate and may differ from the original



White



Lamb



Iceberg



Mouton



Khaki



Earth



Cement



Forest



Woody



Bourgandy



Ash



Zine



Fog



Flag



Black

ATLANTIDA

LEATHER TYPE	AVERAGE SKIN THICKNESS	RAWHIDE	PREPARATION	FIRE TESTS
Aniline Leather	1.2 - 1.4 mm	European Bovine	Lightly Buffed Natural Grain	BS 5852:1979 BS EN 1021-1-2:2006

Caution: the displayed colours, due to technical matters, are approximate and may differ from the original



Sand



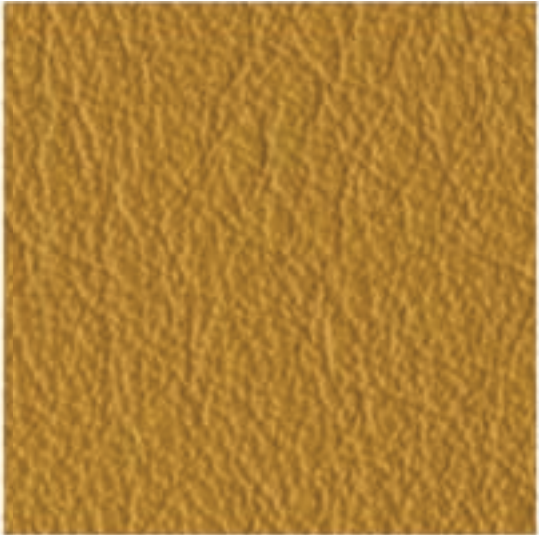
Lion



Camel



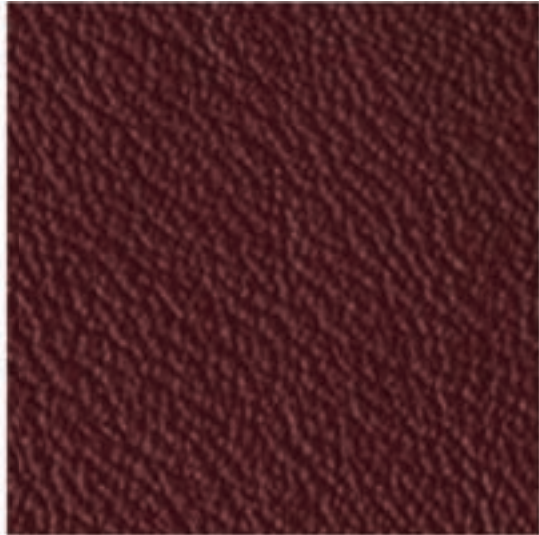
Cognac



Yam



Masai



Wine



Caribou



Cement



Toffee



Seapearl



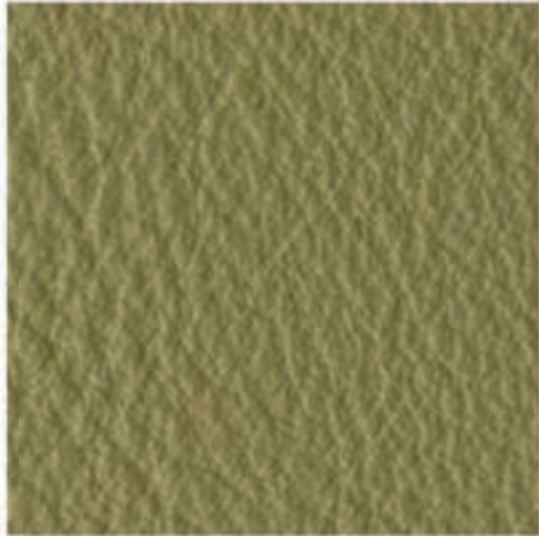
Peral



Stone



Umber



Moss



Bosco



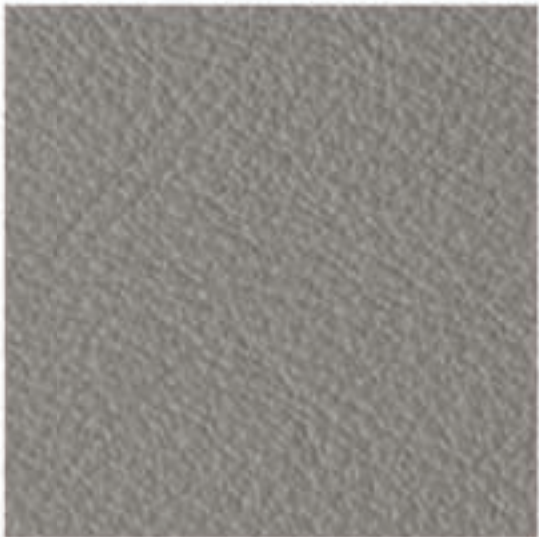
Ivory



White



Ice



Zinc



Shadow



Graphite



Gull



Black

LAGUNA

LEATHER TYPE	AVERAGE SKIN THICKNESS	RAWHIDE	PREPARATION	FIRE TESTS
Aniline Leather	0.9 - 1.1 mm	European Bovine	Lightly Buffed Natural Grain Transparent Protective Coat, Soft Waxy Feel, Semi-Matte Finish	CAL TB-117 (2013, Sec.1) BS 5852:1979 BS EN 1021-1-2:2006

Caution: the displayed colours, due to technical matters, are approximate and may differ from the original



Khaki



Soul



Orange



Bordeaux



Brandy



Woody



Truffle



Ebony



Lima



Musk



Sky



Blue

COUNTRY	LEATHER TYPE	AVERAGE SKIN THICKNESS	RAWHIDE	PREPARATION	FIRE TESTS
	Waxed Aniline Leather	0.8 - 1.0 mm	European Bovine	Lightly Buffed Natural Grain with Vintage Look Distressed and Semi-Glossy Appearance	BS 5852:1979 BS EN 1021-1-2:2006

Caution: the displayed colours, due to technical matters, are approximate and may differ from the original



info@modern-approach.com