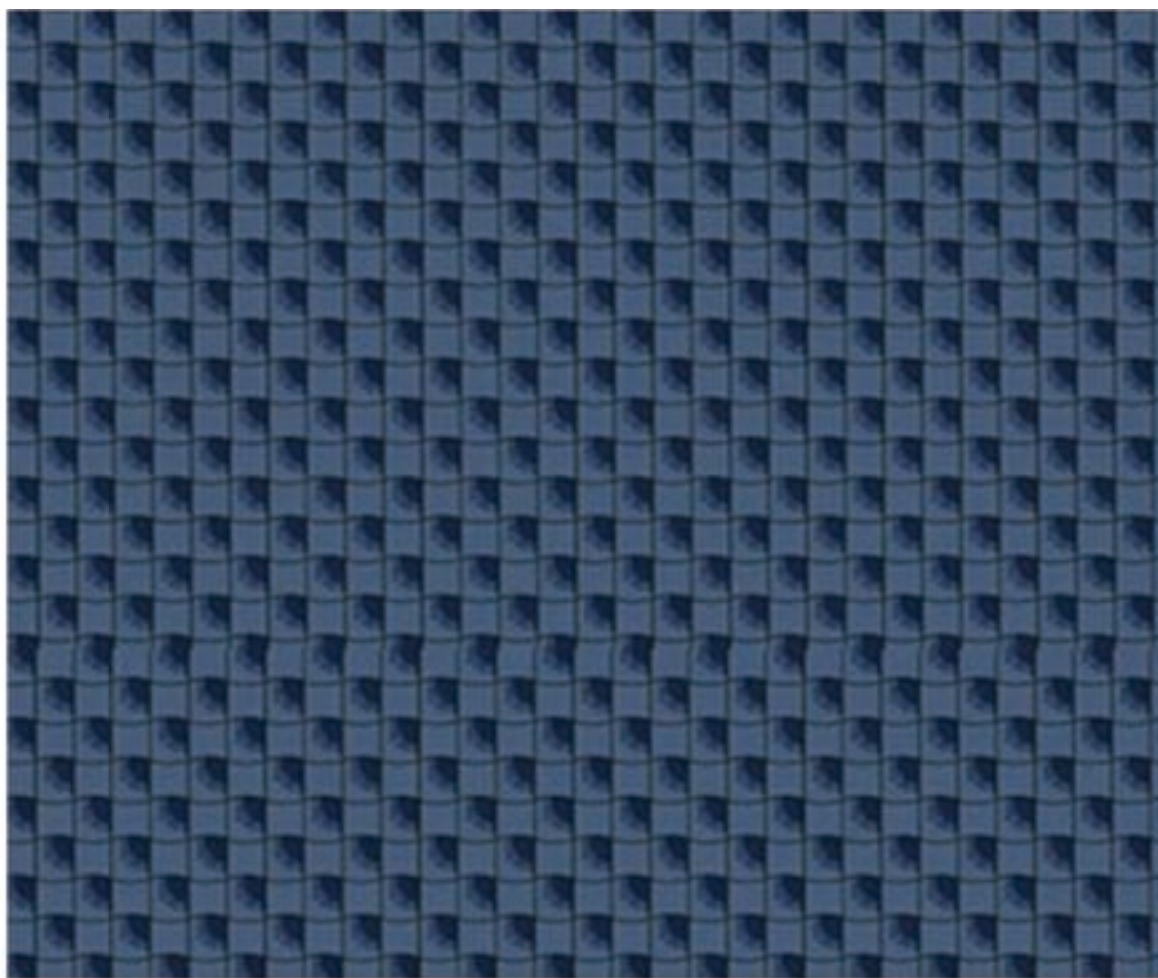


UPHOLSTERY OPTIONS

MAH JONG COLLECTION



BO-93



BO-94



BO-75



BO-19



BO-113



BO-98



LI-40



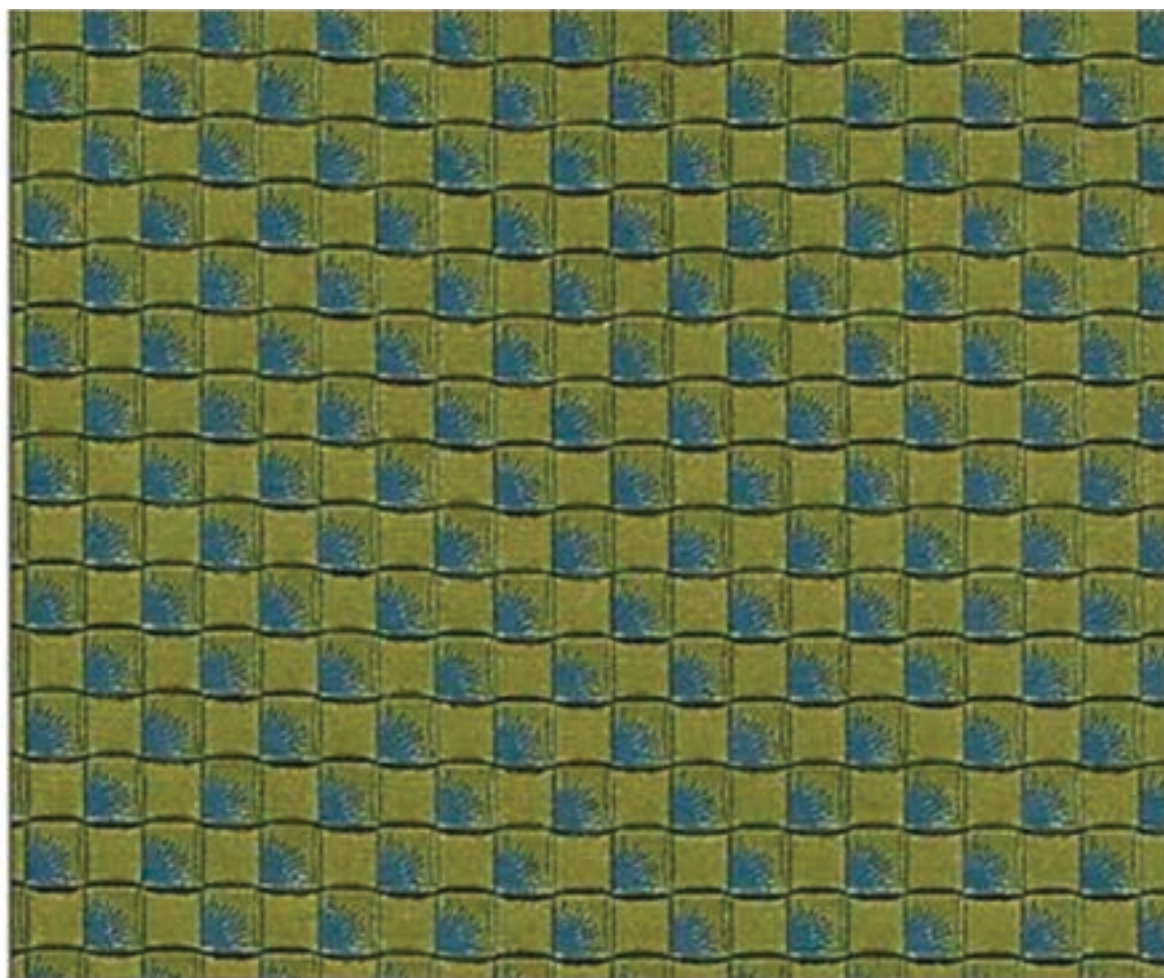
BO-102

IRUNE

Caution: the displayed colours, due to technical matters, are approximate and may differ from the original



BO-93



BO-95



BO-75



BO-18



BO-113



BO-99



LI-40



BO-102

UMI

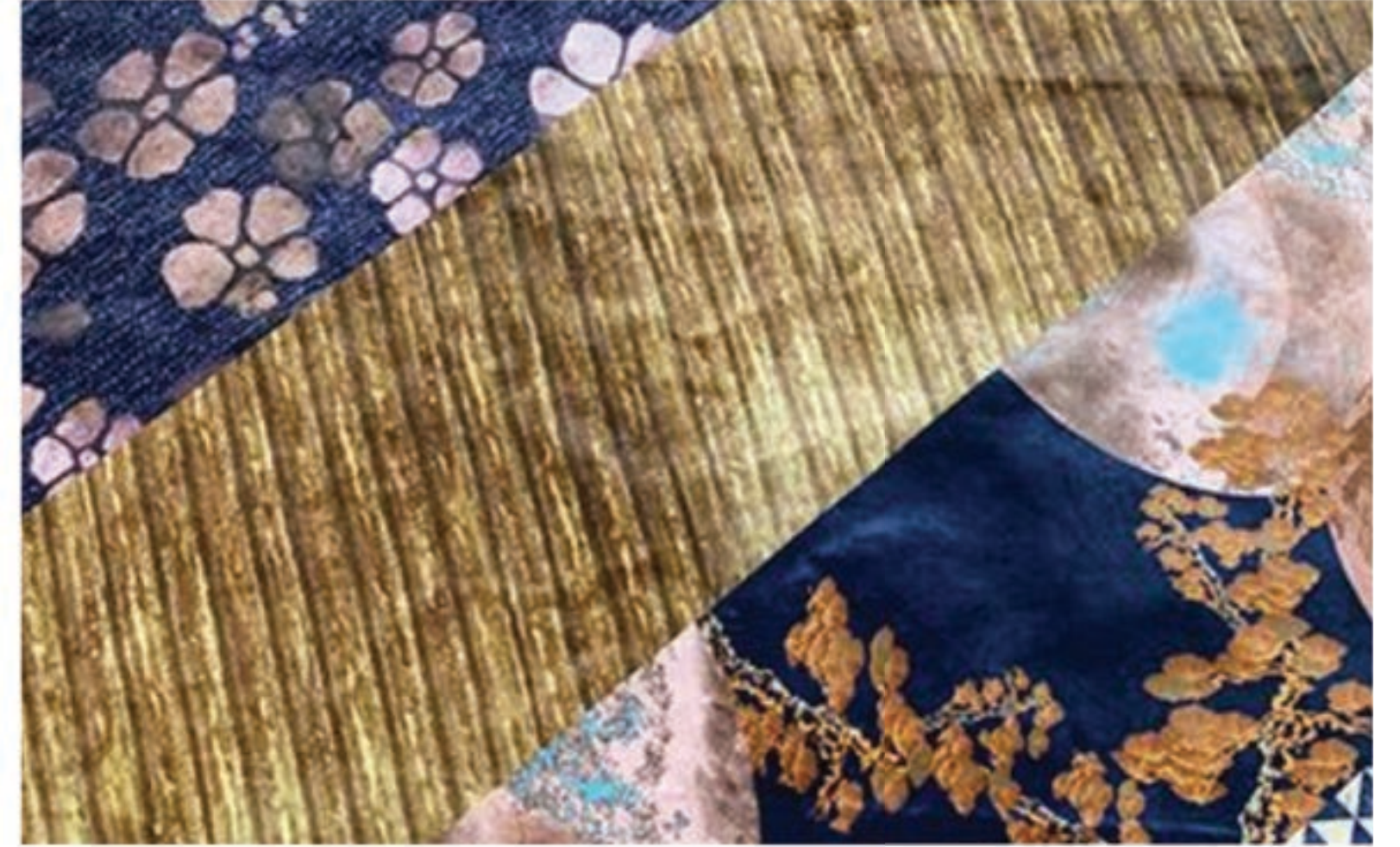
Caution: the displayed colours, due to technical matters, are approximate and may differ from the original



BO-30



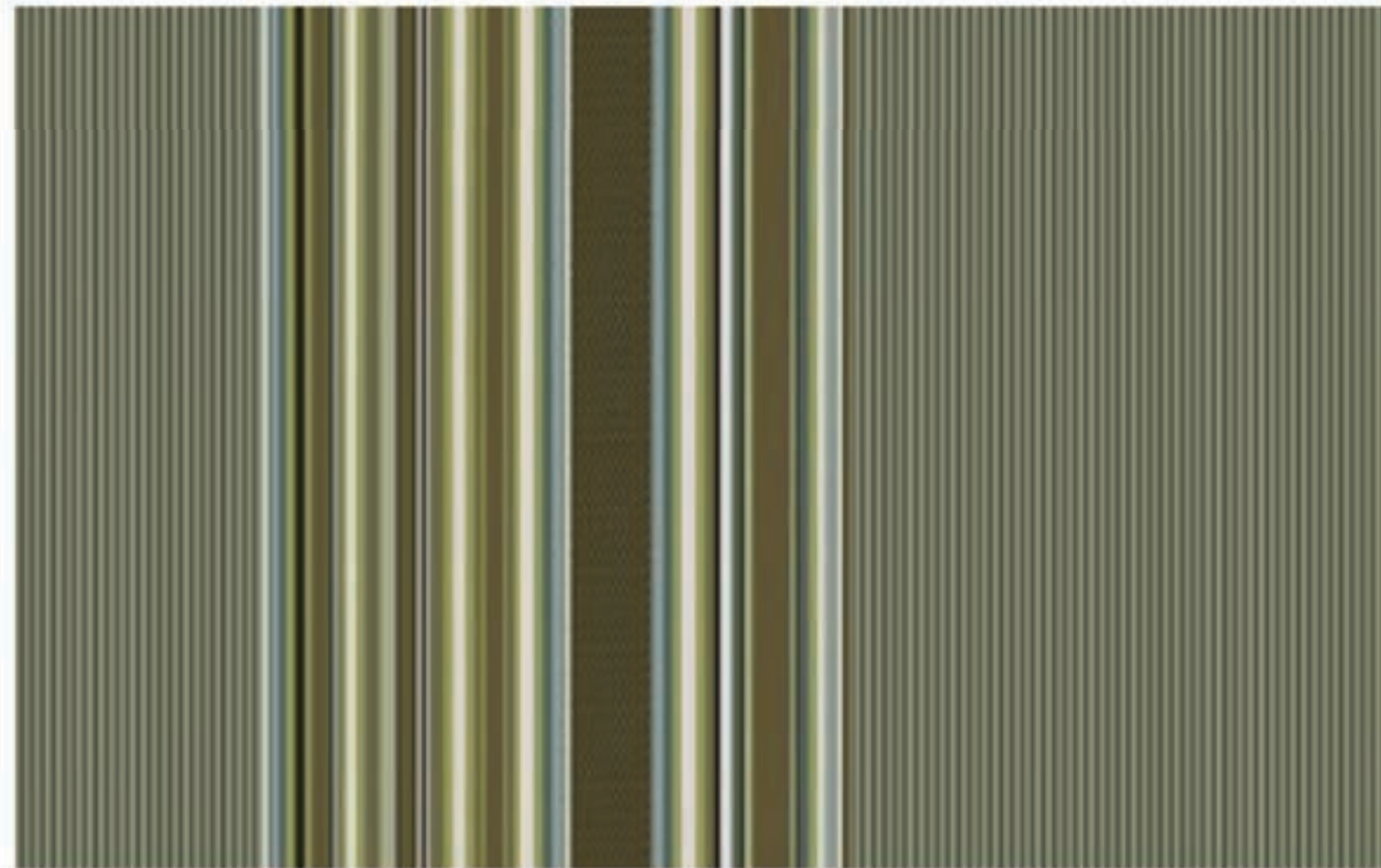
D32



BO-38



BO-42



BO-33



D05

YORU

Caution: the displayed colours, due to technical matters, are approximate and may differ from the original



BO-37



SI-44



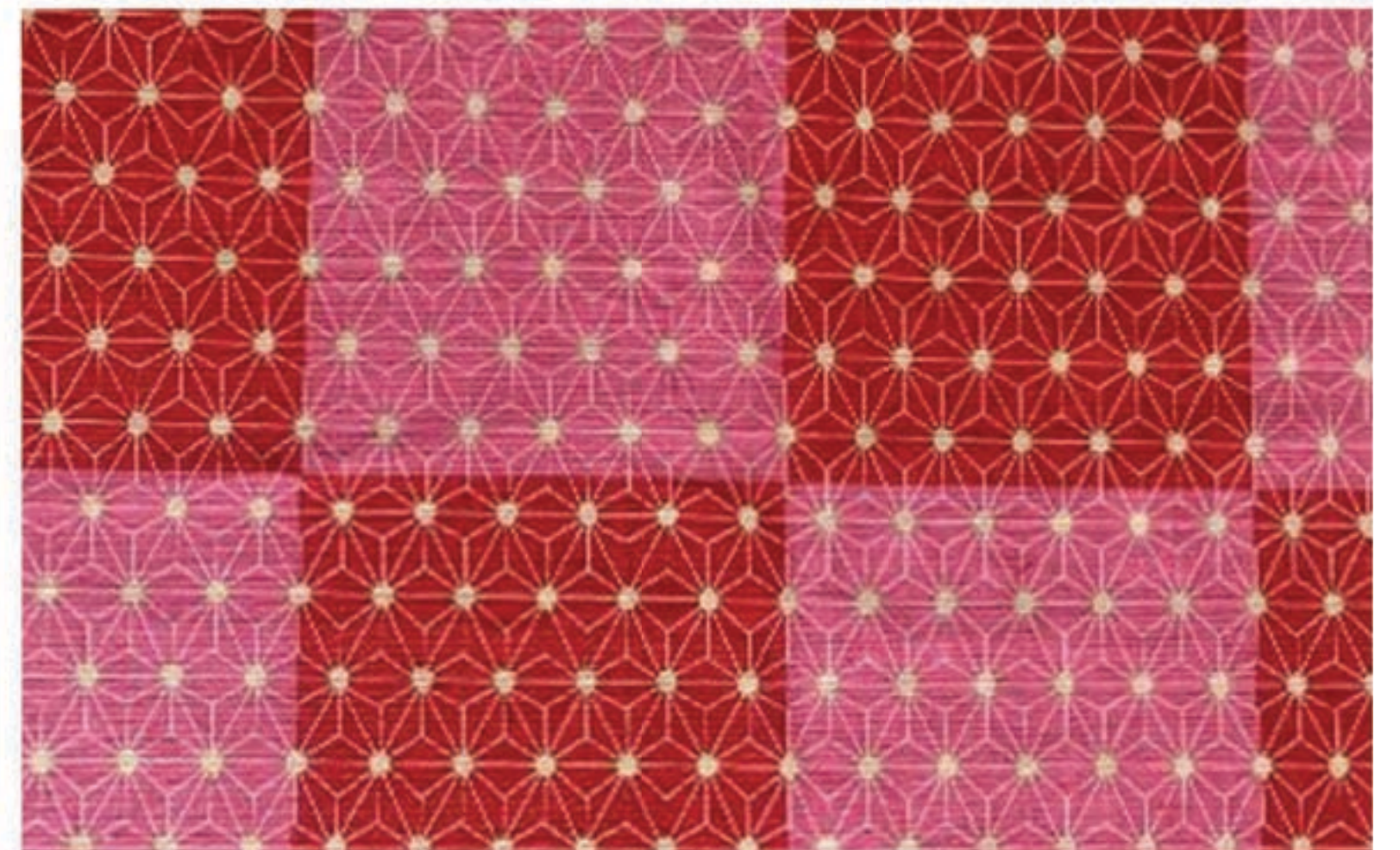
BO-27



BO-41



SI-41



BO-44

HIRU

Caution: the displayed colours, due to technical matters, are approximate and may differ from the original



BO-36



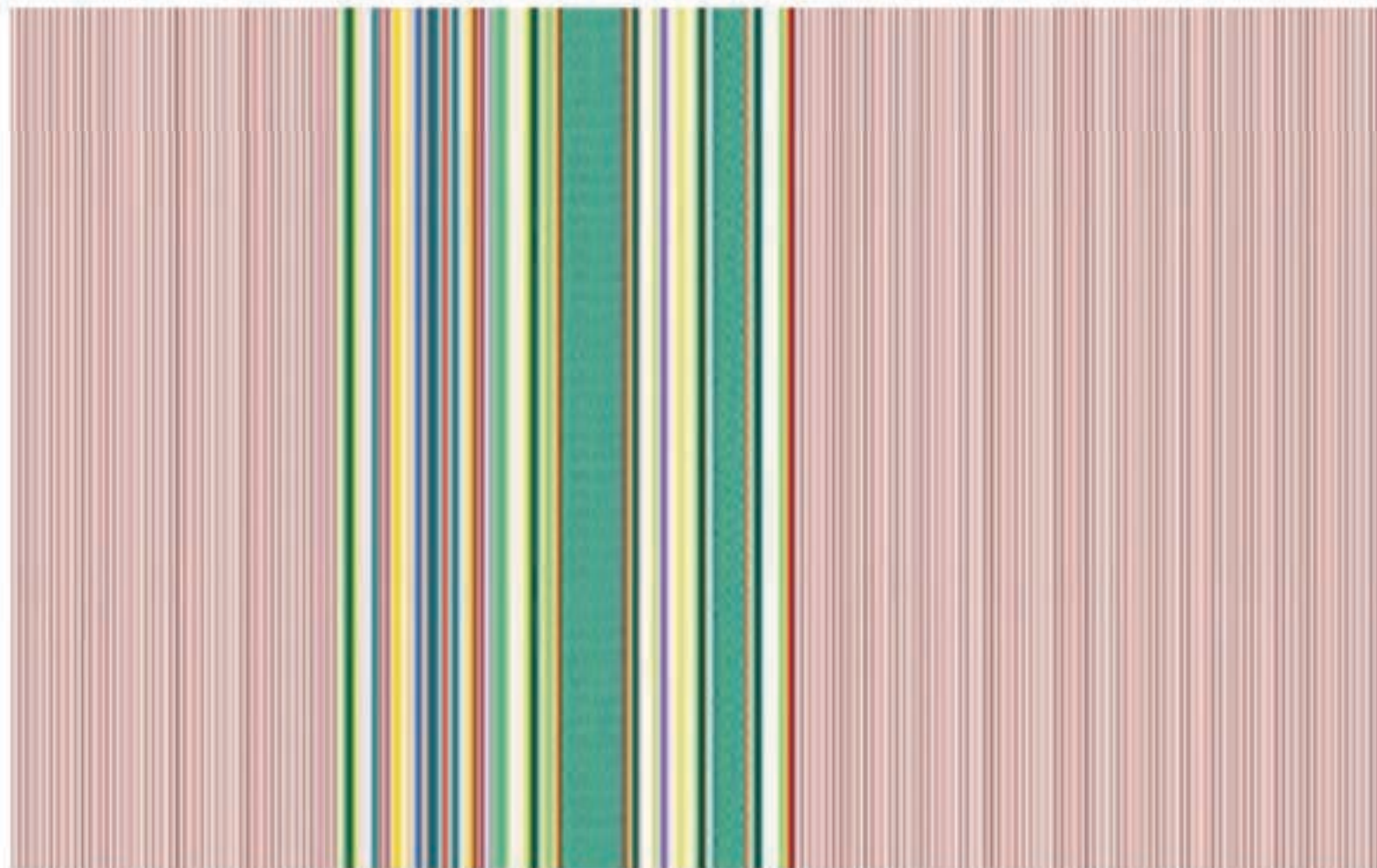
SI-41



BO-40



BO-26



BO-31



SI-11

ASA



BO-01



LI-49



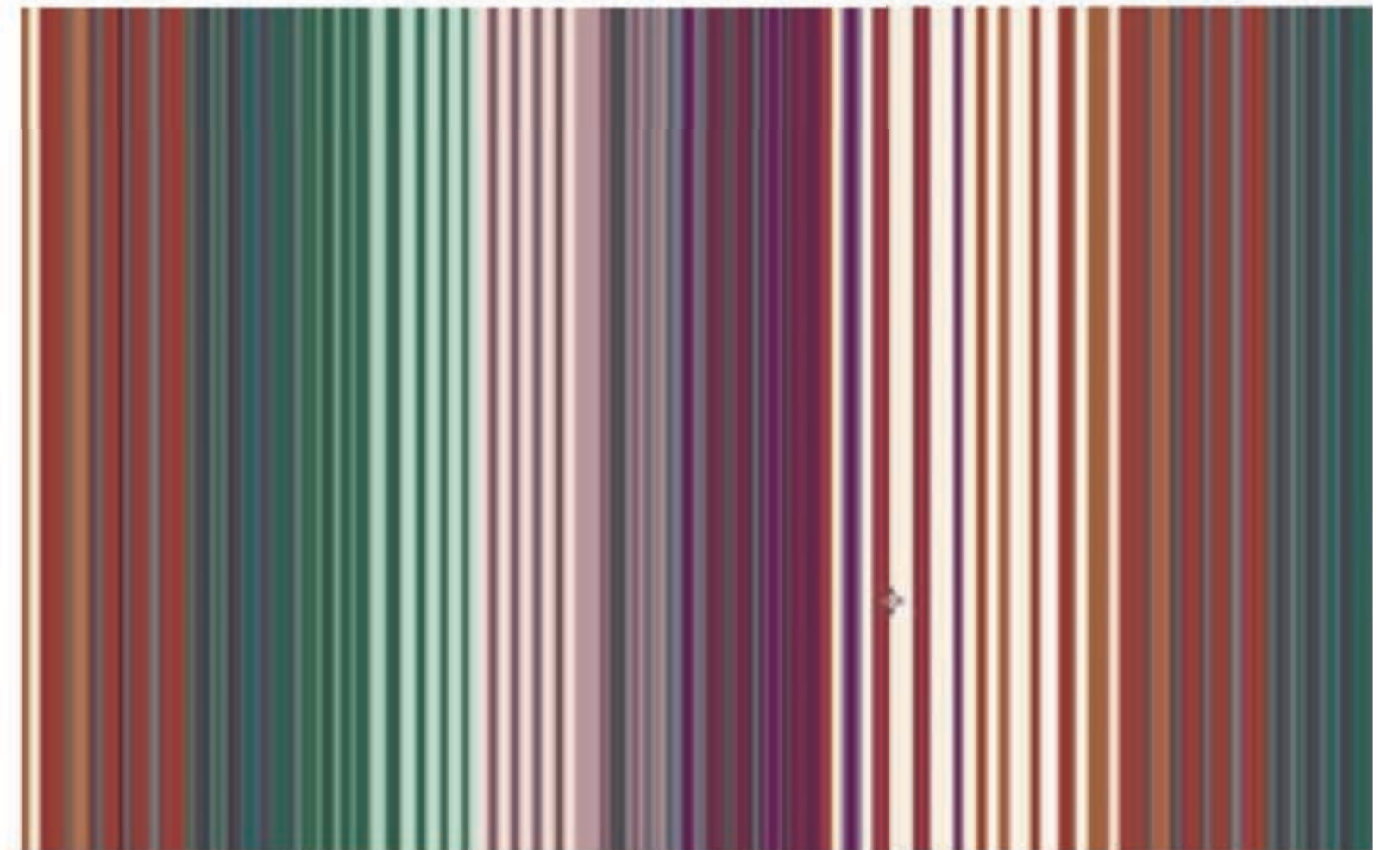
BO-58



BO-06



LI-41



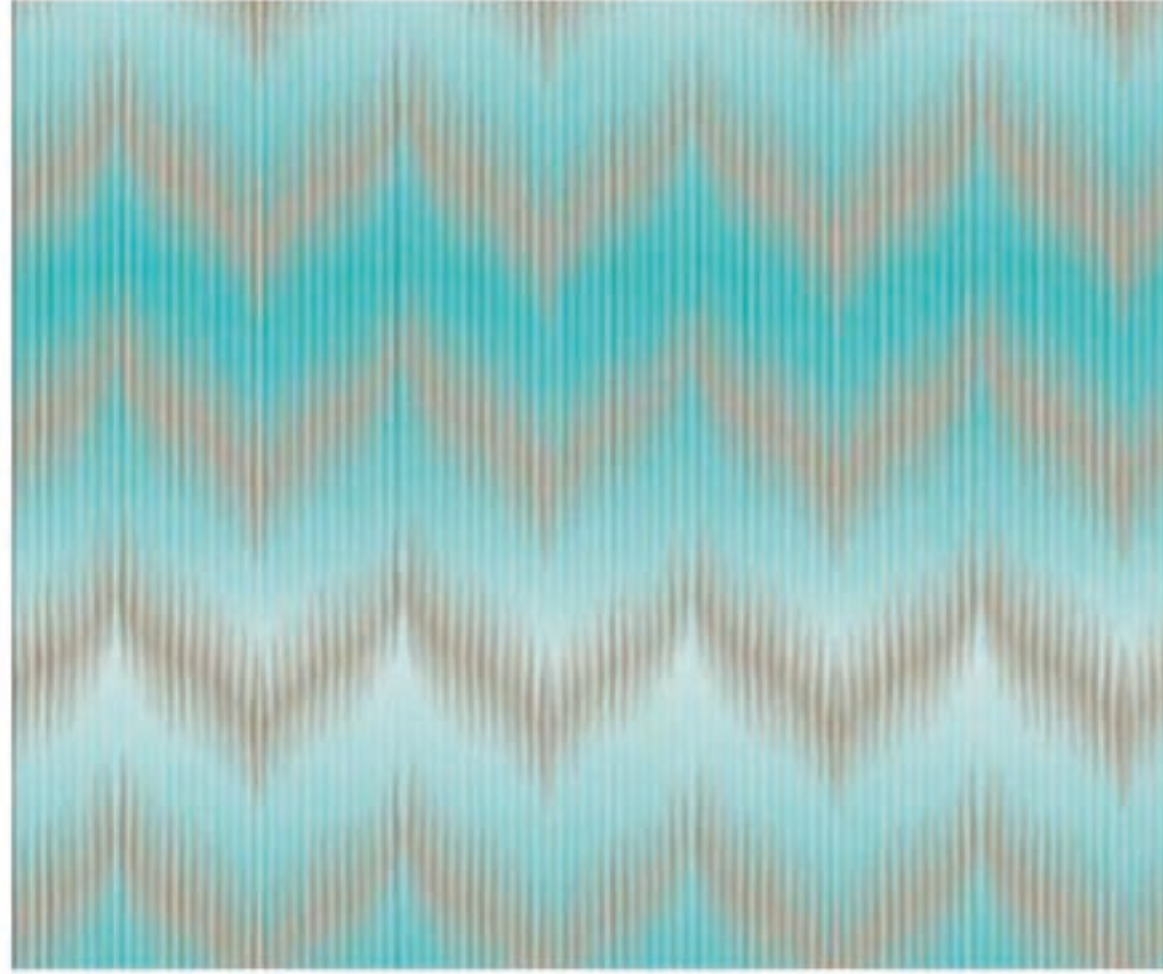
BO-11

NUH

Caution: the displayed colours, due to technical matters, are approximate and may differ from the original



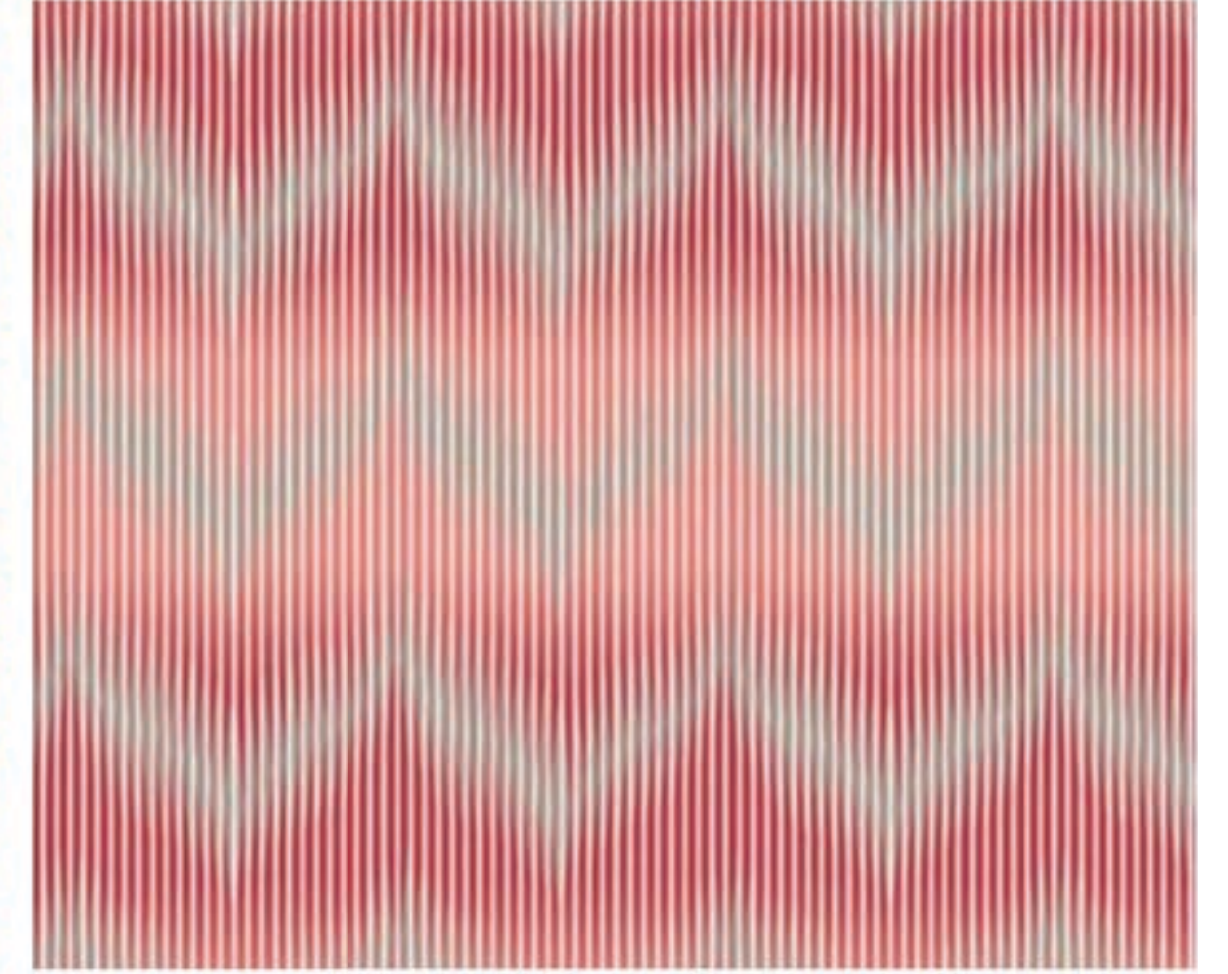
BO-21



BO-66



BO-73



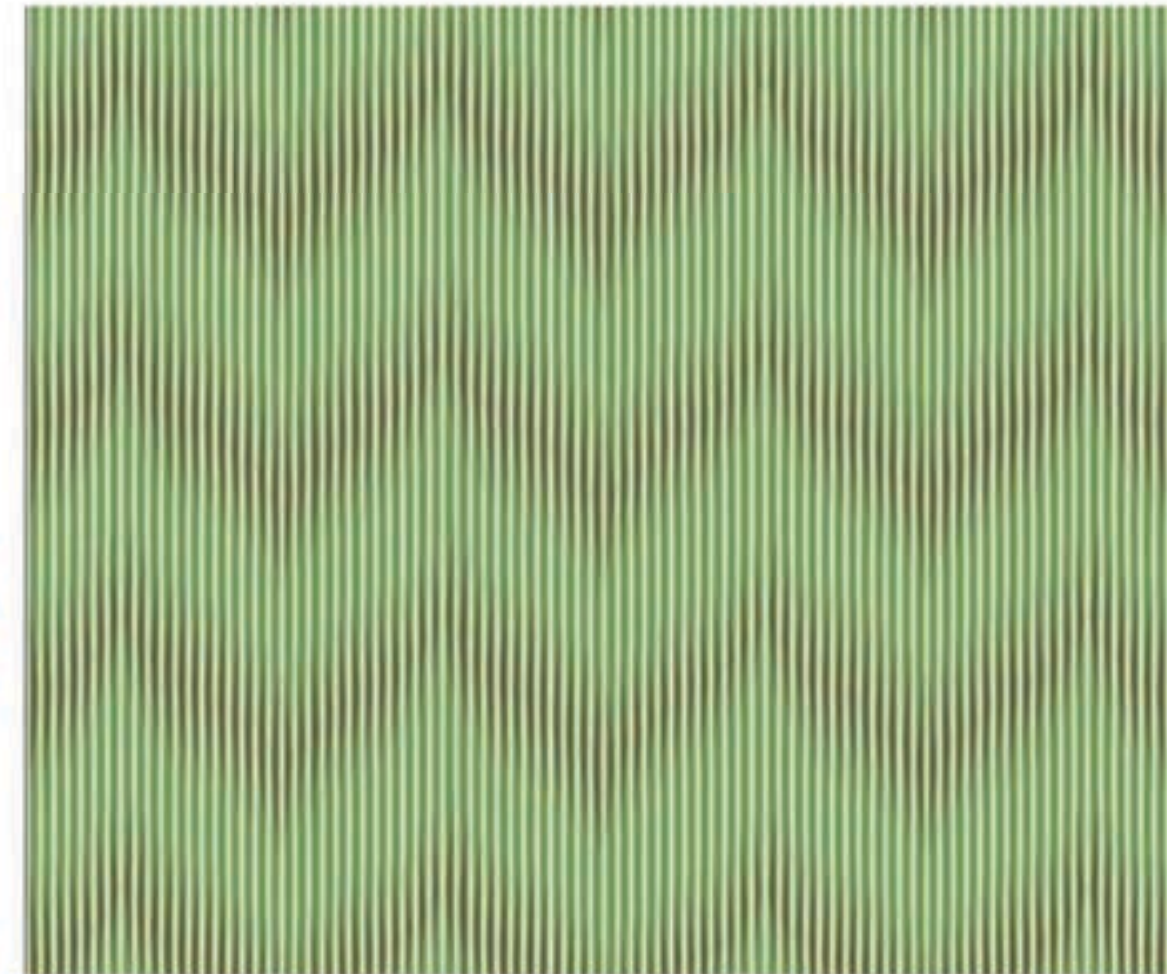
BO-65



BO-48



BO-72

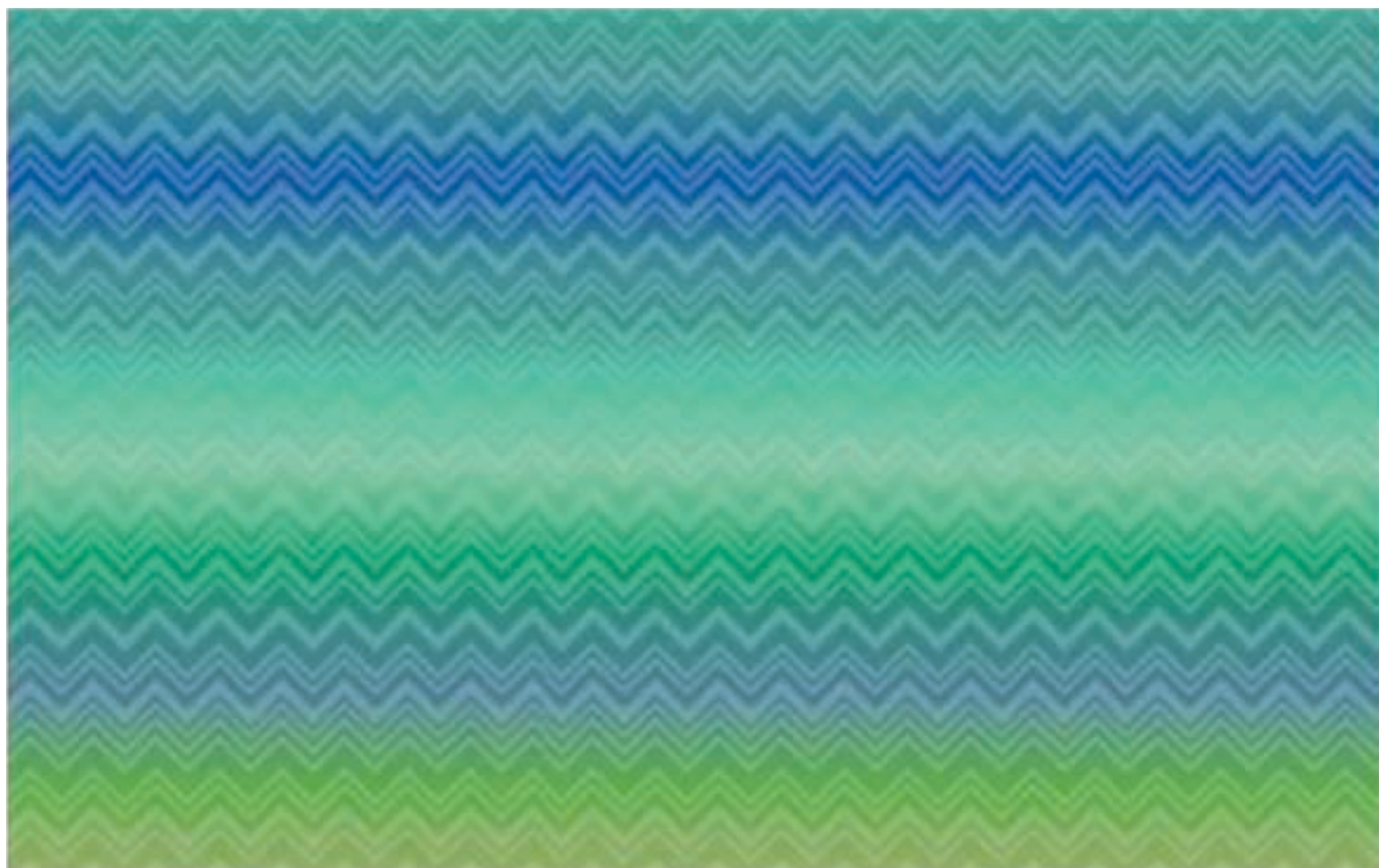


BO-67

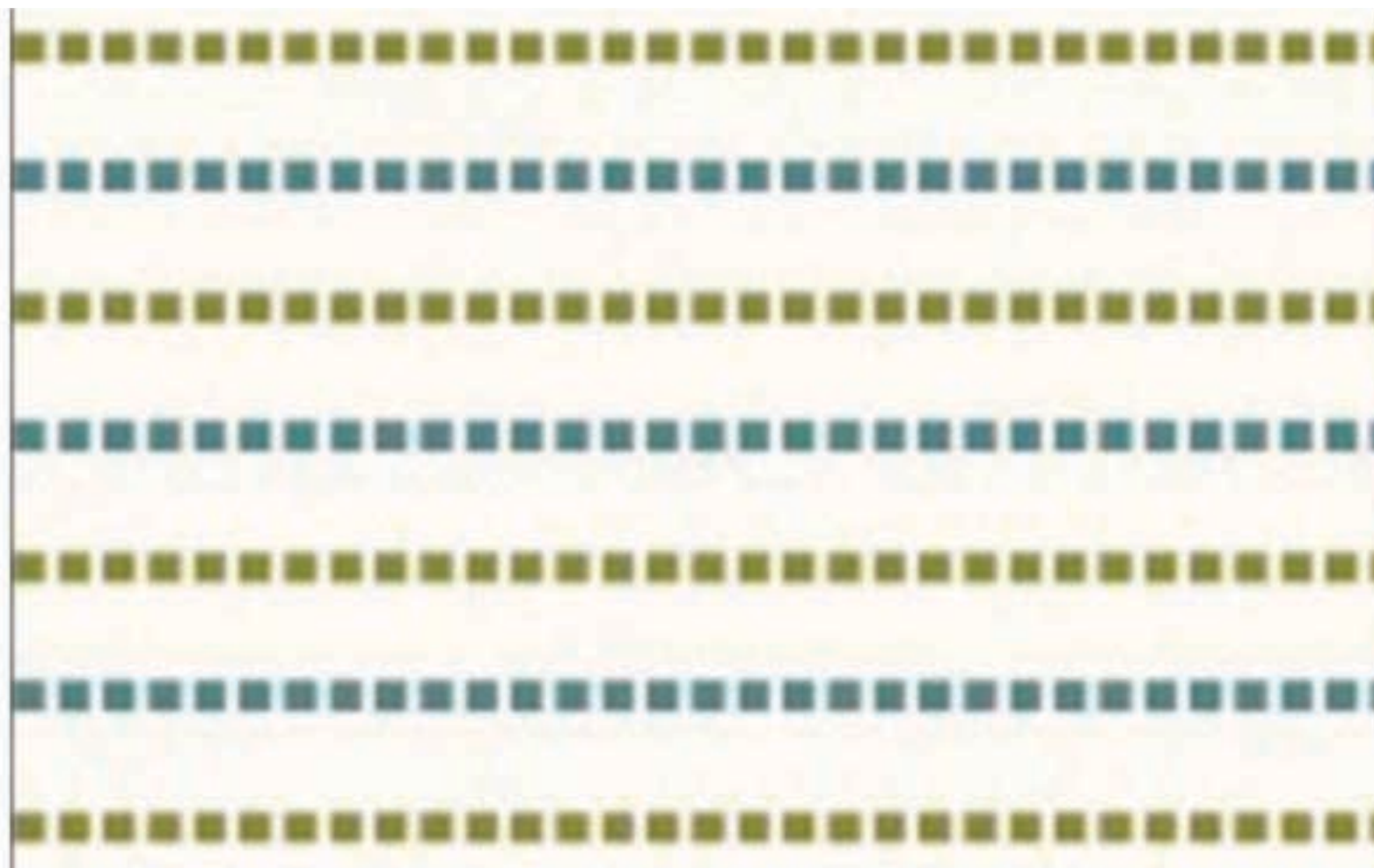


BO-77

KEW



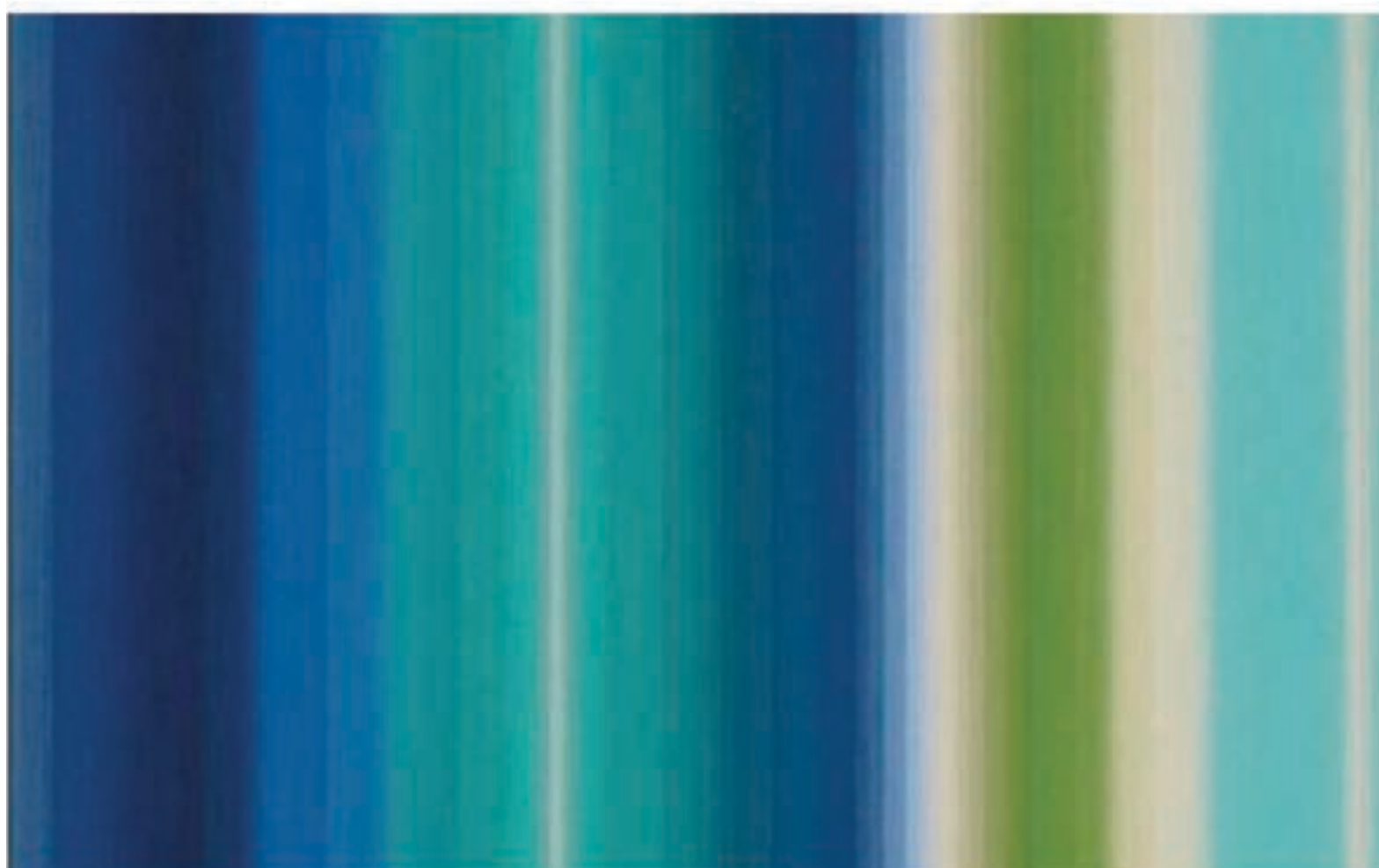
BO-60



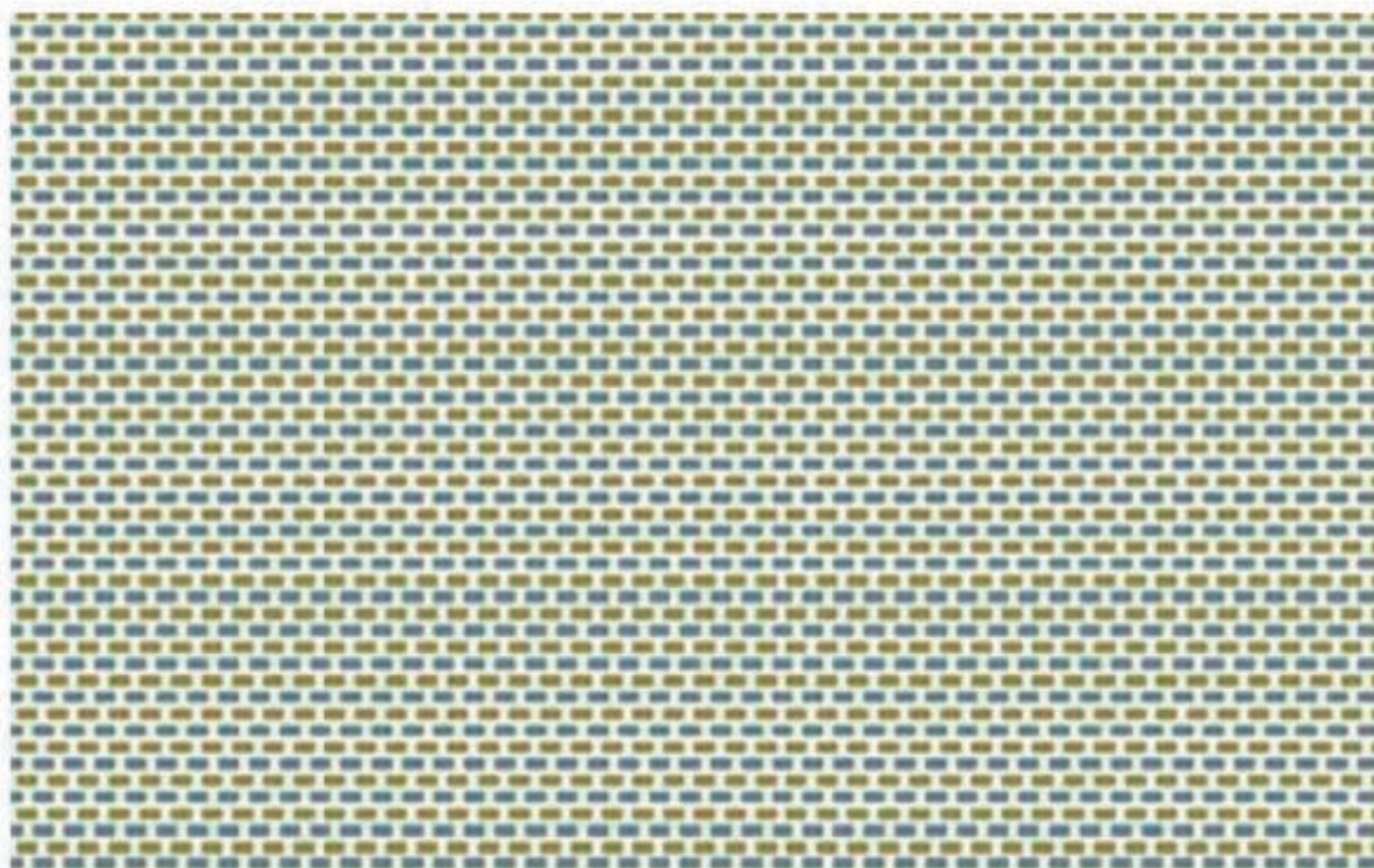
BO-129



BO-57



BO-20



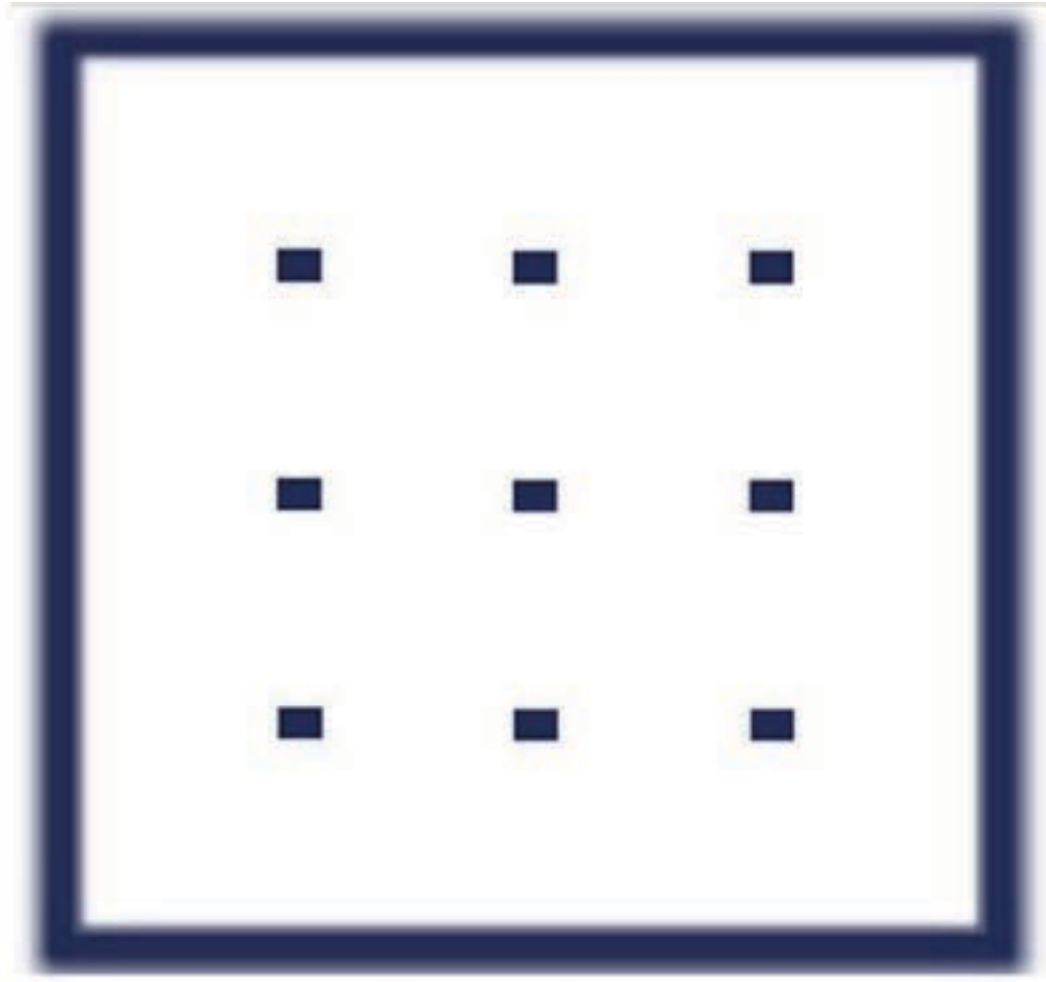
BO-128



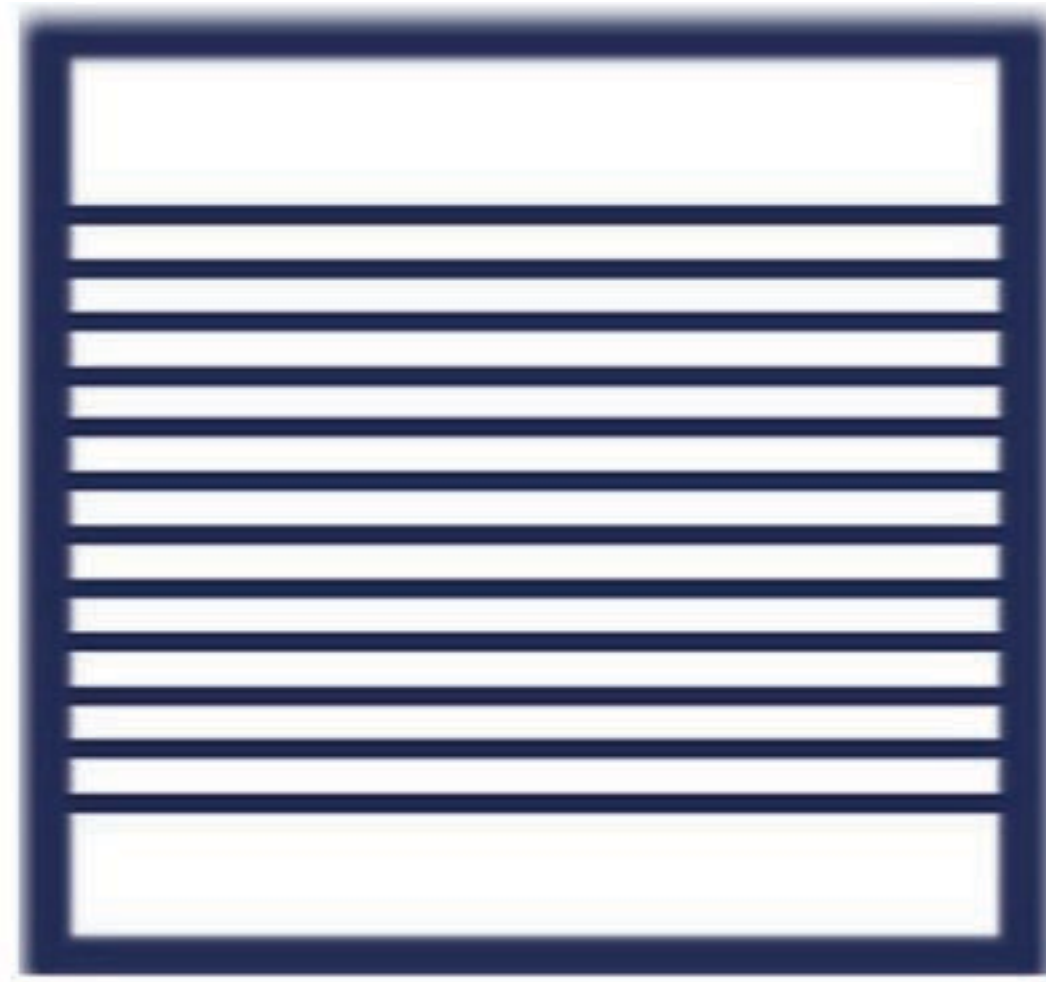
BO-127

IKON

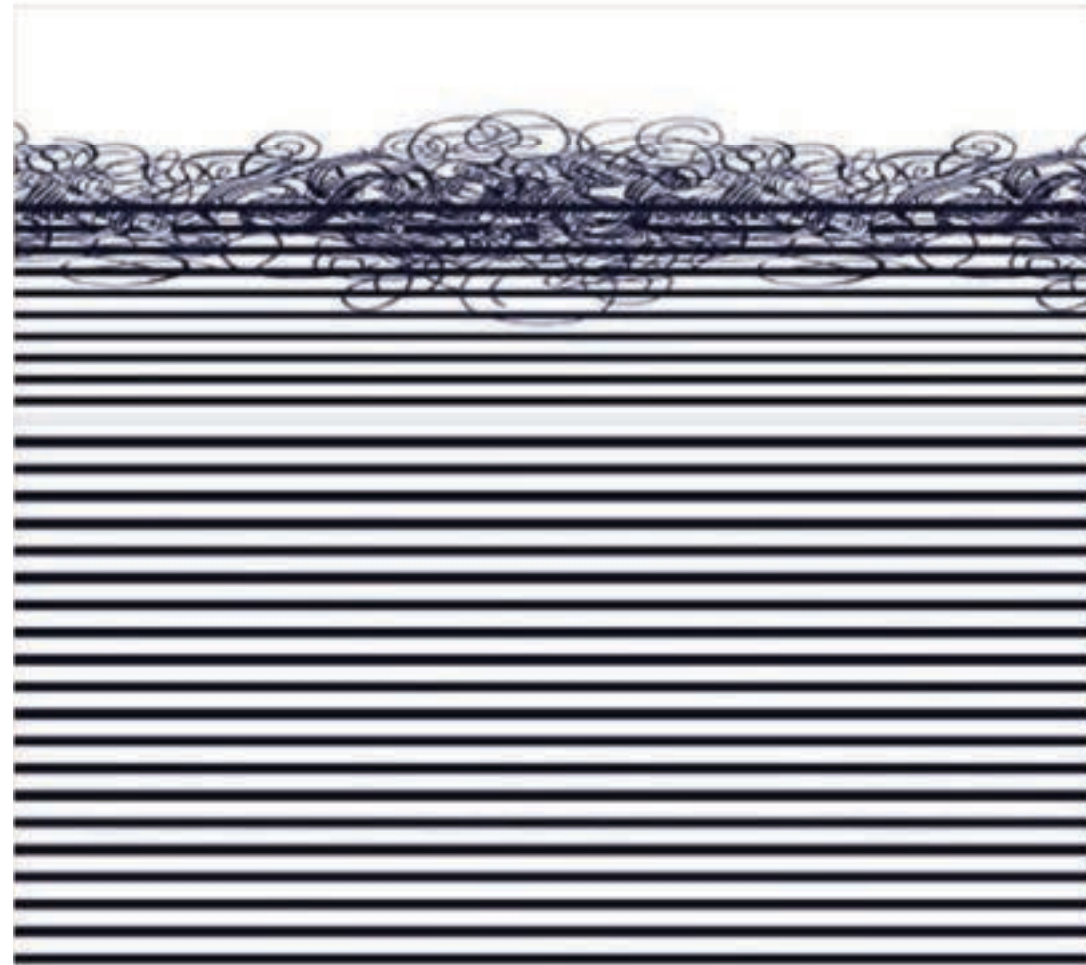
Caution: the displayed colours, due to technical matters, are approximate and may differ from the original



Carre Blue



Marelot



Couture Caligraphie



Couture Dentelle



Couture Tattoo

JPG



Pearl



Cream



Toffee



Trufa



Fango



Mouse



Yellow



Light Grey



Pink



Lavanda



Teja



Bordeaux



Citric



Green



Forest



Turquoise



Sky



Jeans



White



Fog



Taupe



Elephant



Chocolate



Anthracite

APOLLO

FABRIC TYPE	COMPOSITION	DURABILITY	LIGHTFASTNESS	PILLING	FEATURES	FIRE TESTS
Chenille	100% Polyester	100,000 Martindale	4 - 5	4 - 5	Anti-Stain Liquid Repellent	BS 5852 part 1 - Cigarette Test PASS EN 1021-1 - Cigarette Test PASS CA Tech. Bull. 117:2013 / NFPA 260 - Cigarette Test PASS



HUMAN CARE TECHNOLOGY



STANDARD 100
9342CIT
CITEVE

Caution: the displayed colours, due to technical matters, are approximate and may differ from the original



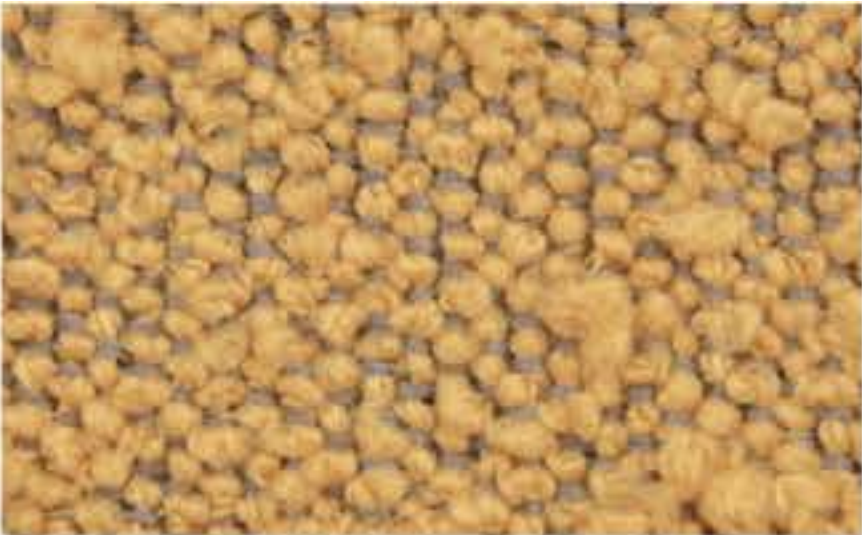
Nata



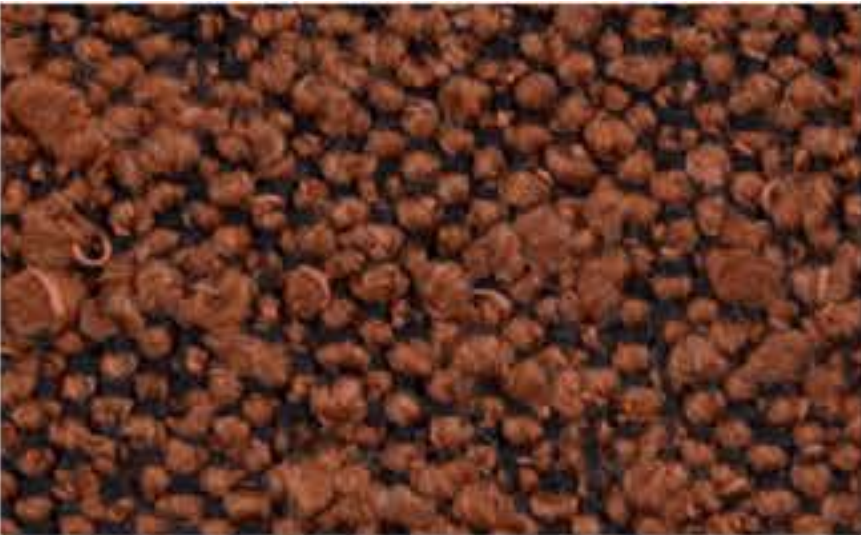
Pearl



Champagne



Mostaza



Brick



Pink



Toffee



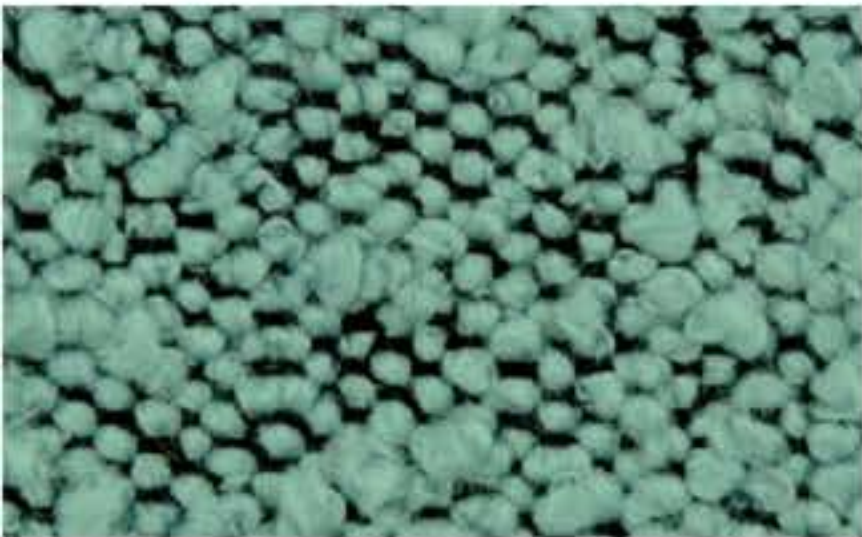
Taupe



Mouse



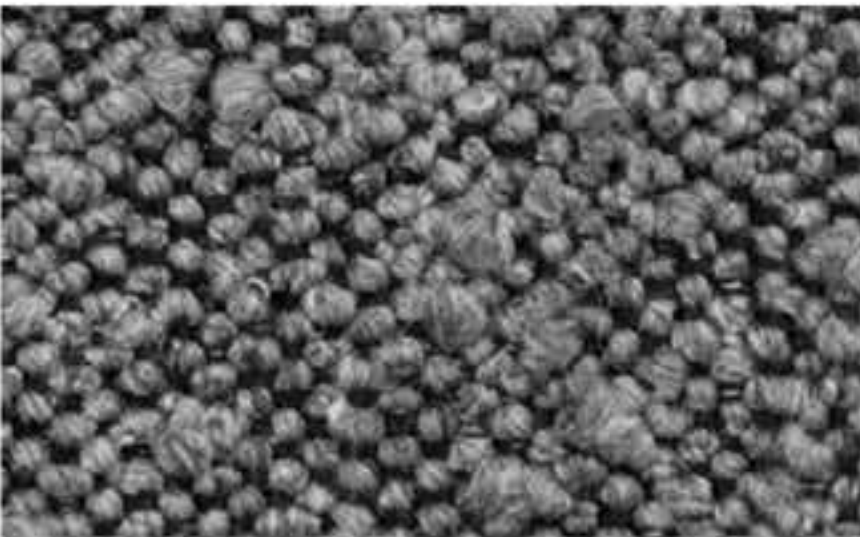
Olive Green



Safira



Atlantic



Graphite



Black

ASCOT

FABRIC TYPE	COMPOSITION	DURABILITY	LIGHTFASTNESS	PILLING	FIRE TESTS
Bouclé	100% Polyester	80,000 Martindale	5	4	BS 5852 part 1 - Cigarette Test PASS EN 1021-1 - Cigarette Test PASS CA Tech. Bull. 117:2013 / NFPA 260 - Cigarette Test PASS



Caution: the displayed colours, due to technical matters, are approximate and may differ from the original



White



Pearl



Toffee



Mostaza



Sienna



Copper



Red



Safira



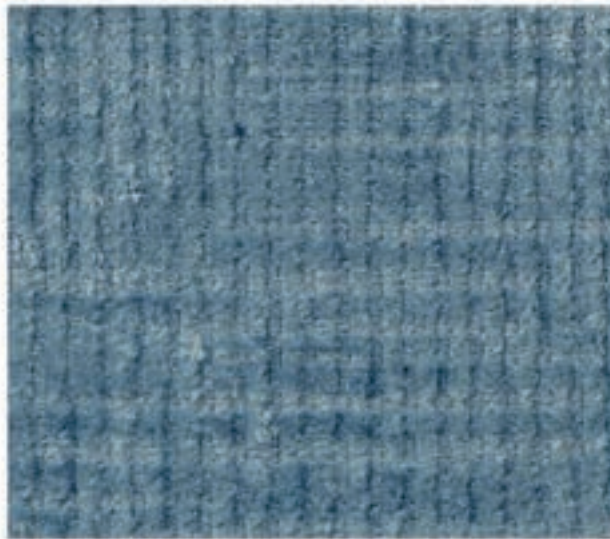
Forest



Taupe



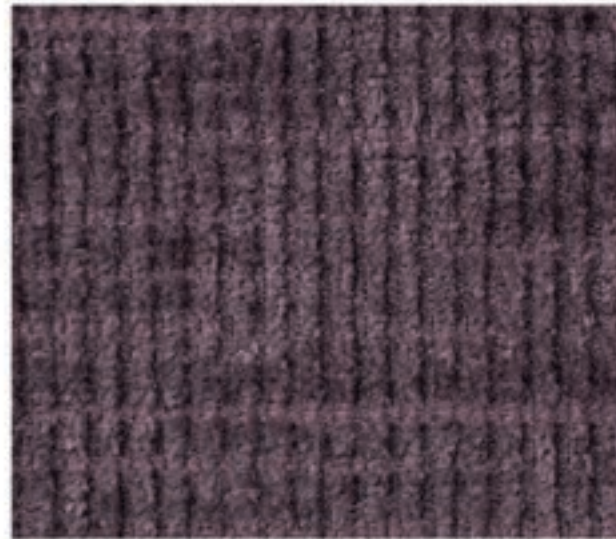
Sky



Ocean



Deep Blue



Deep Purple



Lavanda



Rose



Cement



Truffle



Ash



Black

BALTIC

FABRIC TYPE	COMPOSITION	DURABILITY	LIGHTFASTNESS	PILLING	FEATURES	FIRE TESTS
Chenille	100% Polyester	35,000 Martindale	5	4	Anti-Stain	BS 5852 part 1 - Cigarette Test PASS EN 1021-1 - Cigarette Test PASS CA Tech. Bull. 117:2013 / NFPA 260 - Cigarette Test PASS



BLUEWORLD[®]
HUMAN CARE TECHNOLOGY



STANDARD
100
9342CIT
CITEVE

Caution: the displayed colours, due to technical matters, are approximate and may differ from the original



White



Sand



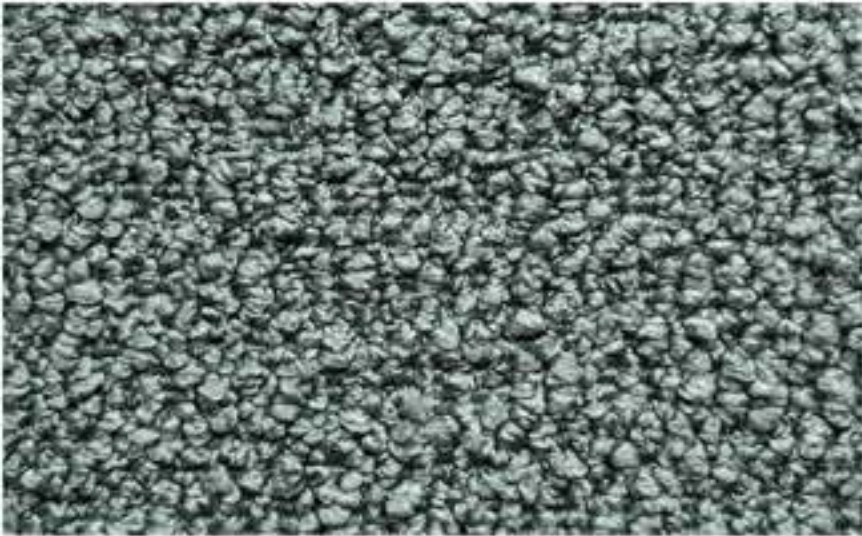
Pale Rose



Paprika



Cinnamon



Aqua



Pine



Hunter



Dark Forest



Fossil



Pebble



Dove



Stone



Shadow



Charcoal

BOUCLÉ

FABRIC TYPE	COMPOSITION	DURABILITY	LIGHTFASTNESS	PILLING
Bouclé	100% Polyester	80,000 Martindale	3	4

Caution: the displayed colours, due to technical matters, are approximate and may differ from the original



Pearl



Beige



Lion



Fog



Stone



Elephant



Taupe



Ebony



Sand



Light Violet



Pink



Salmon



Cuoio



Terracotta



Marsala



Bordeaux



Mostaza



Olive



Forest



Deep Green



Safira



Dark Blue



Ocean



Deep Blue

CASINO

FABRIC TYPE	COMPOSITION	DURABILITY	LIGHTFASTNESS	PILLING	FEATURES	FIRE TESTS
Velvet - Matte Finish	100% Polyester	100,000 Martindale	4 - 5	4 - 5	Anti-Stain Pet Friendly	BS 5852 part 1 - Cigarette Test PASS EN 1021-1 - Cigarette Test PASS CA Tech. Bull. 117:2013 / NFPA 260 - Cigarette Test PASS



BLUEWORLD[®]
HUMAN CARE TECHNOLOGY



STANDARD
100
9342CIT
CITEVE

Caution: the displayed colours, due to technical matters, are approximate and may differ from the original



HARALD

FABRIC TYPE	COMPOSITION	DURABILITY	LIGHTFASTNESS	PILLING	FEATURES	FIRE TESTS
Velvet - Soft Sheen	100% Cotton	50,000 Martindale	3	5	Liquid Repellent	BS 5852 part 1 - Cigarette Test PASS EN 1021-1 - Cigarette Test PASS CA Tech. Bull. 117:2013 / NFPA 260 - Cigarette Test PASS

Caution: the displayed colours, due to technical matters, are approximate and may differ from the original



MACAU

FABRIC TYPE	COMPOSITION	DURABILITY	LIGHTFASTNESS	PILLING	FEATURES	FIRE TESTS
Velvet - Soft Sheen	100% Polyester	90,000 Martindale	5	4 - 5	Anti-Stain Pet Friendly	BS 5852 part 1 - Cigarette Test PASS EN 1021-1 - Cigarette Test PASS CA Tech. Bull. 117:2013 / NFPA 260 - Cigarette Test PASS



BLUEWORLD[®]
HUMAN CARE TECHNOLOGY



STANDARD
100
9342CIT
CITEVE

Caution: the displayed colours, due to technical matters, are approximate and may differ from the original



Nata Toffee Sand Truffle Mud Taupe Chocolate Ebony

Rose Lavanda Purple Coral Red Yellow Mostaza Forest

Lima Safria Sky Navy Ocean Ash Anthracite Black

SCALA	FABRIC TYPE	COMPOSITION	DURABILITY	LIGHTFASTNESS	PILLING	FEATURES	FIRE TESTS
	Corduroy	100% Polyester	80,000 Martindale	5	3 - 4	Anti-Stain	BS 5852 part 1 - Cigarette Test PASS
							EN 1021-1 - Cigarette Test PASS
							CA Tech. Bull. 117:2013 / NFPA 260 - Cigarette Test PASS



Caution: the displayed colours, due to technical matters, are approximate and may differ from the original



Pearl



Ivory



Toffee



Pink



Marsala



Deep Purple



Mostaza



Mud



Truffle



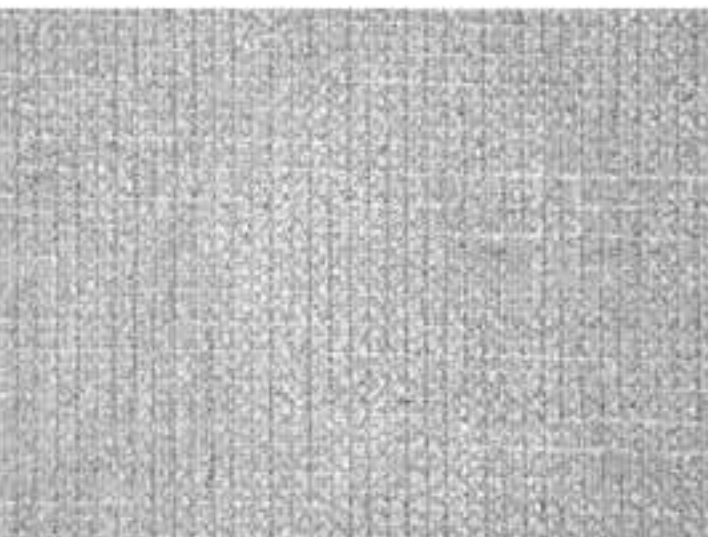
Green



Forest



Chocolate



Cement



Fog



Ocean



Taupe



Anthracite



Black

TRIBU

FABRIC TYPE	COMPOSITION	DURABILITY	LIGHTFASTNESS	PILLING	FEATURES	FIRE TESTS
Chenille	100% Polyester	35,000 Martindale	5	4	Anti-Stain	BS 5852 part 1 - Cigarette Test PASS EN 1021-1 - Cigarette Test PASS CA Tech. Bull. 117:2013 / NFPA 260 - Cigarette Test PASS



BLUEWORLD[®]
HUMAN CARE TECHNOLOGY



STANDARD
100
9342CIT
CITEVE

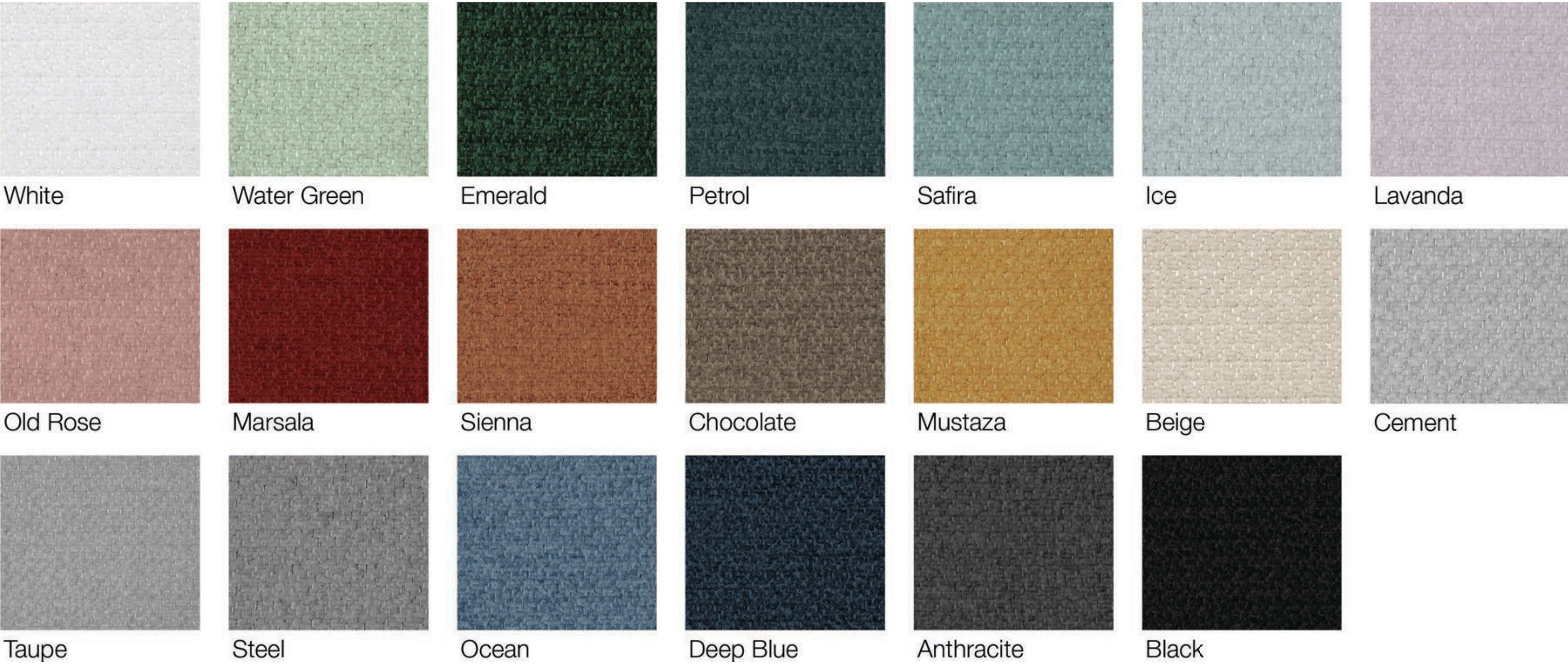
Caution: the displayed colours, due to technical matters, are approximate and may differ from the original



VELVETEEN

FABRIC TYPE	COMPOSITION	DURABILITY	LIGHTFASTNESS	PILLING
Velvet - Matte Sheen	100% Polyester	60,000 Martindale	4	4

Caution: the displayed colours, due to technical matters, are approximate and may differ from the original



VIENNA

FABRIC TYPE	COMPOSITION	DURABILITY	LIGHTFASTNESS	PILLING	FEATURES	FIRE TESTS
Chenille	100% Polyester	65,000 Martindale	5	4	Anti-Stain	BS 5852 part 1 - Cigarette Test PASS EN 1021-1 - Cigarette Test PASS CA Tech. Bull. 117:2013 / NFPA 260 - Cigarette Test PASS



Caution: the displayed colours, due to technical matters, are approximate and may differ from the original

Not all available fabrics and colours are listed on the site. Please contact us if you would like more information on available fabrics and colours.

Email: info@nue-modern.com

www.nue-modern.com