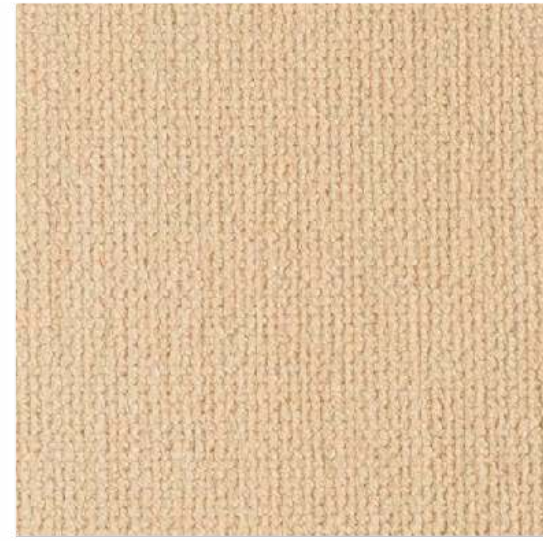


Pearl



Cream



Toffee



Trufa



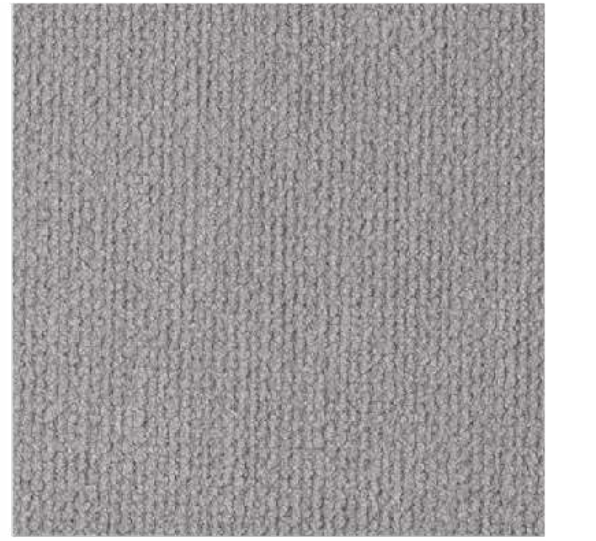
Fango



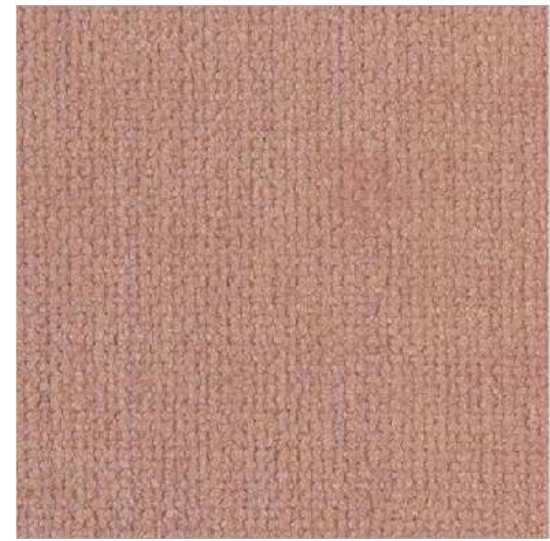
Mouse



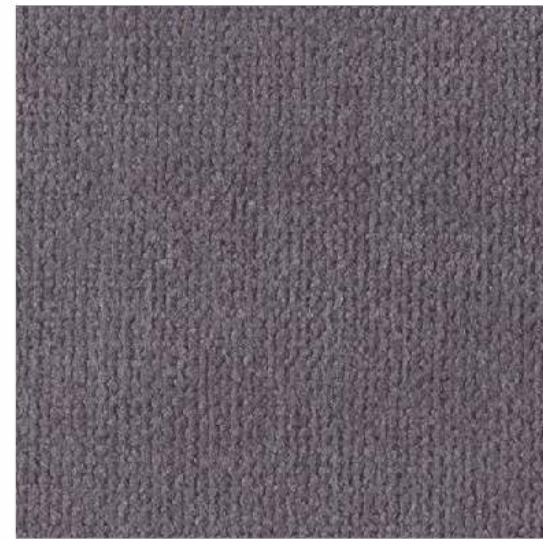
Yellow



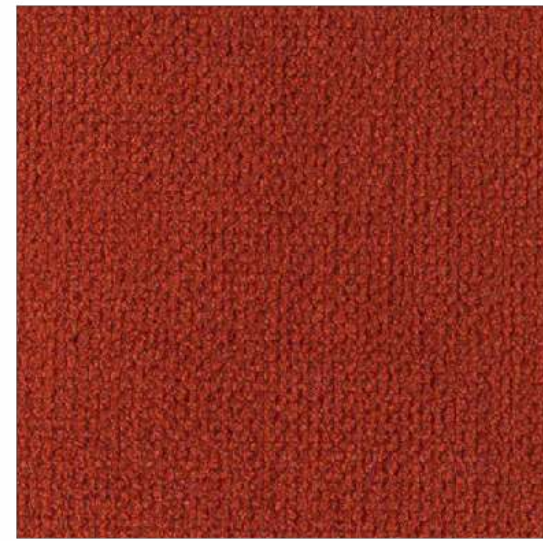
Light Grey



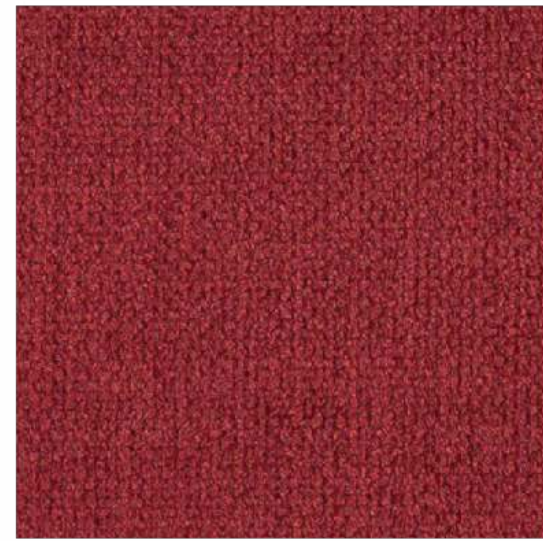
Pink



Lavanda



Teja



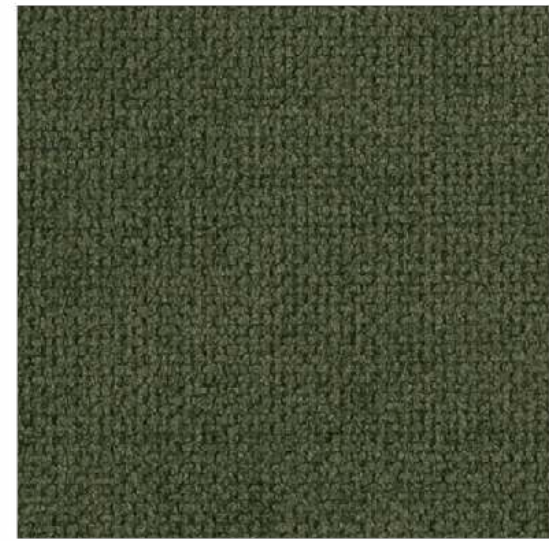
Bordeaux



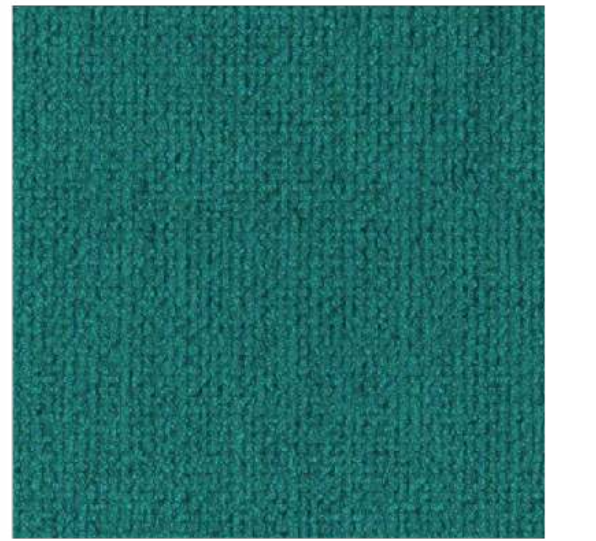
Citric



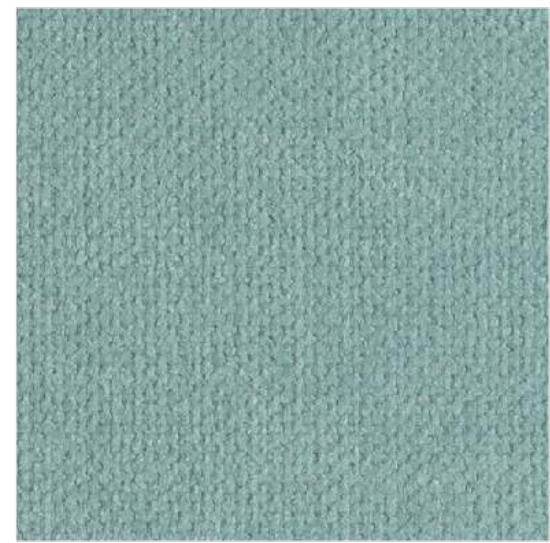
Green



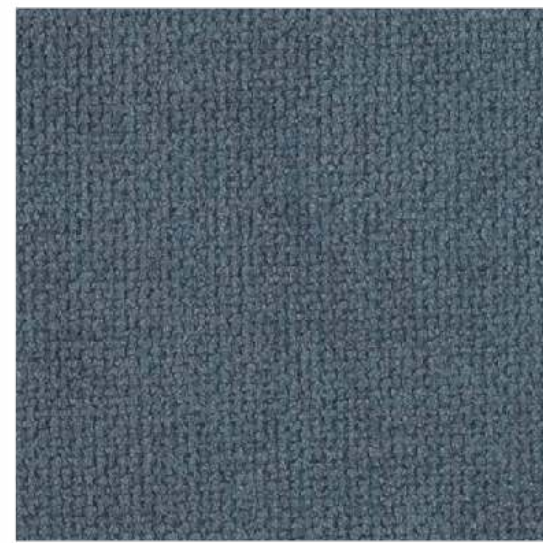
Forest



Turquoise



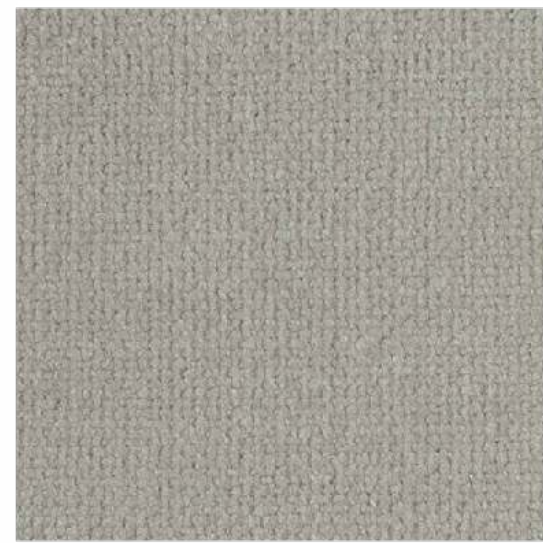
Sky



Jeans



White



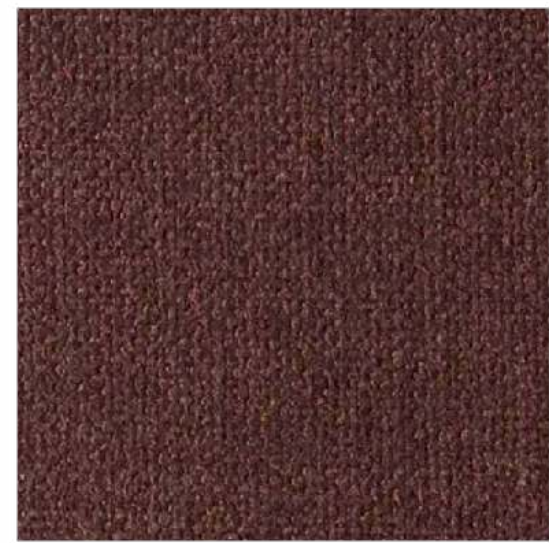
Fog



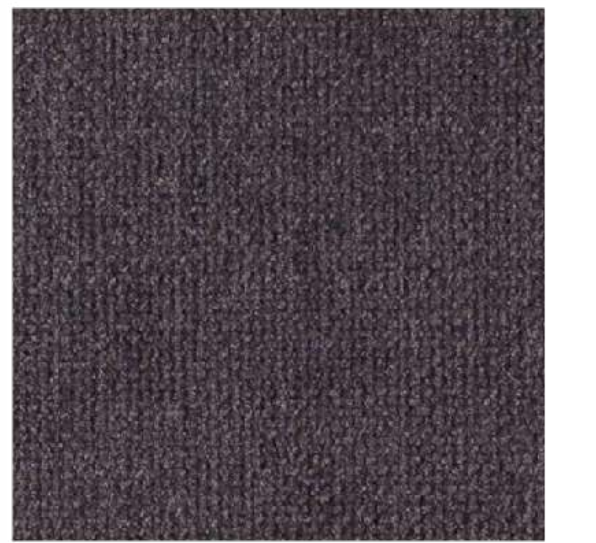
Taupe



Elephant



Chocolate



Anthracite

APOLLO

FABRIC TYPE	COMPOSITION	DURABILITY	LIGHTFASTNESS	PILLING	FEATURES	FIRE TESTS
Chenille	100% Polyester	100,000 Martindale	4 - 5	4 - 5	Anti-Stain Liquid Repellent	BS 5852 part 1 - Cigarette Test PASS EN 1021-1 - Cigarette Test PASS CA Tech. Bull. 117:2013 / NFPA 260 - Cigarette Test PASS

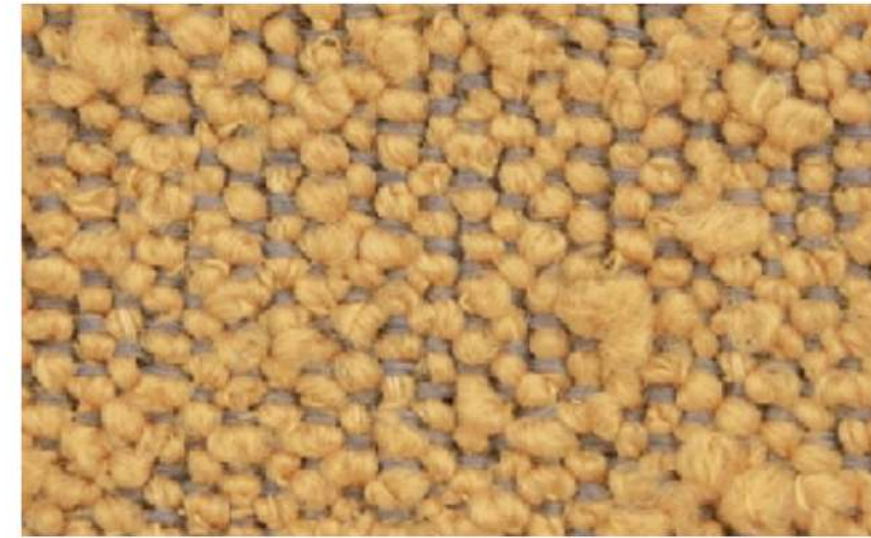


BLUEWORLD[®]
HUMAN CARE TECHNOLOGY



STANDARD
100
9342CIT
CITEVE

Caution: the displayed colours, due to technical matters, are approximate and may differ from the original



Nata

Pearl

Champagne

Mostaza

Brick



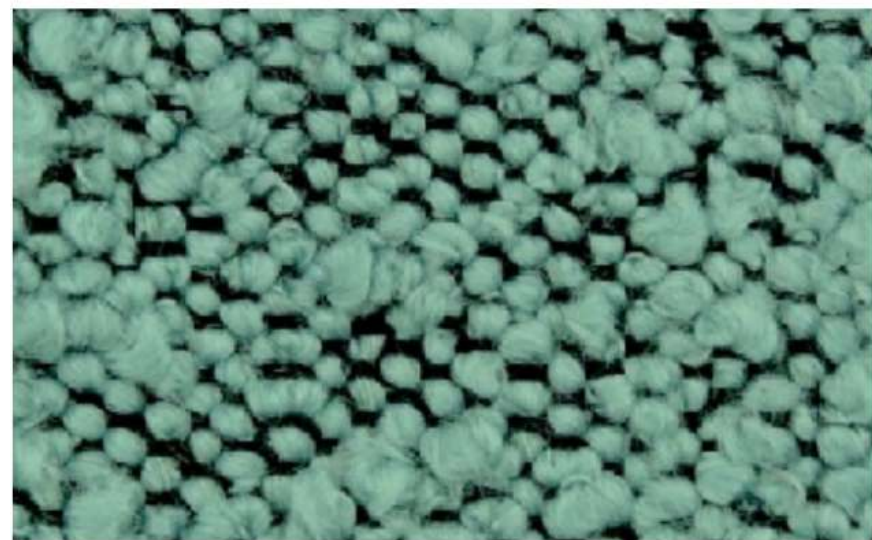
Pink

Toffee

Taupe

Mouse

Olive Green



Safira

Atlantic

Graphite

Black

ASCOT

FABRIC TYPE

Bouclé

COMPOSITION

100% Polyester

DURABILITY

80,000 Martindale

LIGHTFASTNESS

5

PILLING

4

FIRE TESTS

BS 5852 part 1 - Cigarette Test PASS

EN 1021-1 - Cigarette Test PASS

CA Tech. Bull. 117:2013 / NFPA 260 - Cigarette Test PASS

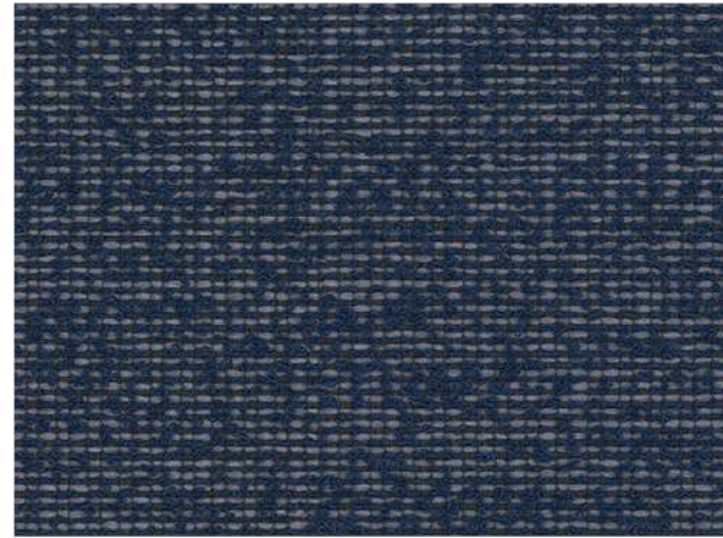


BLUEWORLD[®]
HUMAN CARE TECHNOLOGY

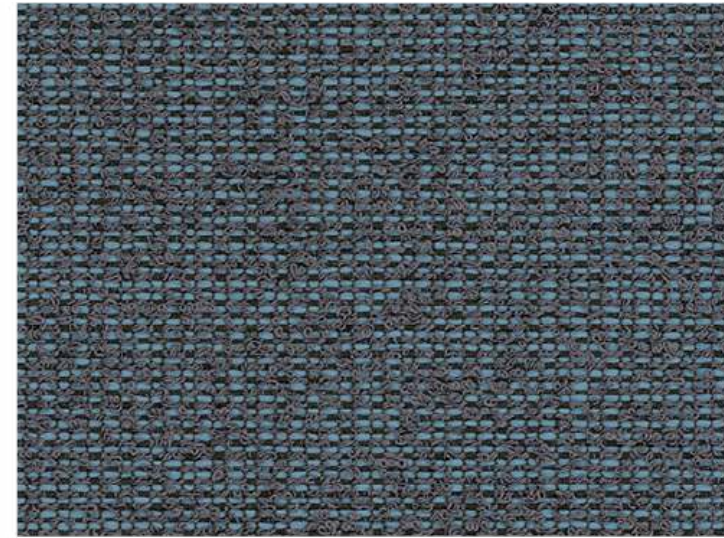


STANDARD
100
9342CIT
CITEVE

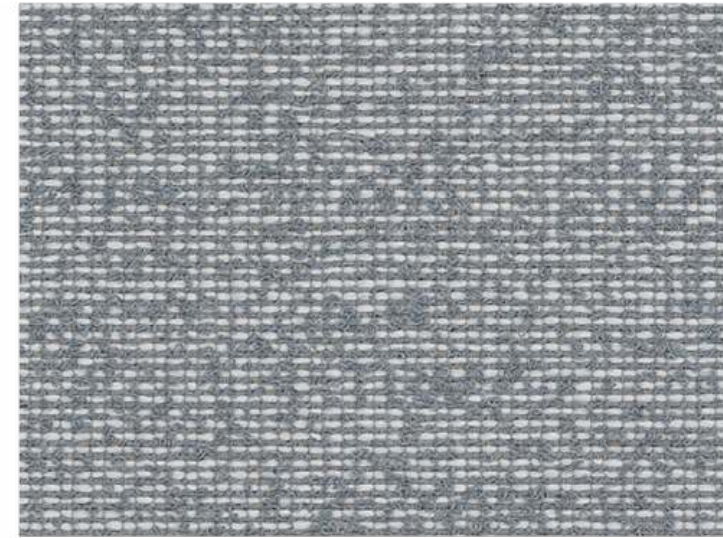
Caution: the displayed colours, due to technical matters, are approximate and may differ from the original



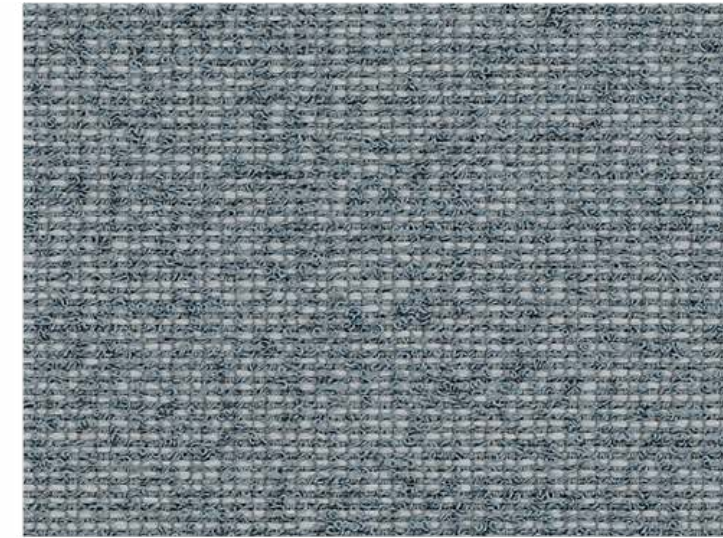
Saturation



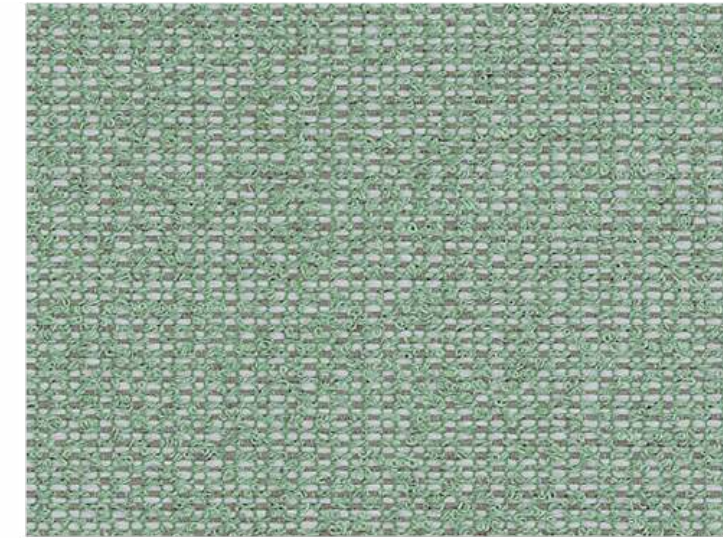
Tempera



Purity



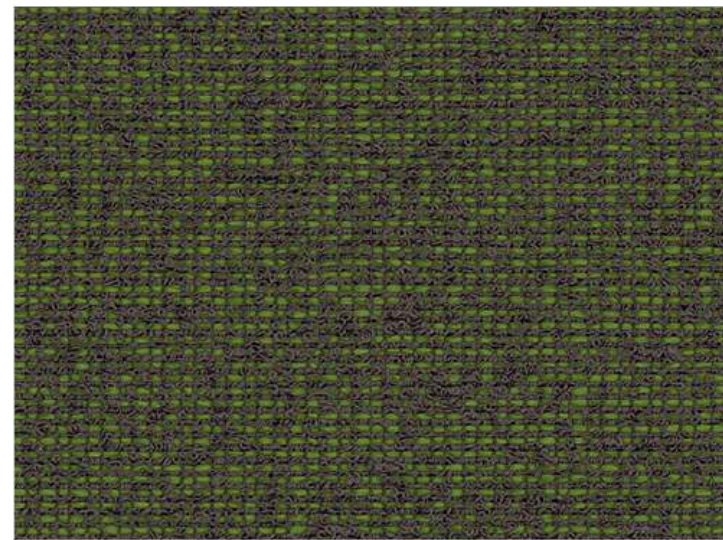
Prism



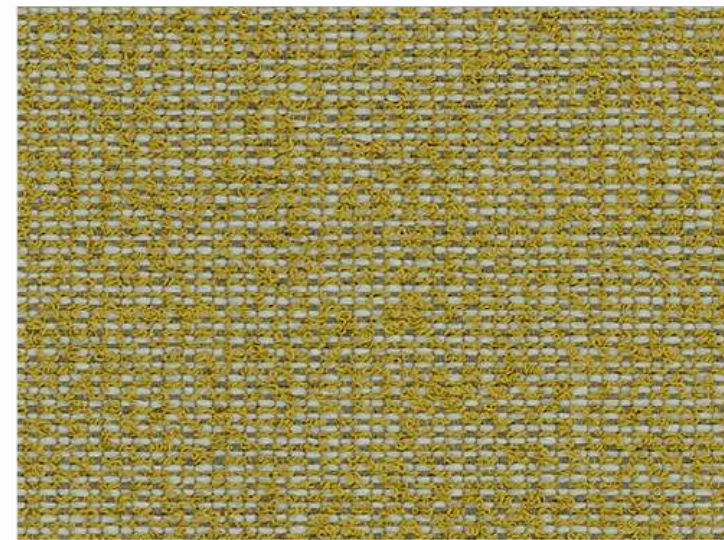
Gamut



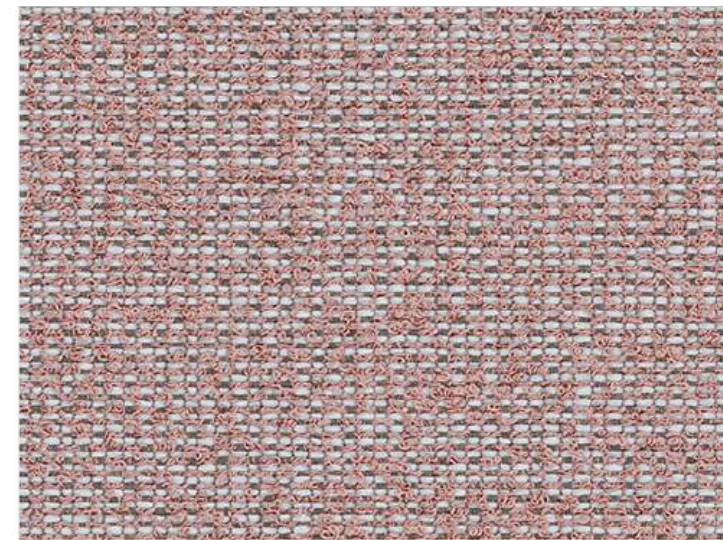
Tone



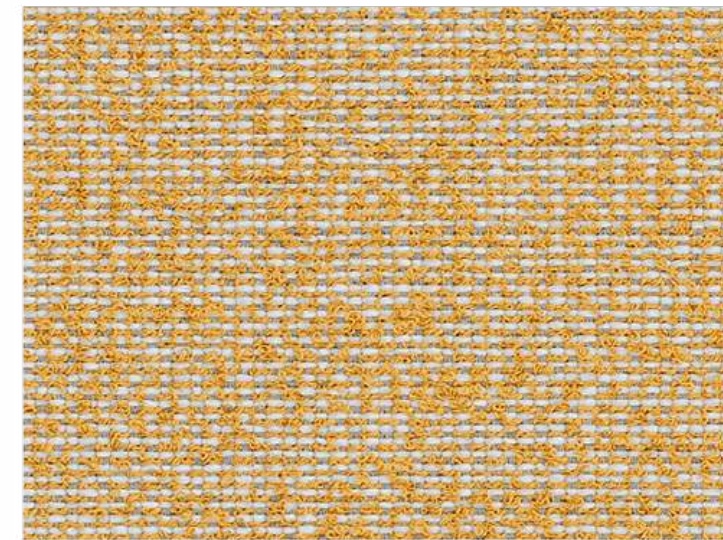
Goethe



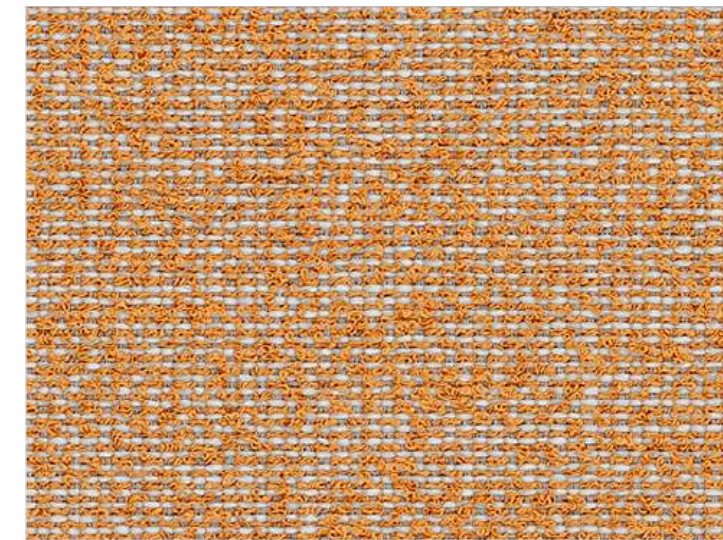
Hue



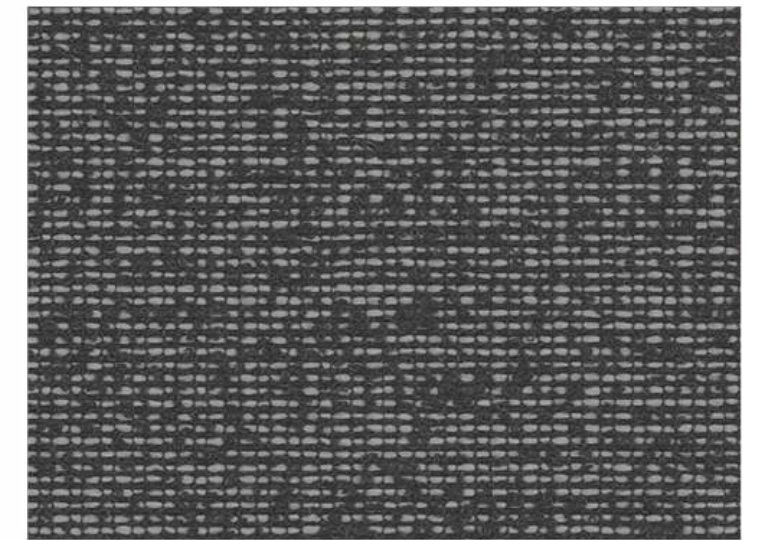
Pigment



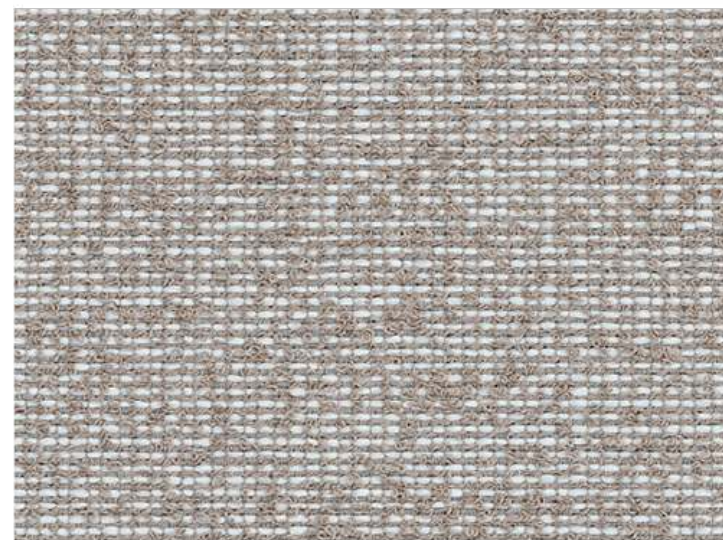
Glow



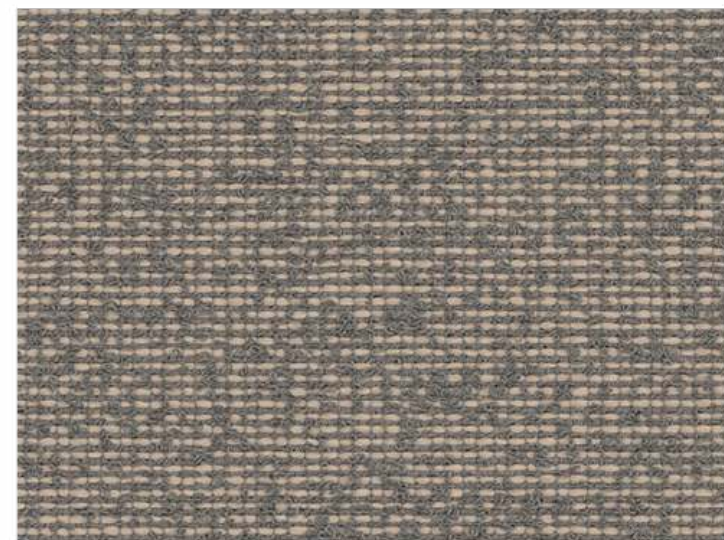
Newton



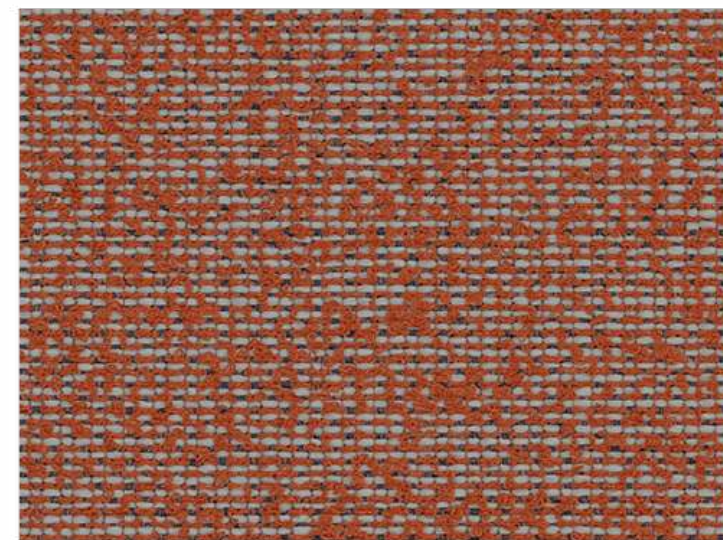
Dark



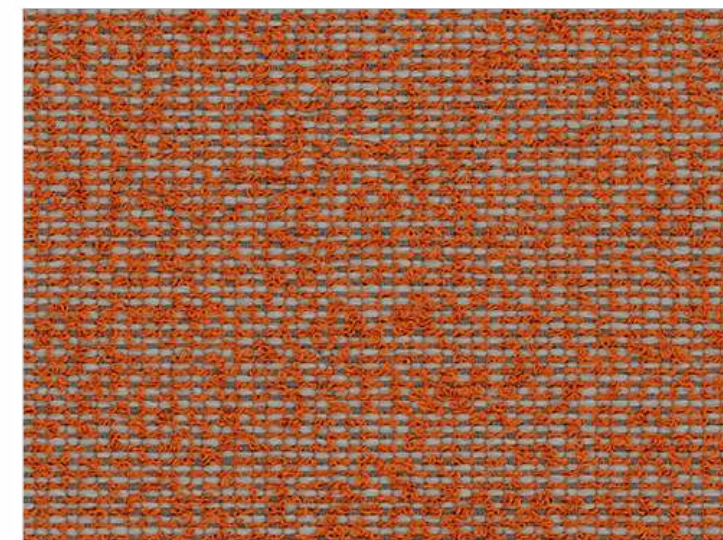
Hint



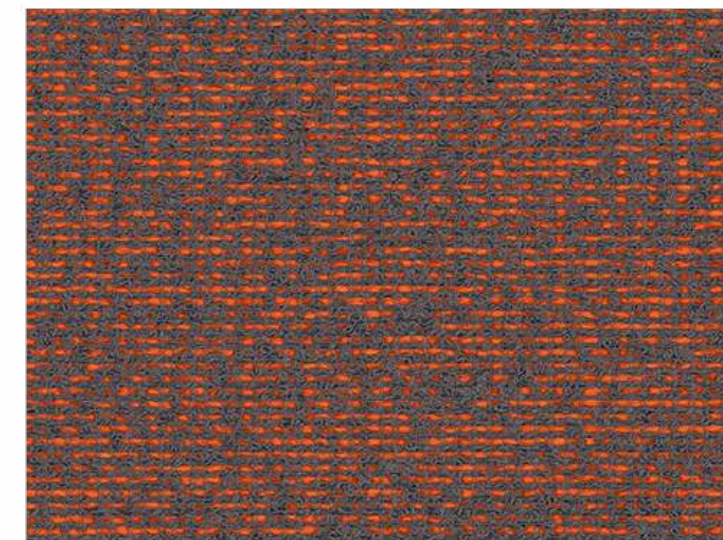
Trace



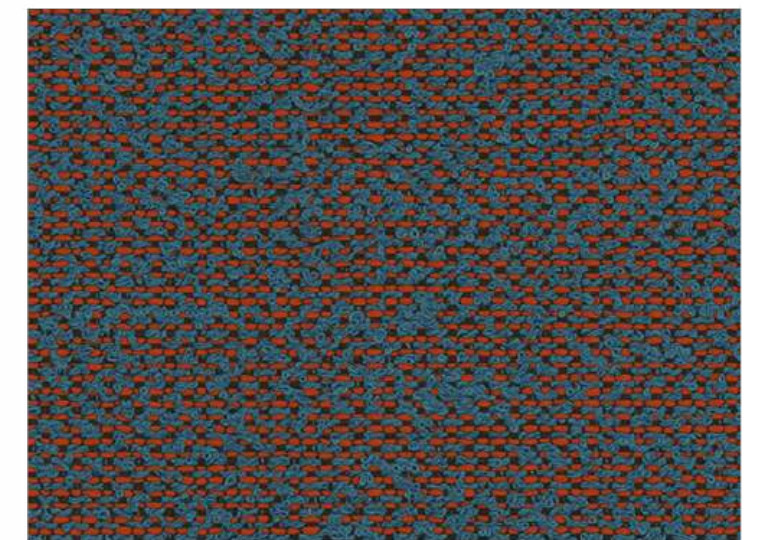
Render



Diad



Radiance



Harlequin

AUCKLAND

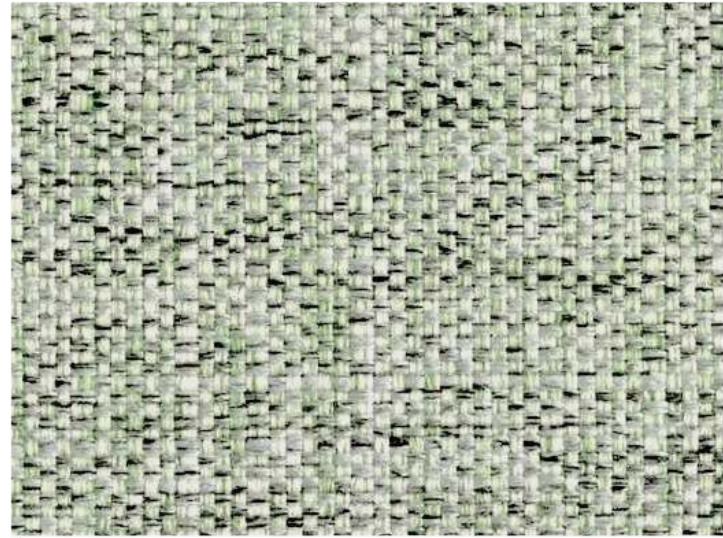
By Vescom



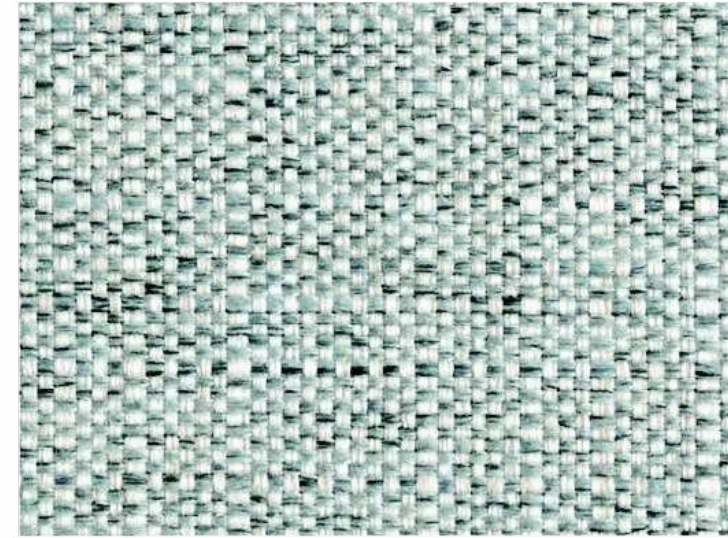
USCG -
EU MRA
0038

FABRIC TYPE	COMPOSITION	DURABILITY	LIGHTFASTNESS	PILLING	FIRE TESTS
Bouclé	76% Recycled Polyester FR 24% Polyester FR	60,000 Martindale	6	4	EN 1021/1-2, Pass; BS 5852, Crib 5; NF P 92/503-507 or NF D 60-013, M1 DIN 4102, B1 Cal TB 117-2013, section 1, Pass; IMO 2010 FTP part 8, Pass; NFPA 260, Class 1

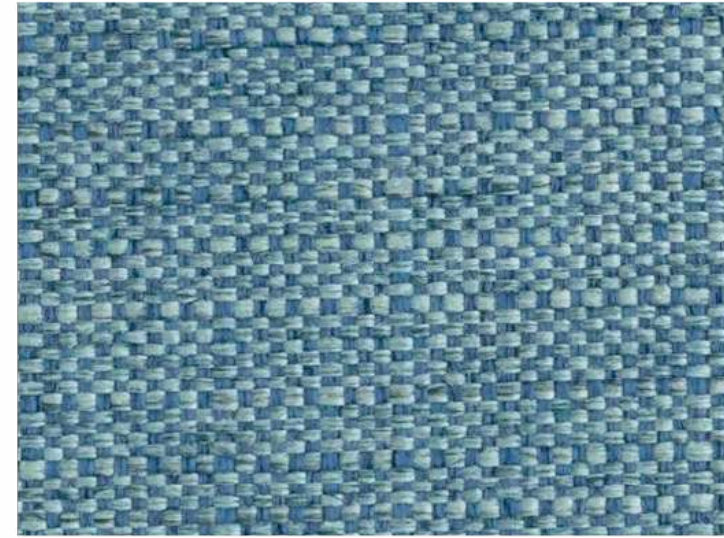
Caution: the displayed colours, due to technical matters, are approximate and may differ from the original



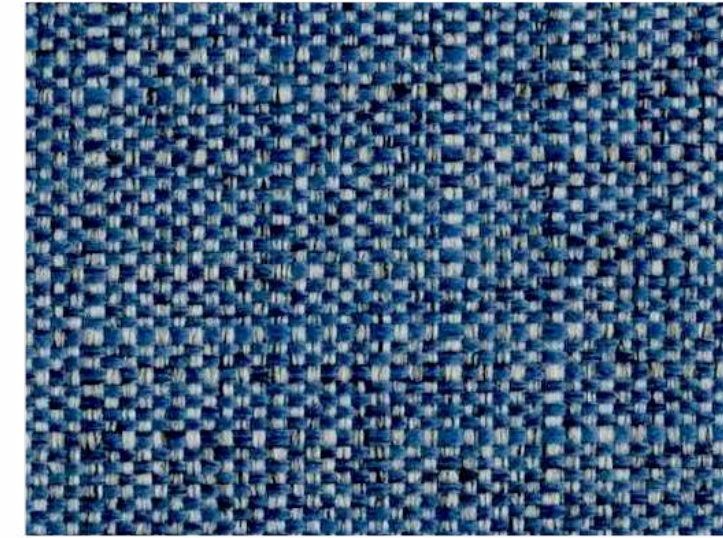
Water Green



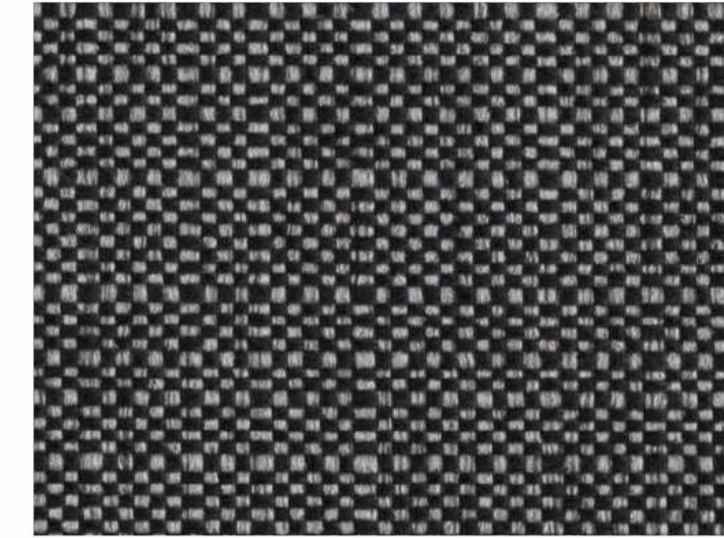
Safura



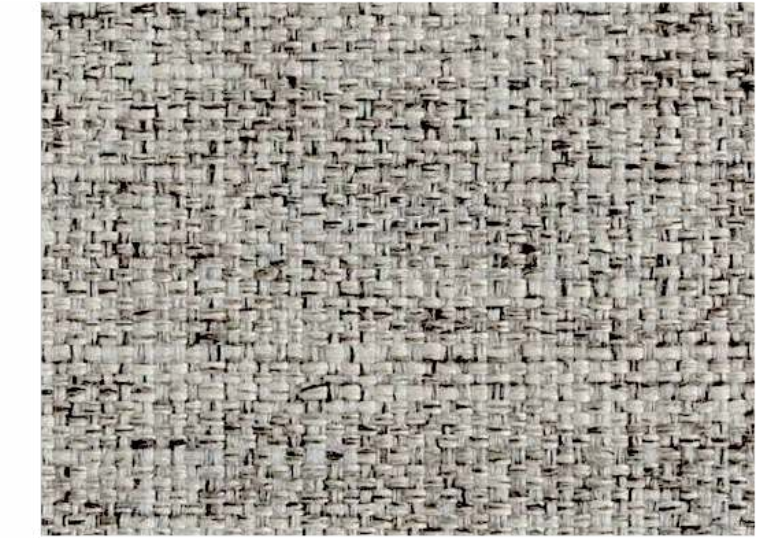
Sky



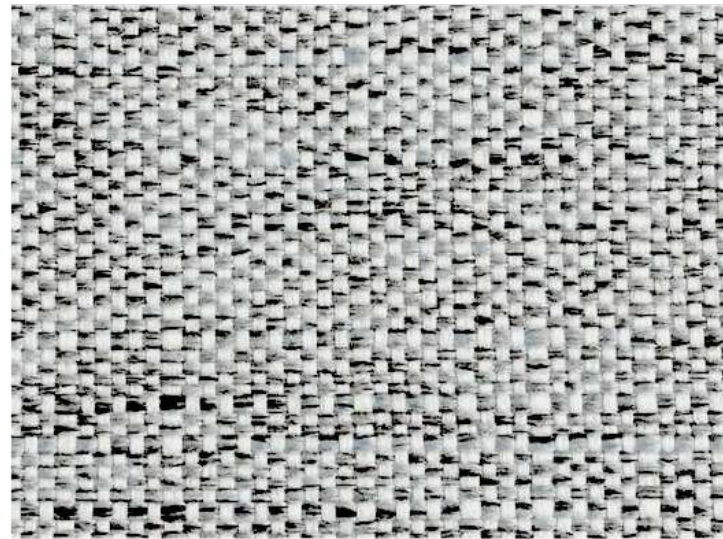
Blue



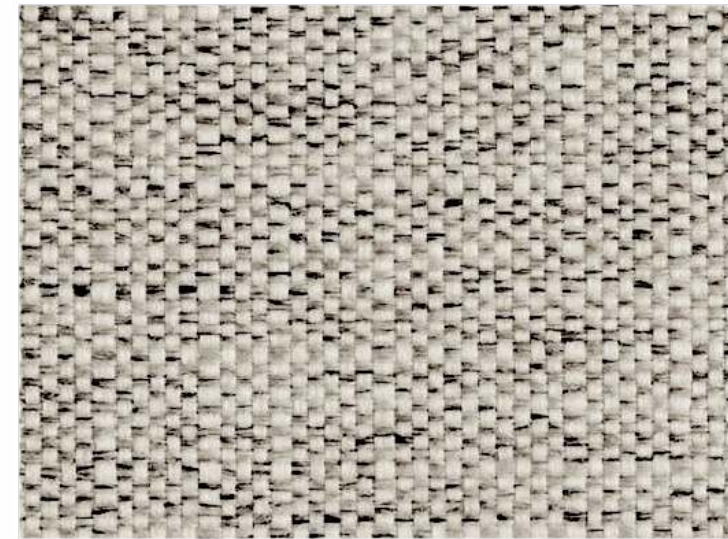
Black



Ash



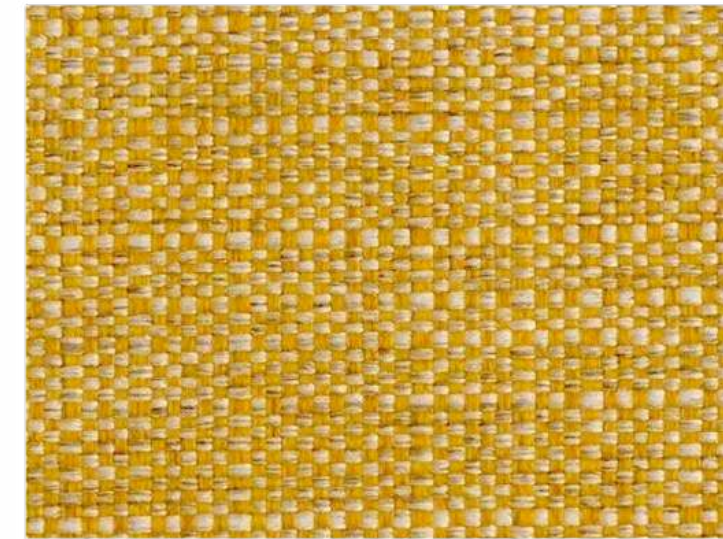
Light Grey



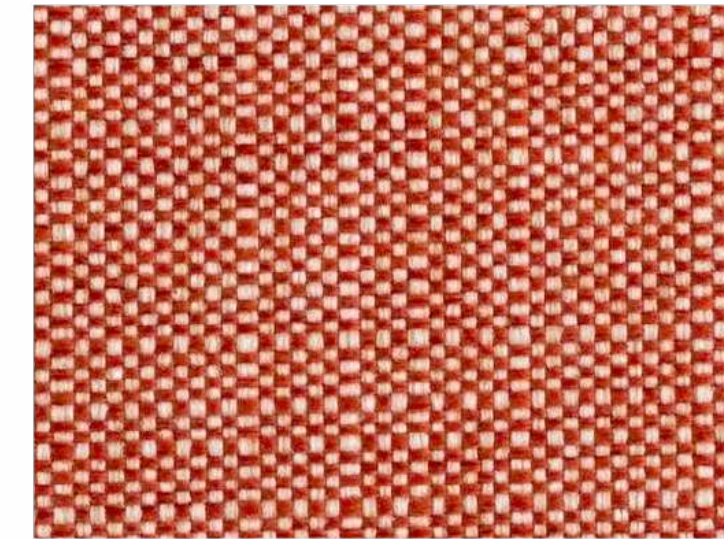
Silver



White



Yellow



Red



Salmon



Sand



Beige



Mouse



Taupe



Terra



Chocolate

BABEL

FABRIC TYPE	COMPOSITION	DURABILITY	LIGHTFASTNESS	PILLING	FEATURES	FIRE TESTS
Flat Weave	100% Polyester	90,000 Martindale	4	3 - 5	Easy-to-Clean Breathable Pet Friendly	BS 5852 part 1 - Cigarette Test PASS EN 1021-1 - Cigarette Test PASS CA Tech. Bull. 117:2013 / NFPA 260 - Cigarette Test PASS



BLUEWORLD
HUMAN CARE TECHNOLOGY



STANDARD 100
9342CIT
CITEVE

Caution: the displayed colours, due to technical matters, are approximate and may differ from the original



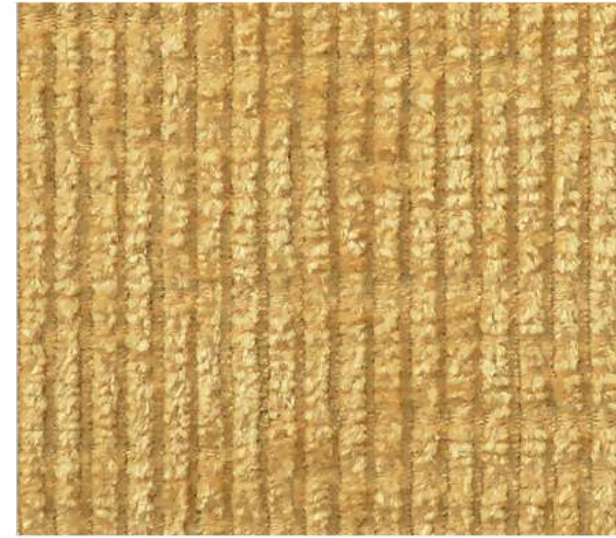
White



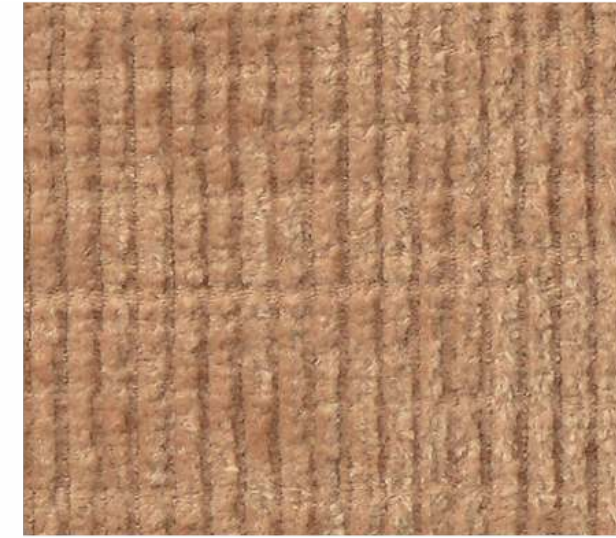
Pearl



Toffee



Mostaza



Sienna



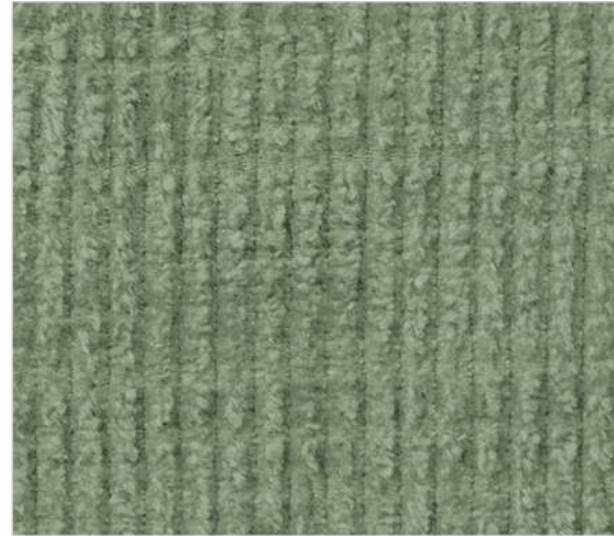
Copper



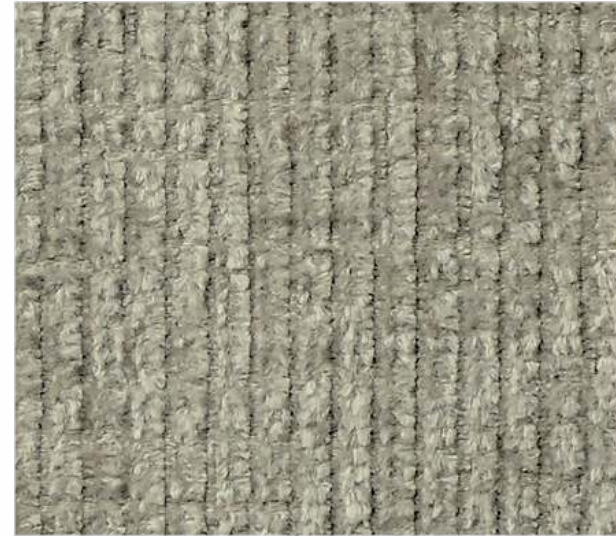
Red



Safira



Forest



Taupe



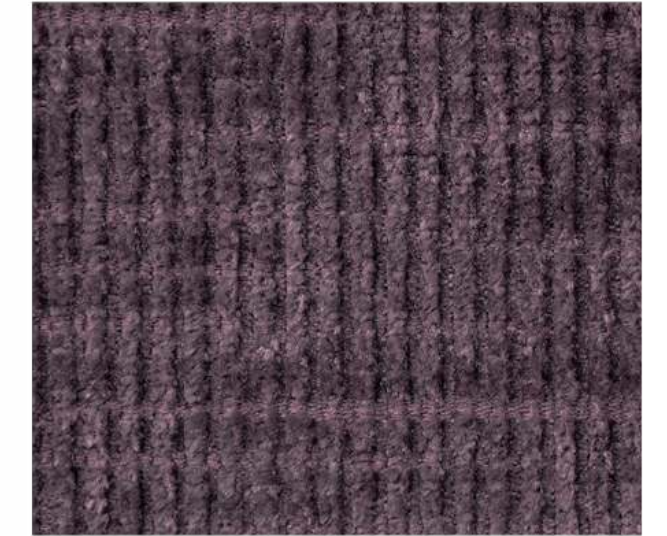
Sky



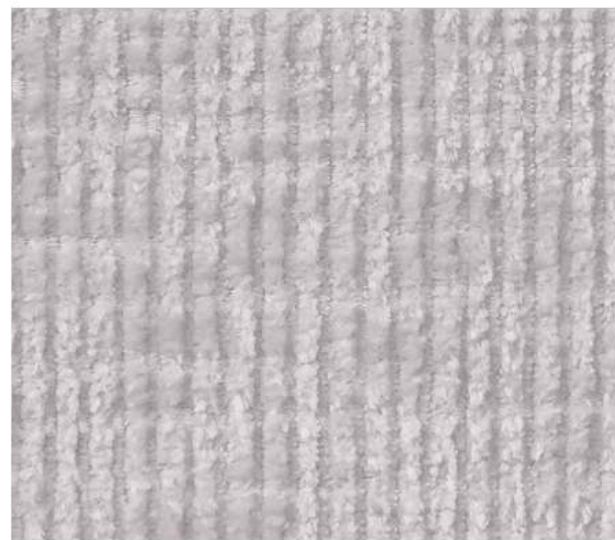
Ocean



Deep Blue



Deep Purple



Lavanda



Rose



Cement



Truffle



Ash



Black

BALTIC

FABRIC TYPE	COMPOSITION	DURABILITY	LIGHTFASTNESS	PILLING	FEATURES	FIRE TESTS
Chenille	100% Polyester	35,000 Martindale	5	4	Anti-Stain	BS 5852 part 1 - Cigarette Test PASS EN 1021-1 - Cigarette Test PASS CA Tech. Bull. 117:2013 / NFPA 260 - Cigarette Test PASS



BLUEWORLD[®]
HUMAN CARE TECHNOLOGY



STANDARD
100
9342CIT
CITEVE

Caution: the displayed colours, due to technical matters, are approximate and may differ from the original



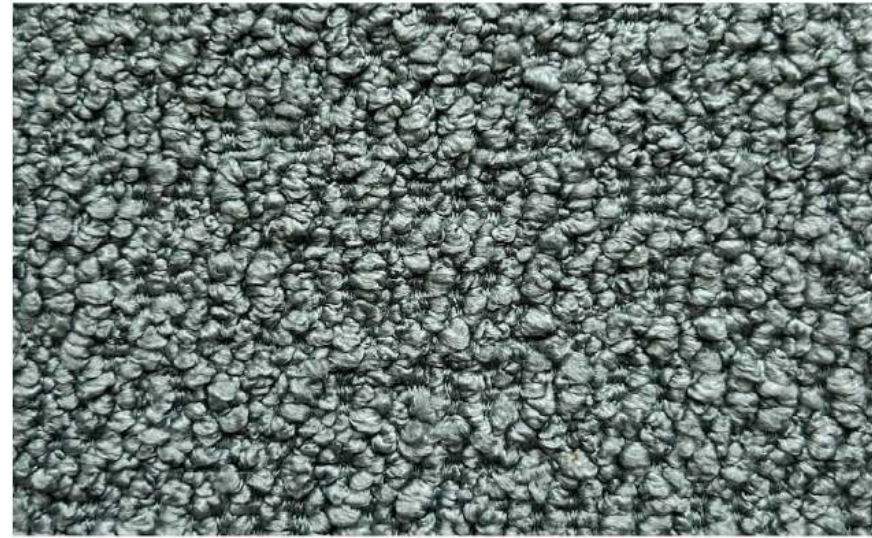
White

Sand

Pale Rose

Paprika

Cinnamon



Aqua

Pine

Hunter

Dark Forest

Fossil



Pebble

Dove

Stone

Shadow

Charcoal

BOUCLÉ

FABRIC TYPE

Bouclé

COMPOSITION

100% Polyester

DURABILITY

80,000 Martindale

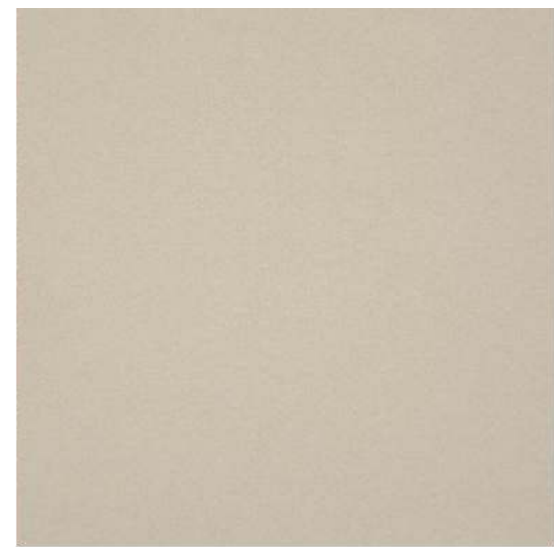
LIGHTFASTNESS

3

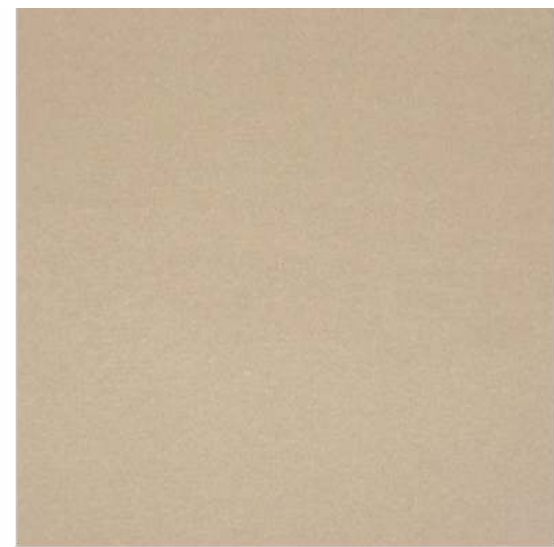
PILLING

4

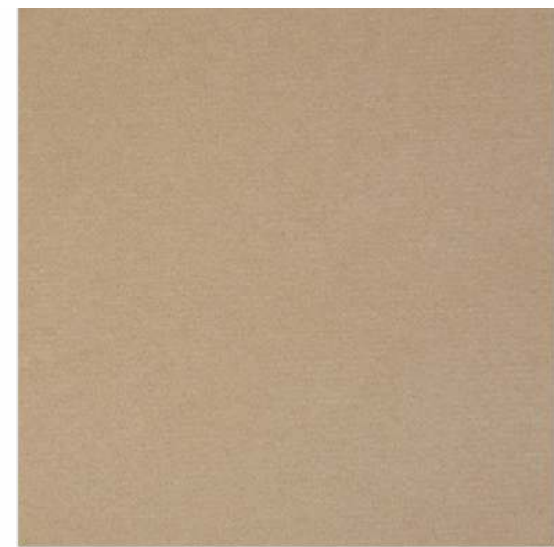
Caution: the displayed colours, due to technical matters, are approximate and may differ from the original



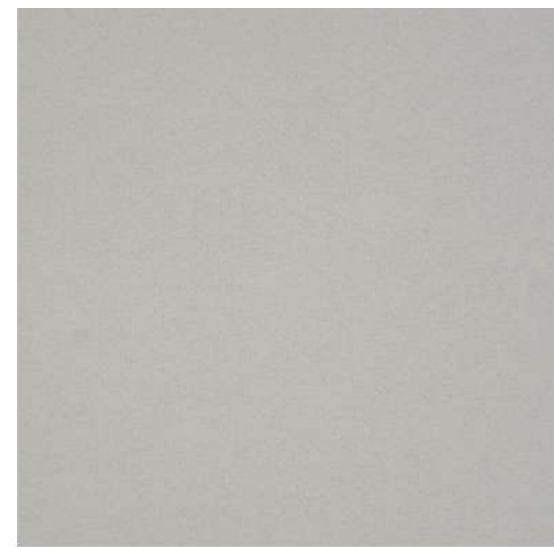
Pearl



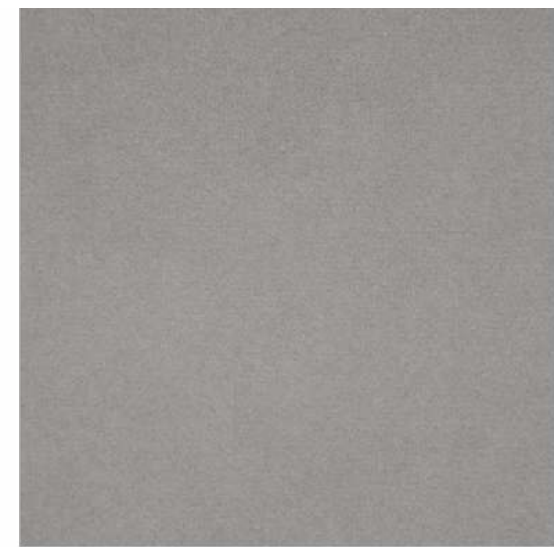
Beige



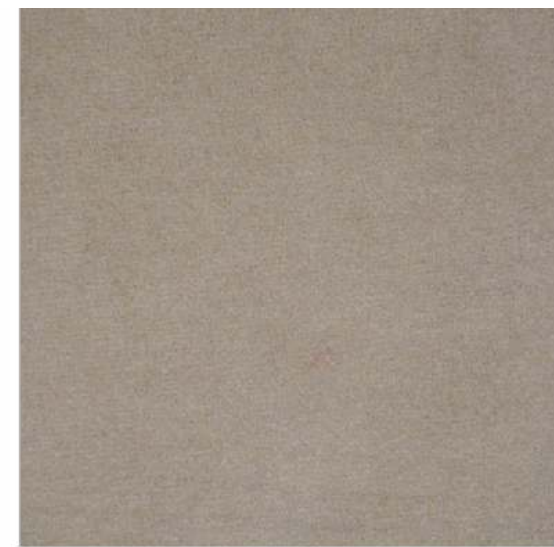
Lion



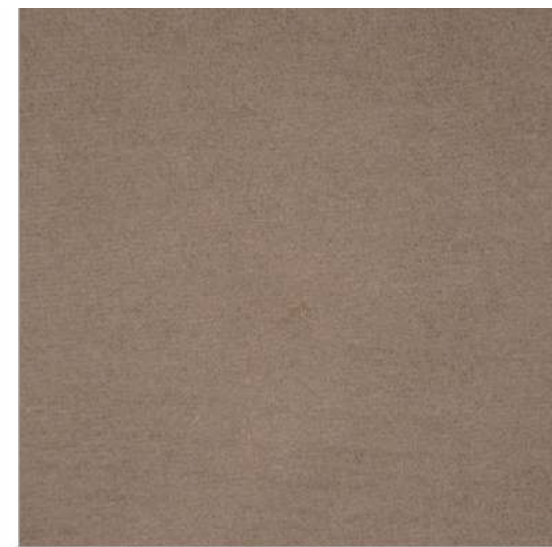
Fog



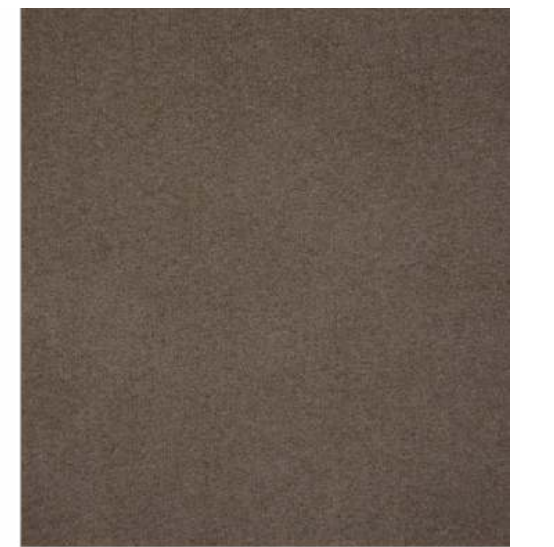
Stone



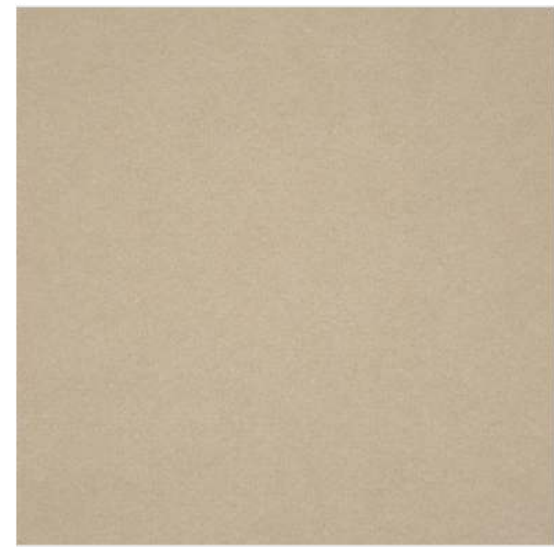
Elephant



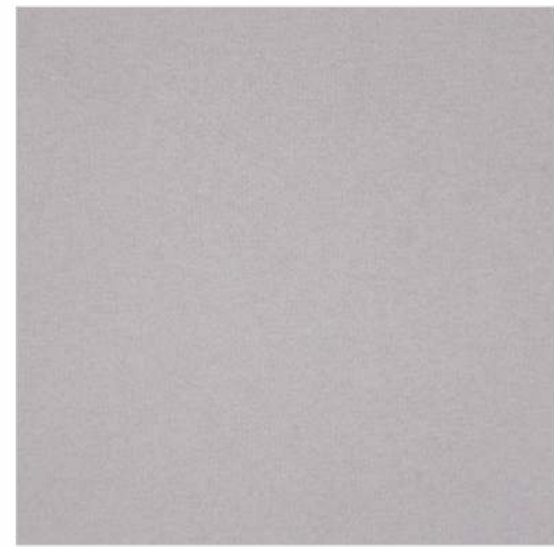
Taupe



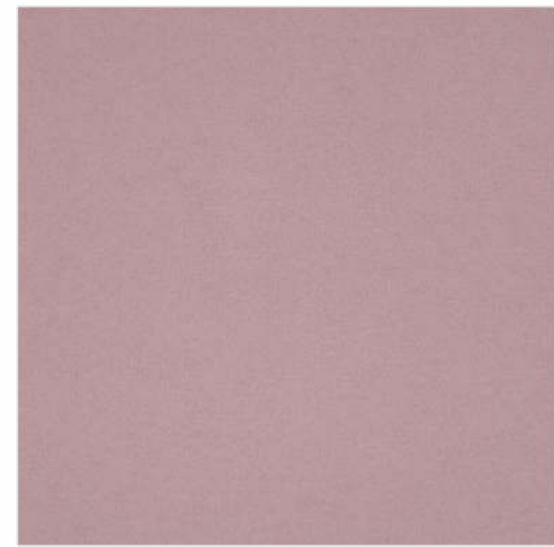
Ebony



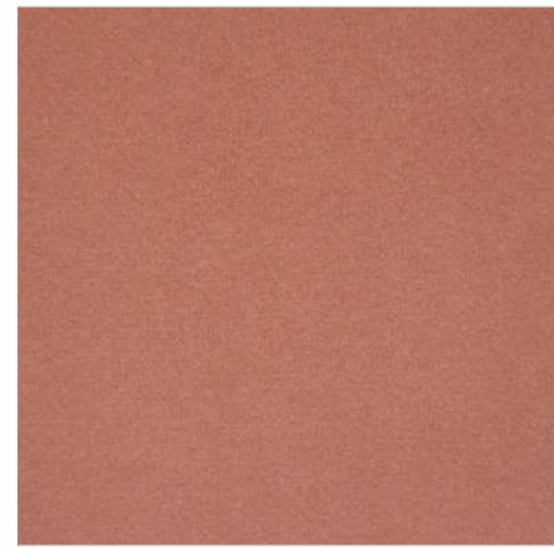
Sand



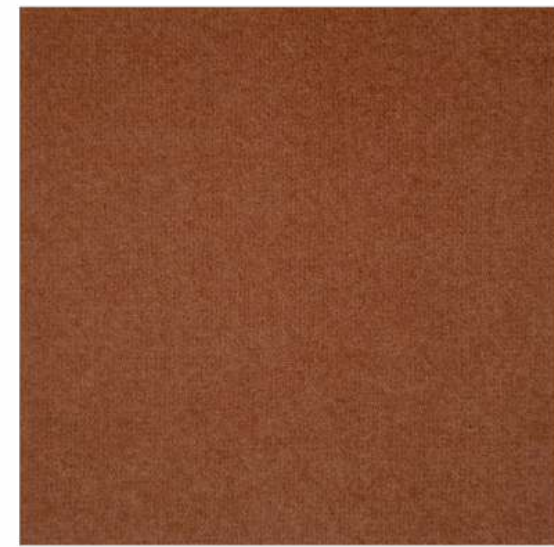
Light Violet



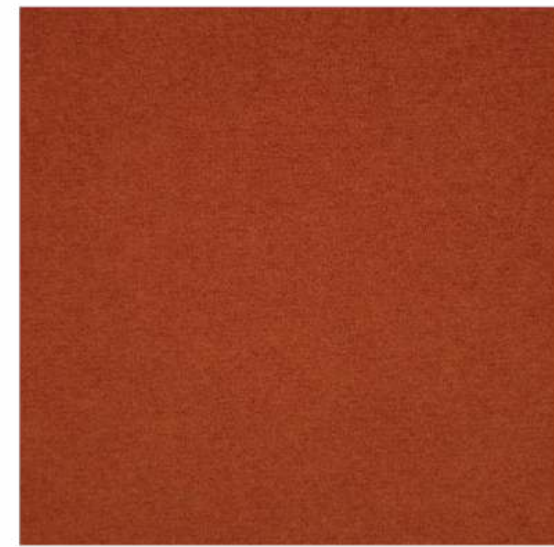
Pink



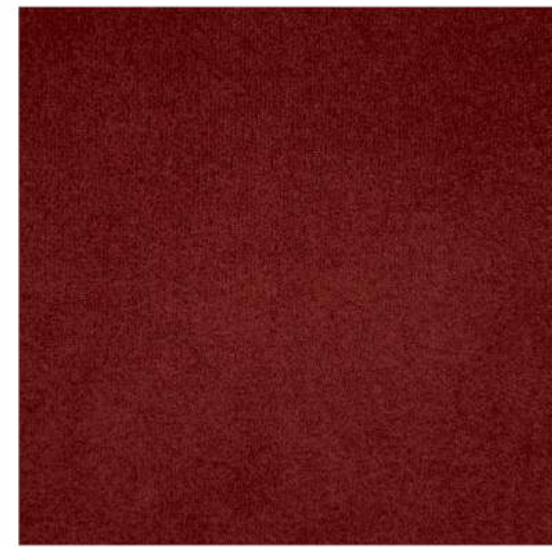
Salmon



Cuoio



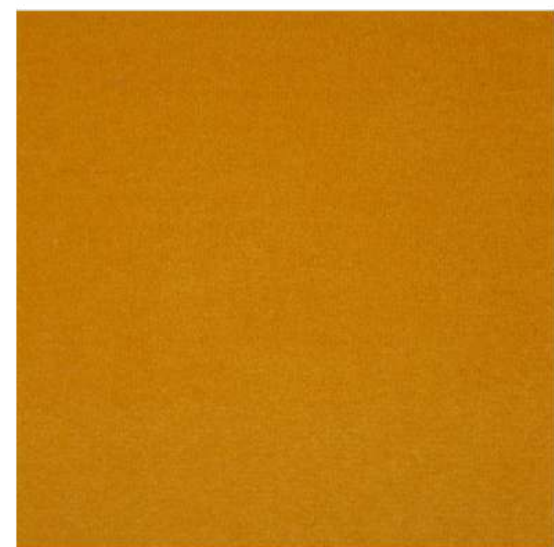
Terracotta



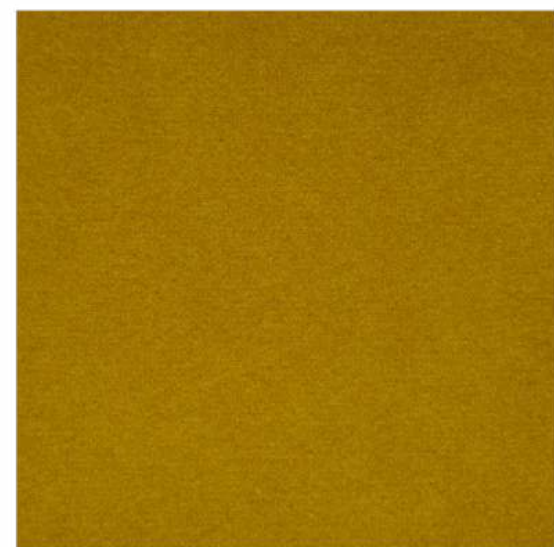
Marsala



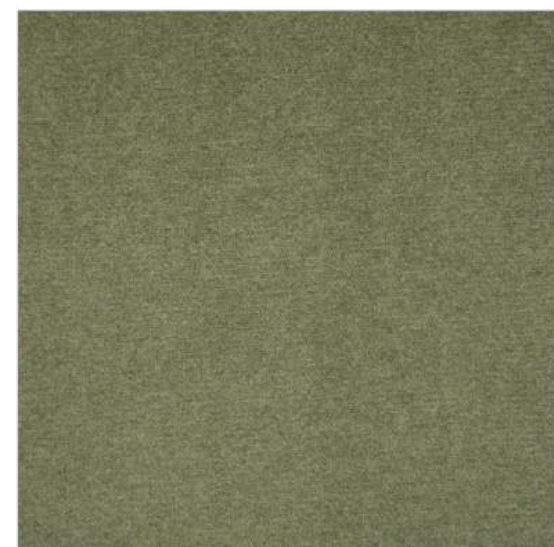
Bordeaux



Mostaza



Olive



Forest



Deep Green



Safira



Dark Blue



Ocean



Deep Blue

CASINO

FABRIC TYPE	COMPOSITION	DURABILITY	LIGHTFASTNESS	PILLING	FEATURES	FIRE TESTS
Velvet - Matte Finish	100% Polyester	100,000 Martindale	4 - 5	4 - 5	Anti-Stain Pet Friendly	BS 5852 part 1 - Cigarette Test PASS EN 1021-1 - Cigarette Test PASS CA Tech. Bull. 117:2013 / NFPA 260 - Cigarette Test PASS

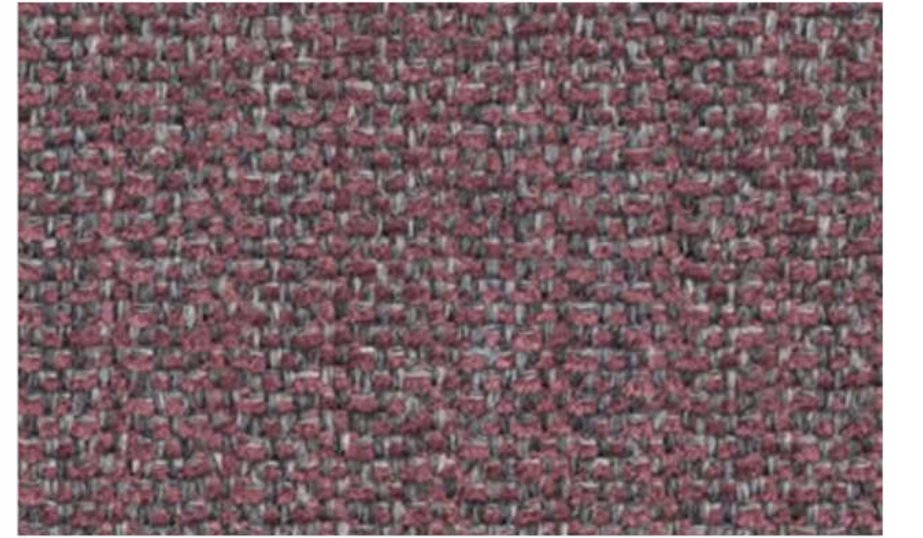
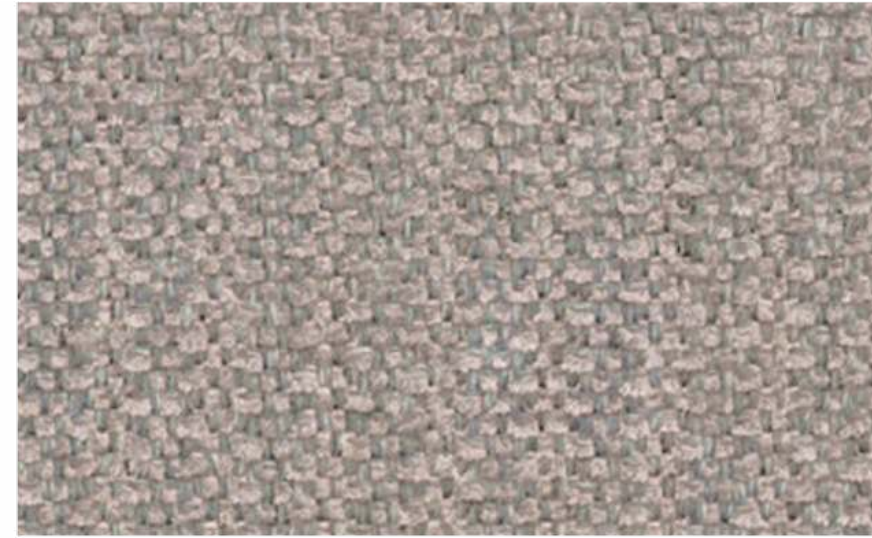
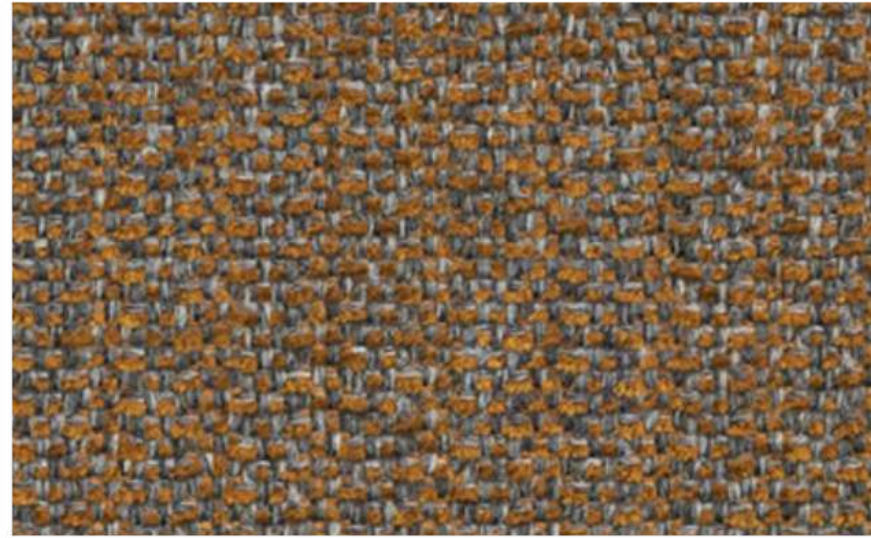
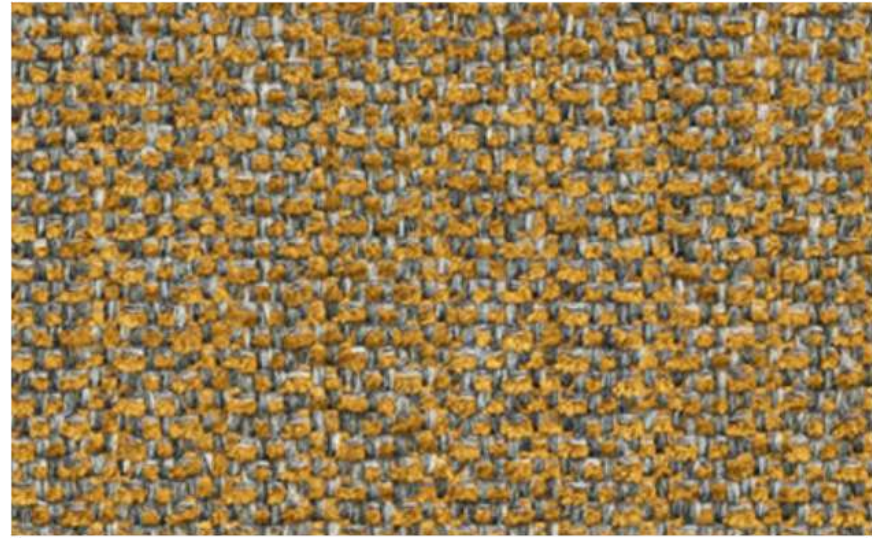


BLUEWORLD[®]
HUMAN CARE TECHNOLOGY



STANDARD
100
9342CIT
CITEVE

Caution: the displayed colours, due to technical matters, are approximate and may differ from the original



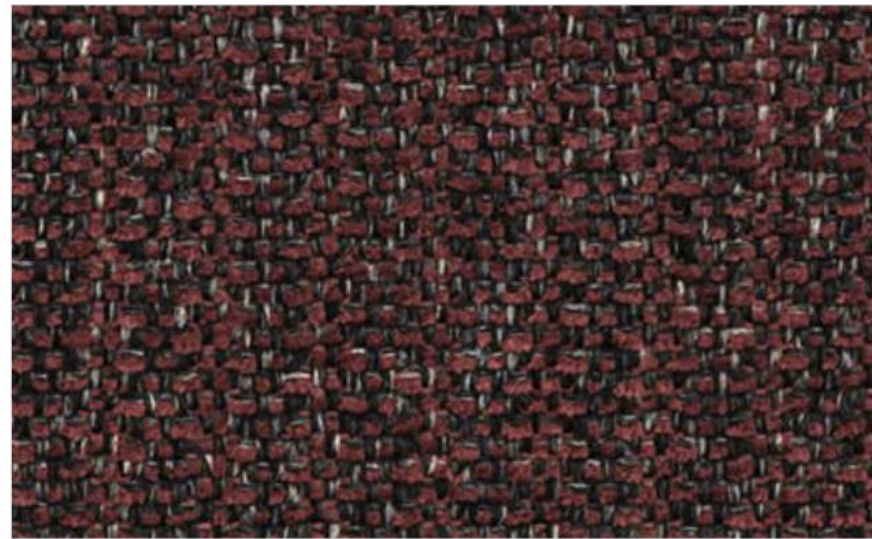
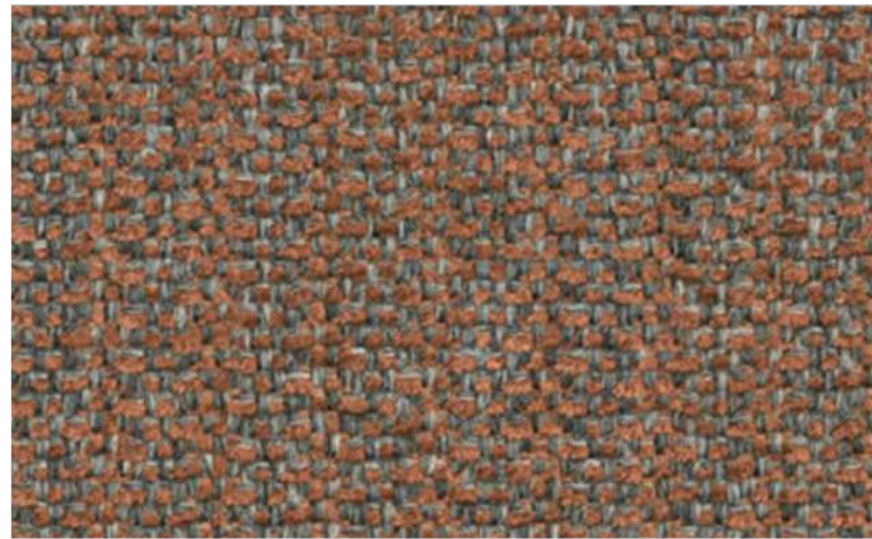
Fortress

Beacon

Redoubt

Drawbridge

Augusta



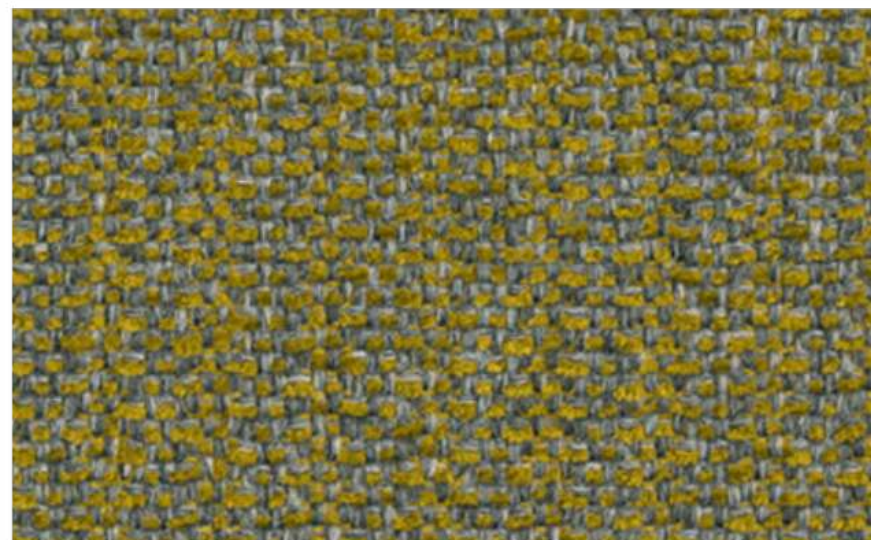
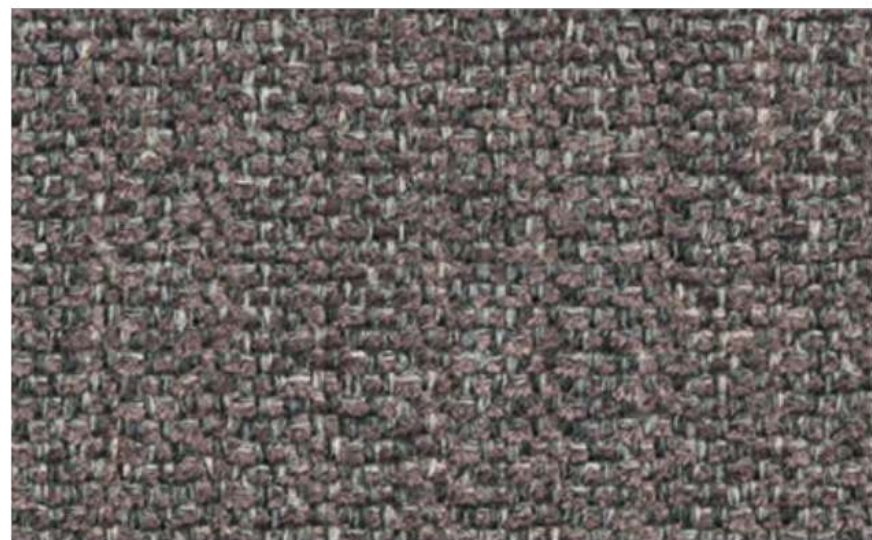
Hideaway

Hamilton

Resistance

Stillwater

Confine



Craven

Ralstone

Bingham

Abide

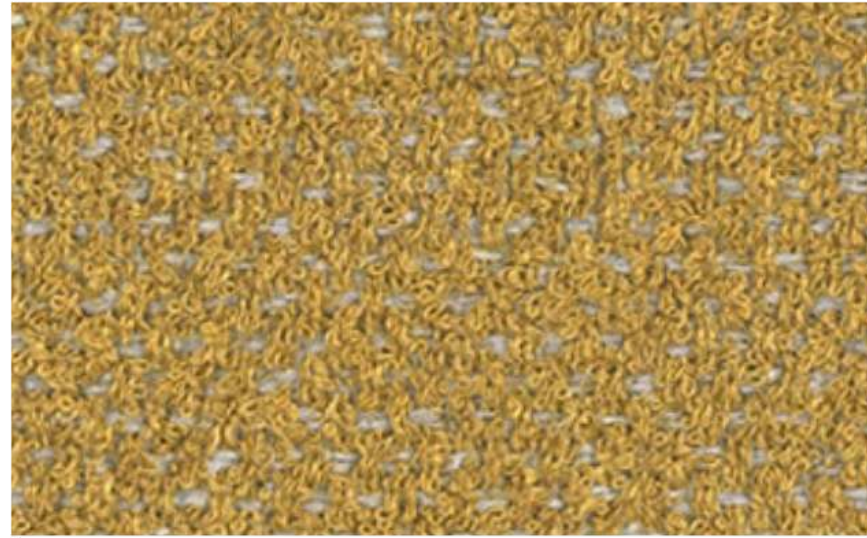
DIKSON

By Vescom

FABRIC TYPE	COMPOSITION	DURABILITY	LIGHTFASTNESS	PILLING	FIRE TESTS
Chenille	100% Polyester	100,000 Martindale	6	4 - 5	EN 1021/1-2, Pass; BS 5852, Crib 5; NF P 92/503-507 or NF D 60-013, M1 DIN 4102, B1 Cal TB 117-2013, section 1, Pass; IMO 2010 FTP part 8, Pass; NFPA 260, Class 1



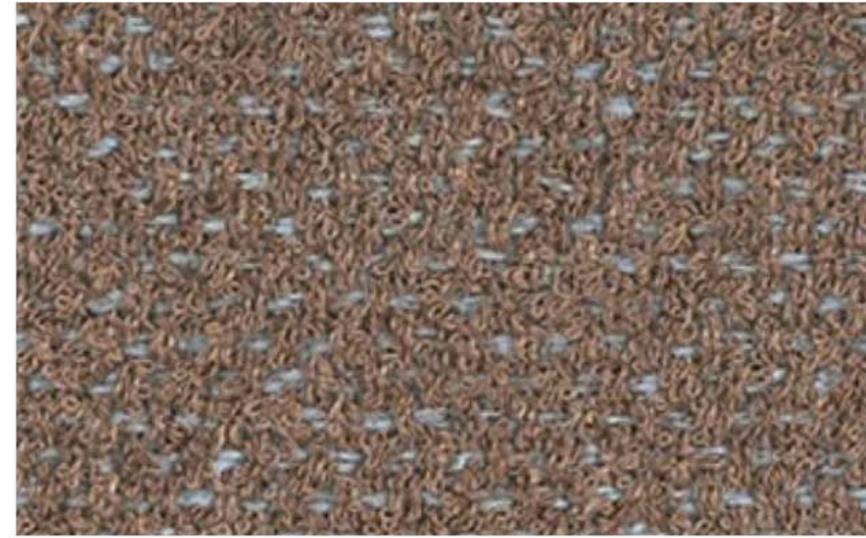
Caution: the displayed colours, due to technical matters, are approximate and may differ from the original



Capones



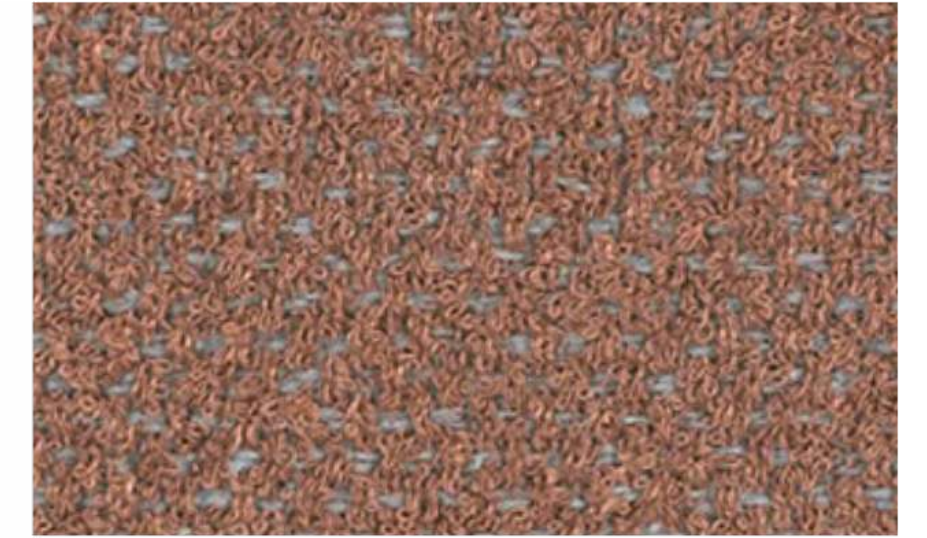
Palenque



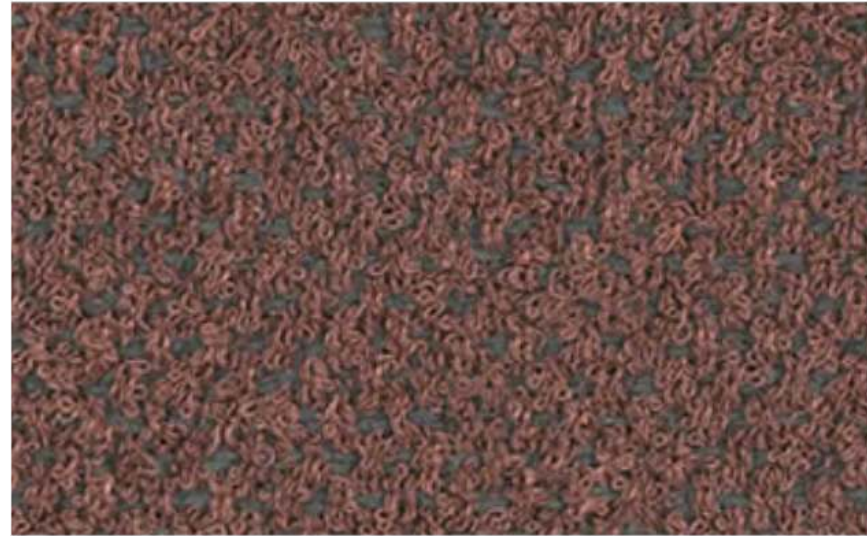
Gorkha



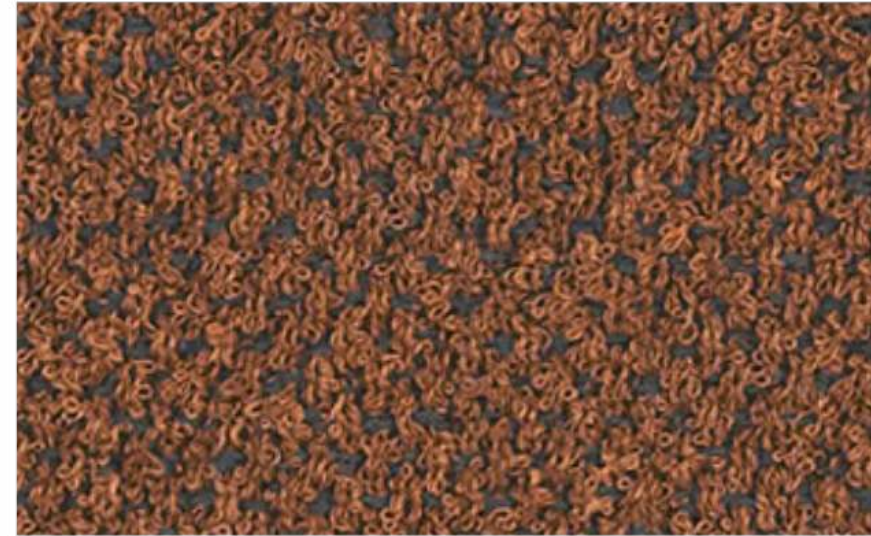
Petra



Meteora



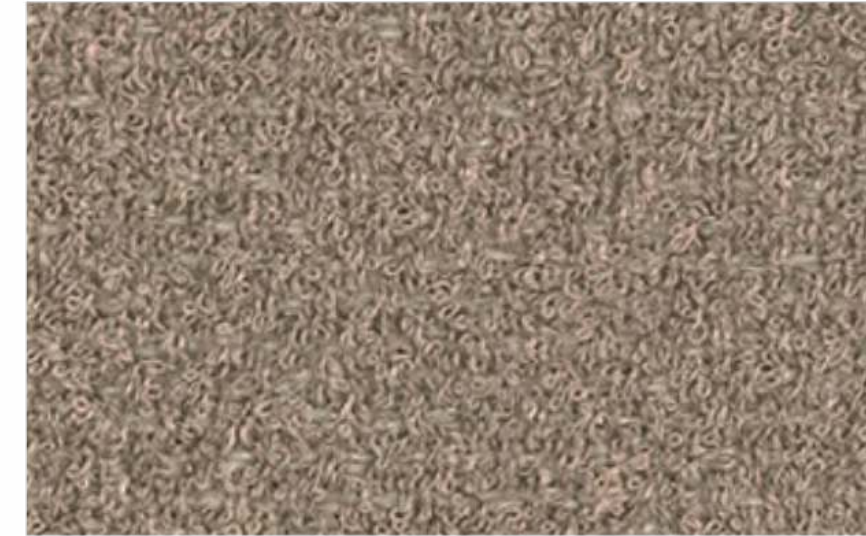
Zion



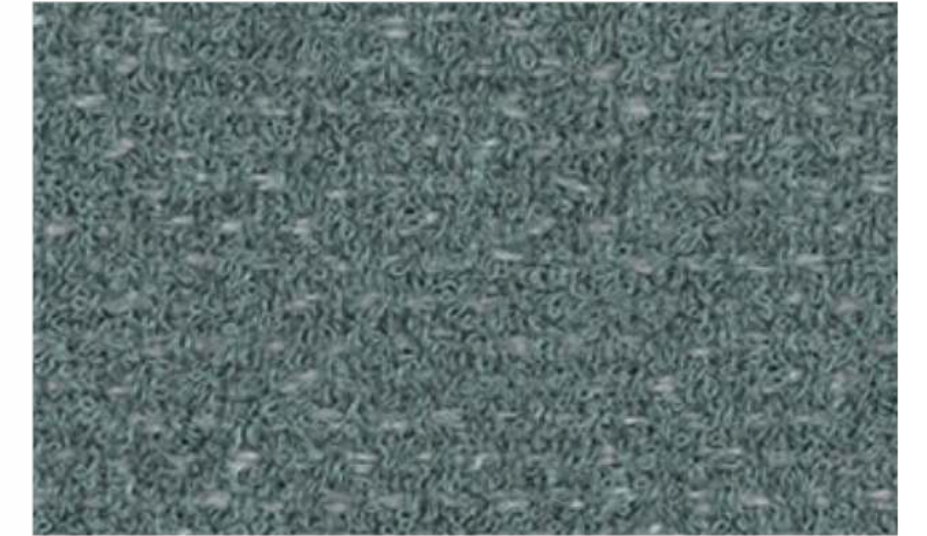
Marrakech



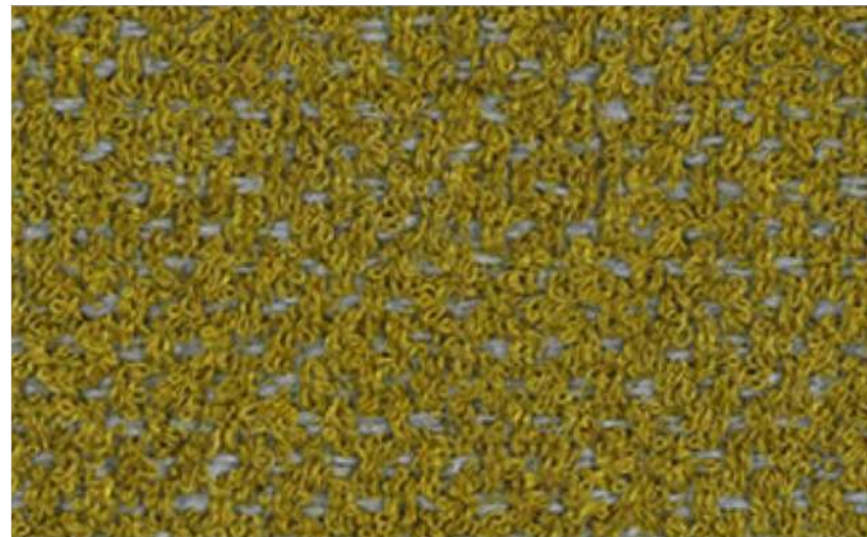
Dolomites



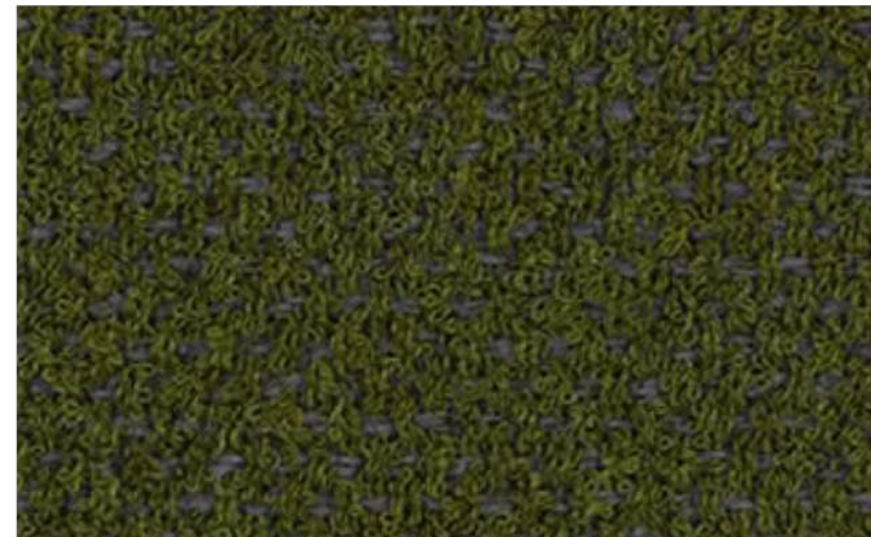
Halong



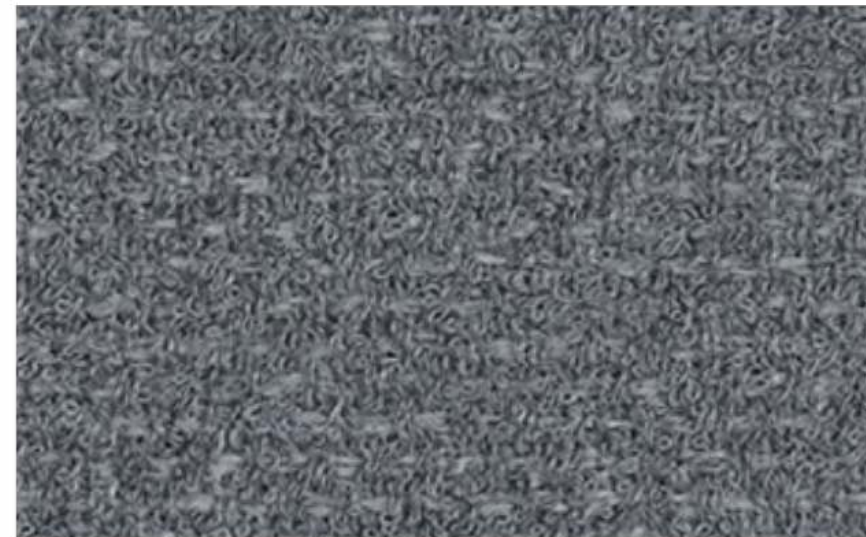
Molokai



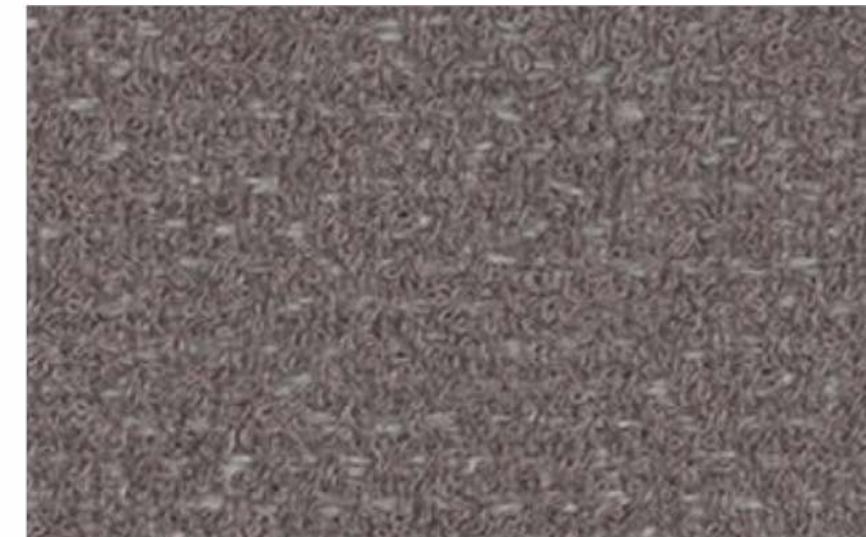
Yosemite



Patagonia



Rainer



Calabria



Malham

FOSTER

By Vescom

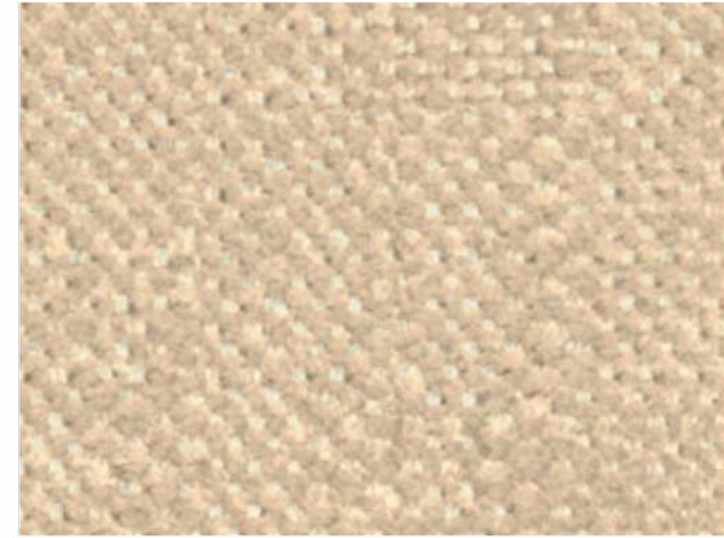
FABRIC TYPE	COMPOSITION	DURABILITY	LIGHTFASTNESS	PILLING	FIRE TESTS
Bouclé	97% Recycled Polyester FR 3% Polyester FR	60,000 Martindale	6	4	EN 1021/1-2, Pass; BS 5852, Crib 5; NF P 92/503-507 or NF D 60-013, M1 DIN 4102, B1 Cal TB 117-2013, section 1, Pass; IMO 2010 FTP part 8, Pass; NFPA 260, Class 1



Caution: the displayed colours, due to technical matters, are approximate and may differ from the original



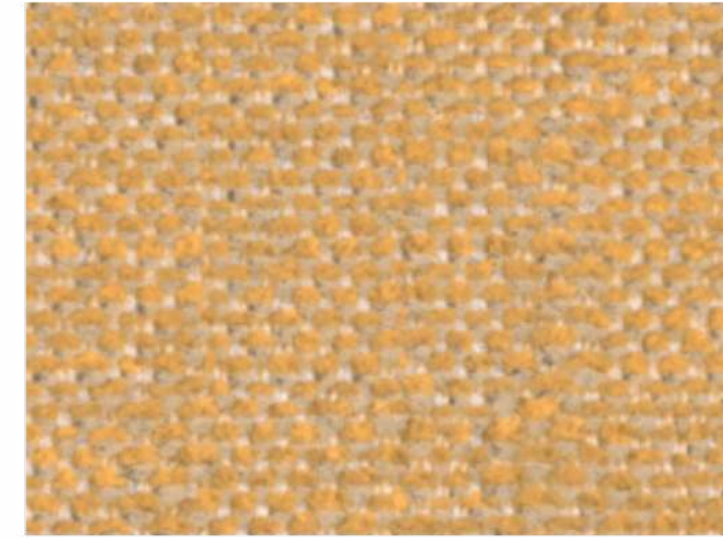
Vit



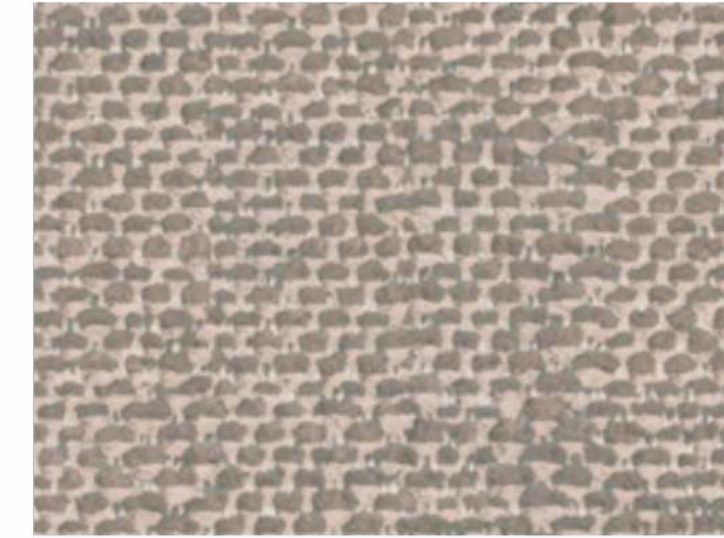
Clan



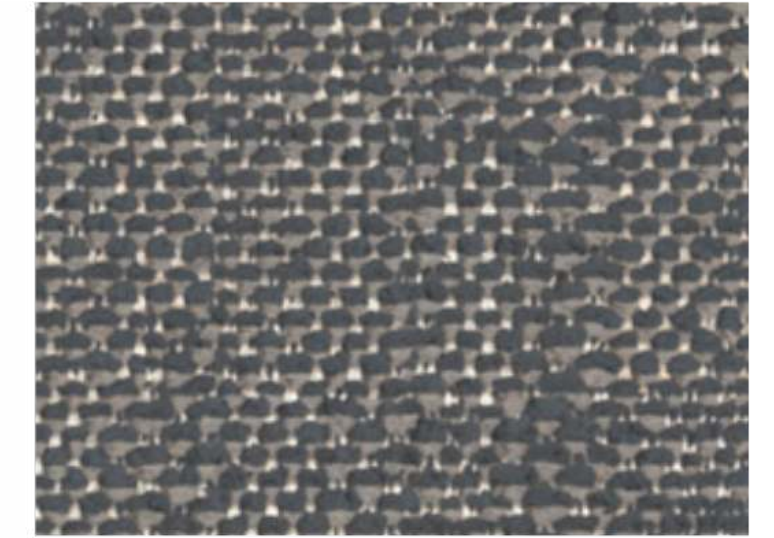
Shetland



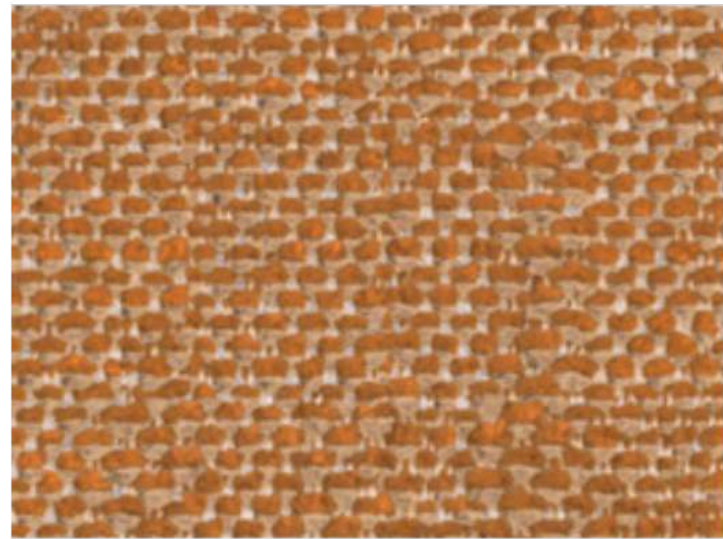
Lora



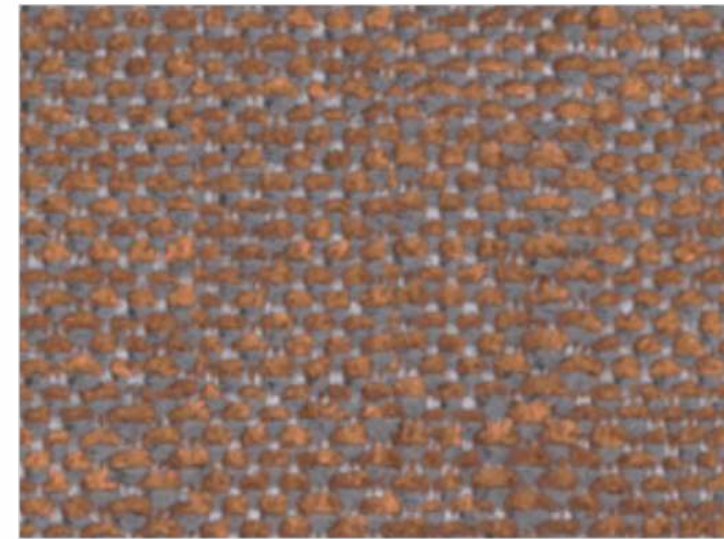
Hillswick



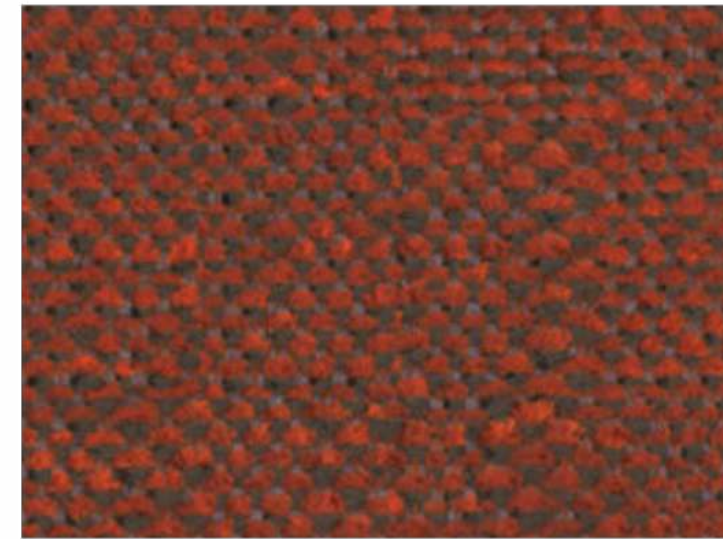
Dolphin



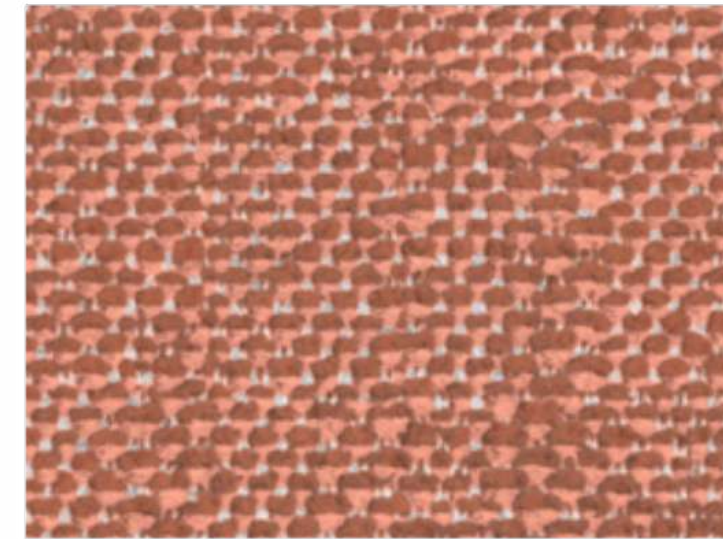
Lomond



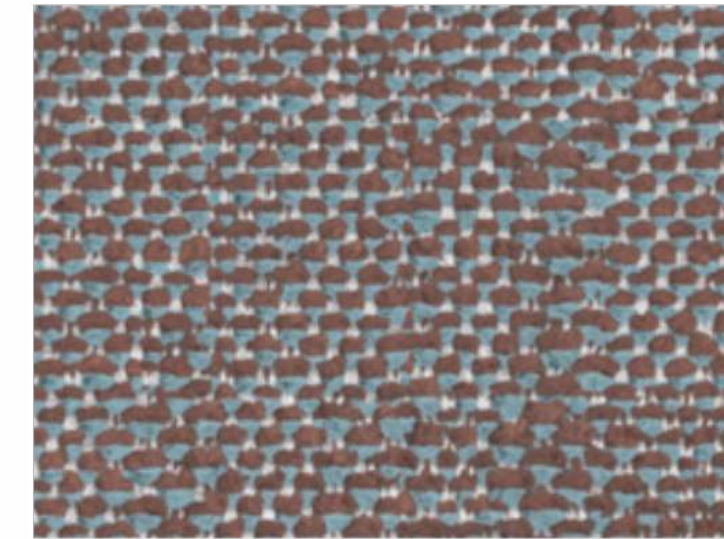
Austen



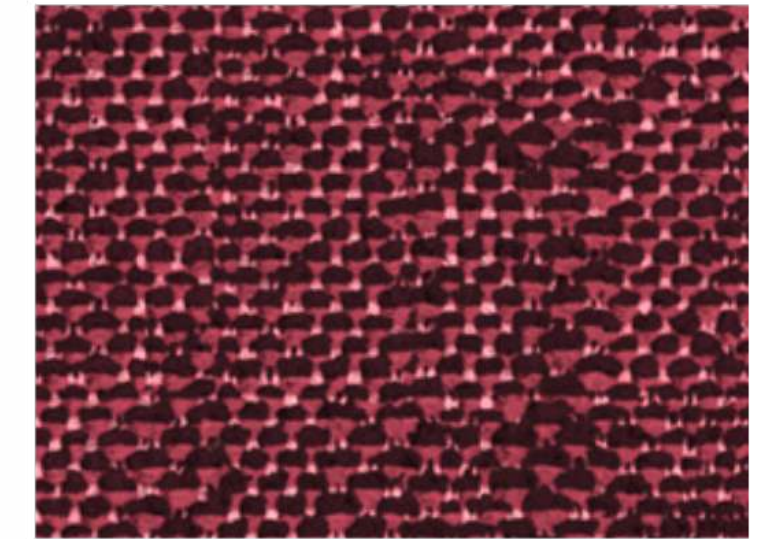
Pitlochry



Maree



Denny



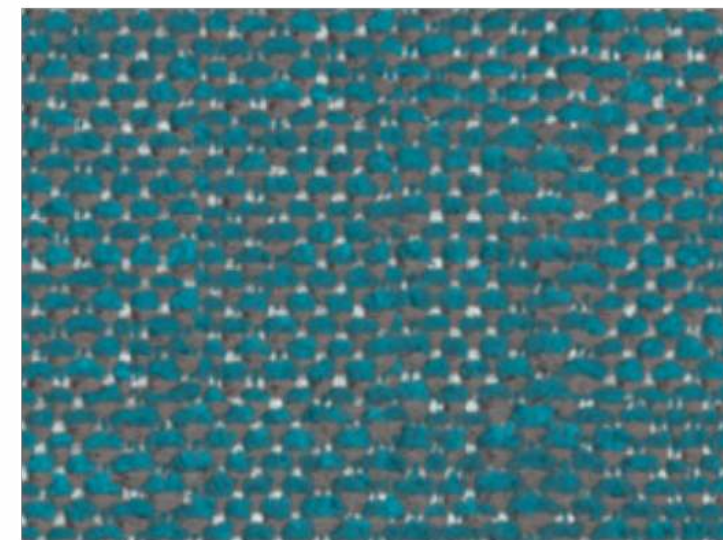
Tummel



Lossie



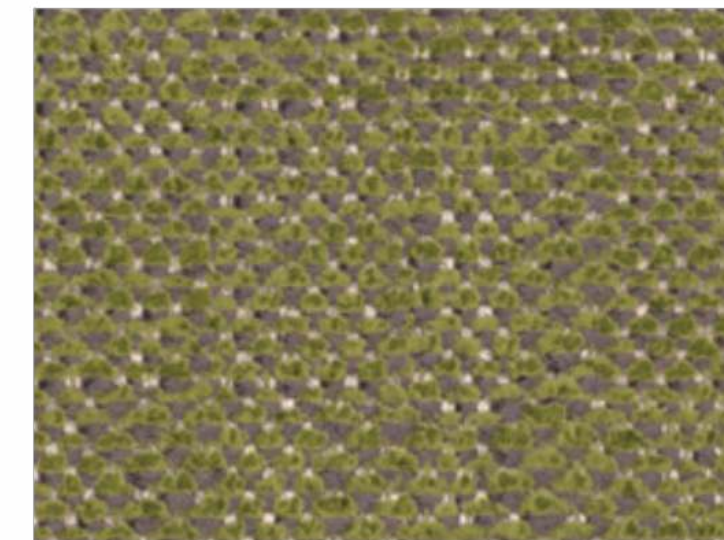
Adriatic



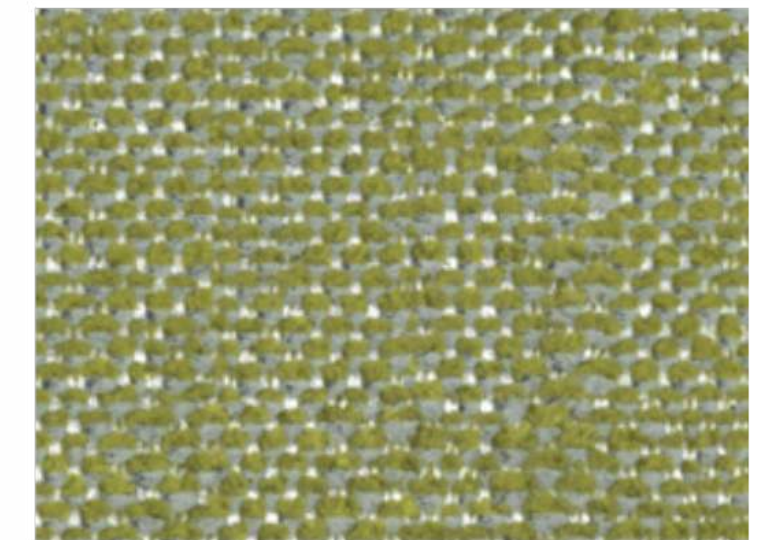
Inverness



Carron



Staffa



Fair Isle

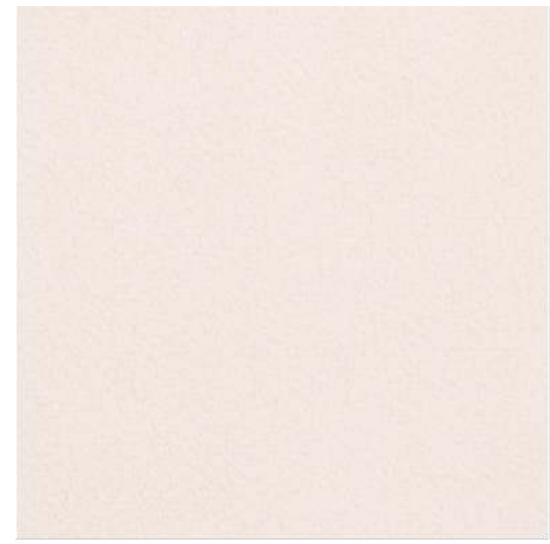
FUGA

By Vescom

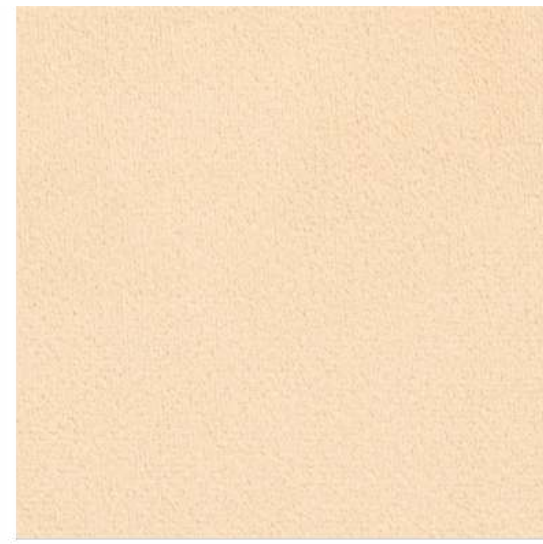
FABRIC TYPE	COMPOSITION	DURABILITY	LIGHTFASTNESS	PILLING	FIRE TESTS
Chenille	79% Recycled Polyester FR 21% Polyester FR	70,000 Martindale	6 - 7	4 - 5	EN 1021/1-2, Pass; BS 5852, Crib 5; NF P 92/503-507 or NF D 60-013, M1 DIN 4102, B1 Cal TB 117-2013, section 1, Pass; IMO 2010 FTP part 8, Pass; NFPA 260, Class 1



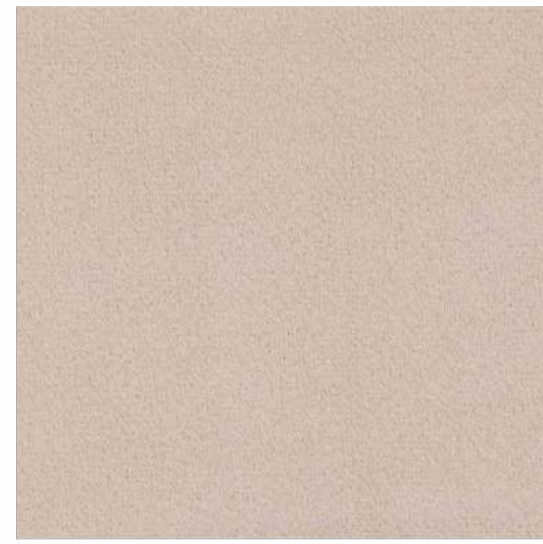
Caution: the displayed colours, due to technical matters, are approximate and may differ from the original



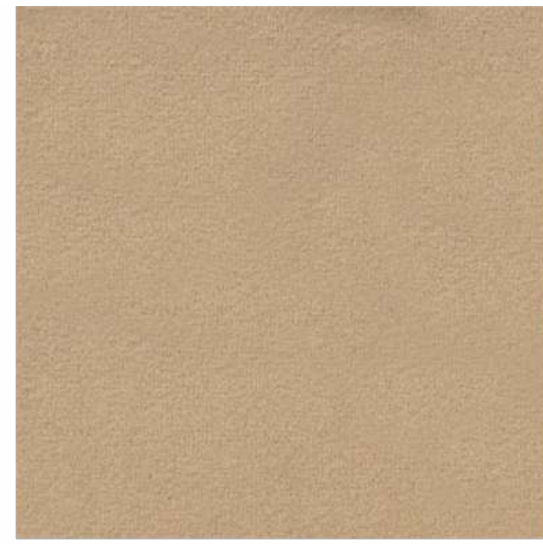
Milk



Cream



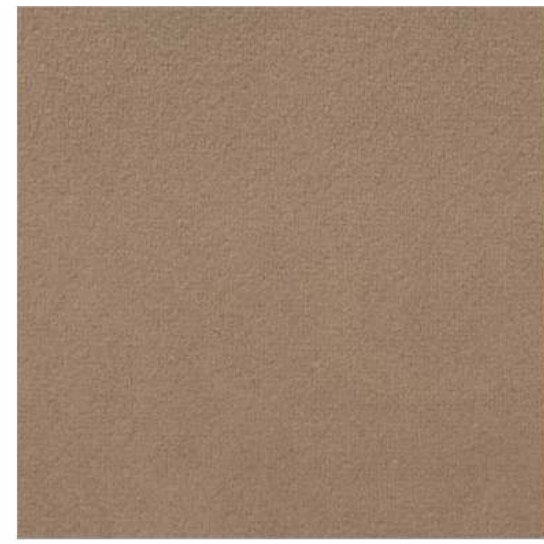
Warm Grey



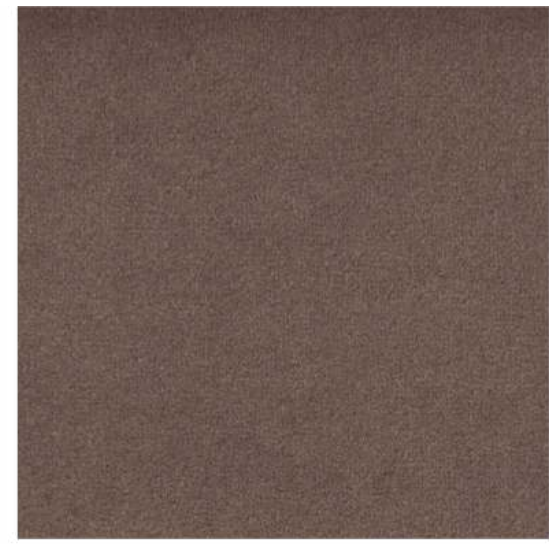
Sand



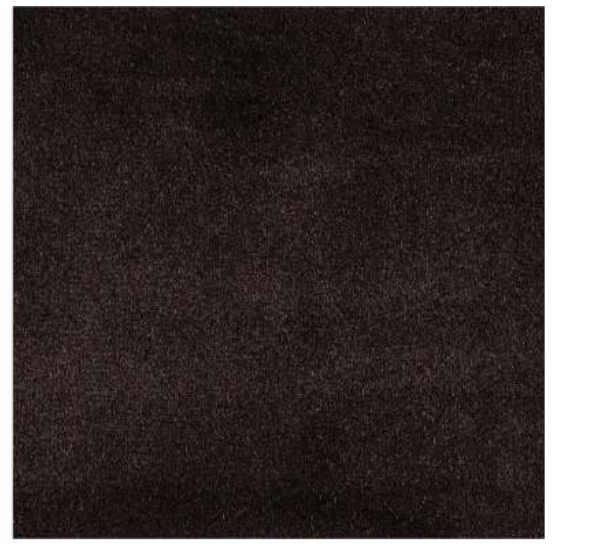
Camel



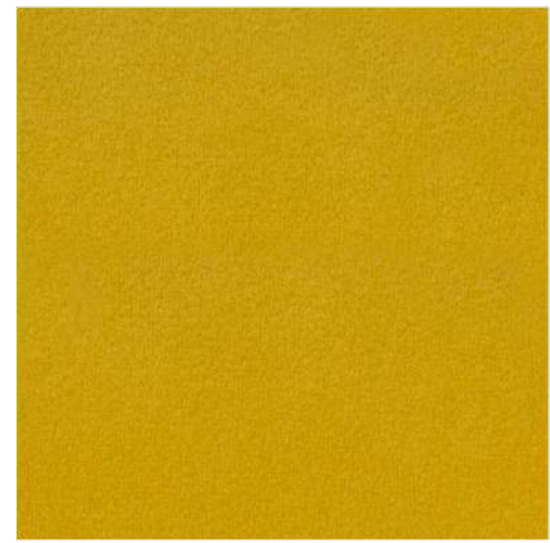
Taupe



Mink



Ebony



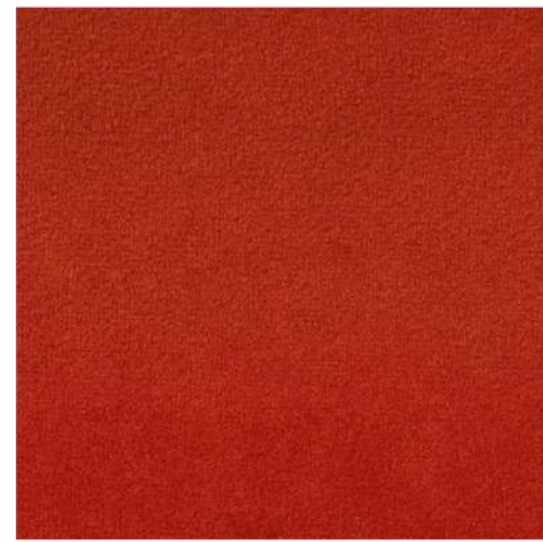
Mostaza



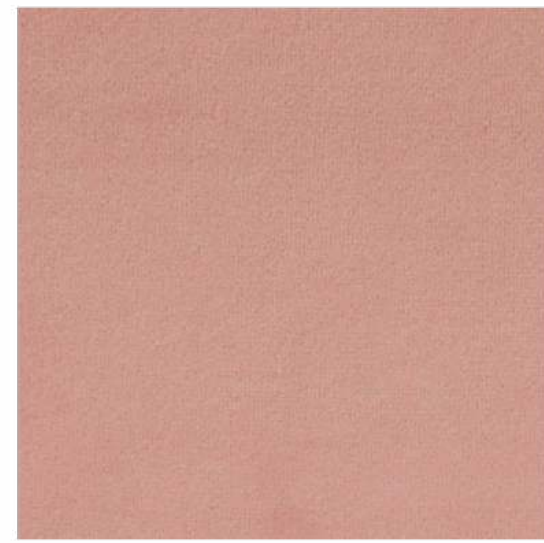
Masai



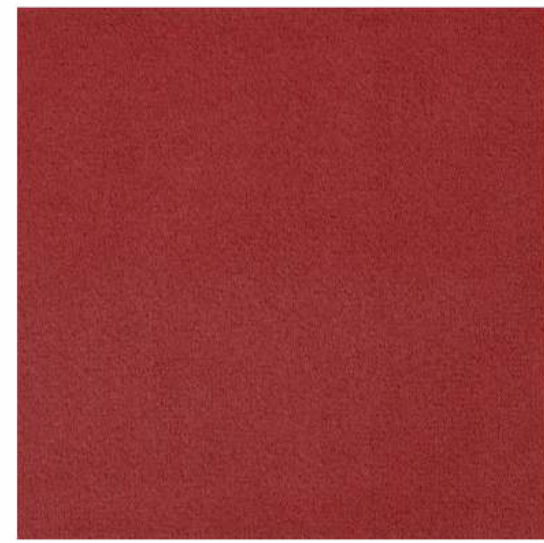
Copper



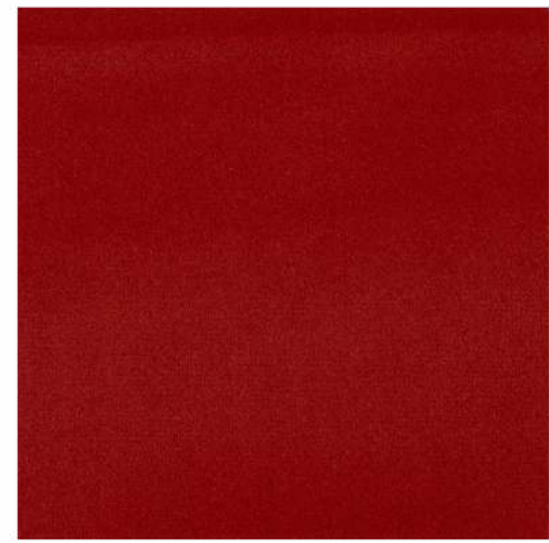
Rust



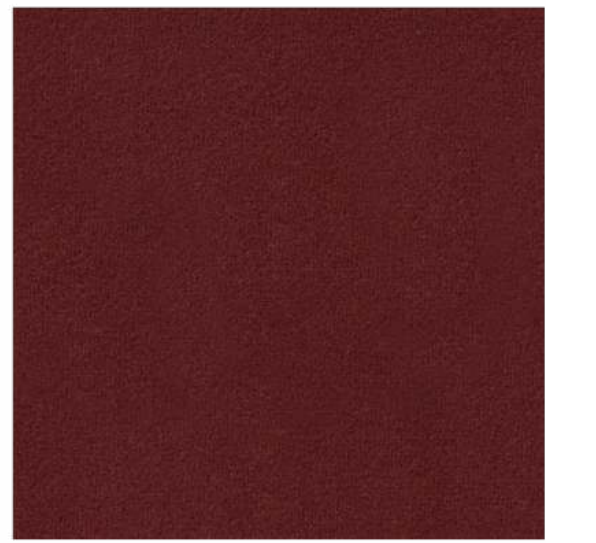
Mauve



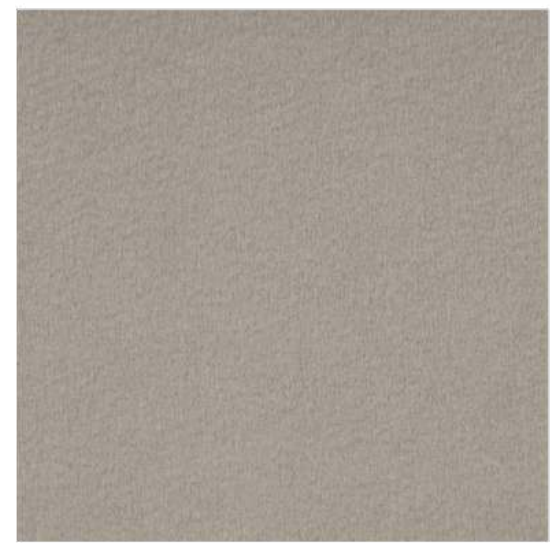
Marsala



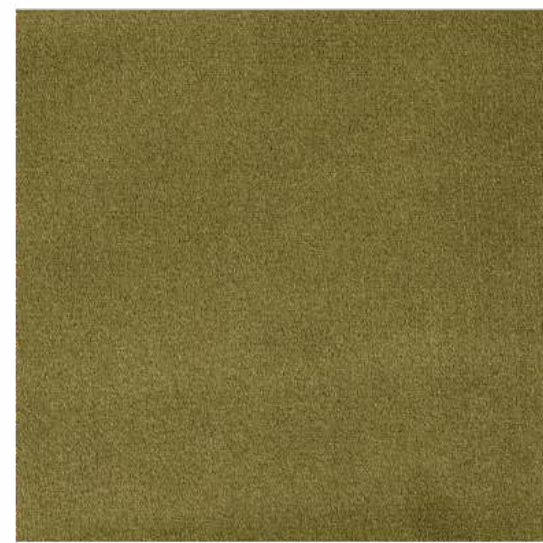
Red



Bourdeaux



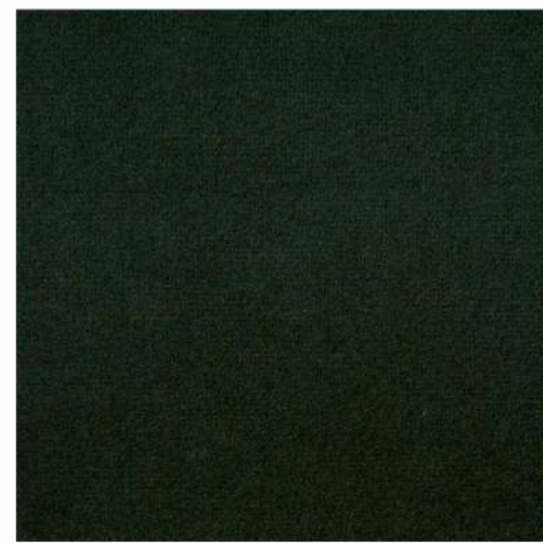
Cement



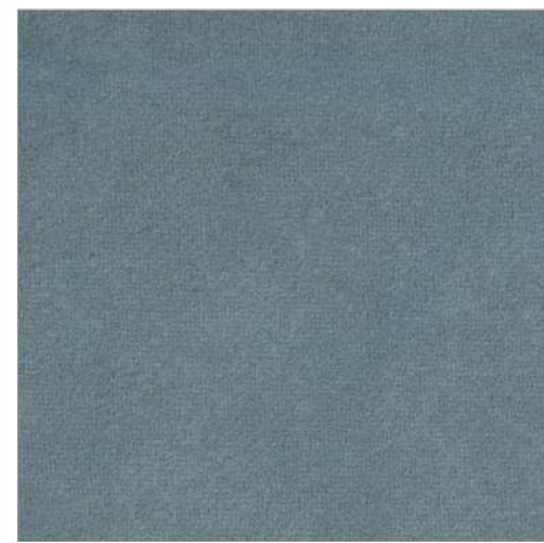
Olive



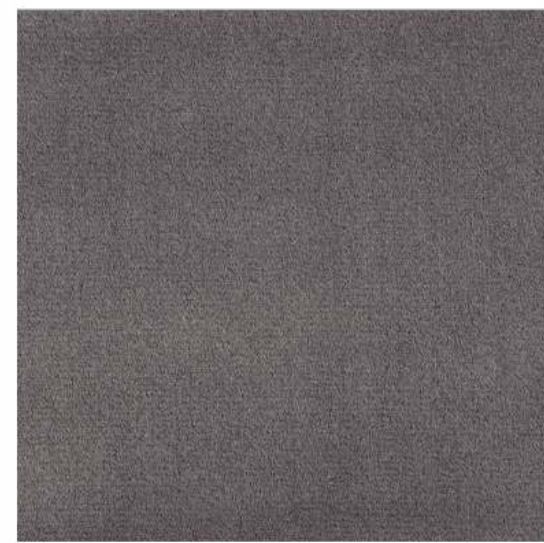
Forest



Emerald



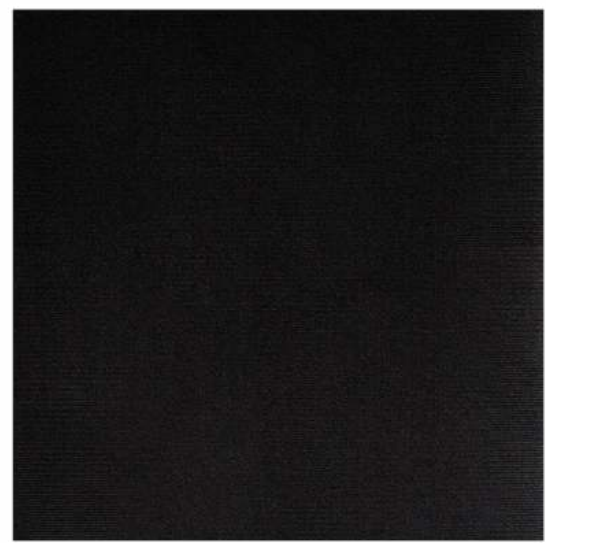
Steel Blue



Mid Grey



Navy

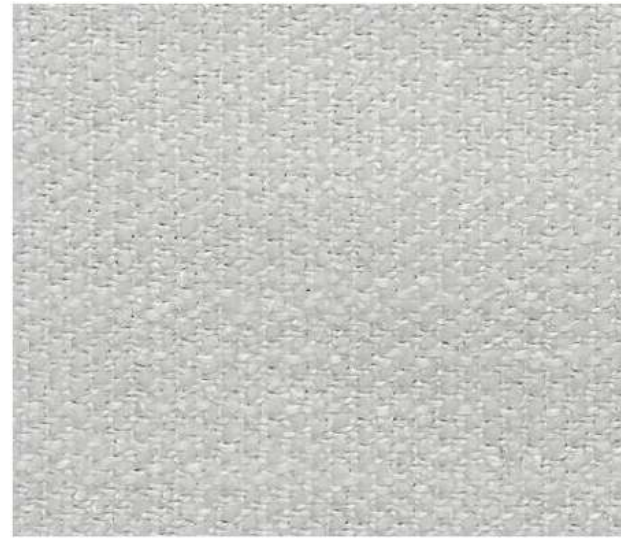


Black

HARALD

FABRIC TYPE	COMPOSITION	DURABILITY	LIGHTFASTNESS	PILLING	FEATURES	FIRE TESTS
Velvet - Soft Sheen	100% Cotton	50,000 Martindale	3	5	Liquid Repellent	BS 5852 part 1 - Cigarette Test PASS EN 1021-1 - Cigarette Test PASS CA Tech. Bull. 117:2013 / NFPA 260 - Cigarette Test PASS

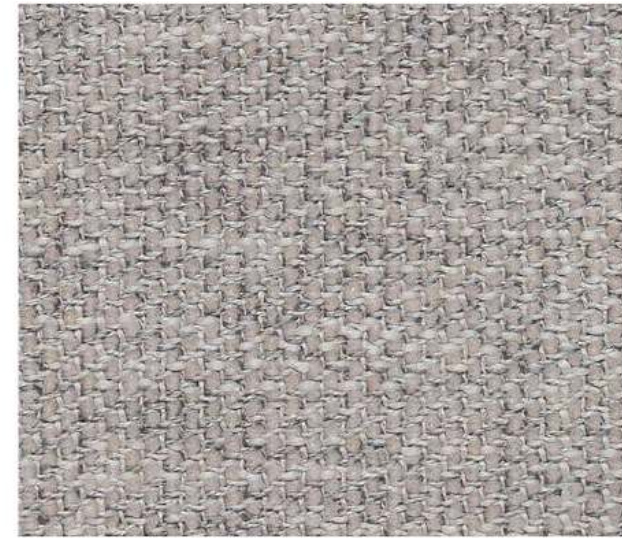
Caution: the displayed colours, due to technical matters, are approximate and may differ from the original



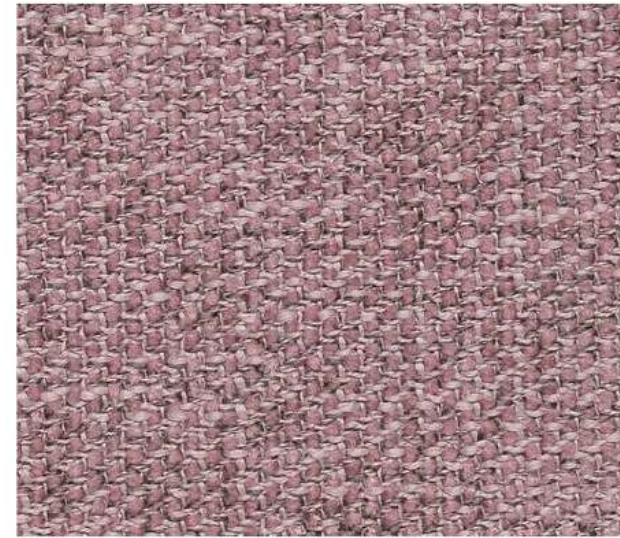
White



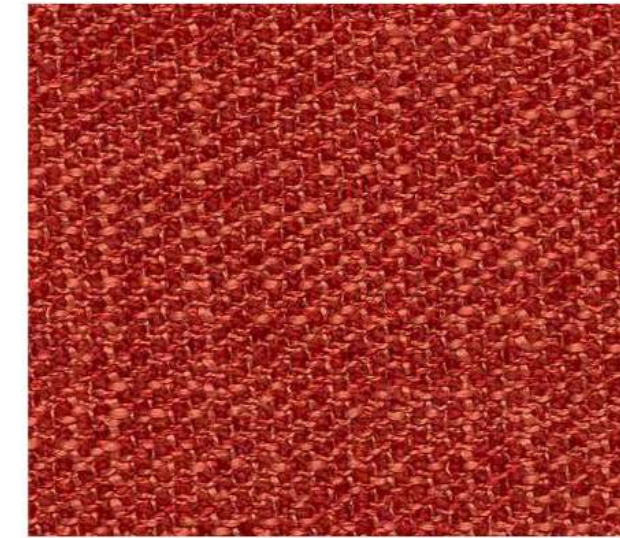
Cream



Light Grey



Lavanda



Orange



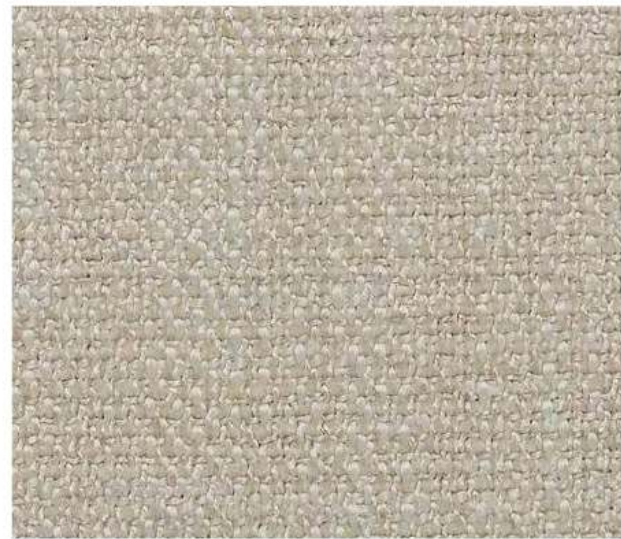
Bordeaux



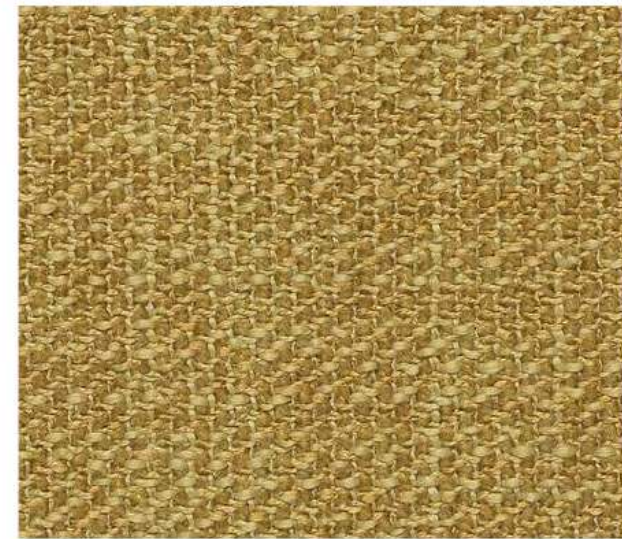
Trufa



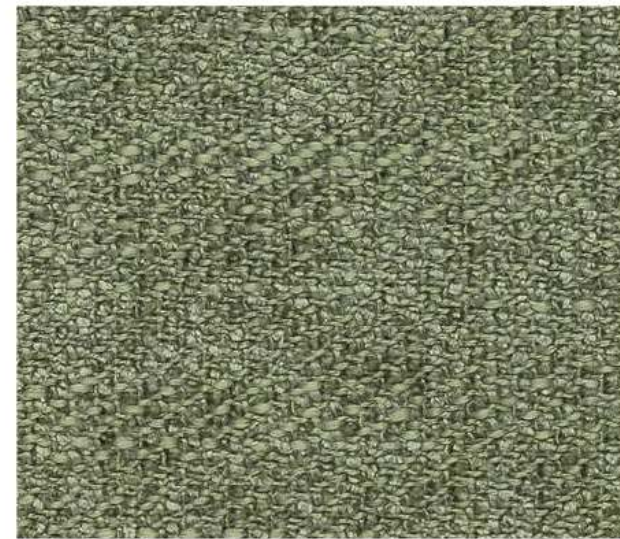
Beige



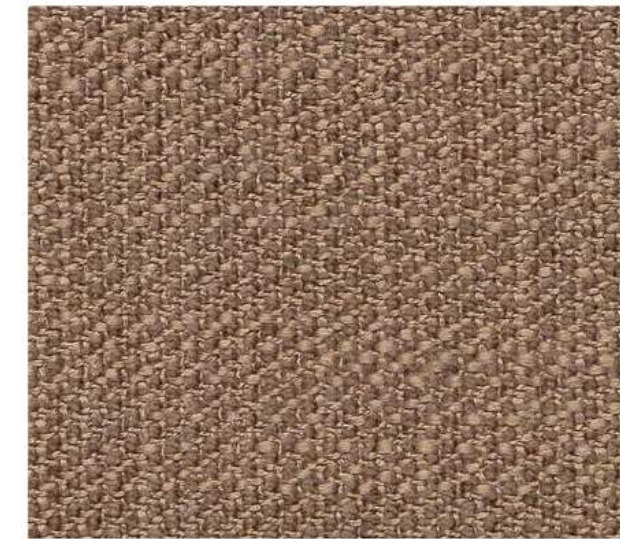
Sand



Citric



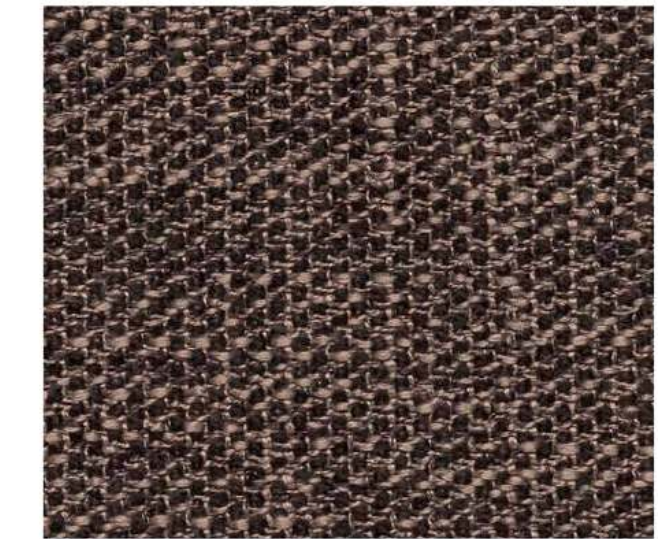
Green



Camel



Brown



Chocolate



Water Green



Turquoise



Blue



Ocean



Steel



Dark Grey



Black

LONDON

FABRIC TYPE

Flat Weave

COMPOSITION

100% Polyester

DURABILITY

80,000 Martindale

LIGHTFASTNESS

5

PILLING

4

FIRE TESTS

BS 5852 part 1 - Cigarette Test PASS

EN 1021-1 - Cigarette Test PASS

CA Tech. Bull. 117:2013 / NFPA 260 - Cigarette Test PASS

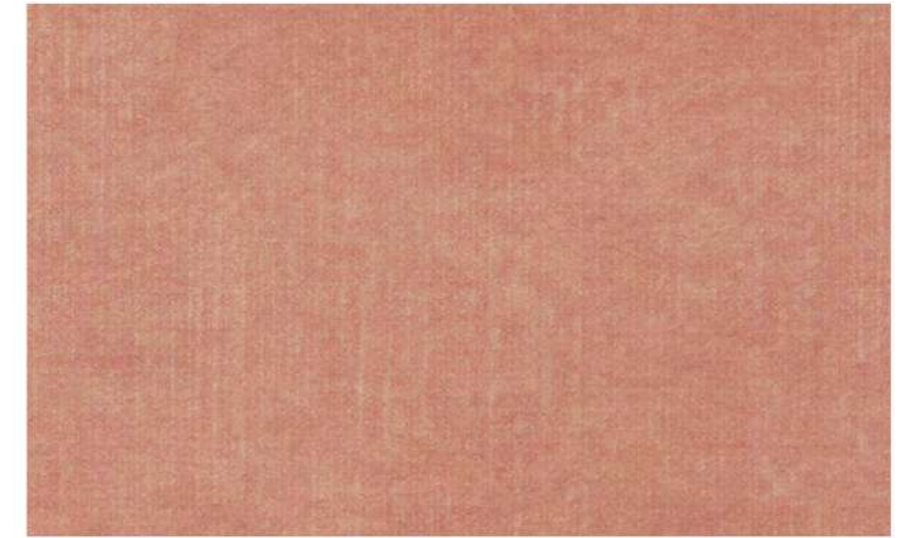
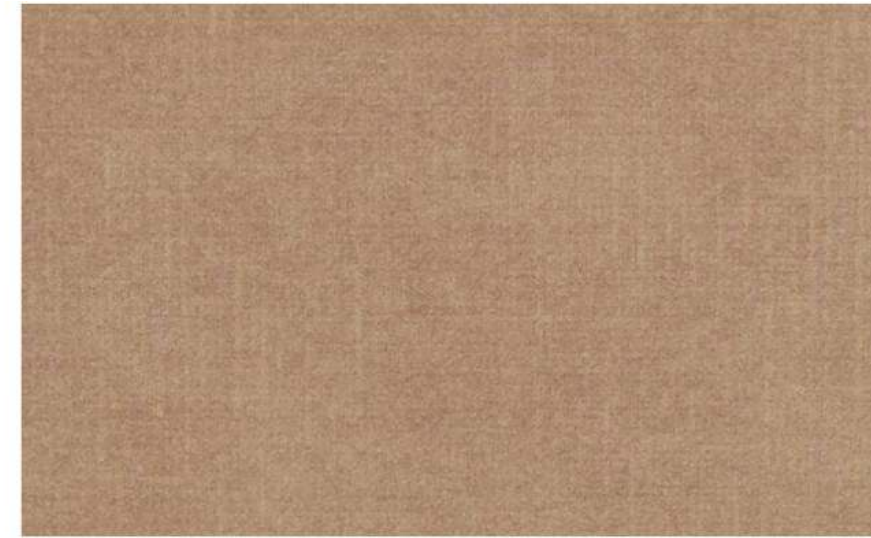
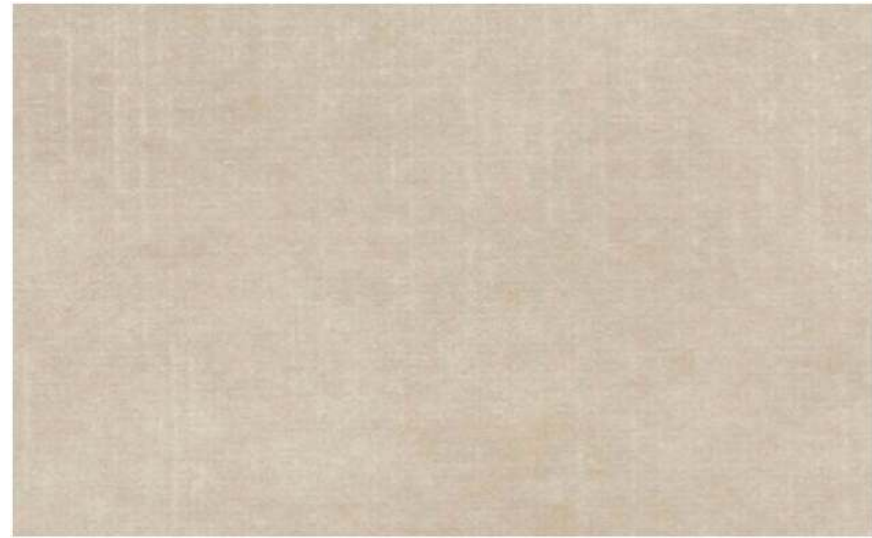


BLUEWORLD®
HUMAN CARE TECHNOLOGY



**STANDARD
100**
9342CIT
CITEVE

Caution: the displayed colours, due to technical matters, are approximate and may differ from the original



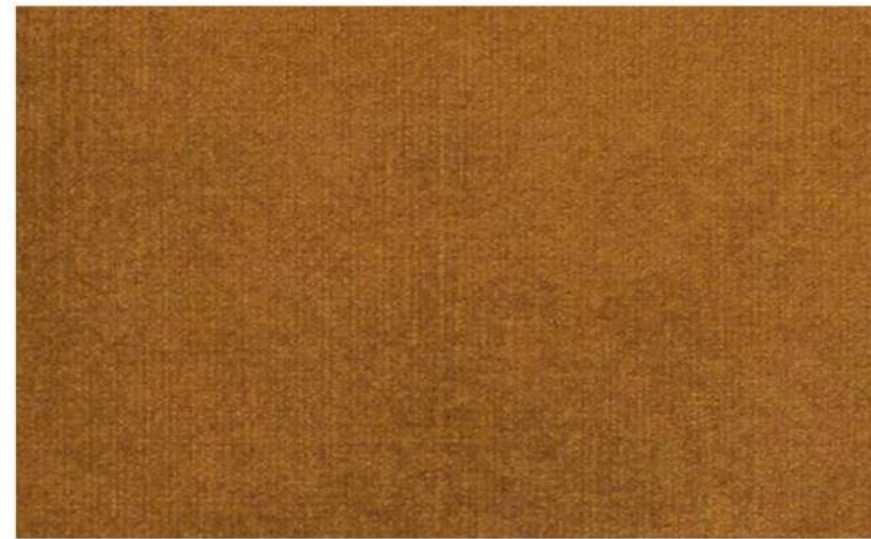
Pearl

Sand

Toffee

Truffle

Coral



Brick

Gold

Cuoio

Terra

Chocolate



Moss

Emerald

Forest

Ash

Black

MACAU

FABRIC TYPE	COMPOSITION	DURABILITY	LIGHTFASTNESS	PILLING	FEATURES	FIRE TESTS
Velvet - Soft Sheen	100% Polyester	90,000 Martindale	5	4 - 5	Anti-Stain Pet Friendly	BS 5852 part 1 - Cigarette Test PASS EN 1021-1 - Cigarette Test PASS CA Tech. Bull. 117:2013 / NFPA 260 - Cigarette Test PASS

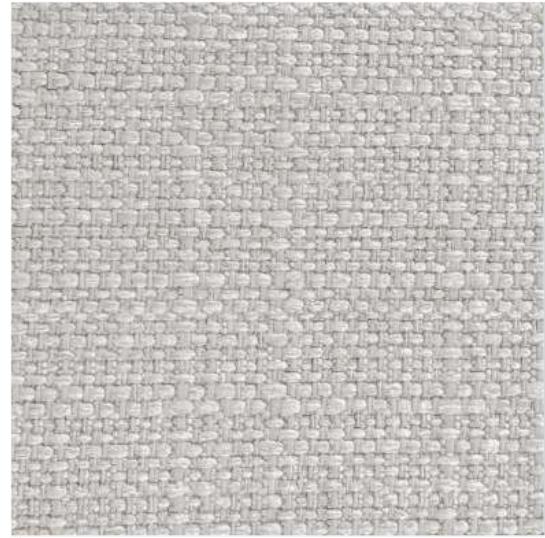


BLUEWORLD[®]
HUMAN CARE TECHNOLOGY



STANDARD
100
9342CIT
CITEVE

Caution: the displayed colours, due to technical matters, are approximate and may differ from the original



White



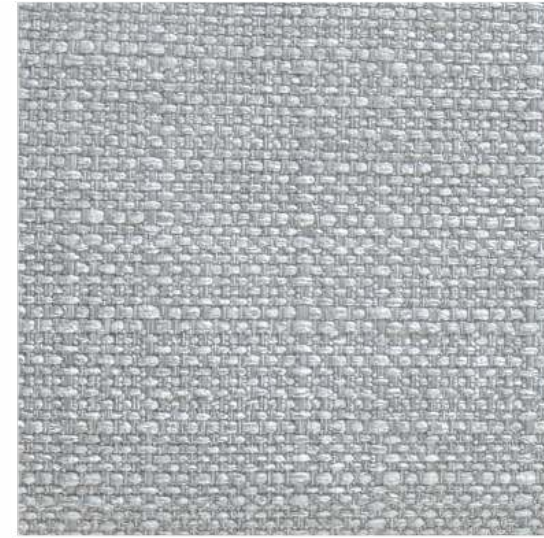
Beige



Taupe



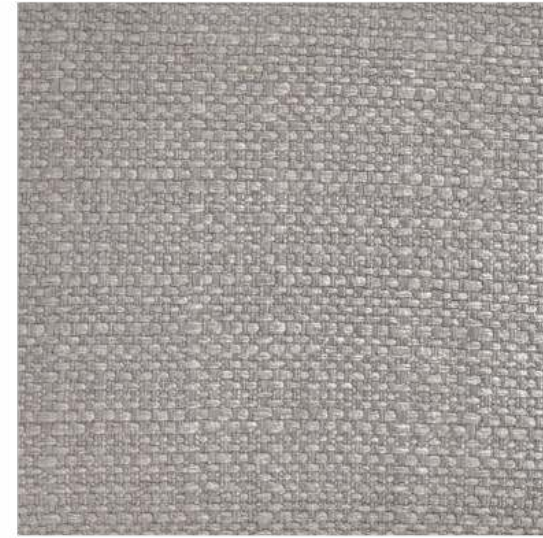
Lilac



Cement



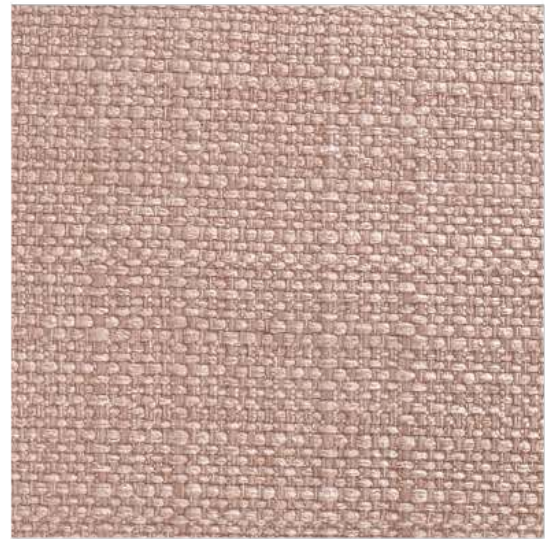
Sand



Ash



Dark Brown



Nude



Yellow



Cognac



Terra



Trufa



Red



Elephant



Mouse



Water Green



Pistachio



Bamboo



Forest



Sky



Turquoise



Ocean



Black

MADEIRA

FABRIC TYPE	COMPOSITION	DURABILITY	LIGHTFASTNESS	PILLING	FIRE TESTS
Textured Flat Weave	100% Polyester	50,000 Martindale	4	5	BS 5852 part 1 - Cigarette Test PASS EN 1021-1 - Cigarette Test PASS CA Tech. Bull. 117:2013 / NFPA 260 - Cigarette Test PASS



STANDARD 100 9342CIT CITEVE

Caution: the displayed colours, due to technical matters, are approximate and may differ from the original



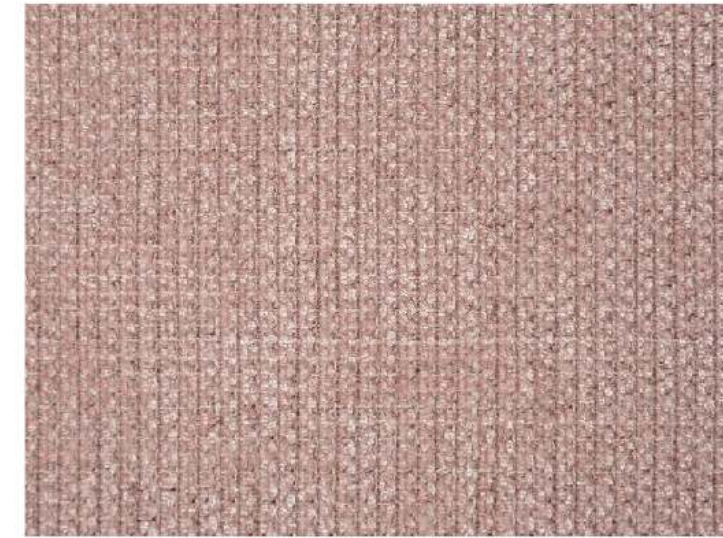
Pearl



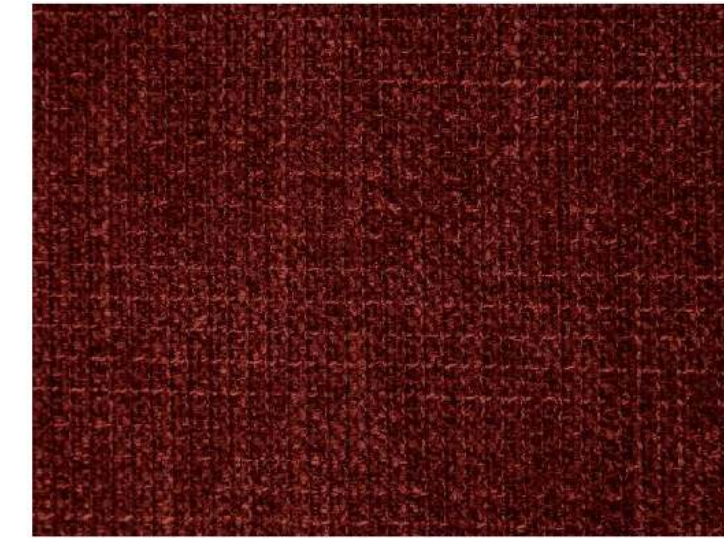
Ivory



Toffee



Pink



Marsala



Deep Purple



Mostaza



Mud



Truffle



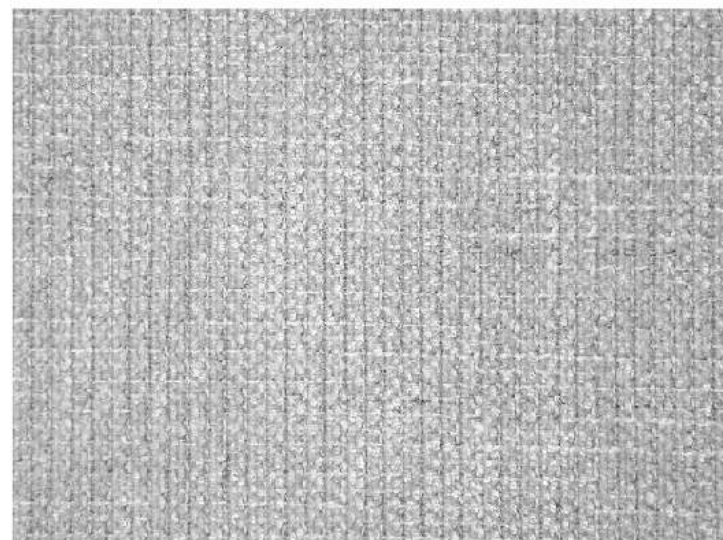
Green



Forest



Chocolate



Cement



Fog



Ocean



Taupe



Anthracite



Black

TRIBU

FABRIC TYPE	COMPOSITION	DURABILITY	LIGHTFASTNESS	PILLING	FEATURES	FIRE TESTS
Chenille	100% Polyester	35,000 Martindale	5	4	Anti-Stain	BS 5852 part 1 - Cigarette Test PASS EN 1021-1 - Cigarette Test PASS CA Tech. Bull. 117:2013 / NFPA 260 - Cigarette Test PASS



BLUEWORLD
HUMAN CARE TECHNOLOGY



STANDARD 100
9342CIT
CITEVE

Caution: the displayed colours, due to technical matters, are approximate and may differ from the original



Sand



Lion



Camel



Cognac



Yam



Masai



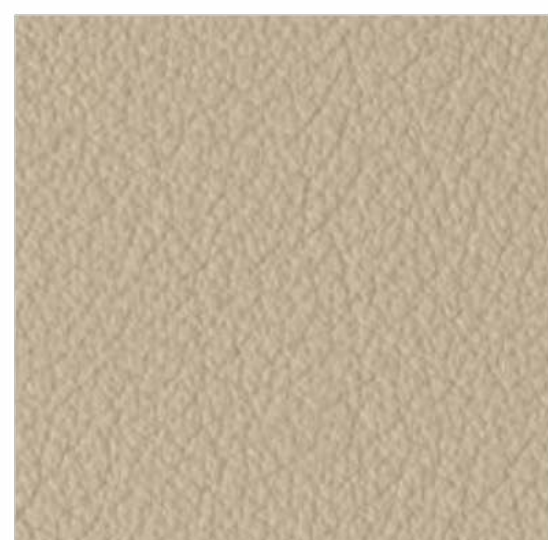
Wine



Caribou



Cement



Toffee



Seapearl



Peral



Stone



Umber



Moss



Bosco



Ivory



White



Ice



Zinc



Shadow



Graphite



Gull



Black

LAGUNA

LEATHER TYPE

Aniline Leather

AVERAGE SKIN THICKNESS

0.9 - 1.1 mm

RAWHIDE

European Bovine

PREPARATION

Lightly Buffed Natural Grain
Transparent Protective Coat, Soft Waxy Feel, Semi-Matte Finish

FIRE TESTS

CAL TB-117 (2013, Sec.1)
BS 5852:1979
BS EN 1021-1-2:2006

Caution: the displayed colours, due to technical matters, are approximate and may differ from the original

COM is also available. Please get in touch with us if you would like more information on available fabrics and colours.

Email: info@nue-modern.com

www.nue-modern.com