

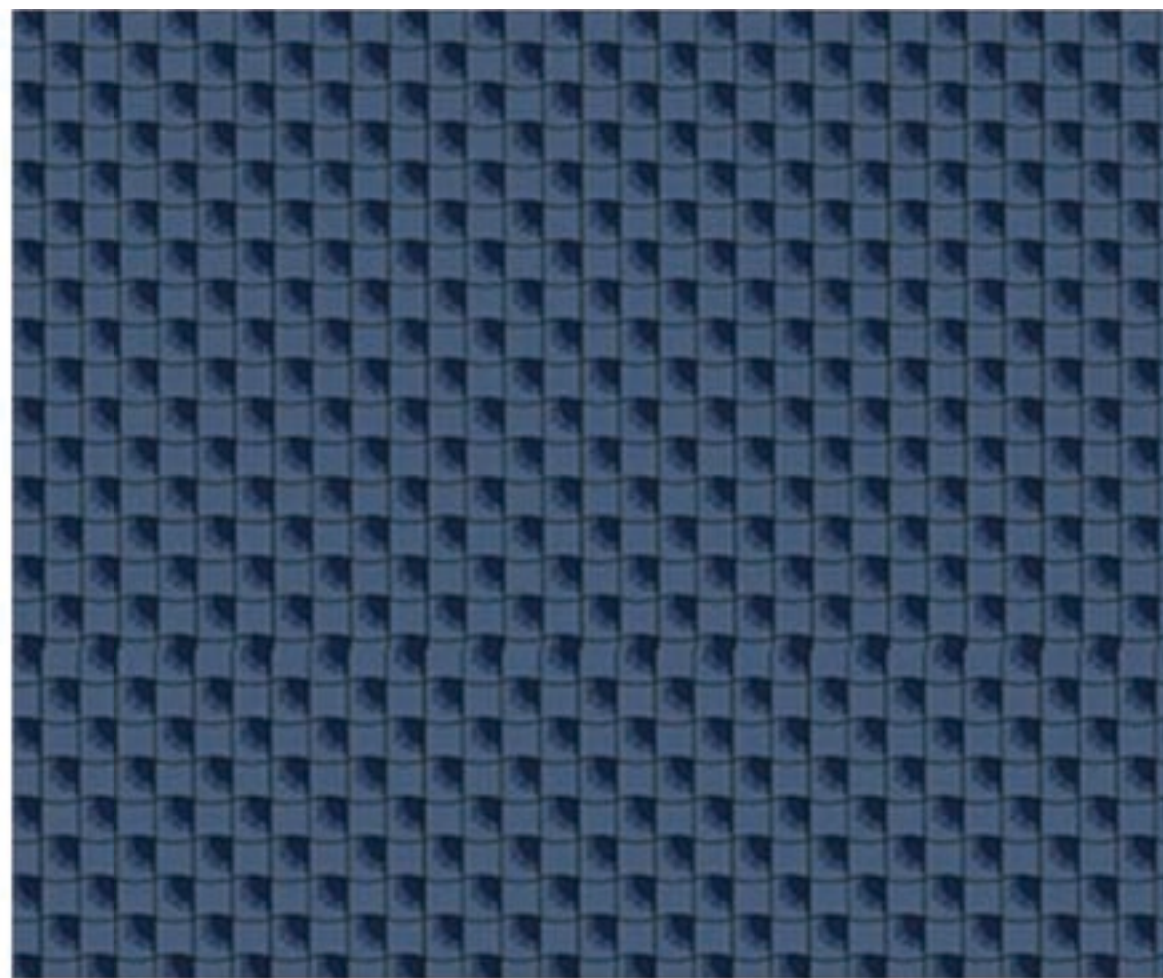


UPHOLSTERY OPTIONS

MAH JONG COLLECTION



BO-93



BO-94



BO-75



BO-19



BO-113



BO-98



LI-40



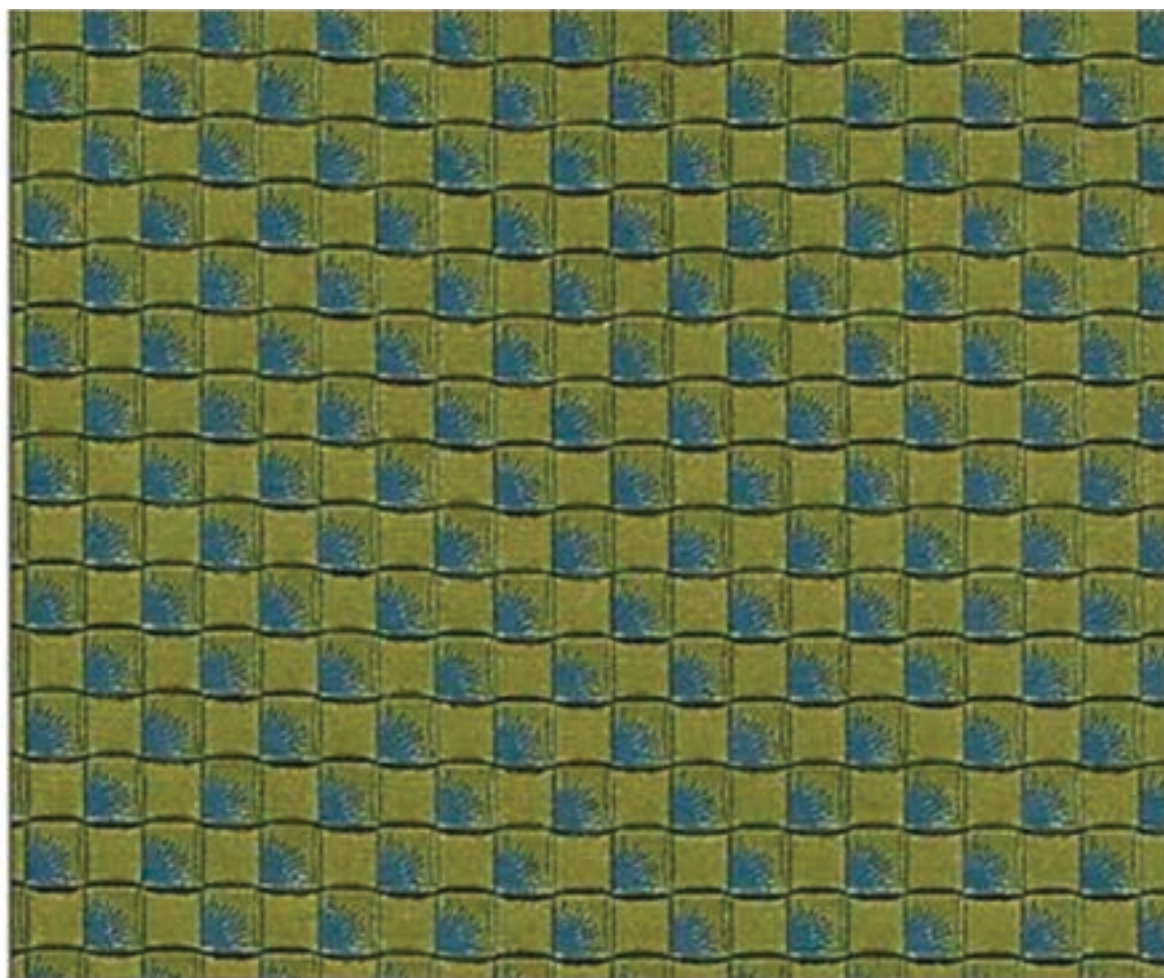
BO-102

IRUNE

Caution: the displayed colours, due to technical matters, are approximate and may differ from the original



BO-93



BO-95



BO-75



BO-18



BO-113



BO-99



LI-40



BO-102

UMI

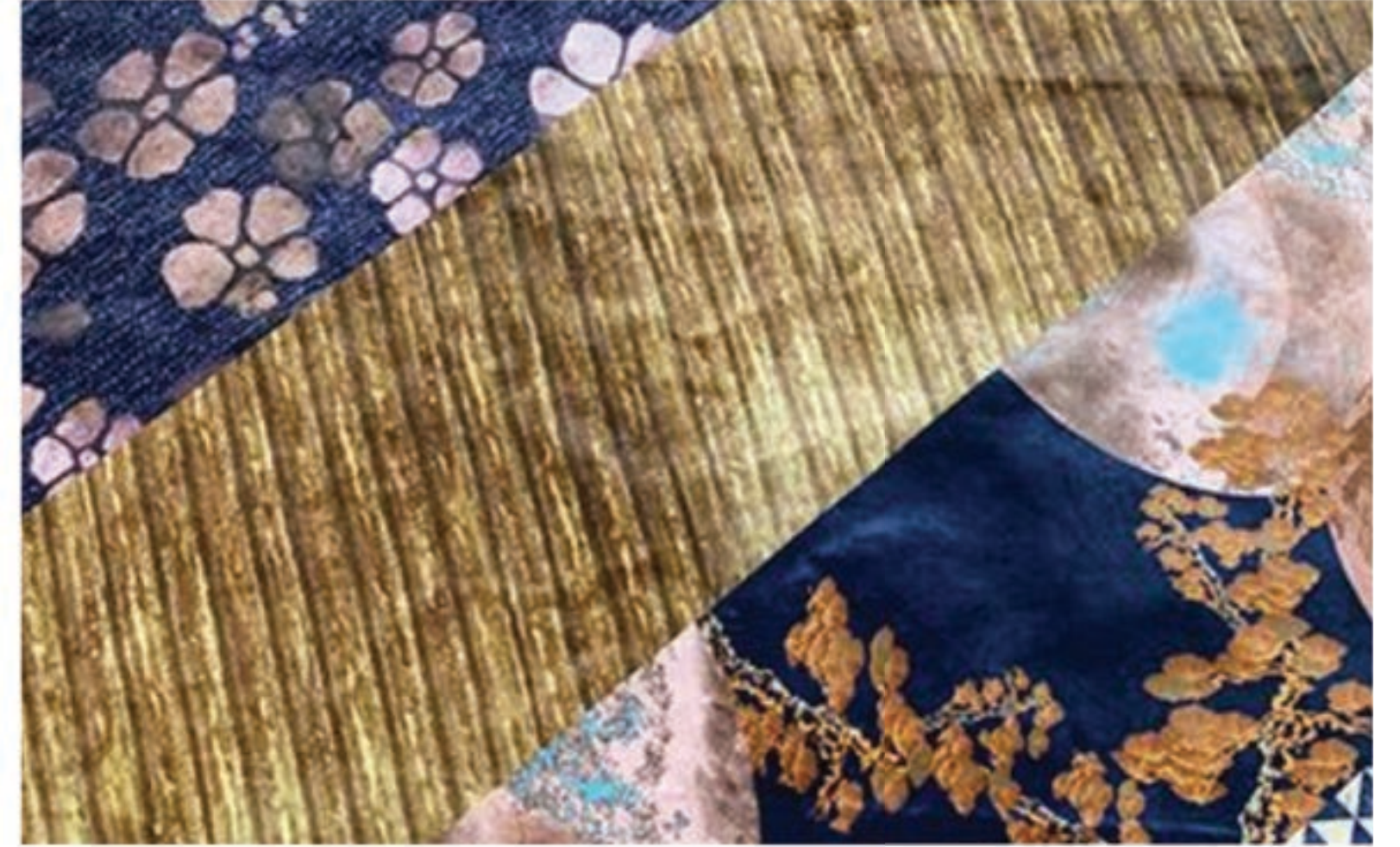
Caution: the displayed colours, due to technical matters, are approximate and may differ from the original



BO-30



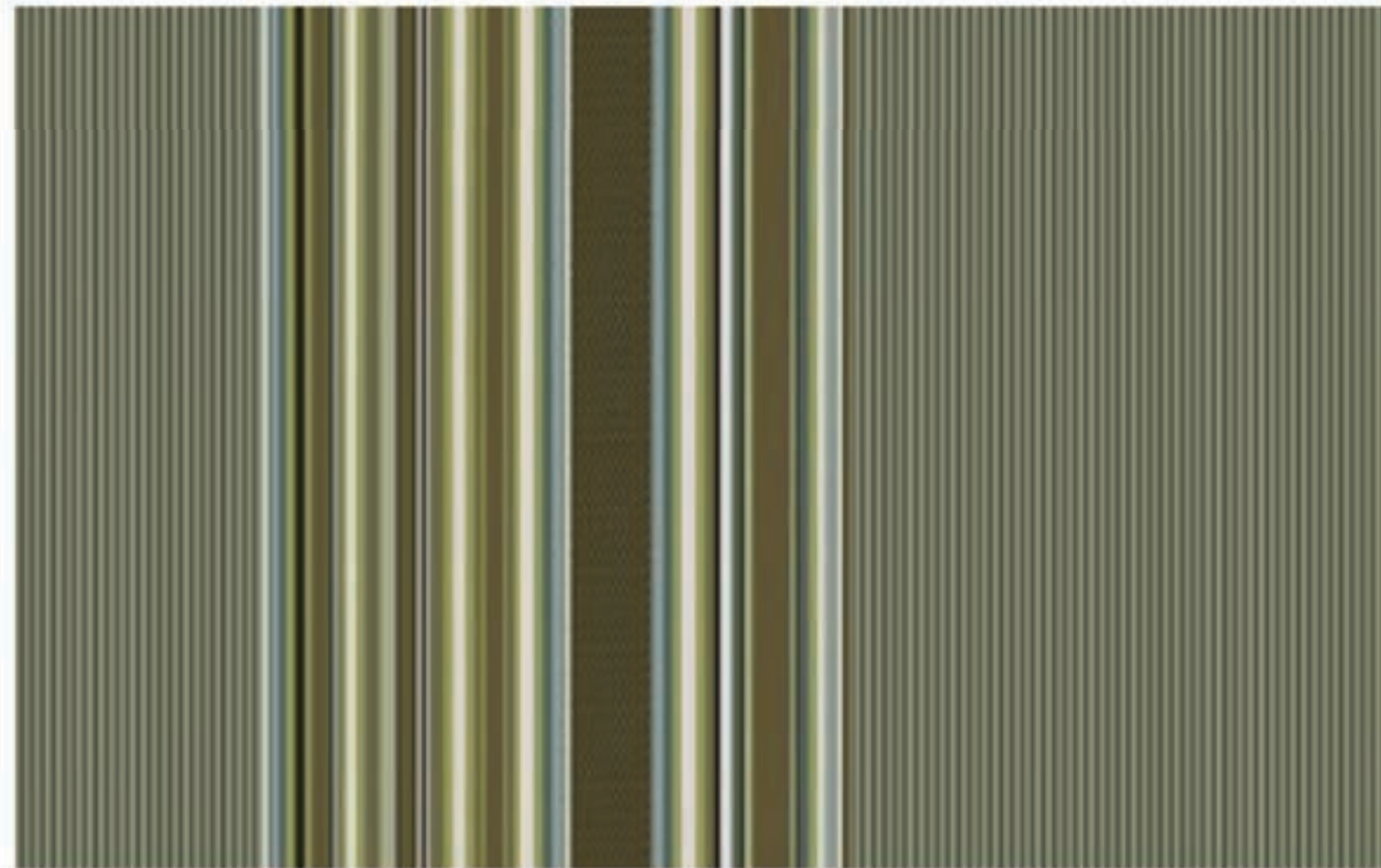
D32



BO-38



BO-42



BO-33



D05

YORU

Caution: the displayed colours, due to technical matters, are approximate and may differ from the original



BO-37



SI-44



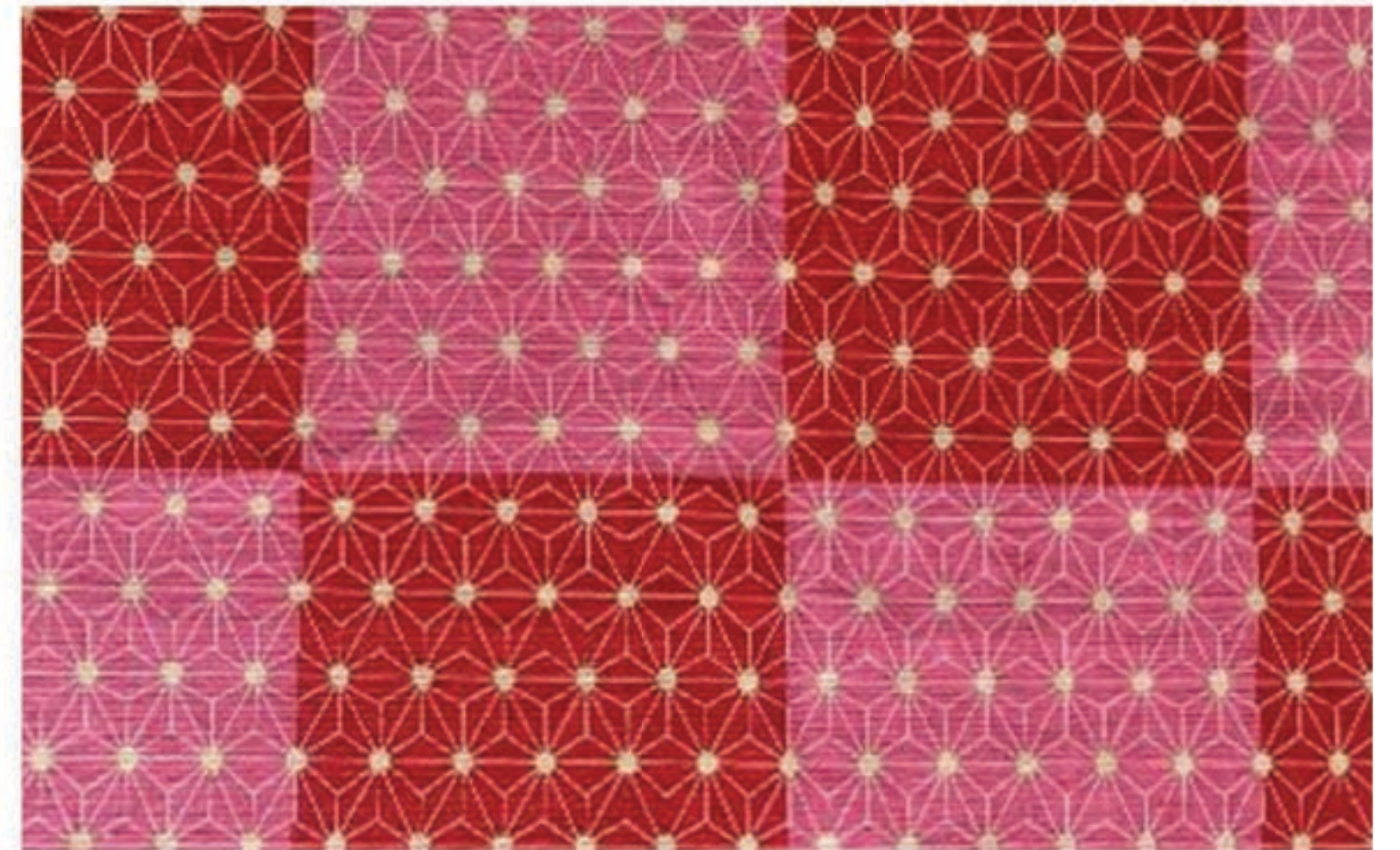
BO-27



BO-41



SI-41



BO-44

HIRU

Caution: the displayed colours, due to technical matters, are approximate and may differ from the original



BO-36



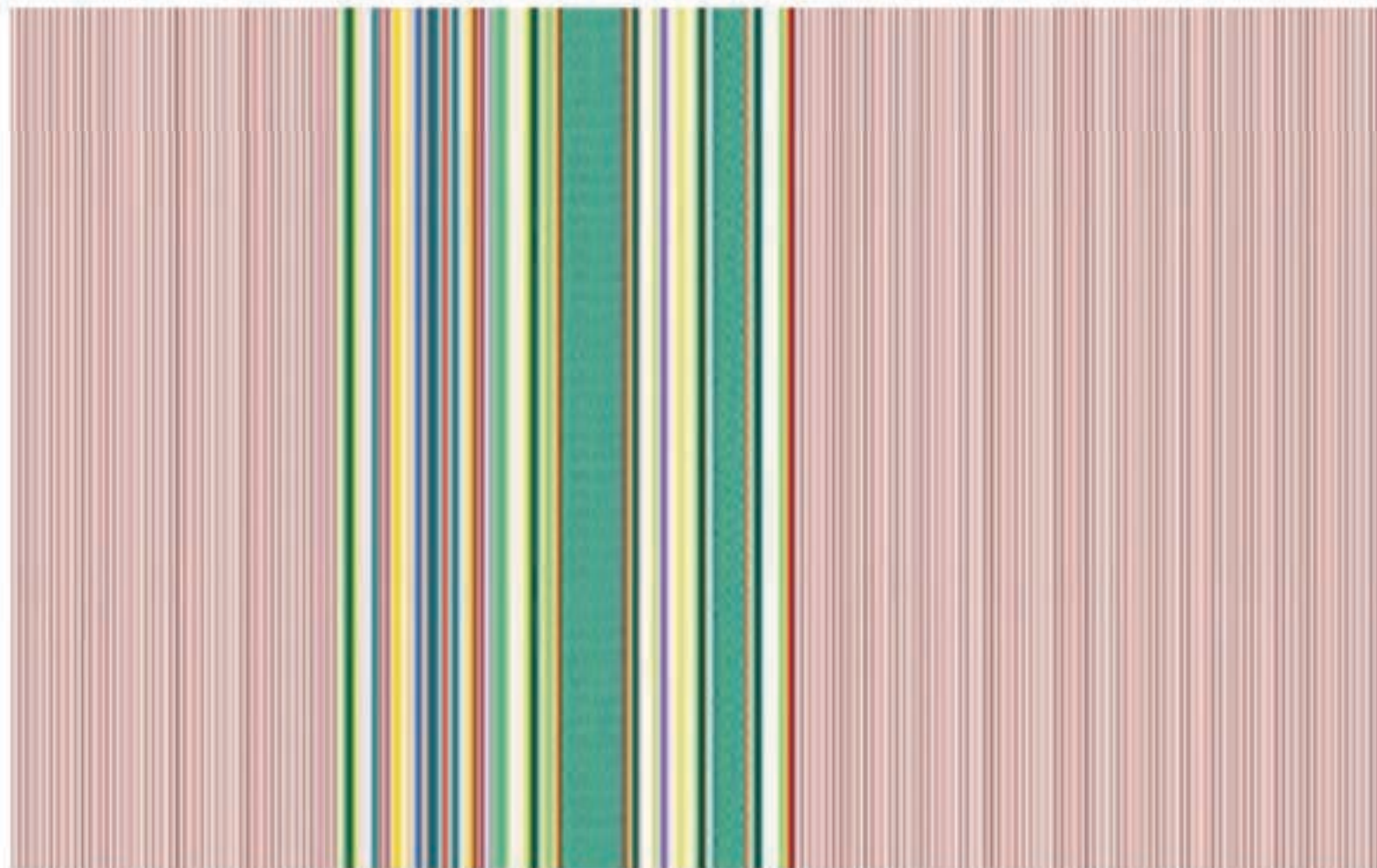
SI-41



BO-40



BO-26



BO-31



SI-11

ASA



BO-01



LI-49



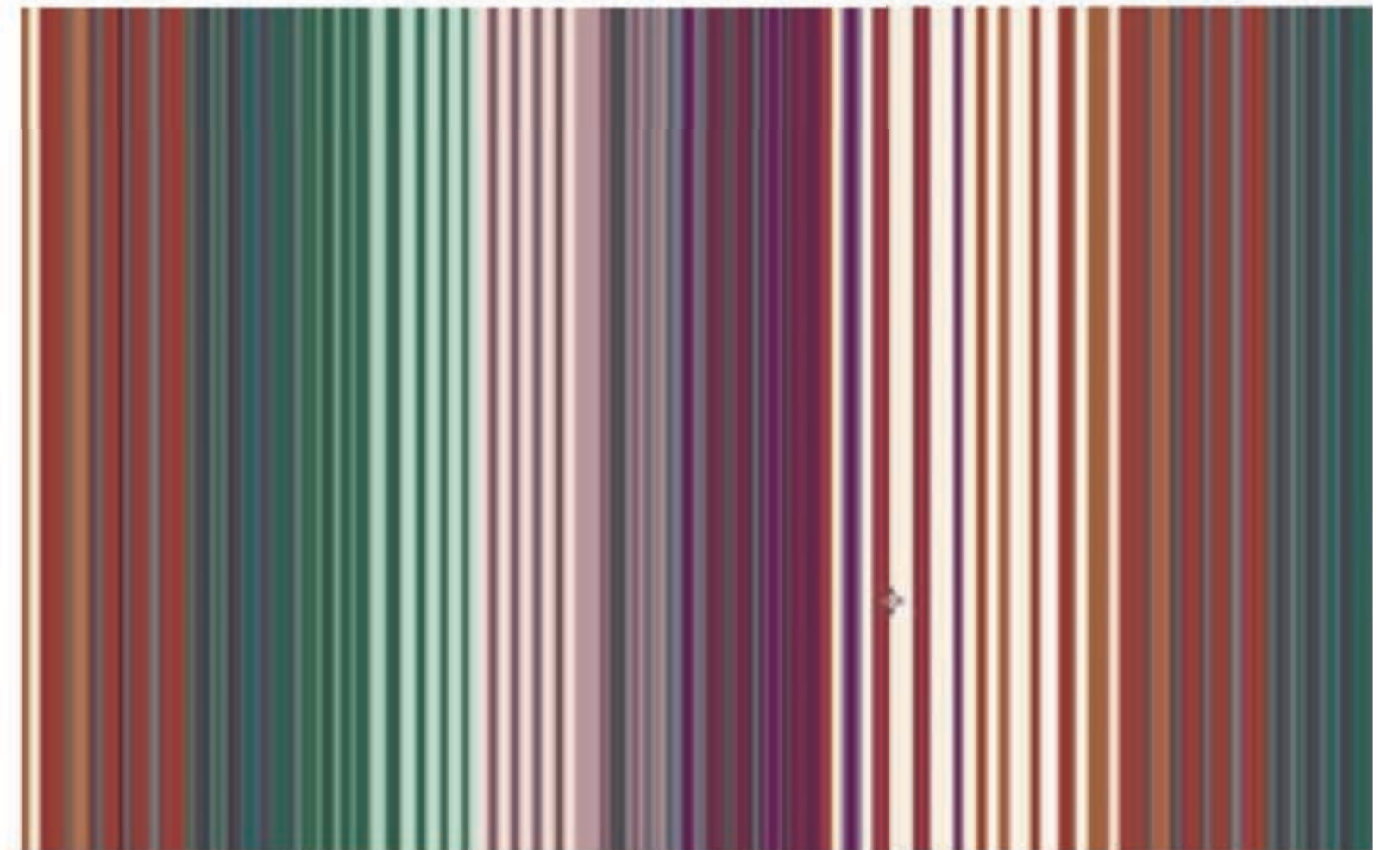
BO-58



BO-06



LI-41



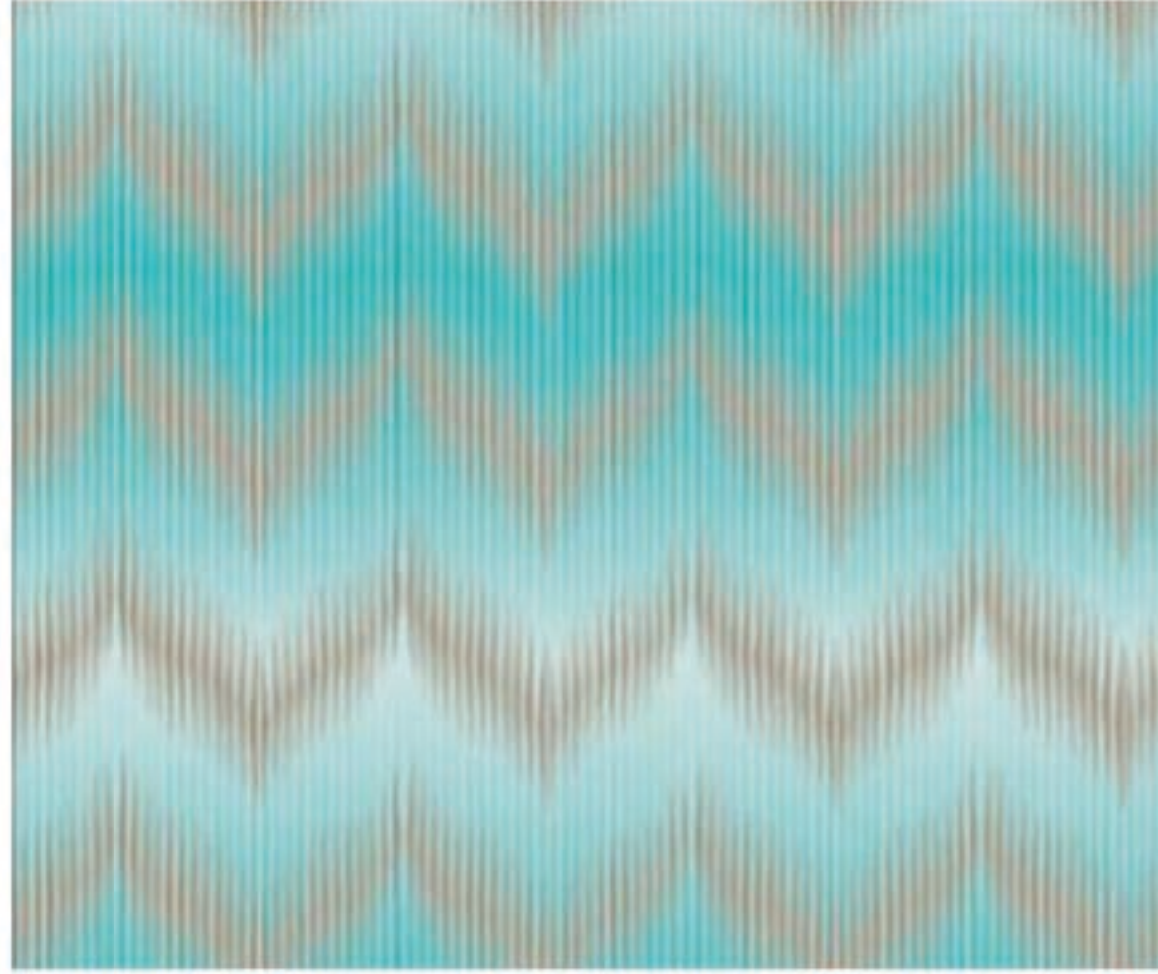
BO-11

NUH

Caution: the displayed colours, due to technical matters, are approximate and may differ from the original



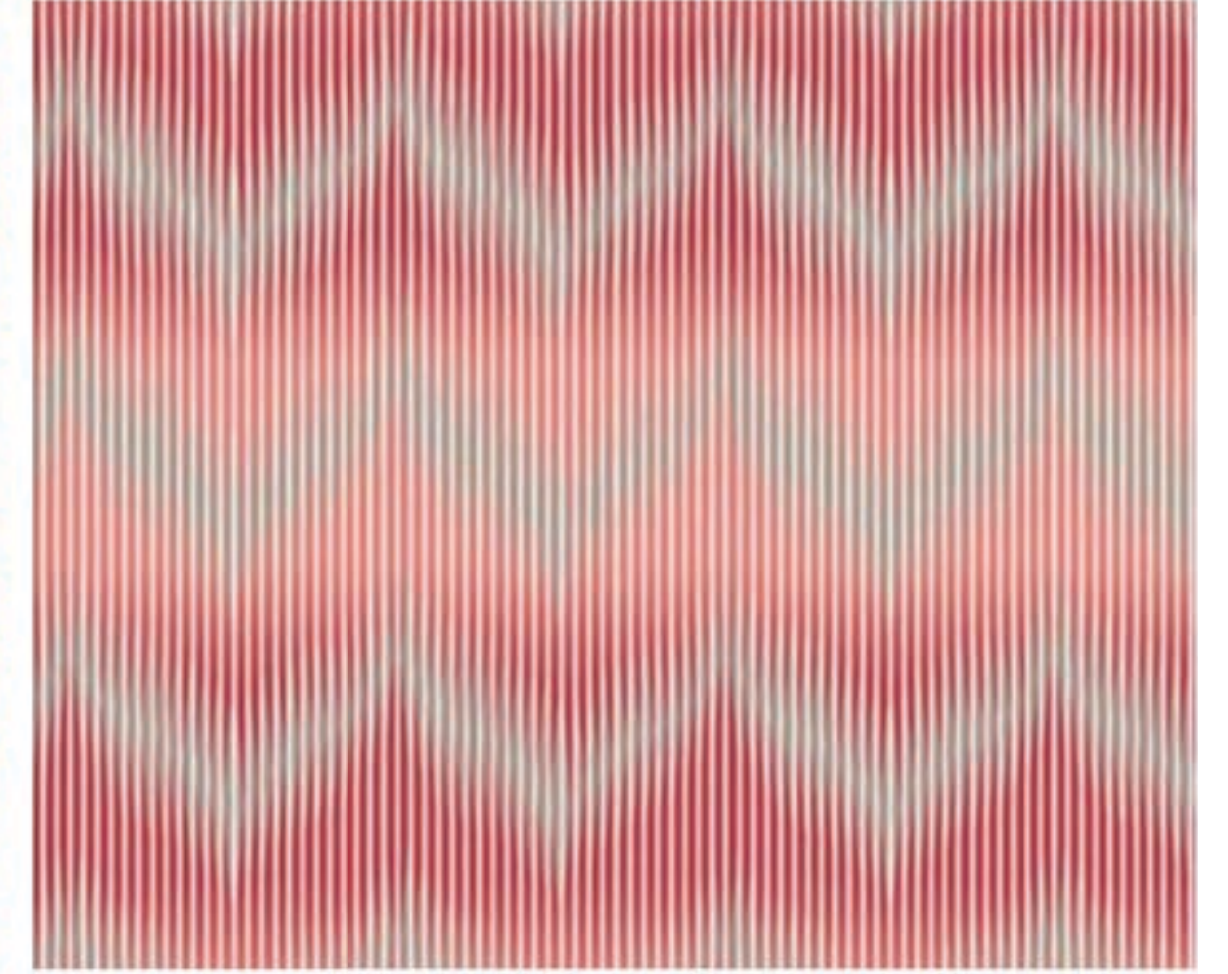
BO-21



BO-66



BO-73



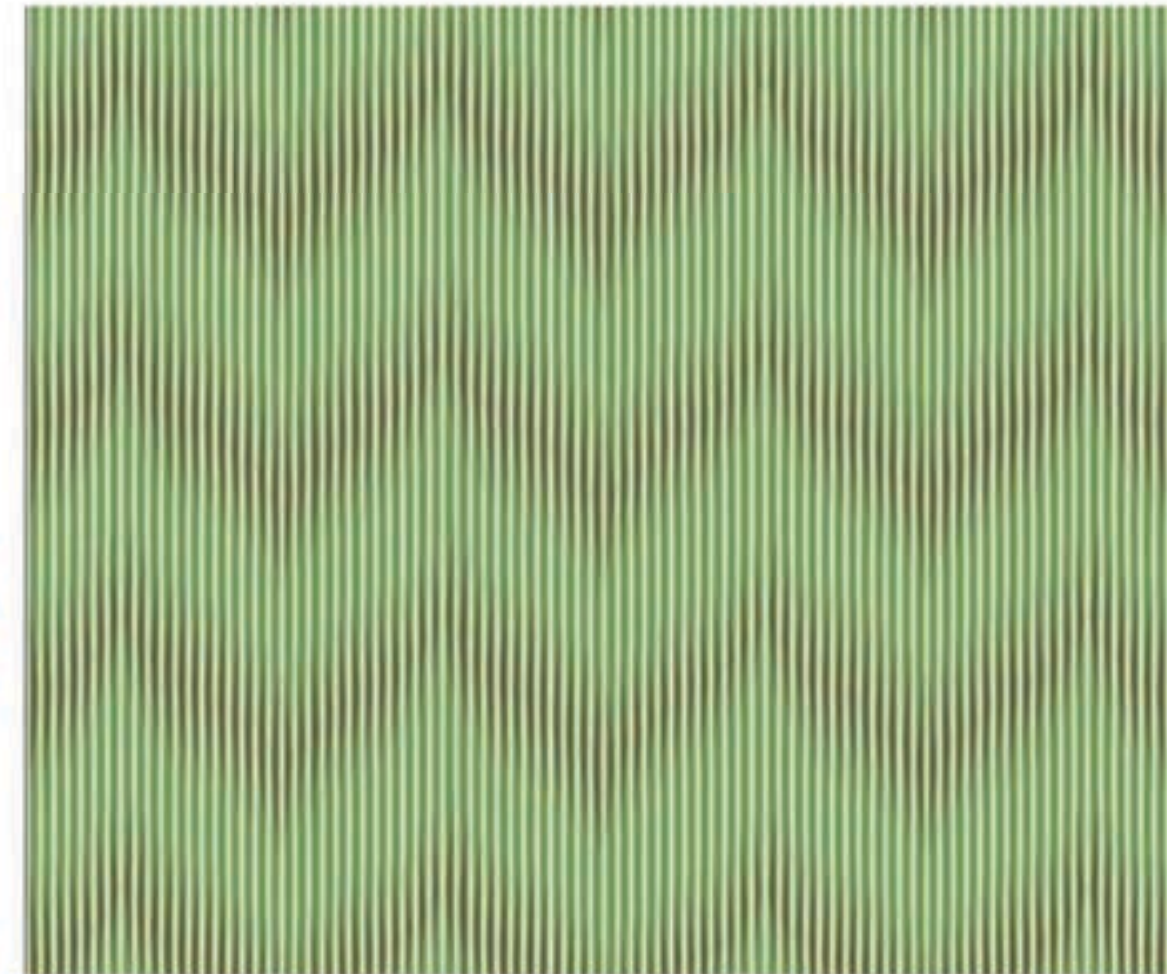
BO-65



BO-48



BO-72



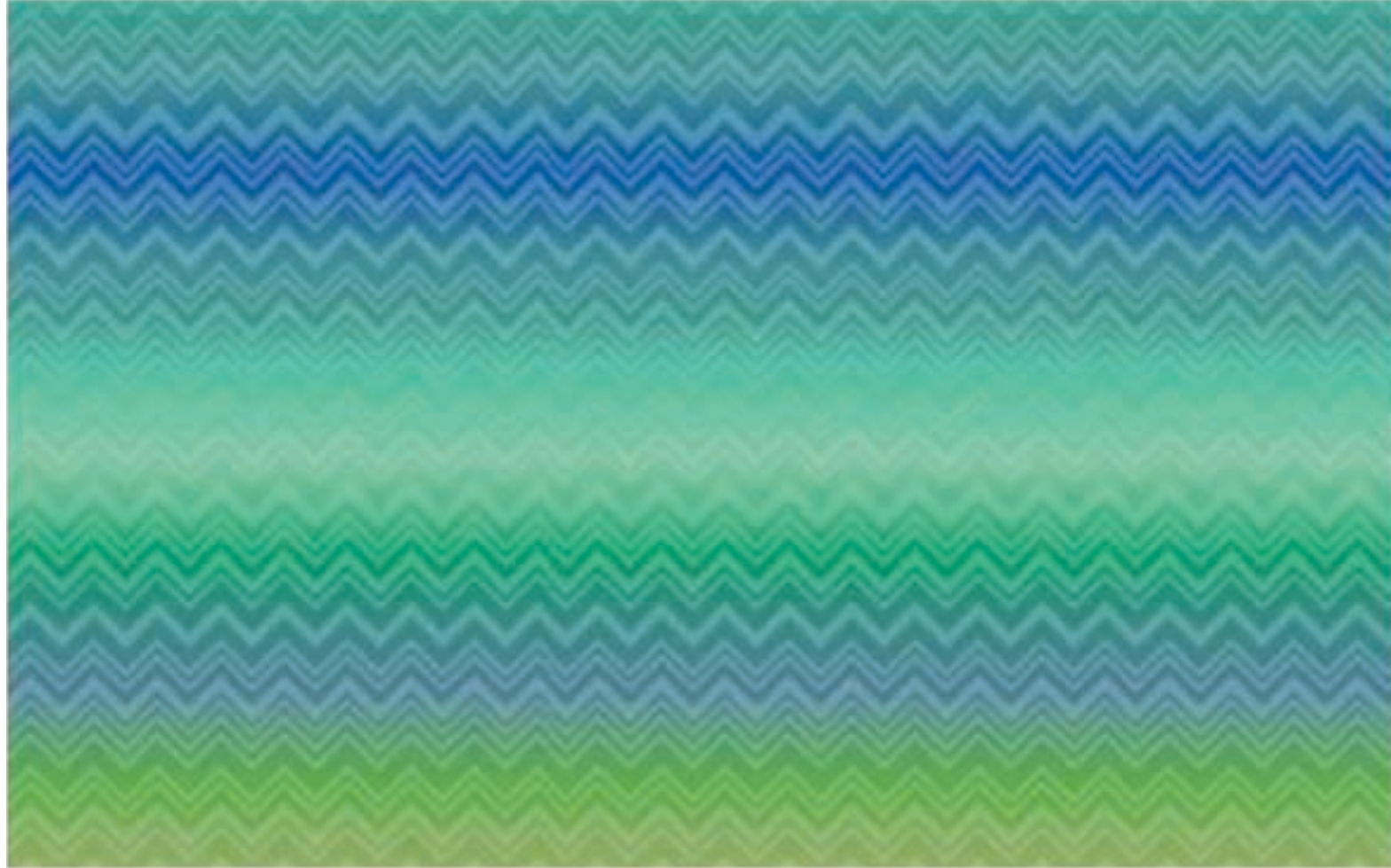
BO-67



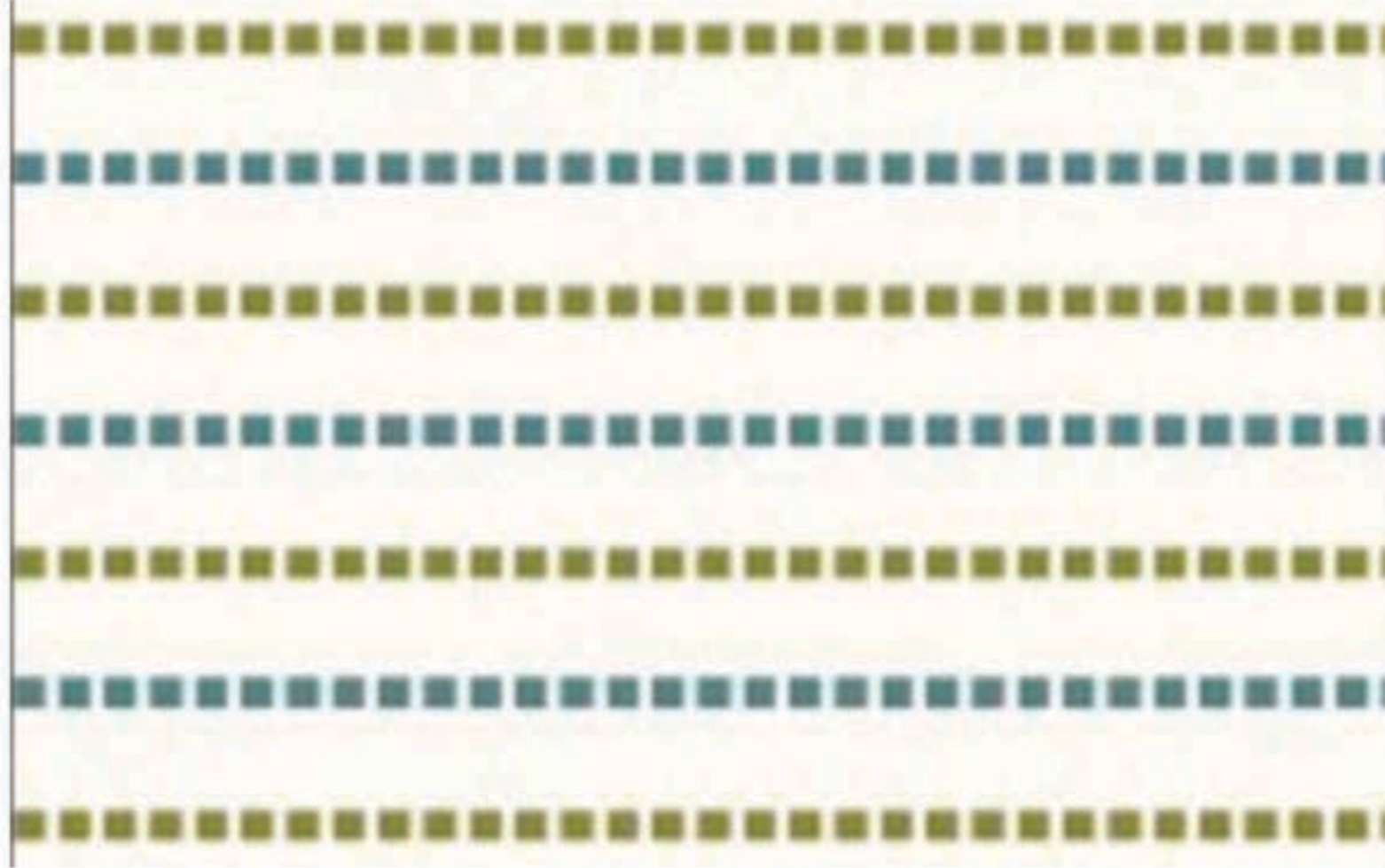
BO-77

KEW

Caution: the displayed colours, due to technical matters, are approximate and may differ from the original



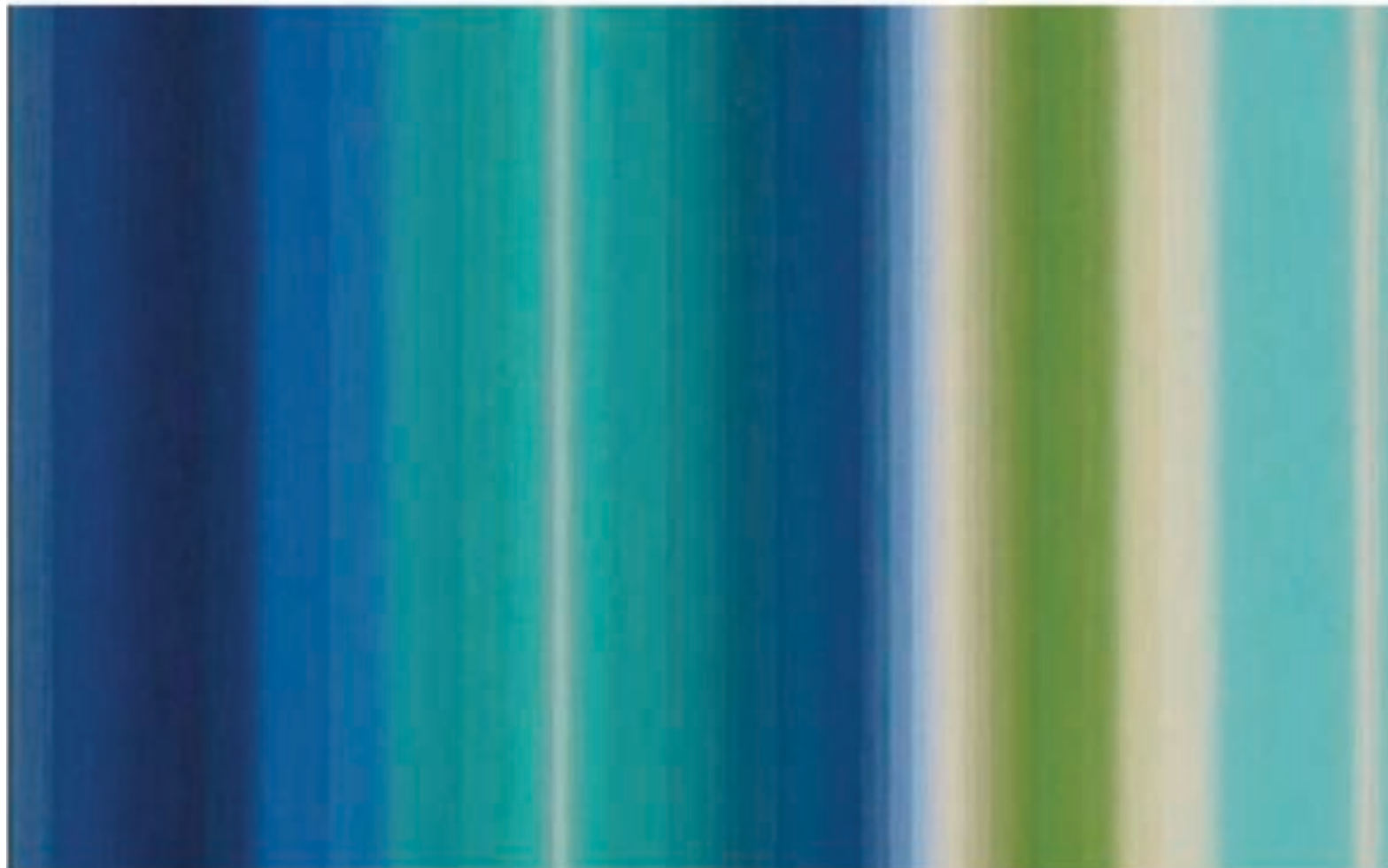
BO-60



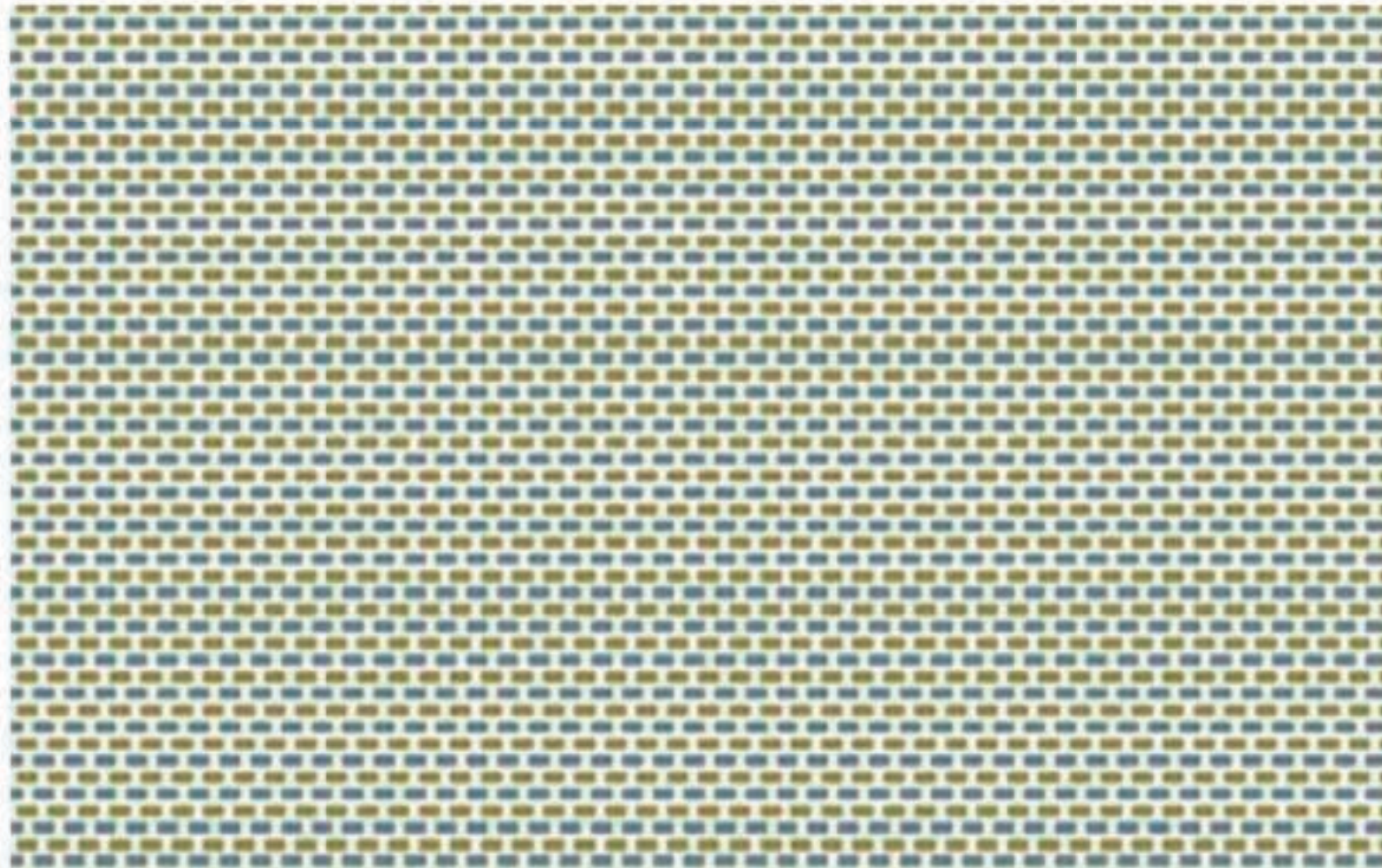
BO-129



BO-57



BO-20



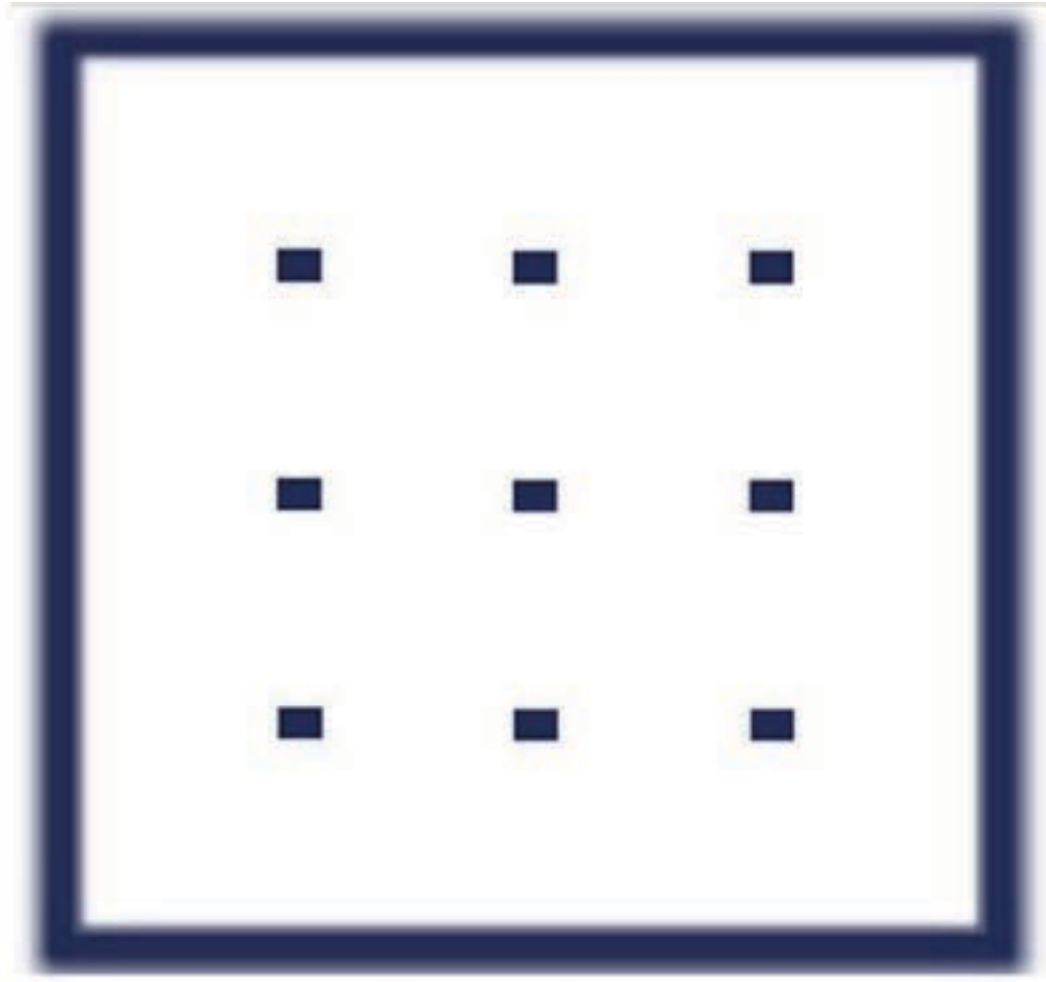
BO-128



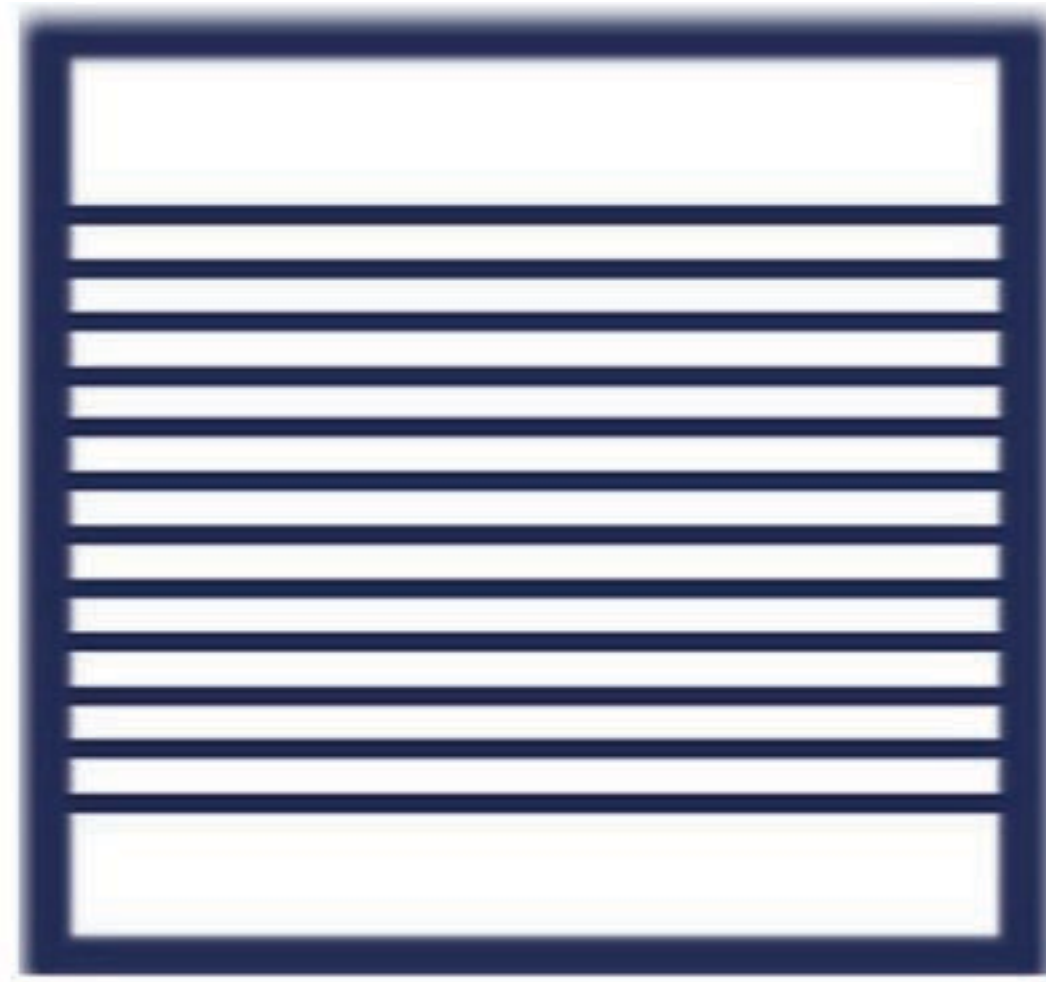
BO-127

IKON

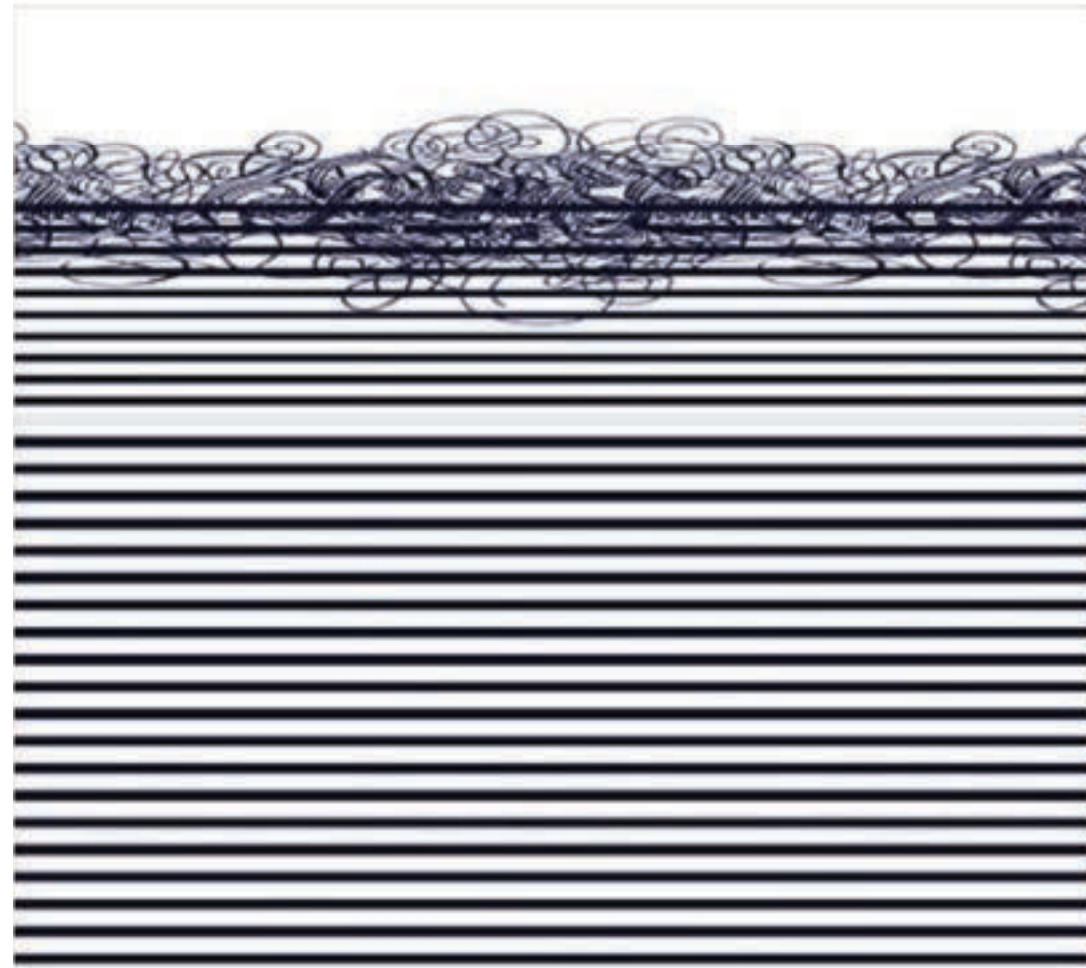
Caution: the displayed colours, due to technical matters, are approximate and may differ from the original



Carre Blue



Marelot



Couture Caligraphie



Couture Dentelle



Couture Tattoo

JPG



APOLLO

FABRIC TYPE	COMPOSITION	DURABILITY	LIGHTFASTNESS	PILLING	FEATURES	FIRE TESTS
Chenille	100% Polyester	100,000 Martindale	4 - 5	4 - 5	Anti-Stain Liquid Repellent	BS 5852 part 1 - Cigarette Test PASS EN 1021-1 - Cigarette Test PASS CA Tech. Bull. 117:2013 / NFPA 260 - Cigarette Test PASS



BLUEWORLD[®]
HUMAN CARE TECHNOLOGY



STANDARD
100
9342CIT
CITEVE

Caution: the displayed colours, due to technical matters, are approximate and may differ from the original



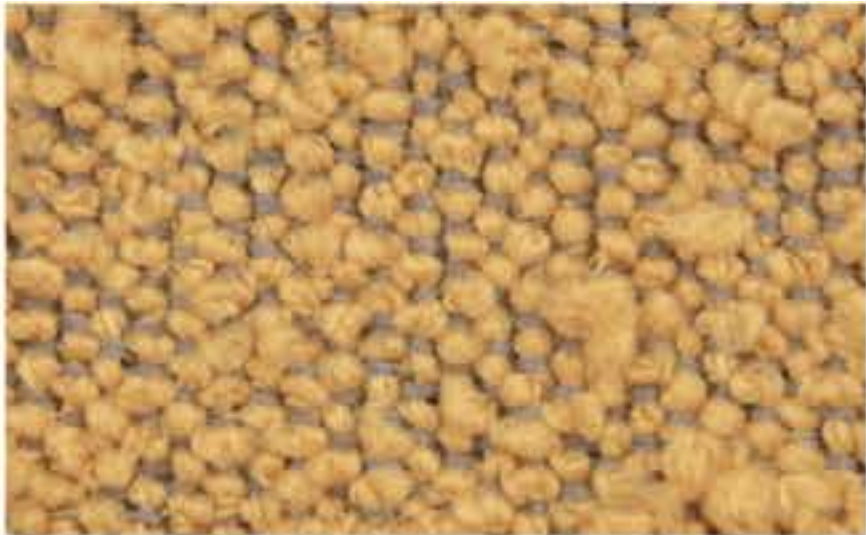
Nata



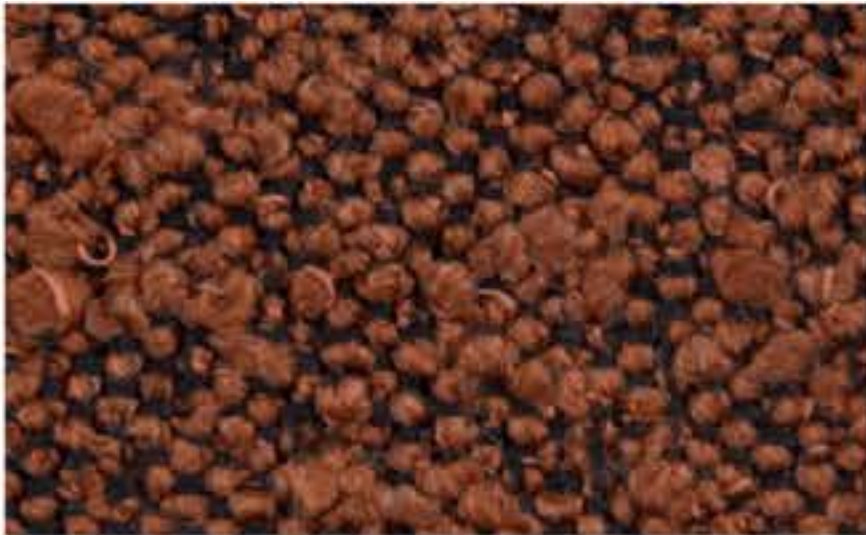
Pearl



Champagne



Mostaza



Brick



Pink



Toffee



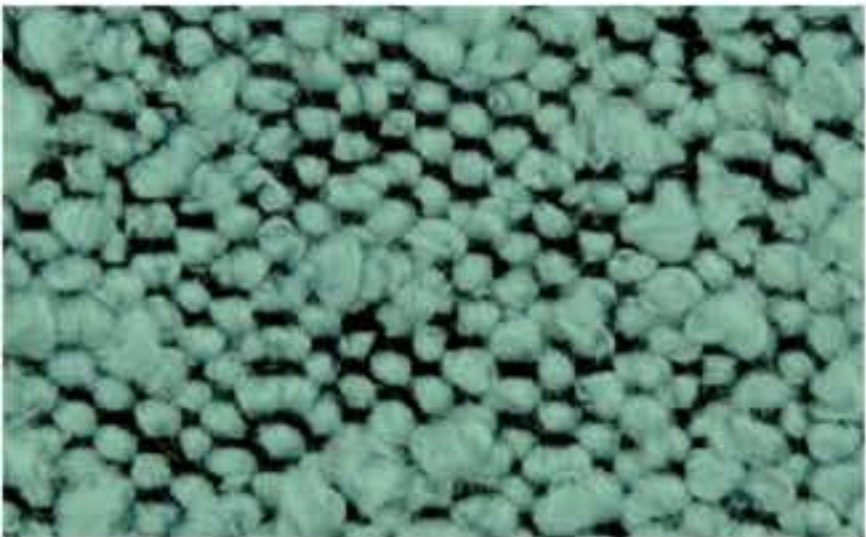
Taupe



Mouse



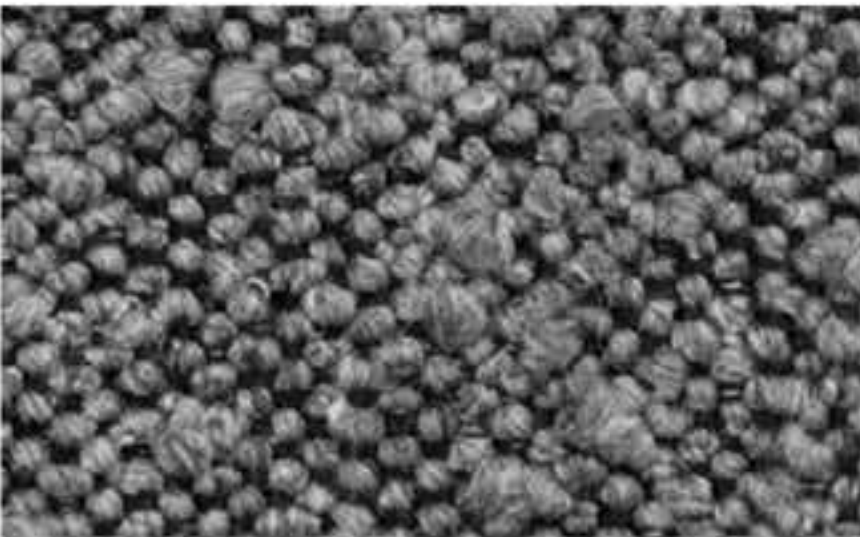
Olive Green



Safira



Atlantic



Graphite



Black

ASCOT

FABRIC TYPE	COMPOSITION	DURABILITY	LIGHTFASTNESS	PILLING	FIRE TESTS
Bouclé	100% Polyester	80,000 Martindale	5	4	BS 5852 part 1 - Cigarette Test PASS EN 1021-1 - Cigarette Test PASS CA Tech. Bull. 117:2013 / NFPA 260 - Cigarette Test PASS



Caution: the displayed colours, due to technical matters, are approximate and may differ from the original



BALTIC

FABRIC TYPE	COMPOSITION	DURABILITY	LIGHTFASTNESS	PILLING	FEATURES	FIRE TESTS
Chenille	100% Polyester	35,000 Martindale	5	4	Anti-Stain	BS 5852 part 1 - Cigarette Test PASS EN 1021-1 - Cigarette Test PASS CA Tech. Bull. 117:2013 / NFPA 260 - Cigarette Test PASS



BLUEWORLD®
HUMAN CARE TECHNOLOGY



STANDARD
100
9342CIT
CITEVE

Caution: the displayed colours, due to technical matters, are approximate and may differ from the original



White



Sand



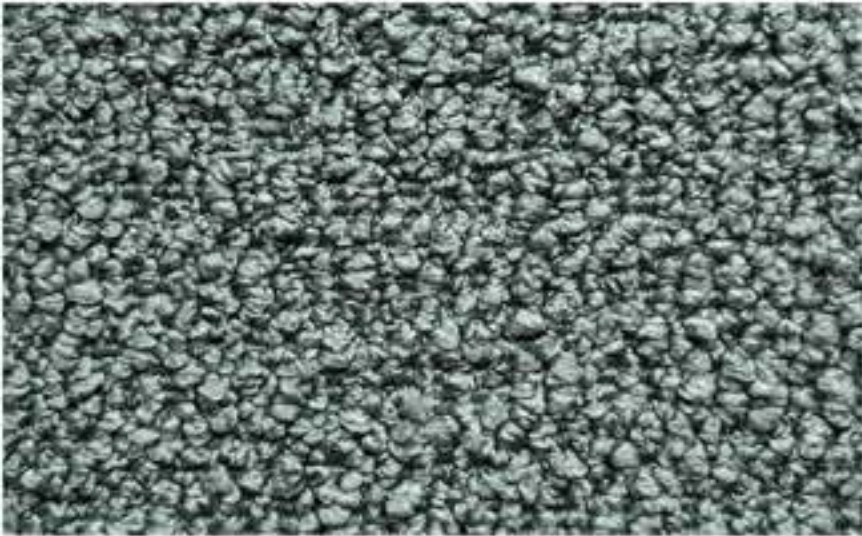
Pale Rose



Paprika



Cinnamon



Aqua



Pine



Hunter



Dark Forest



Fossil



Pebble



Dove



Stone



Shadow



Charcoal

BOUCLÉ

FABRIC TYPE	COMPOSITION	DURABILITY	LIGHTFASTNESS	PILLING
Bouclé	100% Polyester	80,000 Martindale	3	4

Caution: the displayed colours, due to technical matters, are approximate and may differ from the original



CASINO

FABRIC TYPE	COMPOSITION	DURABILITY	LIGHTFASTNESS	PILLING	FEATURES	FIRE TESTS
Velvet - Matte Finish	100% Polyester	100,000 Martindale	4 - 5	4 - 5	Anti-Stain Pet Friendly	BS 5852 part 1 - Cigarette Test PASS EN 1021-1 - Cigarette Test PASS CA Tech. Bull. 117:2013 / NFPA 260 - Cigarette Test PASS



Caution: the displayed colours, due to technical matters, are approximate and may differ from the original



Milk



Cream



Warm Grey



Sand



Camel



Taupe



Mink



Ebony



Mostaza



Masai



Copper



Rust



Mauve



Marsala



Red



Bourdeaux



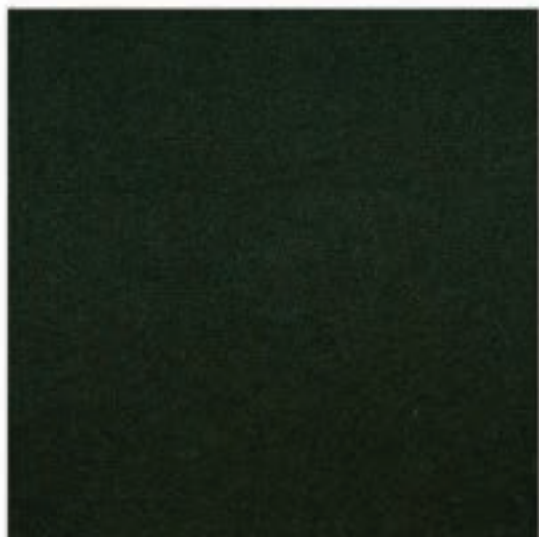
Cement



Olive



Forest



Emerald



Steel Blue



Mid Grey



Navy



Black

HARALD

FABRIC TYPE	COMPOSITION	DURABILITY	LIGHTFASTNESS	PILLING	FEATURES	FIRE TESTS
Velvet - Soft Sheen	100% Cotton	50,000 Martindale	3	5	Liquid Repellent	BS 5852 part 1 - Cigarette Test PASS EN 1021-1 - Cigarette Test PASS CA Tech. Bull. 117:2013 / NFPA 260 - Cigarette Test PASS

Caution: the displayed colours, due to technical matters, are approximate and may differ from the original



Pearl



Sand



Toffee



Truffle



Coral



Brick



Gold



Cuoio



Terra



Chocolate



Moss



Emerald



Forest



Ash



Black

MACAU

FABRIC TYPE	COMPOSITION	DURABILITY	LIGHTFASTNESS	PILLING	FEATURES	FIRE TESTS
Velvet - Soft Sheen	100% Polyester	90,000 Martindale	5	4 - 5	Anti-Stain Pet Friendly	BS 5852 part 1 - Cigarette Test PASS EN 1021-1 - Cigarette Test PASS CA Tech. Bull. 117:2013 / NFPA 260 - Cigarette Test PASS



BLUEWORLD[®]
HUMAN CARE TECHNOLOGY



STANDARD
100
9342CIT
CITEVE

Caution: the displayed colours, due to technical matters, are approximate and may differ from the original



Nata



Toffee



Sand



Truffle



Mud



Taupe



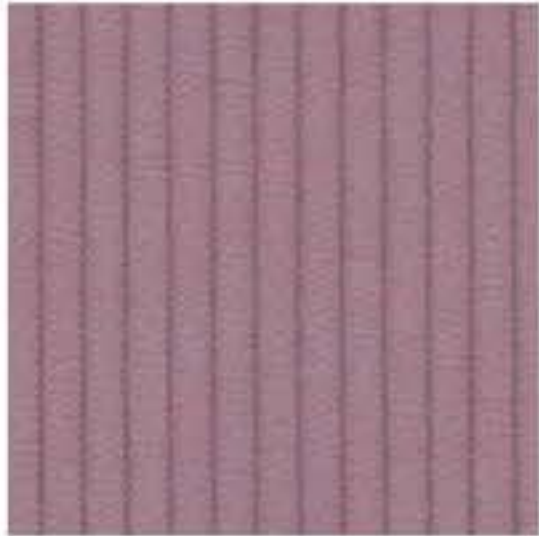
Chocolate



Ebony



Rose



Lavanda



Purple



Coral



Red



Yellow



Mostaza



Forest



Lima



Safria



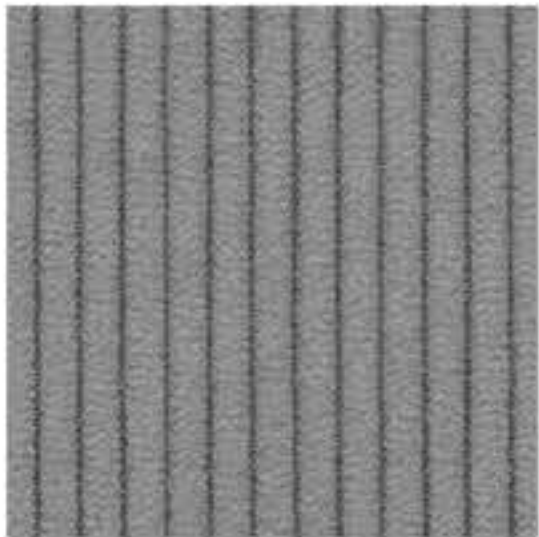
Sky



Navy



Ocean



Ash



Anthracite



Black

SCALA

FABRIC TYPE	COMPOSITION	DURABILITY	LIGHTFASTNESS	PILLING	FEATURES	FIRE TESTS
Corduroy	100% Polyester	80,000 Martindale	5	3 - 4	Anti-Stain	BS 5852 part 1 - Cigarette Test PASS EN 1021-1 - Cigarette Test PASS CA Tech. Bull. 117:2013 / NFPA 260 - Cigarette Test PASS



BLUEWORLD[®]
HUMAN CARE TECHNOLOGY



STANDARD
100
9342CIT
CITEVE

Caution: the displayed colours, due to technical matters, are approximate and may differ from the original



Pearl



Ivory



Toffee



Pink



Marsala



Deep Purple



Mostaza



Mud



Truffle



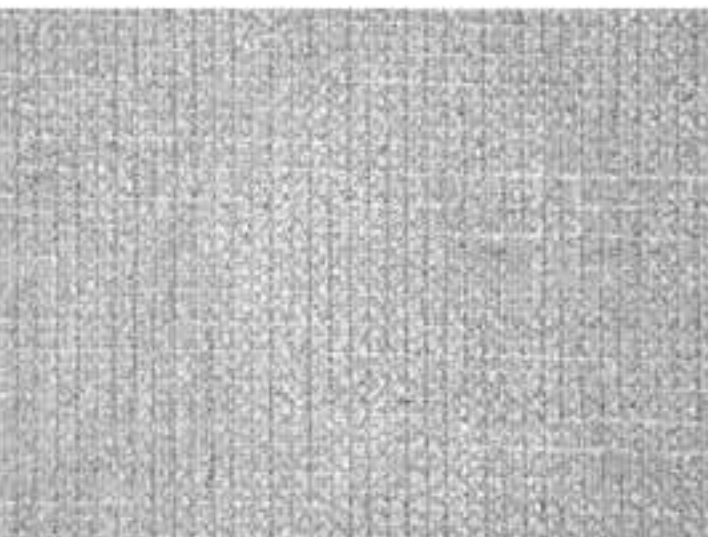
Green



Forest



Chocolate



Cement



Fog



Ocean



Taupe



Anthracite



Black

TRIBU

FABRIC TYPE	COMPOSITION	DURABILITY	LIGHTFASTNESS	PILLING	FEATURES	FIRE TESTS
Chenille	100% Polyester	35,000 Martindale	5	4	Anti-Stain	BS 5852 part 1 - Cigarette Test PASS EN 1021-1 - Cigarette Test PASS CA Tech. Bull. 117:2013 / NFPA 260 - Cigarette Test PASS



BLUEWORLD[®]
HUMAN CARE TECHNOLOGY



STANDARD
100
9342CIT
CITEVE

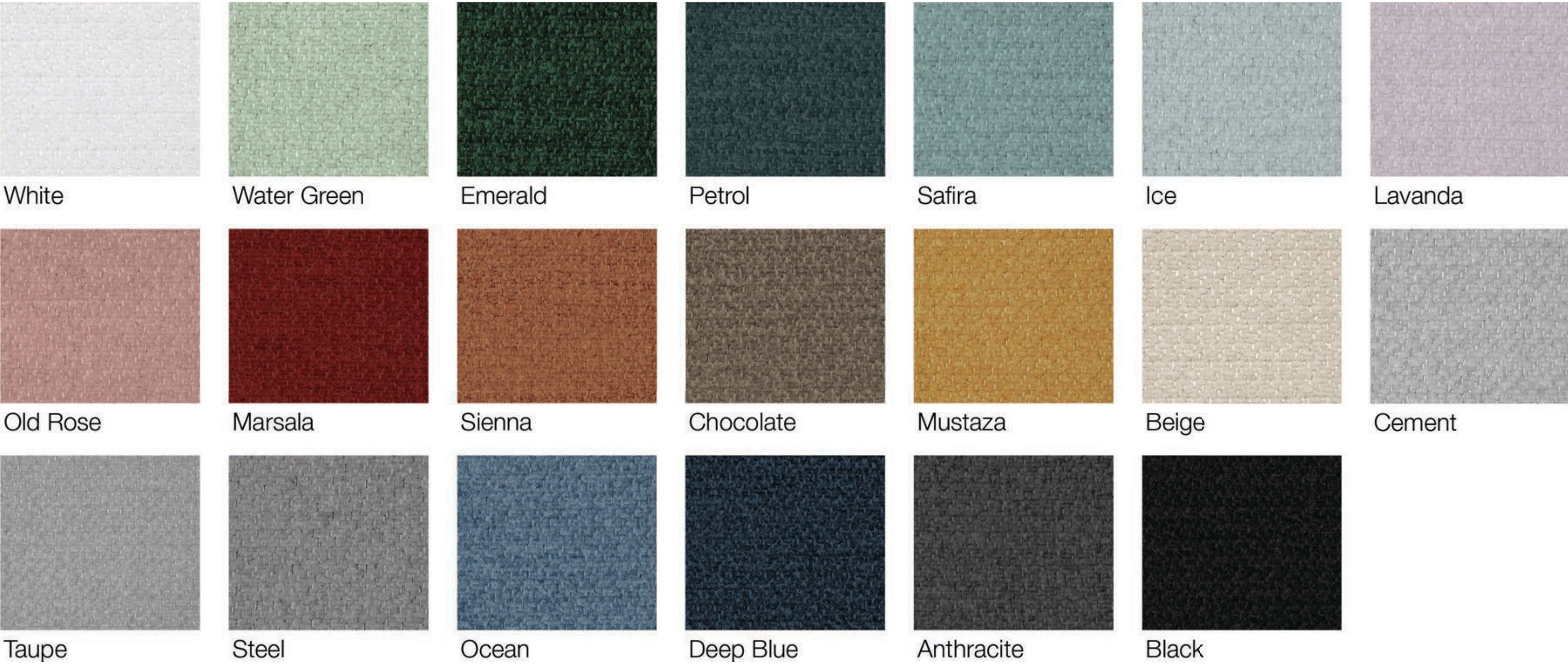
Caution: the displayed colours, due to technical matters, are approximate and may differ from the original



VELVETEEN

FABRIC TYPE	COMPOSITION	DURABILITY	LIGHTFASTNESS	PILLING
Velvet - Matte Sheen	100% Polyester	60,000 Martindale	4	4

Caution: the displayed colours, due to technical matters, are approximate and may differ from the original



VIENNA

FABRIC TYPE	COMPOSITION	DURABILITY	LIGHTFASTNESS	PILLING	FEATURES	FIRE TESTS
Chenille	100% Polyester	65,000 Martindale	5	4	Anti-Stain	BS 5852 part 1 - Cigarette Test PASS EN 1021-1 - Cigarette Test PASS CA Tech. Bull. 117:2013 / NFPA 260 - Cigarette Test PASS



Caution: the displayed colours, due to technical matters, are approximate and may differ from the original



info@modern-approach.com