

UPHOLSTERY OPTIONS

BELLINI COLLECTION



APOLLO

FABRIC TYPE	COMPOSITION	DURABILITY	LIGHTFASTNESS	PILLING	FEATURES	FIRE TESTS
Chenille	100% Polyester	100,000 Martindale	4 - 5	4 - 5	Anti-Stain Liquid Repellent	BS 5852 part 1 - Cigarette Test PASS EN 1021-1 - Cigarette Test PASS CA Tech. Bull. 117:2013 / NFPA 260 - Cigarette Test PASS



BLUEWORLD[®]
HUMAN CARE TECHNOLOGY



STANDARD
100
9342CIT
CITEVE

Caution: the displayed colours, due to technical matters, are approximate and may differ from the original



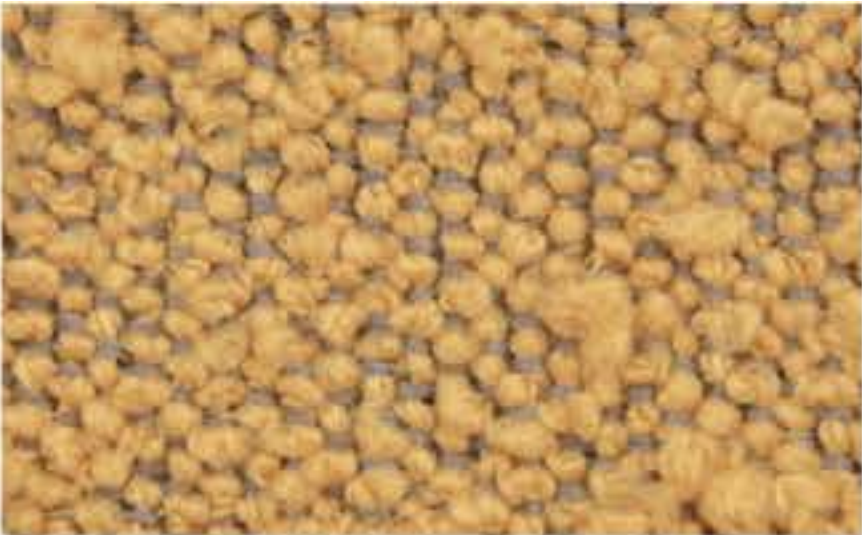
Nata



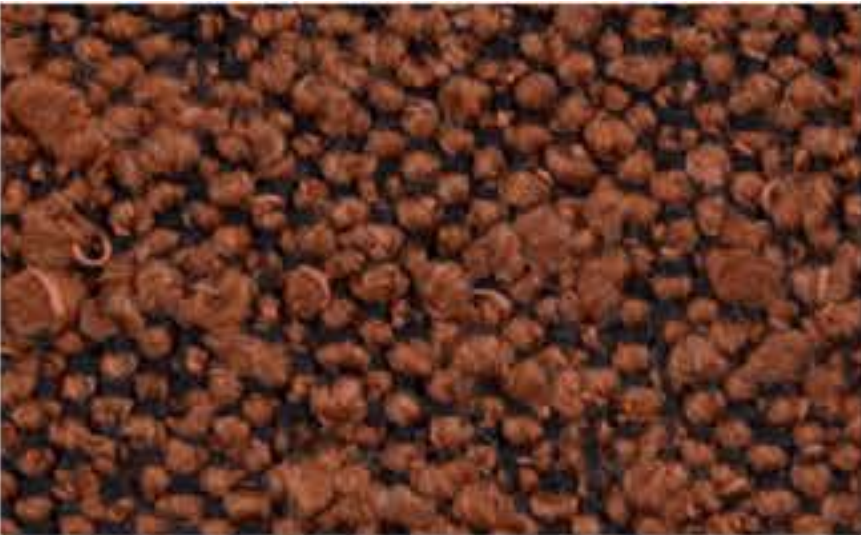
Pearl



Champagne



Mostaza



Brick



Pink



Toffee



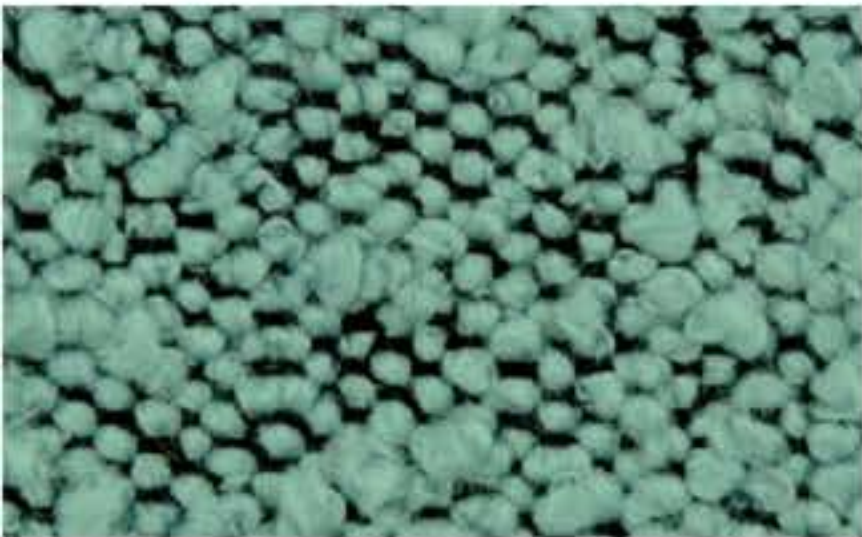
Taupe



Mouse



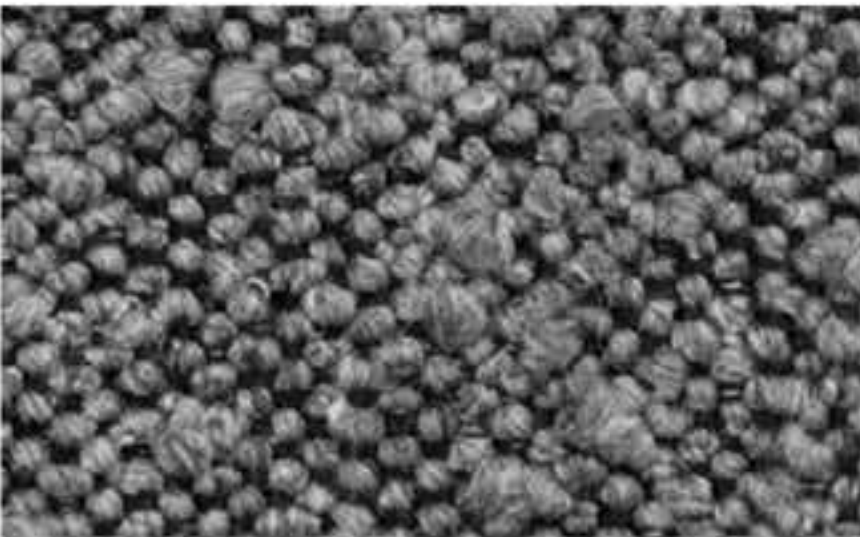
Olive Green



Safira



Atlantic



Graphite



Black

ASCOT

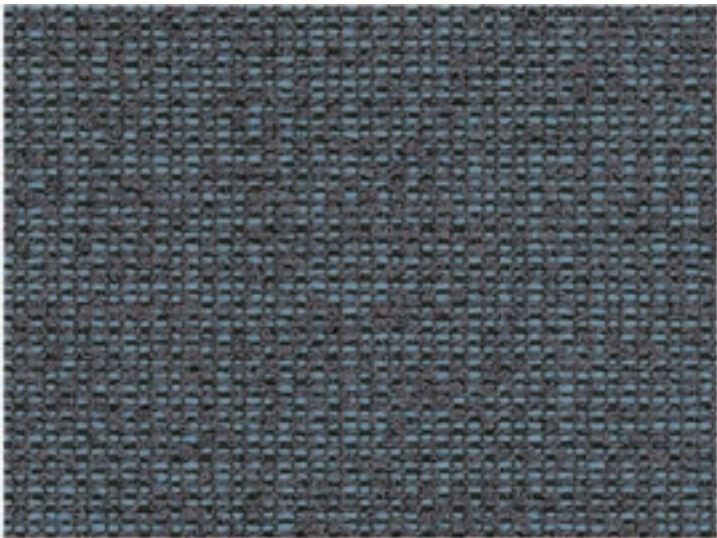
FABRIC TYPE	COMPOSITION	DURABILITY	LIGHTFASTNESS	PILLING	FIRE TESTS
Bouclé	100% Polyester	80,000 Martindale	5	4	BS 5852 part 1 - Cigarette Test PASS EN 1021-1 - Cigarette Test PASS CA Tech. Bull. 117:2013 / NFPA 260 - Cigarette Test PASS



Caution: the displayed colours, due to technical matters, are approximate and may differ from the original



Saturation



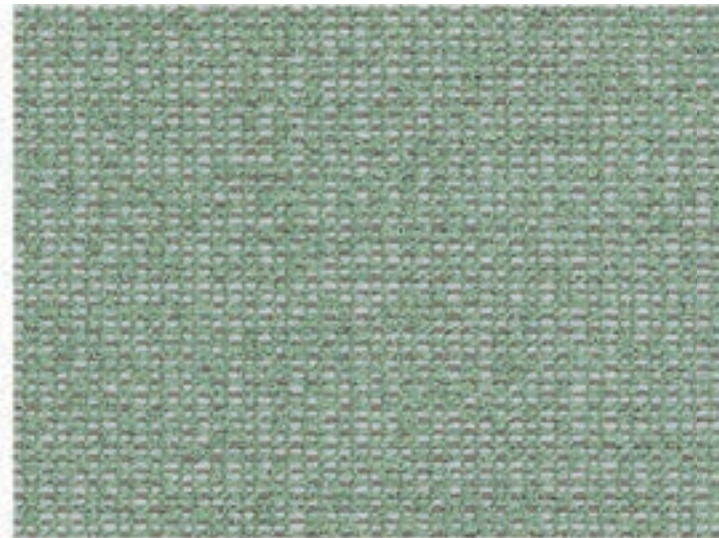
Tempera



Purity



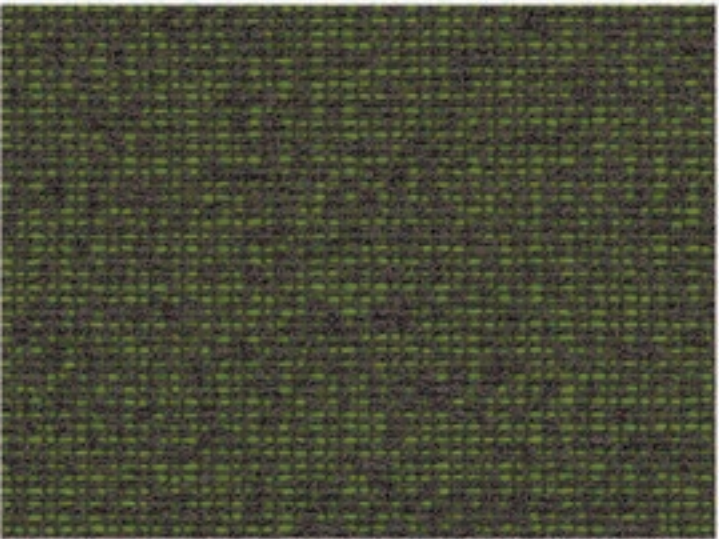
Prism



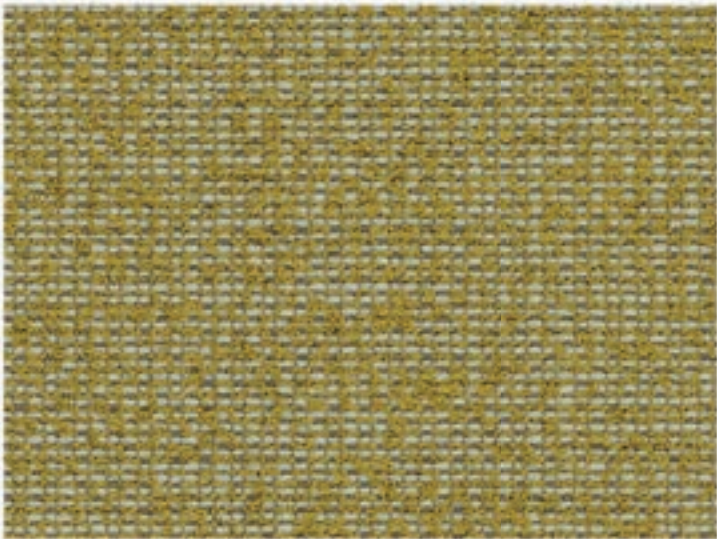
Gamut



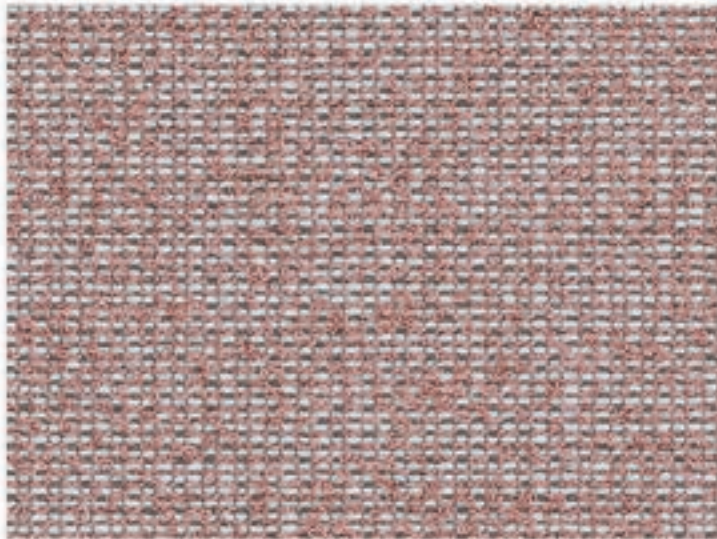
Tone



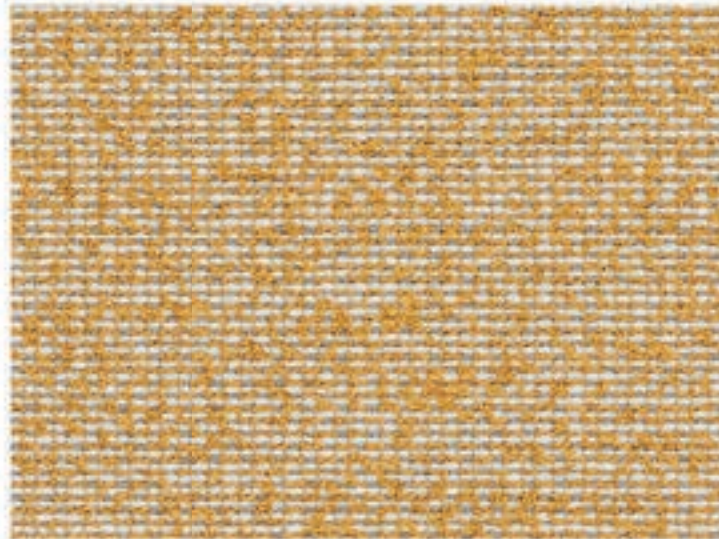
Goethe



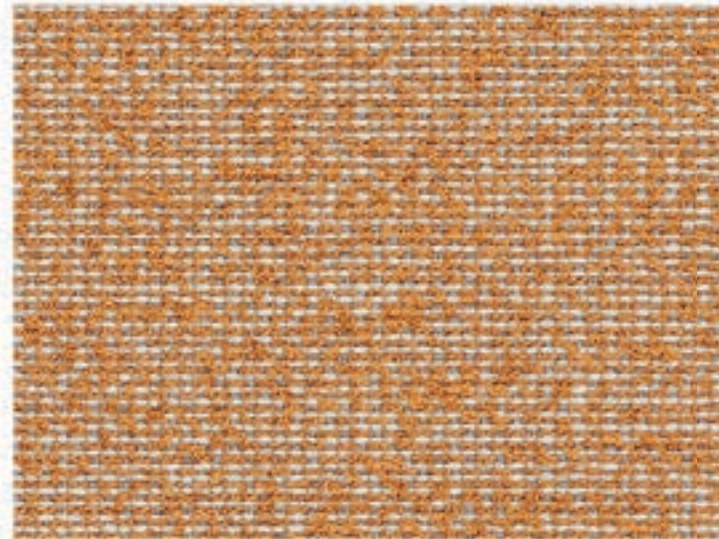
Hue



Pigment



Glow



Newton



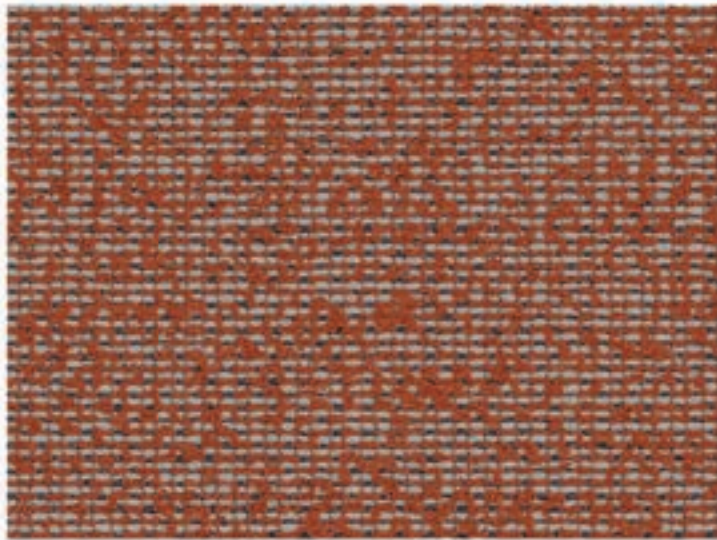
Dark



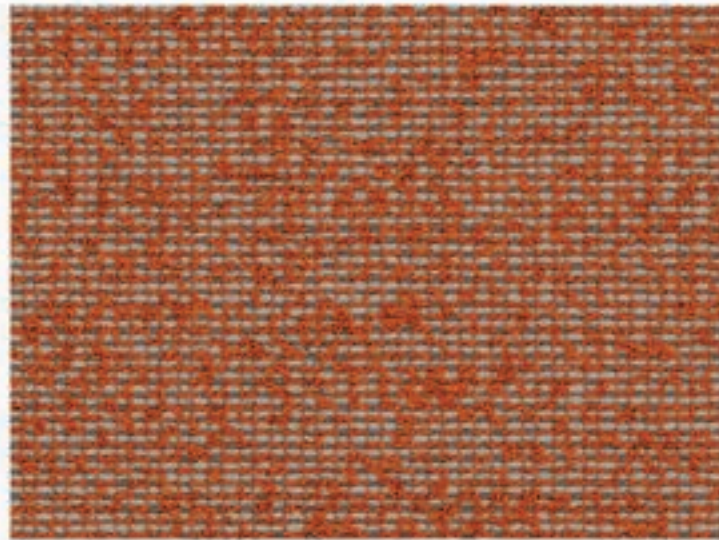
Hint



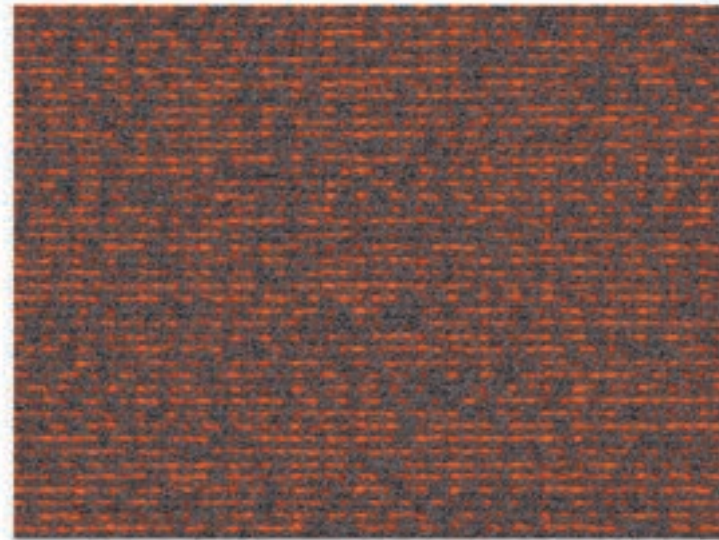
Trace



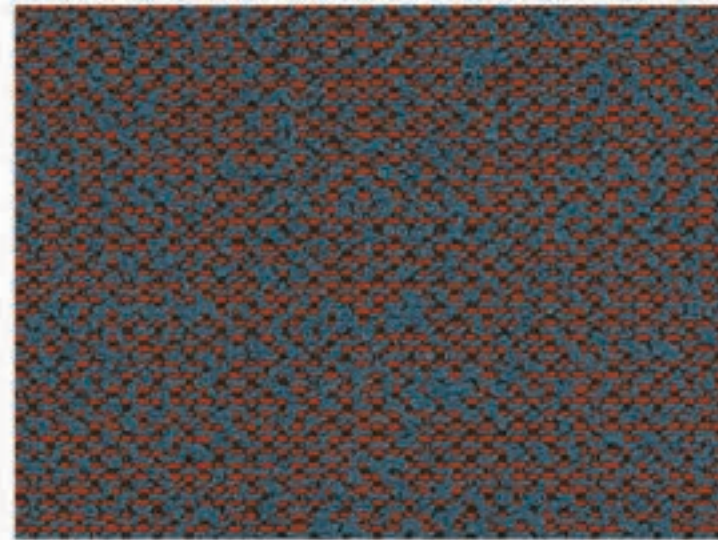
Render



Diad



Radiance



Harlequin

AUCKLAND
By Vescom



FABRIC TYPE	COMPOSITION	DURABILITY	LIGHTFASTNESS	PILLING	FIRE TESTS
Bouclé	76% Recycled Polyester FR 24% Polyester FR	60,000 Martindale	6	4	EN 1021/1-2, Pass; BS 5852, Crib 5; NF P 92/503-507 or NF D 60-013, M1 DIN 4102, B1 Cal TB 117-2013, section 1, Pass; IMO 2010 FTP part 8, Pass; NFPA 260, Class 1

Caution: the displayed colours, due to technical matters, are approximate and may differ from the original



BALTIC

FABRIC TYPE	COMPOSITION	DURABILITY	LIGHTFASTNESS	PILLING	FEATURES	FIRE TESTS
Chenille	100% Polyester	35,000 Martindale	5	4	Anti-Stain	BS 5852 part 1 - Cigarette Test PASS EN 1021-1 - Cigarette Test PASS CA Tech. Bull. 117:2013 / NFPA 260 - Cigarette Test PASS



BLUEWORLD®
HUMAN CARE TECHNOLOGY



STANDARD
100
9342CIT
CITEVE

Caution: the displayed colours, due to technical matters, are approximate and may differ from the original



White



Sand



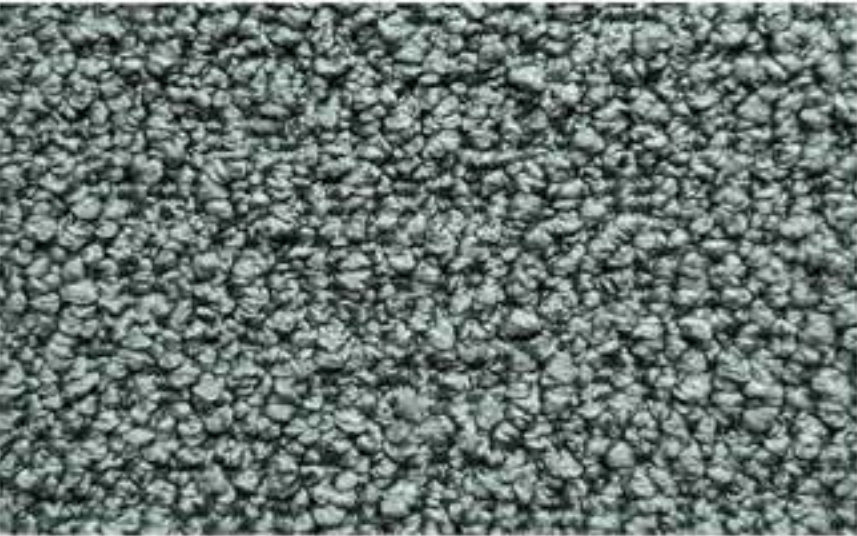
Pale Rose



Paprika



Cinnamon



Aqua



Pine



Hunter



Dark Forest



Fossil



Pebble



Dove



Stone



Shadow



Charcoal

BOUCLÉ

FABRIC TYPE	COMPOSITION	DURABILITY	LIGHTFASTNESS	PILLING
Bouclé	100% Polyester	80,000 Martindale	3	4

Caution: the displayed colours, due to technical matters, are approximate and may differ from the original



Pearl



Beige



Lion



Fog



Stone



Elephant



Taupe



Ebony



Sand



Light Violet



Pink



Salmon



Cuoio



Terracotta



Marsala



Bordeaux



Mostaza



Olive



Forest



Deep Green



Safira



Dark Blue



Ocean



Deep Blue

CASINO

FABRIC TYPE	COMPOSITION	DURABILITY	LIGHTFASTNESS	PILLING	FEATURES	FIRE TESTS
Velvet - Matte Finish	100% Polyester	100,000 Martindale	4 - 5	4 - 5	Anti-Stain Pet Friendly	BS 5852 part 1 - Cigarette Test PASS EN 1021-1 - Cigarette Test PASS CA Tech. Bull. 117:2013 / NFPA 260 - Cigarette Test PASS

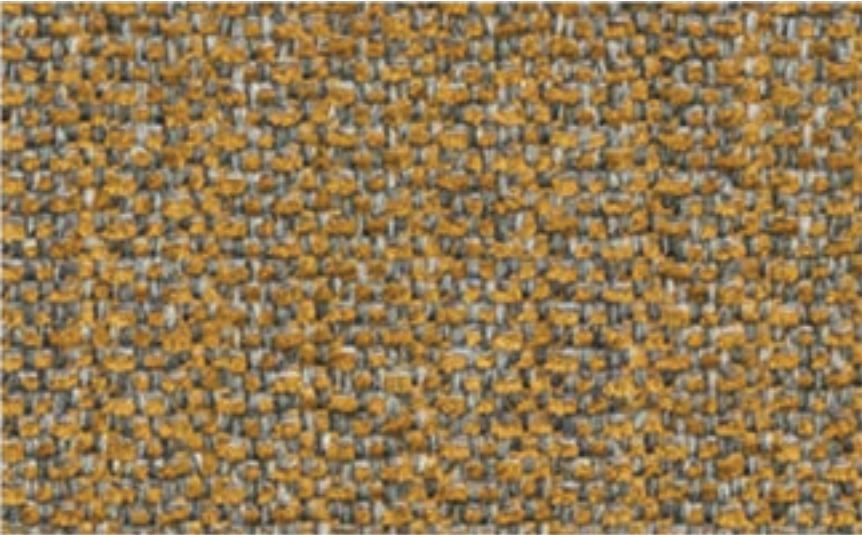


BLUEWORLD[®]
HUMAN CARE TECHNOLOGY



STANDARD
100
9342CIT
CITEVE

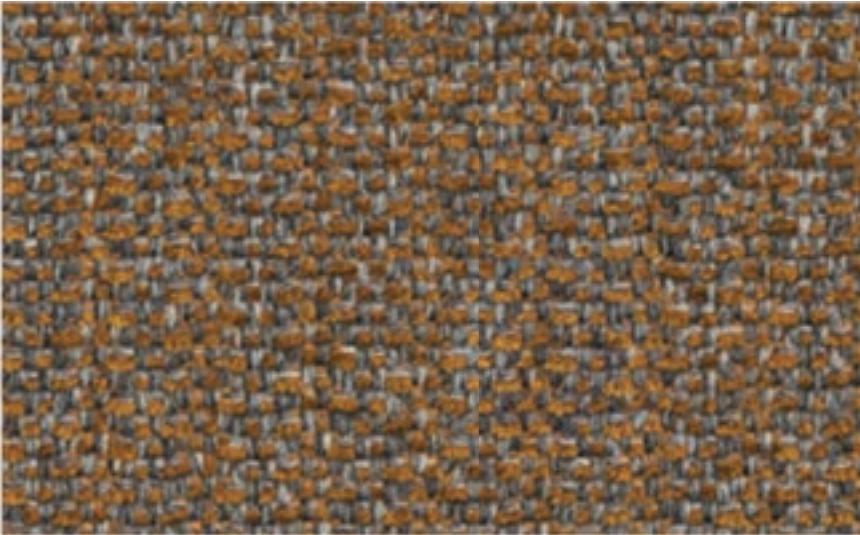
Caution: the displayed colours, due to technical matters, are approximate and may differ from the original



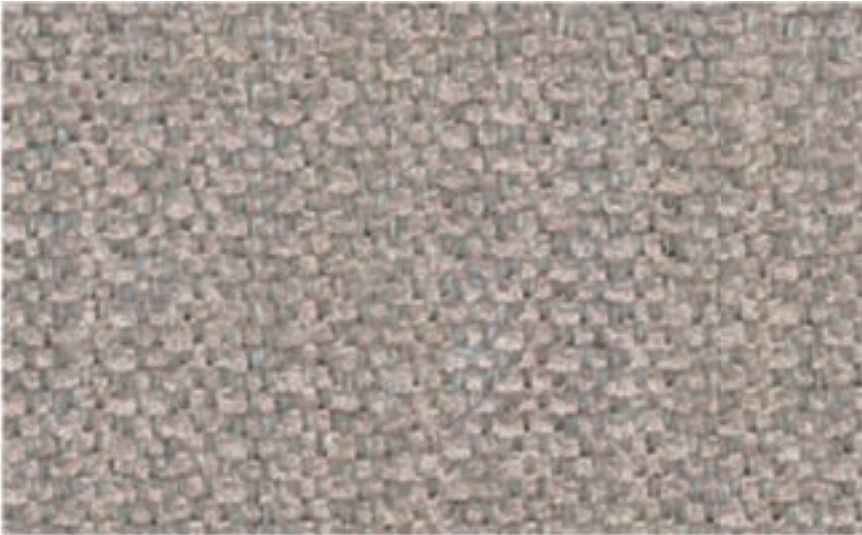
Fortress



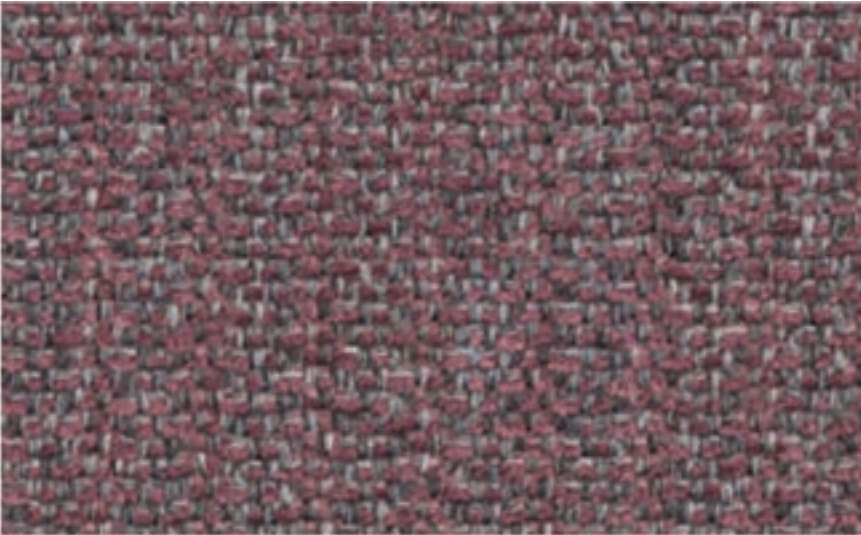
Beacon



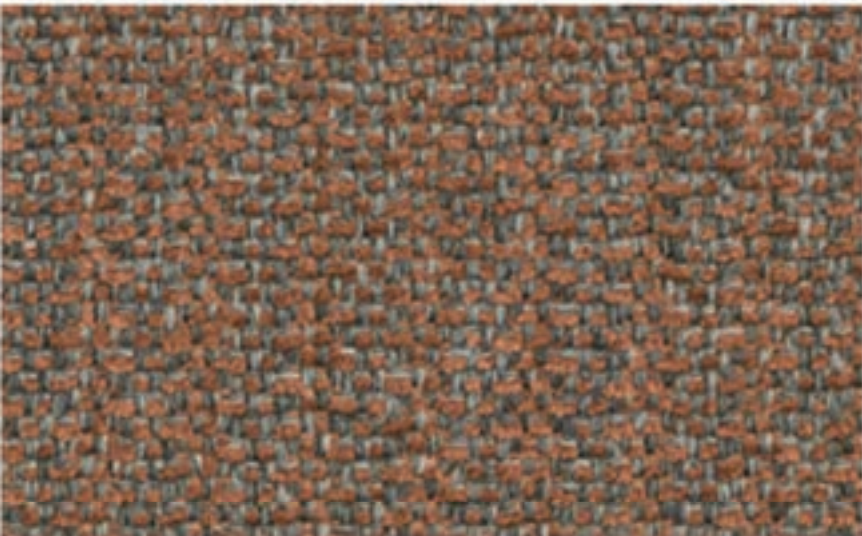
Redoubt



Drawbridge



Augusta



Hideaway



Hamilton



Resistance



Stillwater



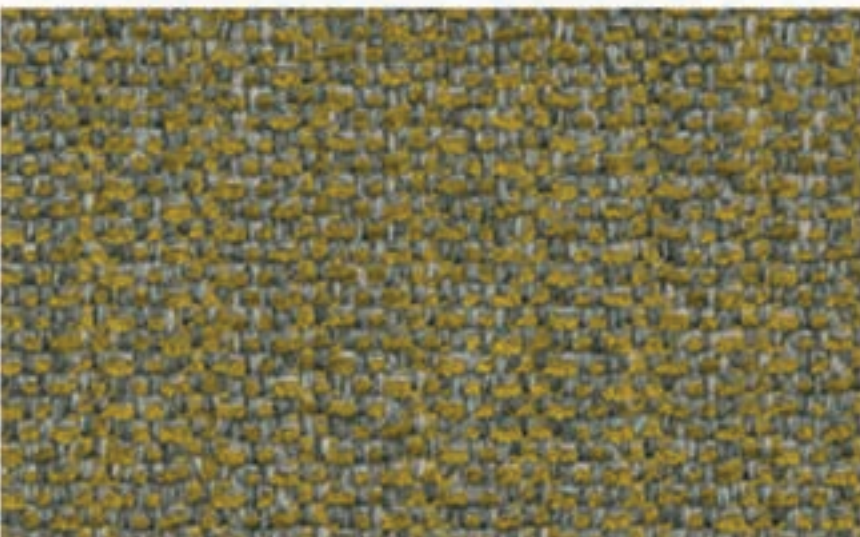
Confine



Craven



Ralstone



Bingham



Abide

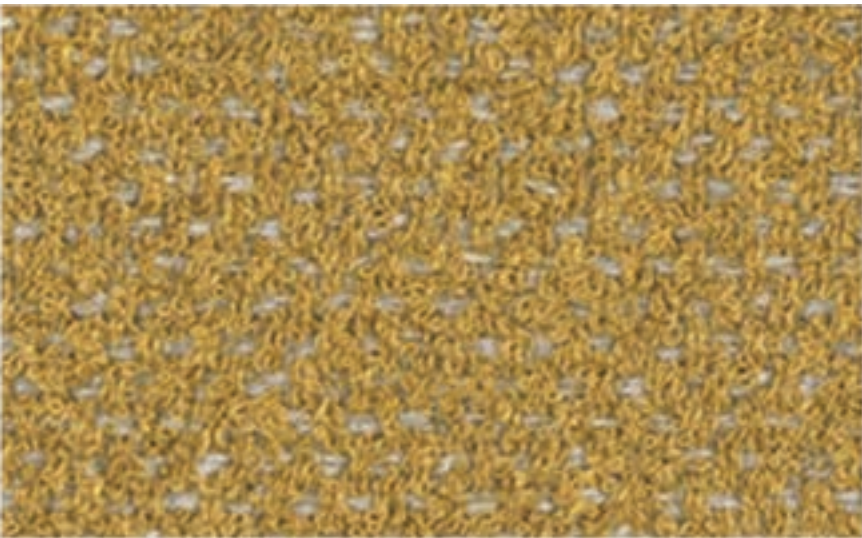
DIKSON

By Vescom

FABRIC TYPE	COMPOSITION	DURABILITY	LIGHTFASTNESS	PILLING	FIRE TESTS
Chenille	100% Polyester	100,000 Martindale	6	4 - 5	EN 1021/1-2, Pass; BS 5852, Crib 5; NF P 92/503-507 or NF D 60-013, M1 DIN 4102, B1 Cal TB 117-2013, section 1, Pass; IMO 2010 FTP part 8, Pass; NFPA 260, Class 1



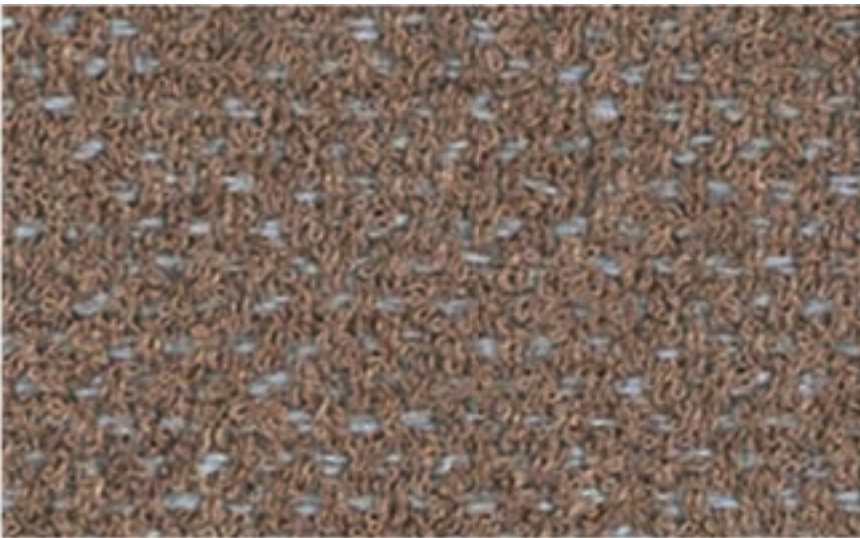
Caution: the displayed colours, due to technical matters, are approximate and may differ from the original



Caponex



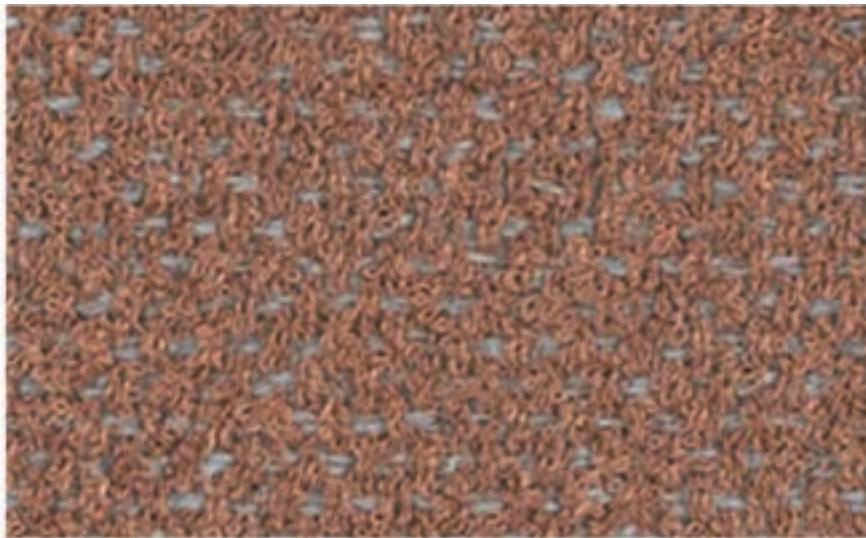
Palenque



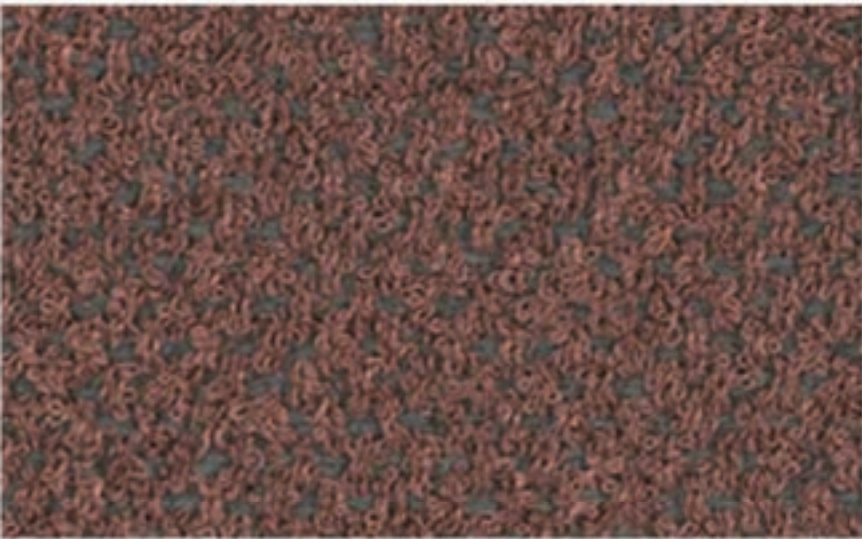
Gorkha



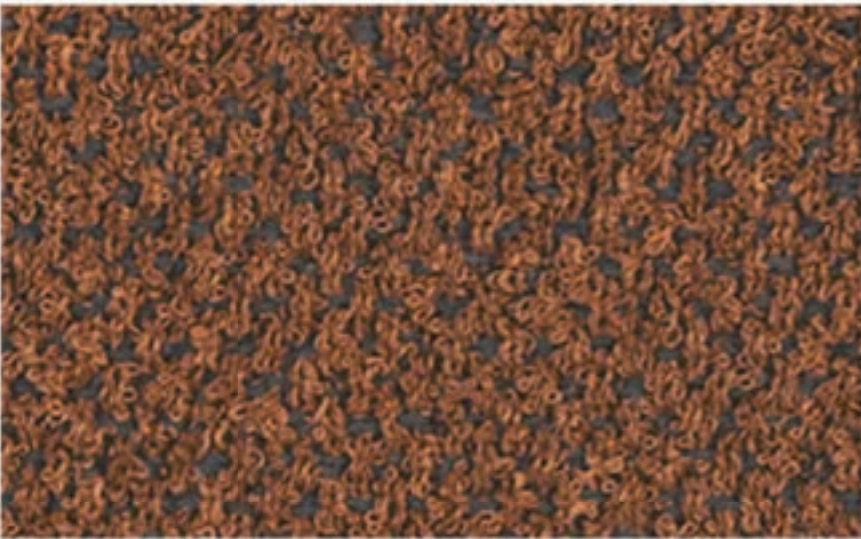
Petra



Meteora



Zion



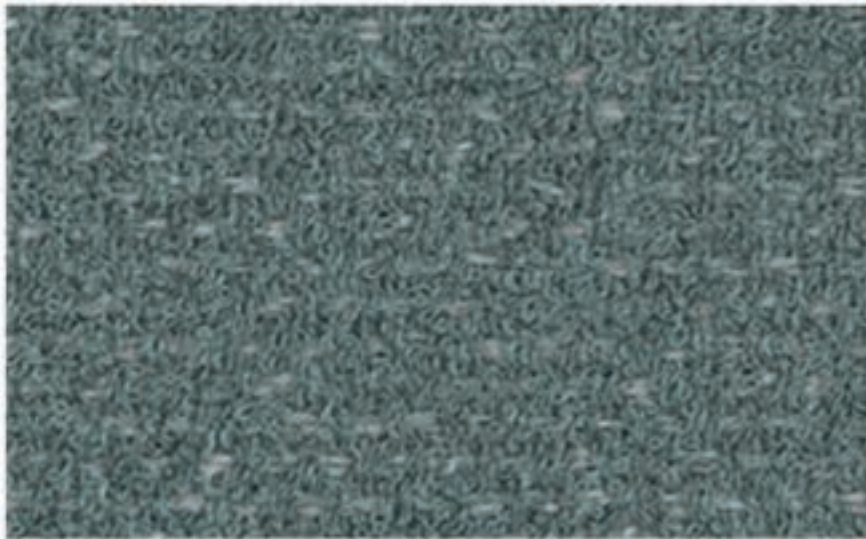
Marrakech



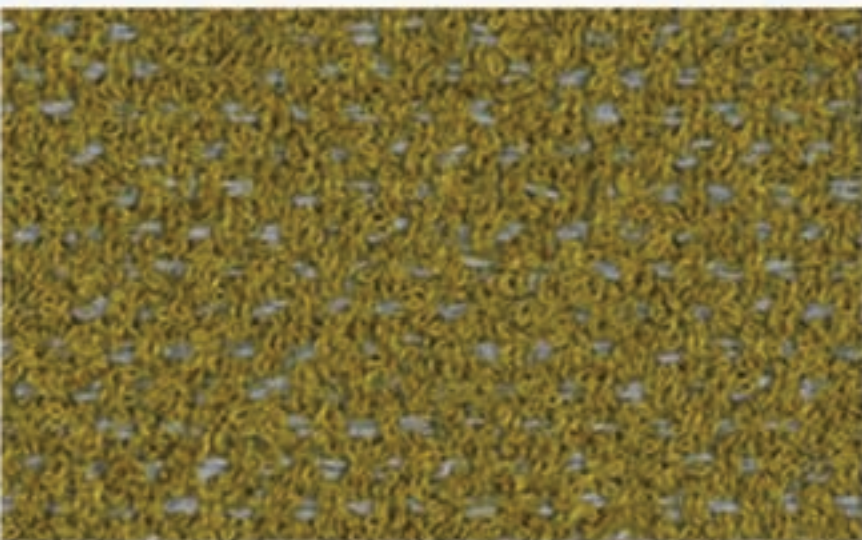
Dolomites



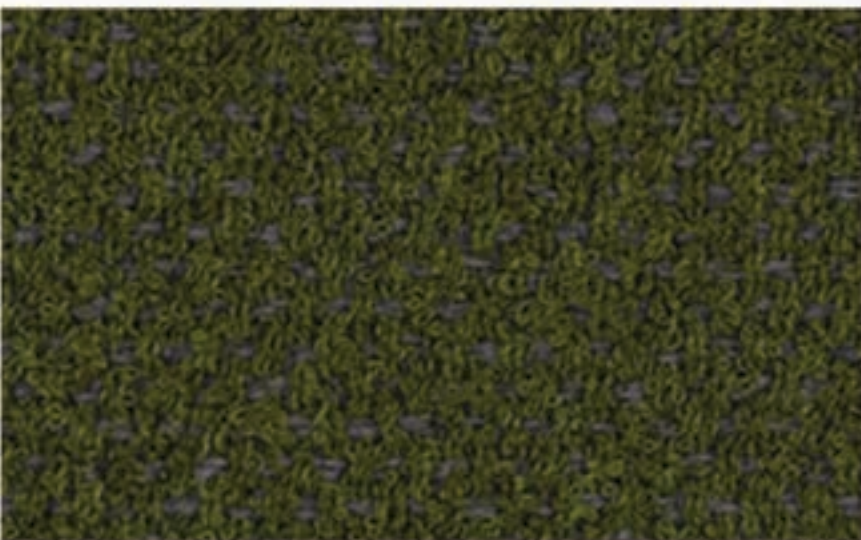
Halong



Molokai



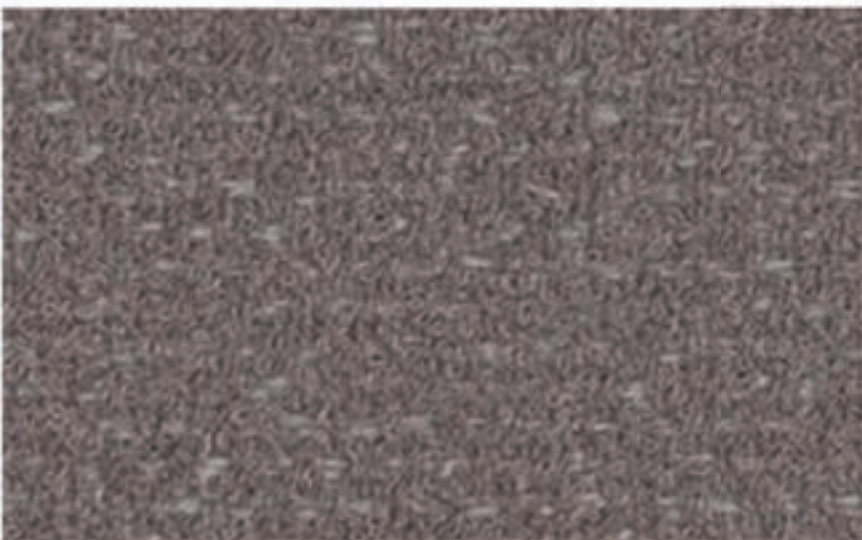
Yosemite



Patagonia



Rainer



Calabria



Malham

FOSTER

By Vescom

FABRIC TYPE	COMPOSITION	DURABILITY	LIGHTFASTNESS	PILLING	FIRE TESTS
Bouclé	97% Recycled Polyester FR 3% Polyester FR	60,000 Martindale	6	4	EN 1021/1-2, Pass; BS 5852, Crib 5; NF P 92/503-507 or NF D 60-013, M1 DIN 4102, B1 Cal TB 117-2013, section 1, Pass; IMO 2010 FTP part 8, Pass; NFPA 260, Class 1



Caution: the displayed colours, due to technical matters, are approximate and may differ from the original



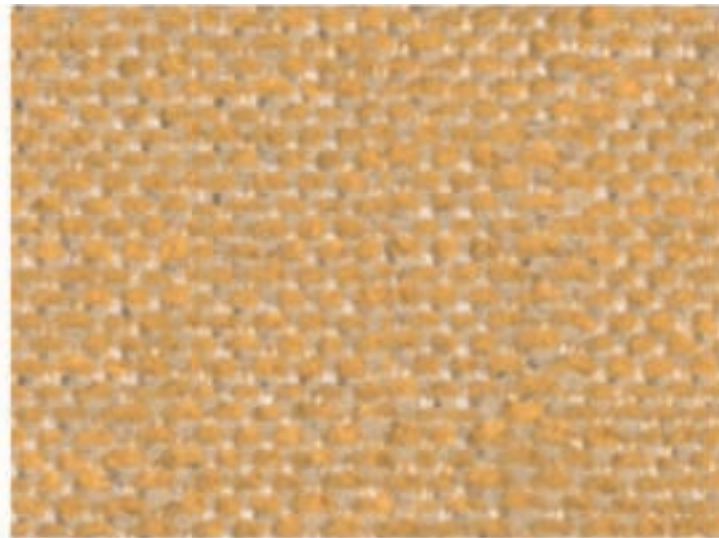
Vit



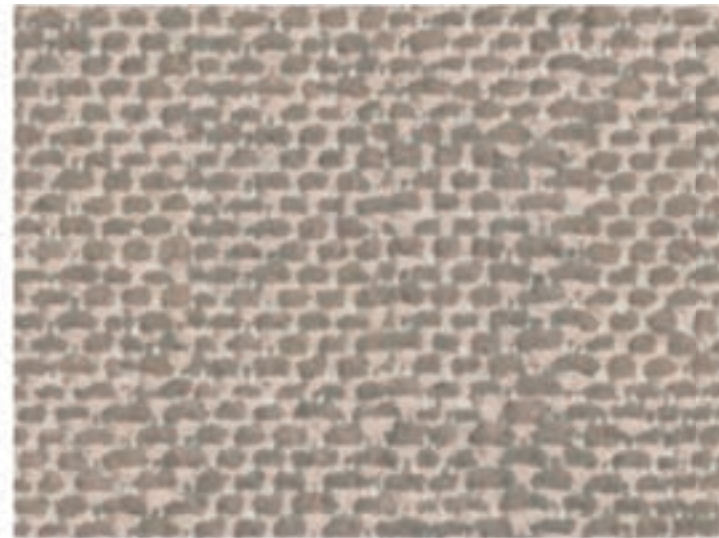
Clan



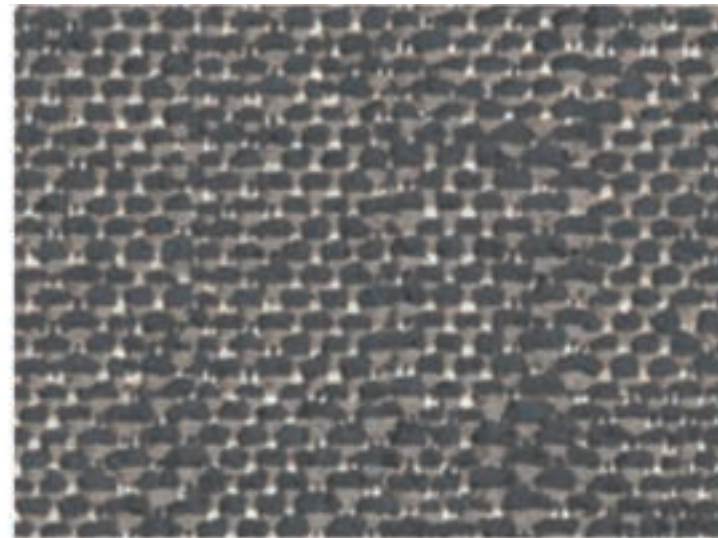
Shetland



Lora



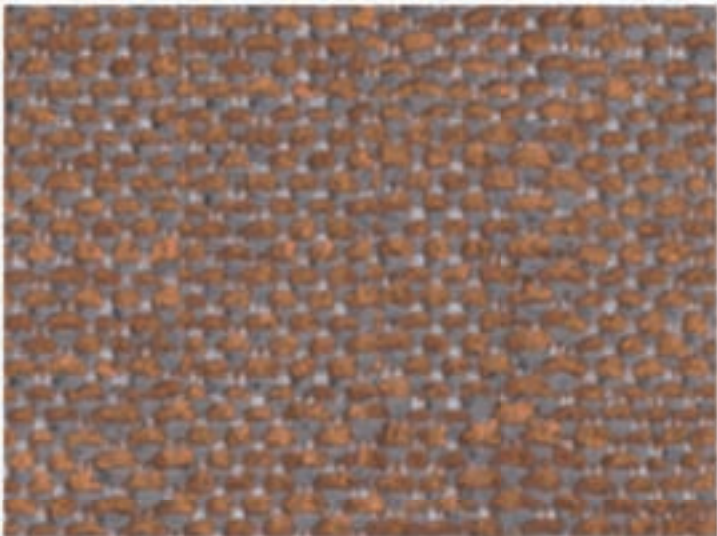
Hillswick



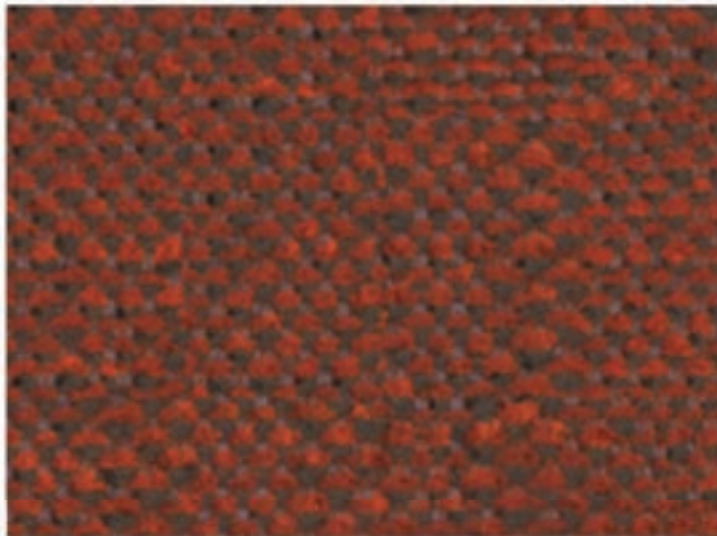
Dolphin



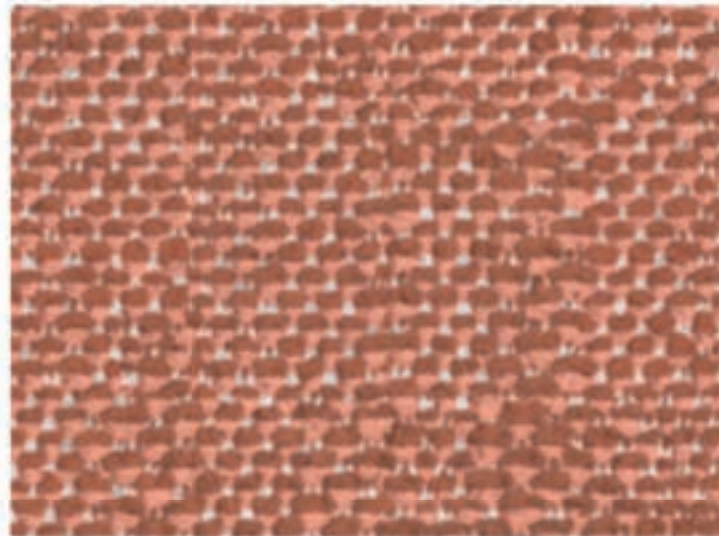
Lomond



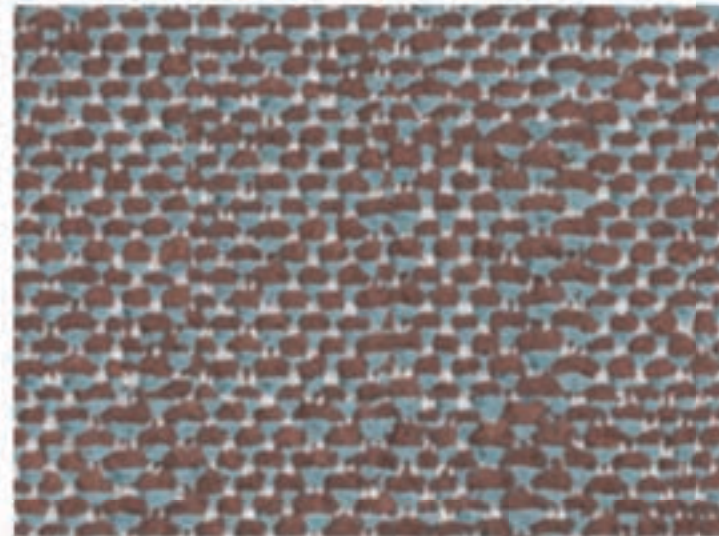
Austen



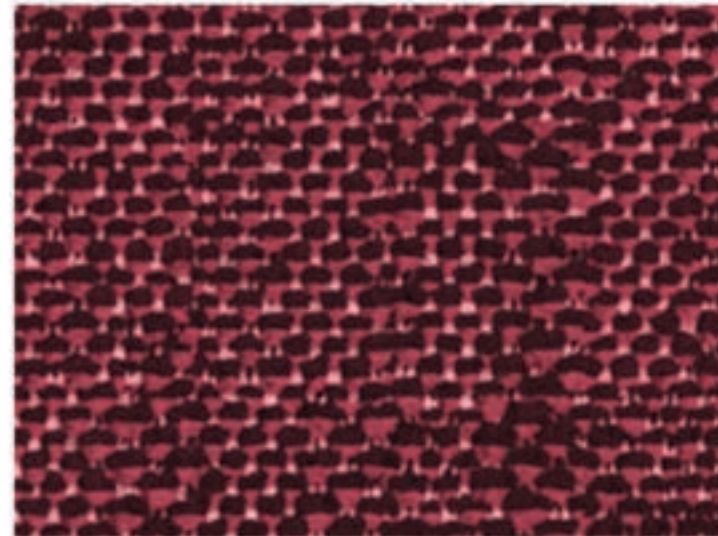
Pitlochry



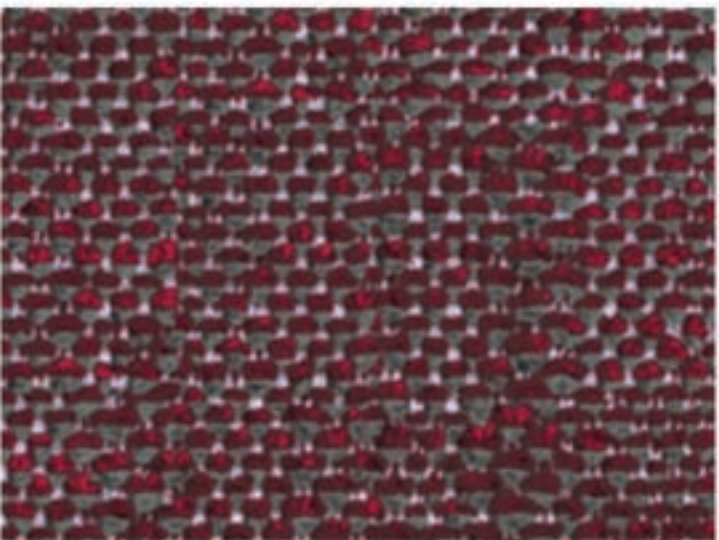
Maree



Denny



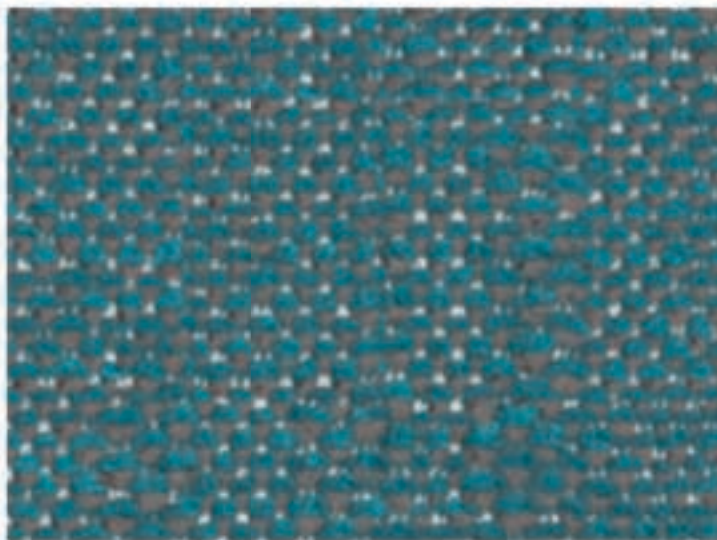
Tummel



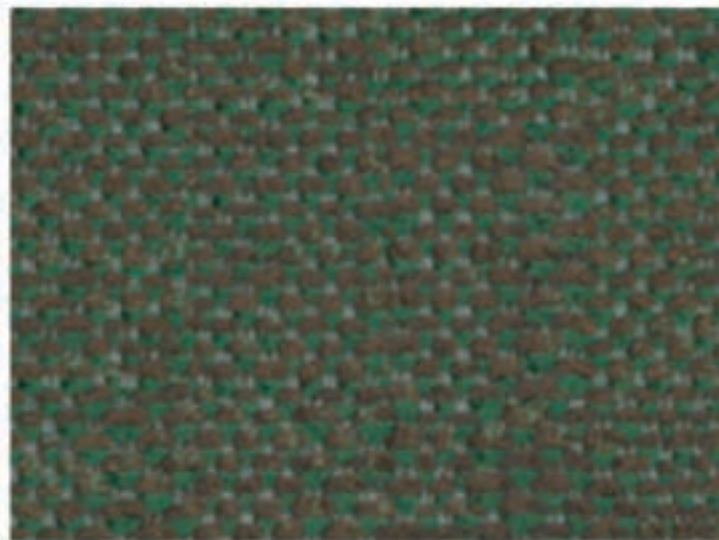
Lossie



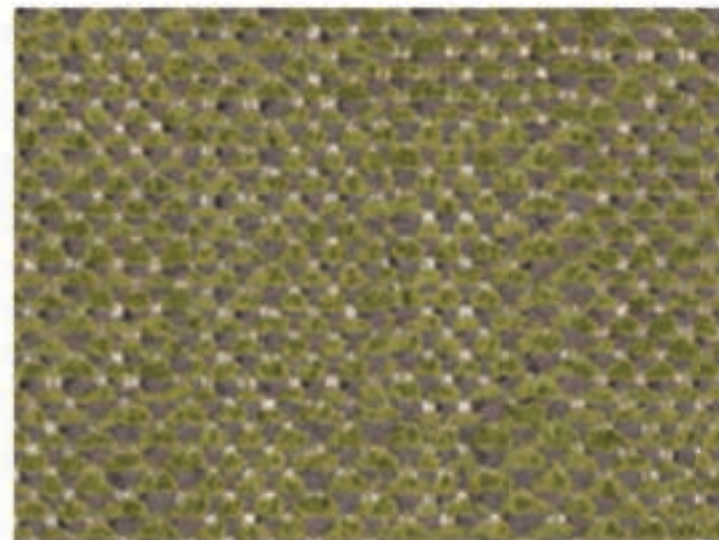
Adriatic



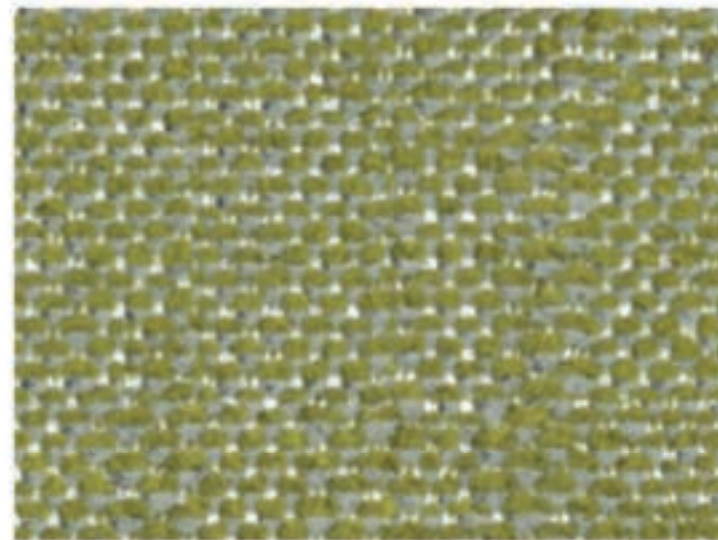
Inverness



Carron



Staffa



Fair Isle

FUGA

By Vescom



Caution: the displayed colours, due to technical matters, are approximate and may differ from the original

FABRIC TYPE	COMPOSITION	DURABILITY	LIGHTFASTNESS	PILLING	FIRE TESTS
Chenille	79% Recycled Polyester FR 21% Polyester FR	70,000 Martindale	6 - 7	4 - 5	EN 1021/1-2, Pass; BS 5852, Crib 5; NF P 92/503-507 or NF D 60-013, M1 DIN 4102, B1 Cal TB 117-2013, section 1, Pass; IMO 2010 FTP part 8, Pass; NFPA 260, Class 1



HARALD

FABRIC TYPE	COMPOSITION	DURABILITY	LIGHTFASTNESS	PILLING	FEATURES	FIRE TESTS
Velvet - Soft Sheen	100% Cotton	50,000 Martindale	3	5	Liquid Repellent	BS 5852 part 1 - Cigarette Test PASS EN 1021-1 - Cigarette Test PASS CA Tech. Bull. 117:2013 / NFPA 260 - Cigarette Test PASS

Caution: the displayed colours, due to technical matters, are approximate and may differ from the original



White



Cream



Light Grey



Lavanda



Orange



Bordeaux



Trufa



Beige



Sand



Citric



Green



Camel



Brown



Chocolate



Water Green



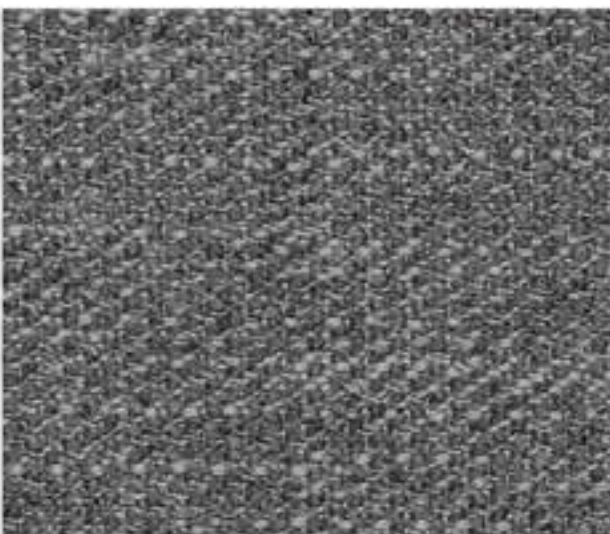
Turquoise



Blue



Ocean



Steel



Dark Grey



Black

LONDON

FABRIC TYPE	COMPOSITION	DURABILITY	LIGHTFASTNESS	PILLING	FIRE TESTS
Flat Weave	100% Polyester	80,000 Martindale	5	4	BS 5852 part 1 - Cigarette Test PASS EN 1021-1 - Cigarette Test PASS CA Tech. Bull. 117:2013 / NFPA 260 - Cigarette Test PASS



BLUEWORLD[®]
HUMAN CARE TECHNOLOGY



STANDARD
100
9342CIT
CITEVE

Caution: the displayed colours, due to technical matters, are approximate and may differ from the original



Pearl



Sand



Toffee



Truffle



Coral



Brick



Gold



Cuoio



Terra



Chocolate



Moss



Emerald



Forest



Ash



Black

MACAU

FABRIC TYPE	COMPOSITION	DURABILITY	LIGHTFASTNESS	PILLING	FEATURES	FIRE TESTS
Velvet - Soft Sheen	100% Polyester	90,000 Martindale	5	4 - 5	Anti-Stain Pet Friendly	BS 5852 part 1 - Cigarette Test PASS EN 1021-1 - Cigarette Test PASS CA Tech. Bull. 117:2013 / NFPA 260 - Cigarette Test PASS



BLUEWORLD[®]
HUMAN CARE TECHNOLOGY



STANDARD
100
9342CIT
CITEVE

Caution: the displayed colours, due to technical matters, are approximate and may differ from the original



Pearl



Ivory



Toffee



Pink



Marsala



Deep Purple



Mostaza



Mud



Truffle



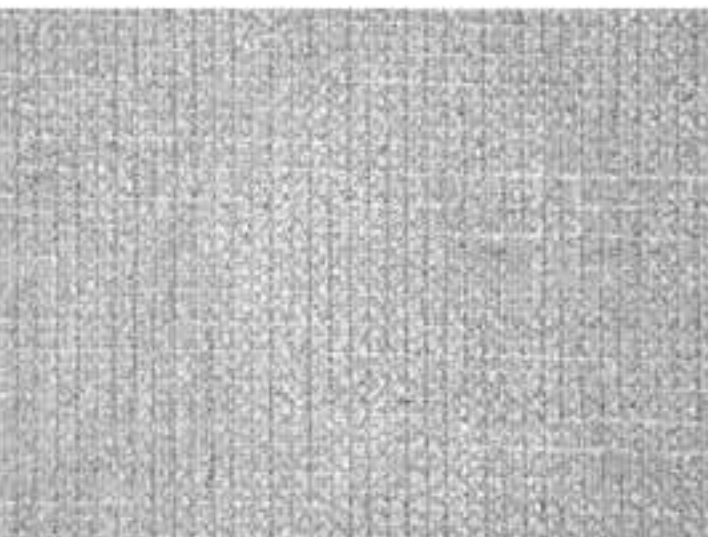
Green



Forest



Chocolate



Cement



Fog



Ocean



Taupe



Anthracite



Black

TRIBU

FABRIC TYPE	COMPOSITION	DURABILITY	LIGHTFASTNESS	PILLING	FEATURES	FIRE TESTS
Chenille	100% Polyester	35,000 Martindale	5	4	Anti-Stain	BS 5852 part 1 - Cigarette Test PASS EN 1021-1 - Cigarette Test PASS CA Tech. Bull. 117:2013 / NFPA 260 - Cigarette Test PASS

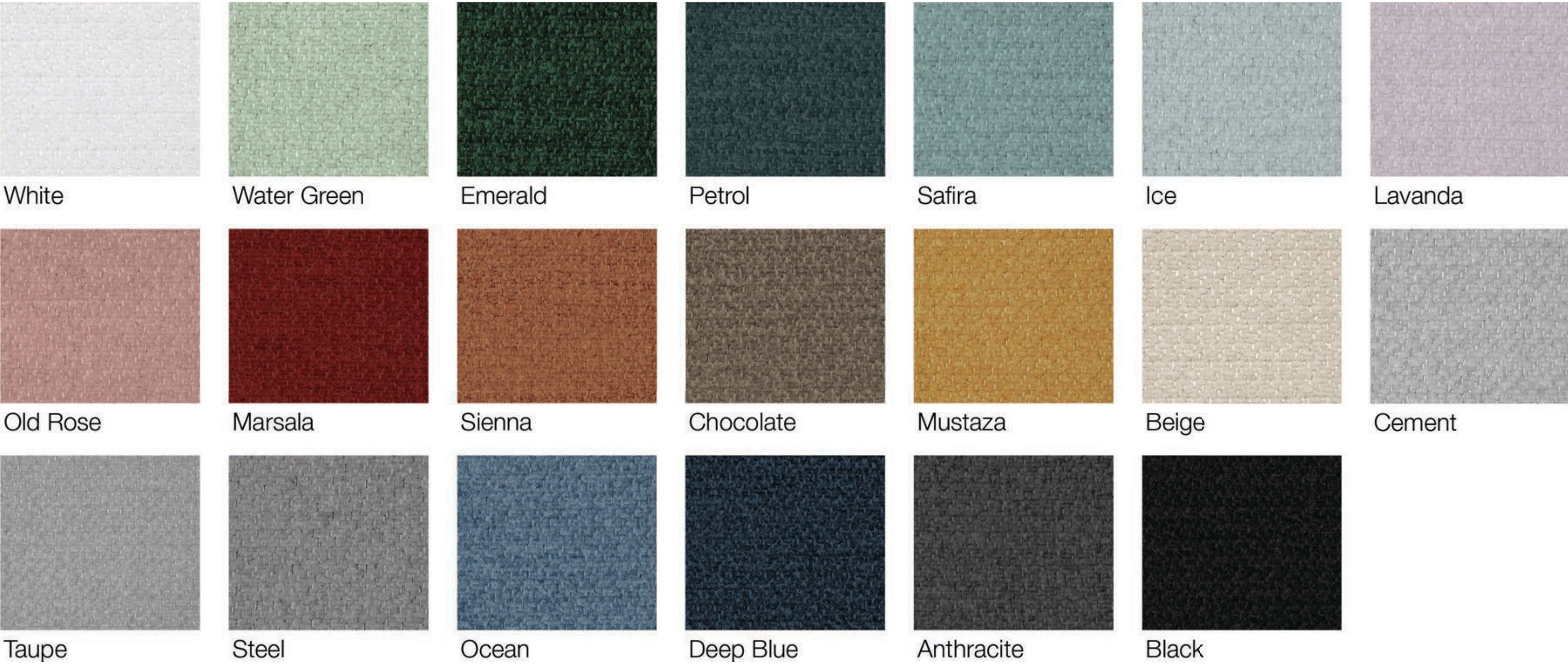


BLUEWORLD[®]
HUMAN CARE TECHNOLOGY



STANDARD
100
9342CIT
CITEVE

Caution: the displayed colours, due to technical matters, are approximate and may differ from the original



VIENNA

FABRIC TYPE	COMPOSITION	DURABILITY	LIGHTFASTNESS	PILLING	FEATURES	FIRE TESTS
Chenille	100% Polyester	65,000 Martindale	5	4	Anti-Stain	BS 5852 part 1 - Cigarette Test PASS EN 1021-1 - Cigarette Test PASS CA Tech. Bull. 117:2013 / NFPA 260 - Cigarette Test PASS



BLUEWORLD[®]
HUMAN CARE TECHNOLOGY



STANDARD
100
9342CIT
CITEVE

Caution: the displayed colours, due to technical matters, are approximate and may differ from the original



Cream



Silver



Almond



Elephant



Ebony



Taupe



Camel



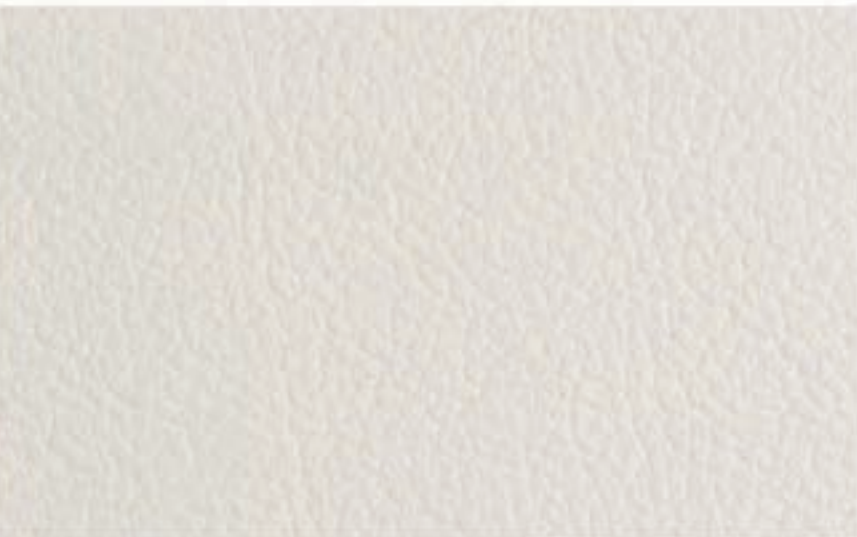
Tabacco



Avocat



Forest



Milk



Cement



Ash



Anthracite



Black

FLORIDA

LEATHER TYPE	AVERAGE SKIN THICKNESS	RAWHIDE	PREPARATION	FIRE TESTS
Corrected Leather	0.8 - 1.0 mm	Brazilian Bovine	Corrected and Embossed Grain Protective Top Coat, Soft Handle and Silky Matte Finish	BS 5852:1979 BS EN 1021-1-2:2006

Caution: the displayed colours, due to technical matters, are approximate and may differ from the original



White



Lamb



Iceberg



Mouton



Khaki



Earth



Cement



Forest



Woody



Bourgandy



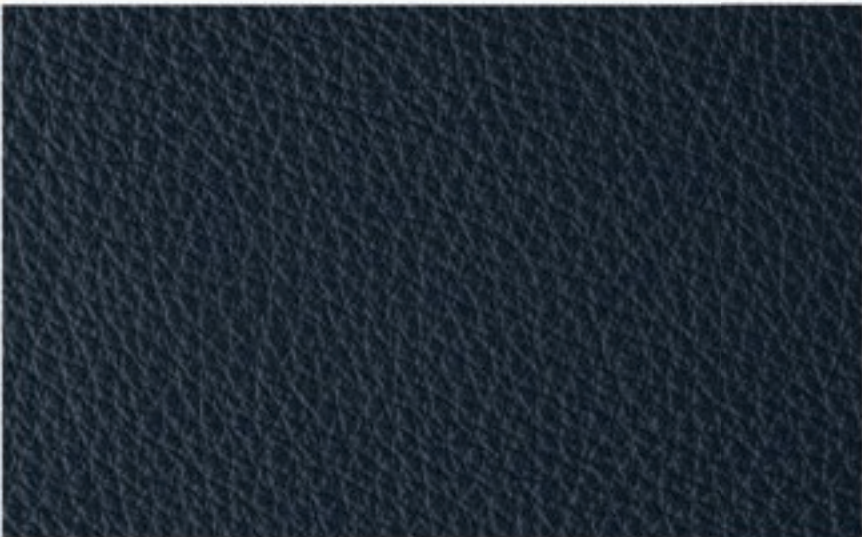
Ash



Zine



Fog



Flag



Black

ATLANTIDA

LEATHER TYPE	AVERAGE SKIN THICKNESS	RAWHIDE	PREPARATION	FIRE TESTS
Aniline Leather	1.2 - 1.4 mm	European Bovine	Lightly Buffed Natural Grain	BS 5852:1979 BS EN 1021-1-2:2006

Caution: the displayed colours, due to technical matters, are approximate and may differ from the original



LAGUNA

LEATHER TYPE	AVERAGE SKIN THICKNESS	RAWHIDE	PREPARATION	FIRE TESTS
Aniline Leather	0.9 - 1.1 mm	European Bovine	Lightly Buffed Natural Grain Transparent Protective Coat, Soft Waxy Feel, Semi-Matte Finish	CAL TB-117 (2013, Sec.1) BS 5852:1979 BS EN 1021-1-2:2006

Caution: the displayed colours, due to technical matters, are approximate and may differ from the original



Khaki



Soul



Orange



Bordeaux



Brandy



Woody



Truffle



Ebony



Lima



Musk



Sky



Blue

COUNTRY

LEATHER TYPE	AVERAGE SKIN THICKNESS	RAWHIDE	PREPARATION	FIRE TESTS
Waxed Aniline Leather	0.8 - 1.0 mm	European Bovine	Lightly Buffed Natural Grain with Vintage Look Distressed and Semi-Glossy Appearance	BS 5852:1979 BS EN 1021-1-2:2006

Caution: the displayed colours, due to technical matters, are approximate and may differ from the original



Pearl



Toffee



Camel



Caramello



Mostaza



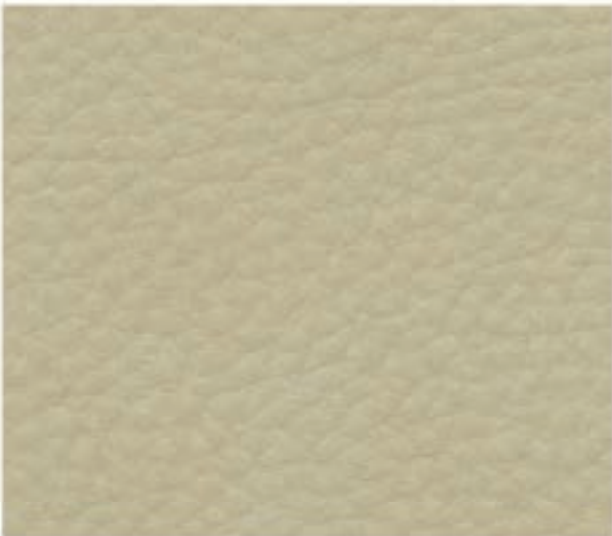
Marsala



Nude



Ivory



Cream



Khaki



Taupe



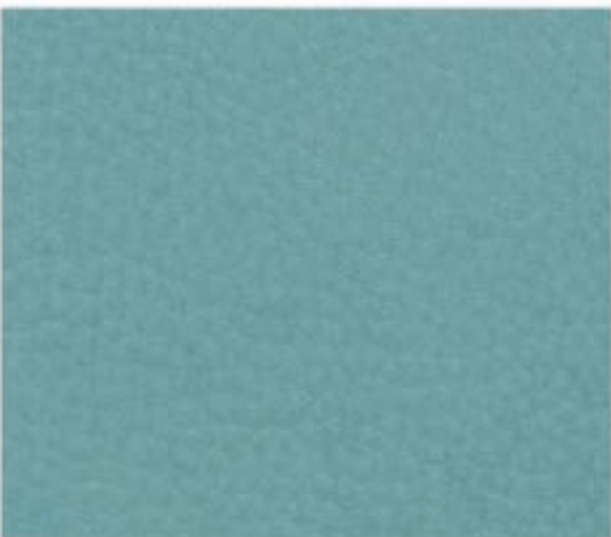
Chocolate



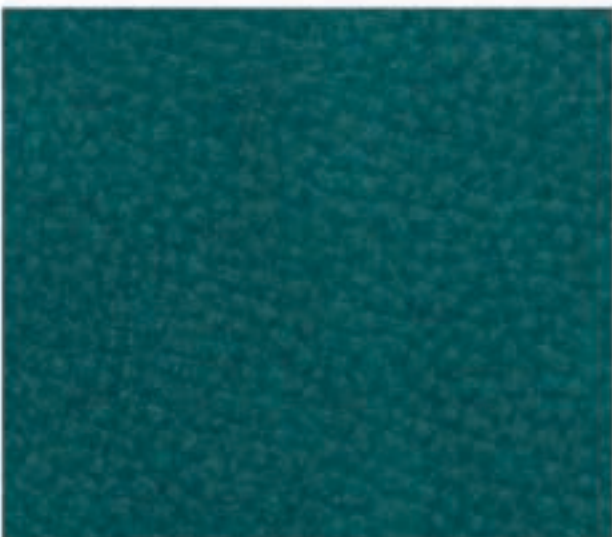
Moss



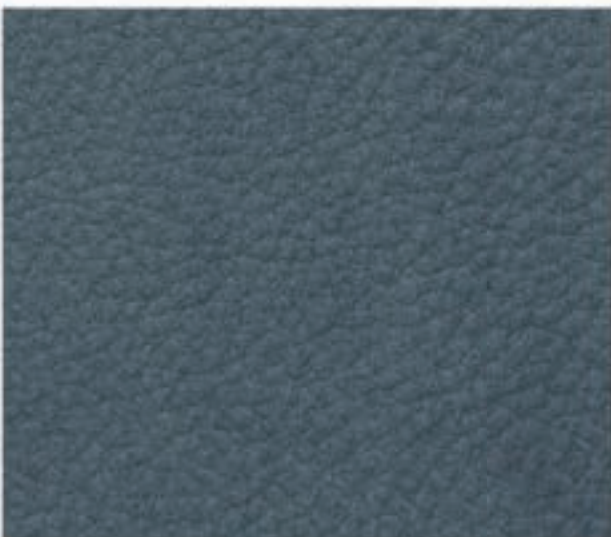
Elephant



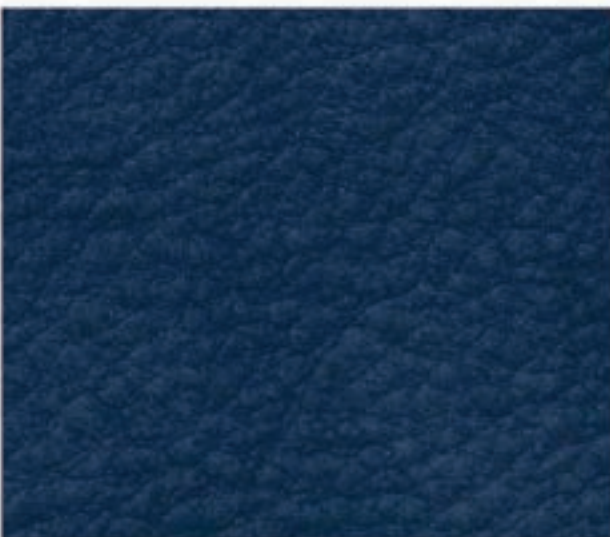
Aquamarine



Emerald



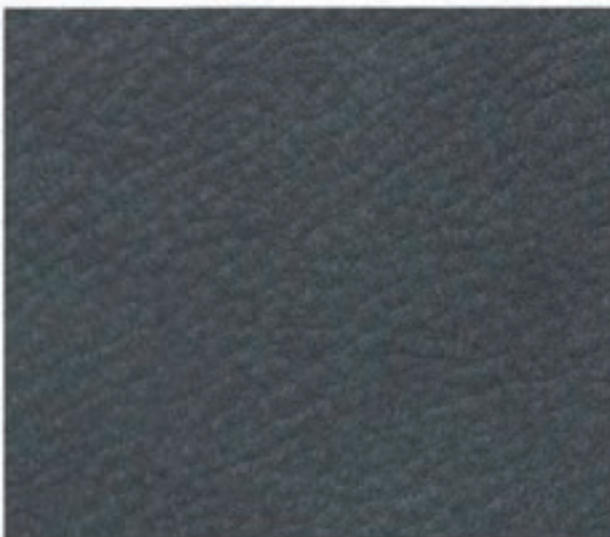
Shark



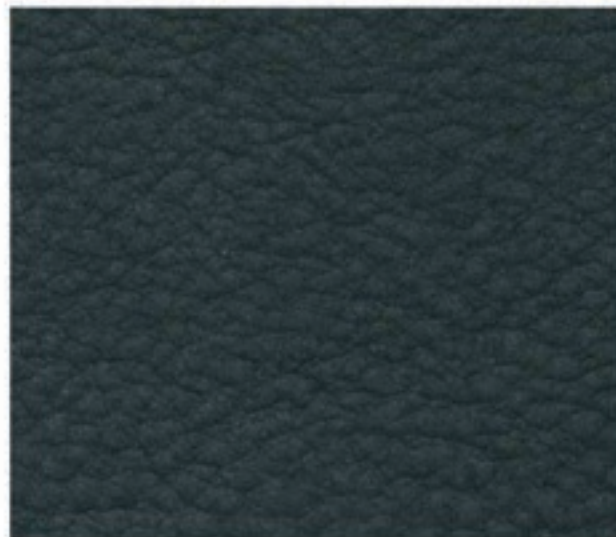
Ocean



Ash



Anthracite



Black

COLUMBIA

LEATHER TYPE	AVERAGE SKIN THICKNESS	RAWHIDE	PREPARATION	FIRE TESTS
Nubuck Leather	1.2 - 1.4 mm	European Bovine	Natural Grain Aniline Dyed, Suede Look, Liquid Repellent	BS 5852:1979 BS EN 1021-1-2:2006

Caution: the displayed colours, due to technical matters, are approximate and may differ from the original

Not all available fabrics and colours are listed on the site. Please contact us if you would like more information on available fabrics and colours.

Email: info@nue-modern.com

www.nue-modern.com