

UPHOLSTERY OPTIONS

ELISE OCCASIONAL CHAIR



Pearl



Cream



Toffee



Trufa



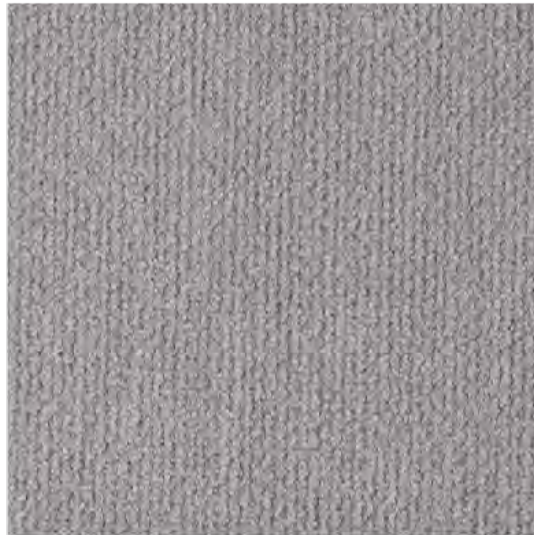
Fango



Mouse



Yellow



Light Grey



Pink



Lavanda



Teja



Bordeaux



Citric



Green



Forest



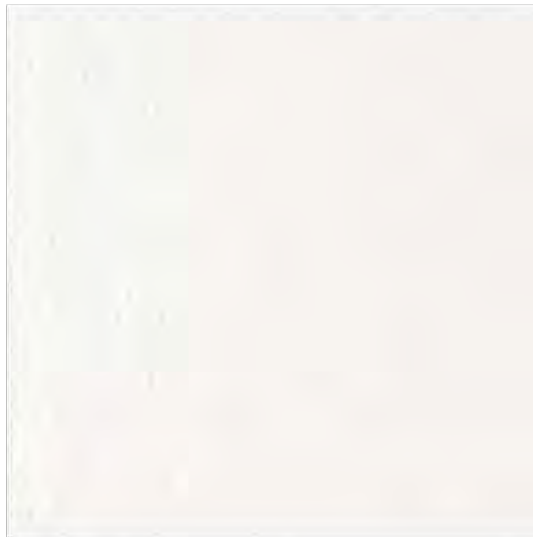
Turquoise



Sky



Jeans



White



Fog



Taupe



Elephant



Chocolate



Anthracite

APOLLO

FABRIC TYPE	COMPOSITION	DURABILITY	LIGHTFASTNESS	PILLING	FEATURES	FIRE TESTS
Chenille	100% Polyester	100,000 Martindale	4 - 5	4 - 5	Anti-Stain Liquid Repellent	BS 5852 part 1 - Cigarette Test PASS EN 1021-1 - Cigarette Test PASS CA Tech. Bull. 117:2013 / NFPA 260 - Cigarette Test PASS



BLUEWORLD[®]
HUMAN CARE TECHNOLOGY



STANDARD
100
9342CIT
CITEVE

Caution: the displayed colours, due to technical matters, are approximate and may differ from the original



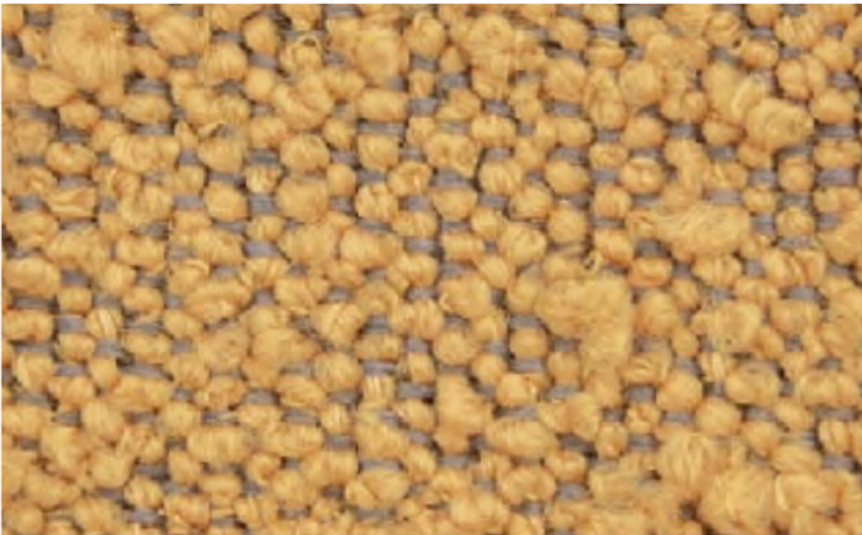
Nata



Pearl



Champagne



Mostaza



Brick



Pink



Toffee



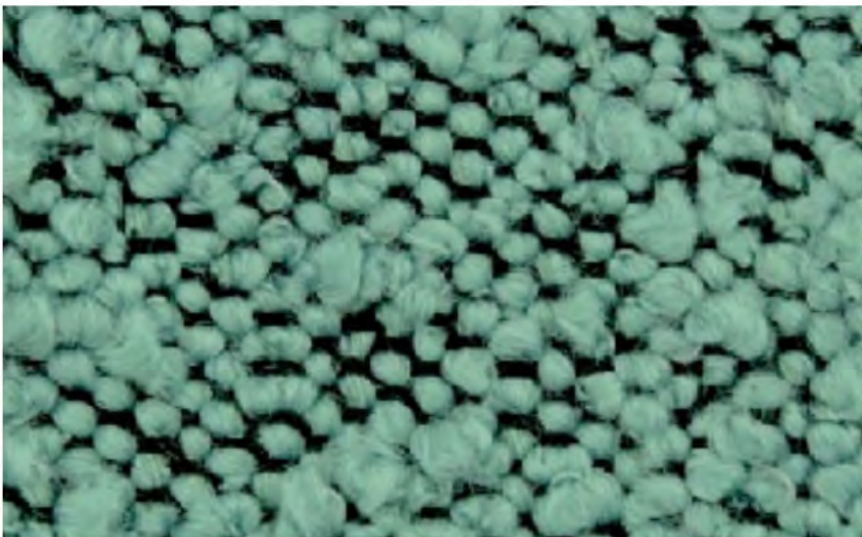
Taupe



Mouse



Olive Green



Safira



Atlantic



Graphite



Black

ASCOT

FABRIC TYPE	COMPOSITION	DURABILITY	LIGHTFASTNESS	PILLING	FIRE TESTS
Bouclé	100% Polyester	80,000 Martindale	5	4	BS 5852 part 1 - Cigarette Test PASS EN 1021-1 - Cigarette Test PASS CA Tech. Bull. 117:2013 / NFPA 260 - Cigarette Test PASS



STANDARD
100
9342CIT
CITEVE

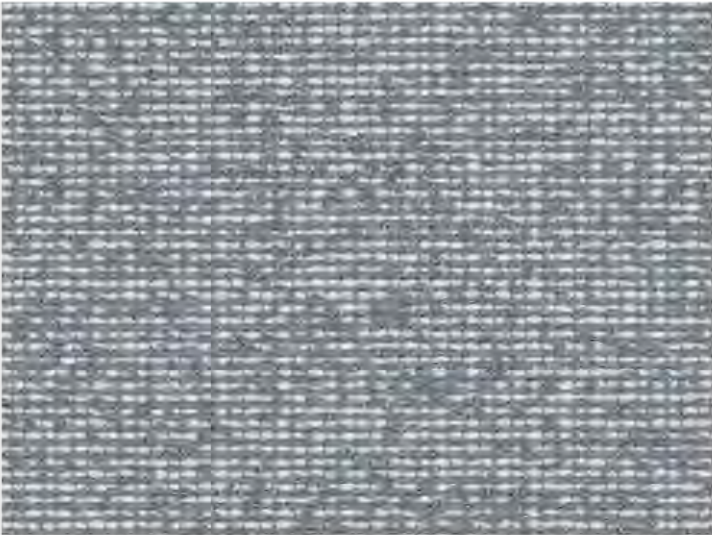
Caution: the displayed colours, due to technical matters, are approximate and may differ from the original



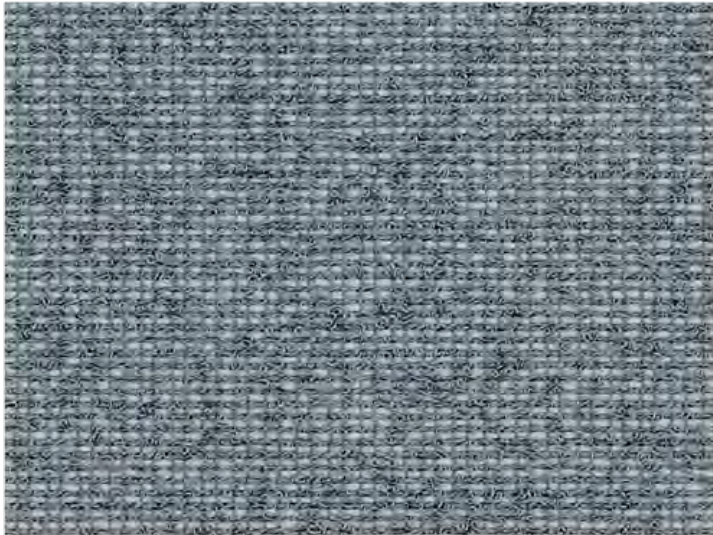
Saturation



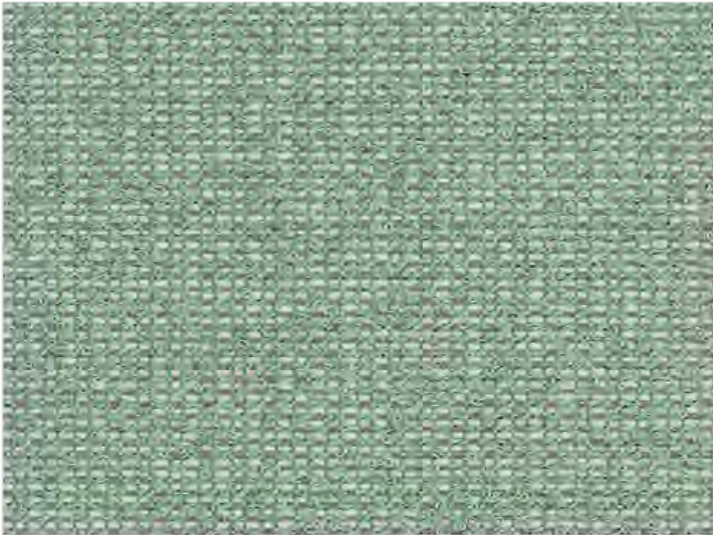
Tempera



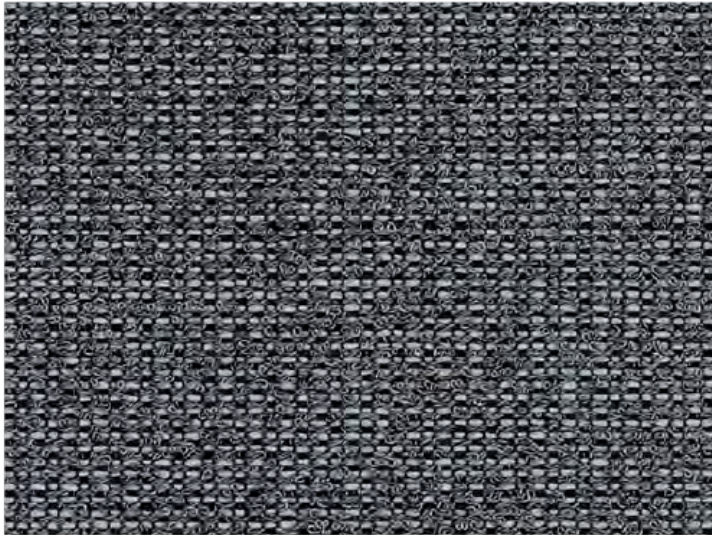
Purity



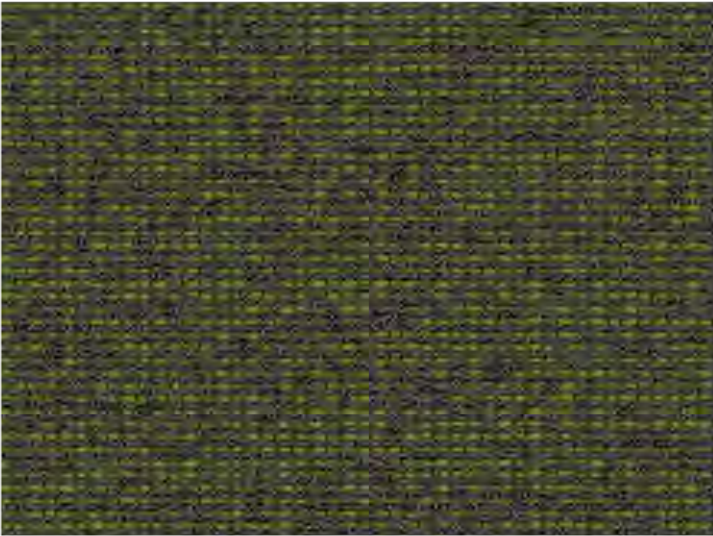
Prism



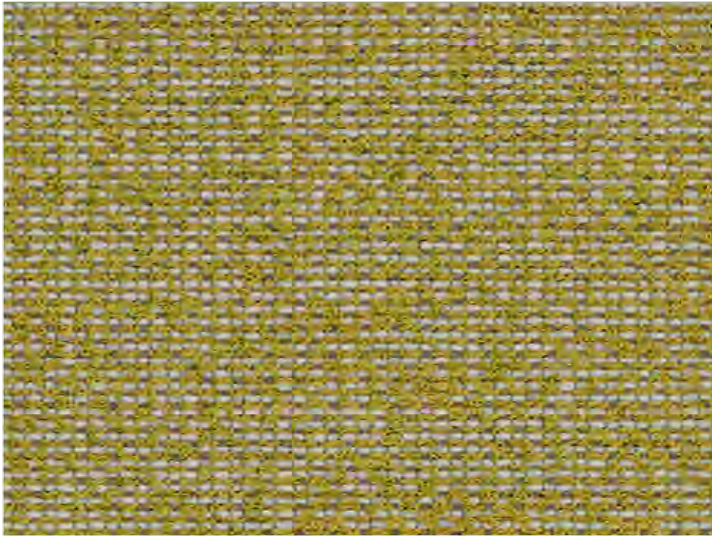
Gamut



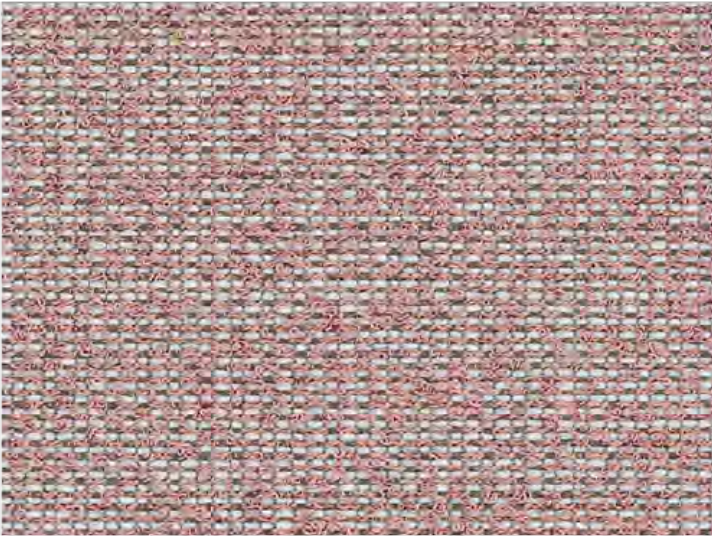
Tone



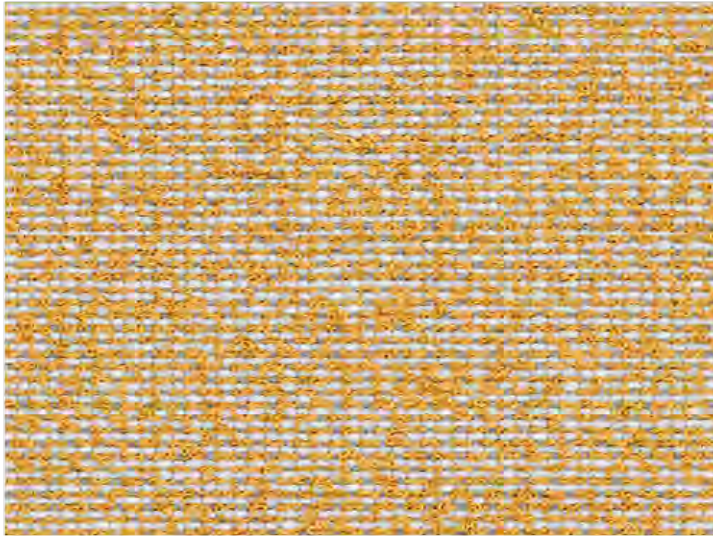
Goethe



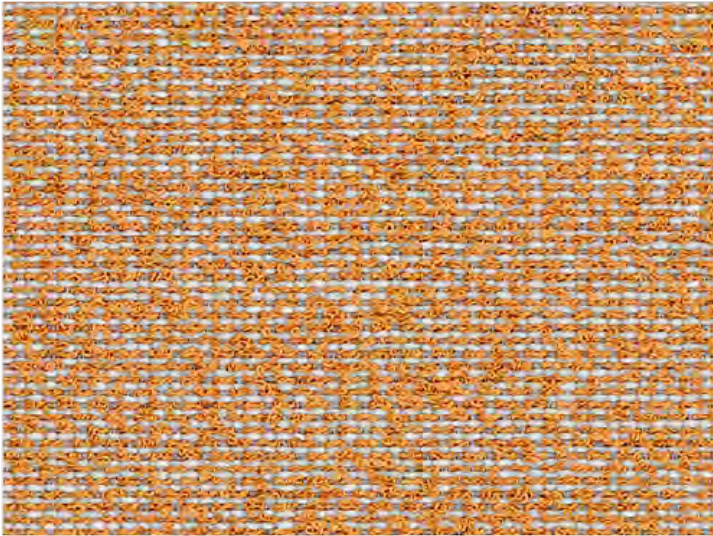
Hue



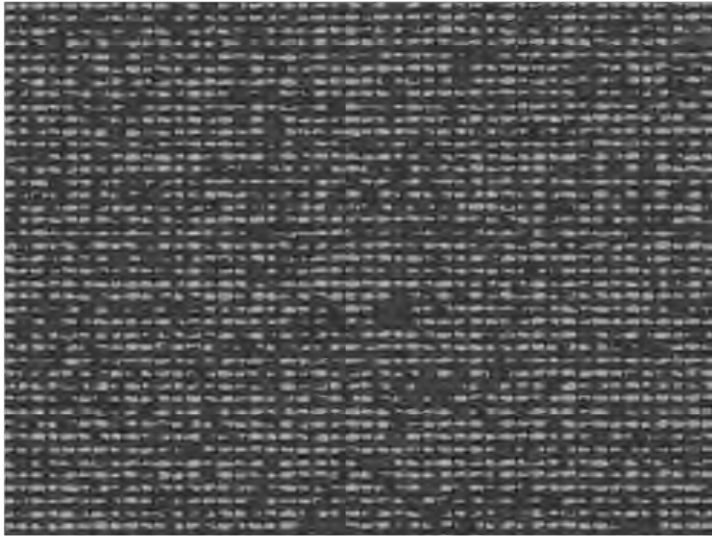
Pigment



Glow



Newton



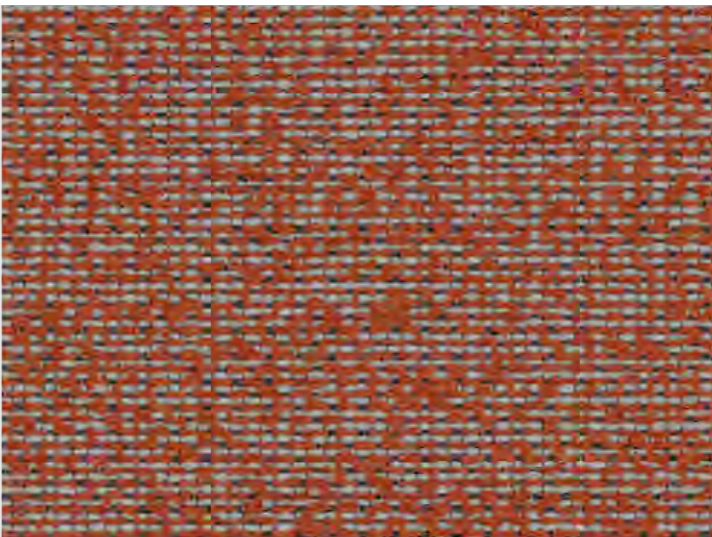
Dark



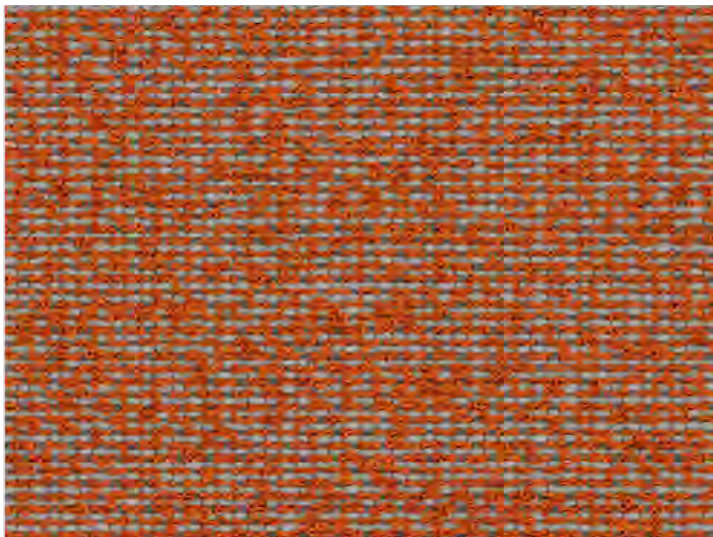
Hint



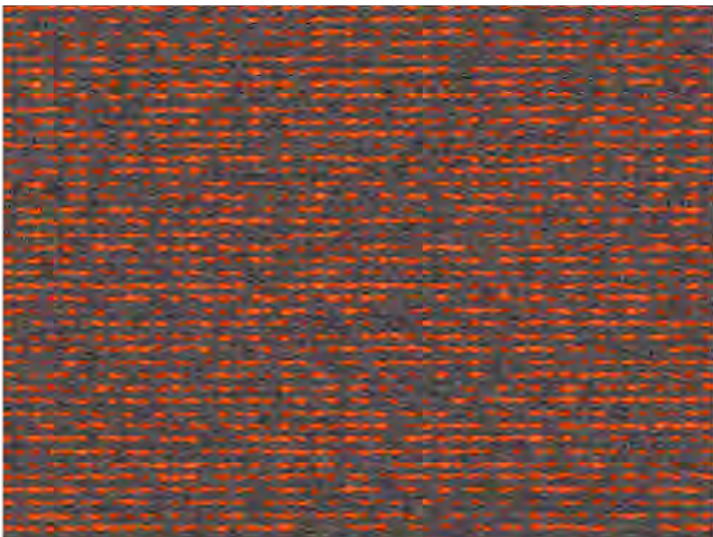
Trace



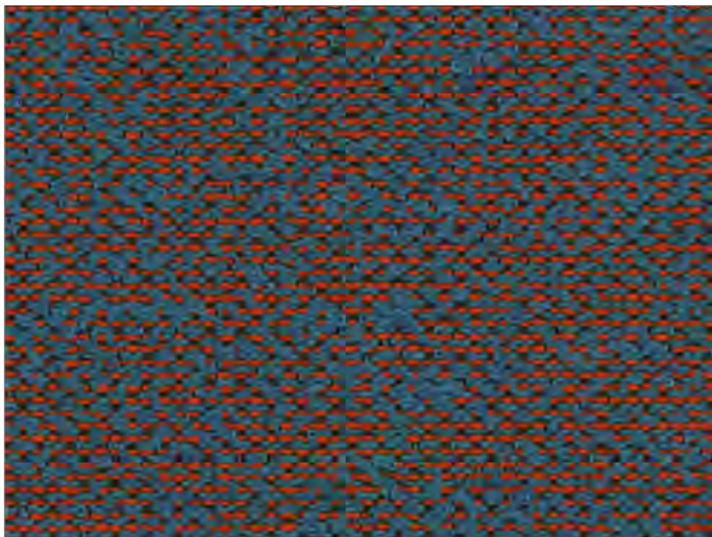
Render



Diad



Radiance



Harlequin

AUCKLAND
By Vescom



FABRIC TYPE	COMPOSITION	DURABILITY	LIGHTFASTNESS	PILLING	FIRE TESTS
Bouclé	76% Recycled Polyester FR 24% Polyester FR	60,000 Martindale	6	4	EN 1021/1-2, Pass; BS 5852, Crib 5; NF P 92/503-507 or NF D 60-013, M1 DIN 4102, B1 Cal TB 117-2013, section 1, Pass; IMO 2010 FTP part 8, Pass; NFPA 260, Class 1

Caution: the displayed colours, due to technical matters, are approximate and may differ from the original



BALTIC

FABRIC TYPE	COMPOSITION	DURABILITY	LIGHTFASTNESS	PILLING	FEATURES	FIRE TESTS
Chenille	100% Polyester	35,000 Martindale	5	4	Anti-Stain	BS 5852 part 1 - Cigarette Test PASS EN 1021-1 - Cigarette Test PASS CA Tech. Bull. 117:2013 / NFPA 260 - Cigarette Test PASS



Caution: the displayed colours, due to technical matters, are approximate and may differ from the original



White



Sand



Pale Rose



Paprika



Cinnamon



Aqua



Pine



Hunter



Dark Forest



Fossil



Pebble



Dove



Stone



Shadow



Charcoal

BOUCLÉ

FABRIC TYPE	COMPOSITION	DURABILITY	LIGHTFASTNESS	PILLING
Bouclé	100% Polyester	80,000 Martindale	3	4

Caution: the displayed colours, due to technical matters, are approximate and may differ from the original



Fog



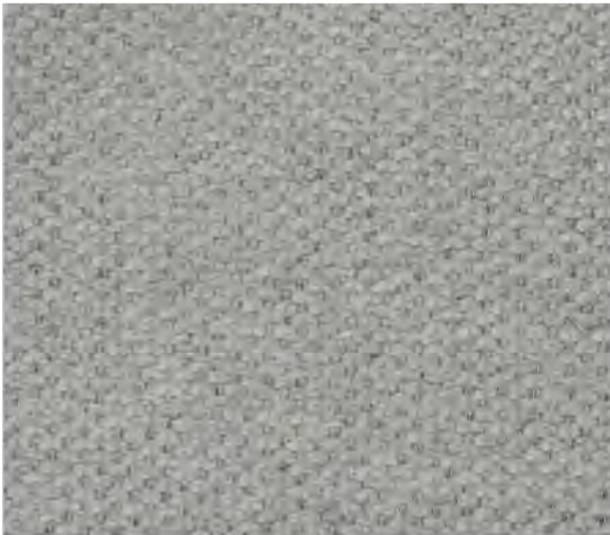
Peral



Beige



Mud



Cement



Tabac



Chocolate



Camel



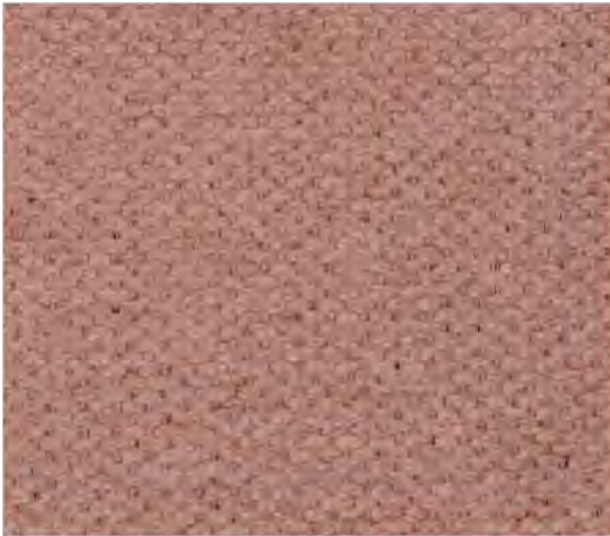
Truffle



Mostaza



Brick



Coral



Rose



Bordeaux



Water Green



Ash



Bottle



Jeans



Ocean



Anthracite



Black

BROOKLYN

FABRIC TYPE	COMPOSITION	DURABILITY	LIGHTFASTNESS	PILLING	FEATURES	FIRE TESTS
Chenille	94% Polyester + 6% Nylon	50,000 Martindale	3 -4	4 - 5	Anti-Stain	BS 5852 part 1 - Cigarette Test PASS EN 1021-1 - Cigarette Test PASS CA Tech. Bull. 117:2013 / NFPA 260 - Cigarette Test PASS



STANDARD 100
9342CIT CITEVE

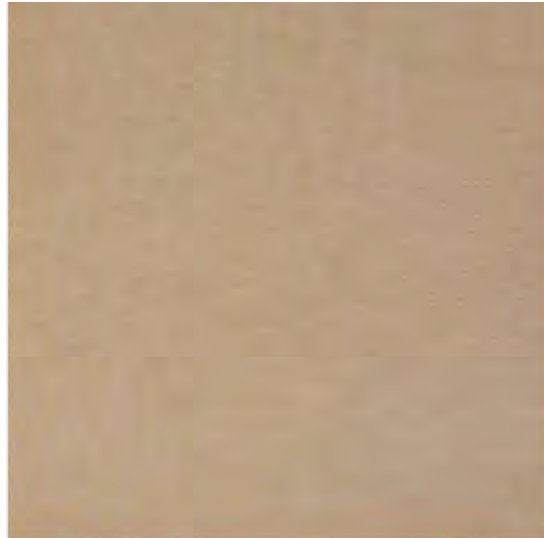
Caution: the displayed colours, due to technical matters, are approximate and may differ from the original



Pearl



Beige



Lion



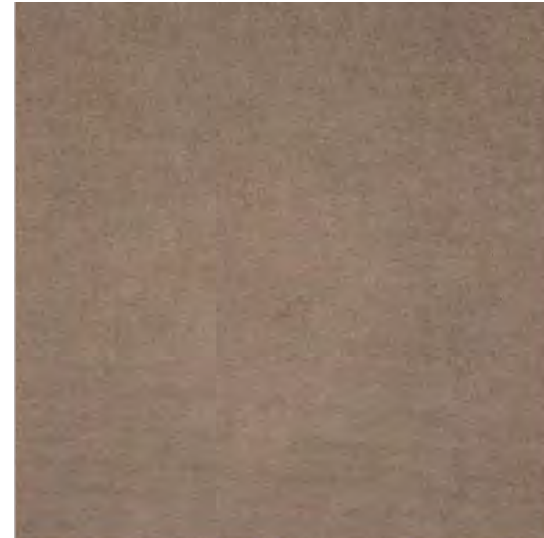
Fog



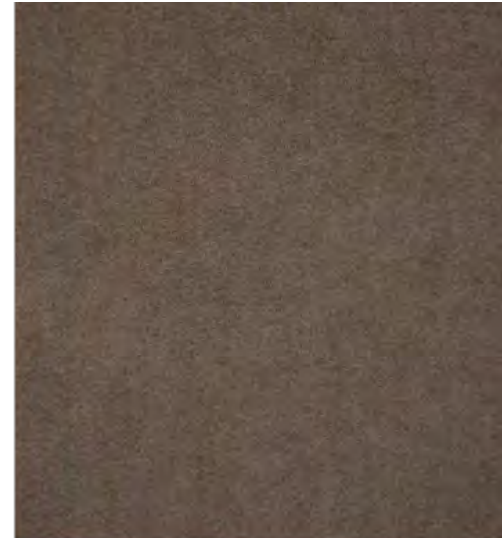
Stone



Elephant



Taupe



Ebony



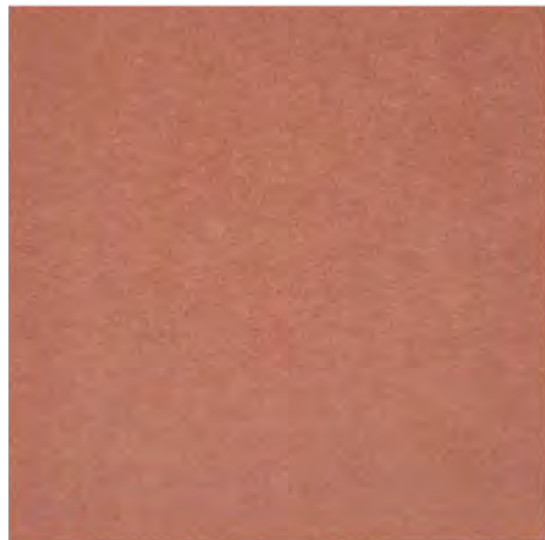
Sand



Light Violet



Pink



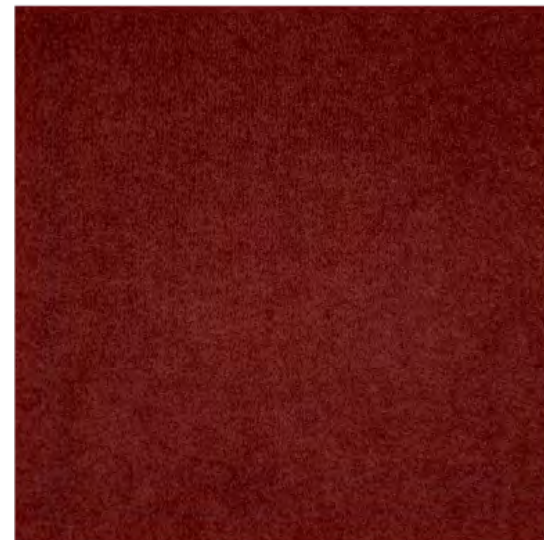
Salmon



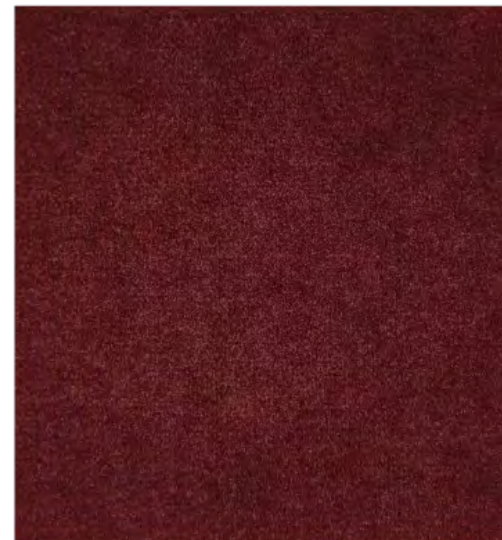
Cuoio



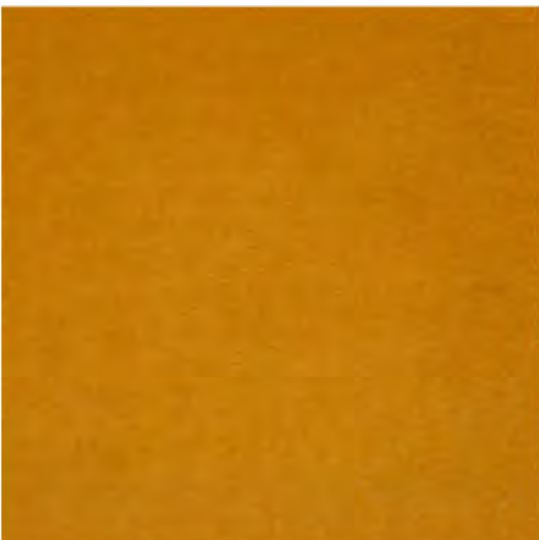
Terracotta



Marsala



Bordeaux



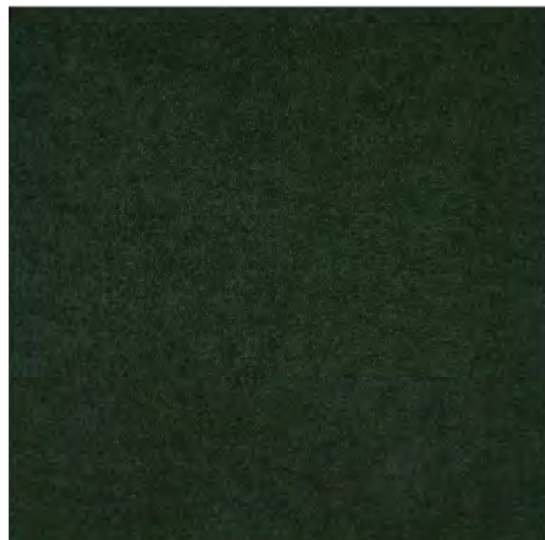
Mostaza



Olive



Forest



Deep Green



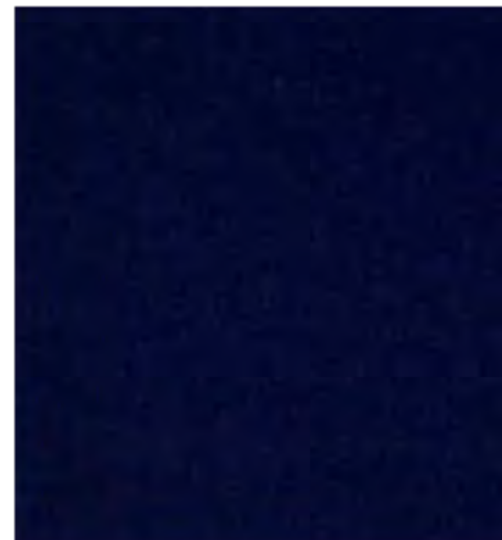
Safira



Dark Blue



Ocean



Deep Blue

CASINO

FABRIC TYPE	COMPOSITION	DURABILITY	LIGHTFASTNESS	PILLING	FEATURES	FIRE TESTS
Velvet - Matte Finish	100% Polyester	100,000 Martindale	4 - 5	4 - 5	Anti-Stain Pet Friendly	BS 5852 part 1 - Cigarette Test PASS EN 1021-1 - Cigarette Test PASS CA Tech. Bull. 117:2013 / NFPA 260 - Cigarette Test PASS

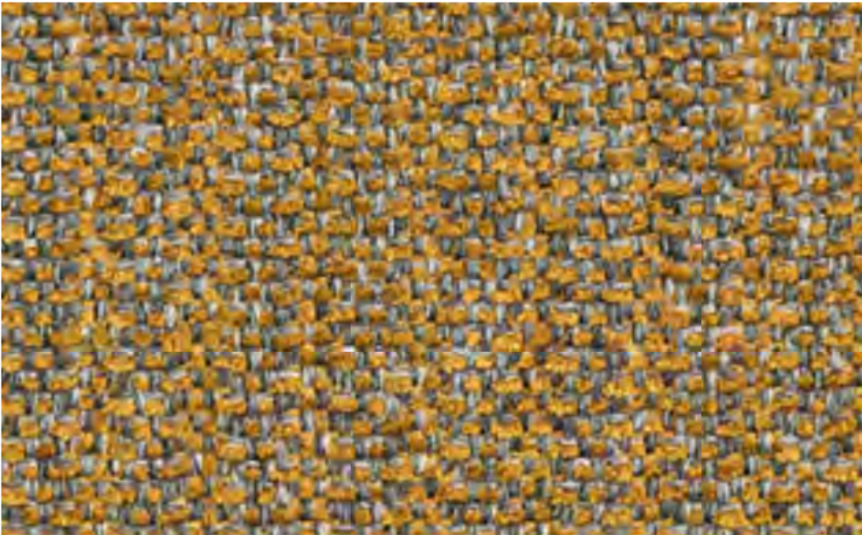


BLUEWORLD[®]
HUMAN CARE TECHNOLOGY



STANDARD
100
9342CIT
CITEVE

Caution: the displayed colours, due to technical matters, are approximate and may differ from the original



Fortress



Beacon



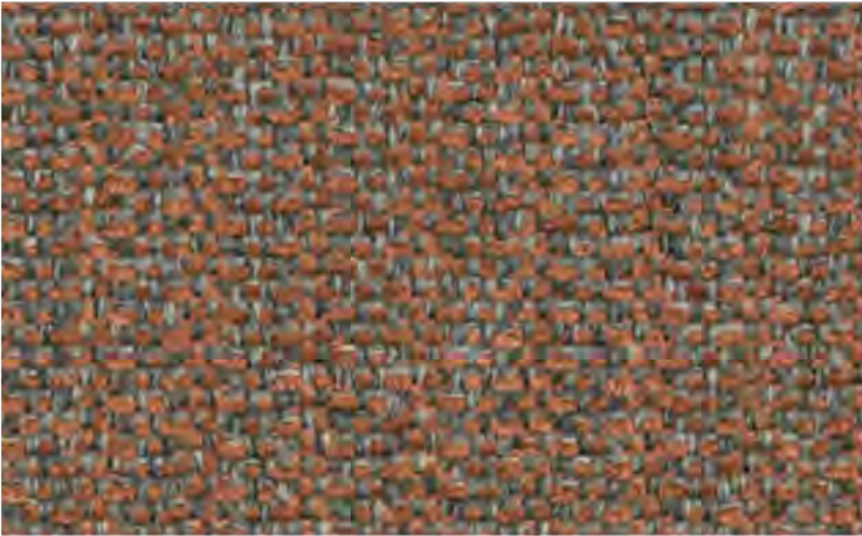
Redoubt



Drawbridge



Augusta



Hideaway



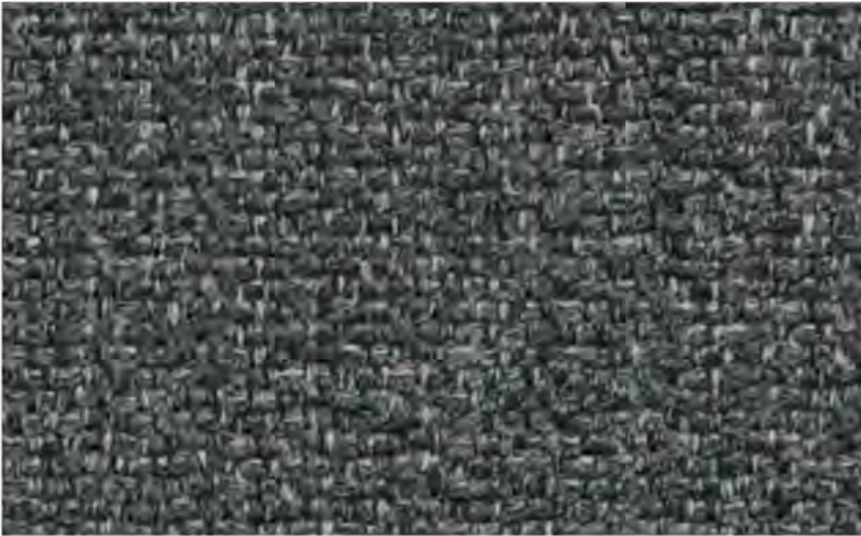
Hamilton



Resistance



Stillwater



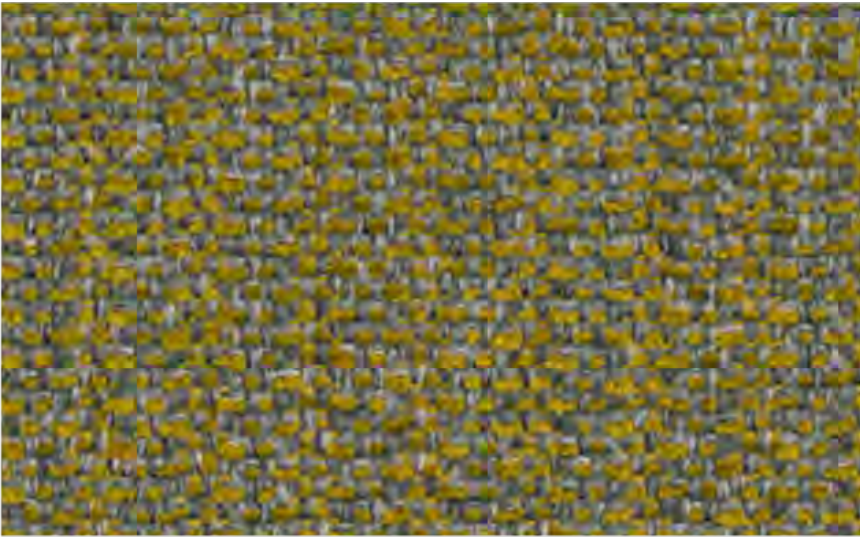
Confine



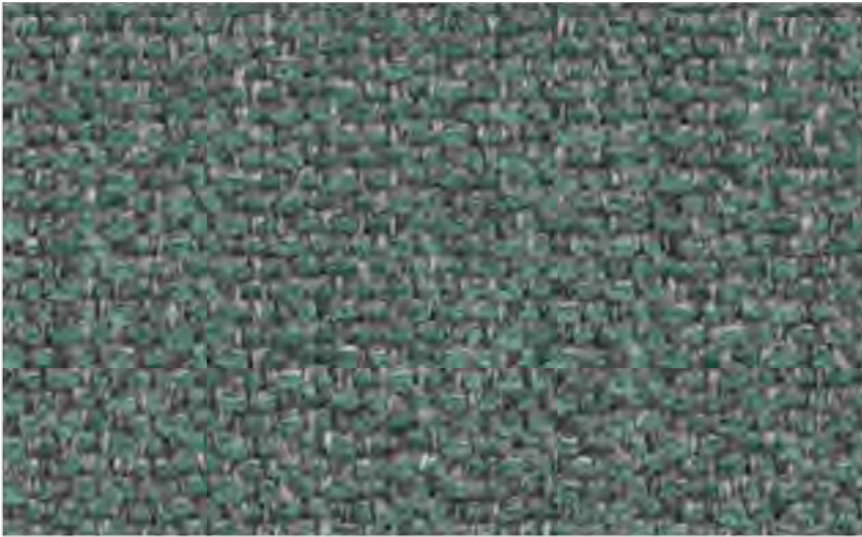
Craven



Ralstone



Bingham



Abide

DIKSON

By Vescom

FABRIC TYPE	COMPOSITION	DURABILITY	LIGHTFASTNESS	PILLING	FIRE TESTS
Chenille	100% Polyester	100,000 Martindale	6	4 - 5	EN 1021/1-2, Pass; BS 5852, Crib 5; NF P 92/503-507 or NF D 60-013, M1 DIN 4102, B1 Cal TB 117-2013, section 1, Pass; IMO 2010 FTP part 8, Pass; NFPA 260, Class 1



Caution: the displayed colours, due to technical matters, are approximate and may differ from the original



Caponex



Palenque



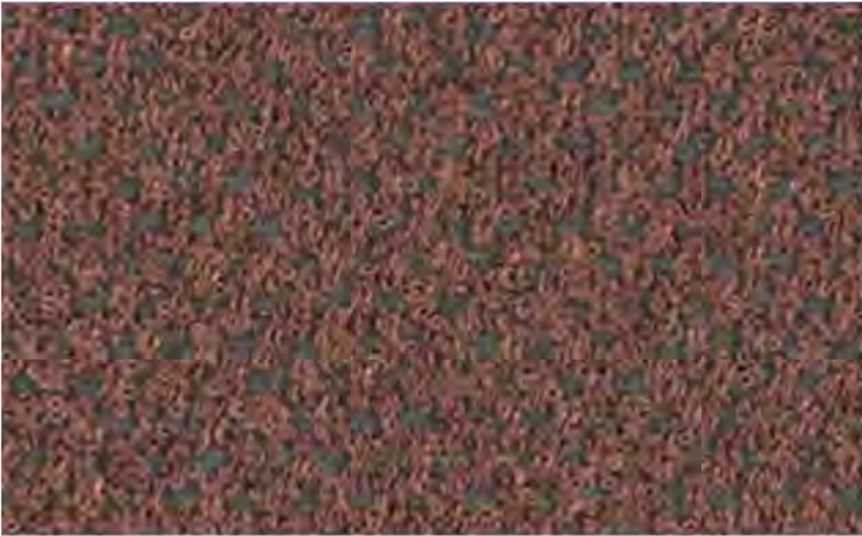
Gorkha



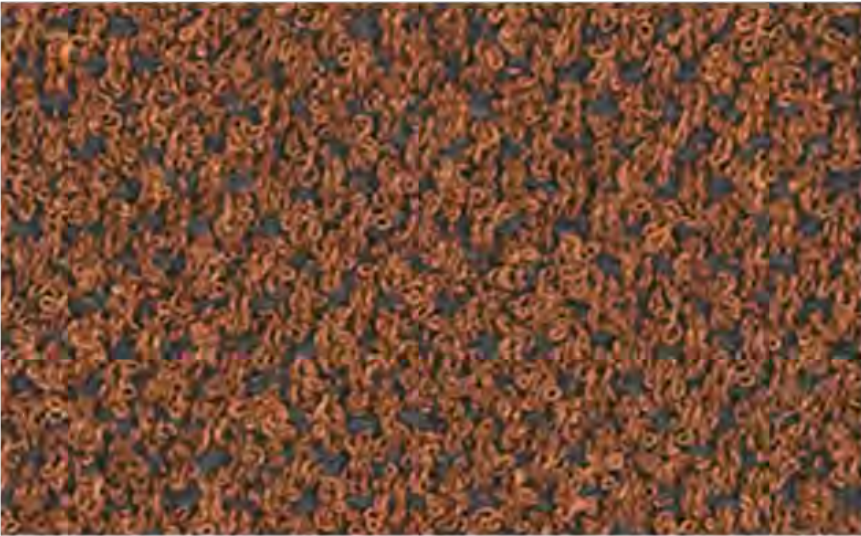
Petra



Meteora



Zion



Marrakech



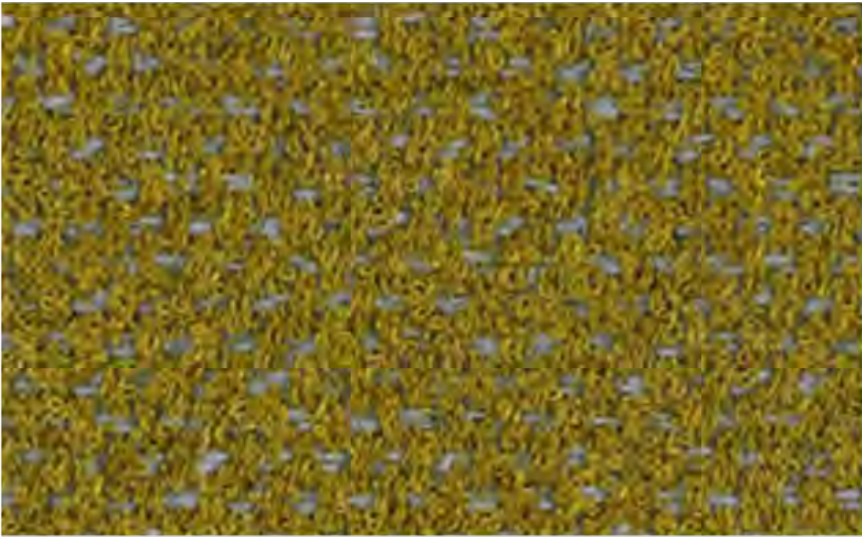
Dolomites



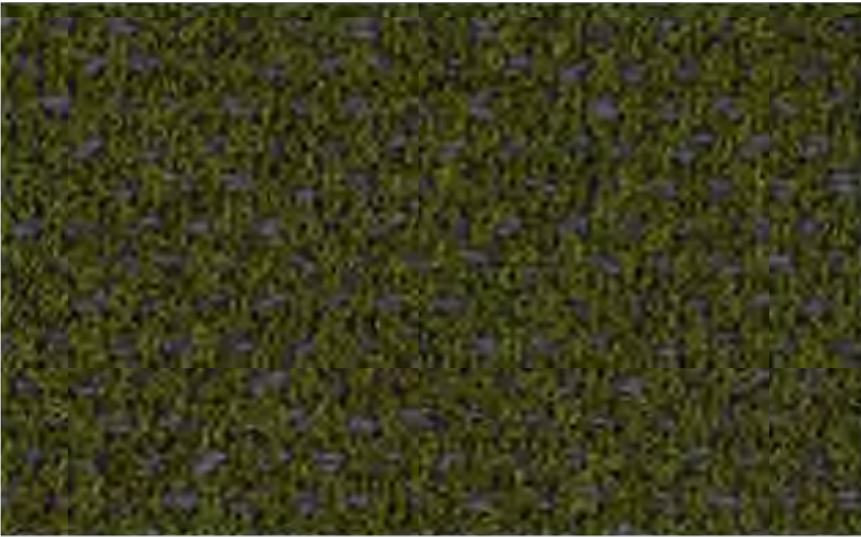
Halong



Molokai



Yosemite



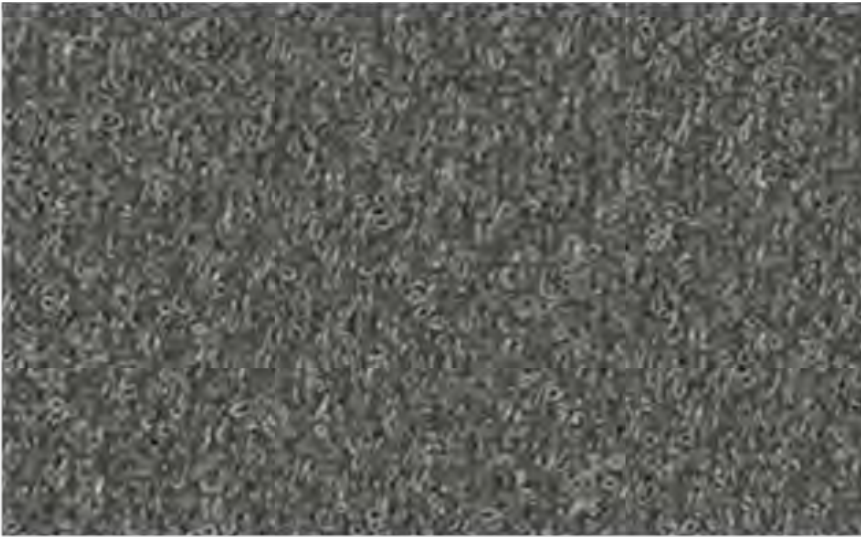
Patagonia



Rainer



Calabria



Malham

FOSTER

By Vescom



Caution: the displayed colours, due to technical matters, are approximate and may differ from the original

FABRIC TYPE	COMPOSITION	DURABILITY	LIGHTFASTNESS	PILLING	FIRE TESTS
Bouclé	97% Recycled Polyester FR 3% Polyester FR	60,000 Martindale	6	4	EN 1021/1-2, Pass; BS 5852, Crib 5; NF P 92/503-507 or NF D 60-013, M1 DIN 4102, B1 Cal TB 117-2013, section 1, Pass; IMO 2010 FTP part 8, Pass; NFPA 260, Class 1



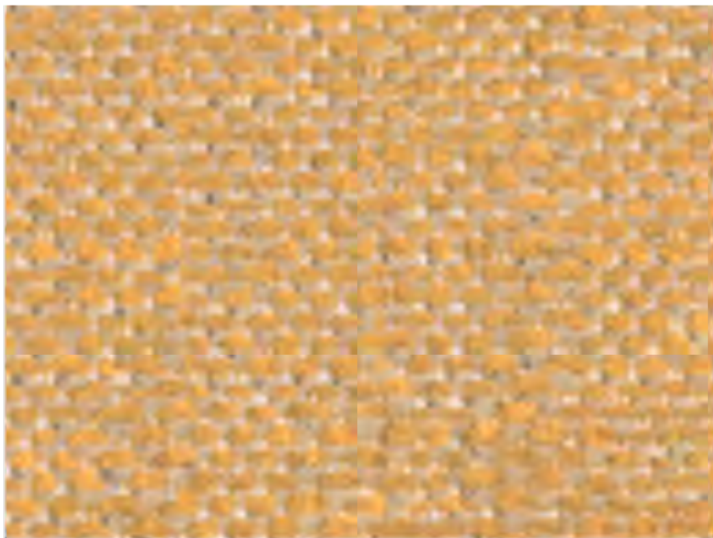
Vit



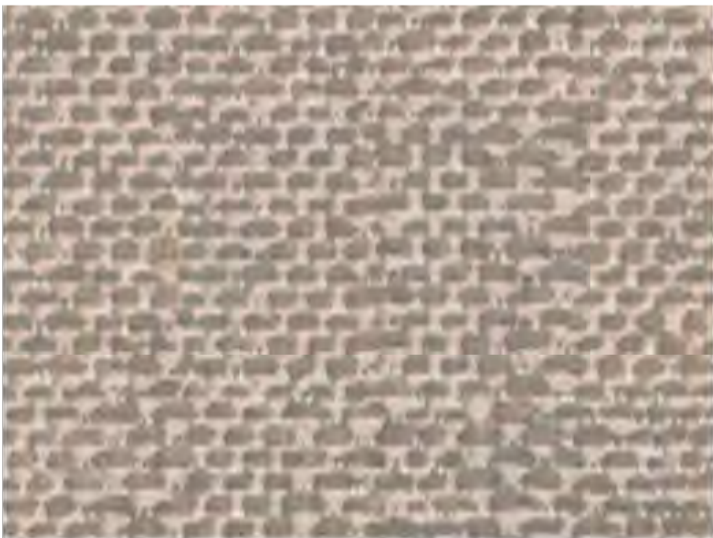
Clan



Shetland



Lora



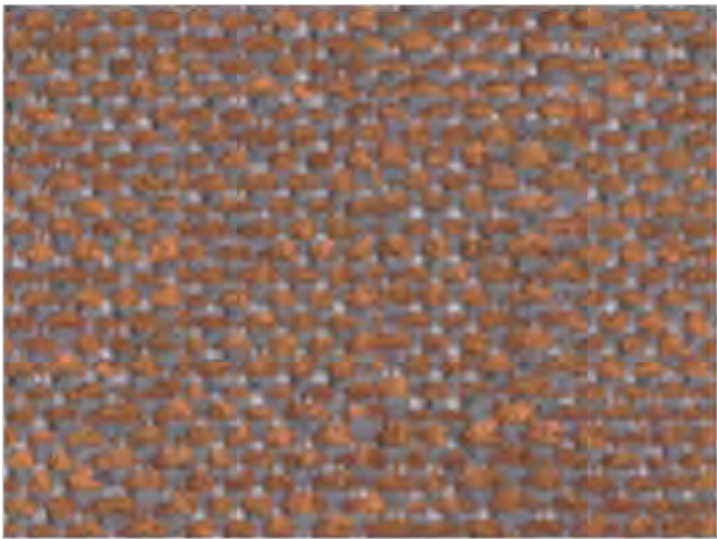
Hillswick



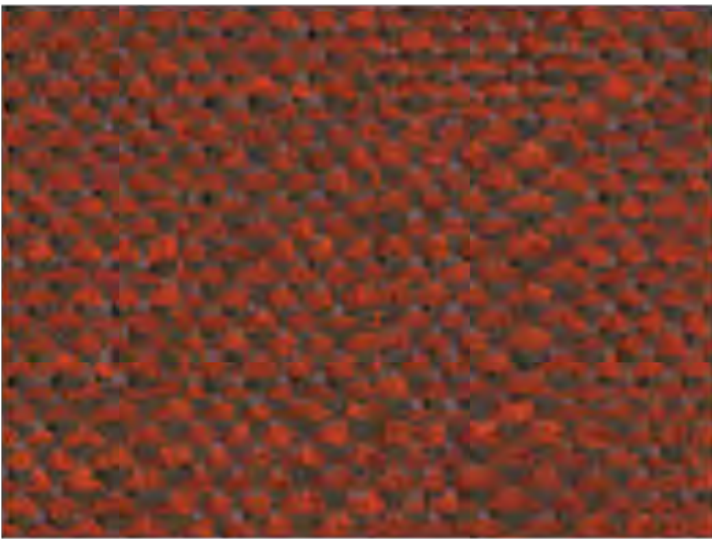
Dolphin



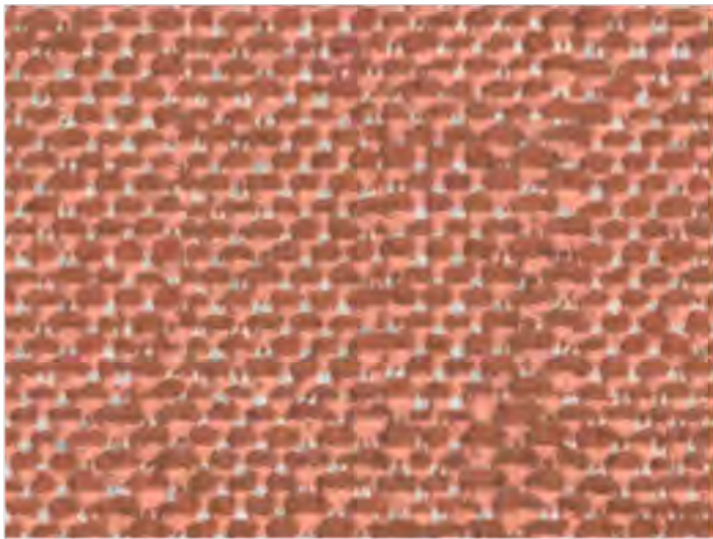
Lomond



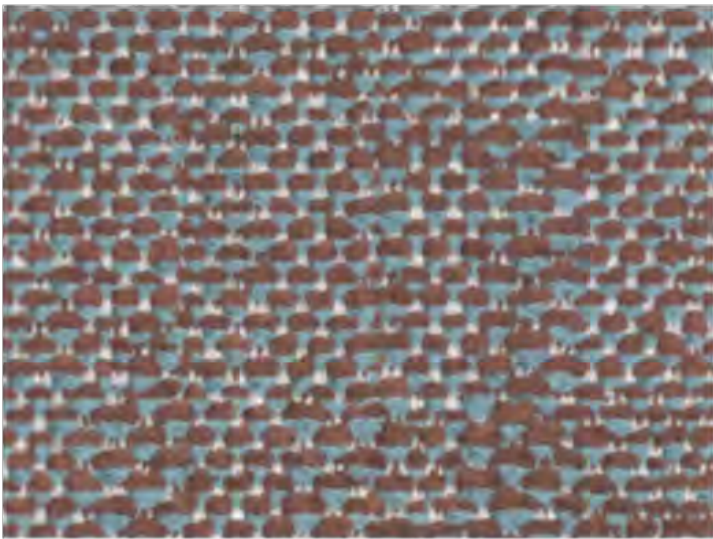
Austen



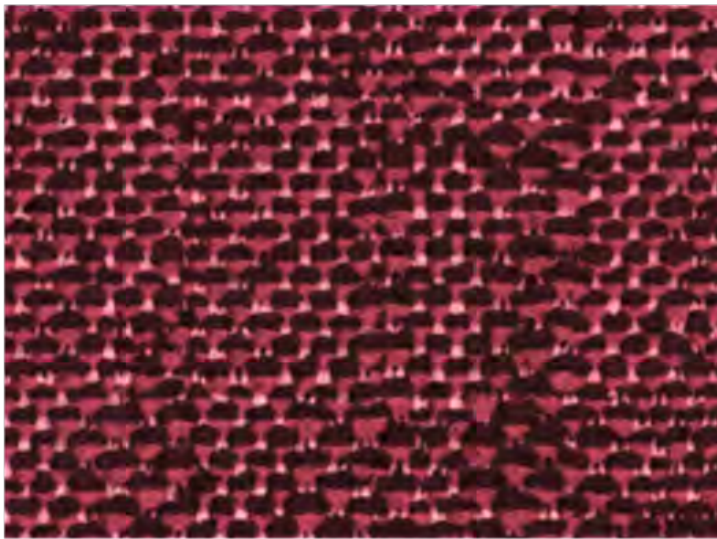
Pitlochry



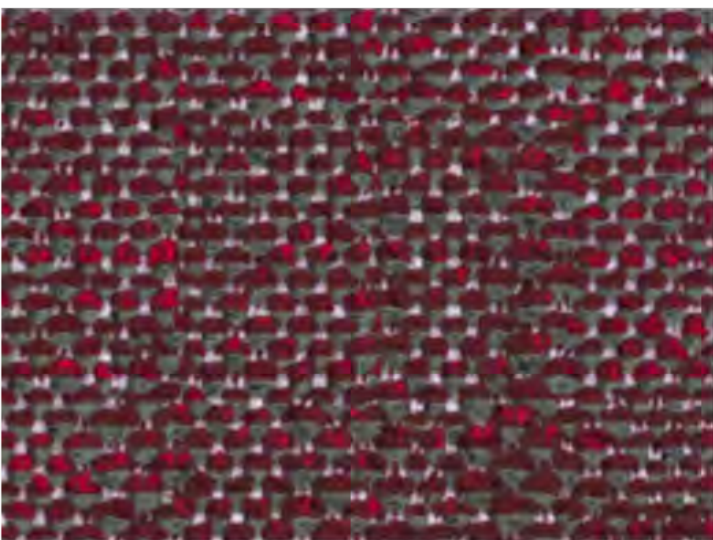
Maree



Denny



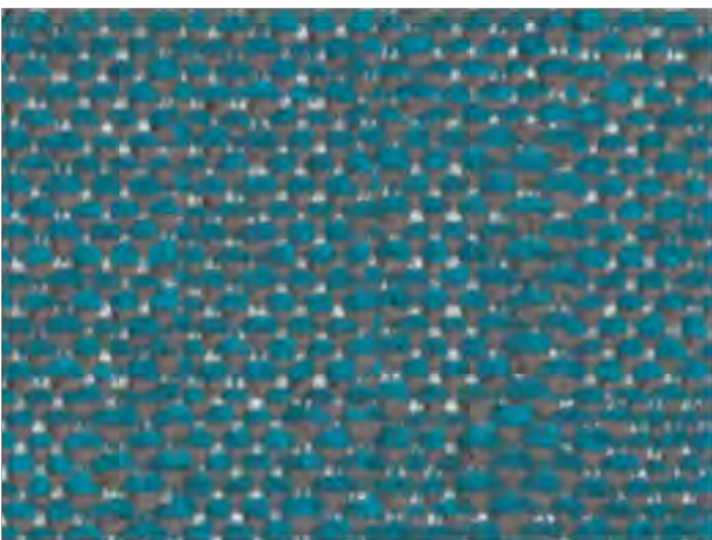
Tummel



Lossie



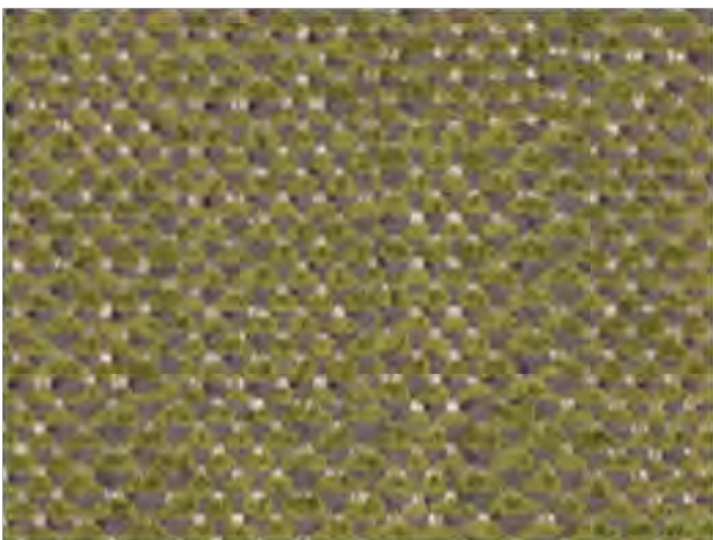
Adriatic



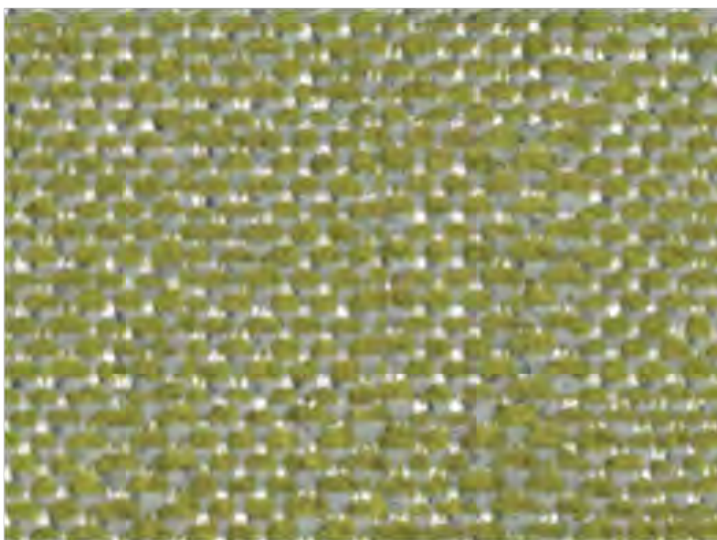
Inverness



Carron



Staffa



Fair Isle

FUGA

By Vescom



Caution: the displayed colours, due to technical matters, are approximate and may differ from the original

FABRIC TYPE	COMPOSITION	DURABILITY	LIGHTFASTNESS	PILLING	FIRE TESTS
Chenille	79% Recycled Polyester FR 21% Polyester FR	70,000 Martindale	6 - 7	4 - 5	EN 1021/1-2, Pass; BS 5852, Crib 5; NF P 92/503-507 or NF D 60-013, M1 DIN 4102, B1 Cal TB 117-2013, section 1, Pass; IMO 2010 FTP part 8, Pass; NFPA 260, Class 1



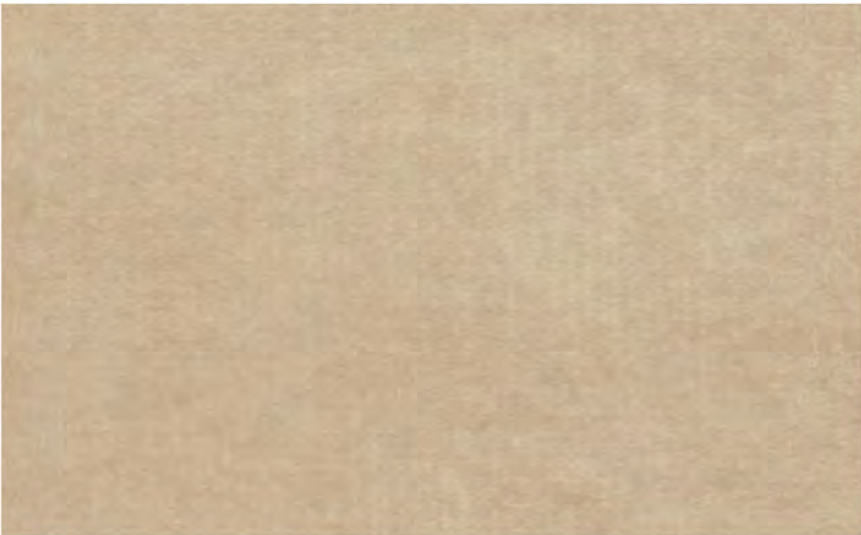
HARALD

FABRIC TYPE	COMPOSITION	DURABILITY	LIGHTFASTNESS	PILLING	FEATURES	FIRE TESTS
Velvet - Soft Sheen	100% Cotton	50,000 Martindale	3	5	Liquid Repellent	BS 5852 part 1 - Cigarette Test PASS EN 1021-1 - Cigarette Test PASS CA Tech. Bull. 117:2013 / NFPA 260 - Cigarette Test PASS

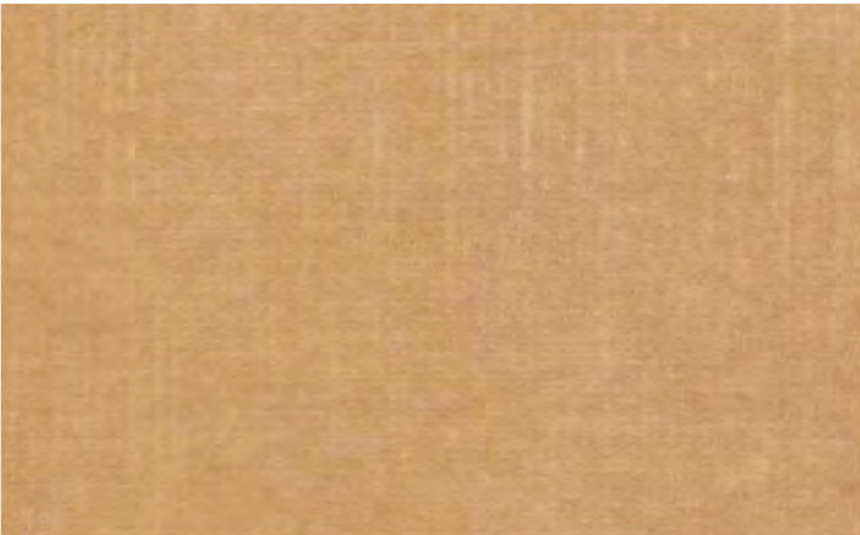
Caution: the displayed colours, due to technical matters, are approximate and may differ from the original



Pearl



Sand



Toffee



Truffle



Coral



Brick



Gold



Cuoio



Terra



Chocolate



Moss



Emerald



Forest



Ash



Black

MACAU

FABRIC TYPE	COMPOSITION	DURABILITY	LIGHTFASTNESS	PILLING	FEATURES	FIRE TESTS
Velvet - Soft Sheen	100% Polyester	90,000 Martindale	5	4 - 5	Anti-Stain Pet Friendly	BS 5852 part 1 - Cigarette Test PASS EN 1021-1 - Cigarette Test PASS CA Tech. Bull. 117:2013 / NFPA 260 - Cigarette Test PASS



BLUEWORLD[®]
HUMAN CARE TECHNOLOGY



STANDARD
100
9342CIT
CITEVE

Caution: the displayed colours, due to technical matters, are approximate and may differ from the original



Pearl



Nude



Sand



Taupe



Ebony



Mostaza



Cuoio



Brandy



Bordeaux



Pink



Khaki



Silver



Ash



Forest



Ocean

MAJESTIC

FABRIC TYPE	COMPOSITION	DURABILITY	LIGHTFASTNESS	PILLING	FEATURES	FIRE TESTS
Embossed Velvet	100% Polyester	250,000 Martindale	4	4	Anti-Stain	BS 5852 part 1 - Cigarette Test PASS EN 1021-1 - Cigarette Test PASS CA Tech. Bull. 117:2013 / NFPA 260 - Cigarette Test



Caution: the displayed colours, due to technical matters, are approximate and may differ from the original



Solace



True



Harmony



Cuddle



Retreat



Dainty



Affection



Bliss



Courtesy



Kind



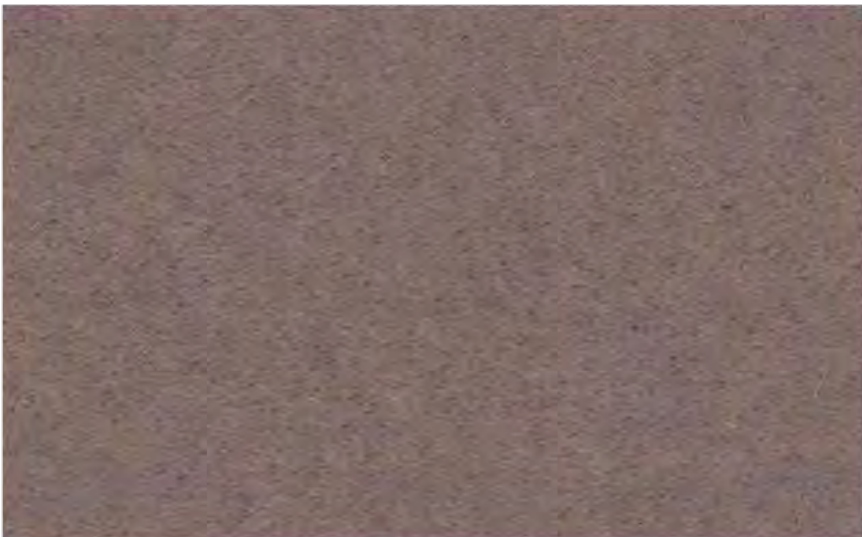
Pillow



Daydream



Haven



Sympathy



Tender

MONTE

By Vescom



USCG –
EU MRA
0038



STANDARD
100
1207035
Centexbel



Caution: the displayed colours, due to technical matters, are approximate and may differ from the original

FABRIC TYPE	COMPOSITION	DURABILITY	LIGHTFASTNESS	PILLING	FIRE TESTS
Velvet	100% Mohair Extreme High Pile	100,000 double rubs Wyzenbeek	5	4 - 5	EN 1021/1-2, Pass; BS 5852, Crib 5; NF P 92/503-507 or NF D 60-013, M2; DIN 4102, B2; Cal TB 117-2013, section 1, Pass; IMO 2010 FTP part 8, Pass; NFPA 260, Class 1



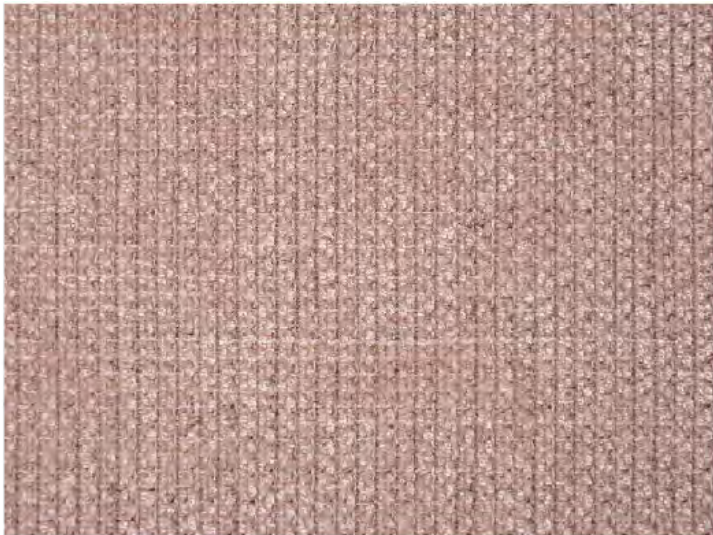
Pearl



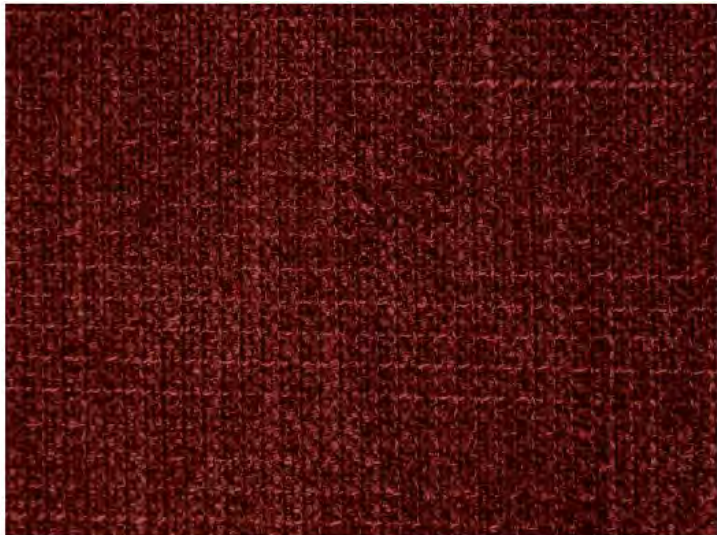
Ivory



Toffee



Pink



Marsala



Deep Purple



Mostaza



Mud



Truffle



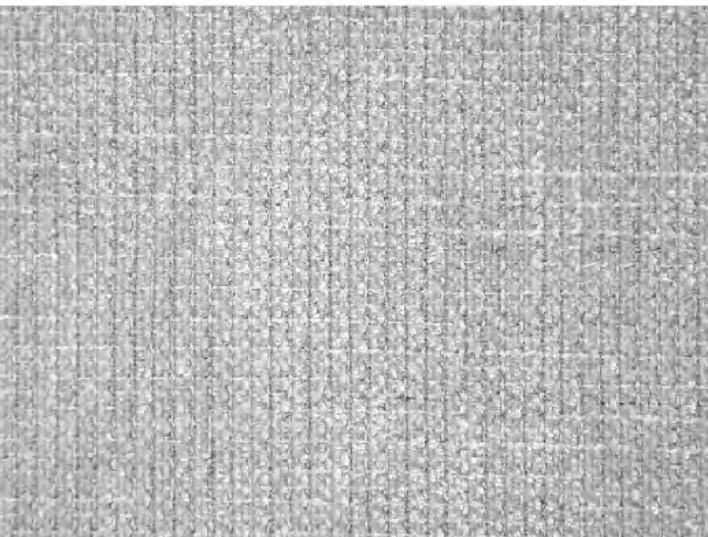
Green



Forest



Chocolate



Cement



Fog



Ocean



Taupe



Anthracite



Black

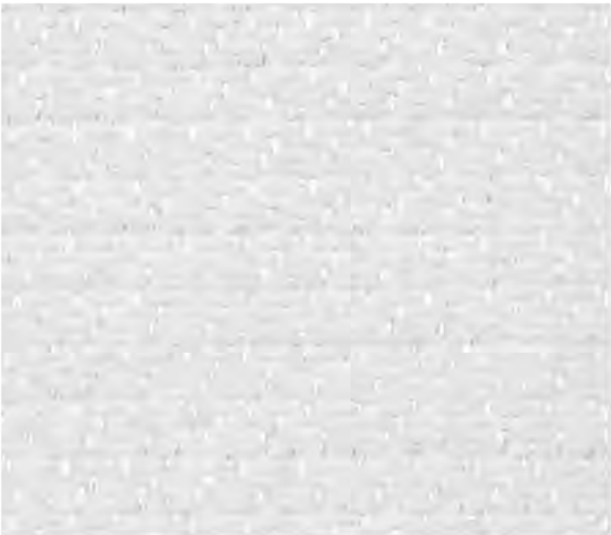
TRIBU

FABRIC TYPE	COMPOSITION	DURABILITY	LIGHTFASTNESS	PILLING	FEATURES	FIRE TESTS
Chenille	100% Polyester	35,000 Martindale	5	4	Anti-Stain	BS 5852 part 1 - Cigarette Test PASS EN 1021-1 - Cigarette Test PASS CA Tech. Bull. 117:2013 / NFPA 260 - Cigarette Test PASS



STANDARD
100
9342CIT
CITEVE

Caution: the displayed colours, due to technical matters, are approximate and may differ from the original



White



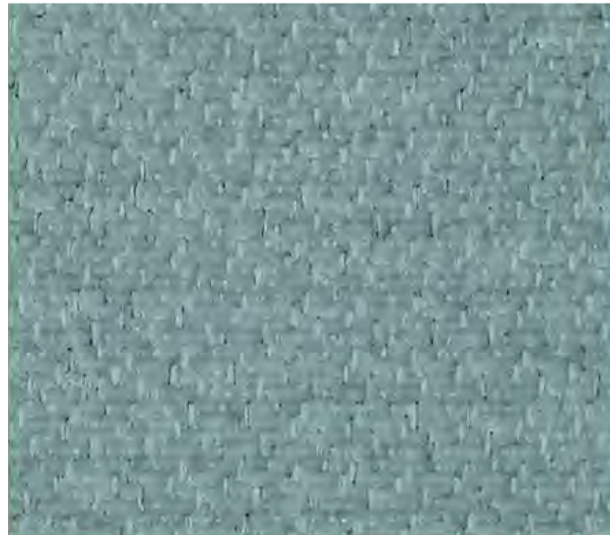
Water Green



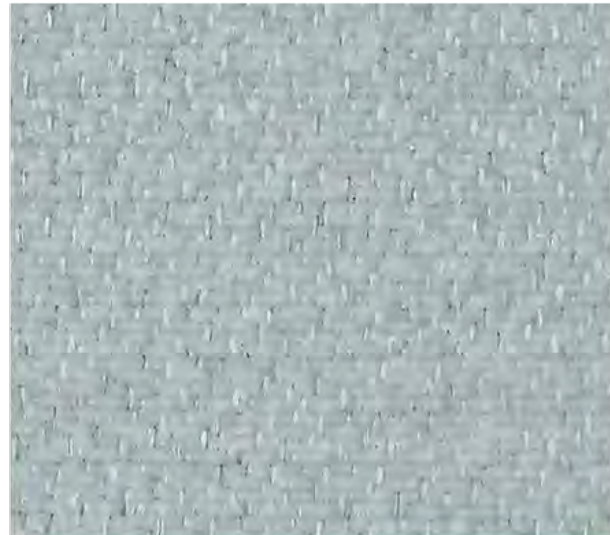
Emerald



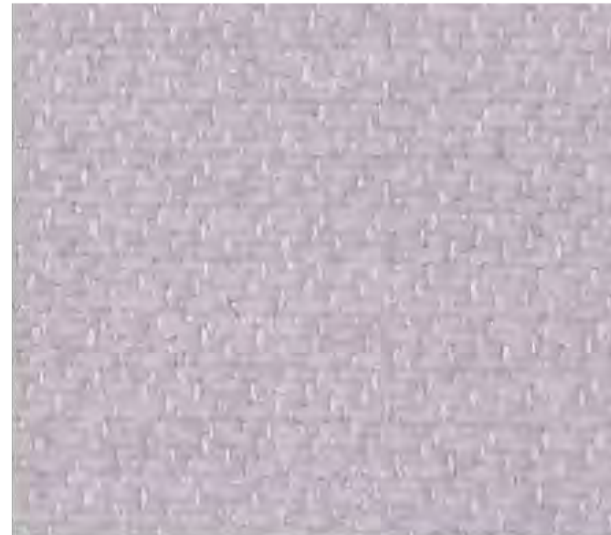
Petrol



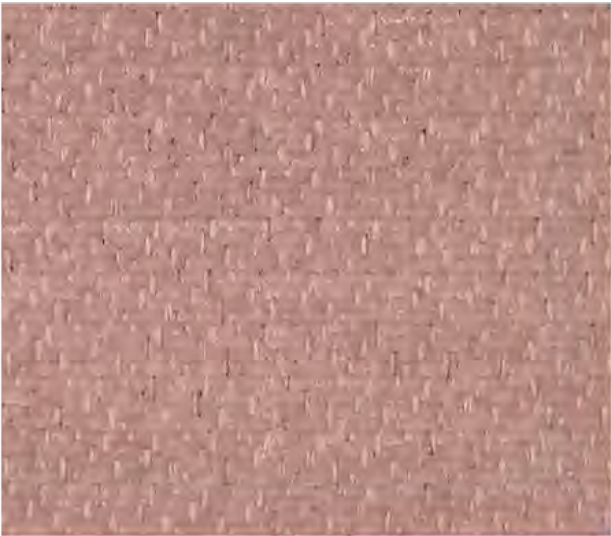
Safira



Ice



Lavanda



Old Rose



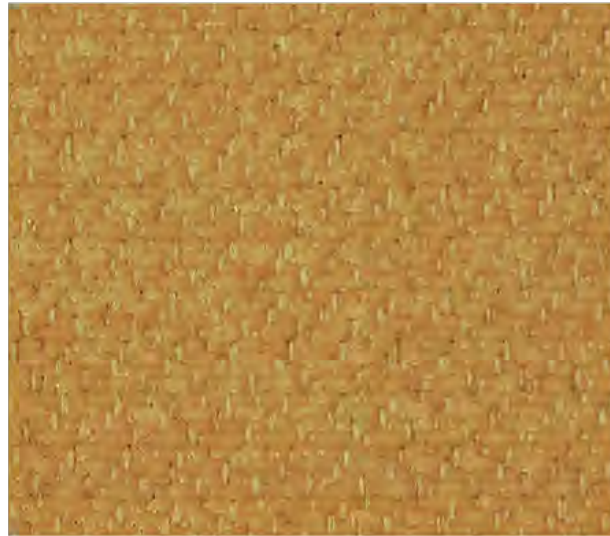
Marsala



Sienna



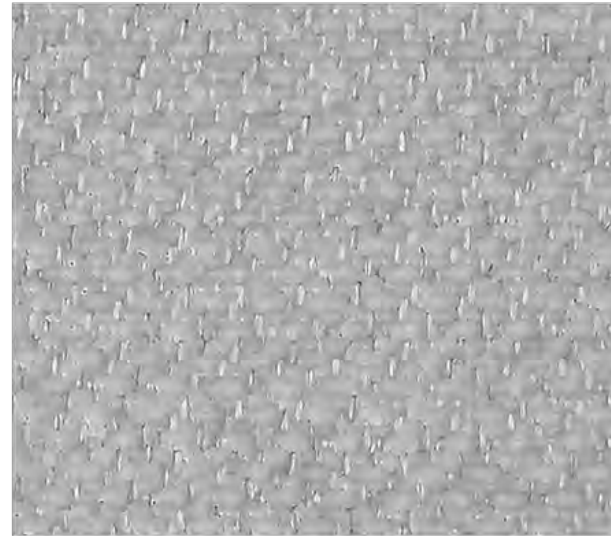
Chocolate



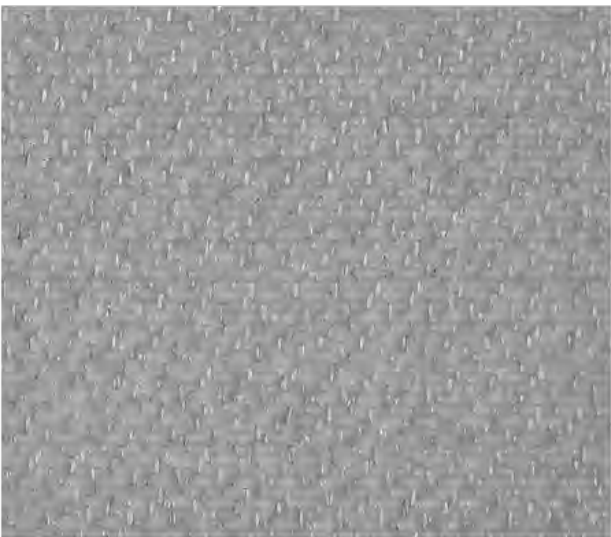
Mustaza



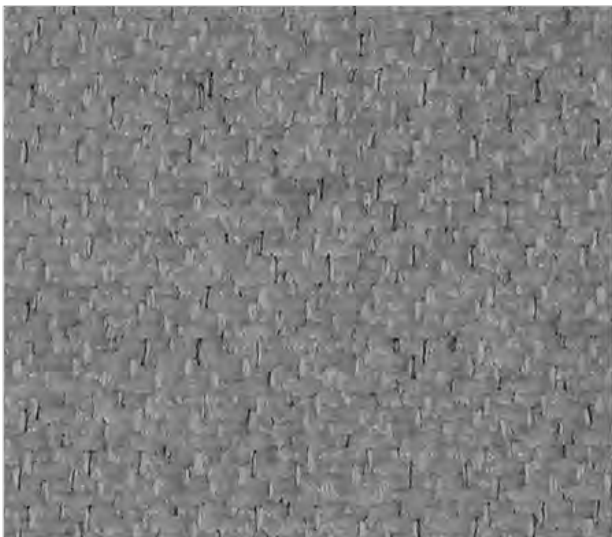
Beige



Cement



Taupe



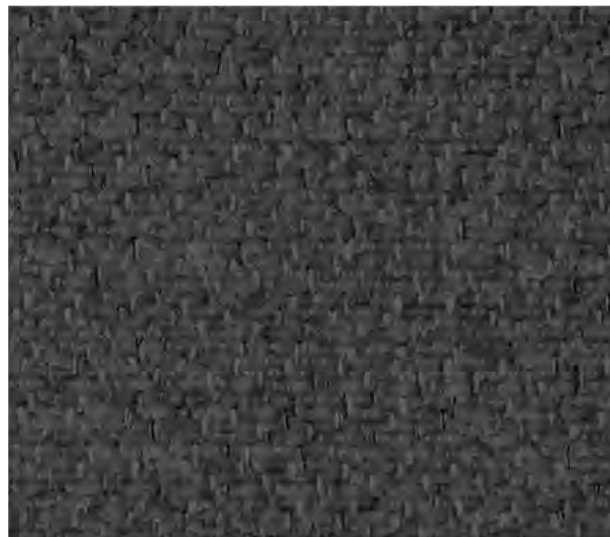
Steel



Ocean



Deep Blue



Anthracite



Black

VIENNA

FABRIC TYPE	COMPOSITION	DURABILITY	LIGHTFASTNESS	PILLING	FEATURES	FIRE TESTS
Chenille	100% Polyester	65,000 Martindale	5	4	Anti-Stain	BS 5852 part 1 - Cigarette Test PASS EN 1021-1 - Cigarette Test PASS CA Tech. Bull. 117:2013 / NFPA 260 - Cigarette Test PASS



BLUEWORLD[®]
HUMAN CARE TECHNOLOGY



STANDARD
100
9342CIT
CITEVE

Caution: the displayed colours, due to technical matters, are approximate and may differ from the original

Not all available fabrics and colours are listed on the site. Please contact us if you would like more information on available fabrics and colours.

Email: info@nue-modern.com

www.nue-modern.com