



# UPHOLSTERY OPTIONS

PALACE SOFA





APOLLO

FABRIC TYPE	COMPOSITION	DURABILITY	LIGHTFASTNESS	PILLING	FEATURES	FIRE TESTS
Chenille	100% Polyester	100,000 Martindale	4 - 5	4 - 5	Anti-Stain Liquid Repellent	BS 5852 part 1 - Cigarette Test PASS EN 1021-1 - Cigarette Test PASS CA Tech. Bull. 117:2013 / NFPA 260 - Cigarette Test PASS



STANDARD  
100  
9342CIT  
CITEVE

Caution: the displayed colours, due to technical matters, are approximate and may differ from the original





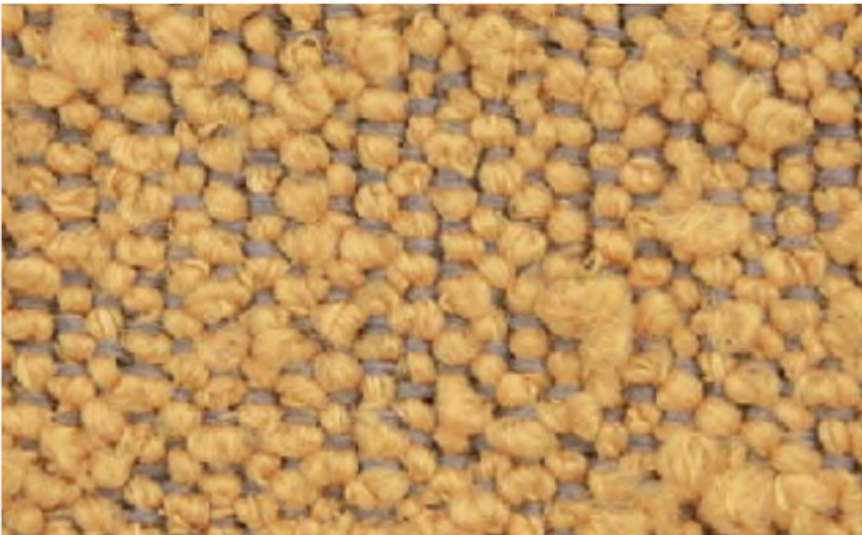
Nata



Pearl



Champagne



Mostaza



Brick



Pink



Toffee



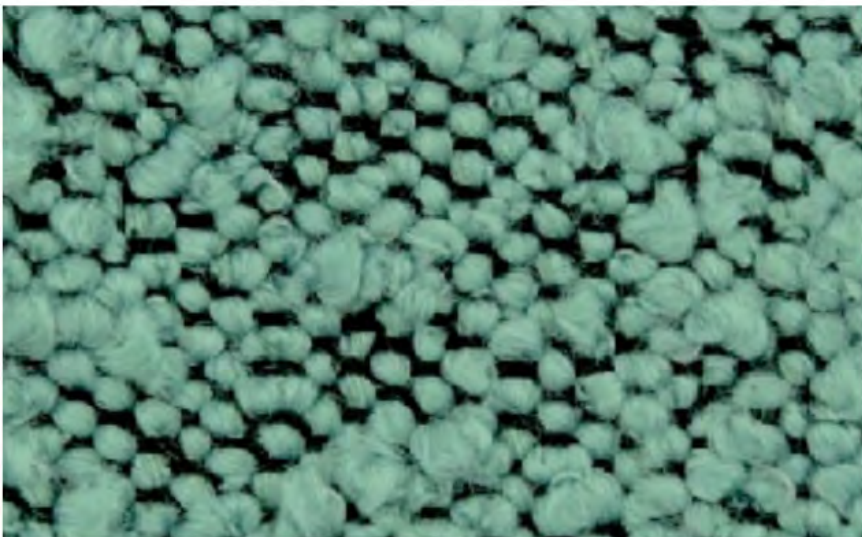
Taupe



Mouse



Olive Green



Safira



Atlantic



Graphite



Black

ASCOT

FABRIC TYPE	COMPOSITION	DURABILITY	LIGHTFASTNESS	PILLING	FIRE TESTS
Bouclé	100% Polyester	80,000 Martindale	5	4	BS 5852 part 1 - Cigarette Test PASS EN 1021-1 - Cigarette Test PASS CA Tech. Bull. 117:2013 / NFPA 260 - Cigarette Test PASS



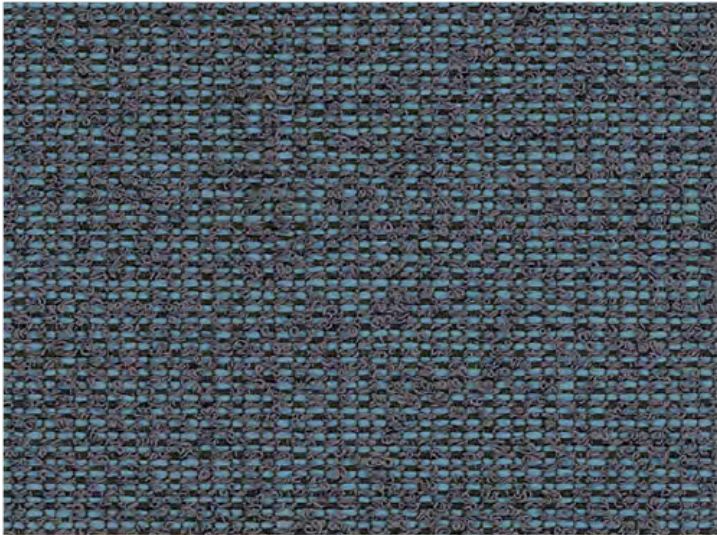
STANDARD  
100  
9342CIT  
CITEVE

Caution: the displayed colours, due to technical matters, are approximate and may differ from the original

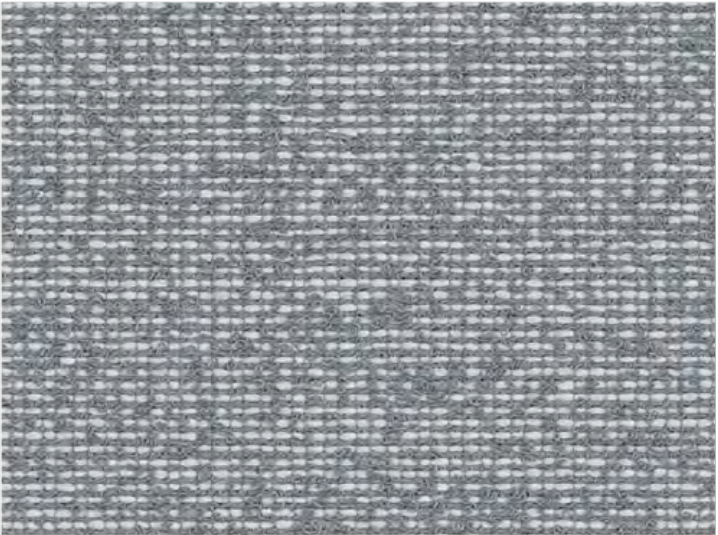




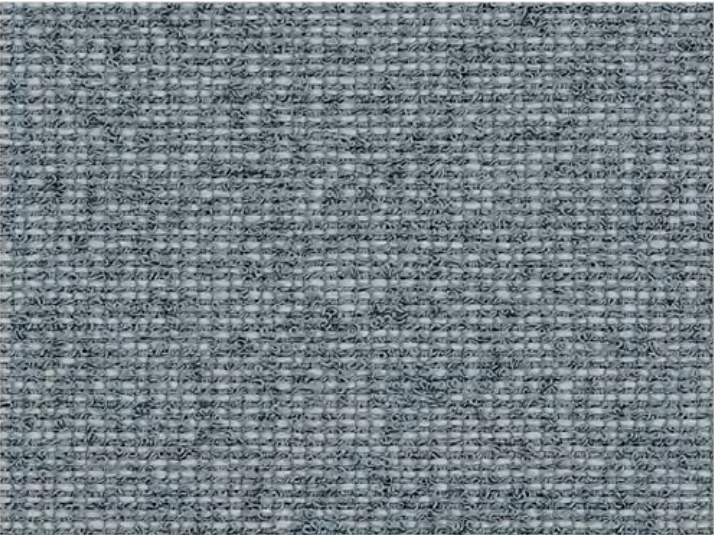
Saturation



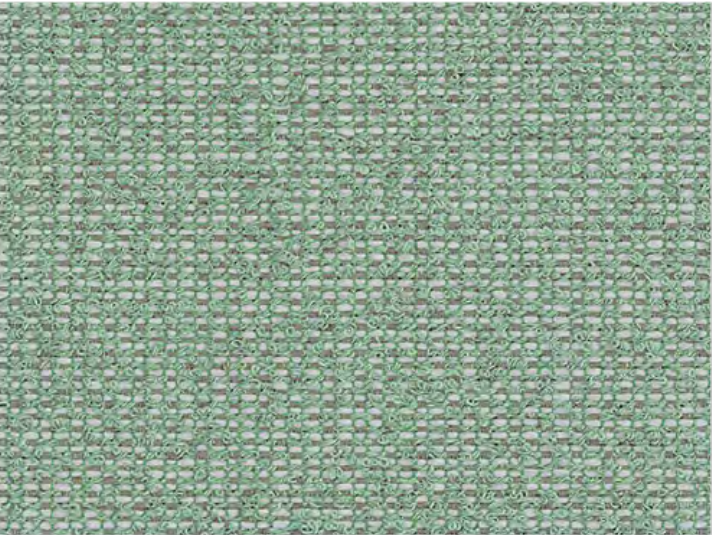
Tempera



Purity



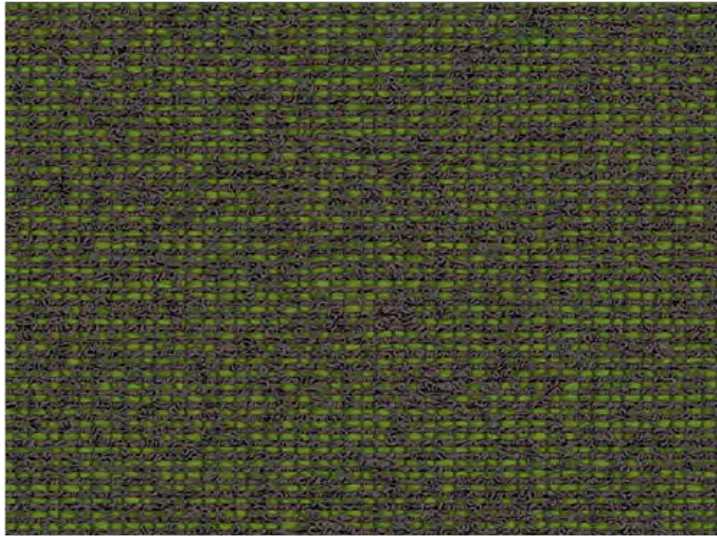
Prism



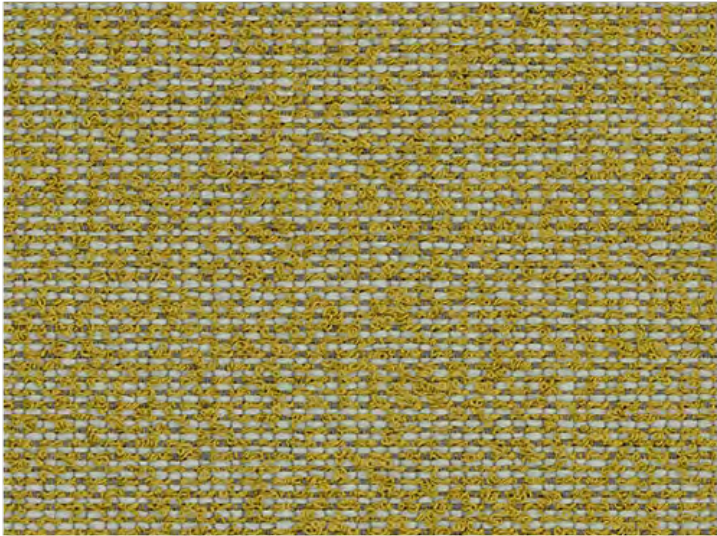
Gamut



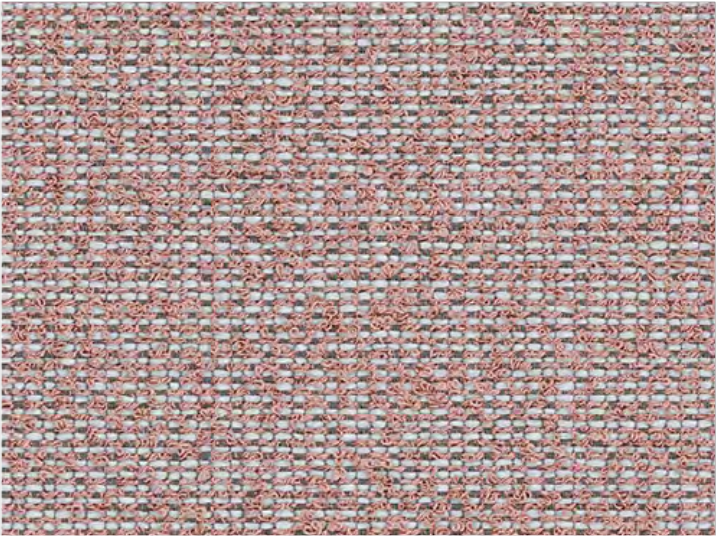
Tone



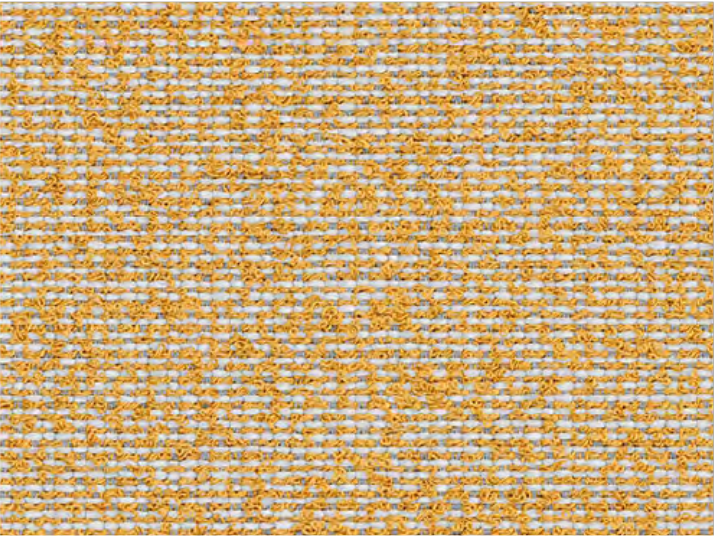
Goethe



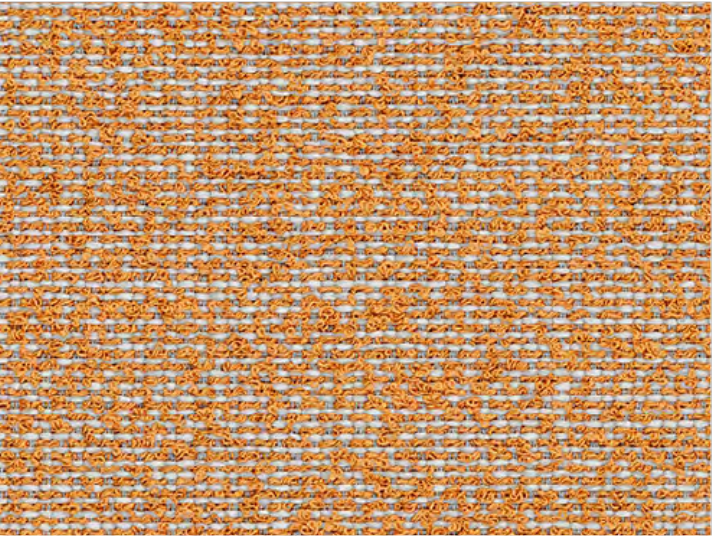
Hue



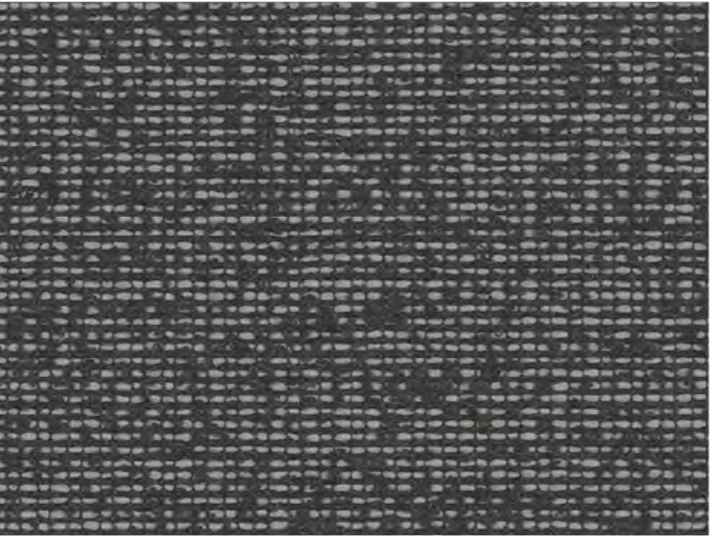
Pigment



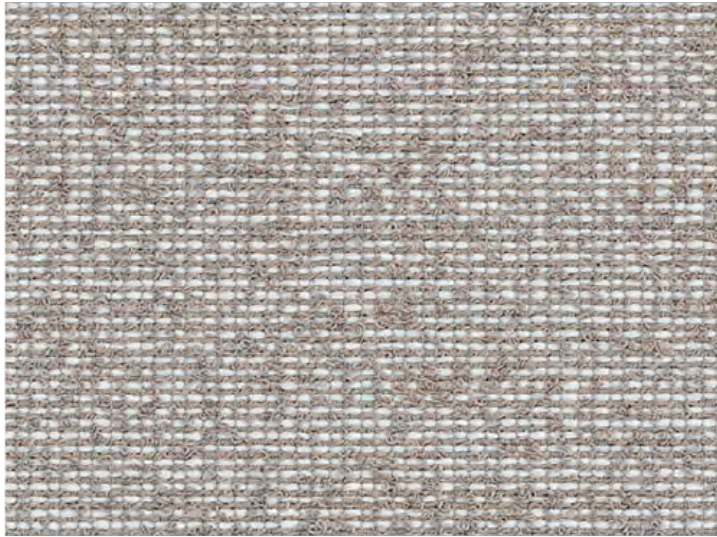
Glow



Newton



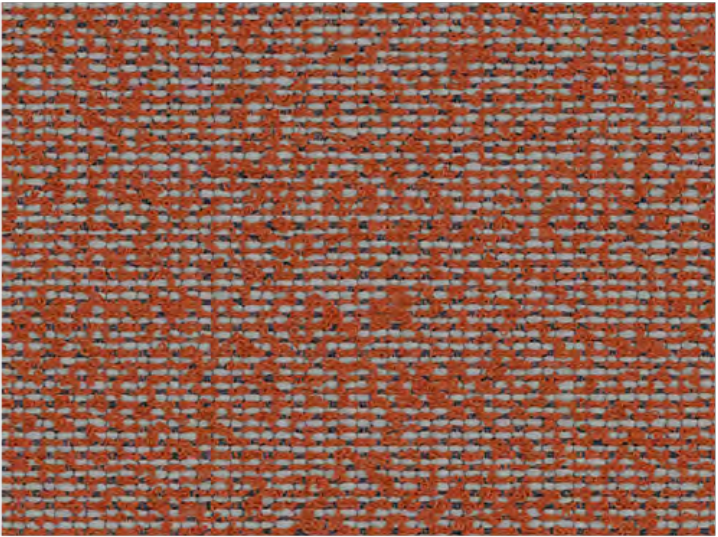
Dark



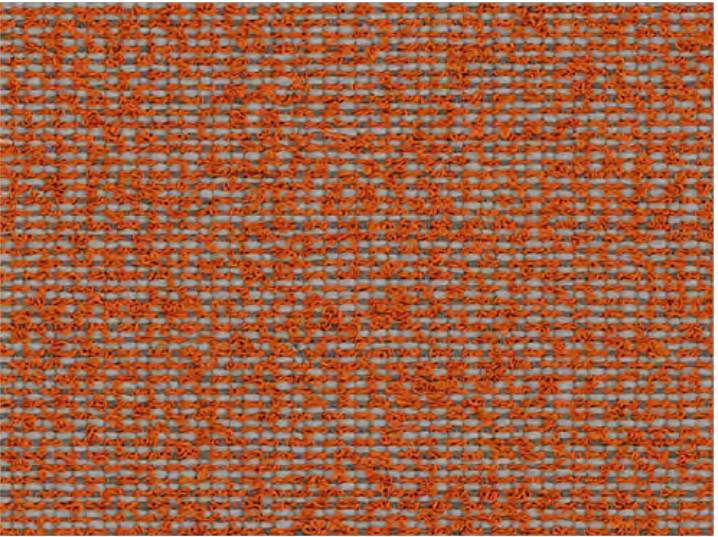
Hint



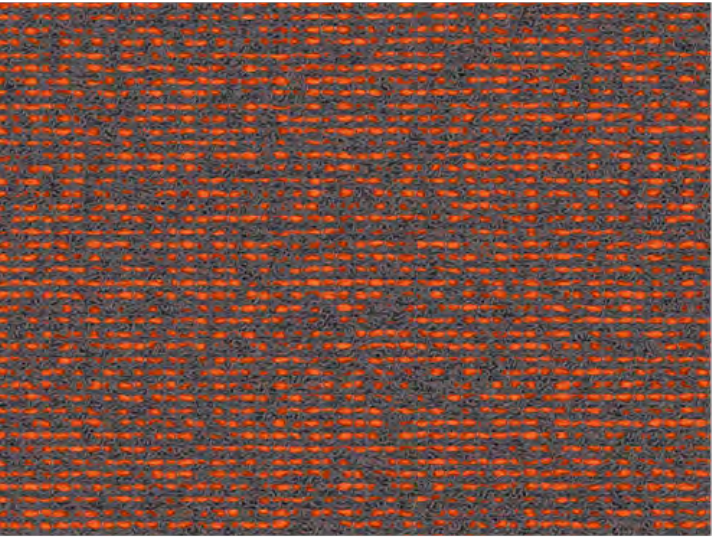
Trace



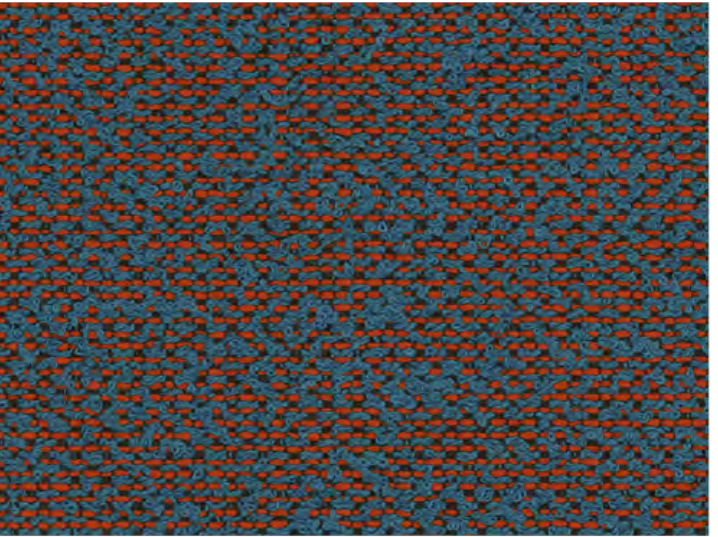
Render



Diad



Radiance



Harlequin

AUCKLAND  
By Vescom



FABRIC TYPE	COMPOSITION	DURABILITY	LIGHTFASTNESS	PILLING	FIRE TESTS
Bouclé	76% Recycled Polyester FR 24% Polyester FR	60,000 Martindale	6	4	EN 1021/1-2, Pass; BS 5852, Crib 5; NF P 92/503-507 or NF D 60-013, M1 DIN 4102, B1 Cal TB 117-2013, section 1, Pass; IMO 2010 FTP part 8, Pass; NFPA 260, Class 1

Caution: the displayed colours, due to technical matters, are approximate and may differ from the original





BALTIC

FABRIC TYPE	COMPOSITION	DURABILITY	LIGHTFASTNESS	PILLING	FEATURES	FIRE TESTS
Chenille	100% Polyester	35,000 Martindale	5	4	Anti-Stain	BS 5852 part 1 - Cigarette Test PASS EN 1021-1 - Cigarette Test PASS CA Tech. Bull. 117:2013 / NFPA 260 - Cigarette Test PASS



Caution: the displayed colours, due to technical matters, are approximate and may differ from the original





White



Sand



Pale Rose



Paprika



Cinnamon



Aqua



Pine



Hunter



Dark Forest



Fossil



Pebble



Dove



Stone



Shadow



Charcoal

# BOUCLÉ

FABRIC TYPE	COMPOSITION	DURABILITY	LIGHTFASTNESS	PILLING
Bouclé	100% Polyester	80,000 Martindale	3	4

Caution: the displayed colours, due to technical matters, are approximate and may differ from the original





Fog



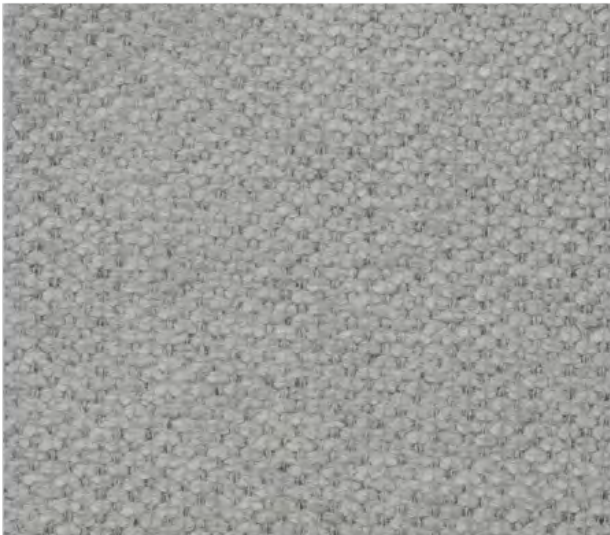
Peral



Beige



Mud



Cement



Tabac



Chocolate



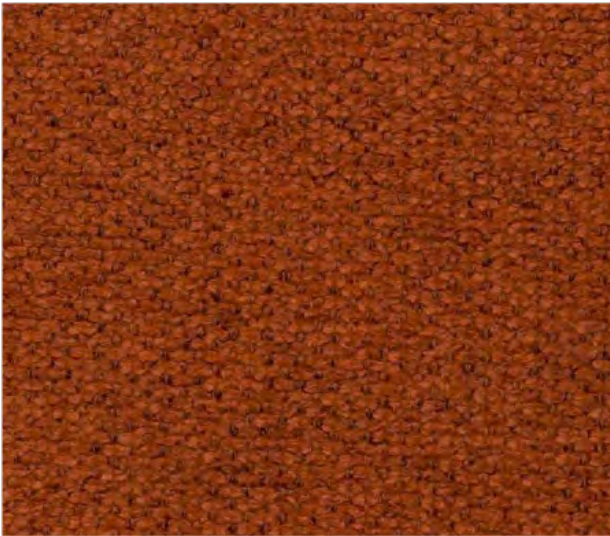
Camel



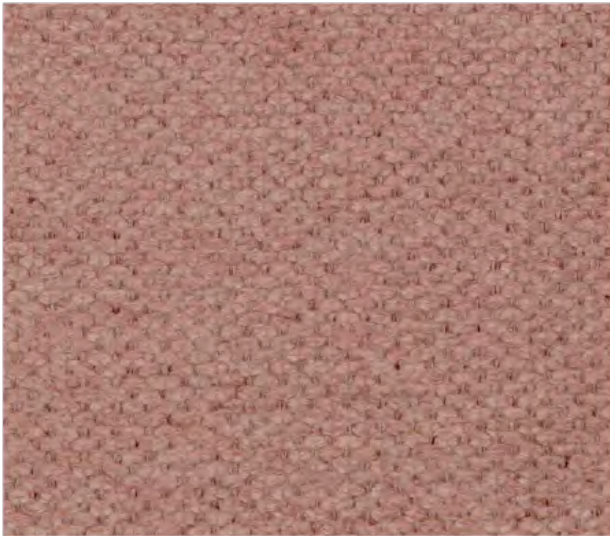
Truffle



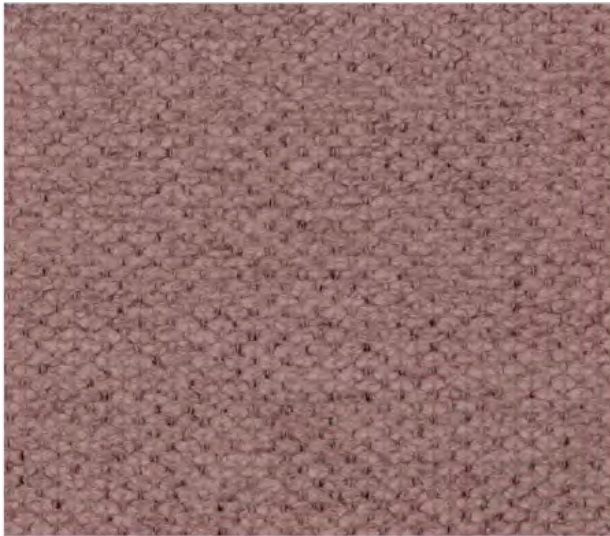
Mostaza



Brick



Coral



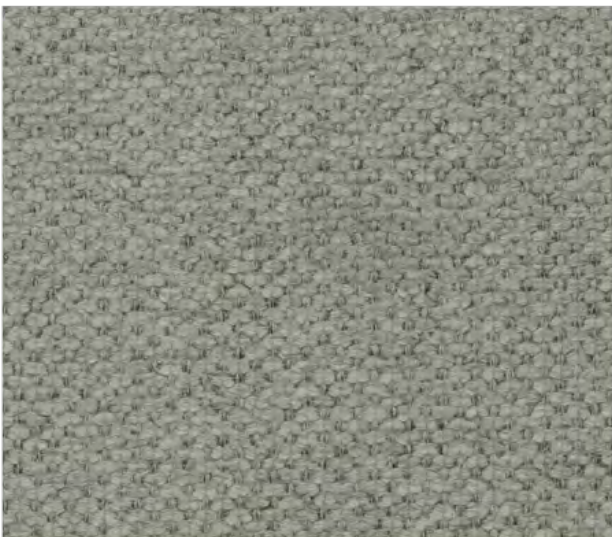
Rose



Bordeaux



Water Green



Ash



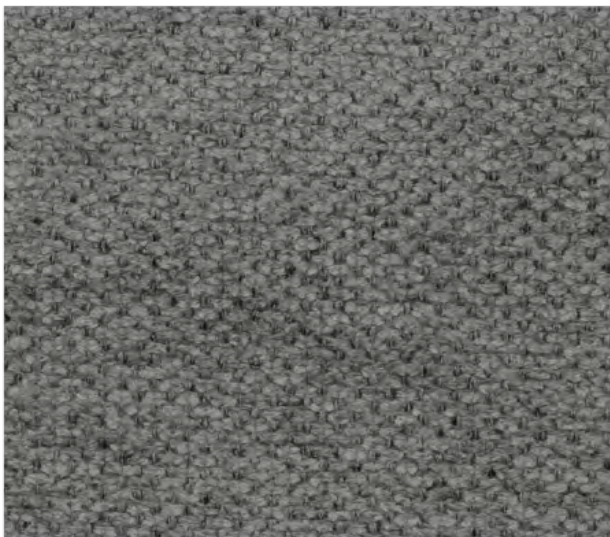
Bottle



Jeans



Ocean



Anthracite



Black

# BROOKLYN

FABRIC TYPE	COMPOSITION	DURABILITY	LIGHTFASTNESS	PILLING	FEATURES	FIRE TESTS
Chenille	94% Polyester + 6% Nylon	50,000 Martindale	3 -4	4 - 5	Anti-Stain	BS 5852 part 1 - Cigarette Test PASS EN 1021-1 - Cigarette Test PASS CA Tech. Bull. 117:2013 / NFPA 260 - Cigarette Test PASS



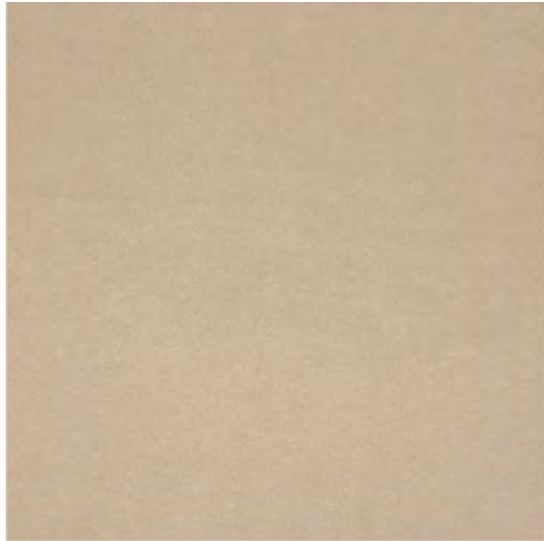
STANDARD  
100  
9342CIT  
CITEVE

Caution: the displayed colours, due to technical matters, are approximate and may differ from the original

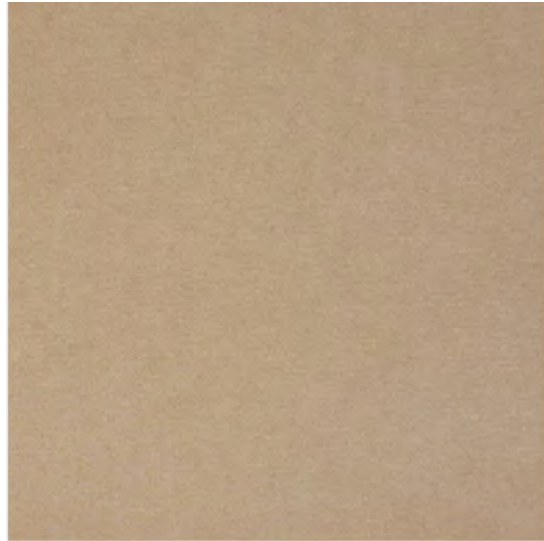




Pearl



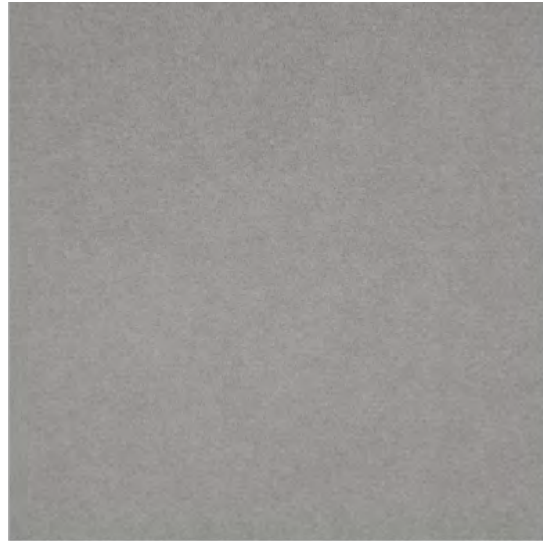
Beige



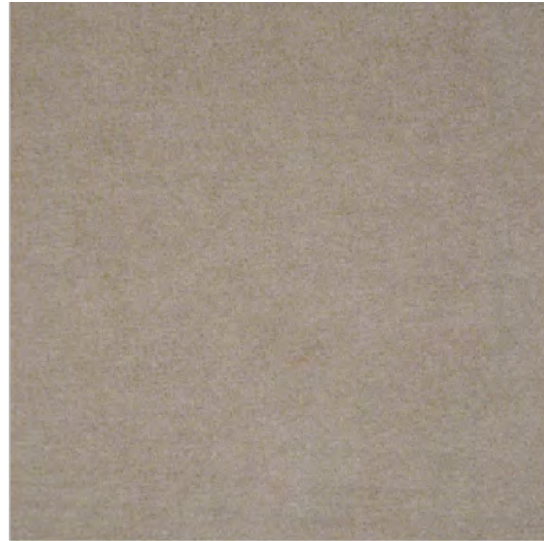
Lion



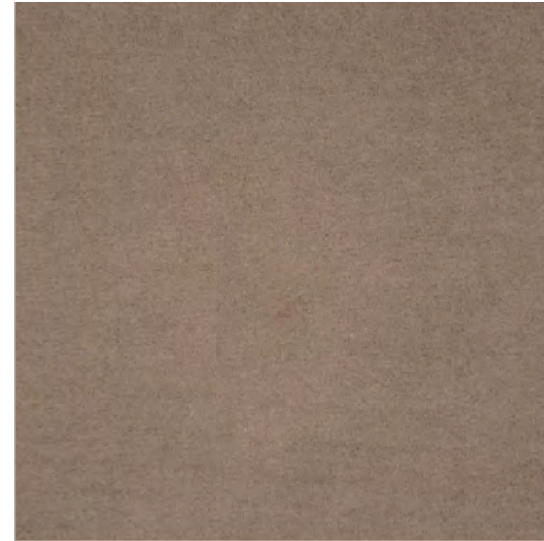
Fog



Stone



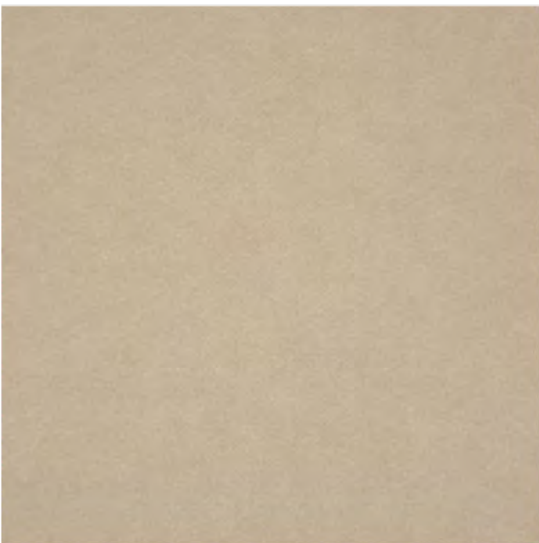
Elephant



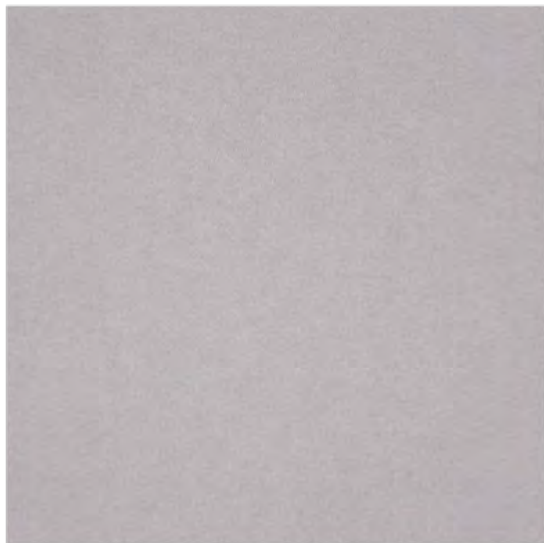
Taupe



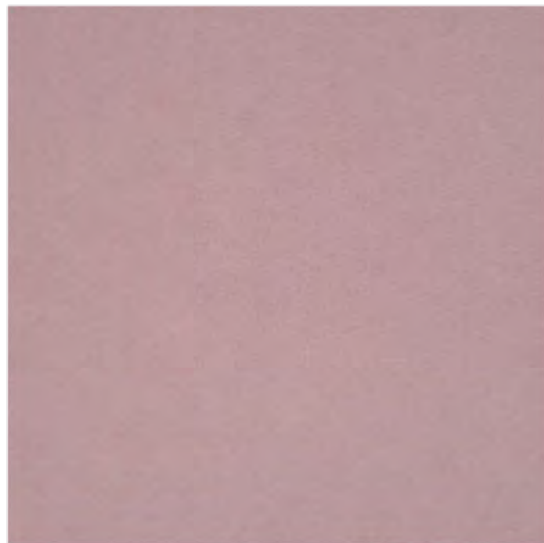
Ebony



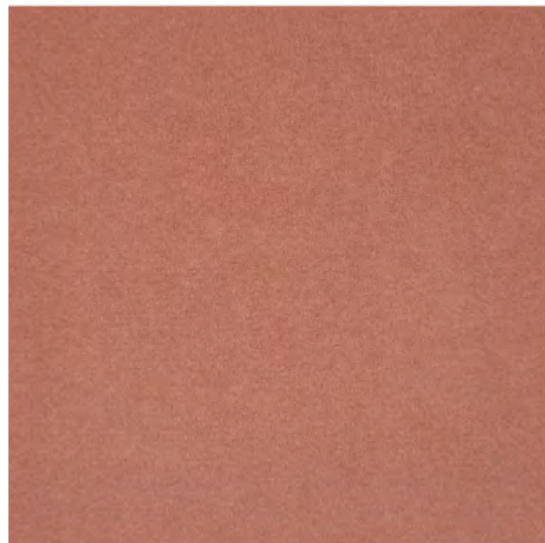
Sand



Light Violet



Pink



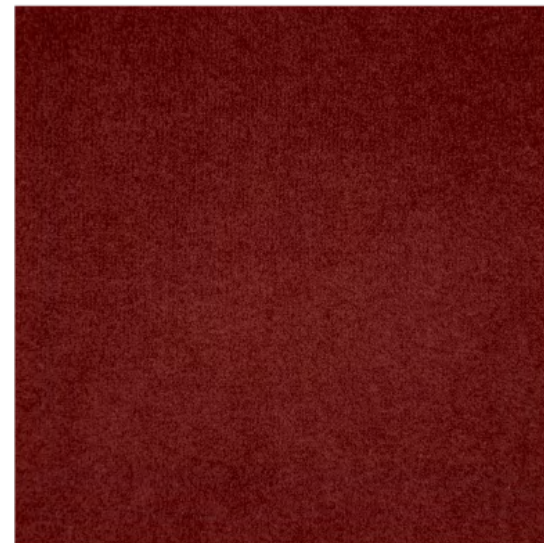
Salmon



Cuoio



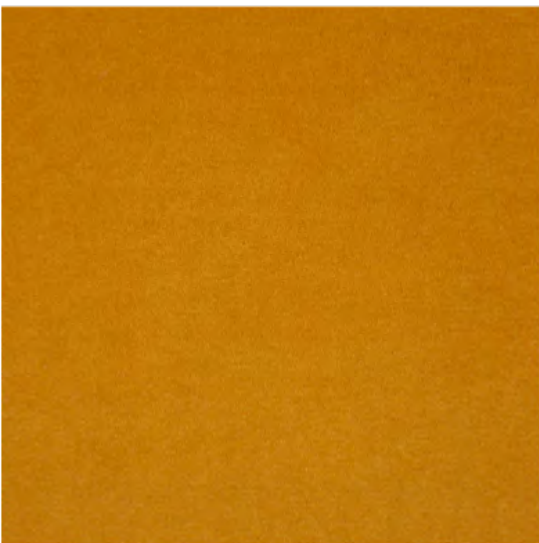
Terracotta



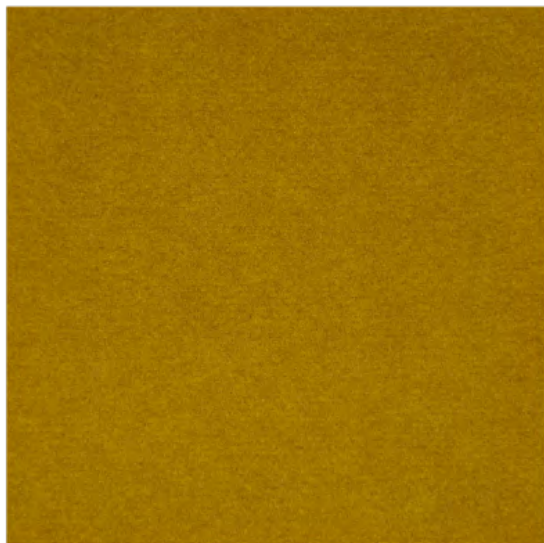
Marsala



Bordeaux



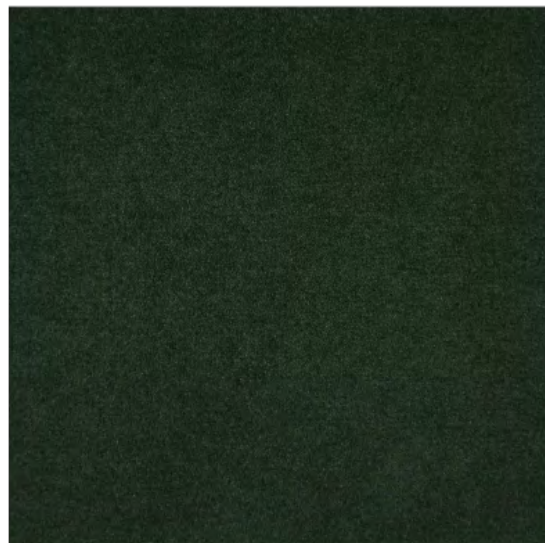
Mostaza



Olive



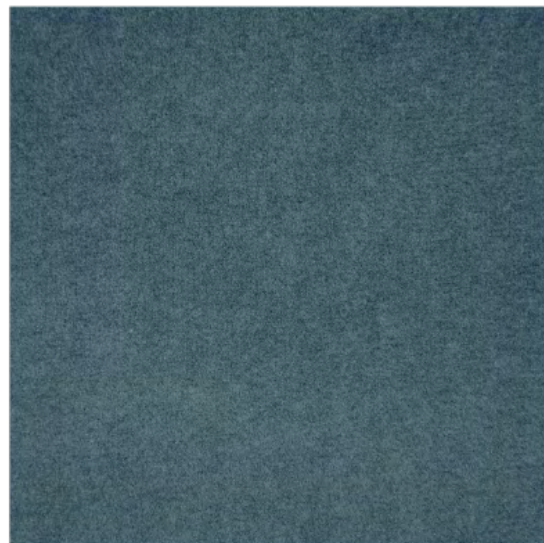
Forest



Deep Green



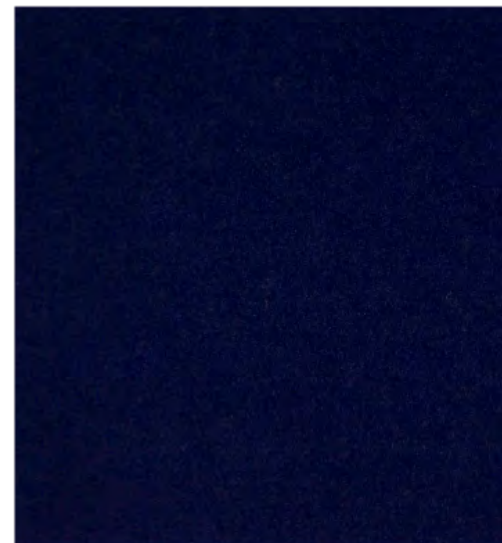
Safira



Dark Blue



Ocean



Deep Blue

# CASINO

FABRIC TYPE	COMPOSITION	DURABILITY	LIGHTFASTNESS	PILLING	FEATURES	FIRE TESTS
Velvet - Matte Finish	100% Polyester	100,000 Martindale	4 - 5	4 - 5	Anti-Stain Pet Friendly	BS 5852 part 1 - Cigarette Test PASS EN 1021-1 - Cigarette Test PASS CA Tech. Bull. 117:2013 / NFPA 260 - Cigarette Test PASS



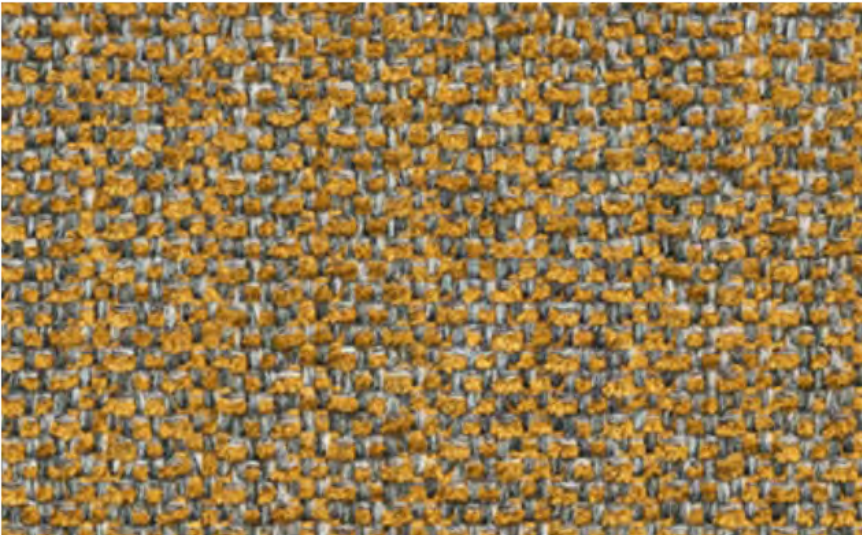
BLUEWORLD<sup>®</sup>  
HUMAN CARE TECHNOLOGY



STANDARD  
100  
9342CIT  
CITEVE

Caution: the displayed colours, due to technical matters, are approximate and may differ from the original

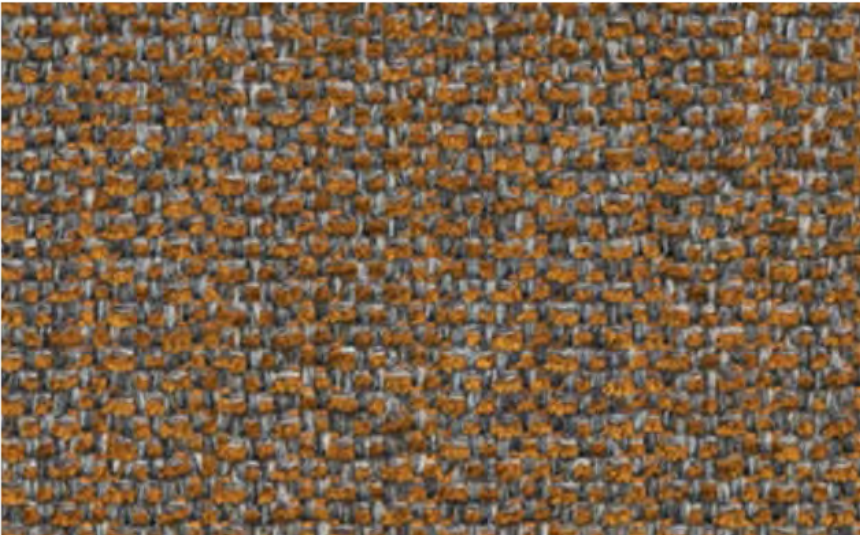




Fortress



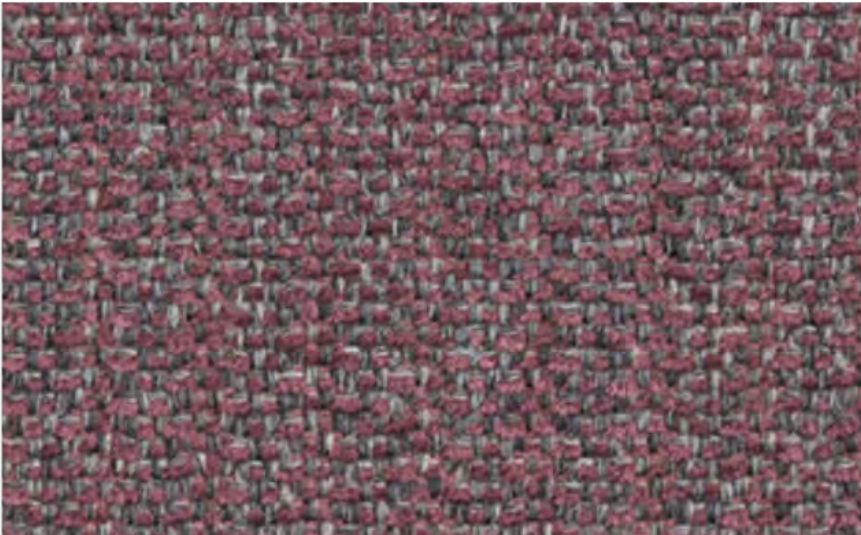
Beacon



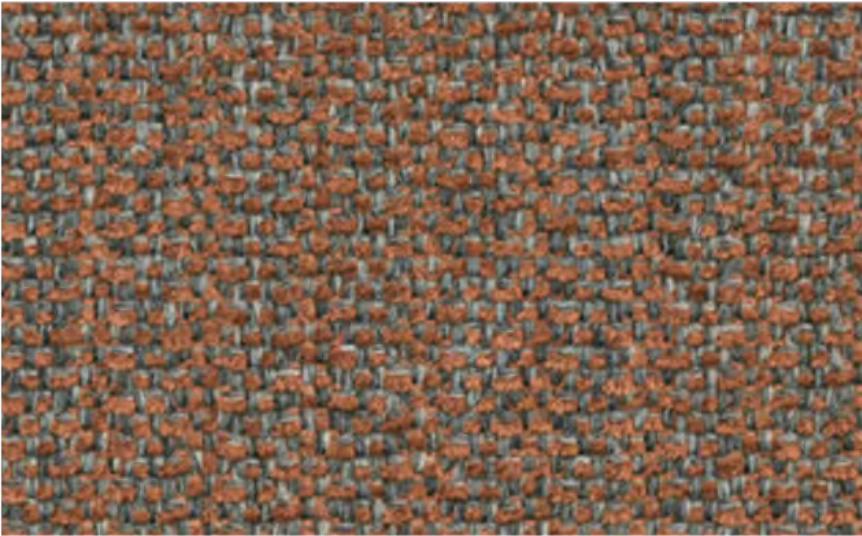
Redoubt



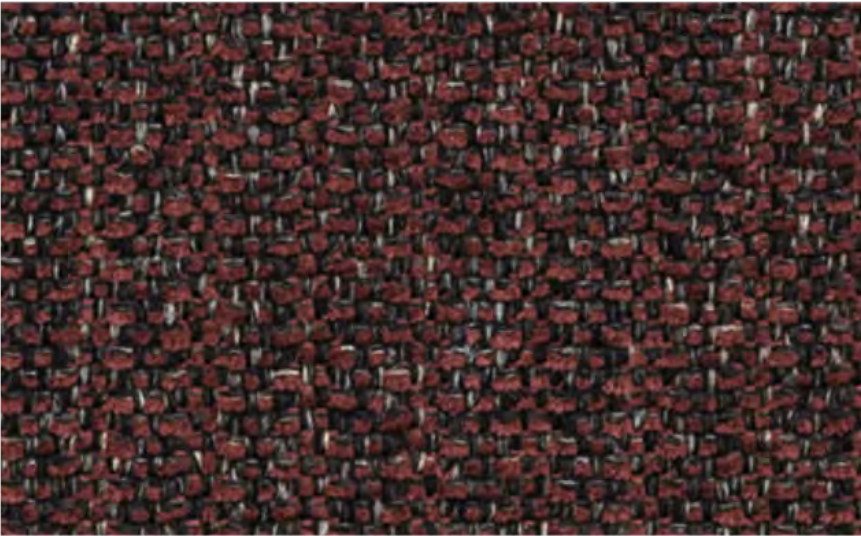
Drawbridge



Augusta



Hideaway



Hamilton



Resistance



Stillwater



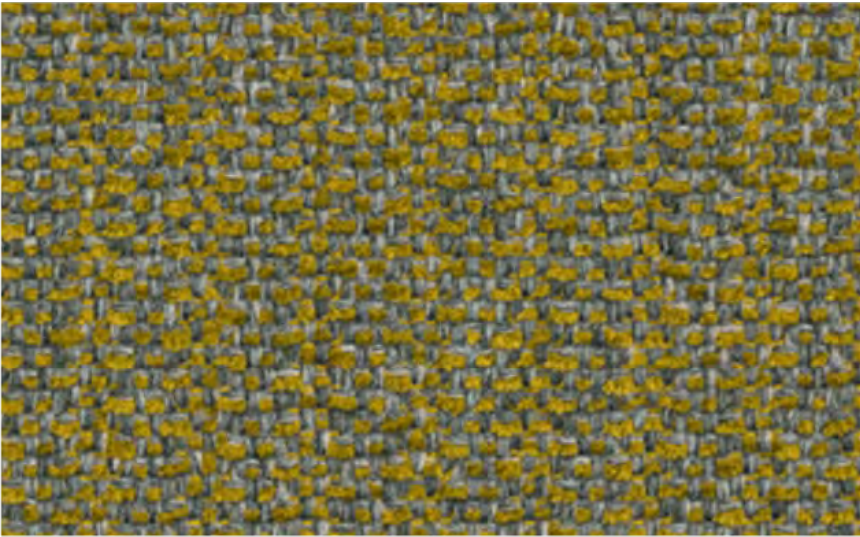
Confine



Craven



Ralstone



Bingham



Abide

# DIKSON

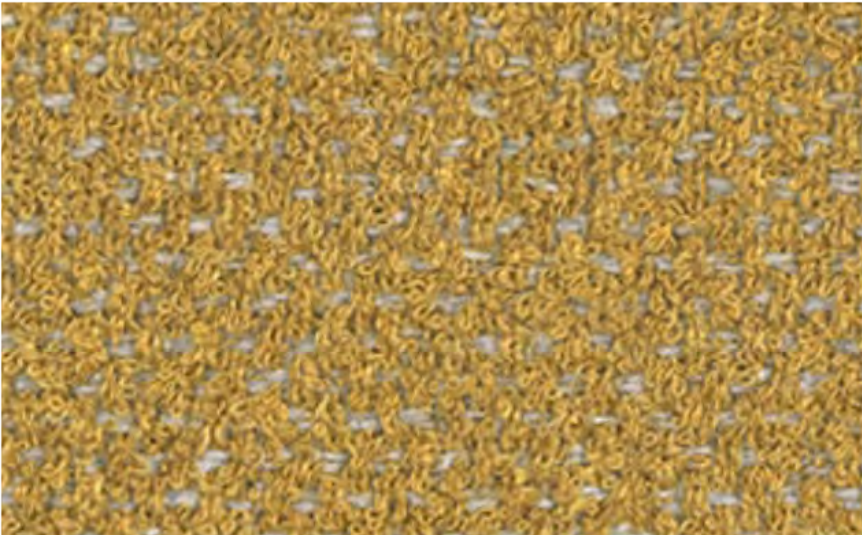
By Vescom



Caution: the displayed colours, due to technical matters, are approximate and may differ from the original

FABRIC TYPE	COMPOSITION	DURABILITY	LIGHTFASTNESS	PILLING	FIRE TESTS
Chenille	100% Polyester	100,000 Martindale	6	4 - 5	EN 1021/1-2, Pass; BS 5852, Crib 5; NF P 92/503-507 or NF D 60-013, M1 DIN 4102, B1 Cal TB 117-2013, section 1, Pass; IMO 2010 FTP part 8, Pass; NFPA 260, Class 1

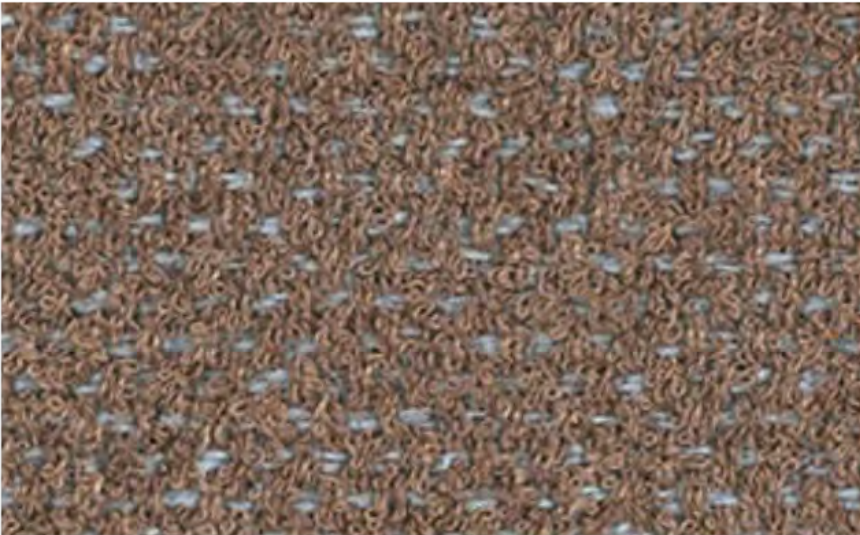




Caponex



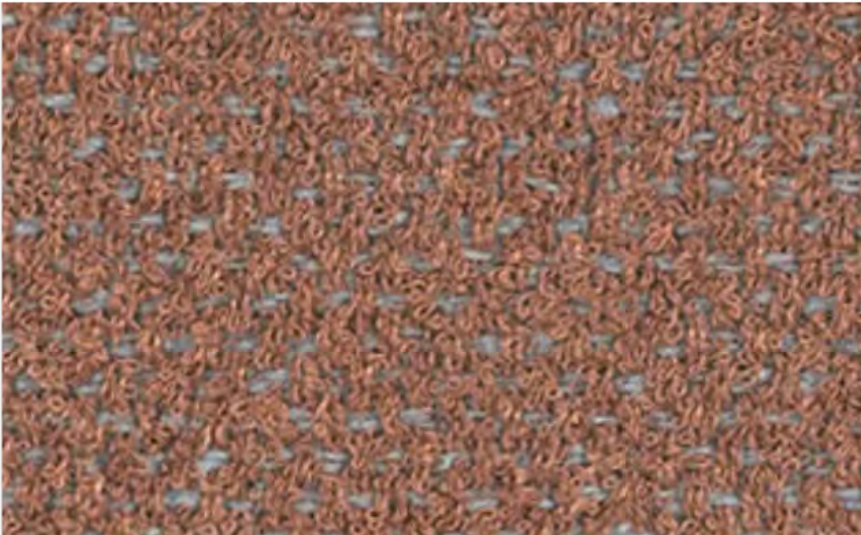
Palenque



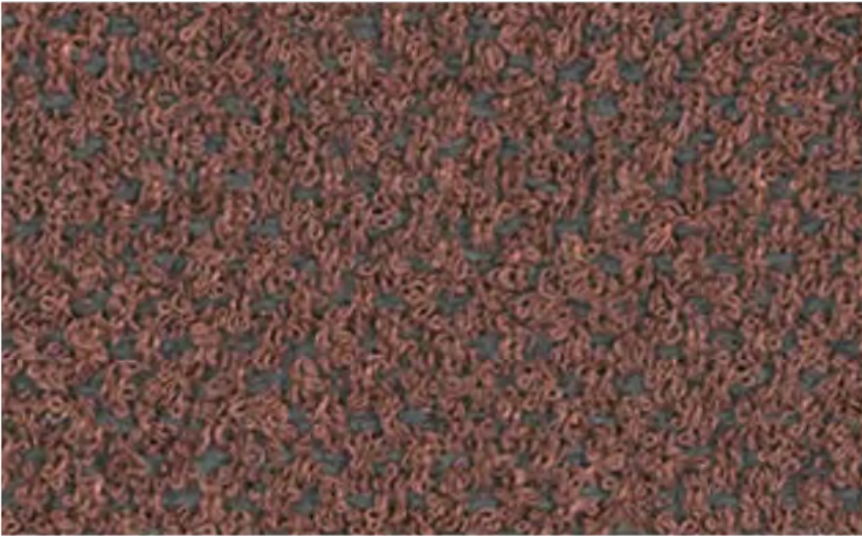
Gorkha



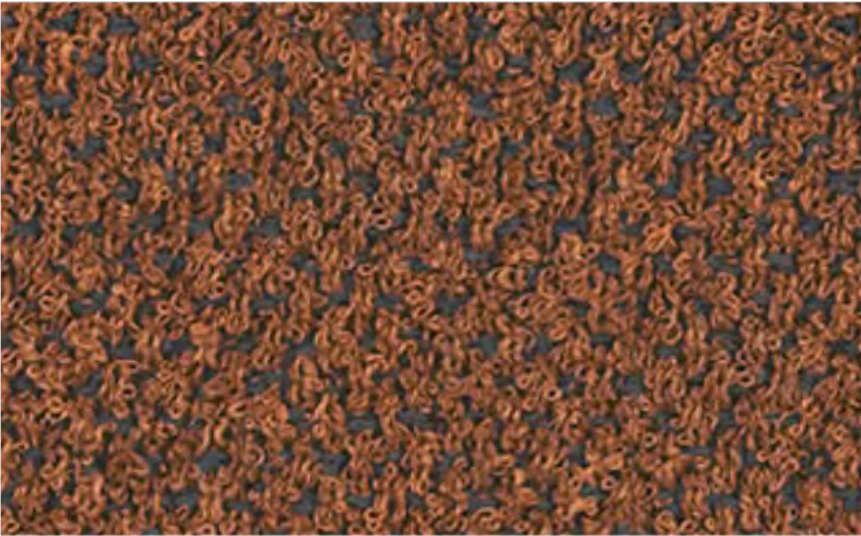
Petra



Meteora



Zion



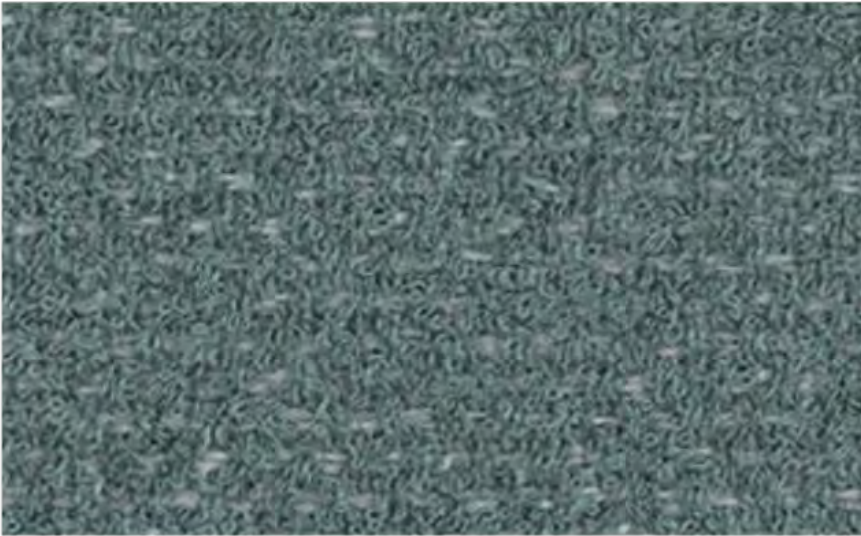
Marrakech



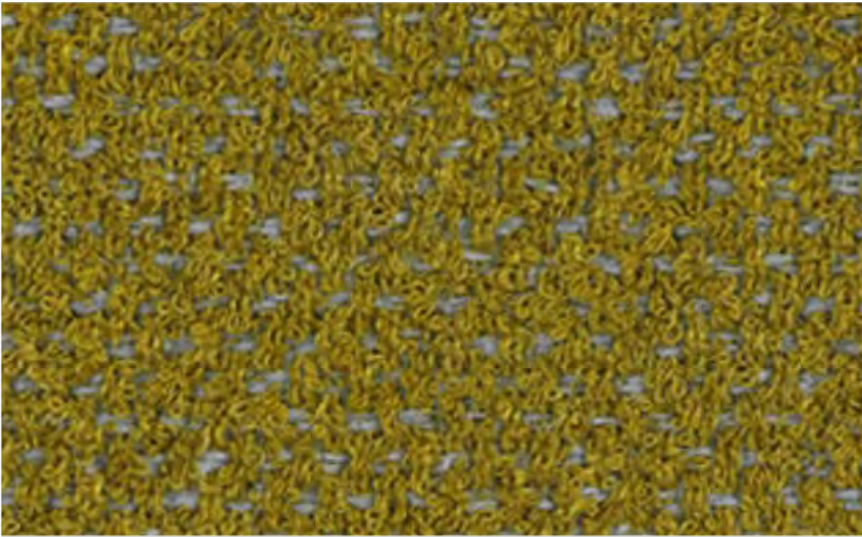
Dolomites



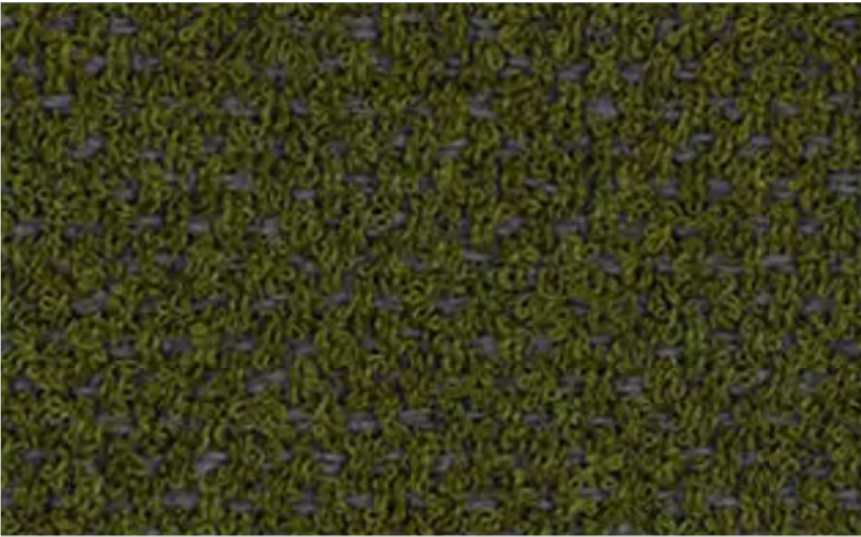
Halong



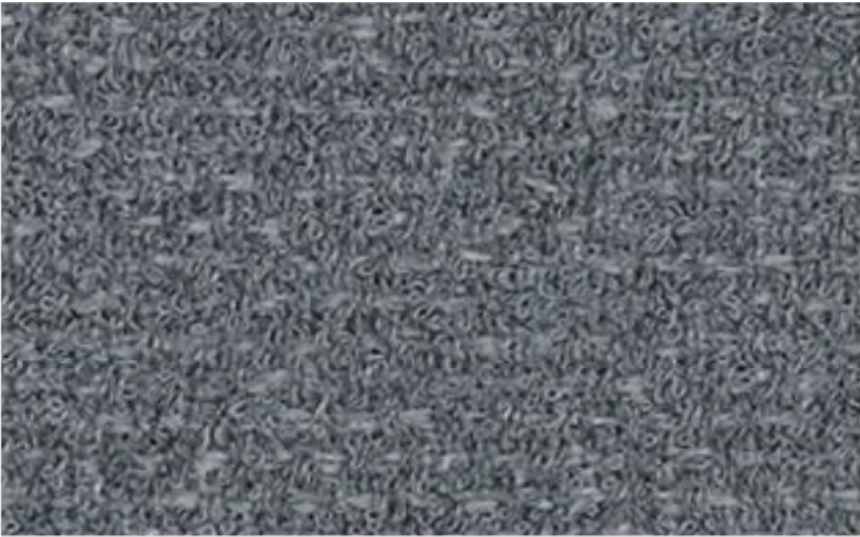
Molokai



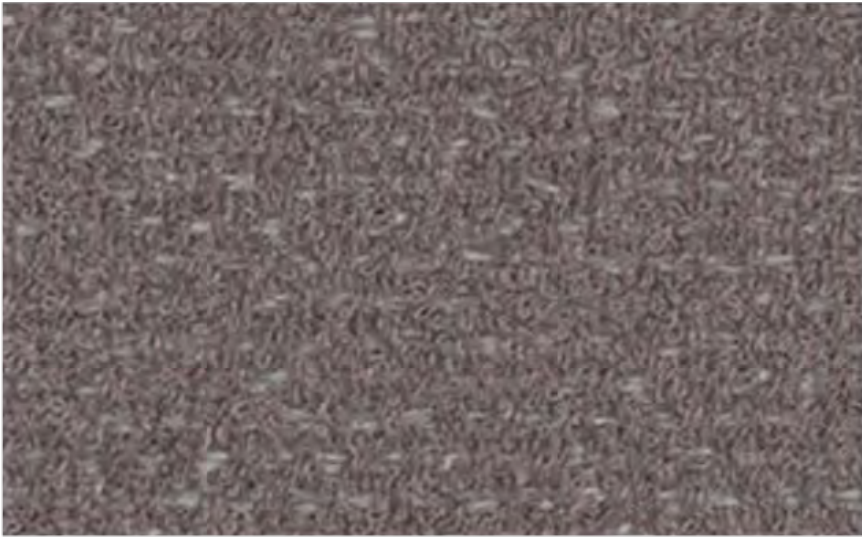
Yosemite



Patagonia



Rainer



Calabria



Malham

# FOSTER

By Vescom



Caution: the displayed colours, due to technical matters, are approximate and may differ from the original

FABRIC TYPE	COMPOSITION	DURABILITY	LIGHTFASTNESS	PILLING	FIRE TESTS
Bouclé	97% Recycled Polyester FR 3% Polyester FR	60,000 Martindale	6	4	EN 1021/1-2, Pass; BS 5852, Crib 5; NF P 92/503-507 or NF D 60-013, M1 DIN 4102, B1 Cal TB 117-2013, section 1, Pass; IMO 2010 FTP part 8, Pass; NFPA 260, Class 1





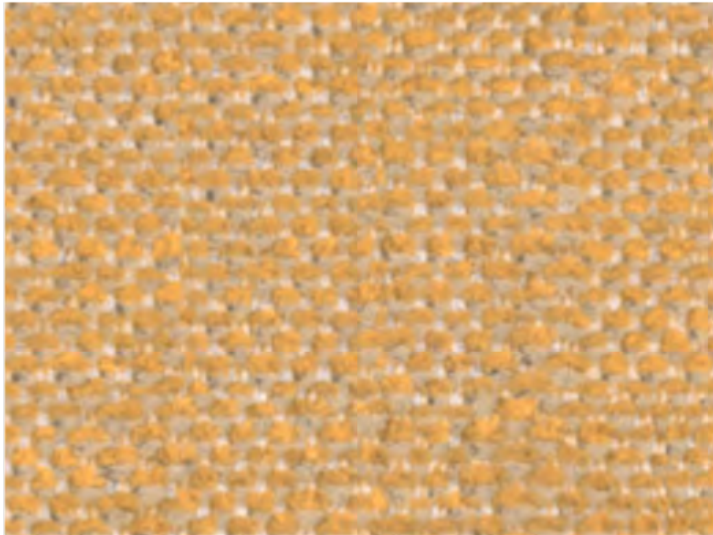
Vit



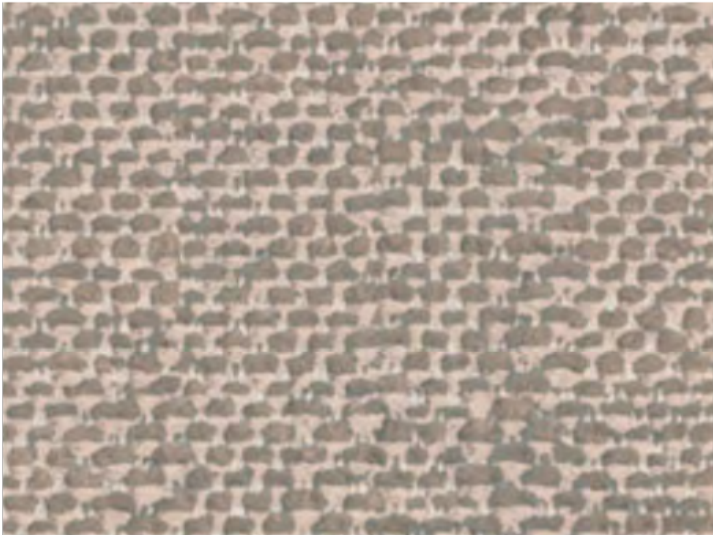
Clan



Shetland



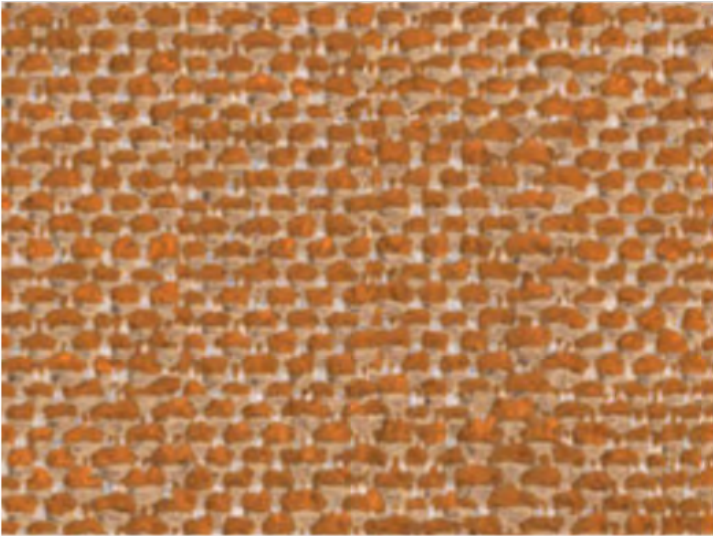
Lora



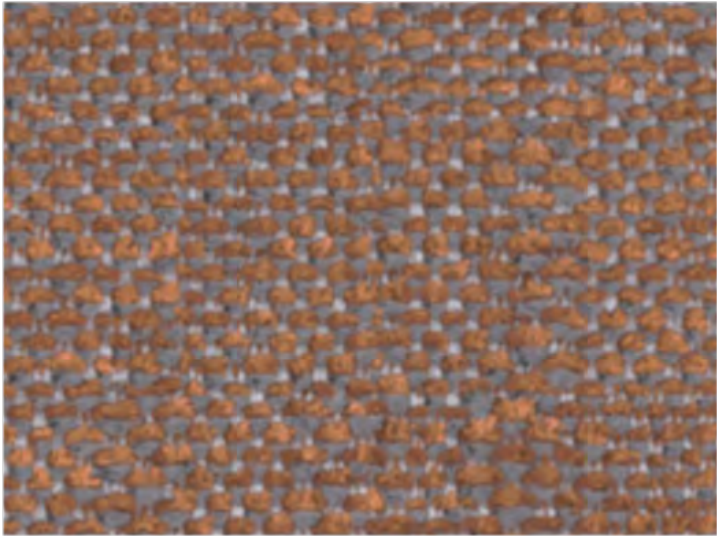
Hillswick



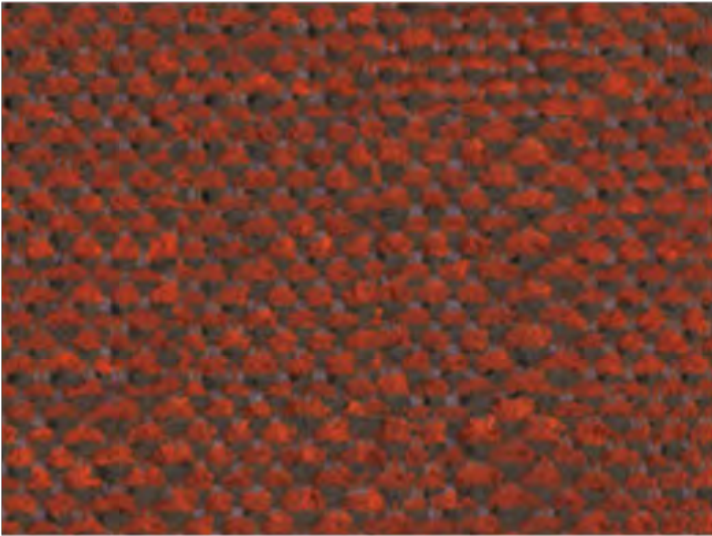
Dolphin



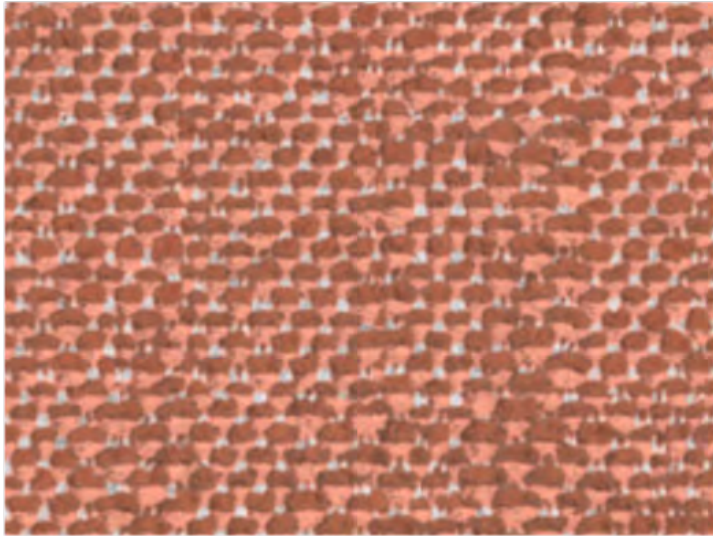
Lomond



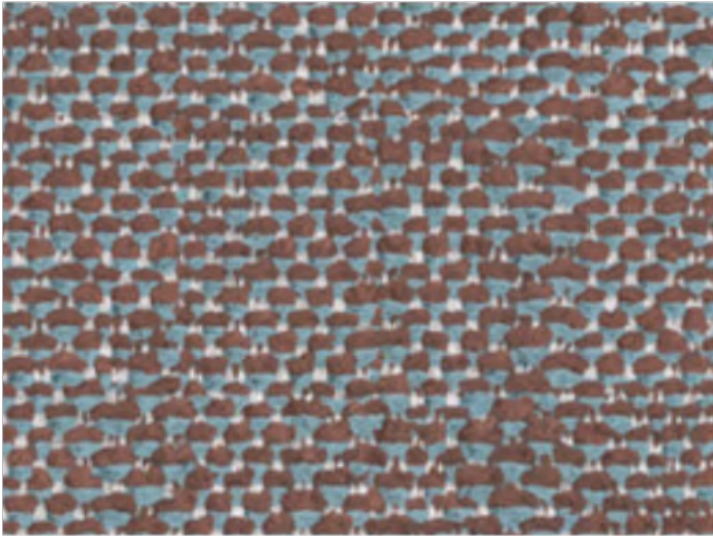
Austen



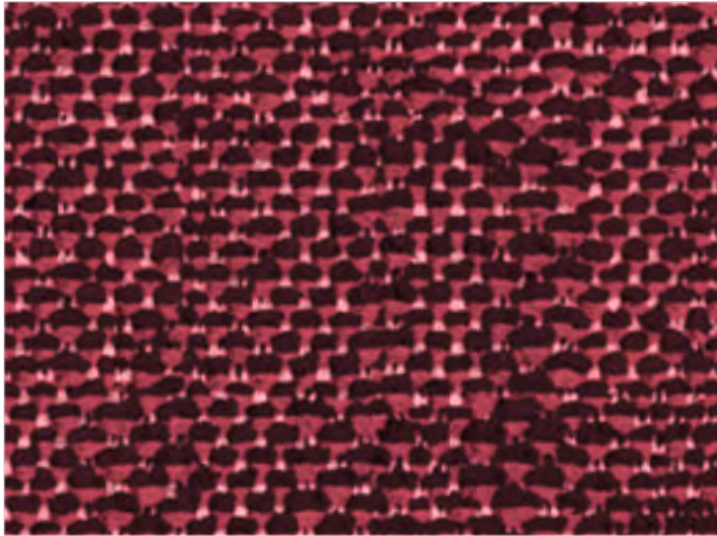
Pitlochry



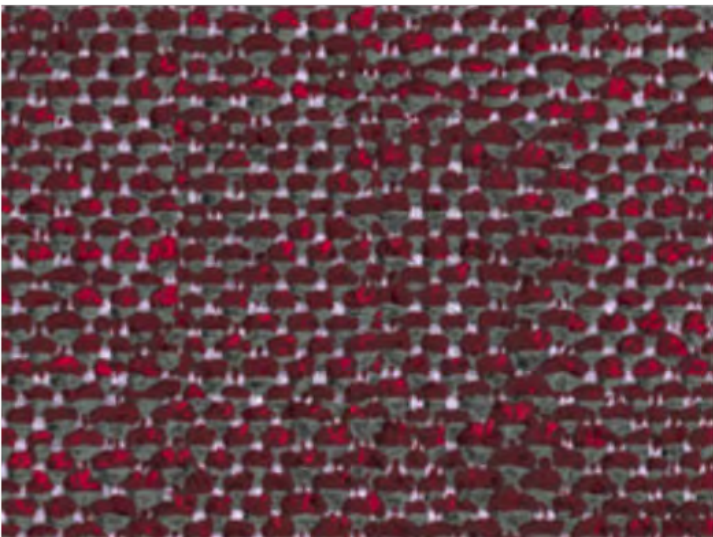
Maree



Denny



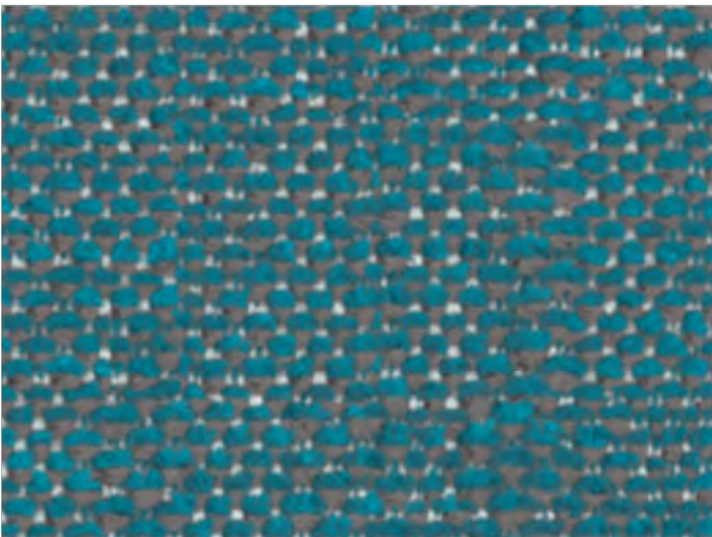
Tummel



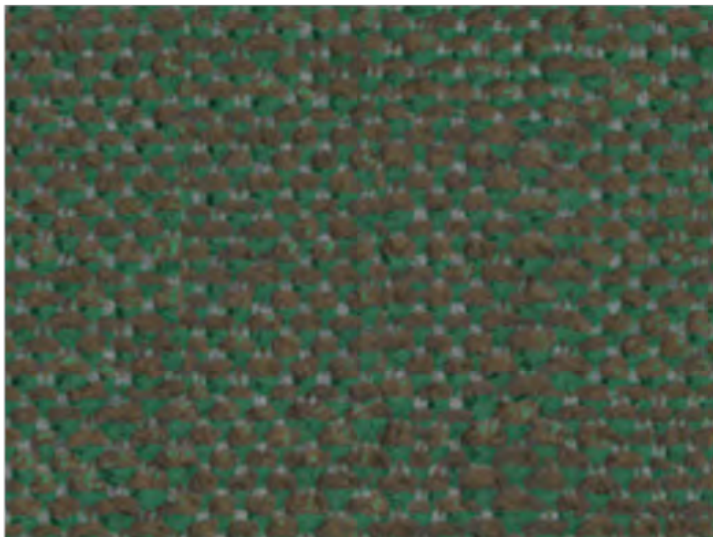
Lossie



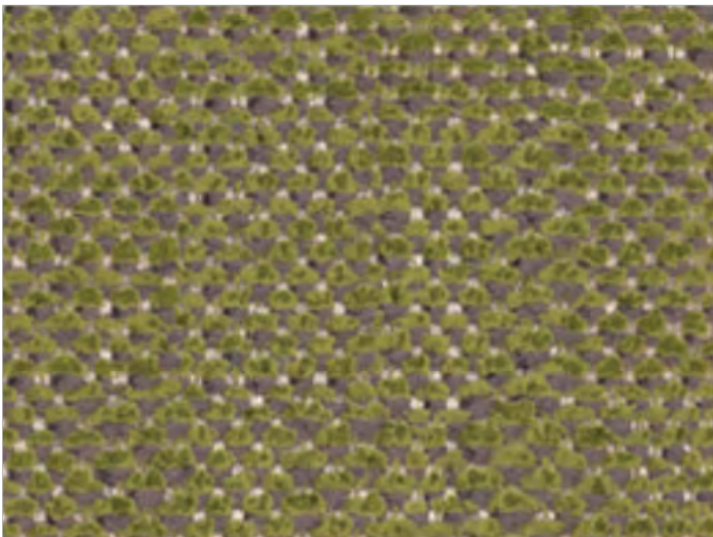
Adriatic



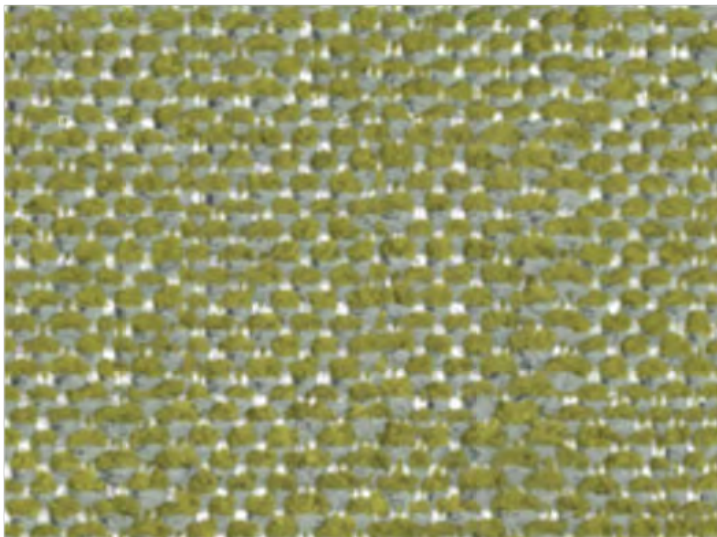
Inverness



Carron



Staffa



Fair Isle

# FUGA

By Vescom



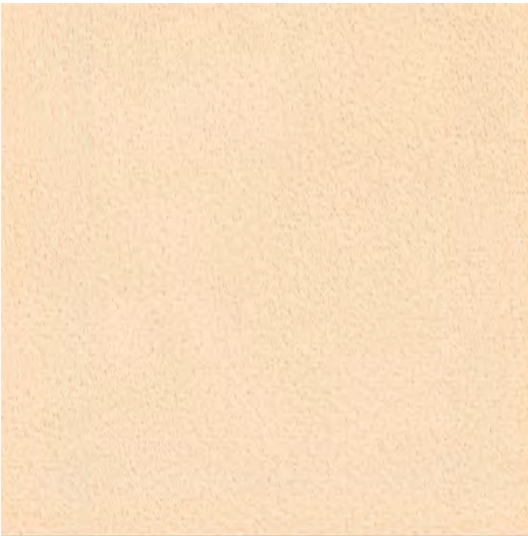
Caution: the displayed colours, due to technical matters, are approximate and may differ from the original

FABRIC TYPE	COMPOSITION	DURABILITY	LIGHTFASTNESS	PILLING	FIRE TESTS
Chenille	79% Recycled Polyester FR 21% Polyester FR	70,000 Martindale	6 - 7	4 - 5	EN 1021/1-2, Pass; BS 5852, Crib 5; NF P 92/503-507 or NF D 60-013, M1 DIN 4102, B1 Cal TB 117-2013, section 1, Pass; IMO 2010 FTP part 8, Pass; NFPA 260, Class 1

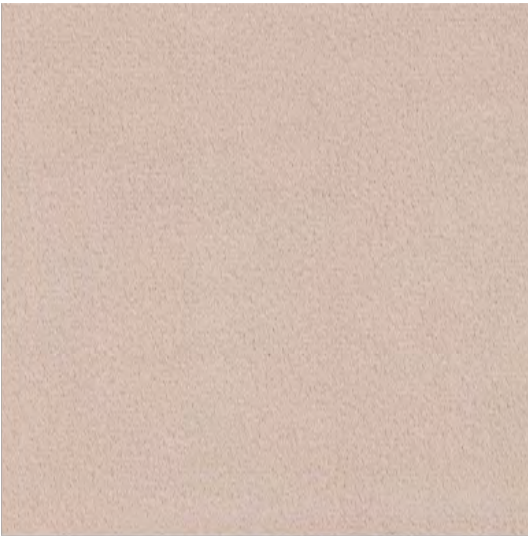




Milk



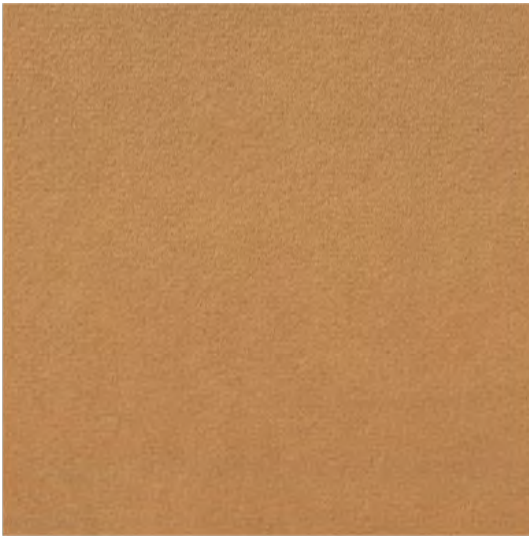
Cream



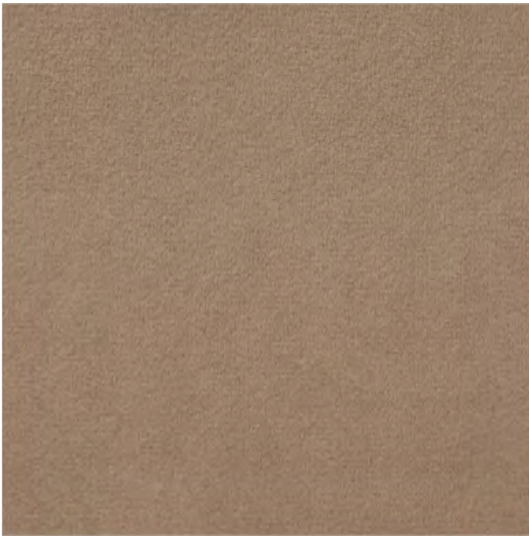
Warm Grey



Sand



Camel



Taupe



Mink



Ebony



Mostaza



Masai



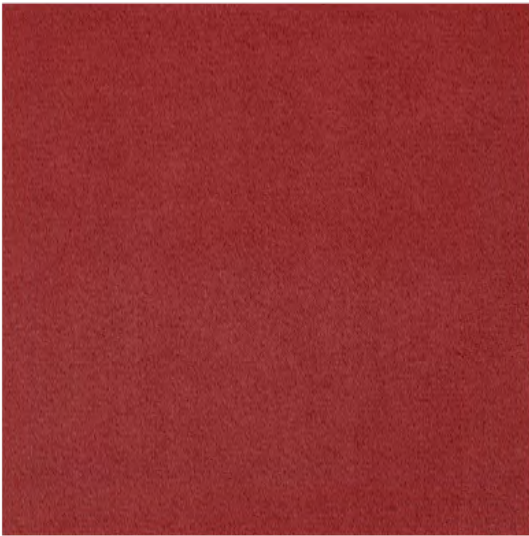
Copper



Rust



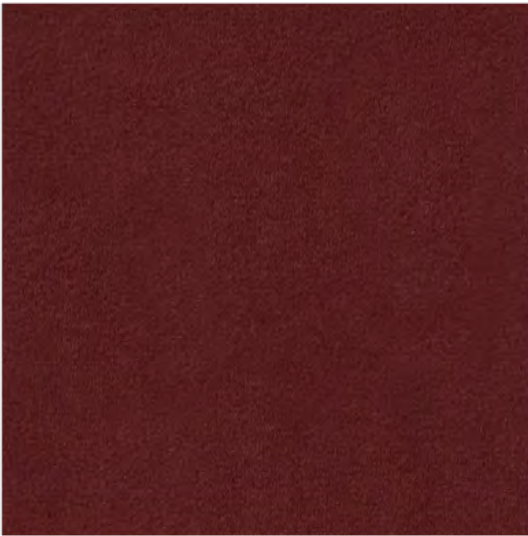
Mauve



Marsala



Red



Bourdeaux



Cement



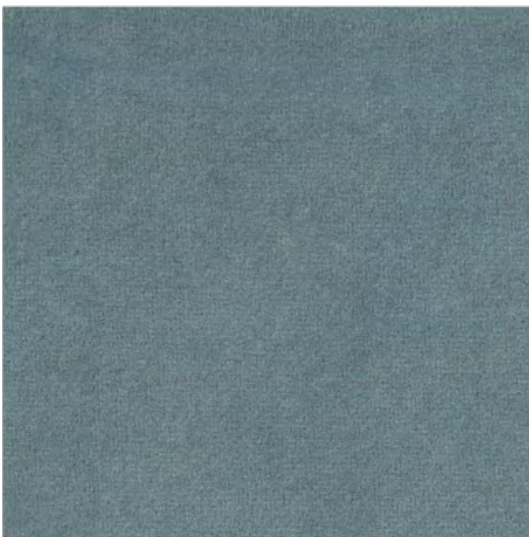
Olive



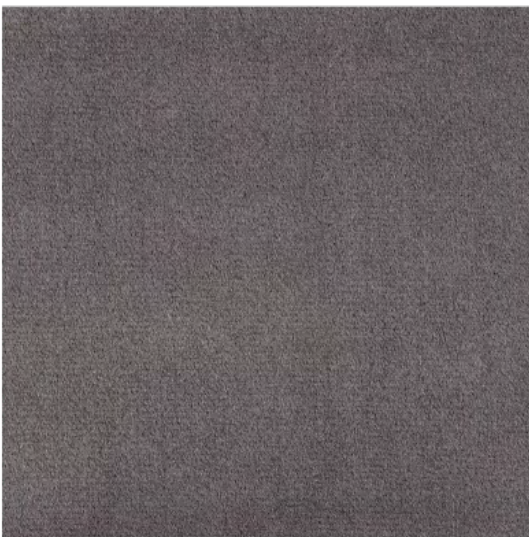
Forest



Emerald



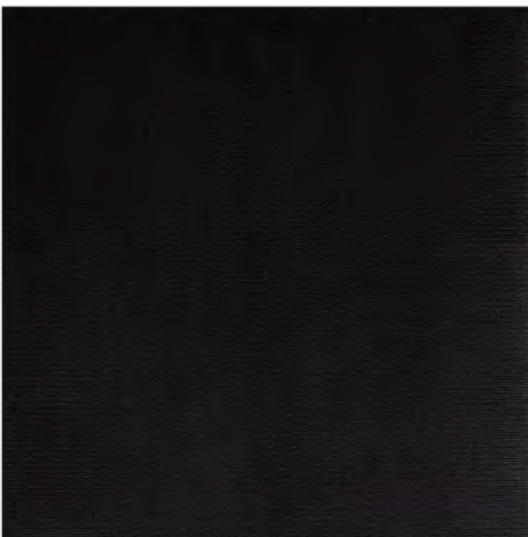
Steel Blue



Mid Grey



Navy



Black

# HARALD

FABRIC TYPE	COMPOSITION	DURABILITY	LIGHTFASTNESS	PILLING	FEATURES	FIRE TESTS
Velvet - Soft Sheen	100% Cotton	50,000 Martindale	3	5	Liquid Repellent	BS 5852 part 1 - Cigarette Test PASS EN 1021-1 - Cigarette Test PASS CA Tech. Bull. 117:2013 / NFPA 260 - Cigarette Test PASS

Caution: the displayed colours, due to technical matters, are approximate and may differ from the original

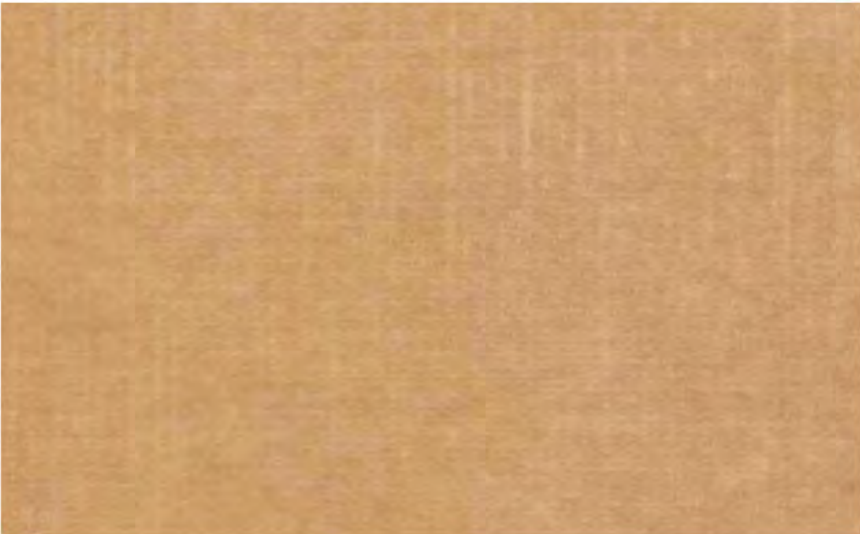




Pearl



Sand



Toffee



Truffle



Coral



Brick



Gold



Cuoio



Terra



Chocolate



Moss



Emerald



Forest



Ash



Black

# MACAU

FABRIC TYPE	COMPOSITION	DURABILITY	LIGHTFASTNESS	PILLING	FEATURES	FIRE TESTS
Velvet - Soft Sheen	100% Polyester	90,000 Martindale	5	4 - 5	Anti-Stain Pet Friendly	BS 5852 part 1 - Cigarette Test PASS EN 1021-1 - Cigarette Test PASS CA Tech. Bull. 117:2013 / NFPA 260 - Cigarette Test PASS



BLUEWORLD<sup>®</sup>  
HUMAN CARE TECHNOLOGY



STANDARD  
100  
9342CIT  
CITEVE

Caution: the displayed colours, due to technical matters, are approximate and may differ from the original





Pearl



Nude



Sand



Taupe



Ebony



Mostaza



Cuoio



Brandy



Bordeaux



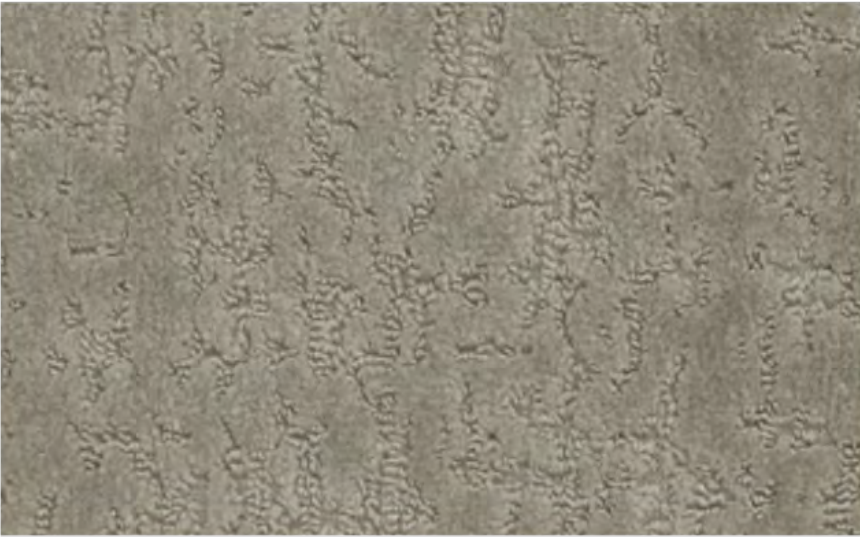
Pink



Khaki



Silver



Ash



Forest



Ocean

# MAJESTIC

FABRIC TYPE	COMPOSITION	DURABILITY	LIGHTFASTNESS	PILLING	FEATURES	FIRE TESTS
Embossed Velvet	100% Polyester	250,000 Martindale	4	4	Anti-Stain	BS 5852 part 1 - Cigarette Test PASS EN 1021-1 - Cigarette Test PASS CA Tech. Bull. 117:2013 / NFPA 260 - Cigarette Test



Caution: the displayed colours, due to technical matters, are approximate and may differ from the original





Solace



True



Harmony



Cuddle



Retreat



Dainty



Affection



Bliss



Courtesy



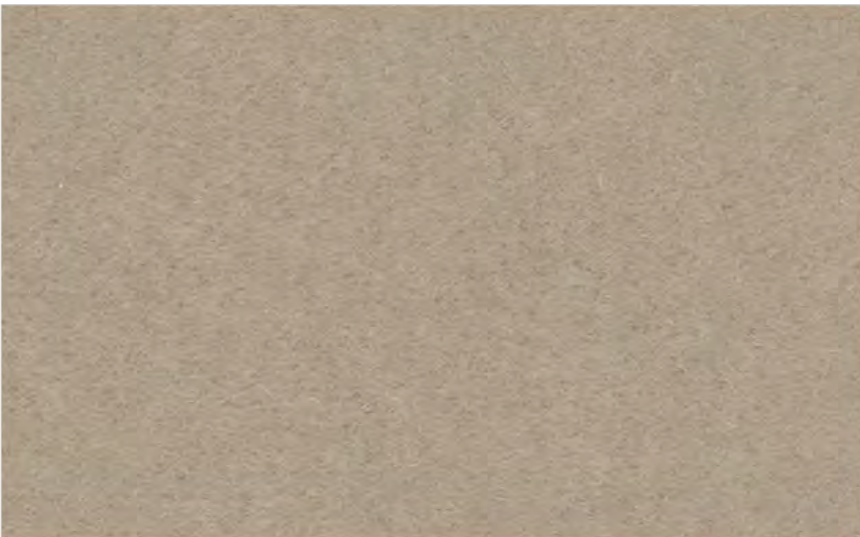
Kind



Pillow



Daydream



Haven



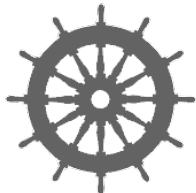
Sympathy



Tender

# MONTE

By Vescom



USCG –  
EU MRA  
0038



STANDARD  
100  
1207035  
Centexbel



Caution: the displayed colours, due to technical matters, are approximate and may differ from the original

FABRIC TYPE	COMPOSITION	DURABILITY	LIGHTFASTNESS	PILLING	FIRE TESTS
Velvet	100% Mohair Extreme High Pile	100,000 double rubs Wyzenbeek	5	4 - 5	EN 1021/1-2, Pass; BS 5852, Crib 5; NF P 92/503-507 or NF D 60-013, M2; DIN 4102, B2; Cal TB 117-2013, section 1, Pass; IMO 2010 FTP part 8, Pass; NFPA 260, Class 1





Pearl



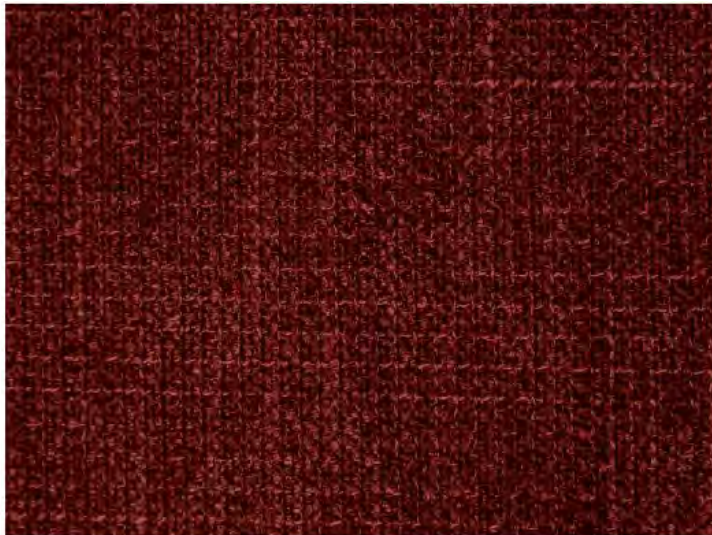
Ivory



Toffee



Pink



Marsala



Deep Purple



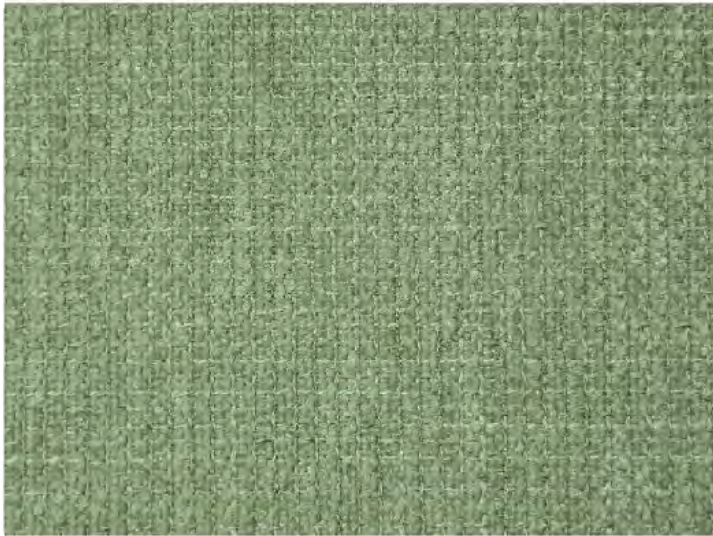
Mostaza



Mud



Truffle



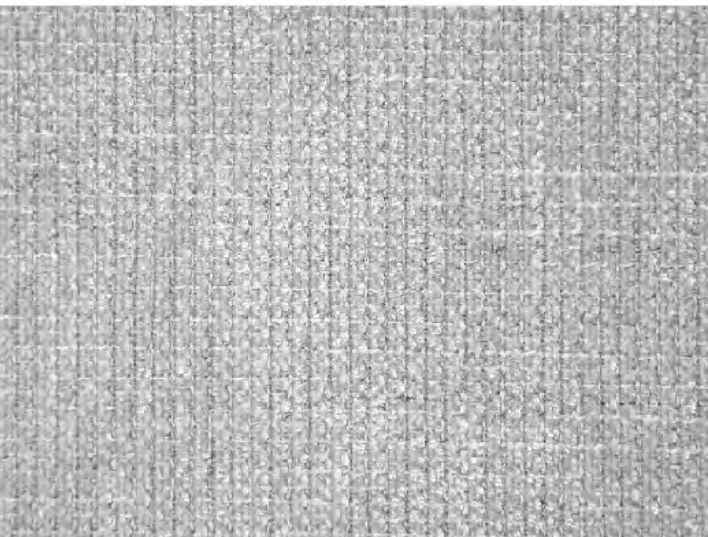
Green



Forest



Chocolate



Cement



Fog



Ocean



Taupe



Anthracite



Black

TRIBU

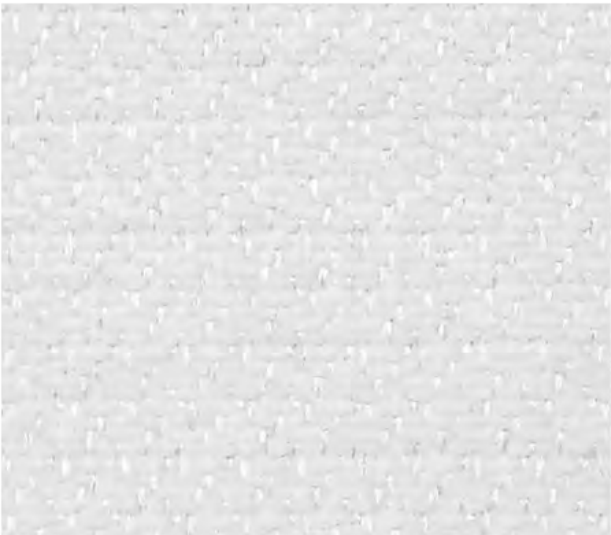
FABRIC TYPE	COMPOSITION	DURABILITY	LIGHTFASTNESS	PILLING	FEATURES	FIRE TESTS
Chenille	100% Polyester	35,000 Martindale	5	4	Anti-Stain	BS 5852 part 1 - Cigarette Test PASS EN 1021-1 - Cigarette Test PASS CA Tech. Bull. 117:2013 / NFPA 260 - Cigarette Test PASS



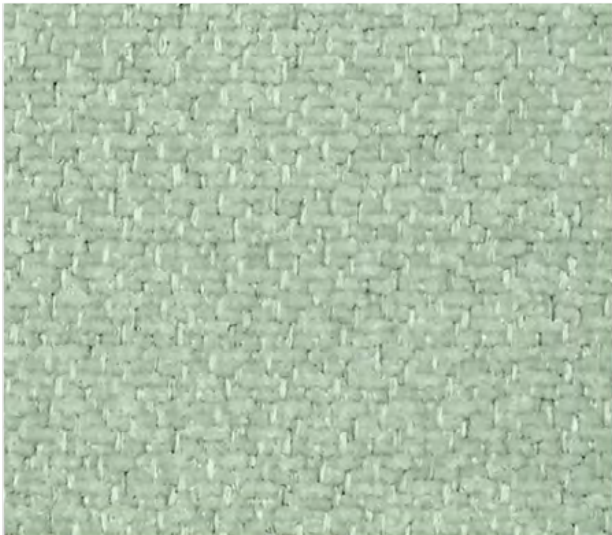
STANDARD  
100  
9342CIT  
CITEVE

Caution: the displayed colours, due to technical matters, are approximate and may differ from the original





White



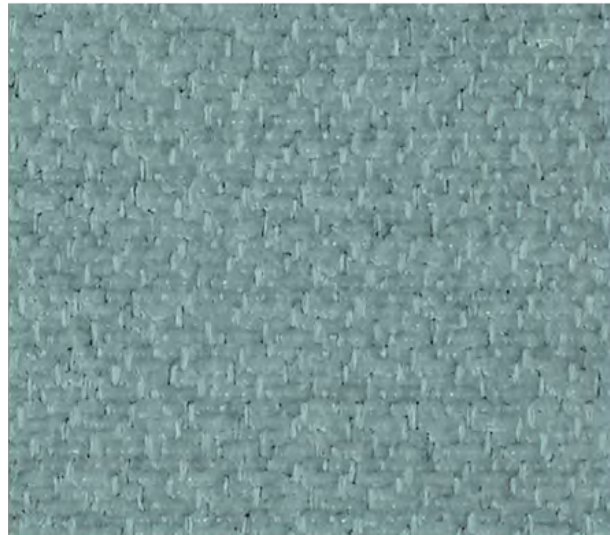
Water Green



Emerald



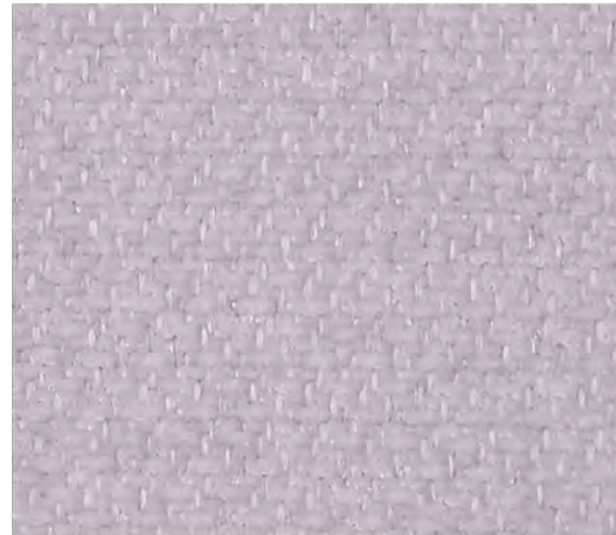
Petrol



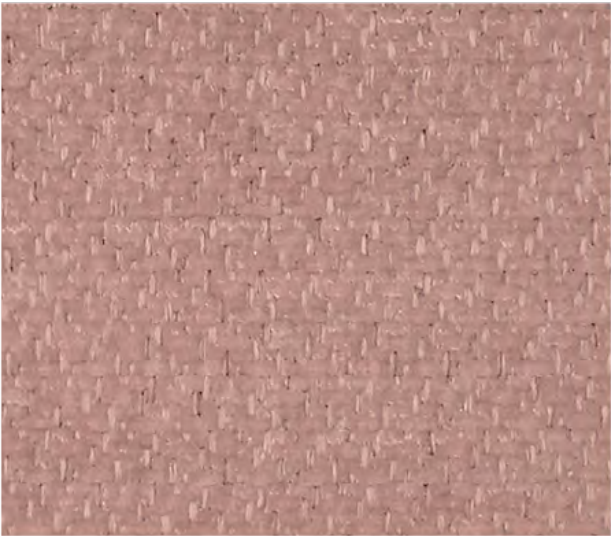
Safira



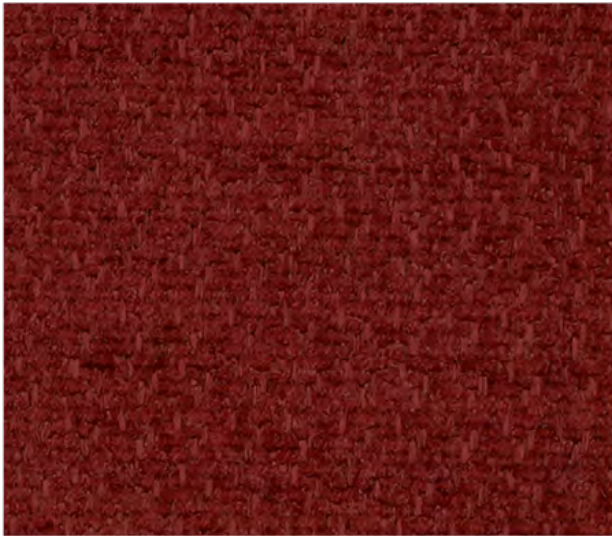
Ice



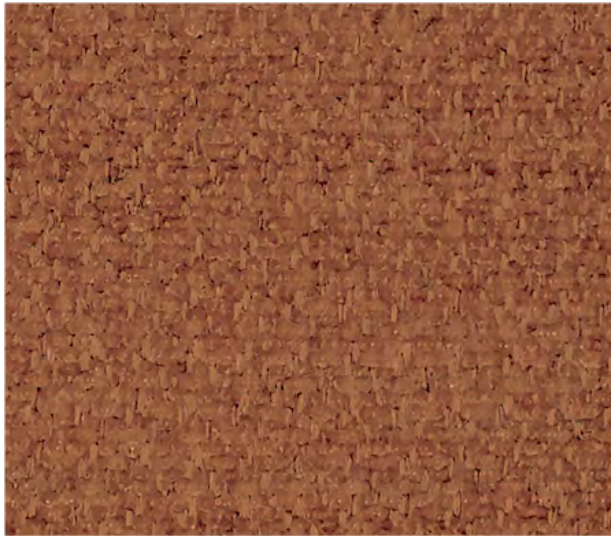
Lavanda



Old Rose



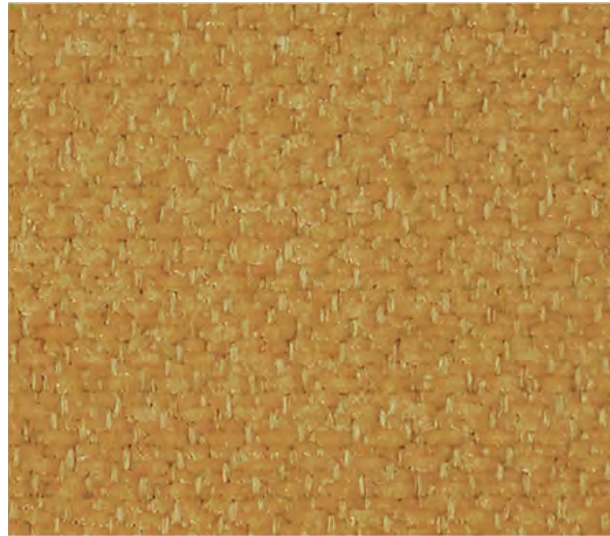
Marsala



Sienna



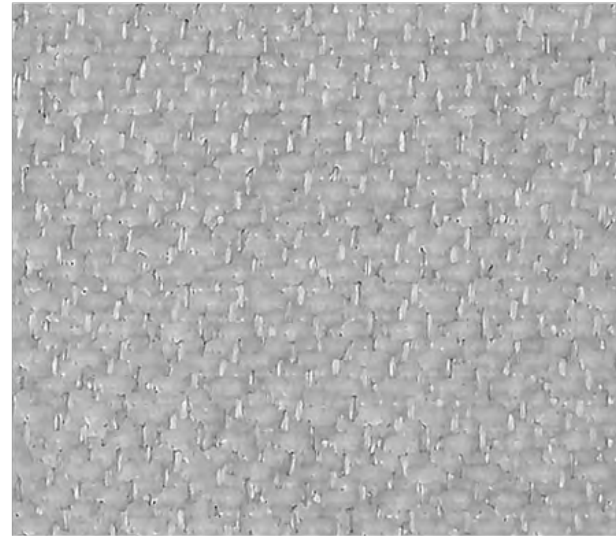
Chocolate



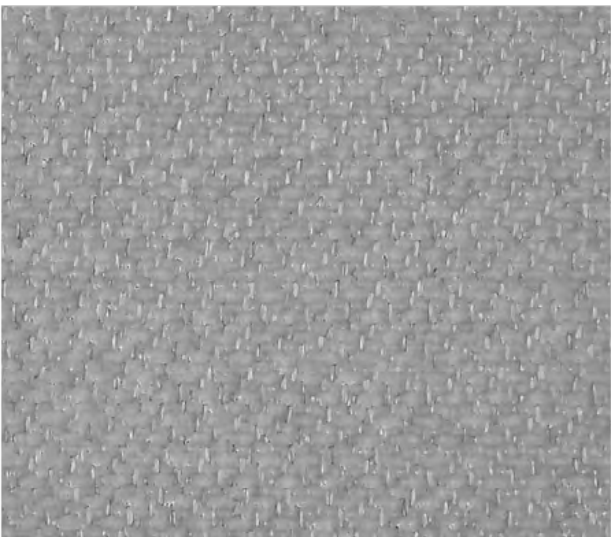
Mustaza



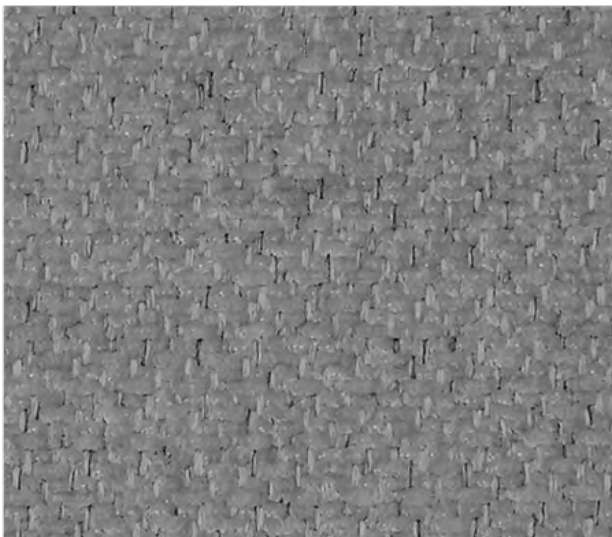
Beige



Cement



Taupe



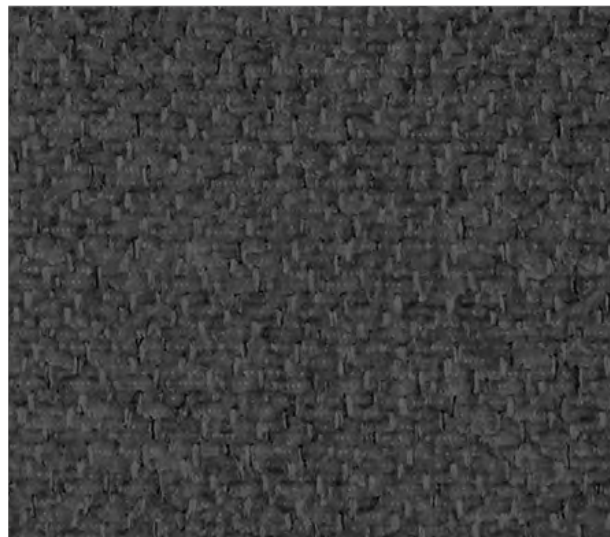
Steel



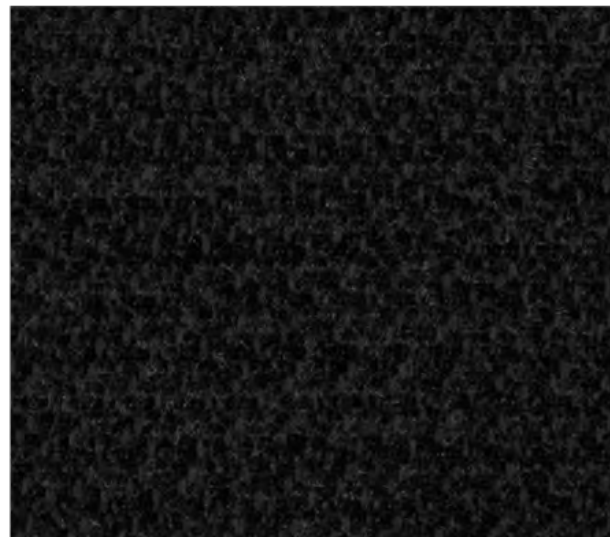
Ocean



Deep Blue



Anthracite



Black

VIENNA

FABRIC TYPE	COMPOSITION	DURABILITY	LIGHTFASTNESS	PILLING	FEATURES	FIRE TESTS
Chenille	100% Polyester	65,000 Martindale	5	4	Anti-Stain	BS 5852 part 1 - Cigarette Test PASS EN 1021-1 - Cigarette Test PASS CA Tech. Bull. 117:2013 / NFPA 260 - Cigarette Test PASS



BLUEWORLD<sup>®</sup>  
HUMAN CARE TECHNOLOGY



STANDARD  
100  
9342CIT  
CITEVE

Caution: the displayed colours, due to technical matters, are approximate and may differ from the original





[info@modern-approach.com](mailto:info@modern-approach.com)