

# UPHOLSTERY OPTIONS

**MICHEL COLLECTION**



Pearl



Beige



Toffee



Trufa



Fango



Mouse



Yellow



Light Grey



Pink



Lavanda



Teja



Bordeaux



Citric



Green



Forest



Turquoise



Sky



Jeans



White



Fog



Taupe



Elephant



Chocolate



Anthracite

# APOLLO

FABRIC TYPE	COMPOSITION	DURABILITY	LIGHTFASTNESS	PILLING	FEATURES	FIRE TESTS
Chenille	100% Polyester	100,000 Martindale	4 - 5	4 - 5	Anti-Stain Liquid Repellent	BS 5852 part 1 - Cigarette Test PASS EN 1021-1 - Cigarette Test PASS CA Tech. Bull. 117:2013 / NFPA 260 - Cigarette Test PASS



BLUEWORLD<sup>®</sup>  
HUMAN CARE TECHNOLOGY



STANDARD  
100  
9342CIT  
CITEVE

Caution: the displayed colours, due to technical matters, are approximate and may differ from original



Nata



Pearl



Champagne



Mostaza



Brick



Pink



Toffee



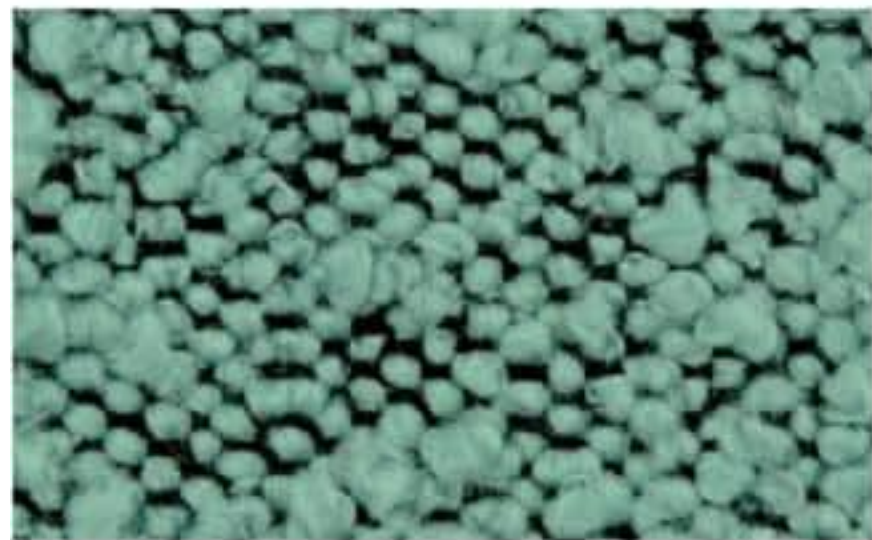
Taupe



Mouse



Olive Green



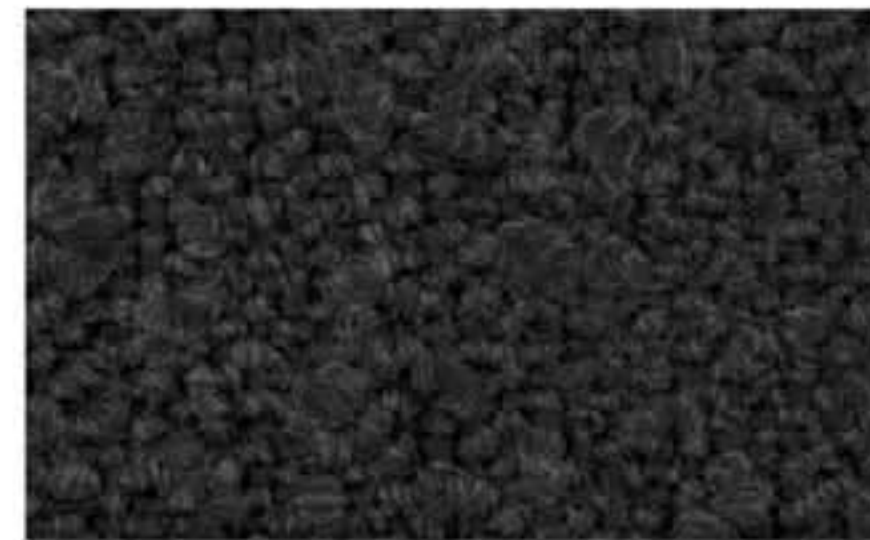
Safira



Atlantic



Graphite



Black

# ASCOT

FABRIC TYPE

Bouclé

COMPOSITION

100% Polyester

DURABILITY

80,000 Martindale

LIGHTFASTNESS

5

PILLING

4

FIRE TESTS

BS 5852 part 1 - Cigarette Test PASS

EN 1021-1 - Cigarette Test PASS

CA Tech. Bull. 117:2013 / NFPA 260 - Cigarette Test PASS

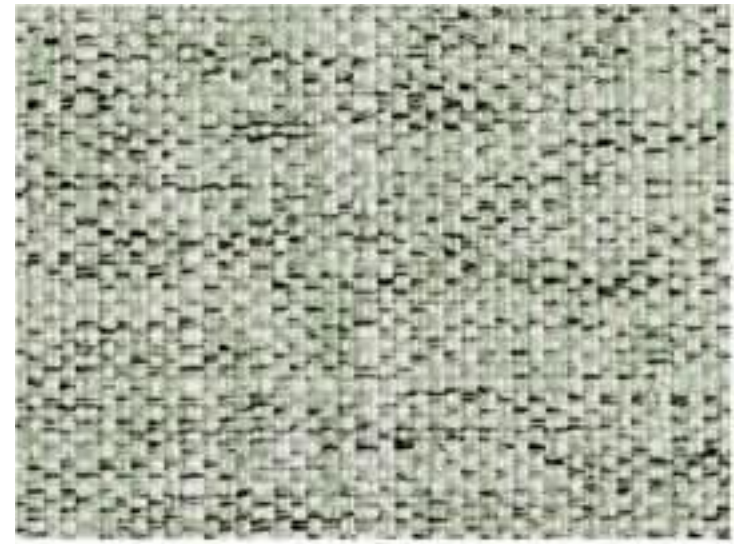


BLUEWORLD  
HUMAN CARE TECHNOLOGY

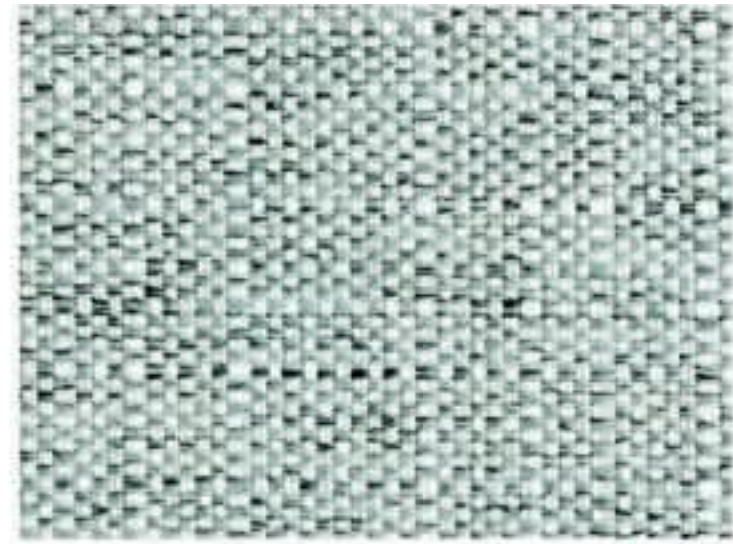


STANDARD  
100  
9342CIT  
CITEVE

Caution: the displayed colours, due to technical matters, are approximate and may differ from original



Water Green



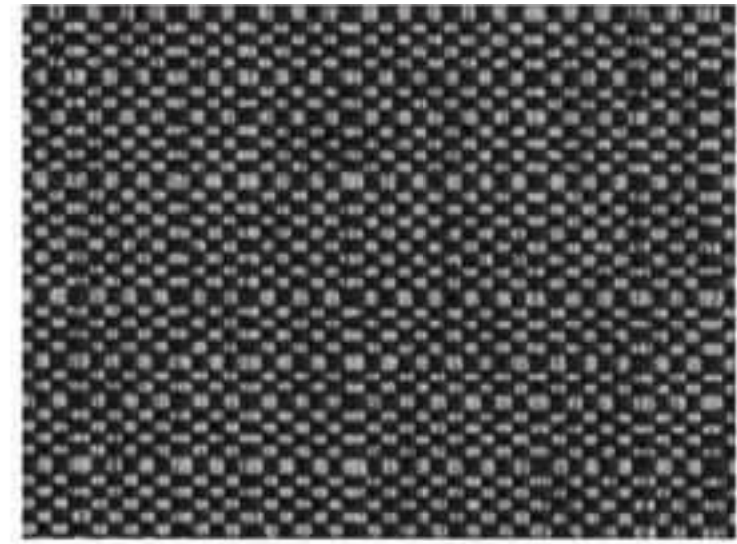
Safura



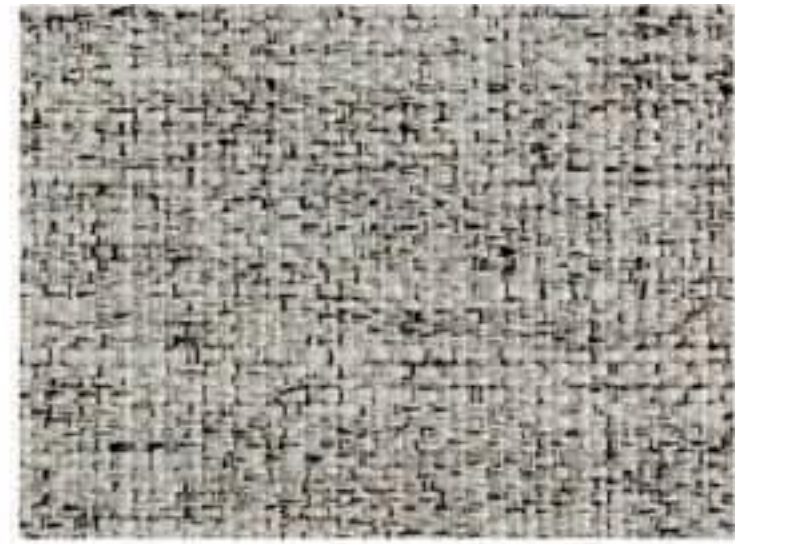
Sky



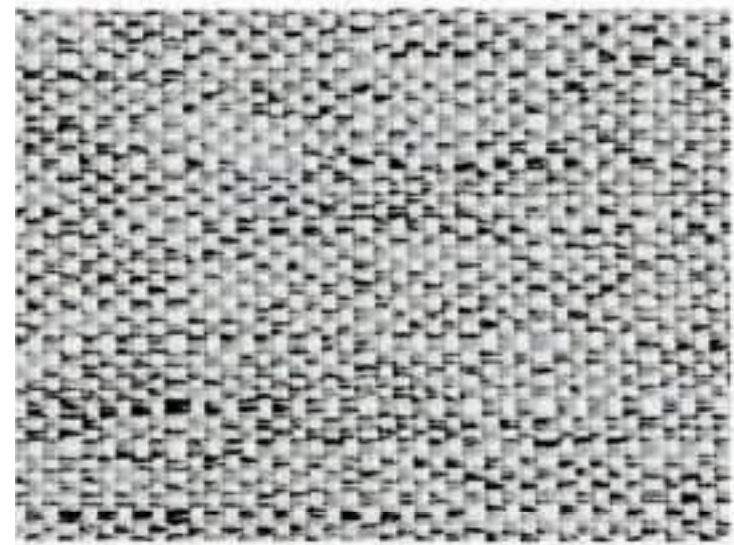
Blue



Black



Ash



Light Grey



Silver



White



Yellow



Red



Salmon



Sand



Beige



Mouse



Taupe



Terra



Chocolate

# BABEL

FABRIC TYPE	COMPOSITION	DURABILITY	LIGHTFASTNESS	PILLING	FEATURES	FIRE TESTS
Flatweave	100% Polyester	90,000 Martindale	4	3 - 5	Easy-to-Clean Breathable Pet Friendly	BS 5852 part 1 - Cigarette Test PASS EN 1021-1 - Cigarette Test PASS CA Tech. Bull. 117:2013 / NFPA 260 - Cigarette Test PASS



BLUEWORLD<sup>®</sup>  
HUMAN CARE TECHNOLOGY



STANDARD  
100  
9342CIT  
CITEVE

Caution: the displayed colours, due to technical matters, are approximate and may differ from original



White



Pearl



Toffee



Mostaza



Sienna



Copper



Red



Safira



Forest



Taupe



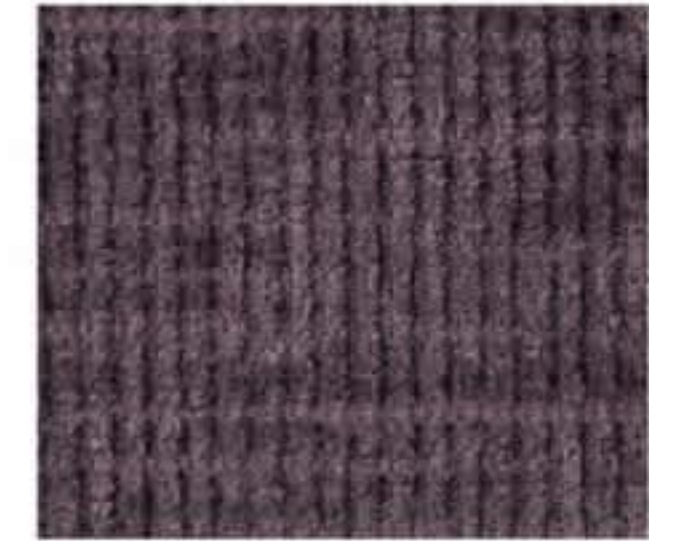
Sky



Ocean



Deep Blue



Deep Purple



Lavanda



Rose



Cement



Truffle



Ash



Black

# BALTIC

FABRIC TYPE	COMPOSITION	DURABILITY	LIGHTFASTNESS	PILLING	FEATURES	FIRE TESTS
Chenille	100% Polyester	35,000 Martindale	5	4	Anti-Stain	BS 5852 part 1 - Cigarette Test PASS EN 1021-1 - Cigarette Test PASS CA Tech. Bull. 117:2013 / NFPA 260 - Cigarette Test PASS



BLUEWORLD<sup>®</sup>  
HUMAN CARE TECHNOLOGY



STANDARD  
100  
9342CIT  
CITEVE

Caution: the displayed colours, due to technical matters, are approximate and may differ from original



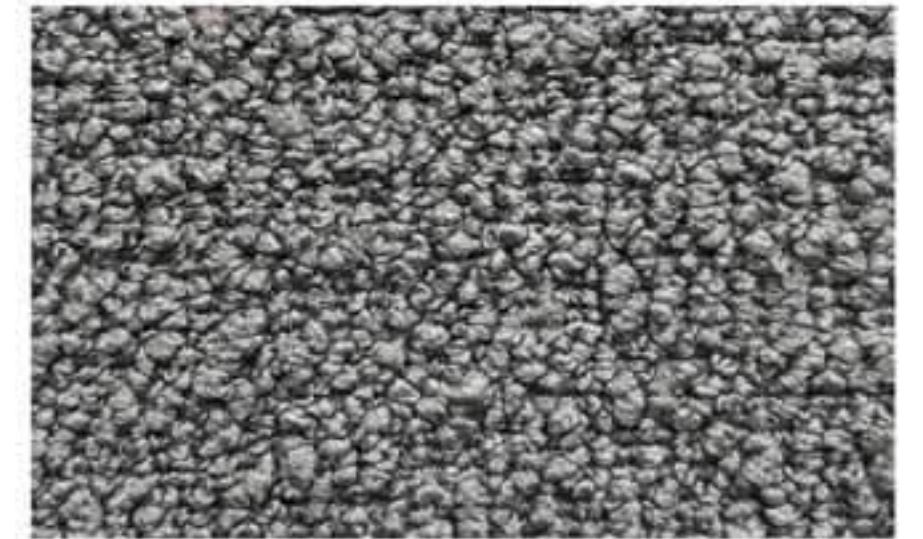
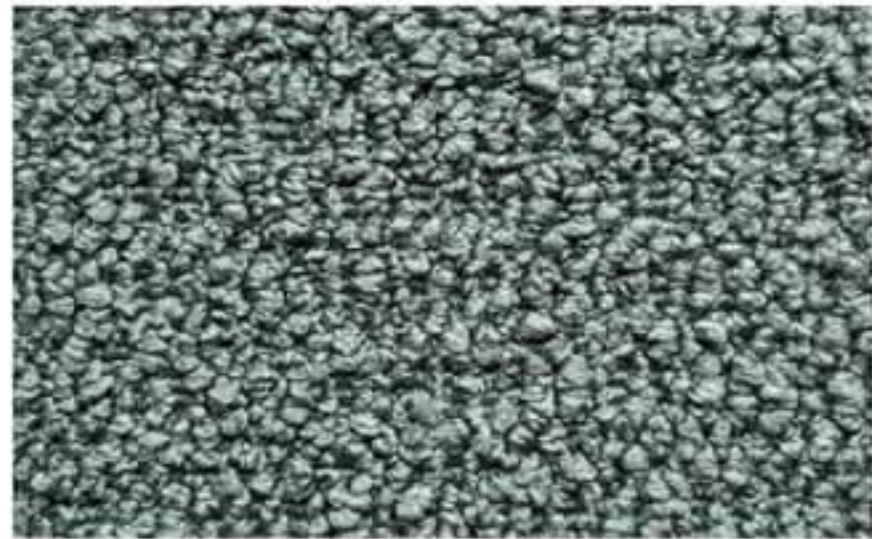
White

Sand

Pale Rose

Paprika

Cinnamon



Aqua

Pine

Hunter

Dark Forest

Fossil



Pebble

Dove

Stone

Shadow

Charcoal

# BOUCLÉ

FABRIC TYPE

Bouclé

COMPOSITION

100% Polyester

DURABILITY

80,000 Martindale

LIGHTFASTNESS

3

PILLING

4

Caution: the displayed colours, due to technical matters, are approximate and may differ from original



Fog



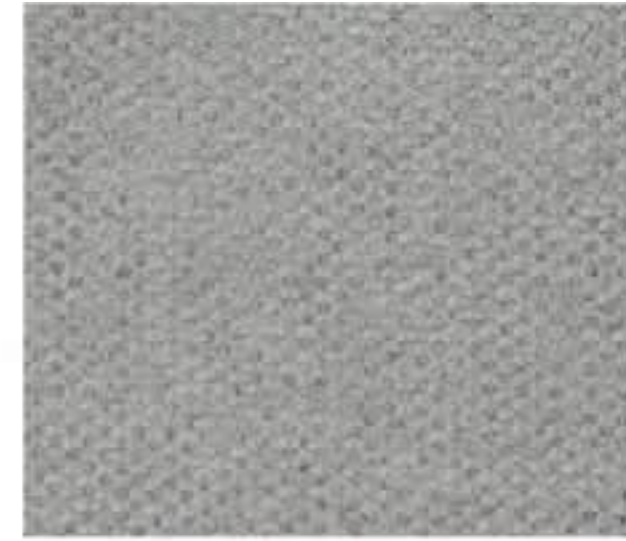
Peral



Beige



Mud



Cement



Tabac



Chocolate



Camel



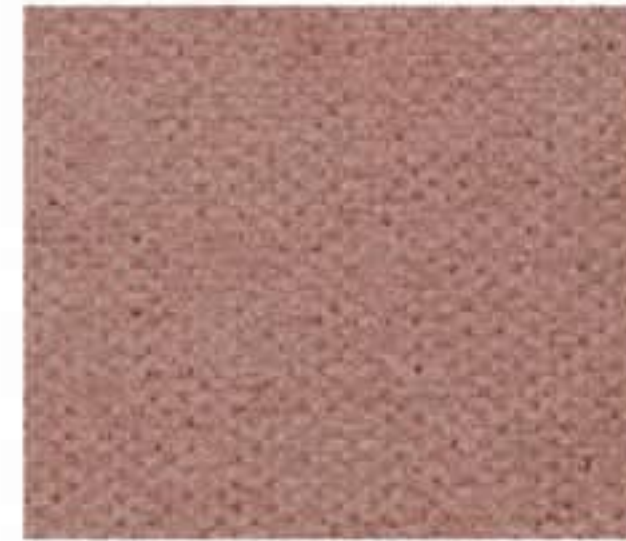
Truffle



Mostaza



Brick



Coral



Rose



Bordeaux



Water Green



Ash



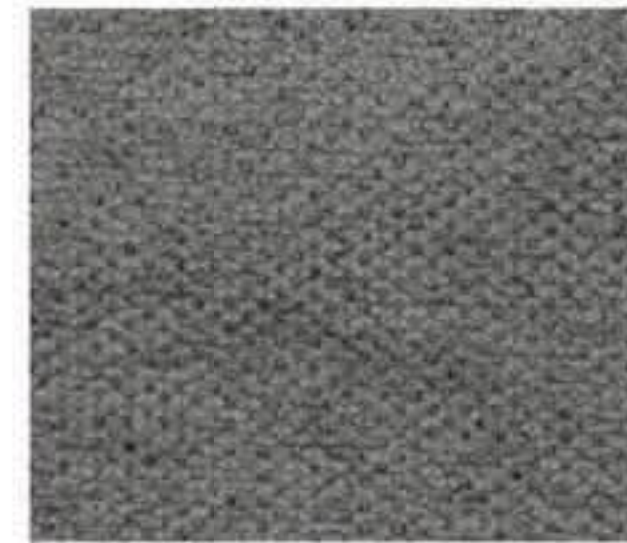
Bottle



Jeans



Ocean



Anthracite



Black

# BROOKLYN

FABRIC TYPE	COMPOSITION	DURABILITY	LIGHTFASTNESS	PILLING	FEATURES	FIRE TESTS
Chenille	94% Polyester + 6% Nylon	50,000 Martindale	3 -4	4 - 5	Anti-Stain	BS 5852 part 1 - Cigarette Test PASS EN 1021-1 - Cigarette Test PASS CA Tech. Bull. 117:2013 / NFPA 260 - Cigarette Test PASS



Caution: the displayed colours, due to technical matters, are approximate and may differ from original



Pearl



Beige



Lion



Fog



Stone



Elephant



Taupe



Ebony



Sand



Light Violet



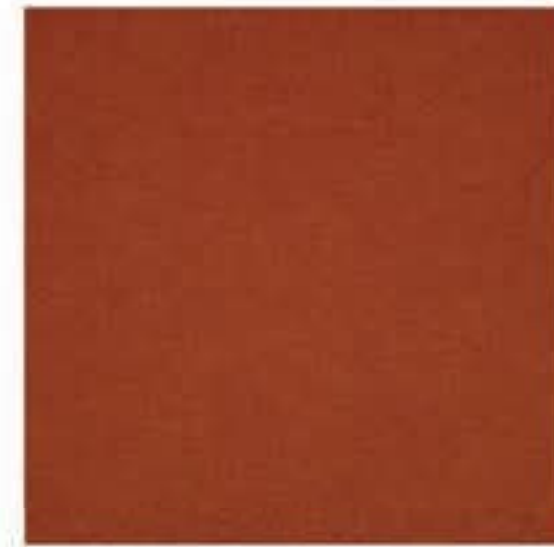
Pink



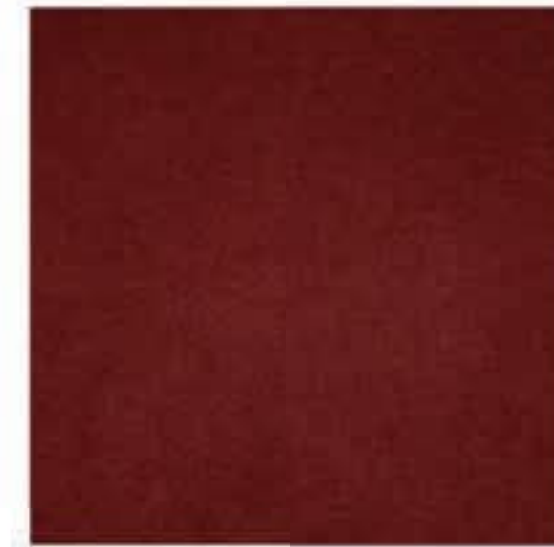
Salmon



Cuoio



Terracotta



Marsala



Bordeaux



Mostaza



Olive



Forest



Deep Green



Safira



Dark Blue



Ocean



Deep Blue

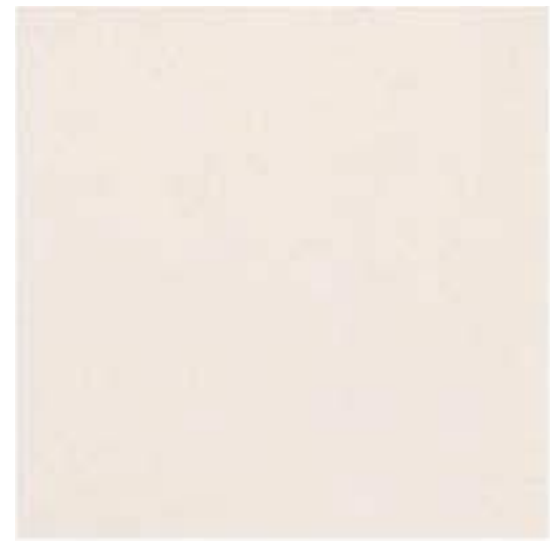
# CASINO

FABRIC TYPE	COMPOSITION	DURABILITY	LIGHTFASTNESS	PILLING	FEATURES	FIRE TESTS
Velvet - Matte Finish	100% Polyester	100,000 Martindale	4 - 5	4 - 5	Anti-Stain Pet Friendly	BS 5852 part 1 - Cigarette Test PASS EN 1021-1 - Cigarette Test PASS CA Tech. Bull. 117:2013 / NFPA 260 - Cigarette Test PASS

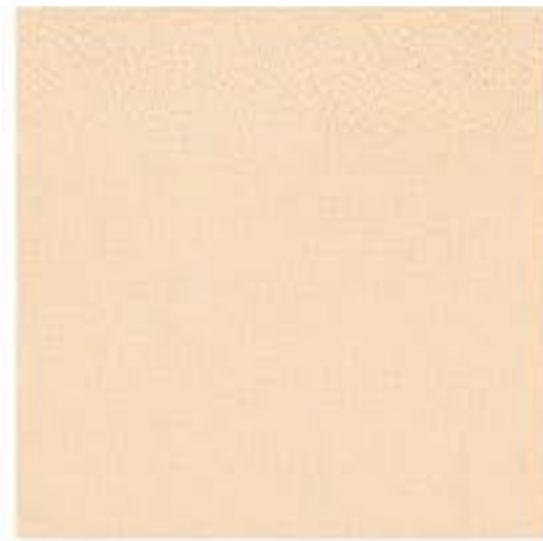


Caution: the displayed colours, due to technical matters, are approximate and may differ from original

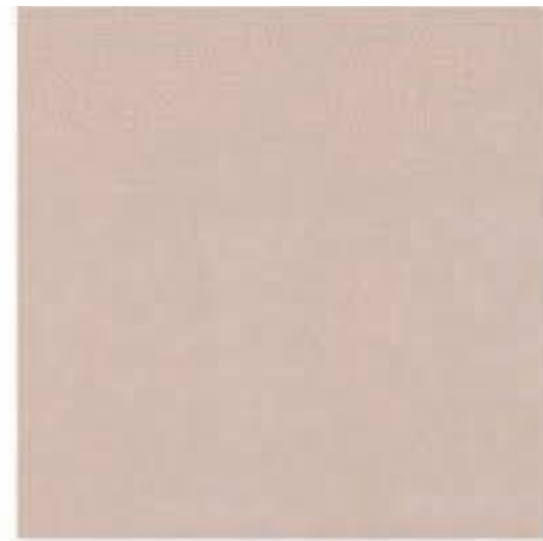




Milk



Cream



Warm Grey



Sand



Camel



Taupe



Mink



Ebony



Mostaza



Masai



Copper



Rust



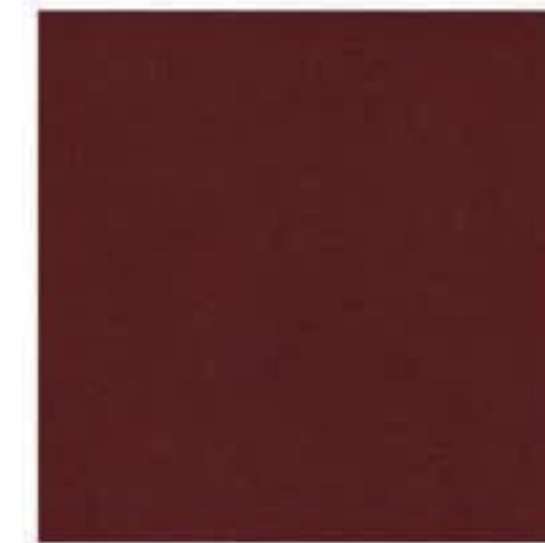
Mauve



Marsala



Red



Bourdeaux



Cement



Olive



Forest



Emerald



Steel Blue



Mid Grey



Navy

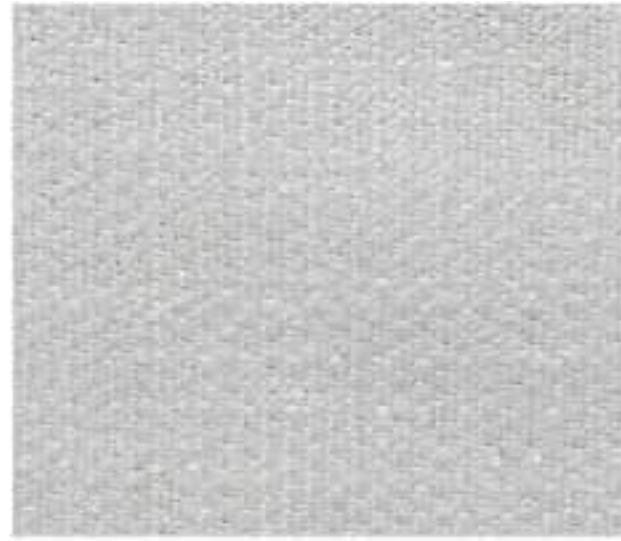


Black

# HARALD

FABRIC TYPE	COMPOSITION	DURABILITY	LIGHTFASTNESS	PILLING	FEATURES	FIRE TESTS
Velvet - Soft Sheen	100% Cotton	50,000 Martindale	3	5	Liquid Repellent	BS 5852 part 1 - Cigarette Test PASS EN 1021-1 - Cigarette Test PASS CA Tech. Bull. 117:2013 / NFPA 260 - Cigarette Test PASS

Caution: the displayed colours, due to technical matters, are approximate and may differ from original



White



Cream



Light Grey



Lavanda



Orange



Bordeaux



Trufa



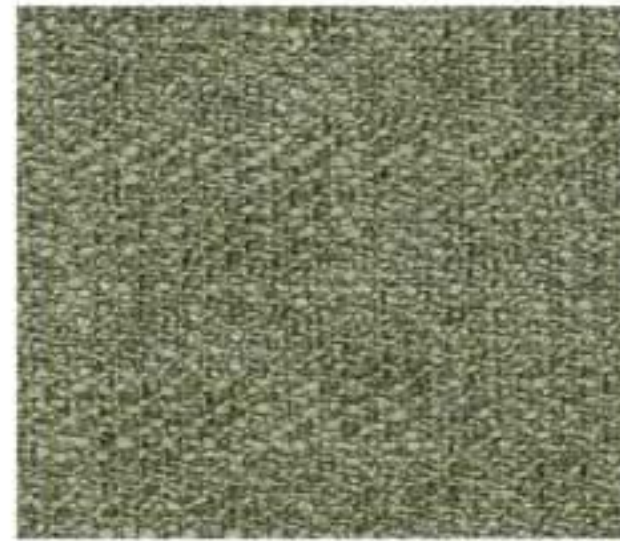
Beige



Sand



Citric



Green



Camel



Brown



Chocolate



Water Green



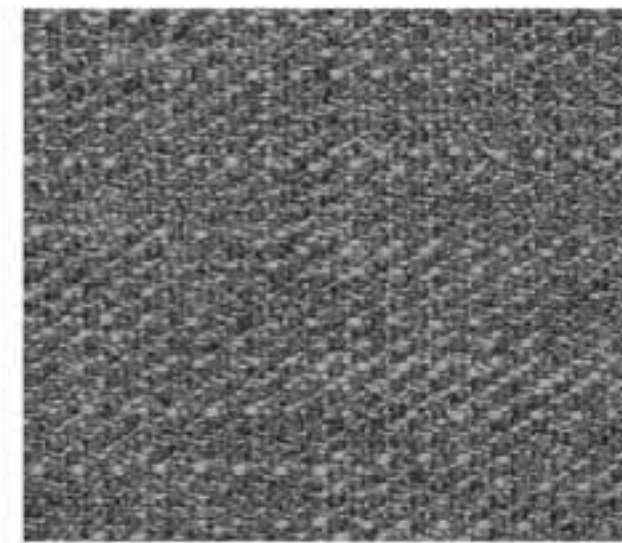
Turquoise



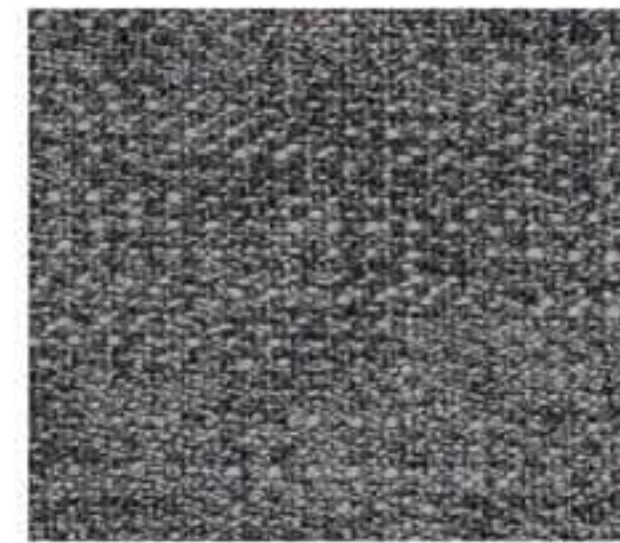
Blue



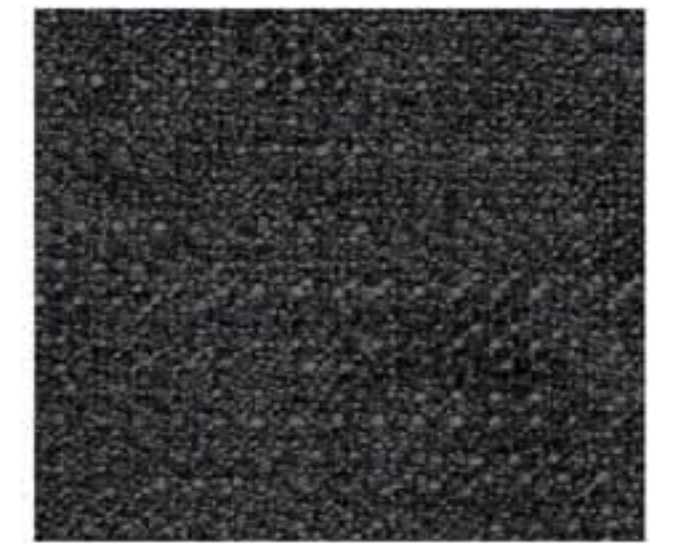
Ocean



Steel



Dark Grey



Black

# LONDON

FABRIC TYPE	COMPOSITION	DURABILITY	LIGHTFASTNESS	PILLING	FIRE TESTS
Flatweave	100% Polyester	80,000 Martindale	5	4	BS 5852 part 1 - Cigarette Test PASS EN 1021-1 - Cigarette Test PASS CA Tech. Bull. 117:2013 / NFPA 260 - Cigarette Test PASS



BLUEWORLD<sup>®</sup>  
HUMAN CARE TECHNOLOGY



STANDARD  
100  
9342CIT  
CITEVE

Caution: the displayed colours, due to technical matters, are approximate and may differ from original



Pearl

Sand

Toffee

Truffle

Coral



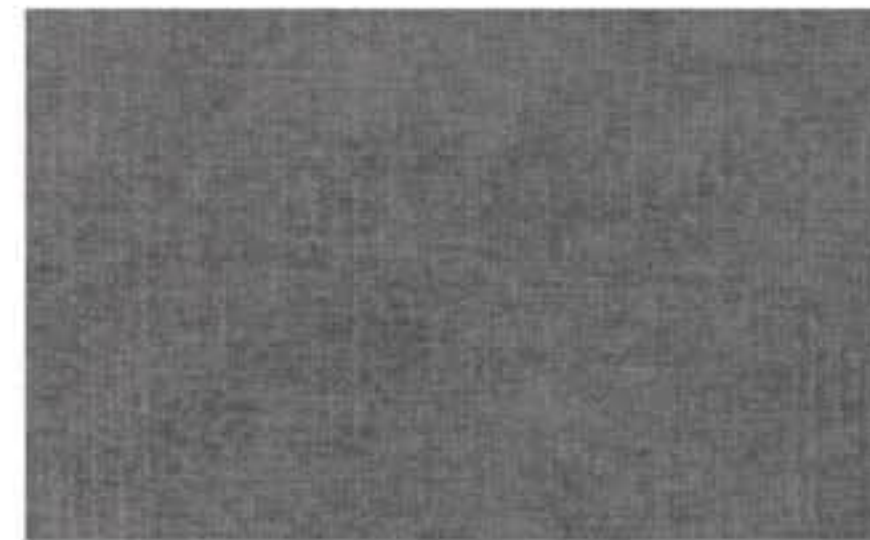
Brick

Gold

Cuoio

Terra

Chocolate



Moss

Emerald

Forest

Ash

Black

# MACAU

FABRIC TYPE	COMPOSITION	DURABILITY	LIGHTFASTNESS	PILLING	FEATURES	FIRE TESTS
Velvet - Soft Sheen	100% Polyester	90,000 Martindale	5	4 - 5	Anti-Stain Pet Friendly	BS 5852 part 1 - Cigarette Test PASS EN 1021-1 - Cigarette Test PASS CA Tech. Bull. 117:2013 / NFPA 260 - Cigarette Test PASS



BLUEWORLD<sup>®</sup>  
HUMAN CARE TECHNOLOGY



STANDARD  
100  
9342CIT  
CITEVE

Caution: the displayed colours, due to technical matters, are approximate and may differ from original



Nata



Toffee



Sand



Truffle



Mud



Taupe



Chocolate



Ebony



Rose



Lavanda



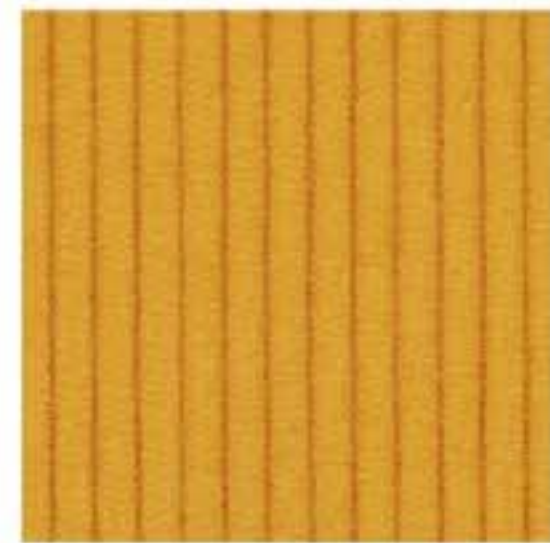
Purple



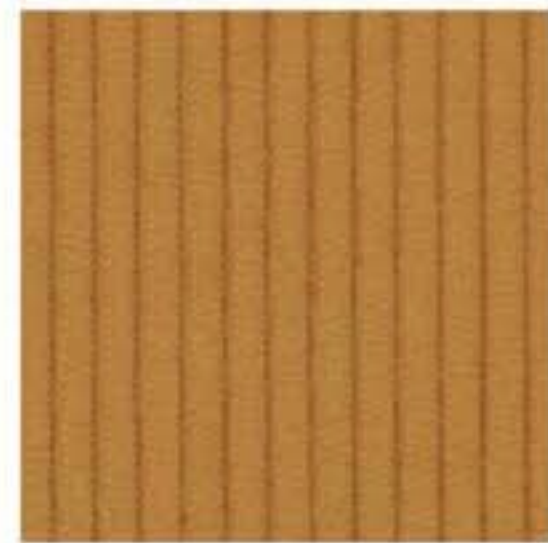
Coral



Red



Yellow



Mostaza



Forest



Lima



Safria



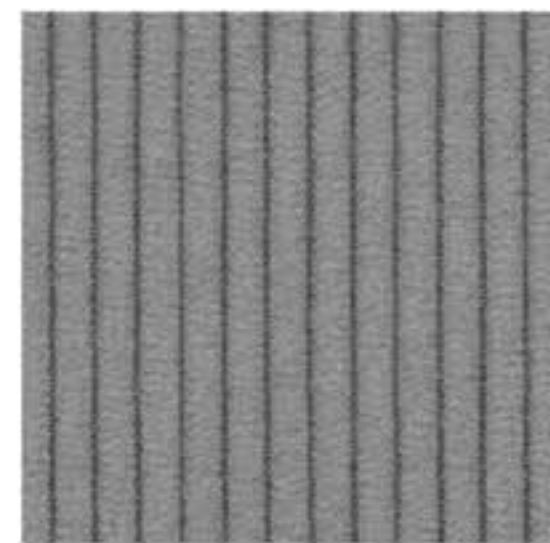
Sky



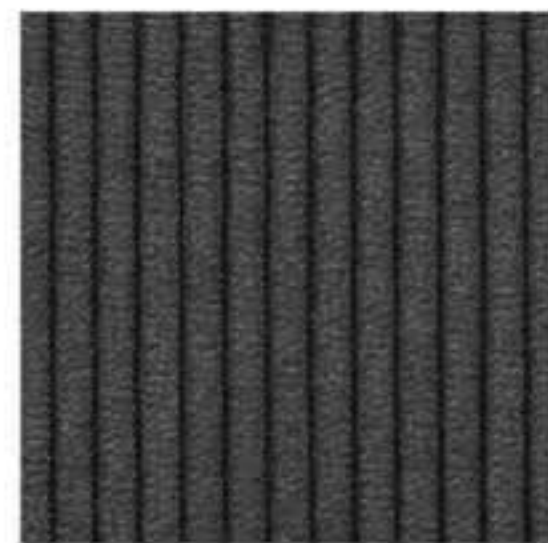
Navy



Ocean



Ash



Anthracite



Black

# SCALA

## FABRIC TYPE

Corduroy

## COMPOSITION

100% Polyester

## DURABILITY

80,000 Martindale

## LIGHTFASTNESS

5

## PILLING

3 - 4

## FEATURES

Anti-Stain

## FIRE TESTS

BS 5852 part 1 - Cigarette Test PASS

EN 1021-1 - Cigarette Test PASS

CA Tech. Bull. 117:2013 / NFPA 260 - Cigarette Test PASS



BLUEWORLD<sup>®</sup>  
HUMAN CARE TECHNOLOGY



STANDARD  
100  
9342CIT  
CITEVE

Caution: the displayed colours, due to technical matters, are approximate and may differ from original



Pearl



Ivory



Toffee



Pink



Marsala



Deep Purple



Mostaza



Mud



Truffle



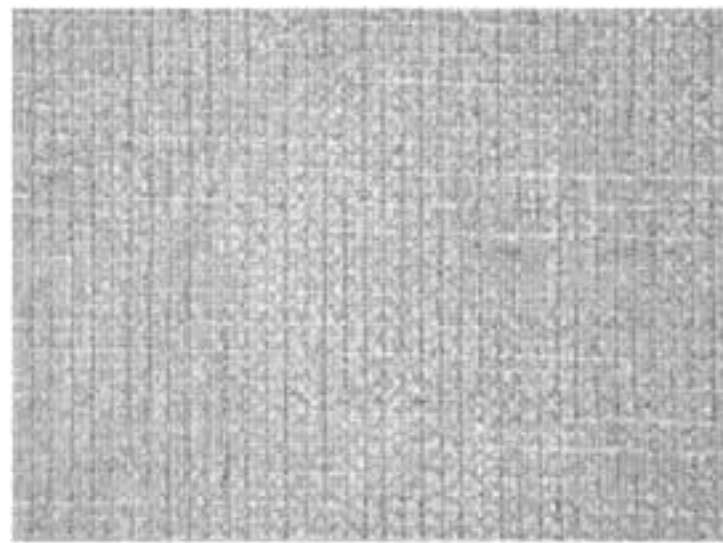
Green



Forest



Chocolate



Cement



Fog



Ocean



Taupe



Anthracite



Black

# TRIBU

FABRIC TYPE	COMPOSITION	DURABILITY	LIGHTFASTNESS	PILLING	FEATURES	FIRE TESTS
Chenille	100% Polyester	35,000 Martindale	5	4	Anti-Stain	BS 5852 part 1 - Cigarette Test PASS EN 1021-1 - Cigarette Test PASS CA Tech. Bull. 117:2013 / NFPA 260 - Cigarette Test PASS



BLUEWORLD<sup>®</sup>  
HUMAN CARE TECHNOLOGY



STANDARD  
100  
9342CIT  
CITEVE

Caution: the displayed colours, due to technical matters, are approximate and may differ from original



Ivory



Sand



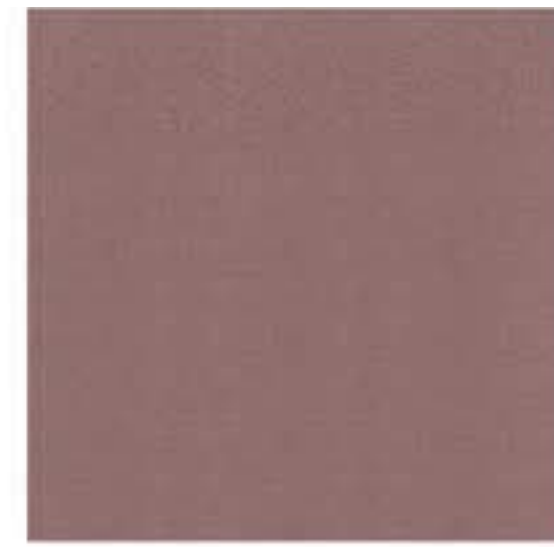
Beige



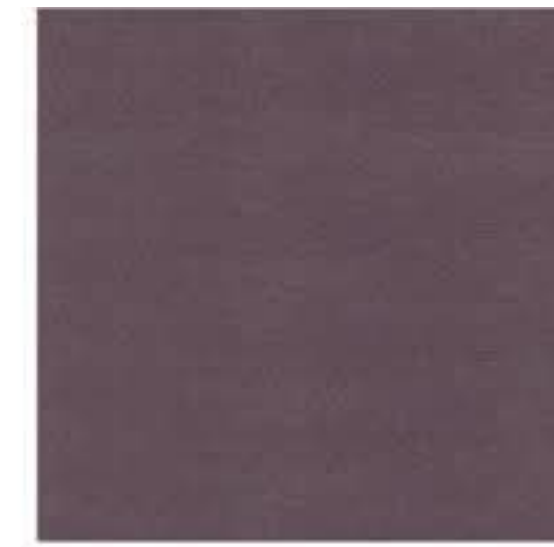
Mink



Oyster



Pale Rose



Lilac



Ruby



Saffron



Salmon



Terra



Desert



Mud



Chestnut



Green



Olive



Cloud



Safira



Blue



Atlantic



Tide



Fossil



Dark Grey



Dark Navy

# VELVETEEN

## FABRIC TYPE

Velvet - Matte Sheen

## COMPOSITION

100% Polyester

## DURABILITY

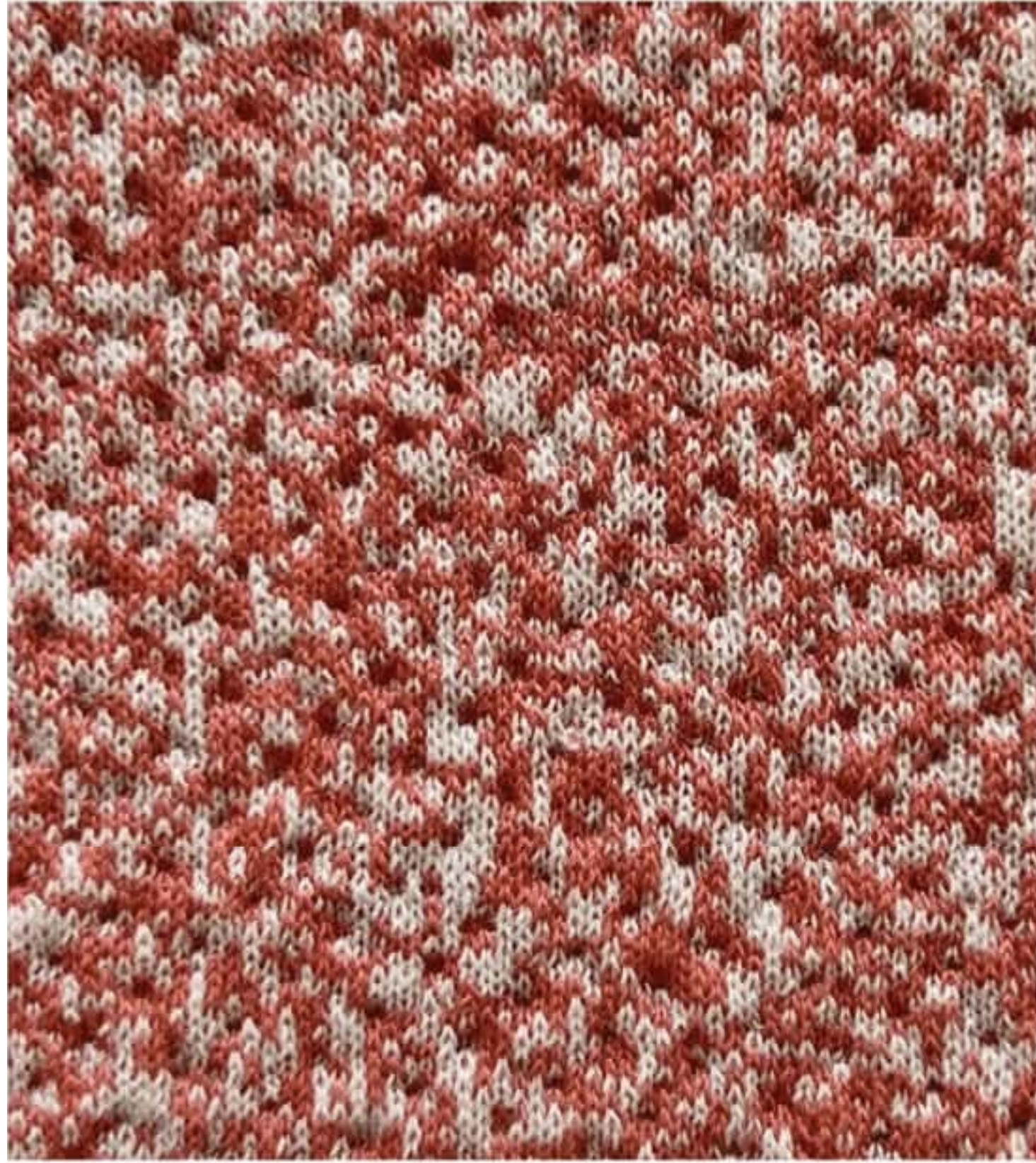
60,000 Martindale

## LIGHTFASTNESS

4

## PILLING

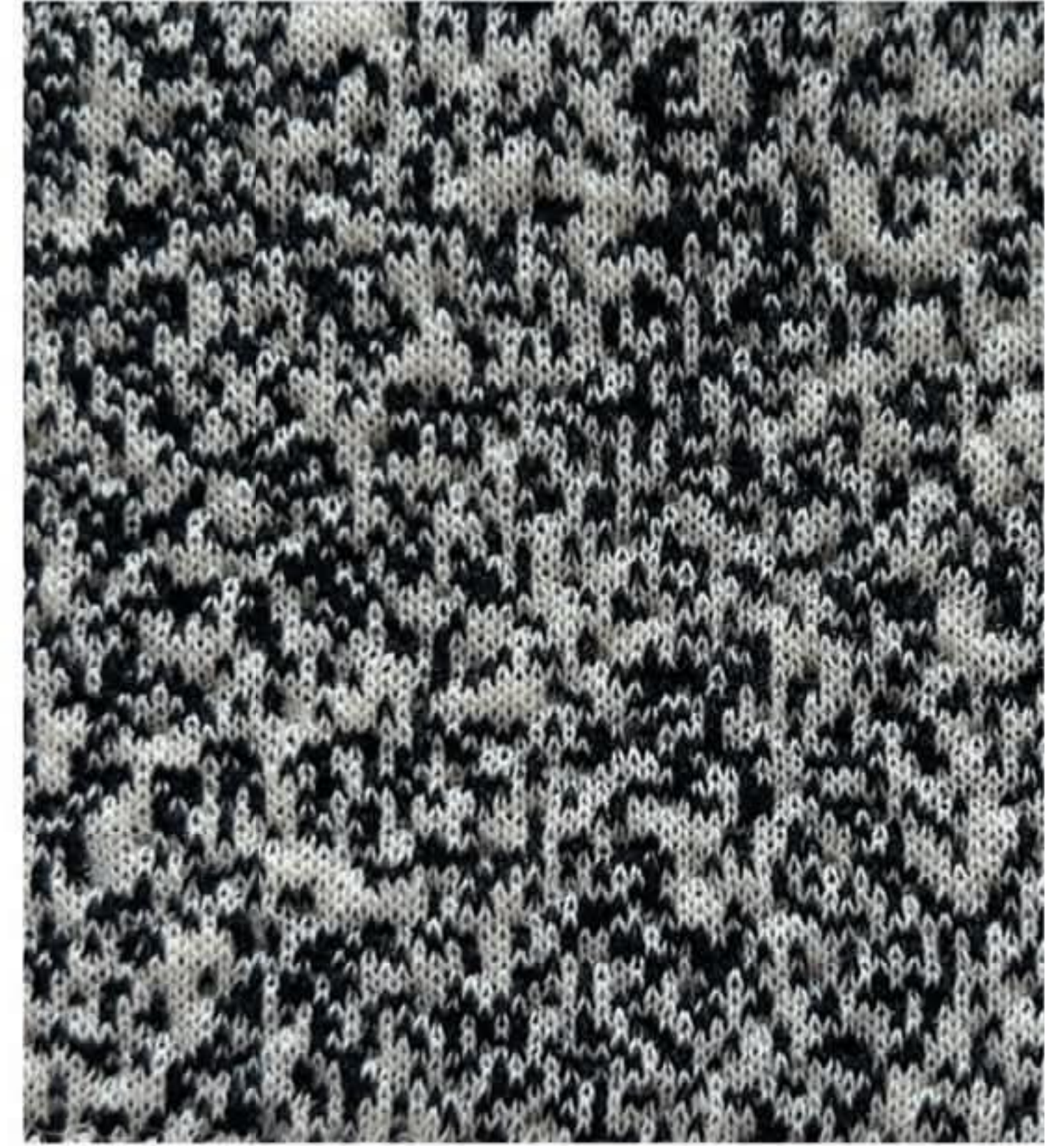
4



Coral



Blue



Black

# GRADIENT FABRIC

FABRIC TYPE	COMPOSITION	DURABILITY	LIGHTFASTNESS	PILLING
3D Knit	100% Polyester	40,000 Martindale	4	3 - 4

Caution: the displayed colours, due to technical matters, are approximate and may differ from original



Cream



Silver



Almond



Elephant



Ebony



Taupe



Camel



Tabacco



Avocat



Forest



Milk



Cement



Ash



Anthracite



Black

# FLORIDA

LEATHER TYPE	AVERAGE SKIN THICKNESS	RAWHIDE	PREPARATION	FIRE TESTS
Corrected Leather	0.8 - 1.0 mm	Brazilian Bovine	Corrected and Embossed Grain Protective Top Coat, Soft Handle and Silky Matte Finish	BS 5852:1979 BS EN 1021-1-2:2006

Caution: the displayed colours, due to technical matters, are approximate and may differ from original



**Not all available fabrics and colours are listed on the site. Please contact us if you would like more information on available fabrics and colours.**

Email: [info@nue-modern.com](mailto:info@nue-modern.com)

[www.nue-modern.com](http://www.nue-modern.com)