



UPHOLSTERY OPTIONS

RO LOUNGE CHAIR



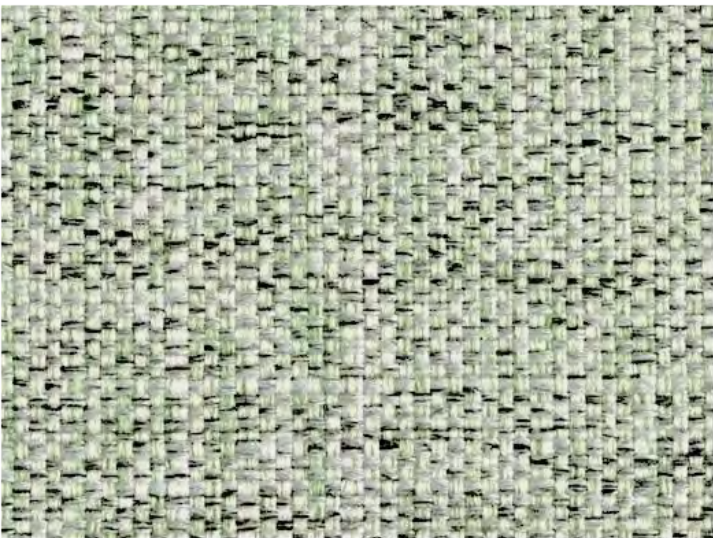
APOLLO

FABRIC TYPE	COMPOSITION	DURABILITY	LIGHTFASTNESS	PILLING	FEATURES	FIRE TESTS
Chenille	100% Polyester	100,000 Martindale	4 - 5	4 - 5	Anti-Stain Liquid Repellent	BS 5852 part 1 - Cigarette Test PASS EN 1021-1 - Cigarette Test PASS CA Tech. Bull. 117:2013 / NFPA 260 - Cigarette Test PASS

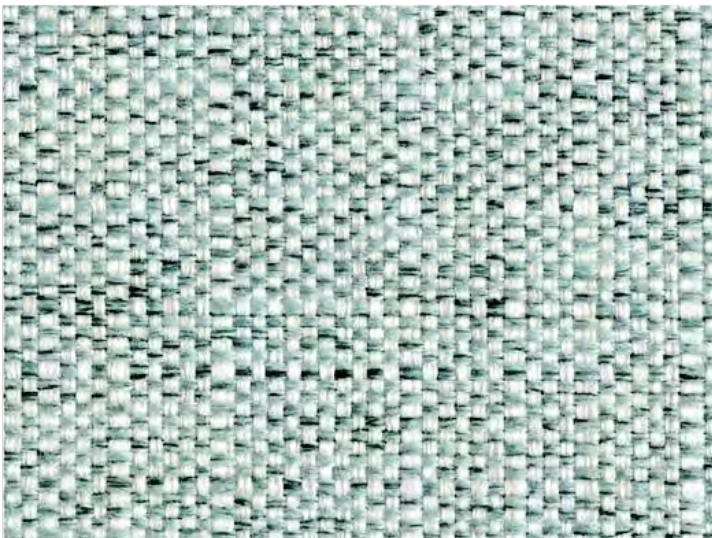


STANDARD
100
9342CIT
CITEVE

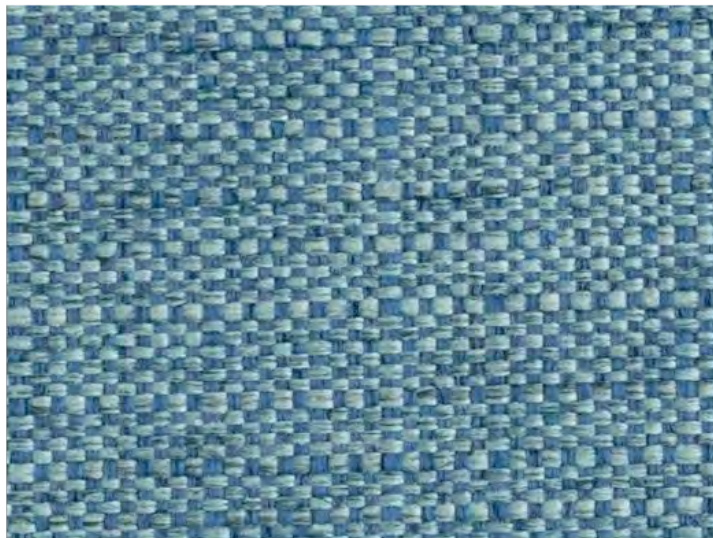
Caution: the displayed colours, due to technical matters, are approximate and may differ from the original



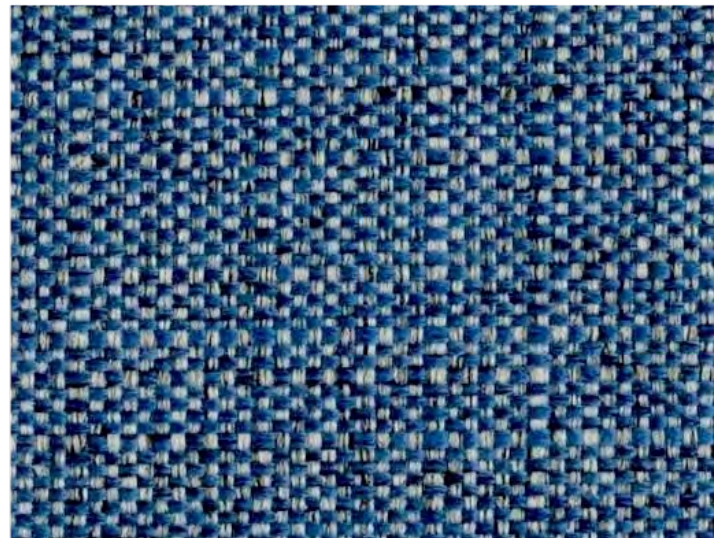
Water Green



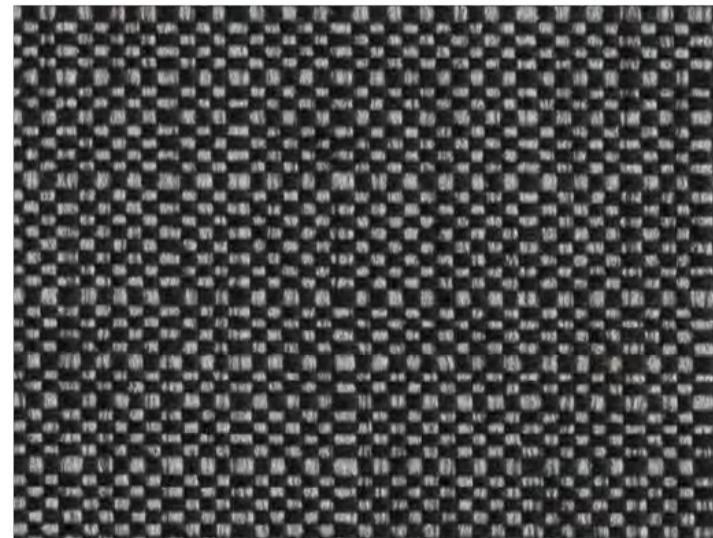
Safura



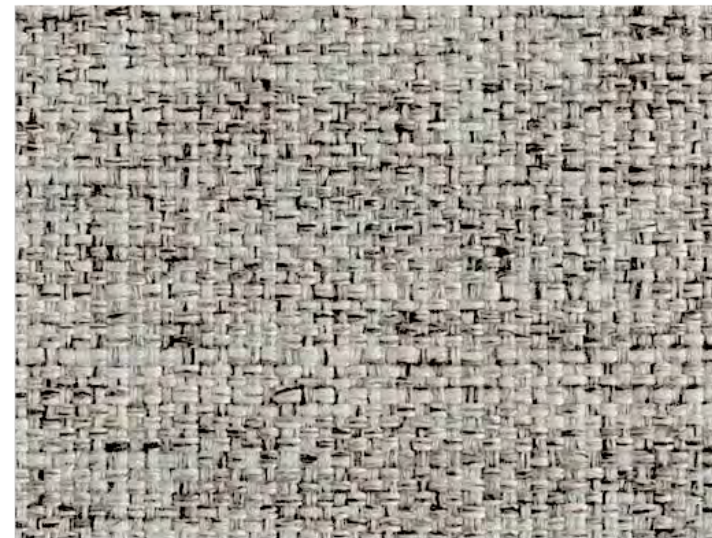
Sky



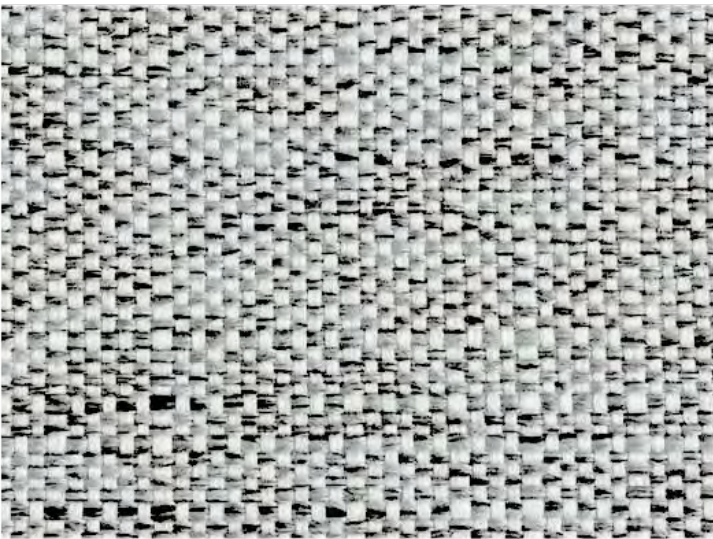
Blue



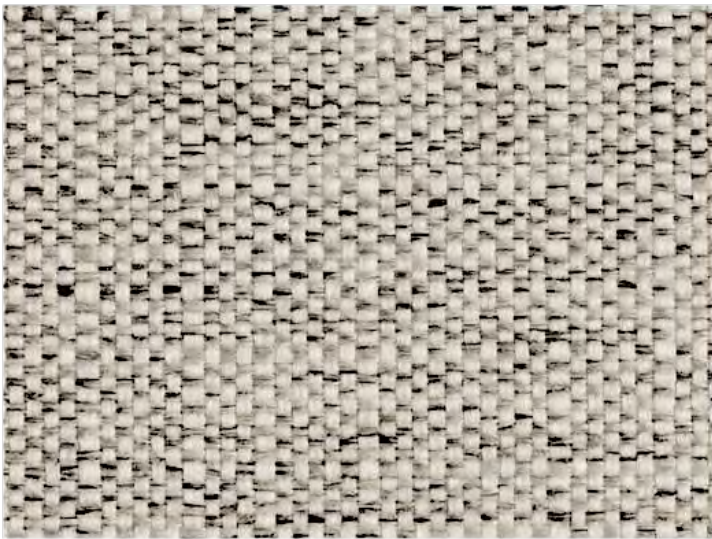
Black



Ash



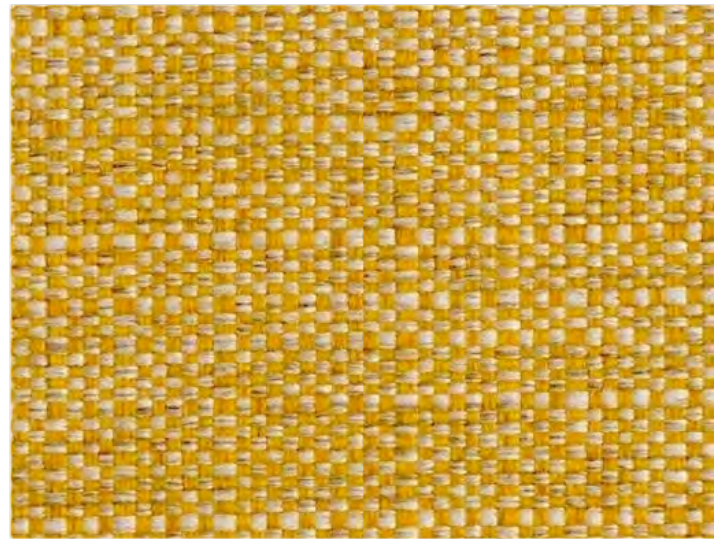
Light Grey



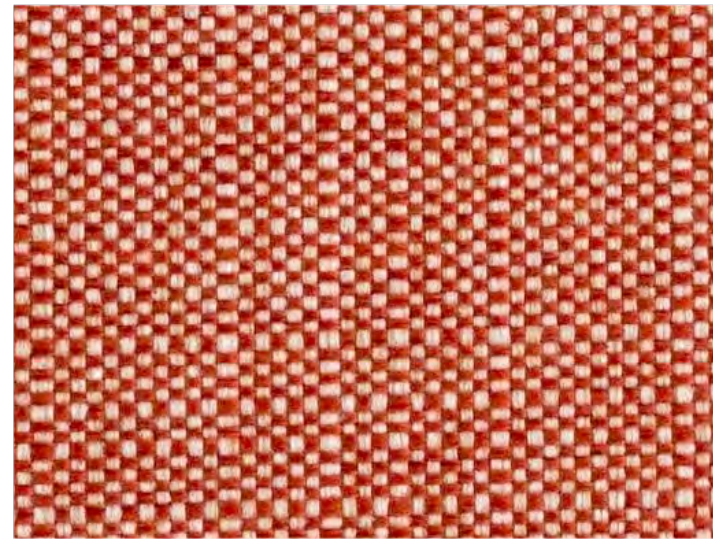
Silver



White



Yellow



Red



Salmon



Sand



Beige



Mouse



Taupe



Terra



Chocolate

BABEL

FABRIC TYPE	COMPOSITION	DURABILITY	LIGHTFASTNESS	PILLING	FEATURES	FIRE TESTS
Flat Weave	100% Polyester	90,000 Martindale	4	3 - 5	Easy-to-Clean Breathable	BS 5852 part 1 - Cigarette Test PASS EN 1021-1 - Cigarette Test PASS CA Tech. Bull. 117:2013 / NFPA 260 - Cigarette Test PASS



BLUEWORLD[®]
HUMAN CARE TECHNOLOGY



STANDARD
100
9342CIT
CITEVE

Caution: the displayed colours, due to technical matters, are approximate and may differ from the original



BALTIC

FABRIC TYPE	COMPOSITION	DURABILITY	LIGHTFASTNESS	PILLING	FEATURES	FIRE TESTS
Chenille	100% Polyester	35,000 Martindale	5	4	Anti-Stain	BS 5852 part 1 - Cigarette Test PASS EN 1021-1 - Cigarette Test PASS CA Tech. Bull. 117:2013 / NFPA 260 - Cigarette Test PASS



Caution: the displayed colours, due to technical matters, are approximate and may differ from the original



White



Sand



Pale Rose



Paprika



Cinnamon



Aqua



Pine



Hunter



Dark Forest



Fossil



Pebble



Dove



Stone



Shadow



Charcoal

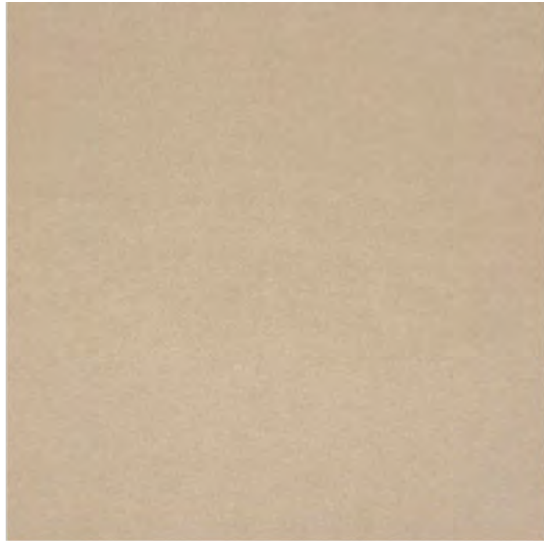
BOUCLÉ

FABRIC TYPE	COMPOSITION	DURABILITY	LIGHTFASTNESS	PILLING
Bouclé	100% Polyester	80,000 Martindale	3	4

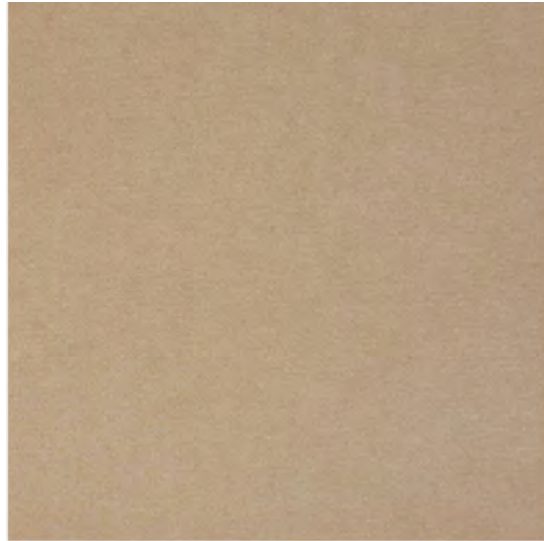
Caution: the displayed colours, due to technical matters, are approximate and may differ from the original



Pearl



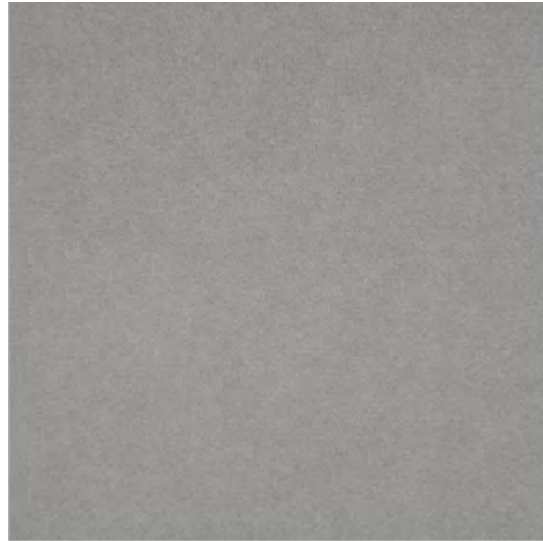
Beige



Lion



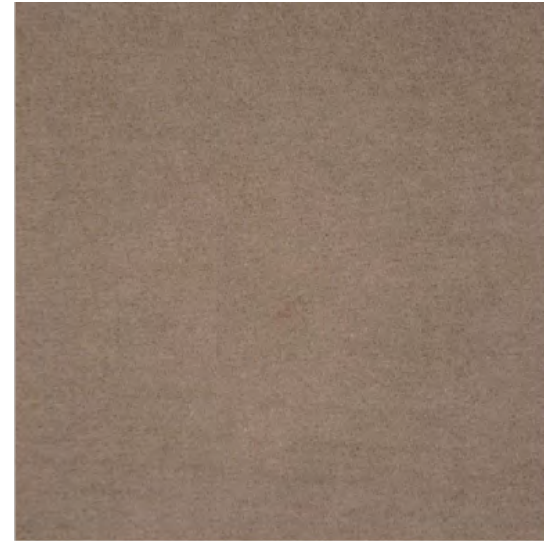
Fog



Stone



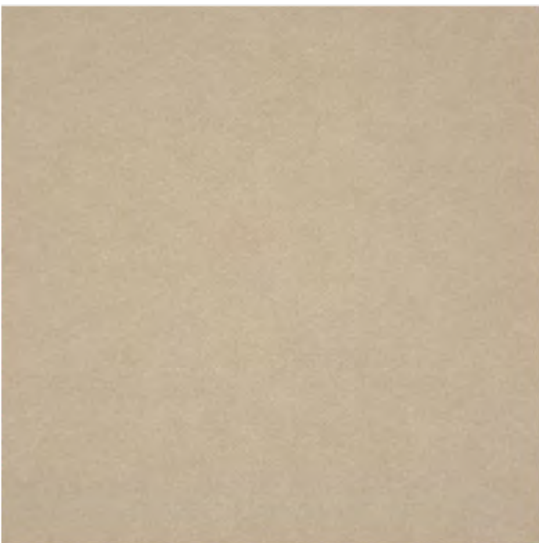
Elephant



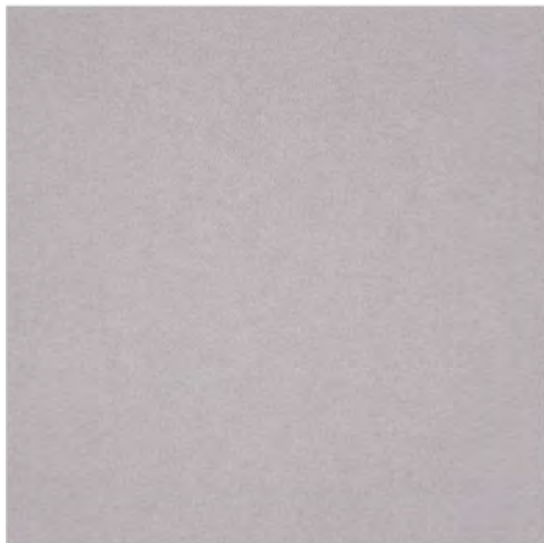
Taupe



Ebony



Sand



Light Violet



Pink



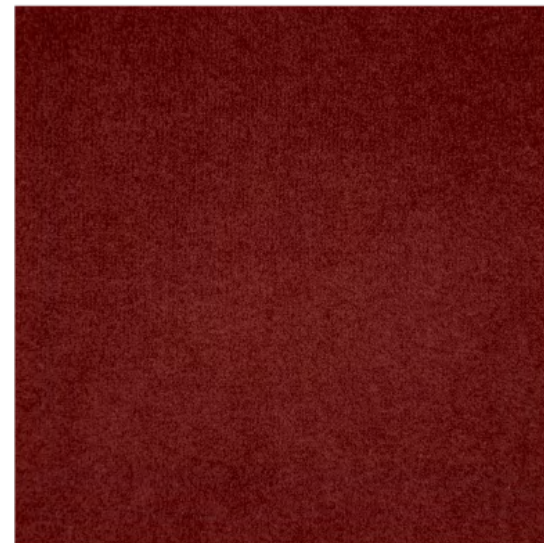
Salmon



Cuoio



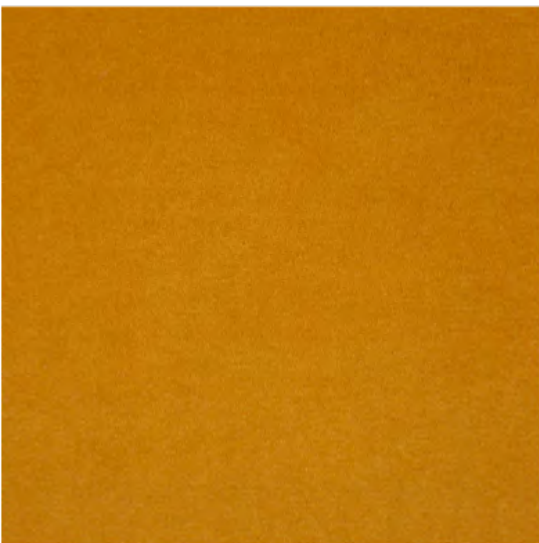
Terracotta



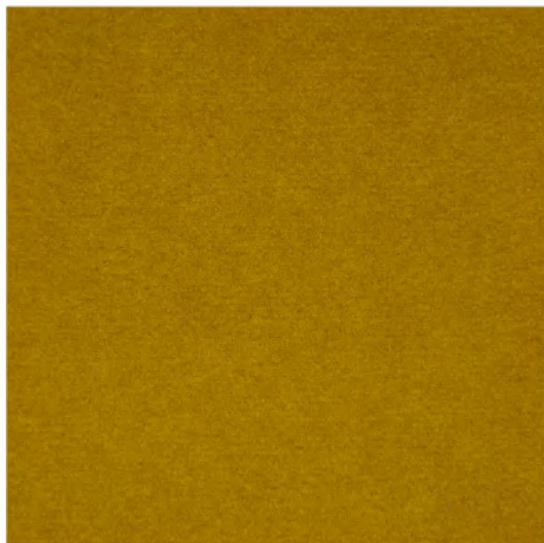
Marsala



Bordeaux



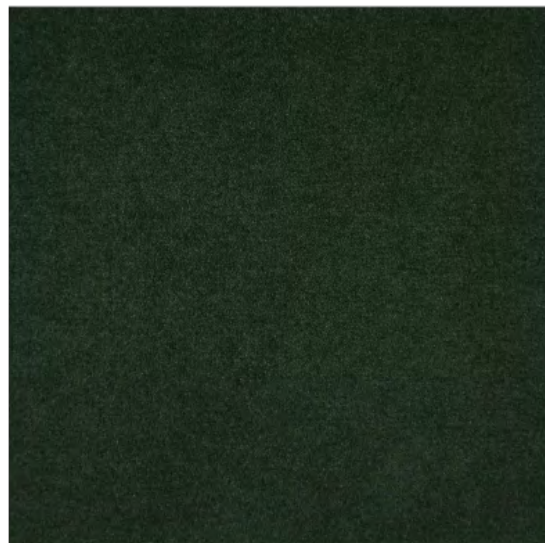
Mostaza



Olive



Forest



Deep Green



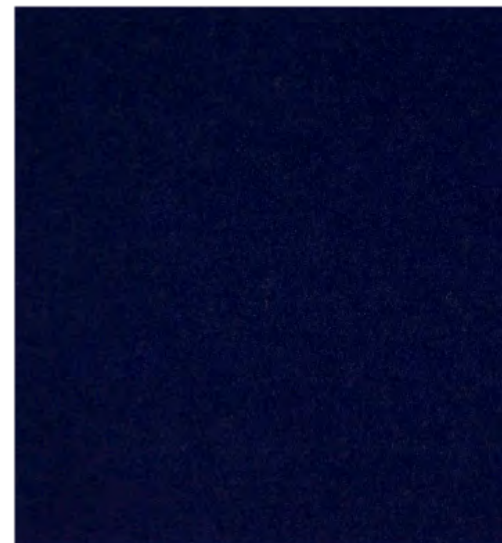
Safira



Dark Blue



Ocean



Deep Blue

CASINO

FABRIC TYPE	COMPOSITION	DURABILITY	LIGHTFASTNESS	PILLING	FEATURES	FIRE TESTS
Velvet - Matte Finish	100% Polyester	100,000 Martindale	4 - 5	4 - 5	Anti-Stain Pet Friendly	BS 5852 part 1 - Cigarette Test PASS EN 1021-1 - Cigarette Test PASS CA Tech. Bull. 117:2013 / NFPA 260 - Cigarette Test PASS



BLUEWORLD[®]
HUMAN CARE TECHNOLOGY

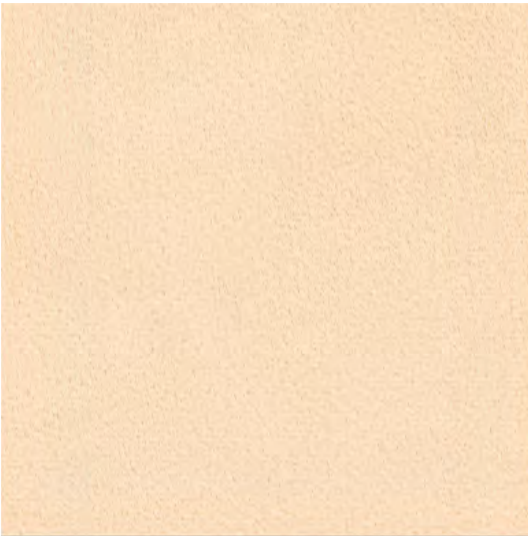


STANDARD
100
9342CIT
CITEVE

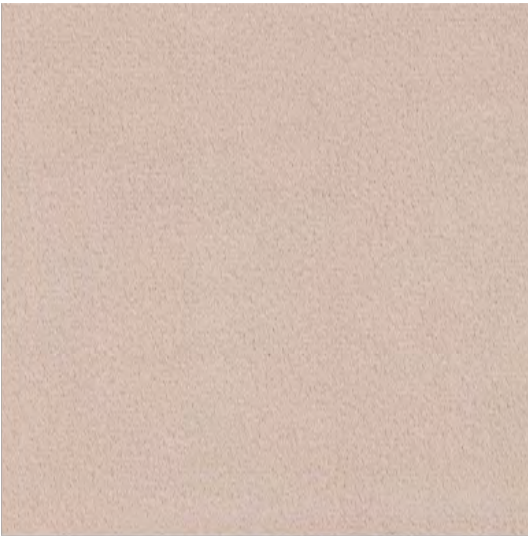
Caution: the displayed colours, due to technical matters, are approximate and may differ from the original



Milk



Cream



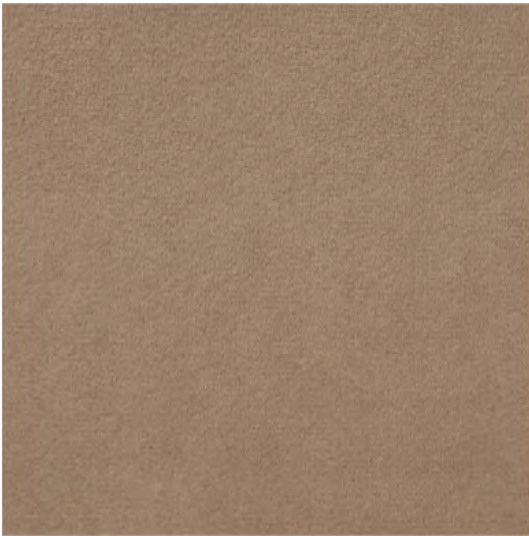
Warm Grey



Sand



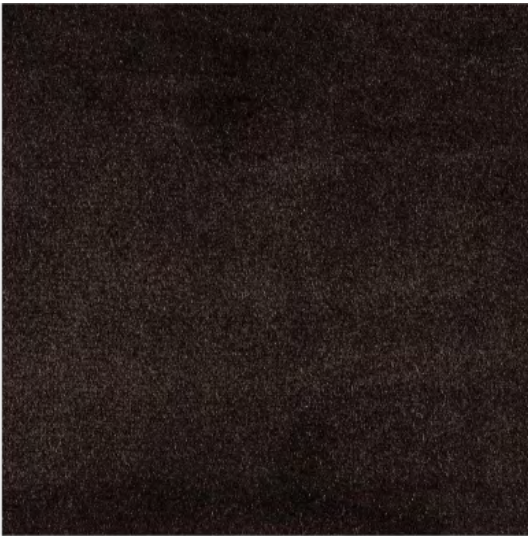
Camel



Taupe



Mink



Ebony



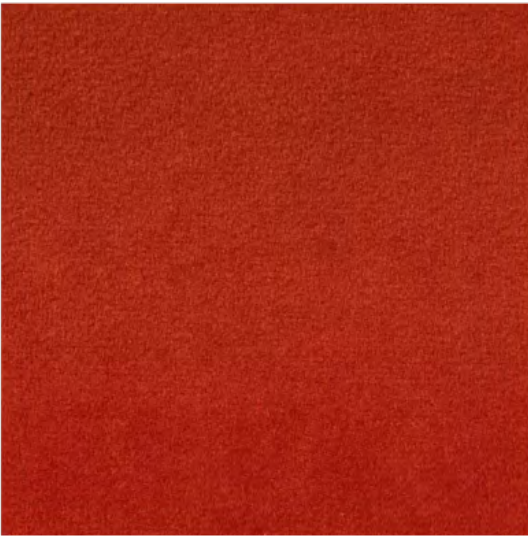
Mostaza



Masai



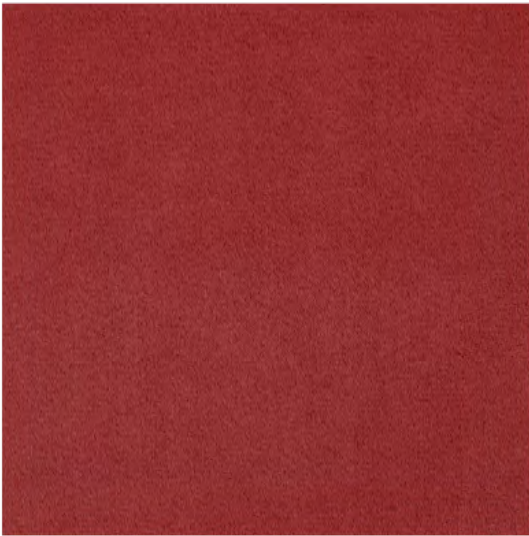
Copper



Rust



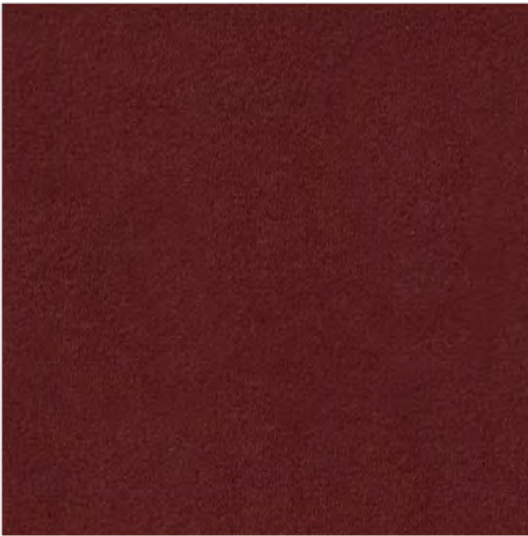
Mauve



Marsala



Red



Bourdeaux



Cement



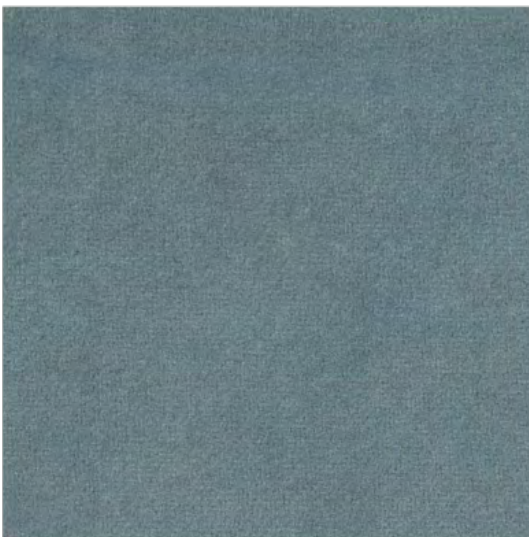
Olive



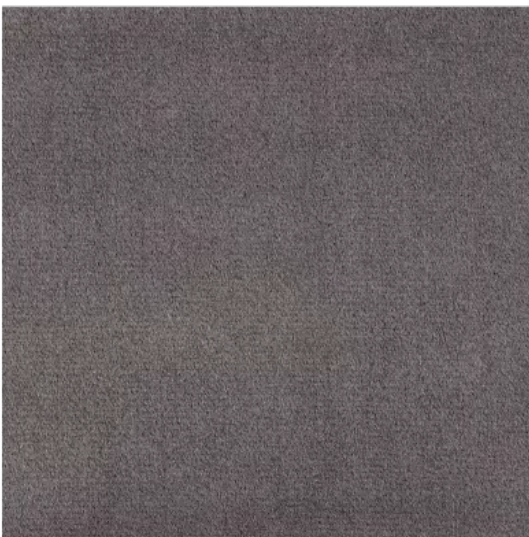
Forest



Emerald



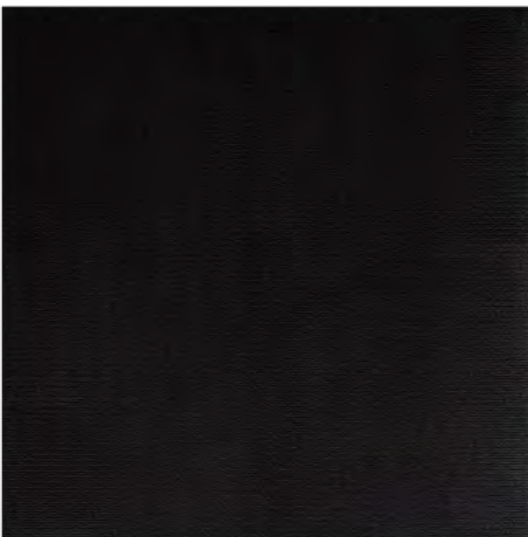
Steel Blue



Mid Grey



Navy



Black

HARALD

FABRIC TYPE	COMPOSITION	DURABILITY	LIGHTFASTNESS	PILLING	FEATURES	FIRE TESTS
Velvet - Soft Sheen	100% Cotton	50,000 Martindale	3	5	Liquid Repellent	BS 5852 part 1 - Cigarette Test PASS EN 1021-1 - Cigarette Test PASS CA Tech. Bull. 117:2013 / NFPA 260 - Cigarette Test PASS

Caution: the displayed colours, due to technical matters, are approximate and may differ from the original



LONDON

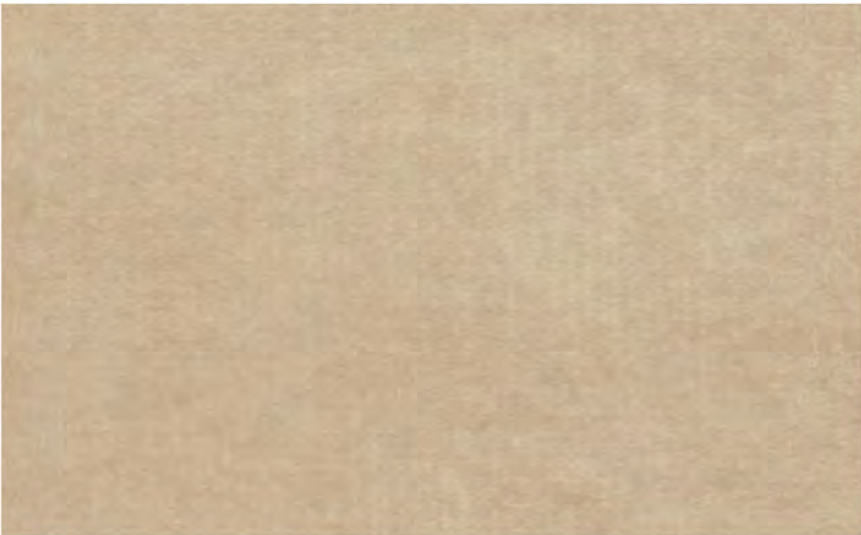
FABRIC TYPE	COMPOSITION	DURABILITY	LIGHTFASTNESS	PILLING	FIRE TESTS
Flat Weave	100% Polyester	80,000 Martindale	5	4	BS 5852 part 1 - Cigarette Test PASS EN 1021-1 - Cigarette Test PASS CA Tech. Bull. 117:2013 / NFPA 260 - Cigarette Test PASS



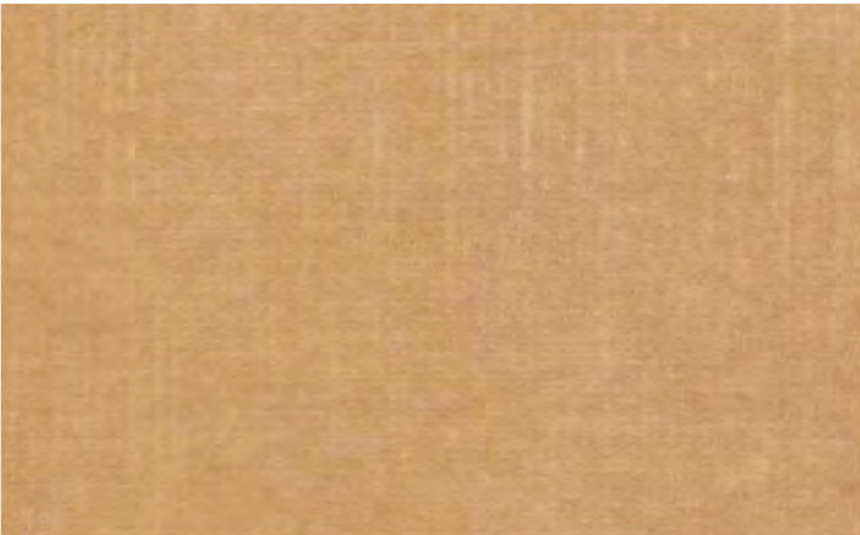
Caution: the displayed colours, due to technical matters, are approximate and may differ from the original



Pearl



Sand



Toffee



Truffle



Coral



Brick



Gold



Cuoio



Terra



Chocolate



Moss



Emerald



Forest



Ash



Black

MACAU

FABRIC TYPE	COMPOSITION	DURABILITY	LIGHTFASTNESS	PILLING	FEATURES	FIRE TESTS
Velvet - Soft Sheen	100% Polyester	90,000 Martindale	5	4 - 5	Anti-Stain Pet Friendly	BS 5852 part 1 - Cigarette Test PASS EN 1021-1 - Cigarette Test PASS CA Tech. Bull. 117:2013 / NFPA 260 - Cigarette Test PASS



BLUEWORLD[®]
HUMAN CARE TECHNOLOGY



STANDARD
100
9342CIT
CITEVE

Caution: the displayed colours, due to technical matters, are approximate and may differ from the original



White



Beige



Taupe



Lilac



Cement



Sand



Ash



Dark Brown



Nude



Yellow



Cognac



Terra



Trufa



Red



Elephant



Mouse



Water Green



Pistachio



Bamboo



Forest



Sky



Turquoise



Ocean



Black

MADEIRA

FABRIC TYPE	COMPOSITION	DURABILITY	LIGHTFASTNESS	PILLING	FIRE TESTS
Textured Flat Weave	100% Polyester	50,000 Martindale	4	5	BS 5852 part 1 - Cigarette Test PASS EN 1021-1 - Cigarette Test PASS CA Tech. Bull. 117:2013 / NFPA 260 - Cigarette Test PASS



BLUEWORLD[®]
HUMAN CARE TECHNOLOGY



STANDARD
100
9342CIT
CITEVE

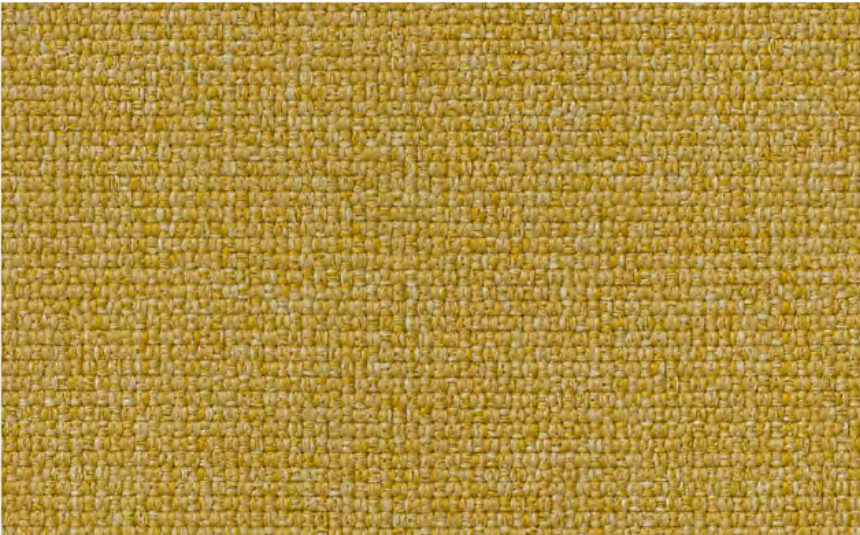
Caution: the displayed colours, due to technical matters, are approximate and may differ from the original



Desert



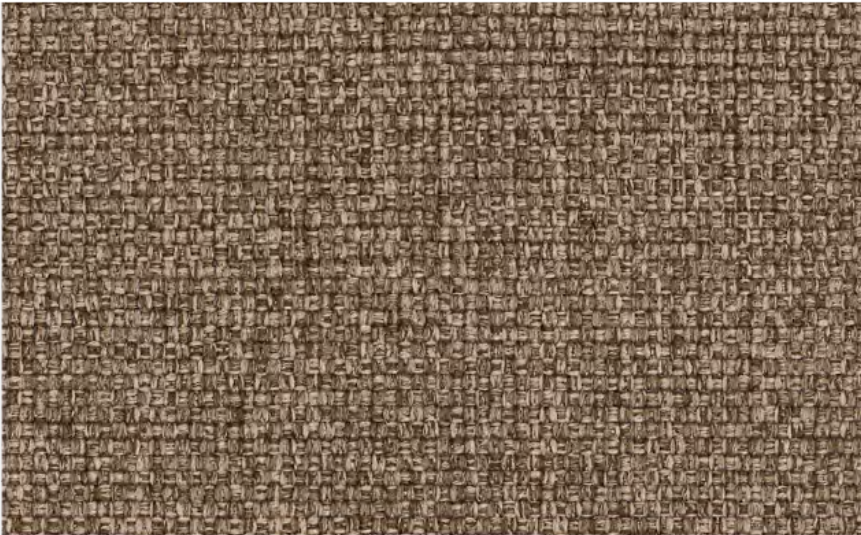
Taupe



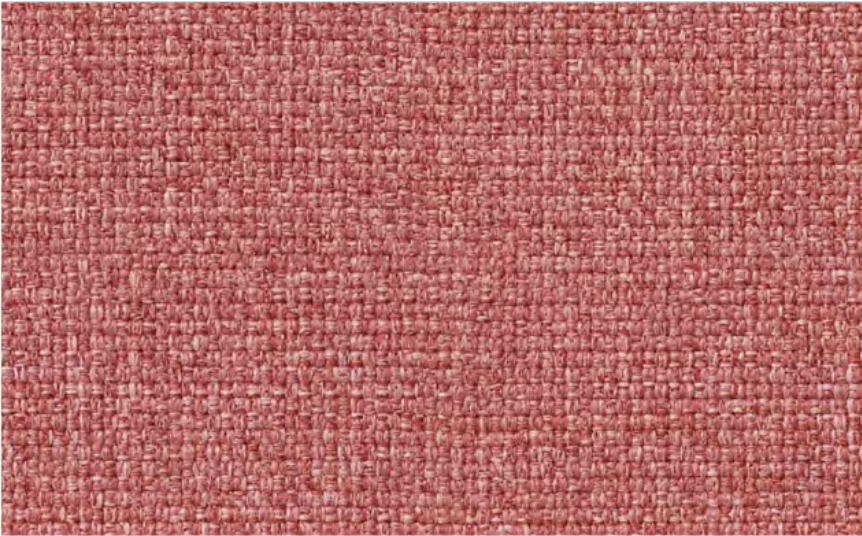
Mustard



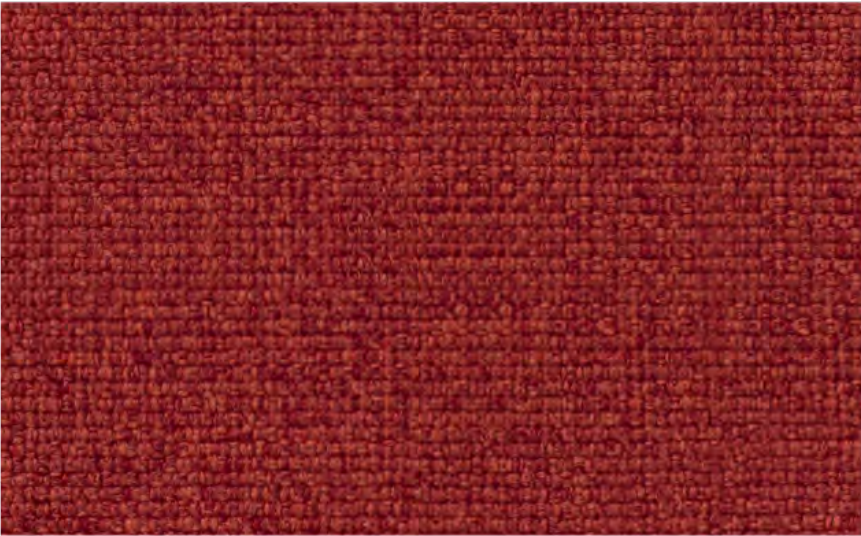
Green



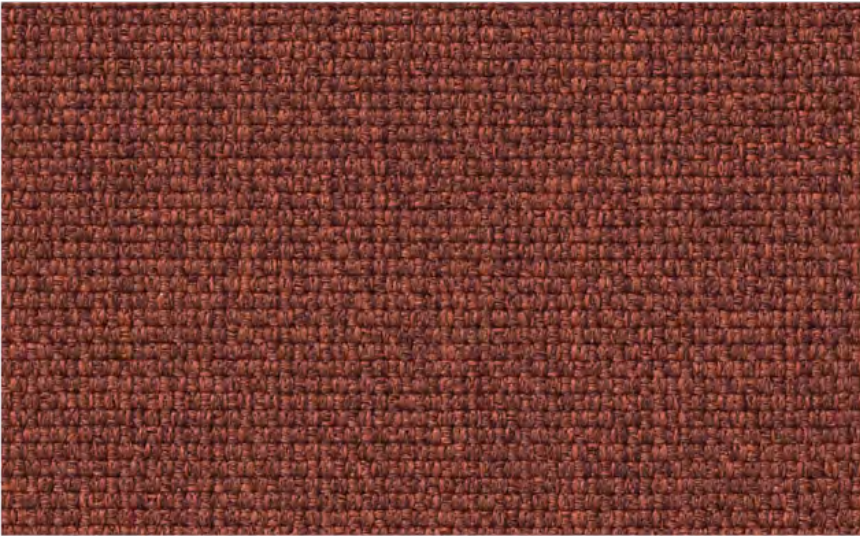
Brown



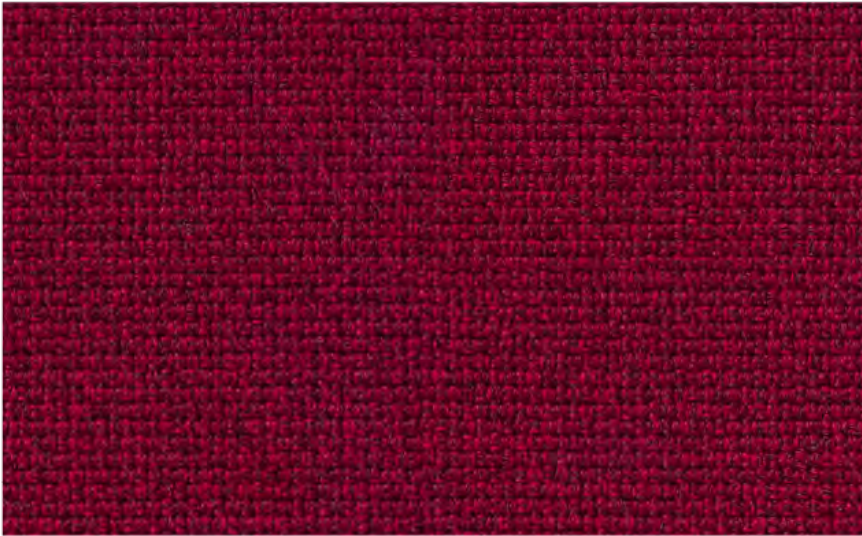
Pale Rose



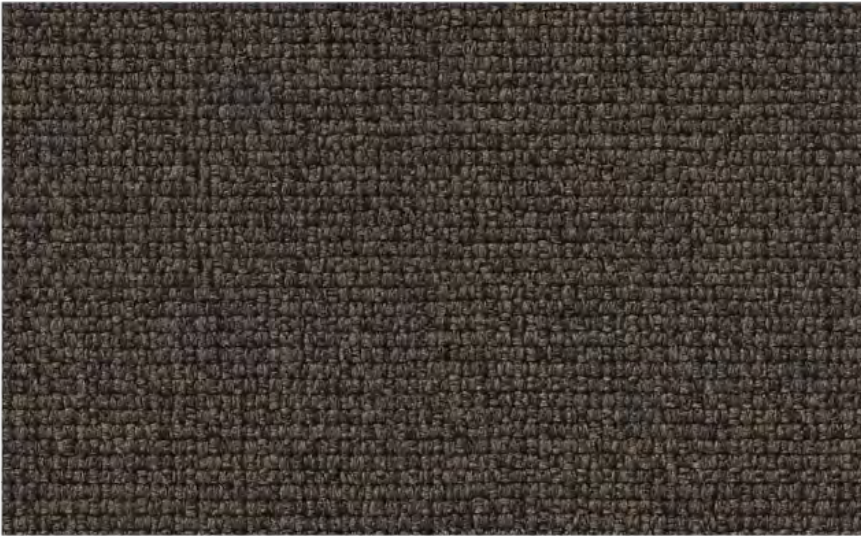
Red



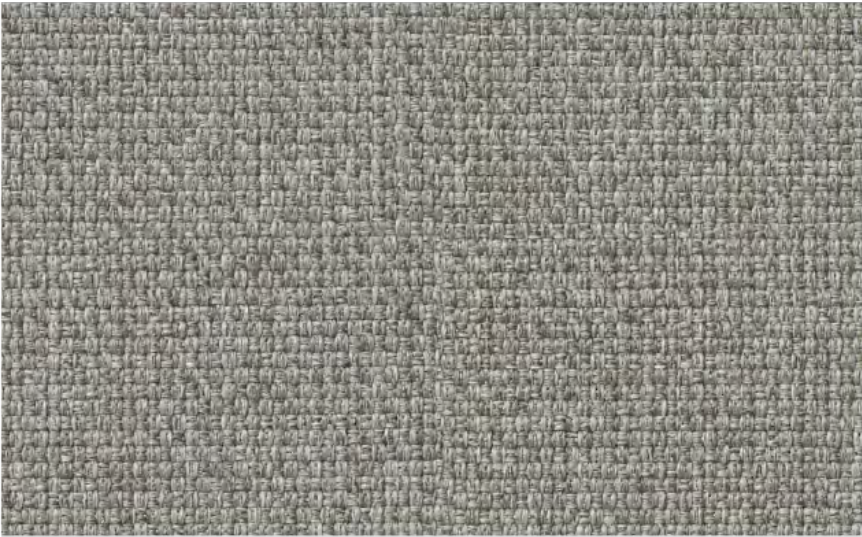
Rust



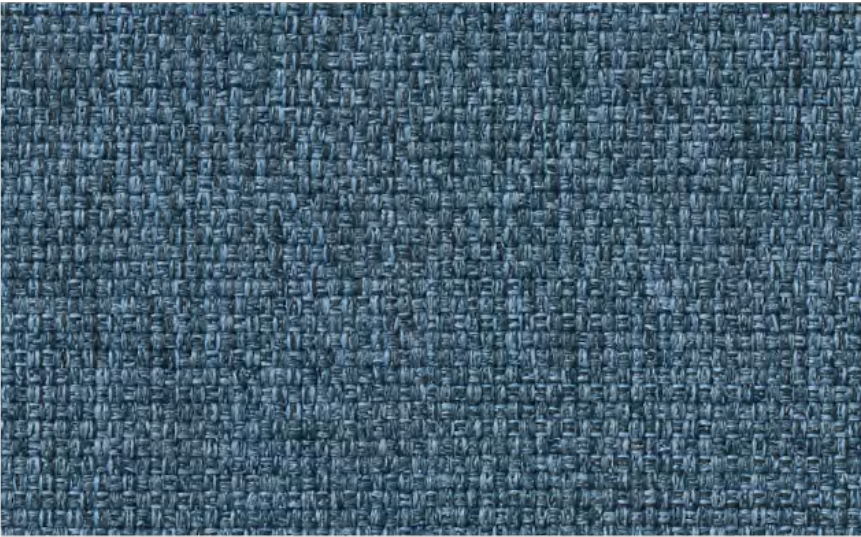
Ox Blood



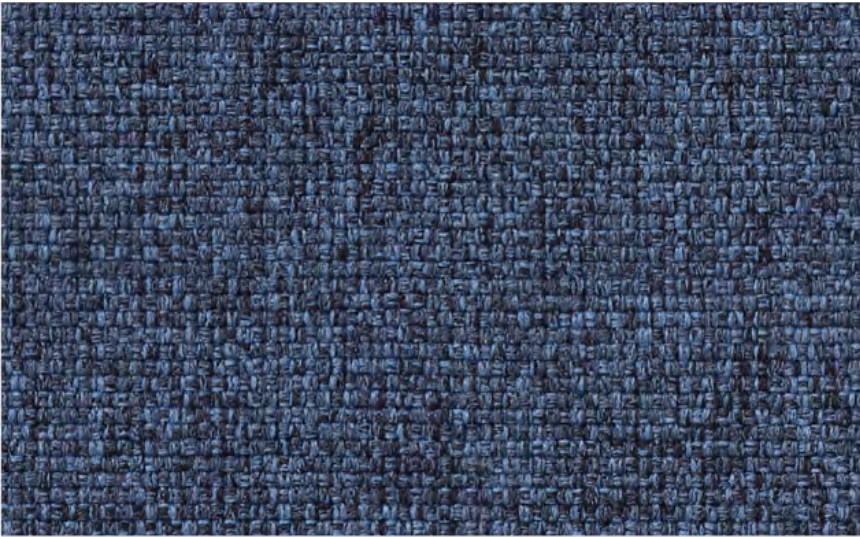
Chocolate



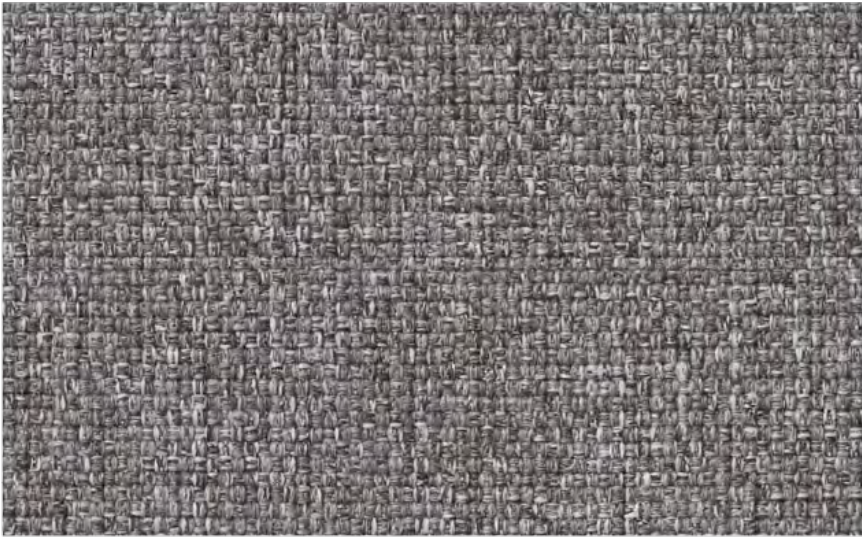
Ash



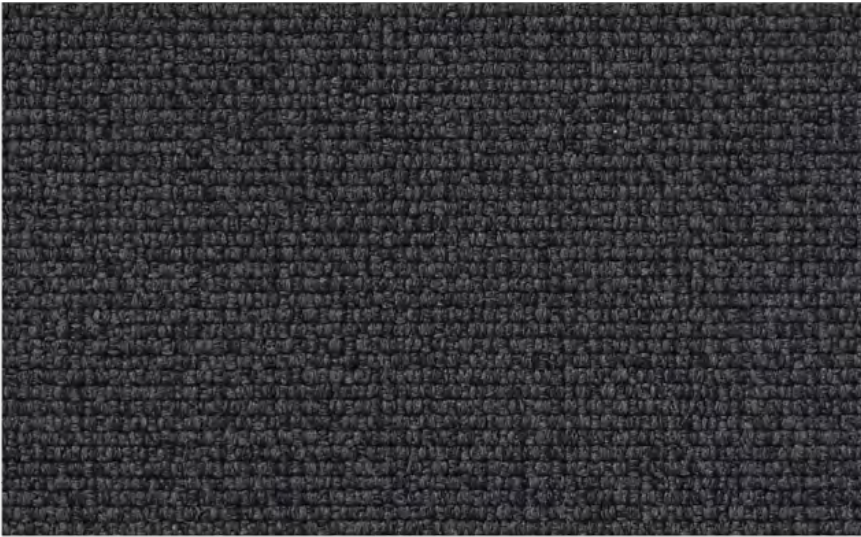
Steel Blue



Marine



Light Grey



Black

MEDLEY

By Gabriel Fabric

FABRIC TYPE	COMPOSITION	DURABILITY	LIGHTFASTNESS	PILLING	FIRE TESTS
Flat Weave	100% Polyester	75,000 Martindale	5 - 7	4 - 5	BS 5852 part 1 - Cigarette Test PASS EN 1021-1 - Cigarette Test PASS CA Tech. Bull. 117:2013 / NFPA 260 - Cigarette Test PASS

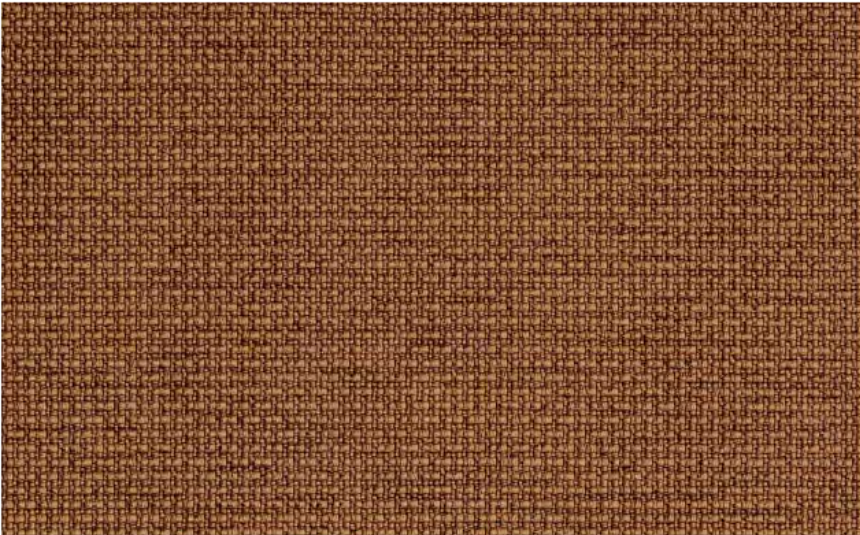
Caution: the displayed colours, due to technical matters, are approximate and may differ from the original



Sand



Mustard



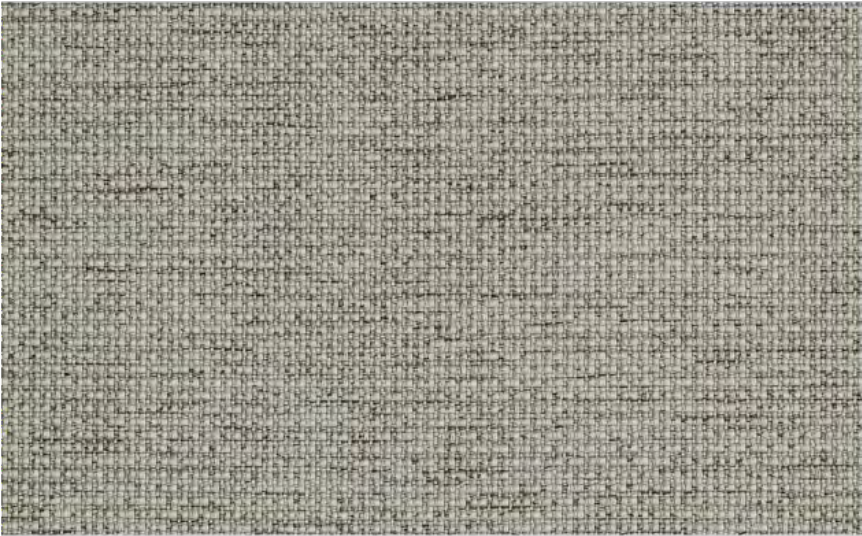
Brick



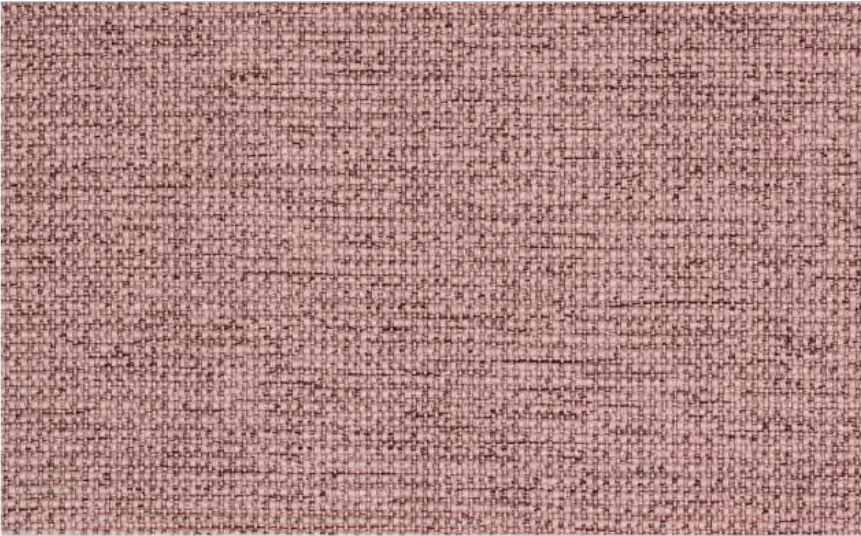
Taupe



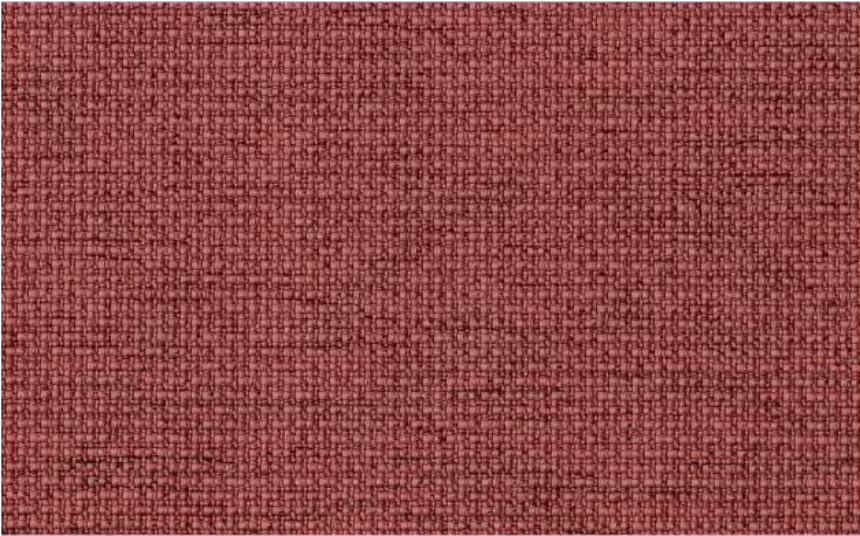
Truffle



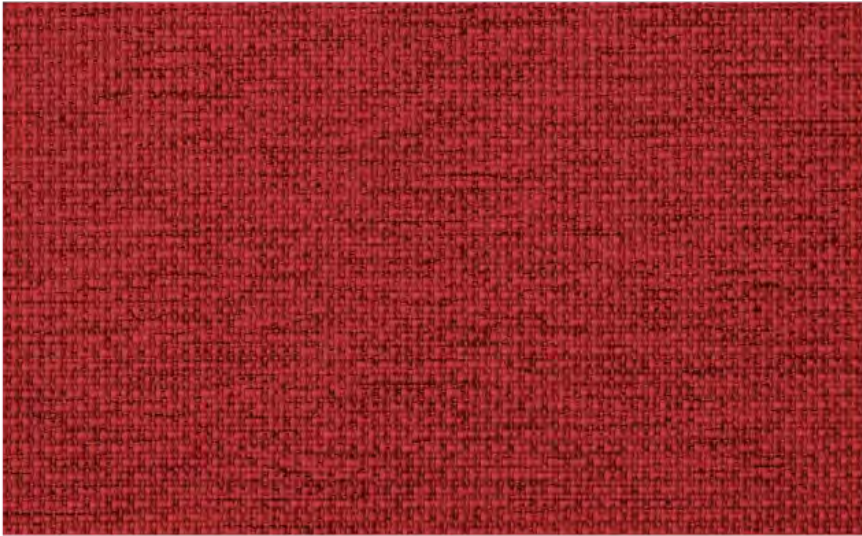
Light Grey



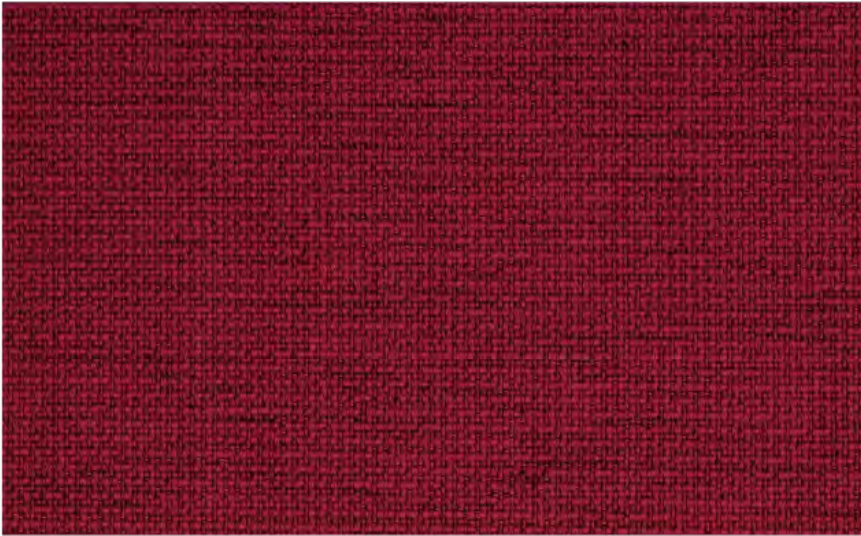
Pink



Rose



Red



Ox Blood



Bamboo



Forest



Grey



Sky



Ocean

MOZART

By Gabriel Fabric

FABRIC TYPE	COMPOSITION	DURABILITY	LIGHTFASTNESS	PILLING	FIRE TESTS
Flat Weave	100% Polyester	80,000 Martindale	5 - 7	4	BS 5852 part 1 - Cigarette Test PASS EN 1021-1 - Cigarette Test PASS CA Tech. Bull. 117:2013 / NFPA 260 - Cigarette Test PASS

Caution: the displayed colours, due to technical matters, are approximate and may differ from the original



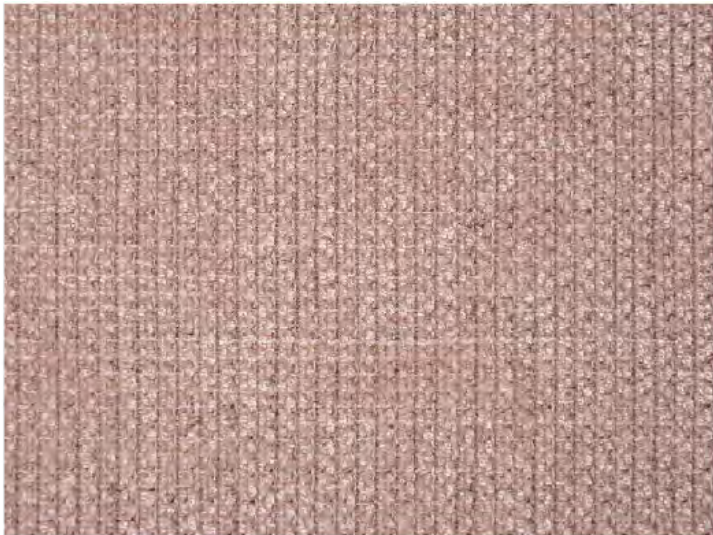
Pearl



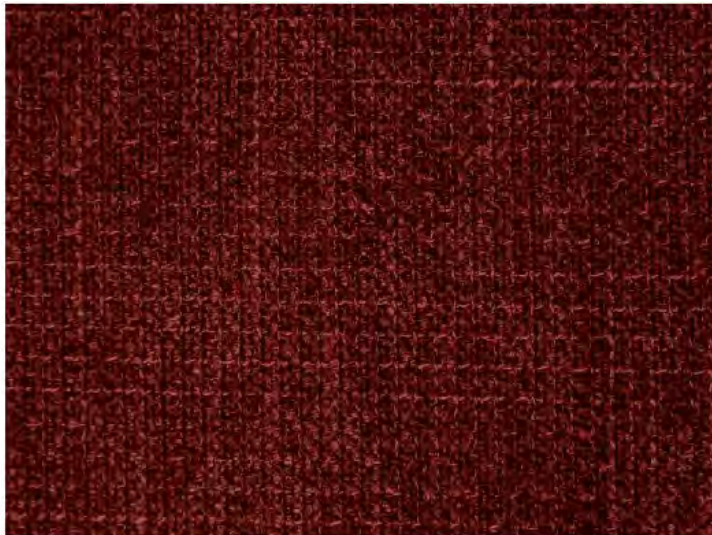
Ivory



Toffee



Pink



Marsala



Deep Purple



Mostaza



Mud



Truffle



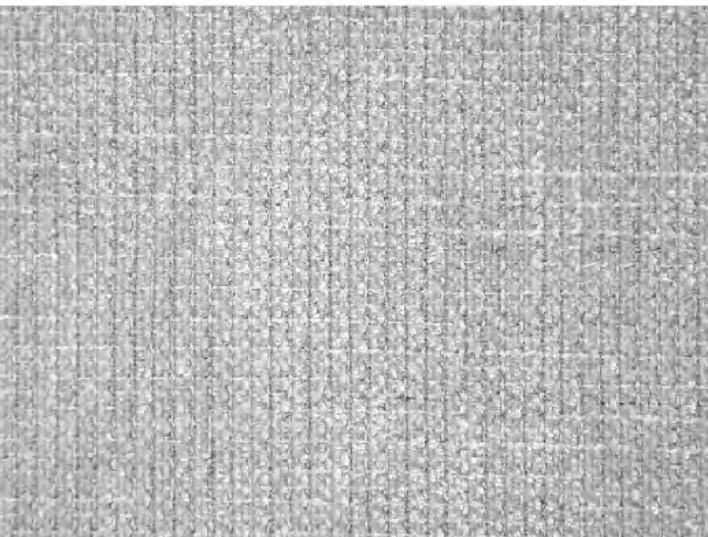
Green



Forest



Chocolate



Cement



Fog



Ocean



Taupe



Anthracite



Black

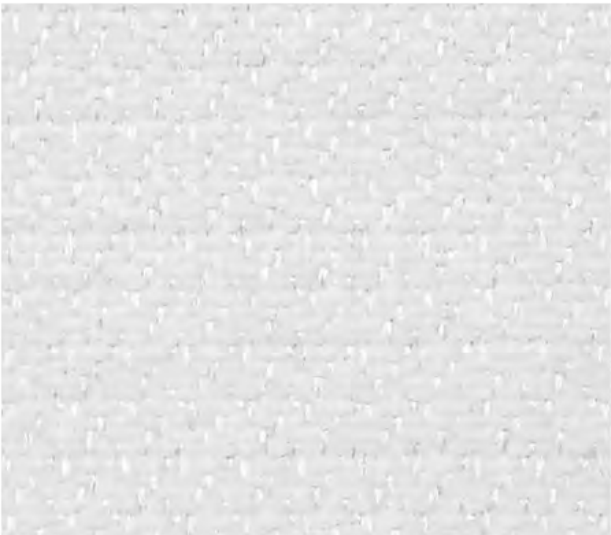
TRIBU

FABRIC TYPE	COMPOSITION	DURABILITY	LIGHTFASTNESS	PILLING	FEATURES	FIRE TESTS
Chenille	100% Polyester	35,000 Martindale	5	4	Anti-Stain	BS 5852 part 1 - Cigarette Test PASS EN 1021-1 - Cigarette Test PASS CA Tech. Bull. 117:2013 / NFPA 260 - Cigarette Test PASS

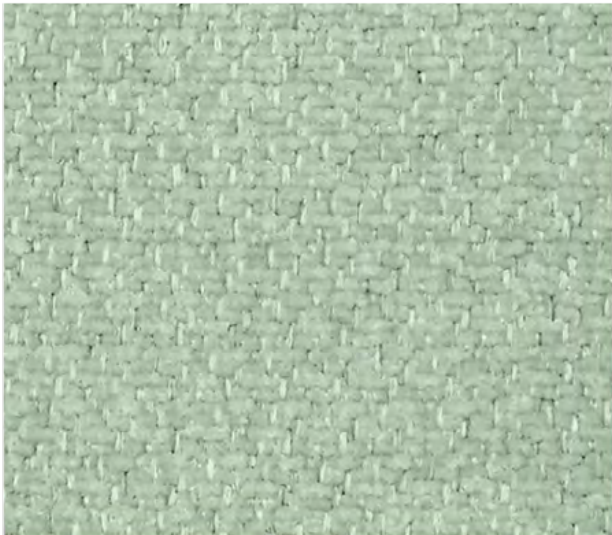


STANDARD 100
9342CIT
CITEVE

Caution: the displayed colours, due to technical matters, are approximate and may differ from the original



White



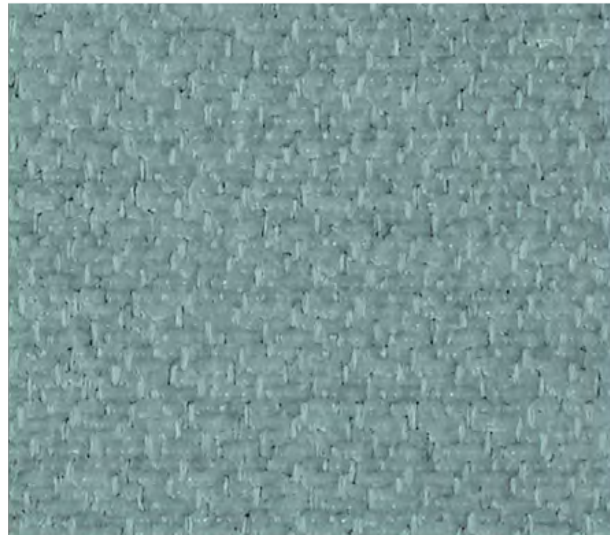
Water Green



Emerald



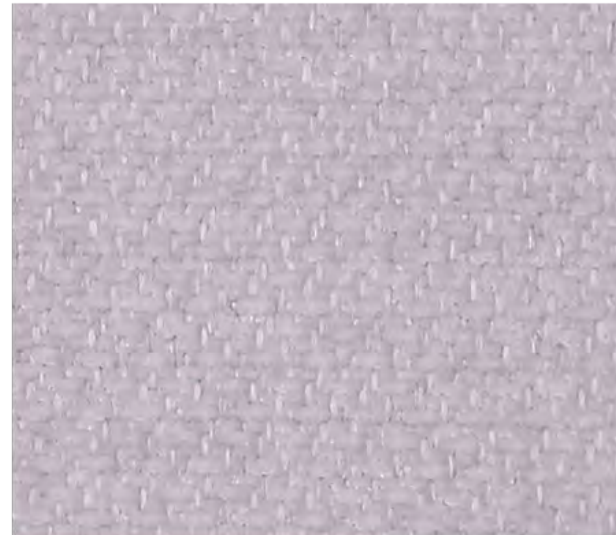
Petrol



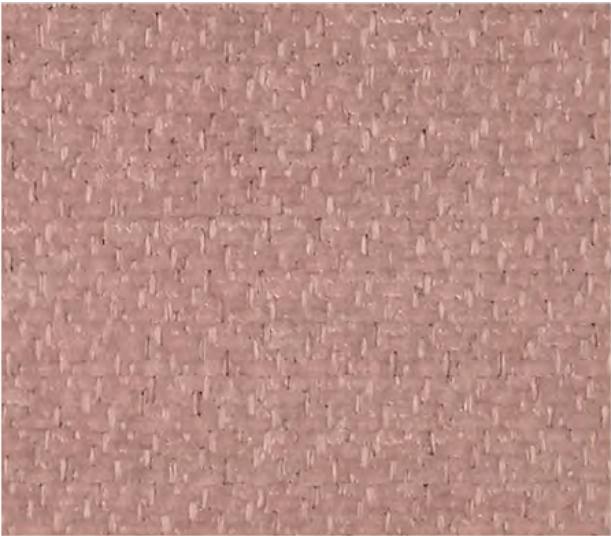
Safira



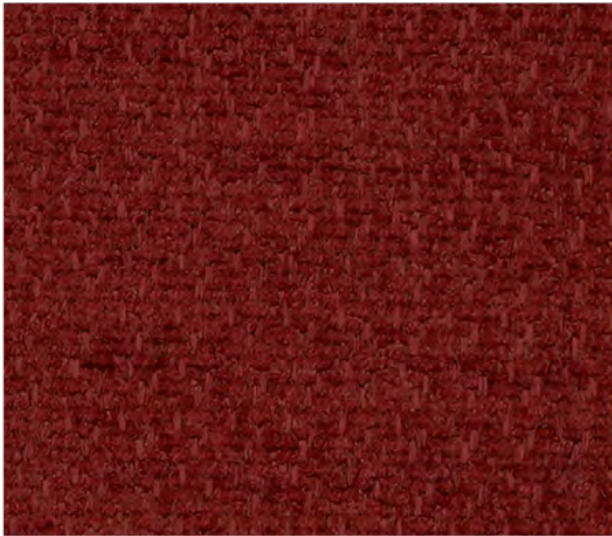
Ice



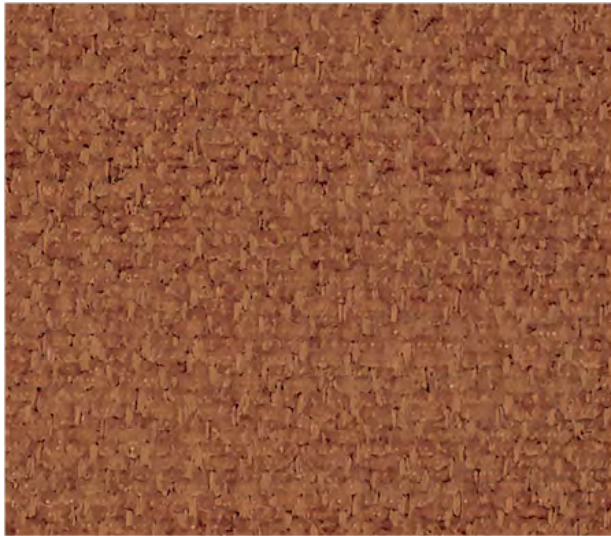
Lavanda



Old Rose



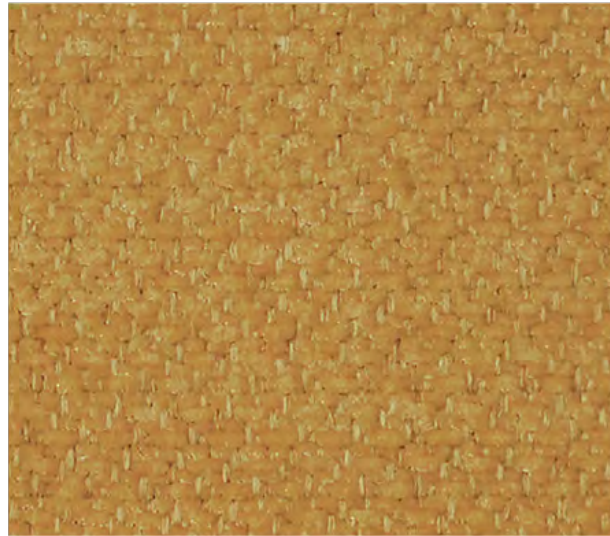
Marsala



Sienna



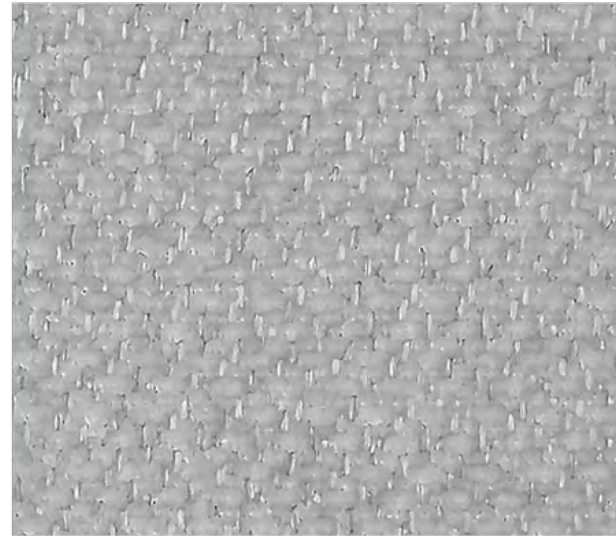
Chocolate



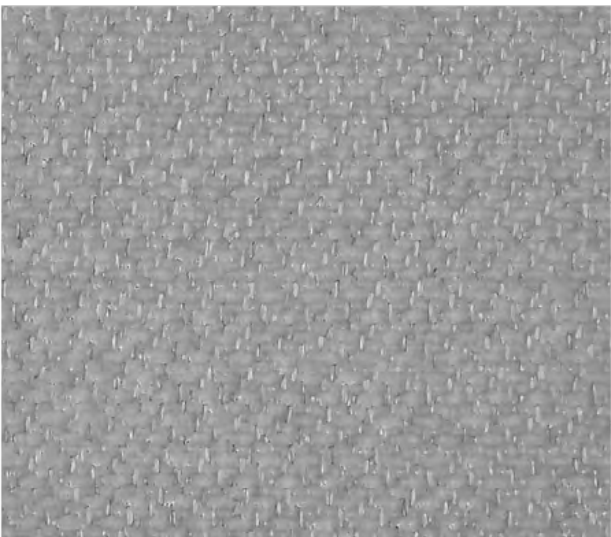
Mustaza



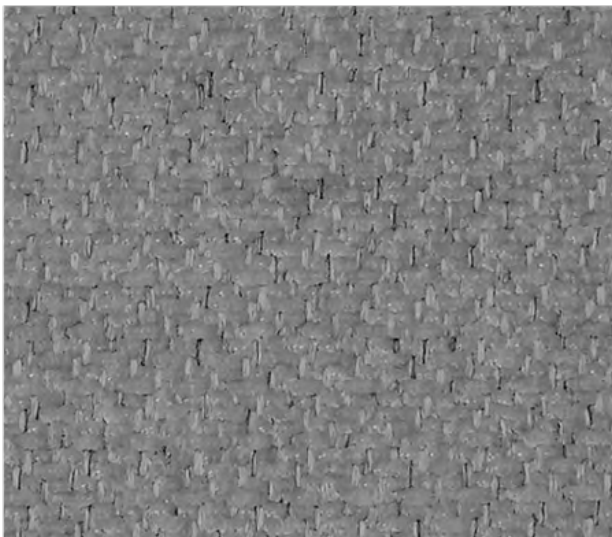
Beige



Cement



Taupe



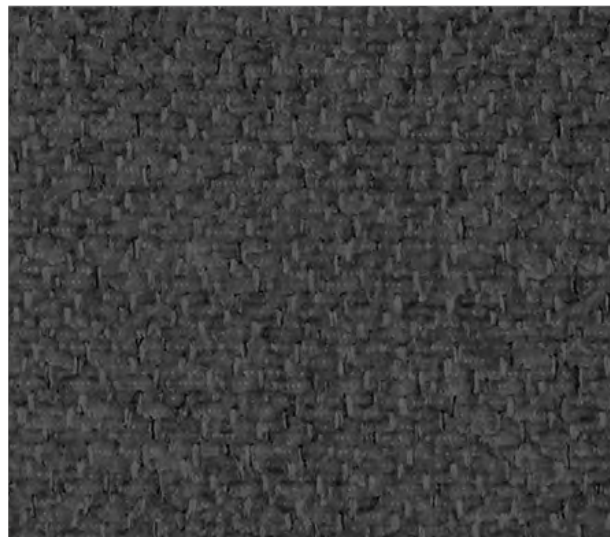
Steel



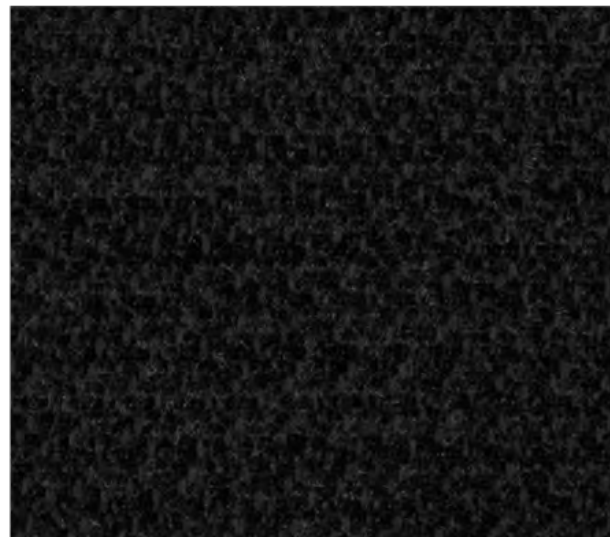
Ocean



Deep Blue



Anthracite



Black

VIENNA

FABRIC TYPE	COMPOSITION	DURABILITY	LIGHTFASTNESS	PILLING	FEATURES	FIRE TESTS
Chenille	100% Polyester	65,000 Martindale	5	4	Anti-Stain	BS 5852 part 1 - Cigarette Test PASS EN 1021-1 - Cigarette Test PASS CA Tech. Bull. 117:2013 / NFPA 260 - Cigarette Test PASS



BLUEWORLD[®]
HUMAN CARE TECHNOLOGY



STANDARD
100
9342CIT
CITEVE

Caution: the displayed colours, due to technical matters, are approximate and may differ from the original



Cream



Silver



Almond



Elephant



Ebony



Taupe



Camel



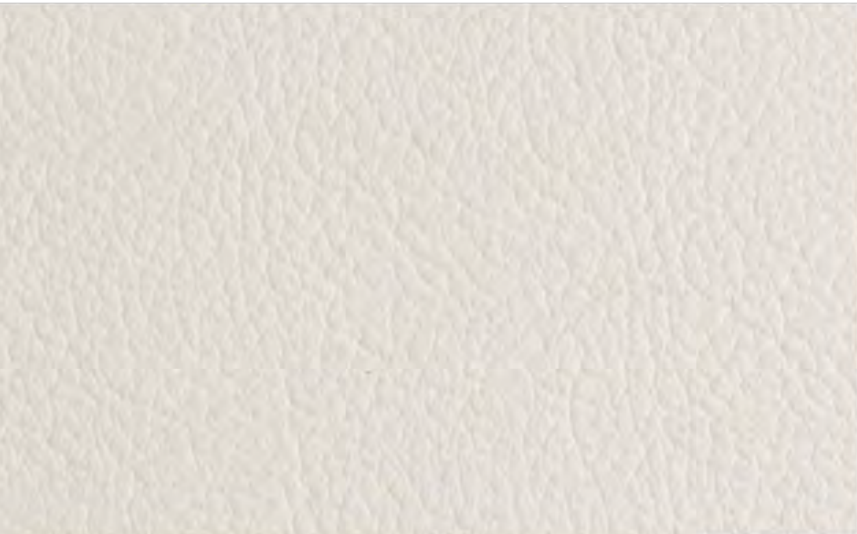
Tabacco



Avocat



Forest



Milk



Cement



Ash



Anthracite



Black

FLORIDA

LEATHER TYPE	AVERAGE SKIN THICKNESS	RAWHIDE	PREPARATION	FIRE TESTS
Corrected Leather	0.8 - 1.0 mm	Brazilian Bovine	Corrected and Embossed Grain Protective Top Coat, Soft Handle and Silky Matte Finish	BS 5852:1979 BS EN 1021-1-2:2006

Caution: the displayed colours, due to technical matters, are approximate and may differ from the original



White



Lamb



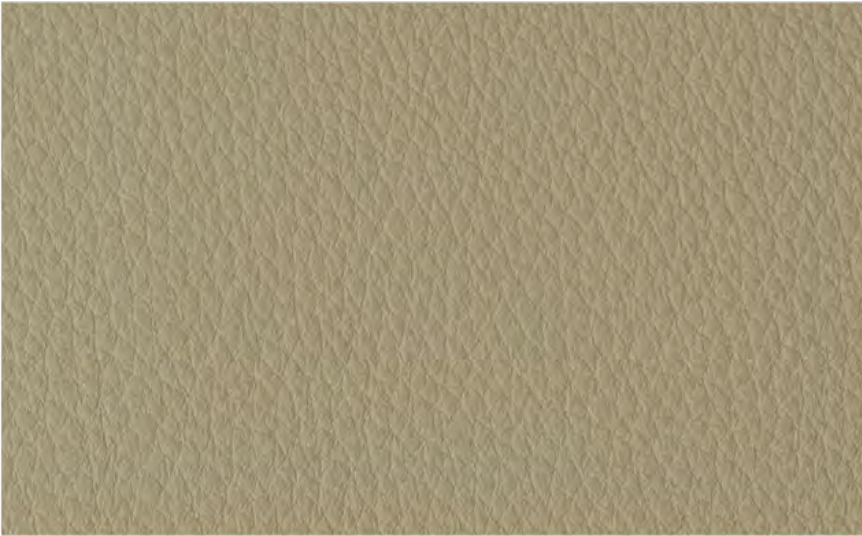
Iceberg



Mouton



Khaki



Earth



Cement



Forest



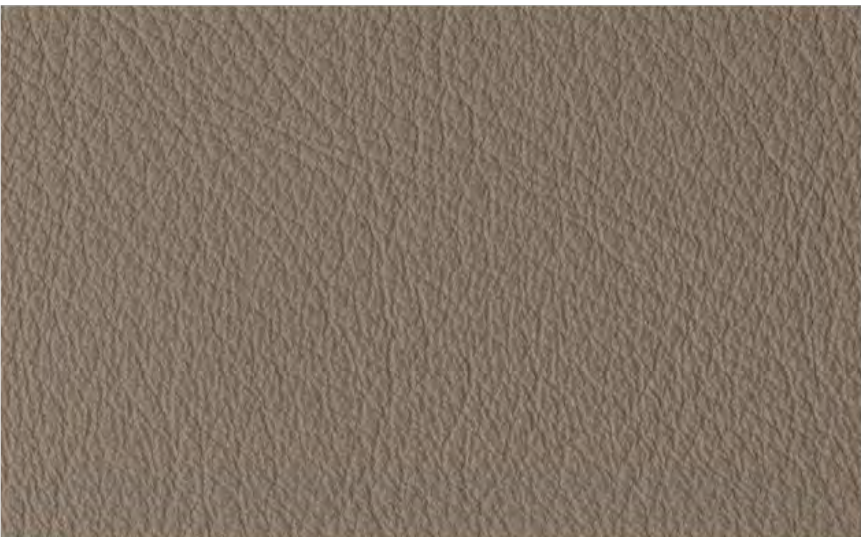
Woody



Bourgandy



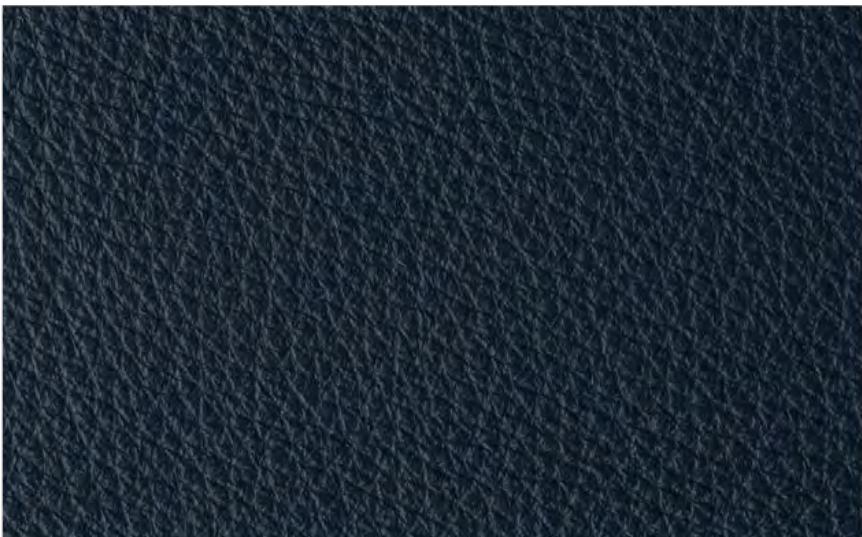
Ash



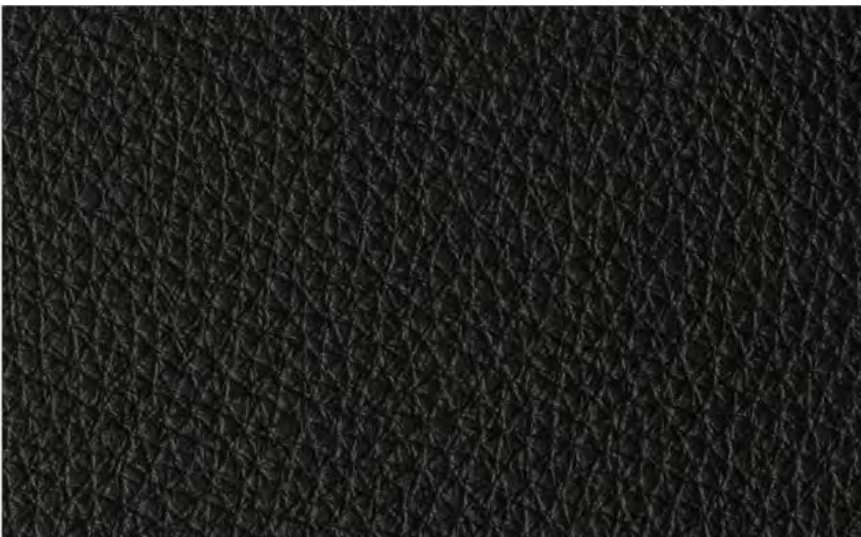
Zine



Fog



Flag



Black

ATLANTIDA

LEATHER TYPE	AVERAGE SKIN THICKNESS	RAWHIDE	PREPARATION	FIRE TESTS
Aniline Leather	1.2 - 1.4 mm	European Bovine	Lightly Buffed Natural Grain	BS 5852:1979 BS EN 1021-1-2:2006

Caution: the displayed colours, due to technical matters, are approximate and may differ from the original



Sand



Lion



Camel



Cognac



Yam



Masai



Wine



Caribou



Cement



Toffee



Seapearl



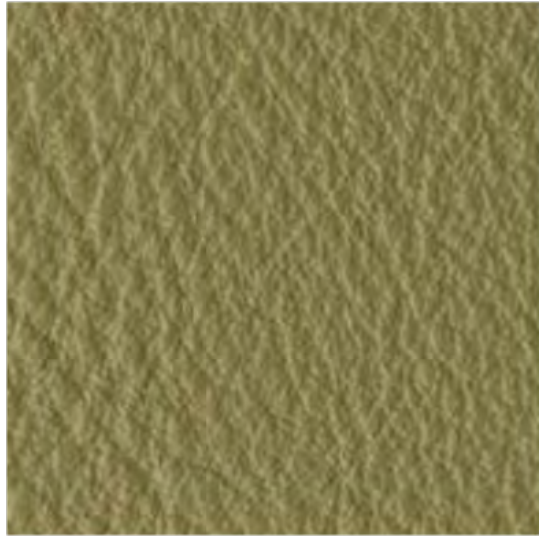
Peral



Stone



Umber



Moss



Bosco



Ivory



White



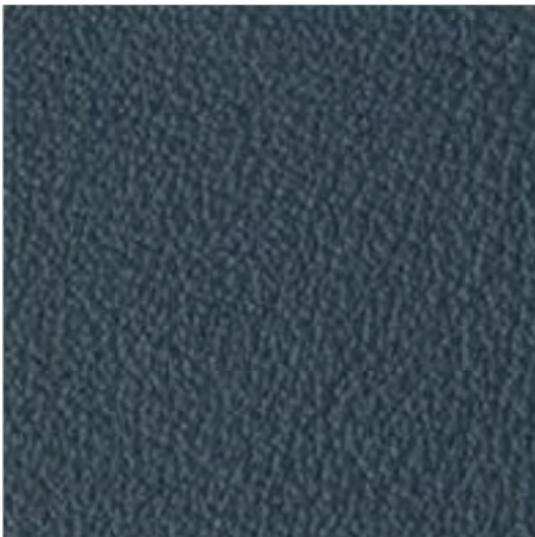
Ice



Zinc



Shadow



Graphite



Gull



Black

LAGUNA

LEATHER TYPE	AVERAGE SKIN THICKNESS	RAWHIDE	PREPARATION	FIRE TESTS
Aniline Leather	0.9 - 1.1 mm	European Bovine	Lightly Buffed Natural Grain Transparent Protective Coat, Soft Waxy Feel, Semi-Matte Finish	CAL TB-117 (2013, Sec.1) BS 5852:1979 BS EN 1021-1-2:2006

Caution: the displayed colours, due to technical matters, are approximate and may differ from the original



info@modern-approach.com