

# UPHOLSTERY OPTIONS

**BUDAPEST SOFA**





APOLLO

FABRIC TYPE	COMPOSITION	DURABILITY	LIGHTFASTNESS	PILLING	FEATURES	FIRE TESTS
Chenille	100% Polyester	100,000 Martindale	4 - 5	4 - 5	Anti-Stain Liquid Repellent	BS 5852 part 1 - Cigarette Test PASS EN 1021-1 - Cigarette Test PASS CA Tech. Bull. 117:2013 / NFPA 260 - Cigarette Test PASS



BLUEWORLD<sup>®</sup>  
HUMAN CARE TECHNOLOGY



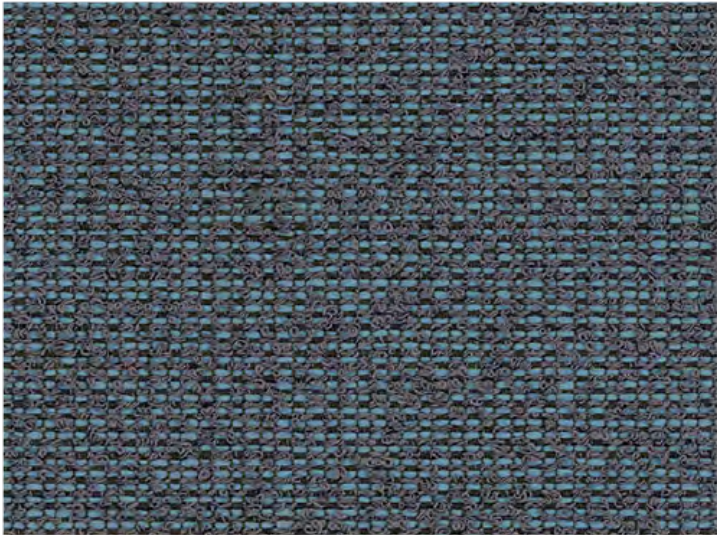
STANDARD  
100  
9342CIT  
CITEVE

Caution: the displayed colours, due to technical matters, are approximate and may differ from the original

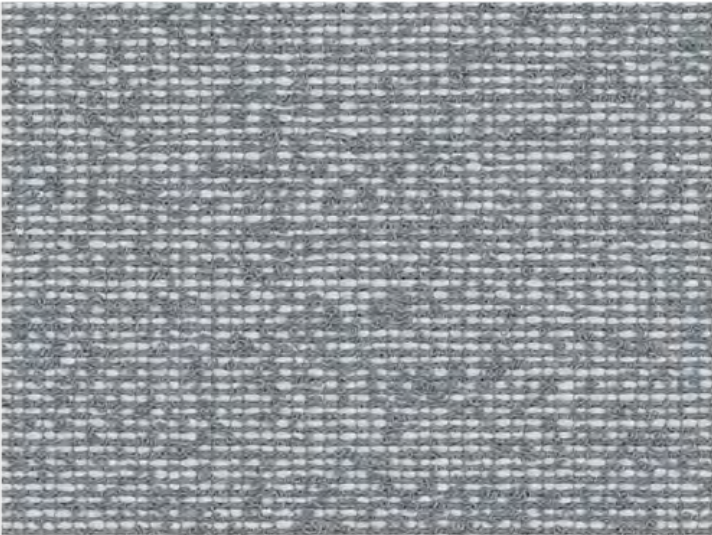




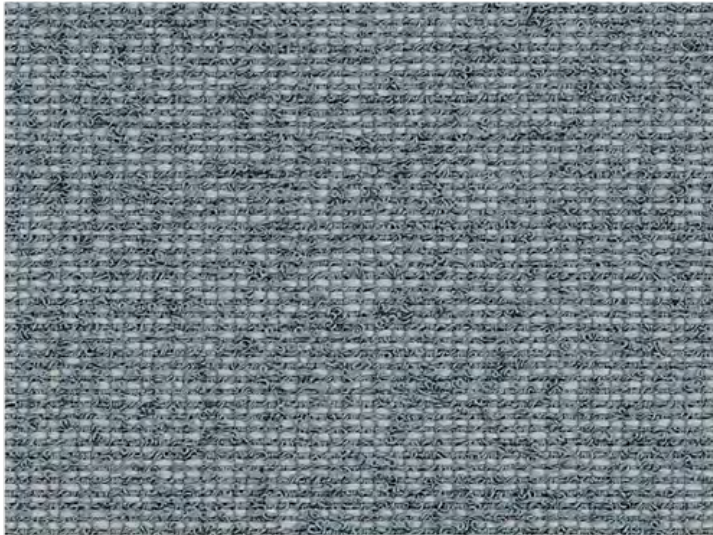
Saturation



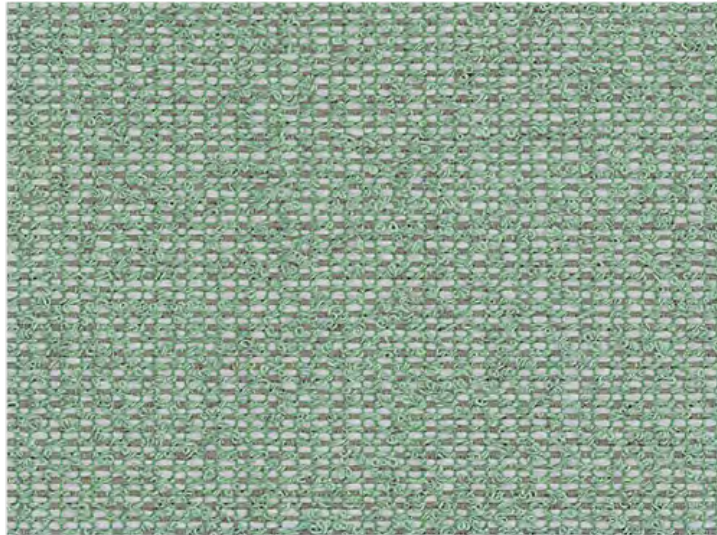
Tempera



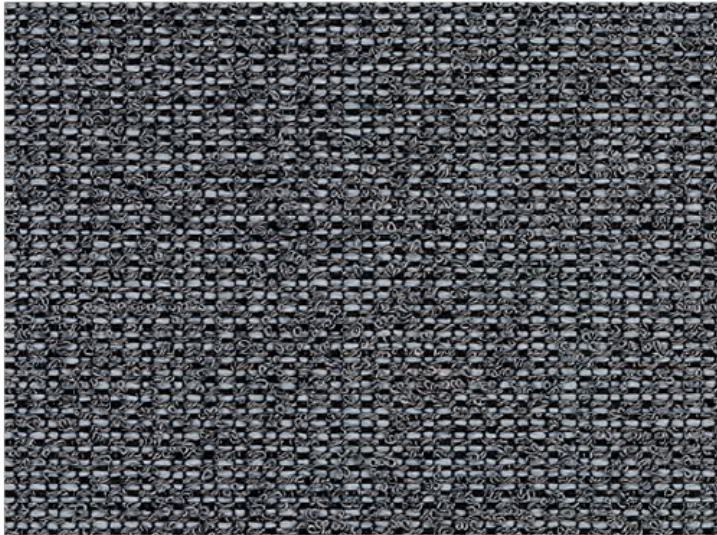
Purity



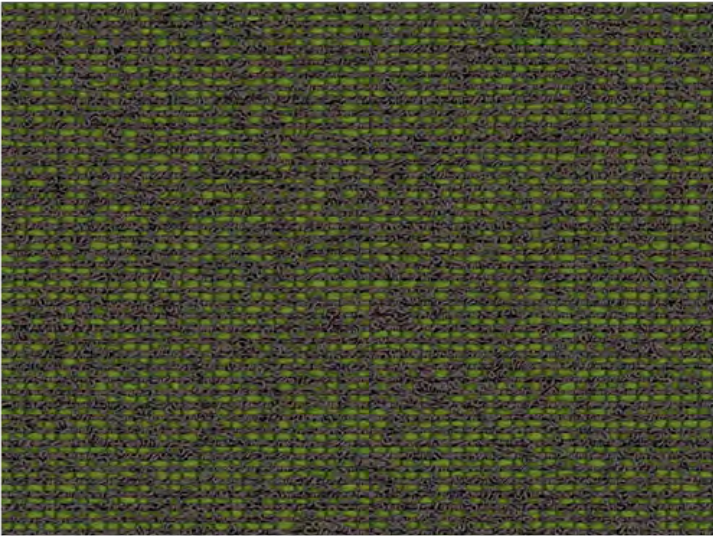
Prism



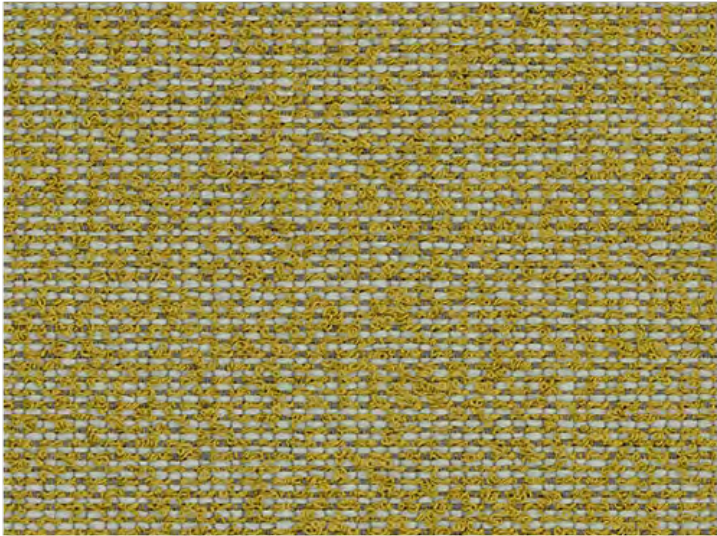
Gamut



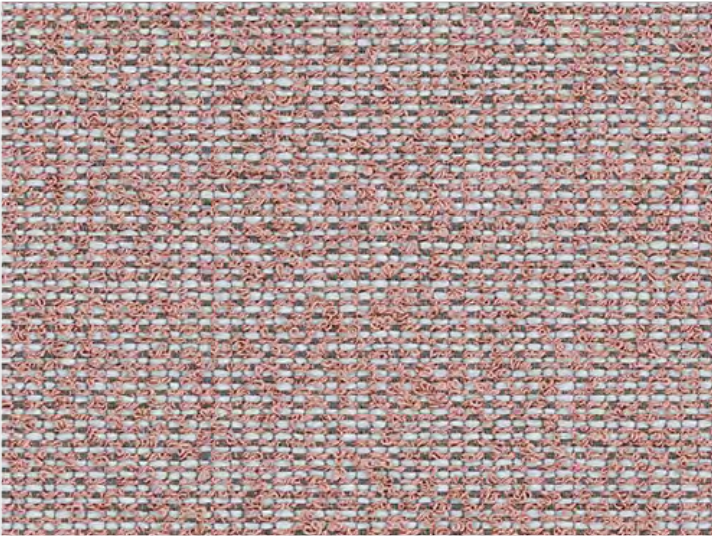
Tone



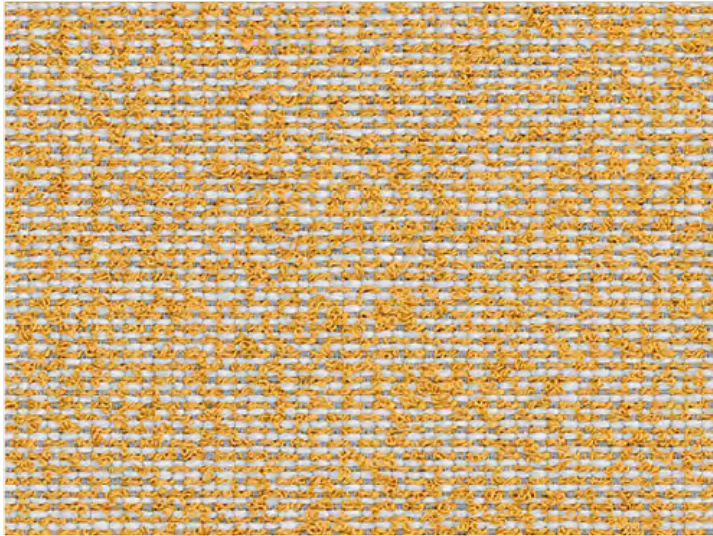
Goethe



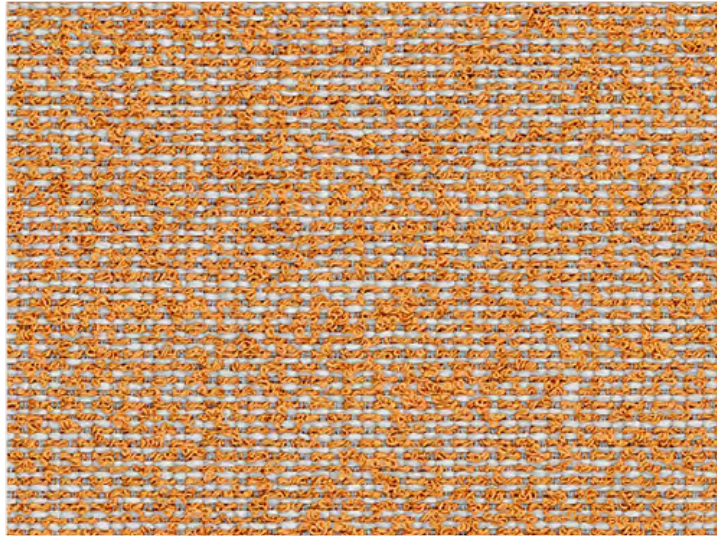
Hue



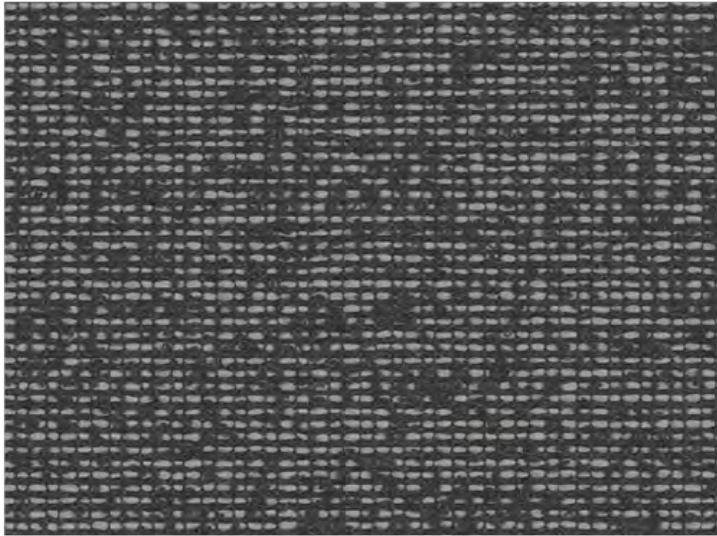
Pigment



Glow



Newton



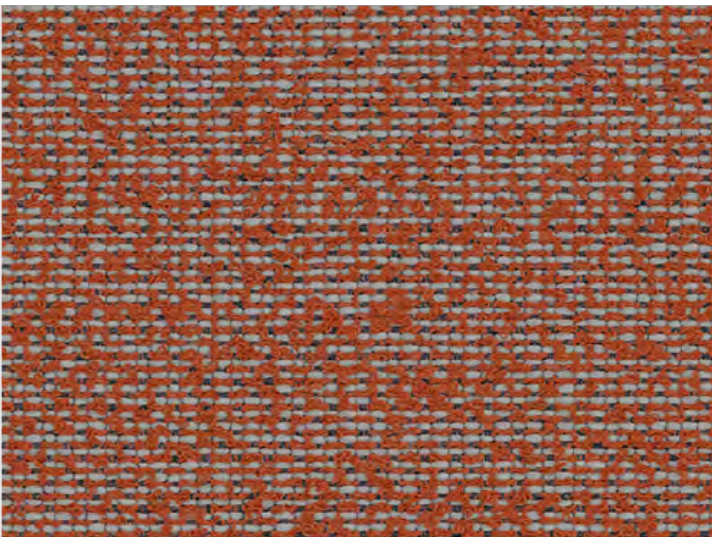
Dark



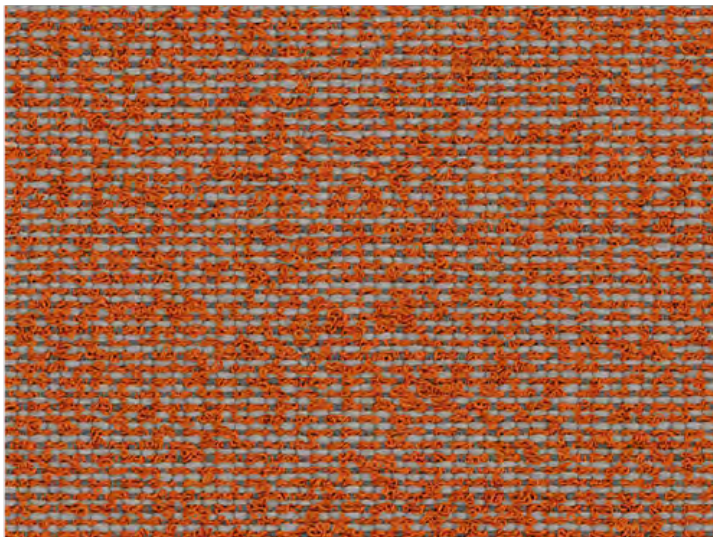
Hint



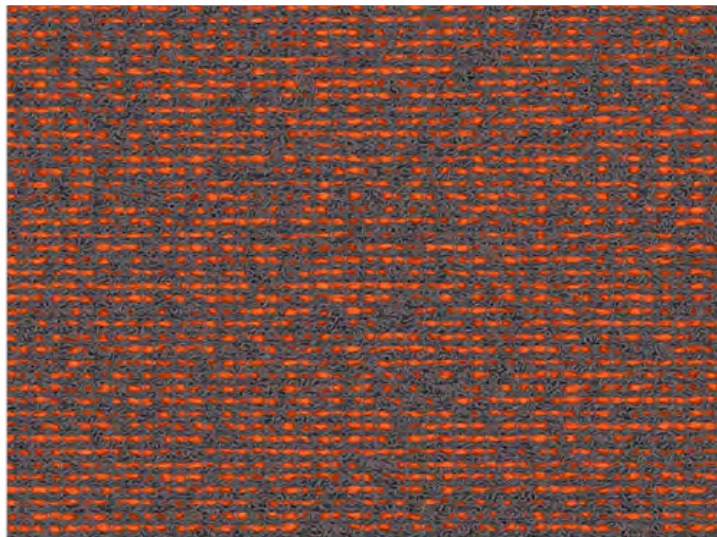
Trace



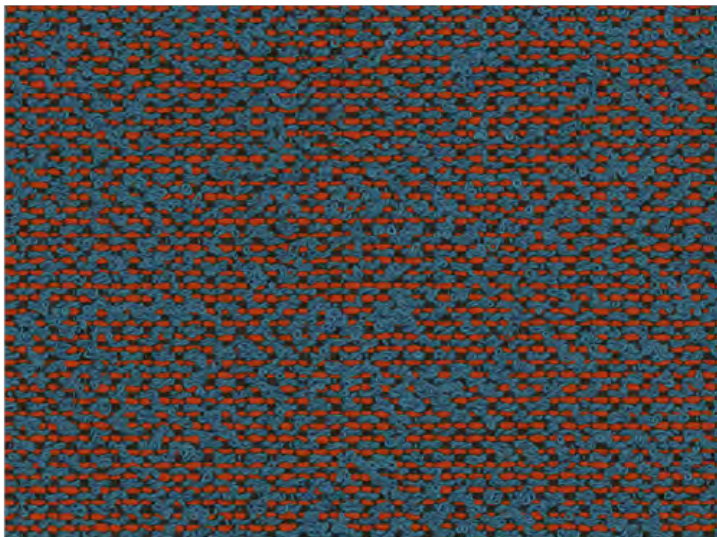
Render



Diad



Radiance



Harlequin

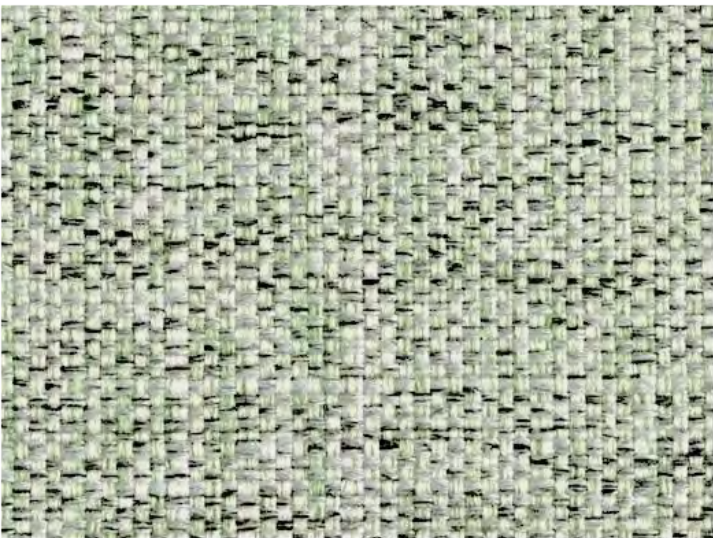
AUCKLAND  
By Vescom



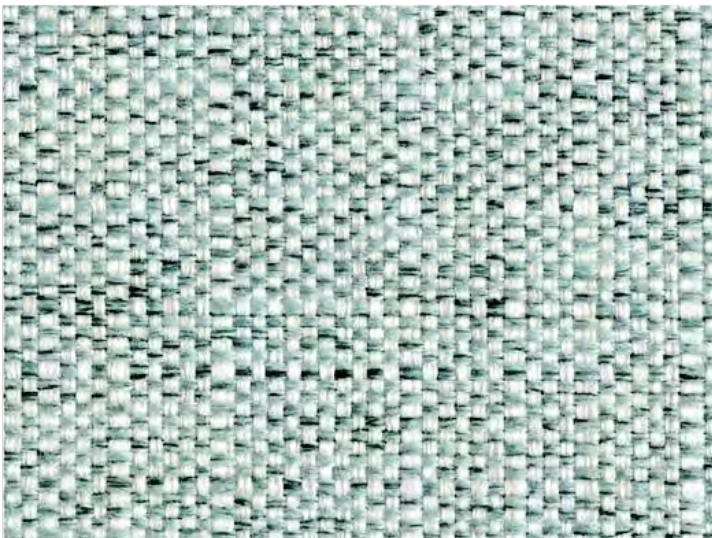
FABRIC TYPE	COMPOSITION	DURABILITY	LIGHTFASTNESS	PILLING	FIRE TESTS
Bouclé	76% Recycled Polyester FR 24% Polyester FR	60,000 Martindale	6	4	EN 1021/1-2, Pass; BS 5852, Crib 5; NF P 92/503-507 or NF D 60-013, M1 DIN 4102, B1 Cal TB 117-2013, section 1, Pass; IMO 2010 FTP part 8, Pass; NFPA 260, Class 1

Caution: the displayed colours, due to technical matters, are approximate and may differ from the original

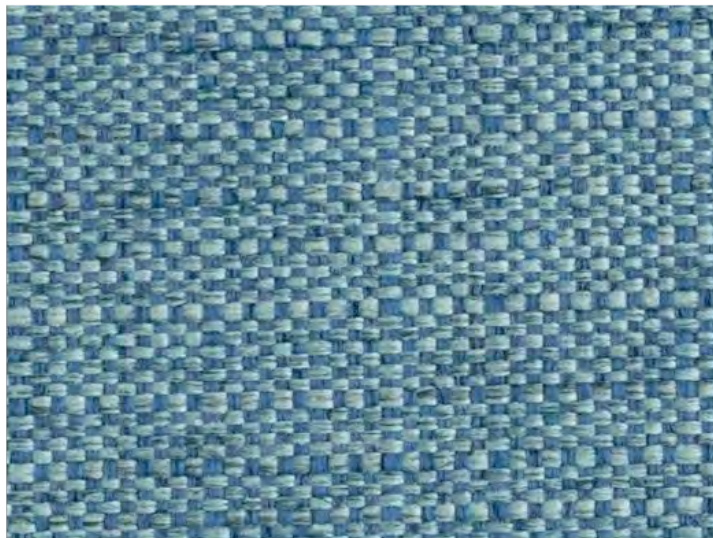




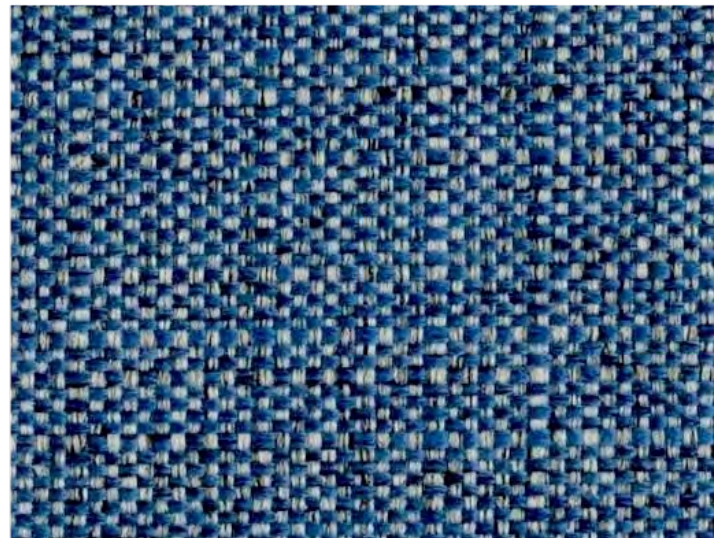
Water Green



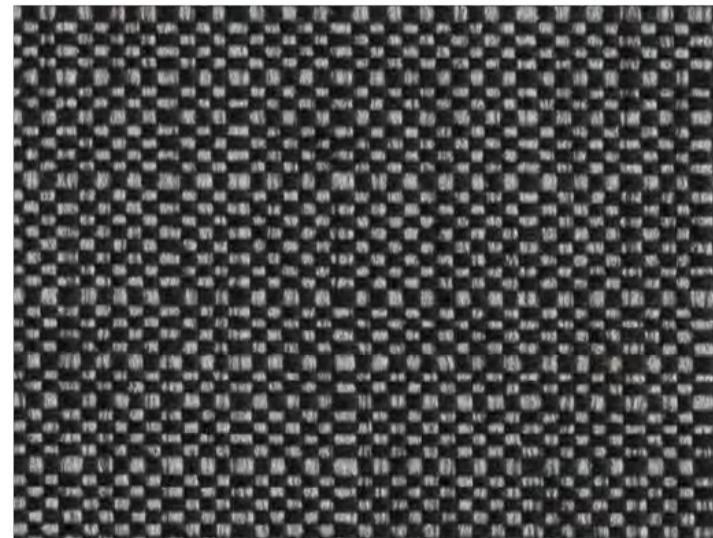
Safura



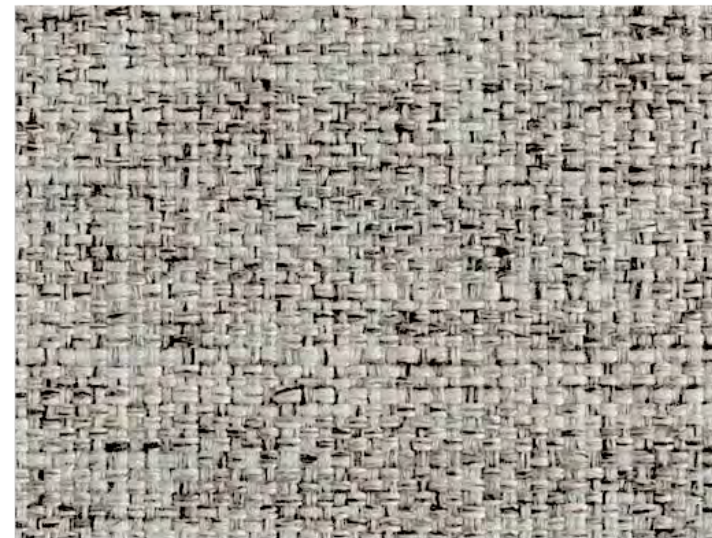
Sky



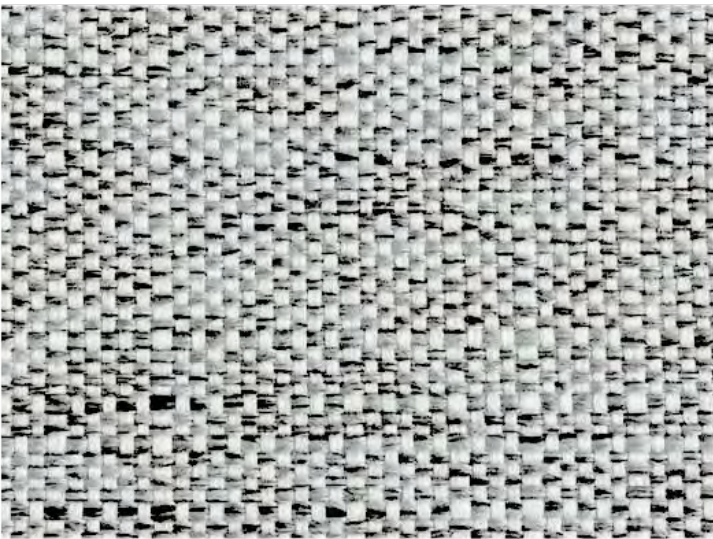
Blue



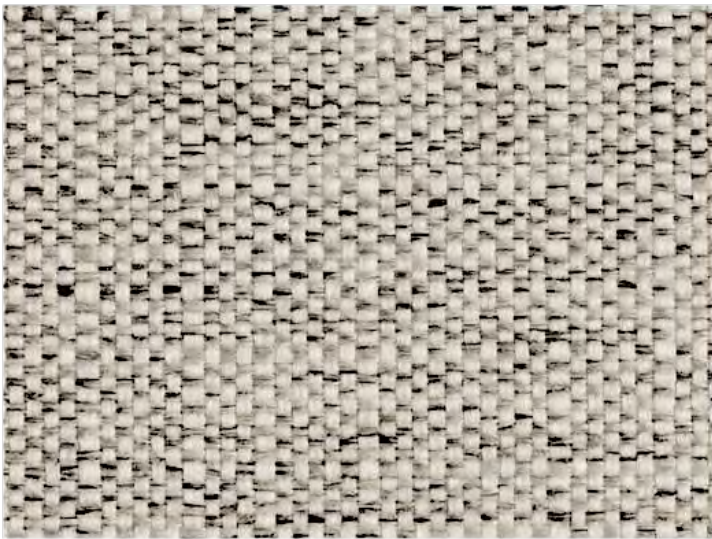
Black



Ash



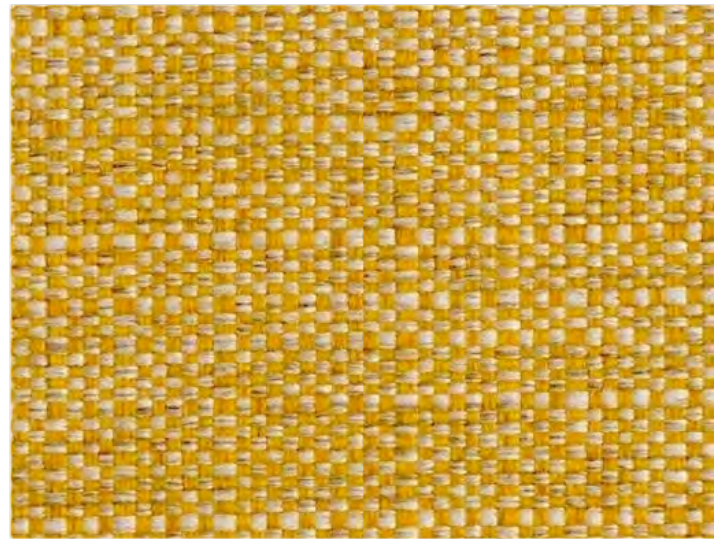
Light Grey



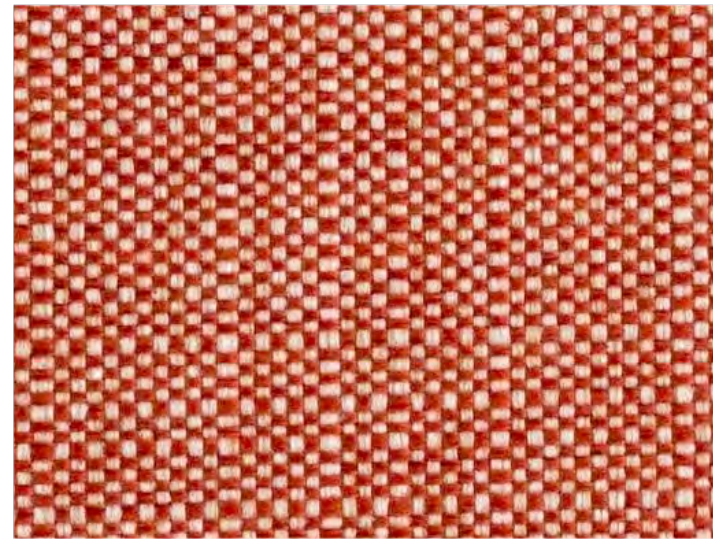
Silver



White



Yellow



Red



Salmon



Sand



Beige



Mouse



Taupe



Terra



Chocolate

BABEL

FABRIC TYPE	COMPOSITION	DURABILITY	LIGHTFASTNESS	PILLING	FEATURES	FIRE TESTS
Flat Weave	100% Polyester	90,000 Martindale	4	3 - 5	Easy-to-Clean Breathable Pet Friendly	BS 5852 part 1 - Cigarette Test PASS EN 1021-1 - Cigarette Test PASS CA Tech. Bull. 117:2013 / NFPA 260 - Cigarette Test PASS



BLUEWORLD<sup>®</sup>  
HUMAN CARE TECHNOLOGY



STANDARD  
100  
9342CIT  
CITEVE

Caution: the displayed colours, due to technical matters, are approximate and may differ from the original





BALTIC

FABRIC TYPE	COMPOSITION	DURABILITY	LIGHTFASTNESS	PILLING	FEATURES	FIRE TESTS
Chenille	100% Polyester	35,000 Martindale	5	4	Anti-Stain	BS 5852 part 1 - Cigarette Test PASS EN 1021-1 - Cigarette Test PASS CA Tech. Bull. 117:2013 / NFPA 260 - Cigarette Test PASS



Caution: the displayed colours, due to technical matters, are approximate and may differ from the original





White



Sand



Pale Rose



Paprika



Cinnamon



Aqua



Pine



Hunter



Dark Forest



Fossil



Pebble



Dove



Stone



Shadow



Charcoal

# BOUCLÉ

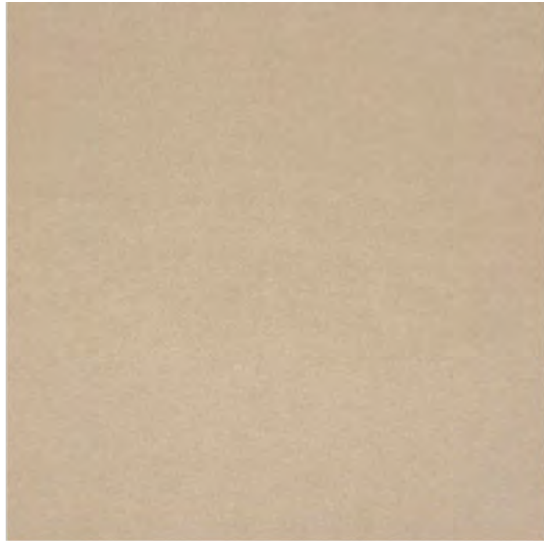
FABRIC TYPE	COMPOSITION	DURABILITY	LIGHTFASTNESS	PILLING
Bouclé	100% Polyester	80,000 Martindale	3	4

Caution: the displayed colours, due to technical matters, are approximate and may differ from the original

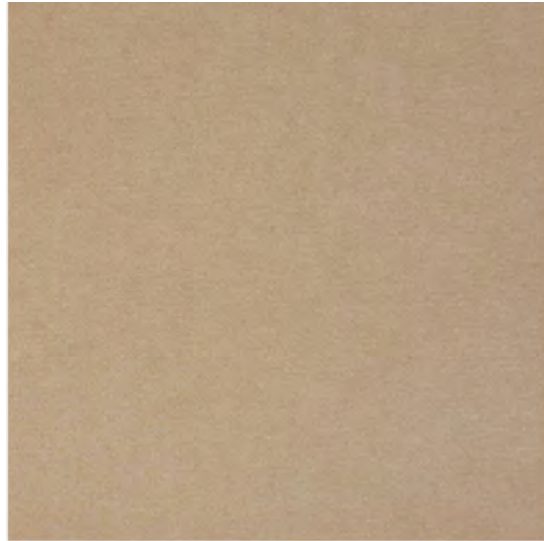




Pearl



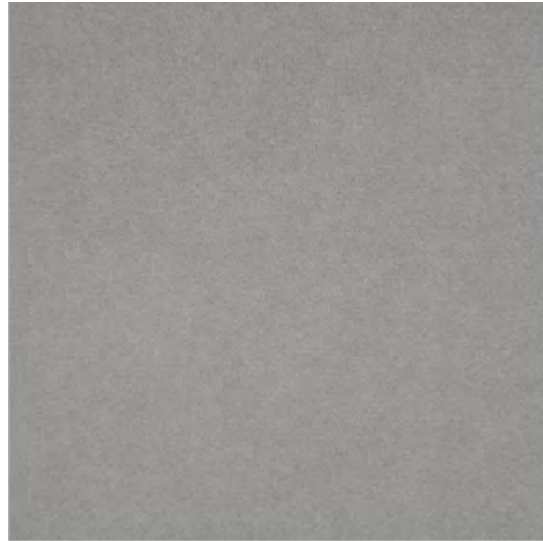
Beige



Lion



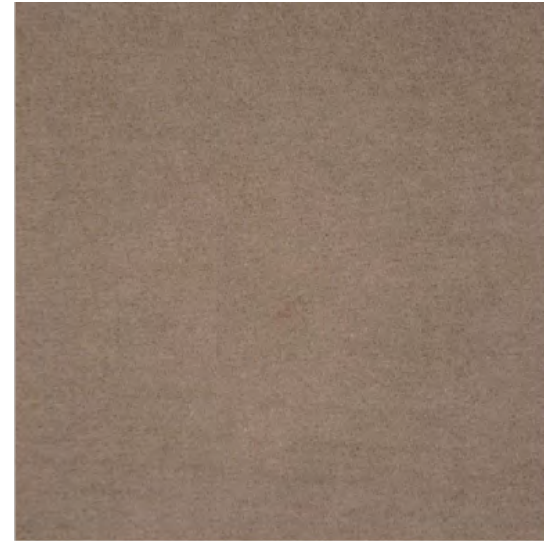
Fog



Stone



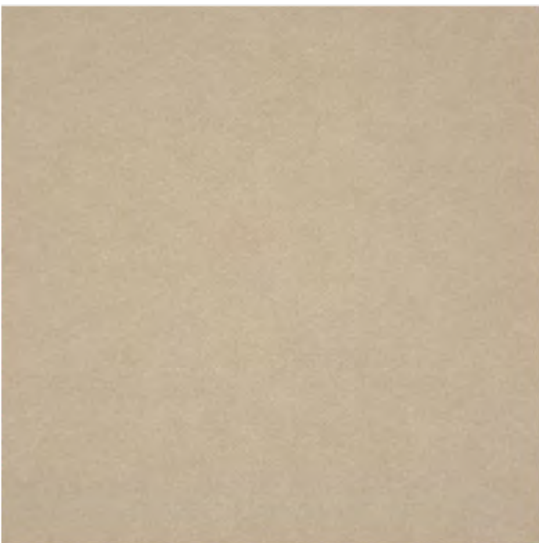
Elephant



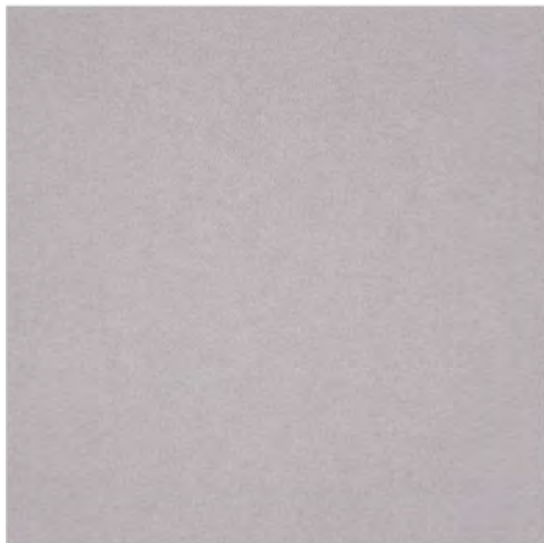
Taupe



Ebony



Sand



Light Violet



Pink



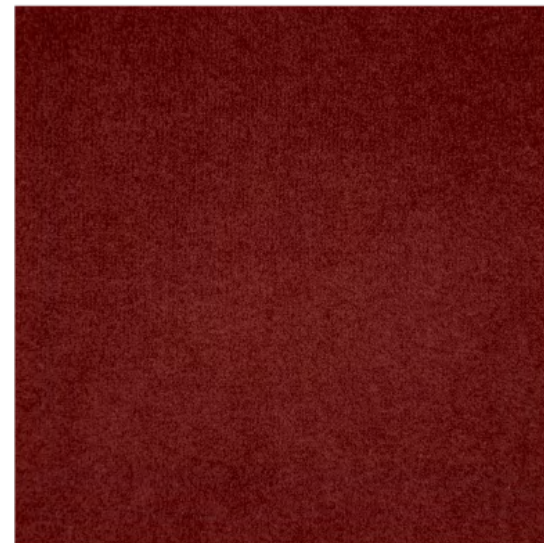
Salmon



Cuoio



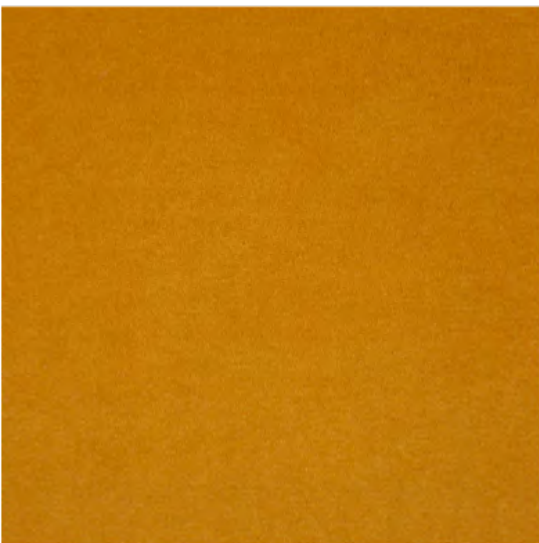
Terracotta



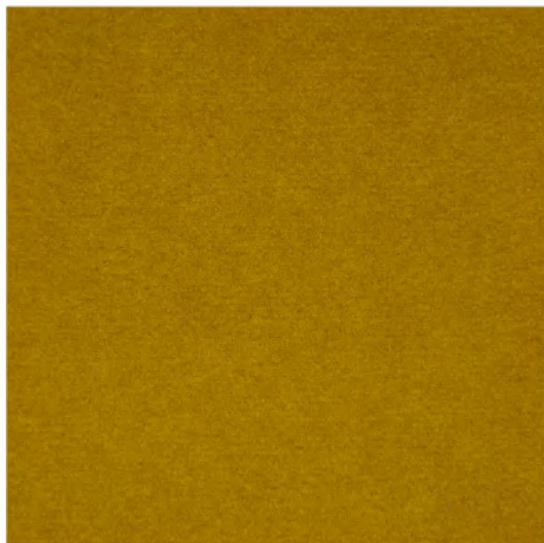
Marsala



Bordeaux



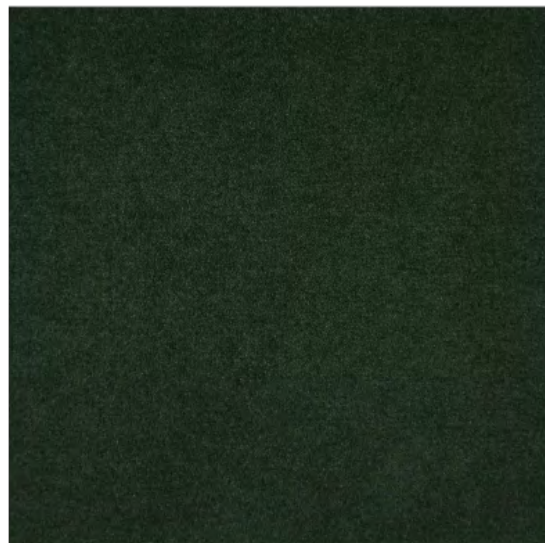
Mostaza



Olive



Forest



Deep Green



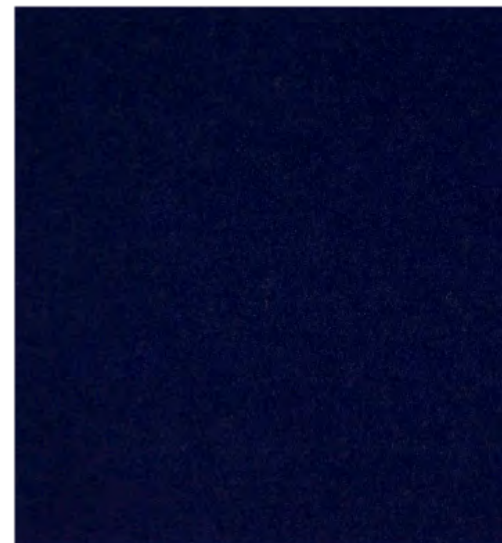
Safira



Dark Blue



Ocean



Deep Blue

# CASINO

FABRIC TYPE	COMPOSITION	DURABILITY	LIGHTFASTNESS	PILLING	FEATURES	FIRE TESTS
Velvet - Matte Finish	100% Polyester	100,000 Martindale	4 - 5	4 - 5	Anti-Stain Pet Friendly	BS 5852 part 1 - Cigarette Test PASS EN 1021-1 - Cigarette Test PASS CA Tech. Bull. 117:2013 / NFPA 260 - Cigarette Test PASS



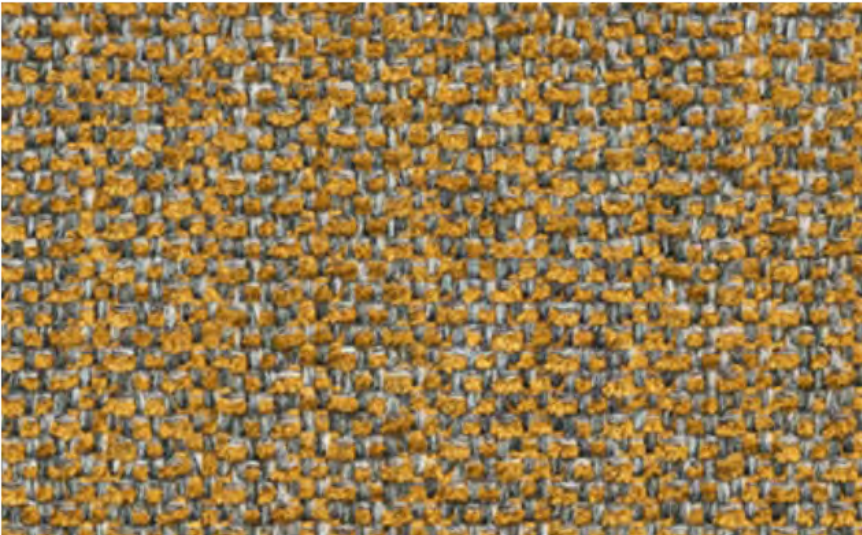
BLUEWORLD<sup>®</sup>  
HUMAN CARE TECHNOLOGY



STANDARD  
100  
9342CIT  
CITEVE

Caution: the displayed colours, due to technical matters, are approximate and may differ from the original

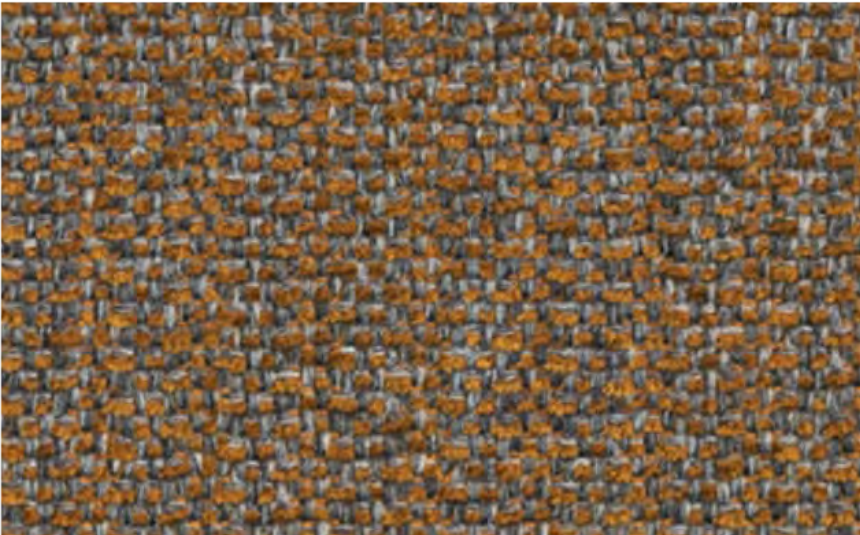




Fortress



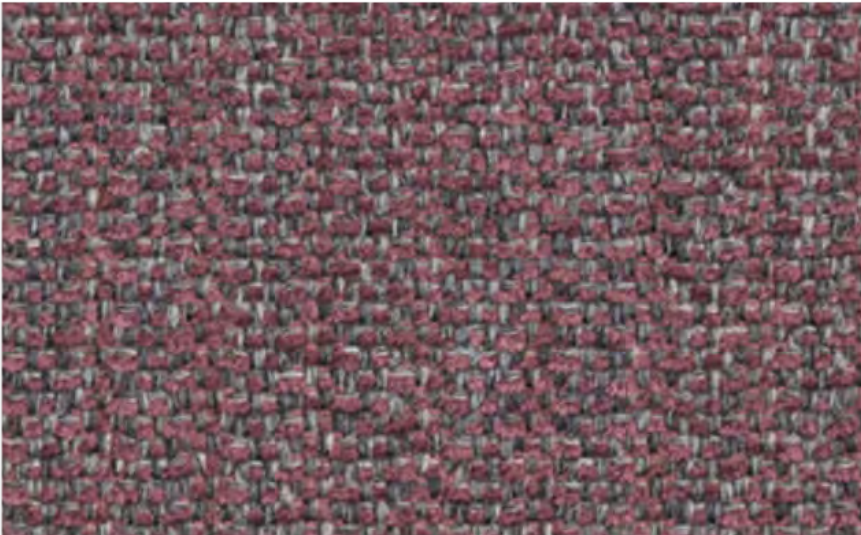
Beacon



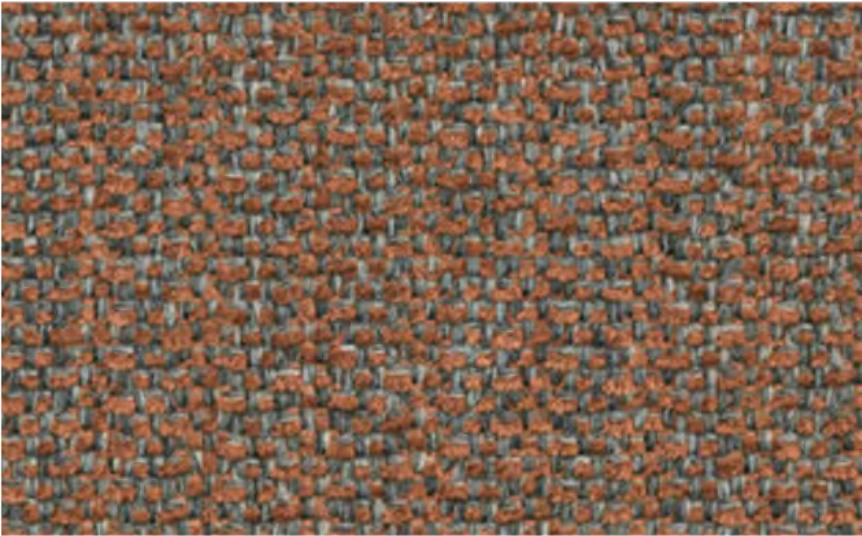
Redoubt



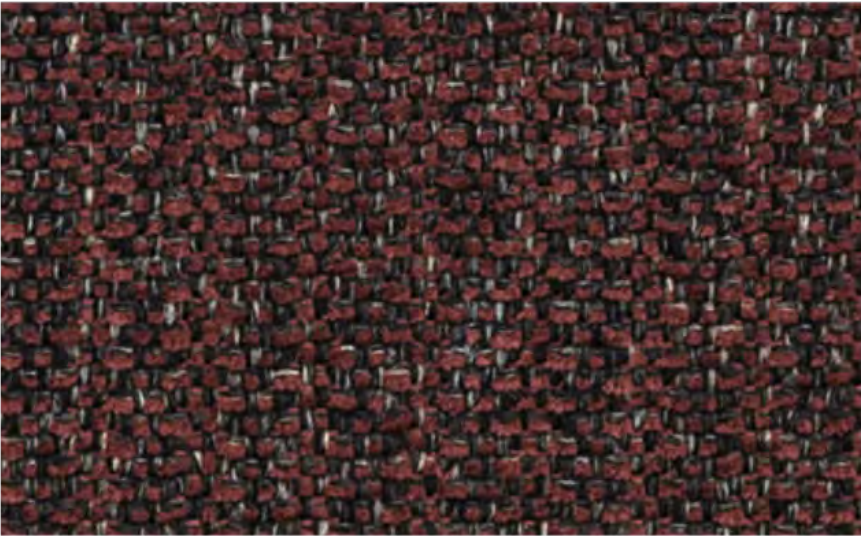
Drawbridge



Augusta



Hideaway



Hamilton



Resistance



Stillwater



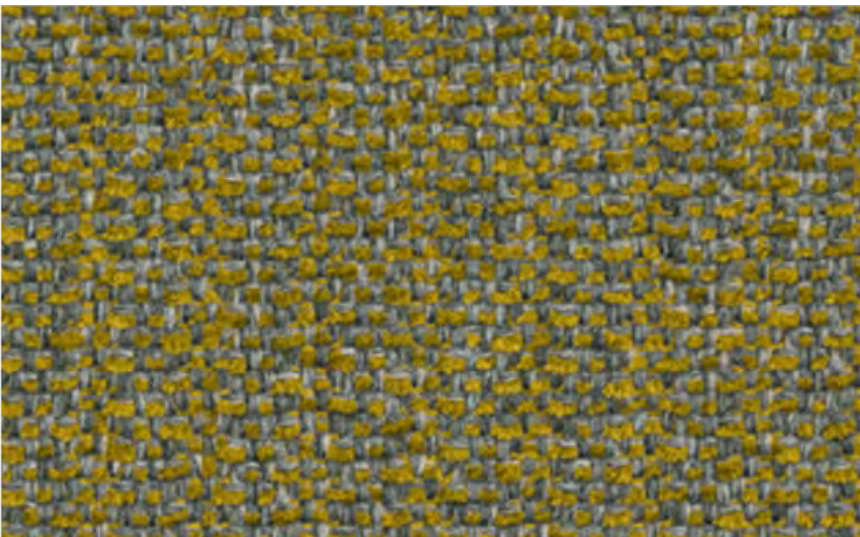
Confine



Craven



Ralstone



Bingham



Abide

# DIKSON

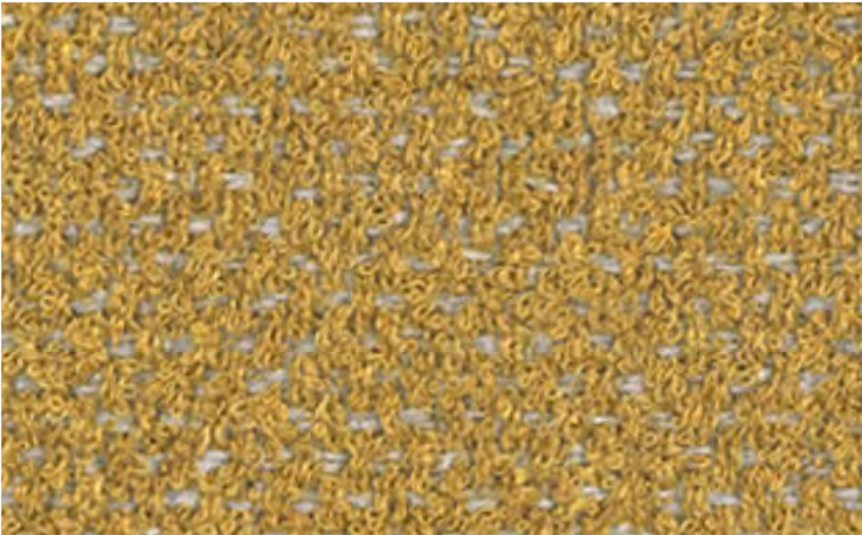
By Vescom



Caution: the displayed colours, due to technical matters, are approximate and may differ from the original

FABRIC TYPE	COMPOSITION	DURABILITY	LIGHTFASTNESS	PILLING	FIRE TESTS
Chenille	100% Polyester	100,000 Martindale	6	4 - 5	EN 1021/1-2, Pass; BS 5852, Crib 5; NF P 92/503-507 or NF D 60-013, M1 DIN 4102, B1 Cal TB 117-2013, section 1, Pass; IMO 2010 FTP part 8, Pass; NFPA 260, Class 1

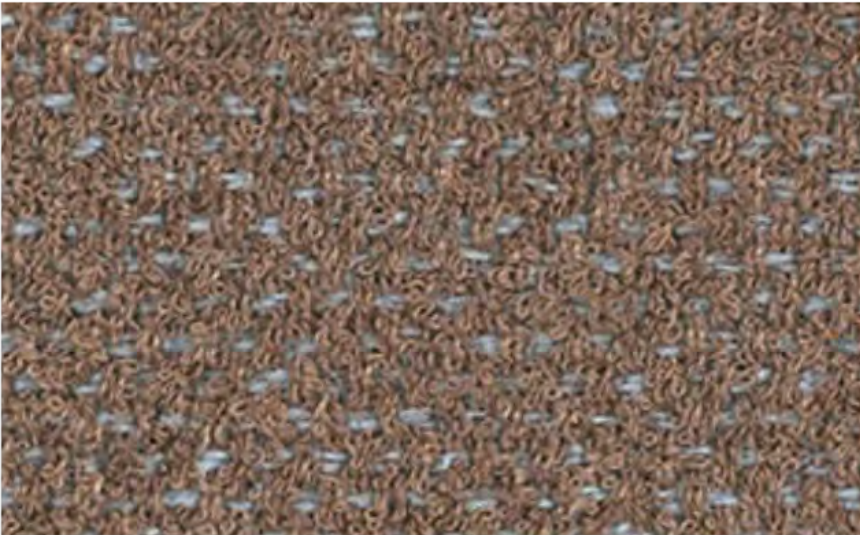




Capones



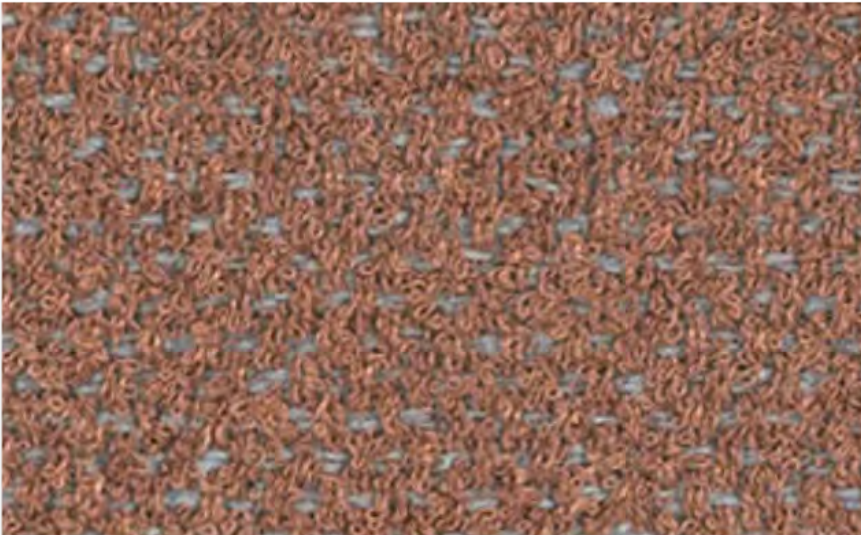
Palenque



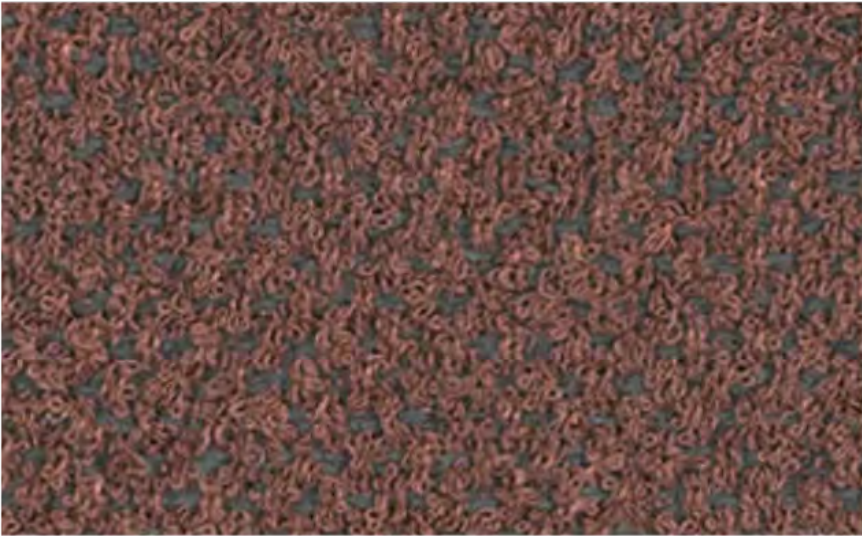
Gorkha



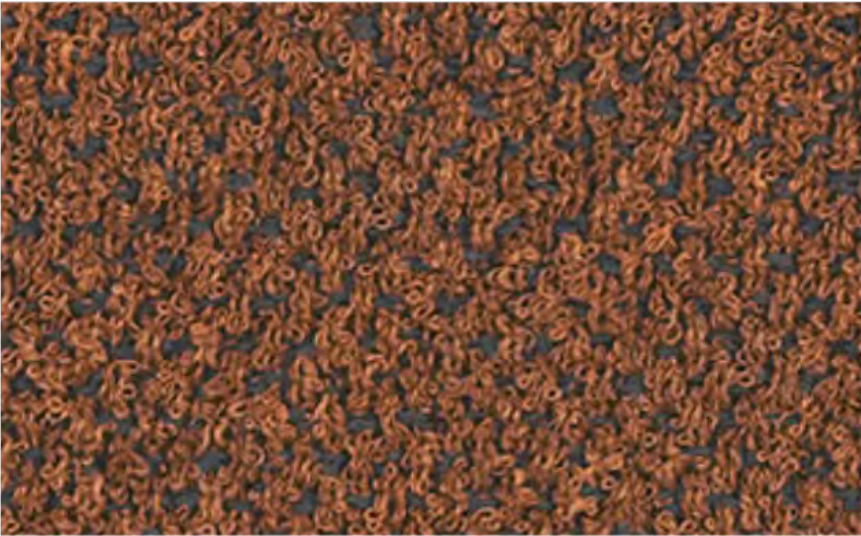
Petra



Meteora



Zion



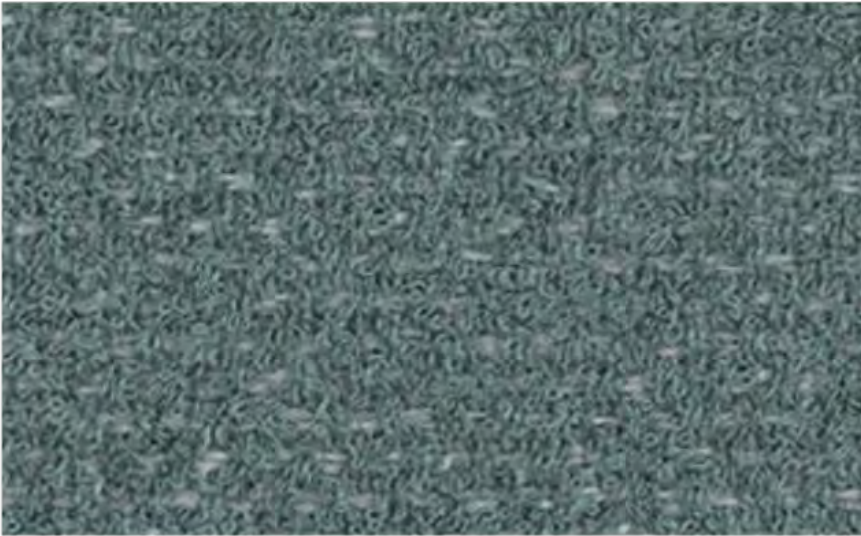
Marrakech



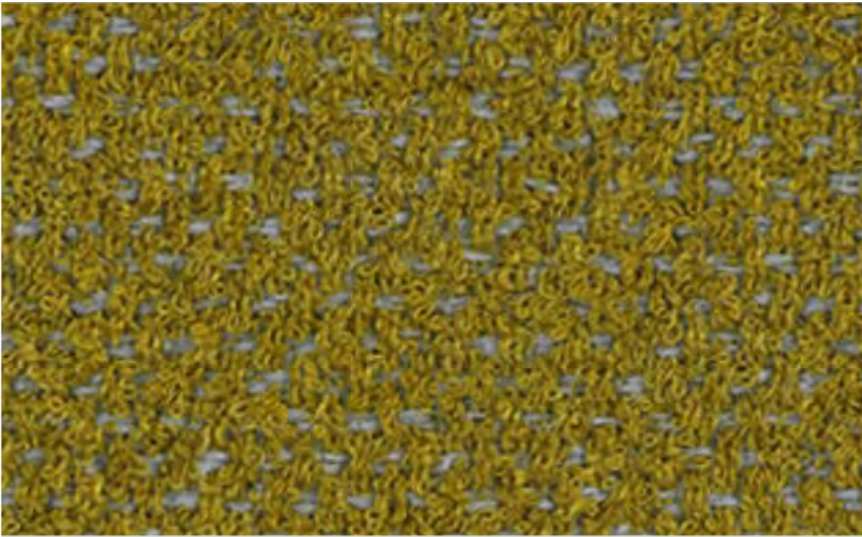
Dolomites



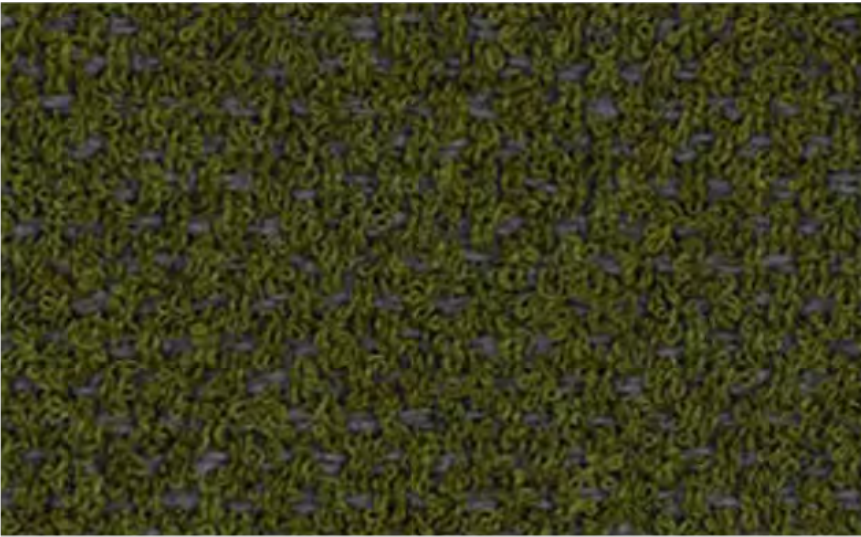
Halong



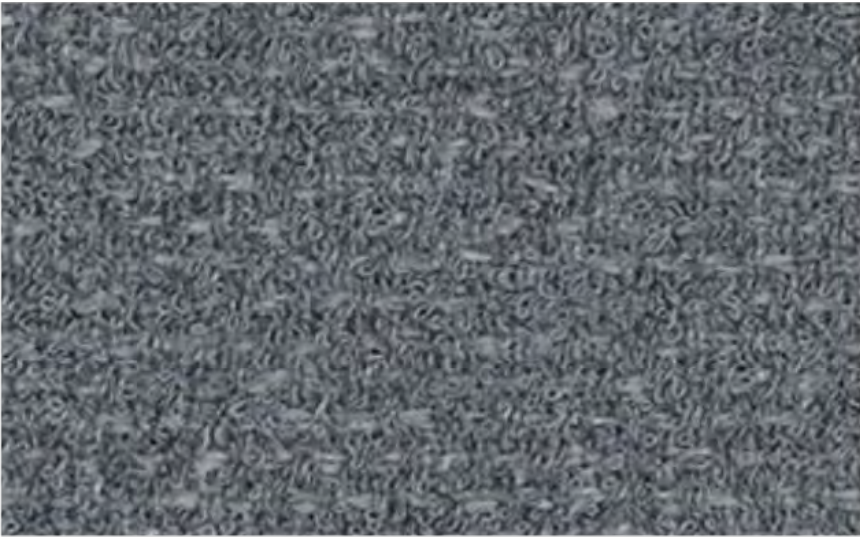
Molokai



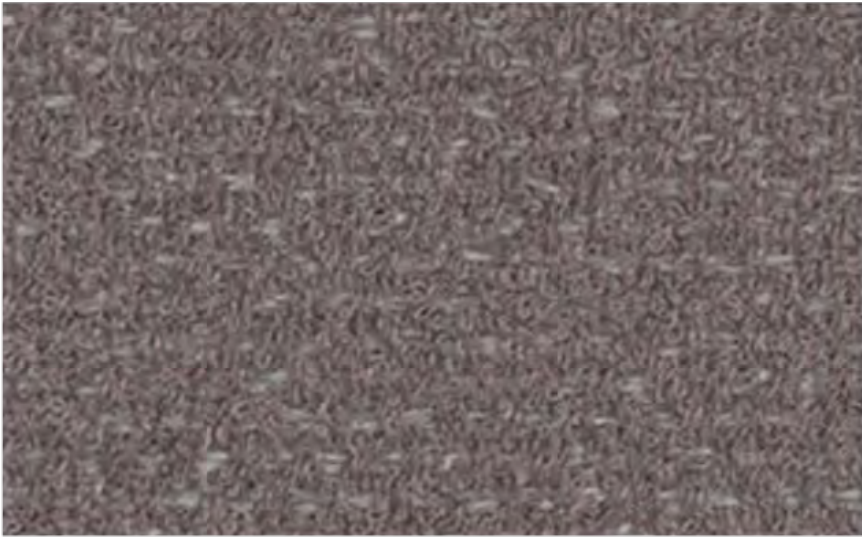
Yosemite



Patagonia



Rainer



Calabria



Malham

# FOSTER

By Vescom



Caution: the displayed colours, due to technical matters, are approximate and may differ from the original

FABRIC TYPE	COMPOSITION	DURABILITY	LIGHTFASTNESS	PILLING	FIRE TESTS
Bouclé	97% Recycled Polyester FR 3% Polyester FR	60,000 Martindale	6	4	EN 1021/1-2, Pass; BS 5852, Crib 5; NF P 92/503-507 or NF D 60-013, M1 DIN 4102, B1 Cal TB 117-2013, section 1, Pass; IMO 2010 FTP part 8, Pass; NFPA 260, Class 1





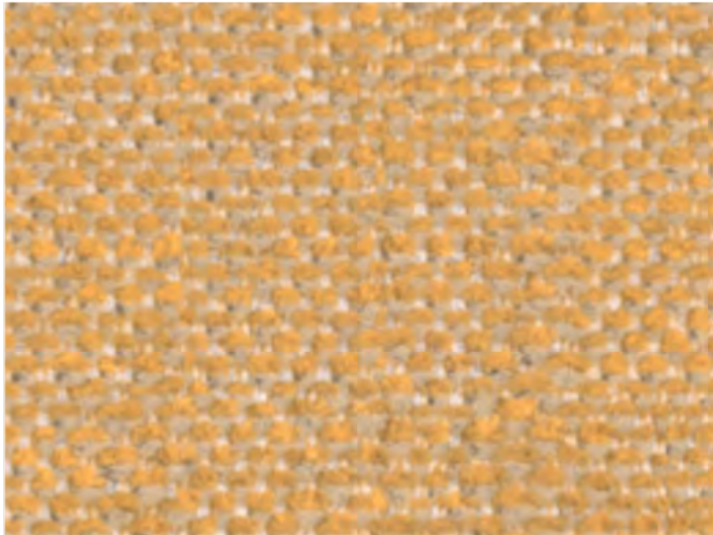
Vit



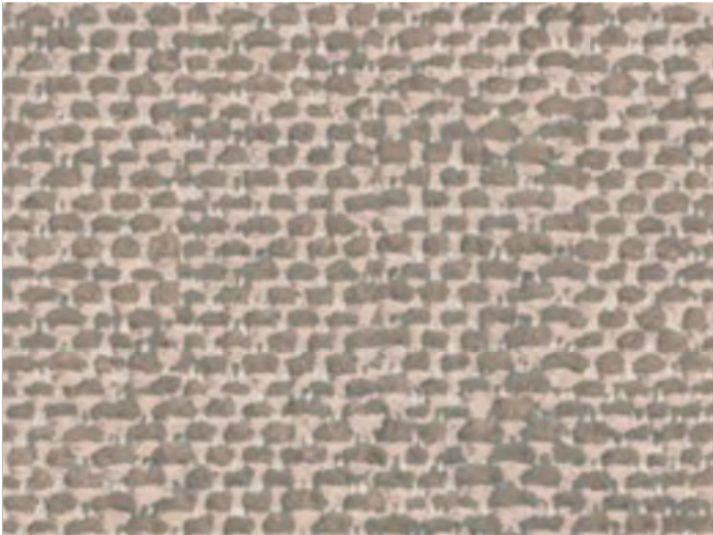
Clan



Shetland



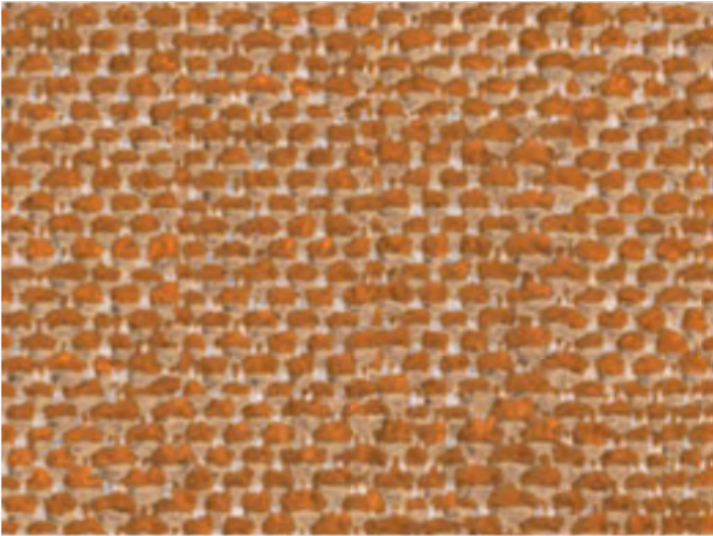
Lora



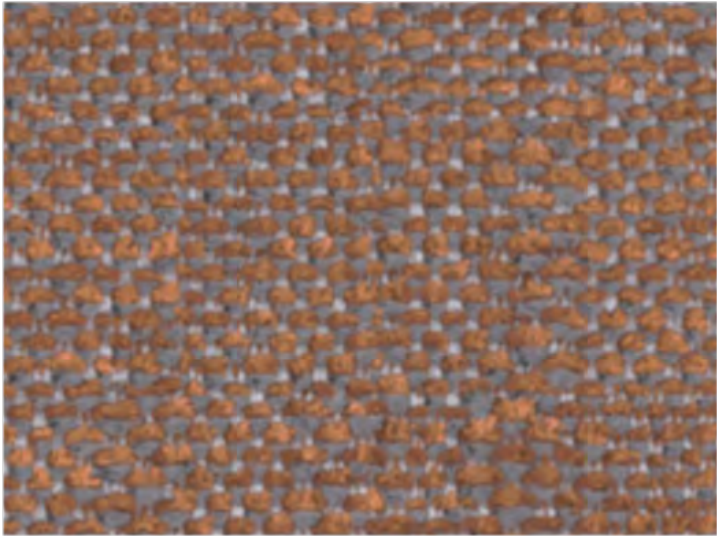
Hillswick



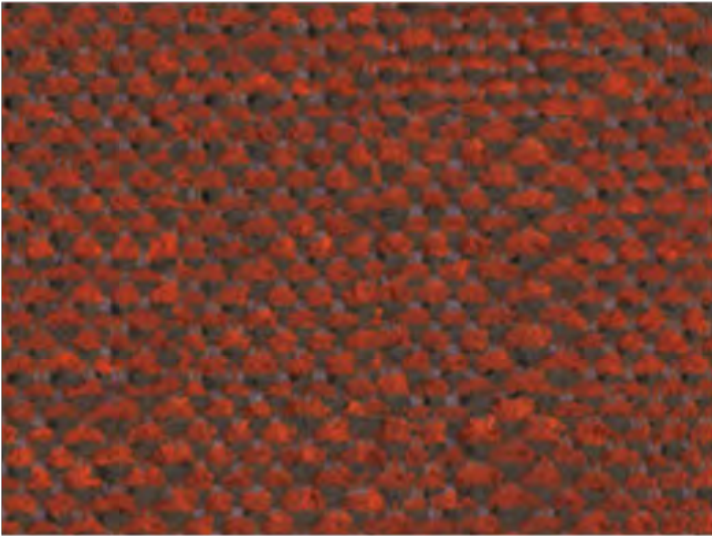
Dolphin



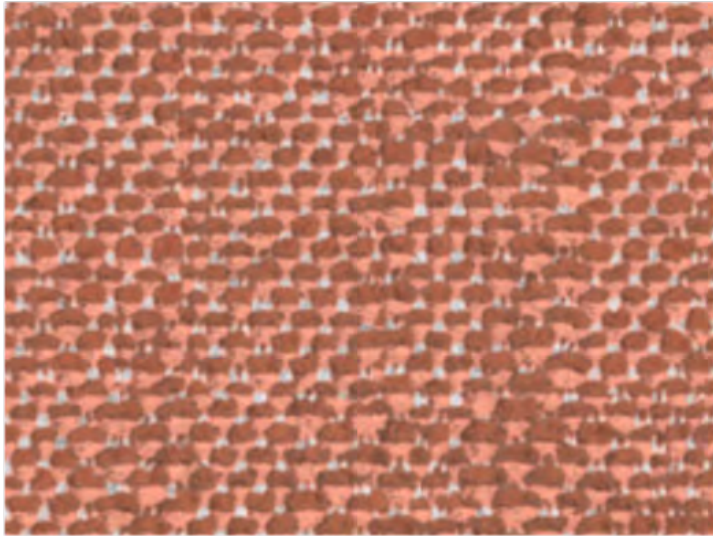
Lomond



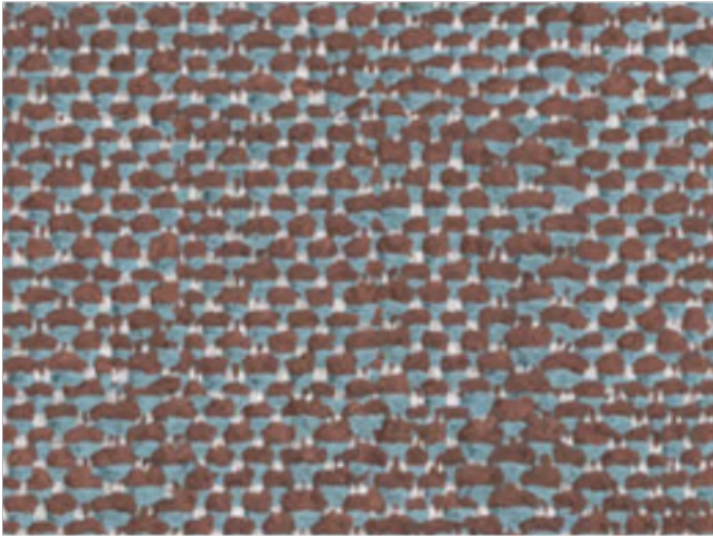
Austen



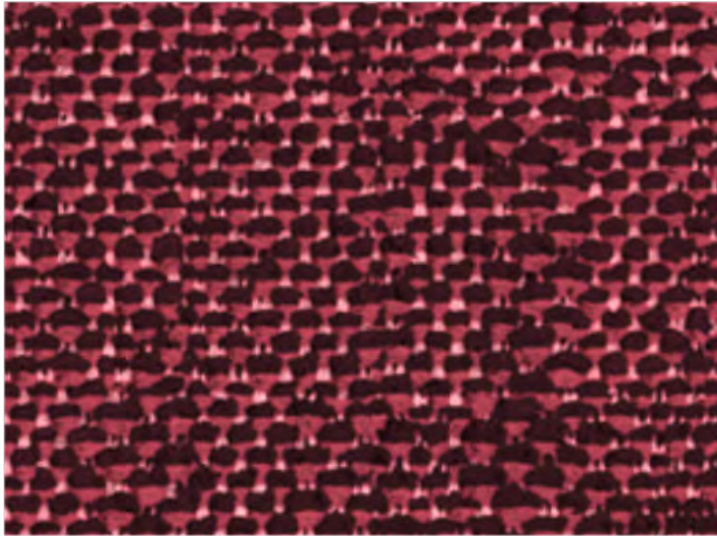
Pitlochry



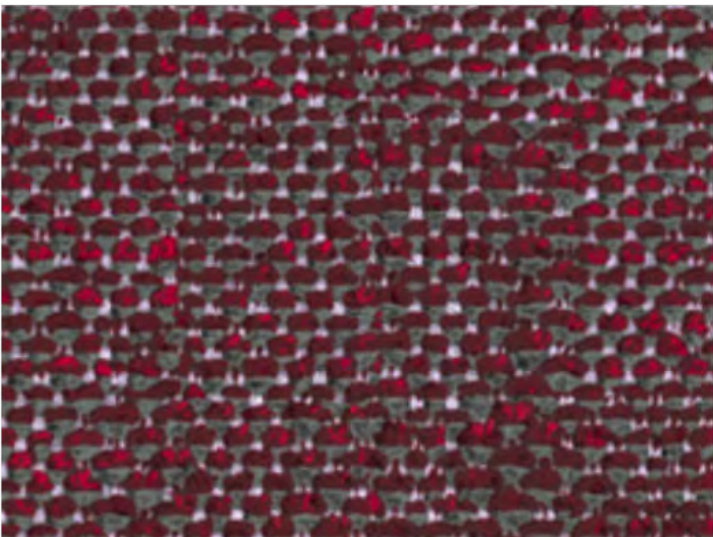
Maree



Denny



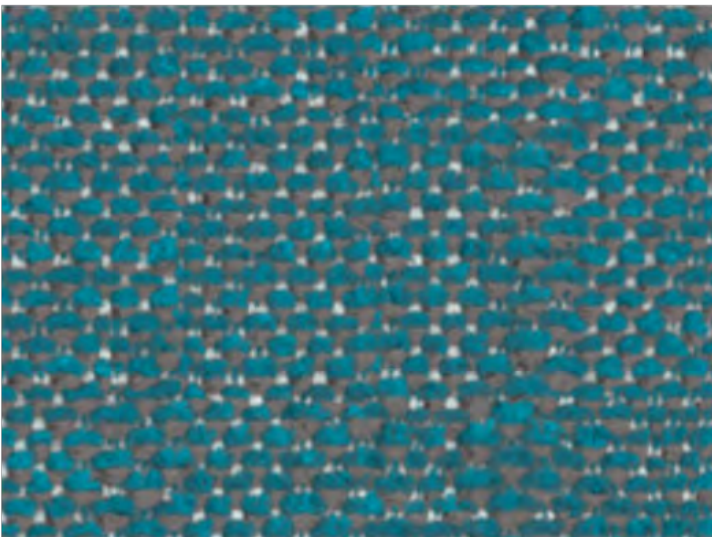
Tummel



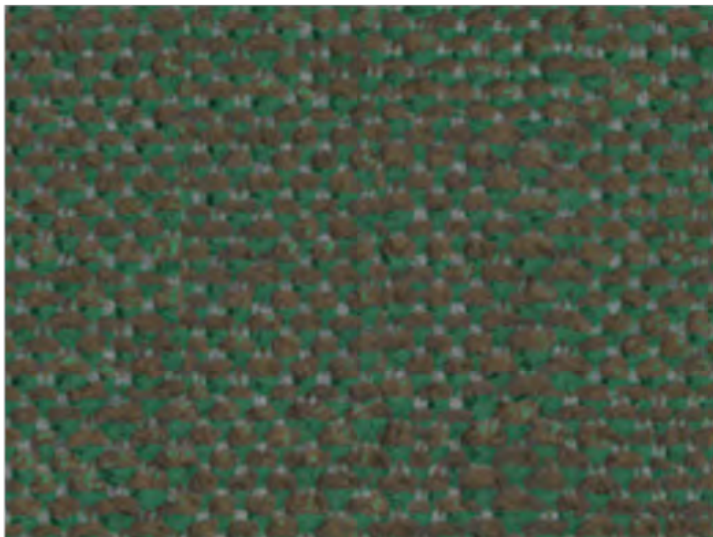
Lossie



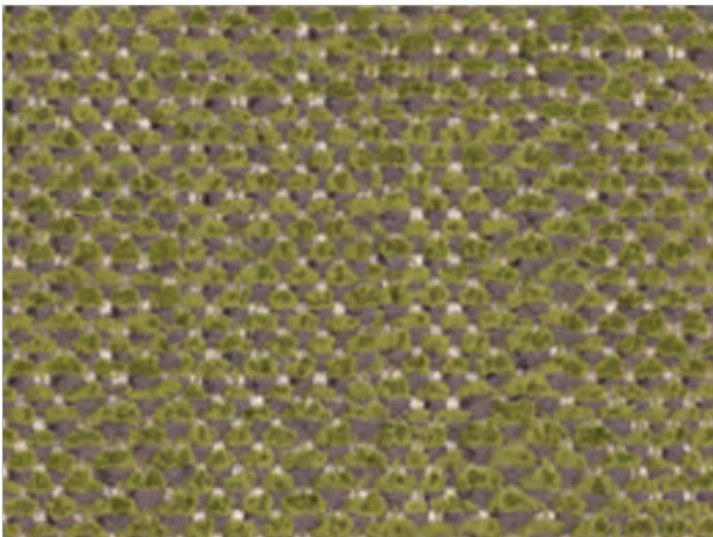
Adriatic



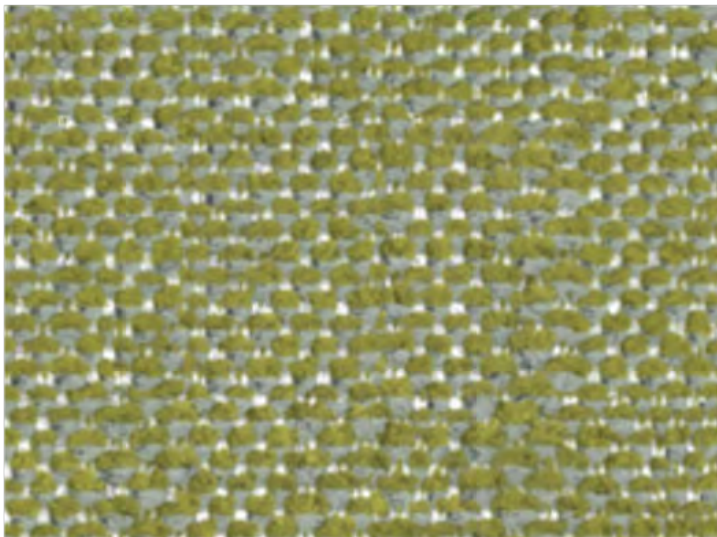
Inverness



Carron



Staffa



Fair Isle

# FUGA

By Vescom



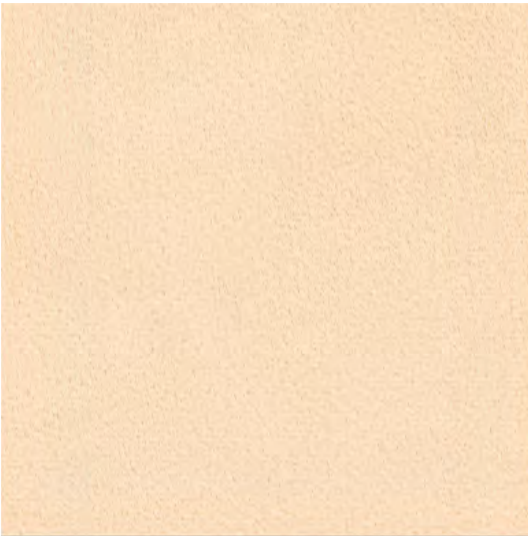
Caution: the displayed colours, due to technical matters, are approximate and may differ from the original

FABRIC TYPE	COMPOSITION	DURABILITY	LIGHTFASTNESS	PILLING	FIRE TESTS
Chenille	79% Recycled Polyester FR 21% Polyester FR	70,000 Martindale	6 - 7	4 - 5	EN 1021/1-2, Pass; BS 5852, Crib 5; NF P 92/503-507 or NF D 60-013, M1 DIN 4102, B1 Cal TB 117-2013, section 1, Pass; IMO 2010 FTP part 8, Pass; NFPA 260, Class 1

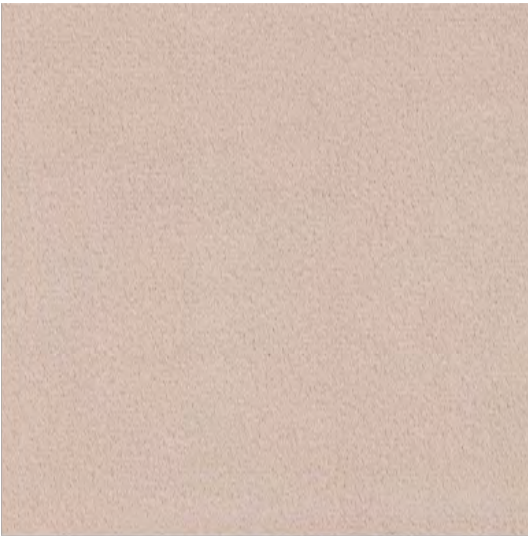




Milk



Cream



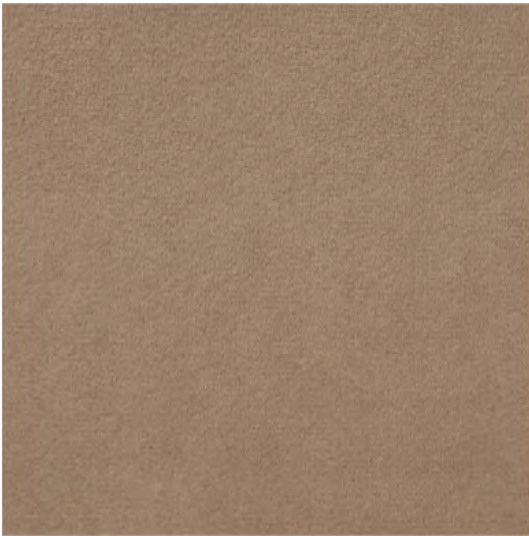
Warm Grey



Sand



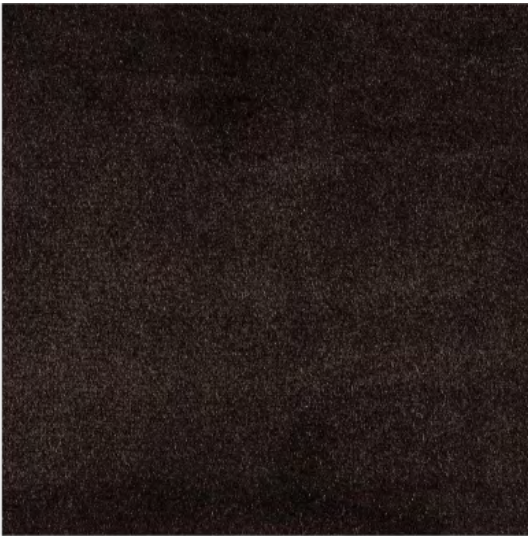
Camel



Taupe



Mink



Ebony



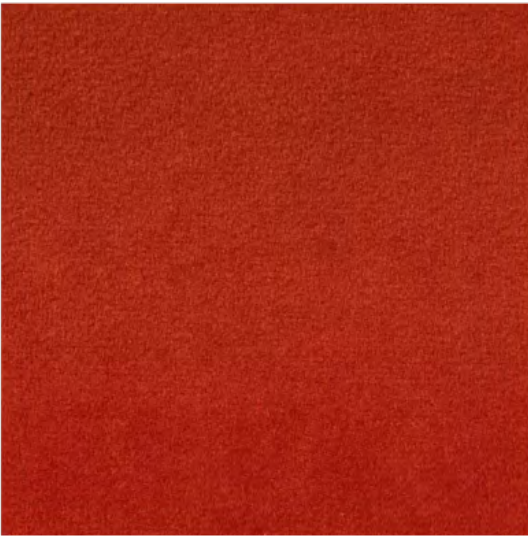
Mostaza



Masai



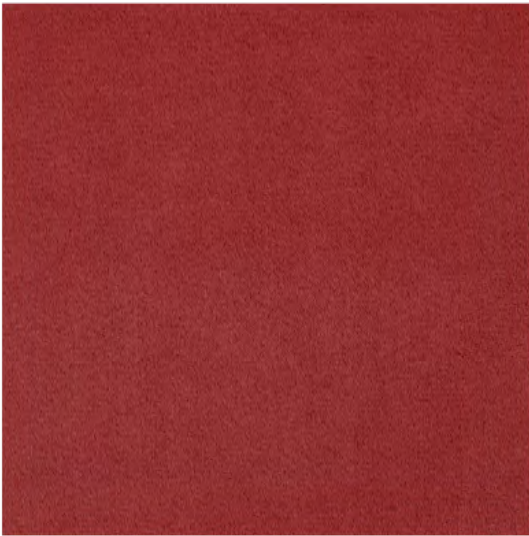
Copper



Rust



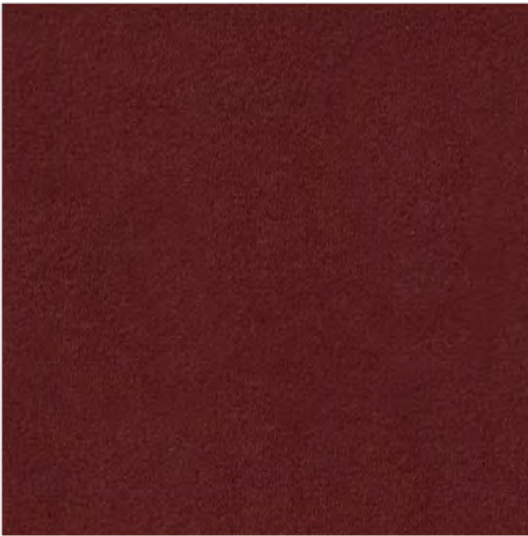
Mauve



Marsala



Red



Bourdeaux



Cement



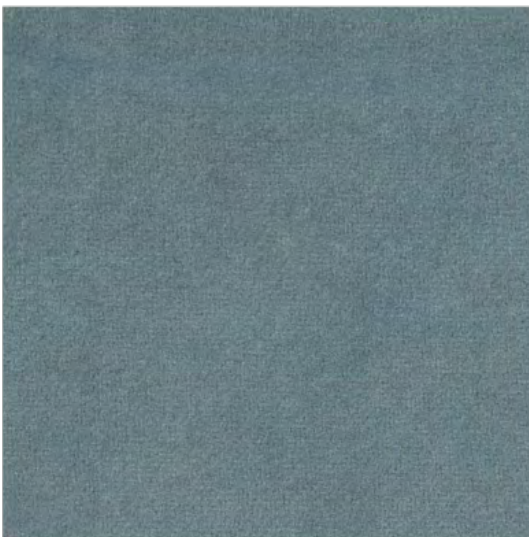
Olive



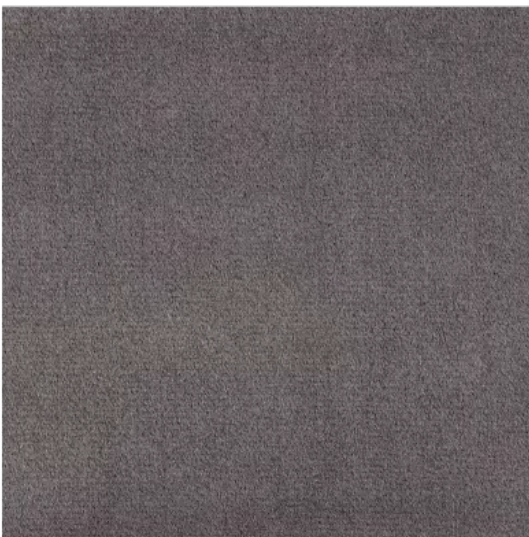
Forest



Emerald



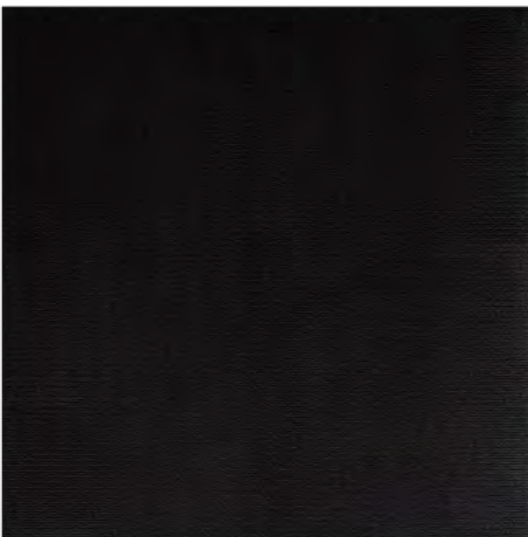
Steel Blue



Mid Grey



Navy



Black

# HARALD

FABRIC TYPE	COMPOSITION	DURABILITY	LIGHTFASTNESS	PILLING	FEATURES	FIRE TESTS
Velvet - Soft Sheen	100% Cotton	50,000 Martindale	3	5	Liquid Repellent	BS 5852 part 1 - Cigarette Test PASS EN 1021-1 - Cigarette Test PASS CA Tech. Bull. 117:2013 / NFPA 260 - Cigarette Test PASS

Caution: the displayed colours, due to technical matters, are approximate and may differ from the original





LONDON

FABRIC TYPE	COMPOSITION	DURABILITY	LIGHTFASTNESS	PILLING	FIRE TESTS
Flat Weave	100% Polyester	80,000 Martindale	5	4	BS 5852 part 1 - Cigarette Test PASS EN 1021-1 - Cigarette Test PASS CA Tech. Bull. 117:2013 / NFPA 260 - Cigarette Test PASS

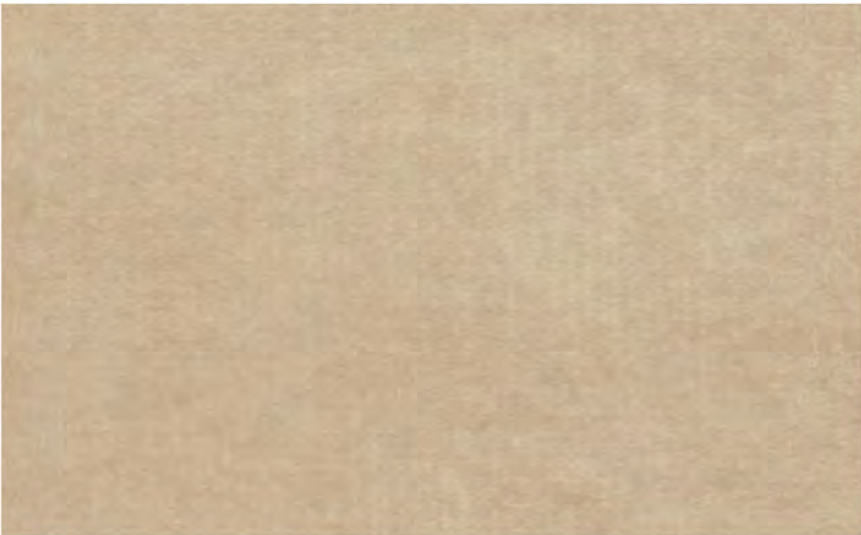


Caution: the displayed colours, due to technical matters, are approximate and may differ from the original

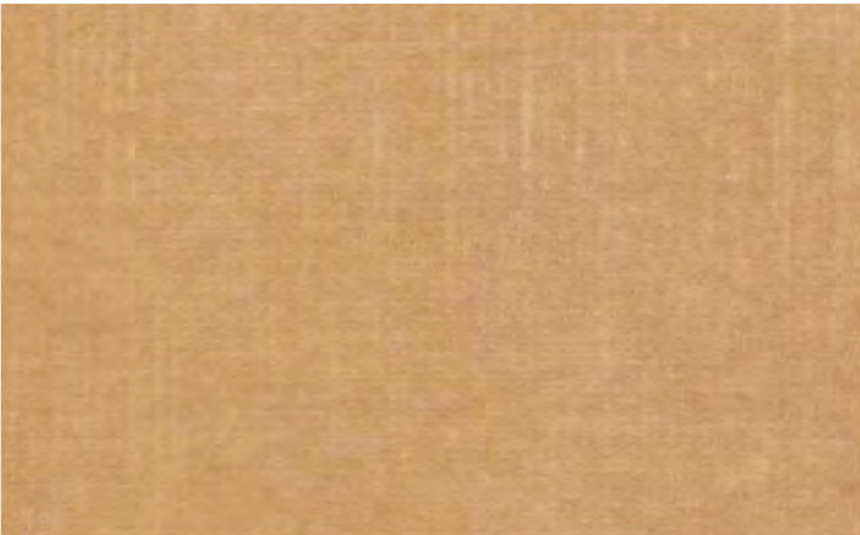




Pearl



Sand



Toffee



Truffle



Coral



Brick



Gold



Cuoio



Terra



Chocolate



Moss



Emerald



Forest



Ash



Black

# MACAU

FABRIC TYPE	COMPOSITION	DURABILITY	LIGHTFASTNESS	PILLING	FEATURES	FIRE TESTS
Velvet - Soft Sheen	100% Polyester	90,000 Martindale	5	4 - 5	Anti-Stain Pet Friendly	BS 5852 part 1 - Cigarette Test PASS EN 1021-1 - Cigarette Test PASS CA Tech. Bull. 117:2013 / NFPA 260 - Cigarette Test PASS



BLUEWORLD<sup>®</sup>  
HUMAN CARE TECHNOLOGY



STANDARD  
100  
9342CIT  
CITEVE

Caution: the displayed colours, due to technical matters, are approximate and may differ from the original





White



Beige



Taupe



Lilac



Cement



Sand



Ash



Dark Brown



Nude



Yellow



Cognac



Terra



Trufa



Red



Elephant



Mouse



Water Green



Pistachio



Bamboo



Forest



Sky



Turquoise



Ocean



Black

# MADEIRA

FABRIC TYPE	COMPOSITION	DURABILITY	LIGHTFASTNESS	PILLING	FIRE TESTS
Textured Flat Weave	100% Polyester	50,000 Martindale	4	5	BS 5852 part 1 - Cigarette Test PASS EN 1021-1 - Cigarette Test PASS CA Tech. Bull. 117:2013 / NFPA 260 - Cigarette Test PASS



BLUEWORLD<sup>®</sup>  
HUMAN CARE TECHNOLOGY



STANDARD  
100  
9342CIT  
CITEVE

Caution: the displayed colours, due to technical matters, are approximate and may differ from the original





Solace



True



Harmony



Cuddle



Retreat



Dainty



Affection



Bliss



Courtesy



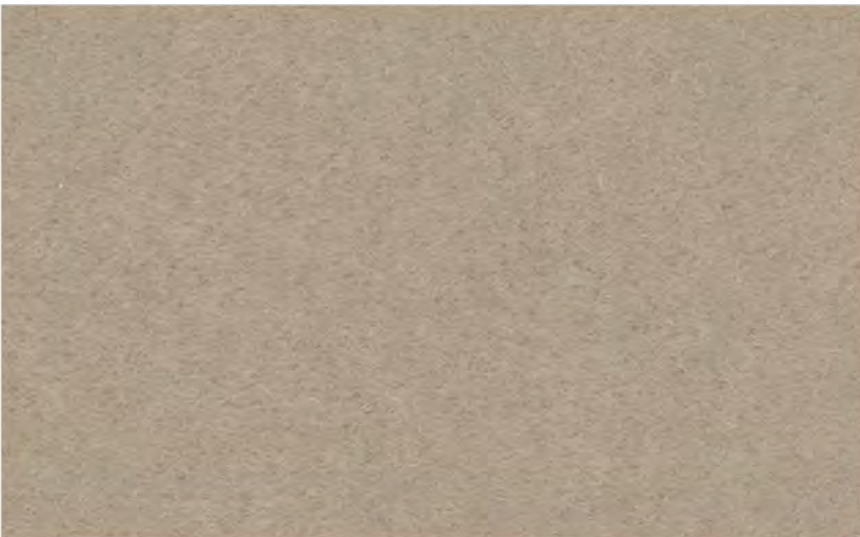
Kind



Pillow



Daydream



Haven



Sympathy



Tender

MONTE

By Vescom



USCG –  
EU MRA  
0038



STANDARD  
100  
1207035  
Centexbel



Caution: the displayed colours, due to technical matters, are approximate and may differ from the original

FABRIC TYPE	COMPOSITION	DURABILITY	LIGHTFASTNESS	PILLING	FIRE TESTS
Velvet	100% Mohair Extreme High Pile	100,000 double rubs Wyzenbeek	5	4 - 5	EN 1021/1-2, Pass; BS 5852, Crib 5; NF P 92/503-507 or NF D 60-013, M2; DIN 4102, B2; Cal TB 117-2013, section 1, Pass; IMO 2010 FTP part 8, Pass; NFPA 260, Class 1





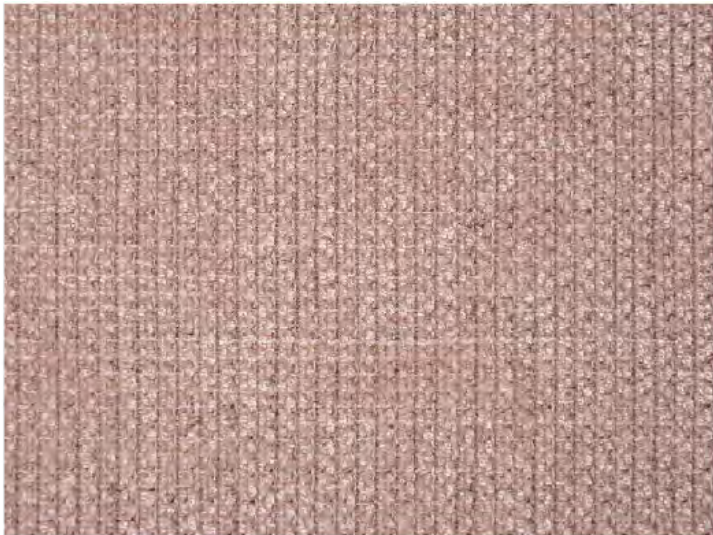
Pearl



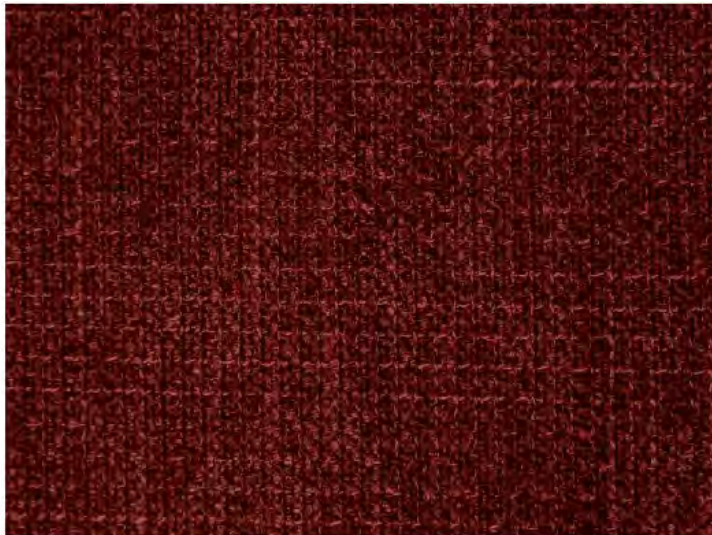
Ivory



Toffee



Pink



Marsala



Deep Purple



Mostaza



Mud



Truffle



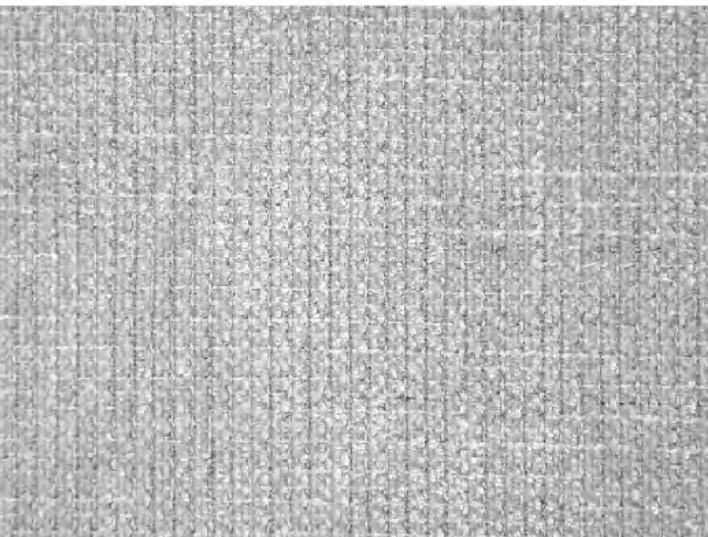
Green



Forest



Chocolate



Cement



Fog



Ocean



Taupe



Anthracite



Black

TRIBU

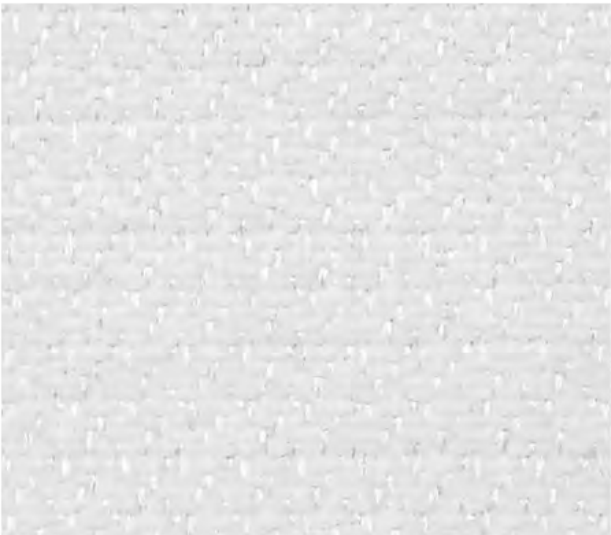
FABRIC TYPE	COMPOSITION	DURABILITY	LIGHTFASTNESS	PILLING	FEATURES	FIRE TESTS
Chenille	100% Polyester	35,000 Martindale	5	4	Anti-Stain	BS 5852 part 1 - Cigarette Test PASS EN 1021-1 - Cigarette Test PASS CA Tech. Bull. 117:2013 / NFPA 260 - Cigarette Test PASS



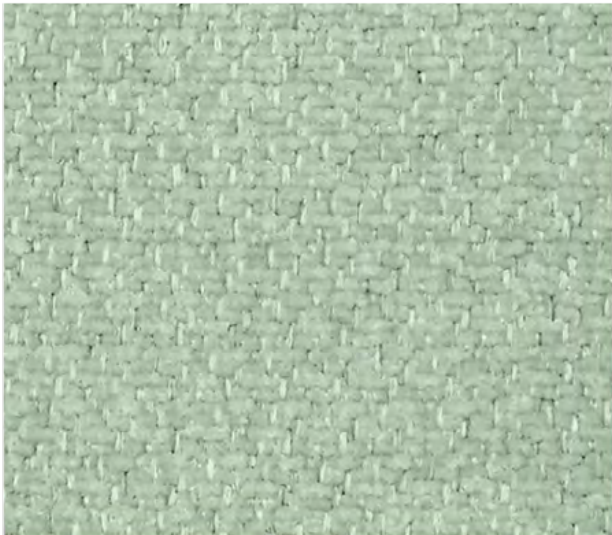
STANDARD 100  
9342CIT  
CITEVE

Caution: the displayed colours, due to technical matters, are approximate and may differ from the original





White



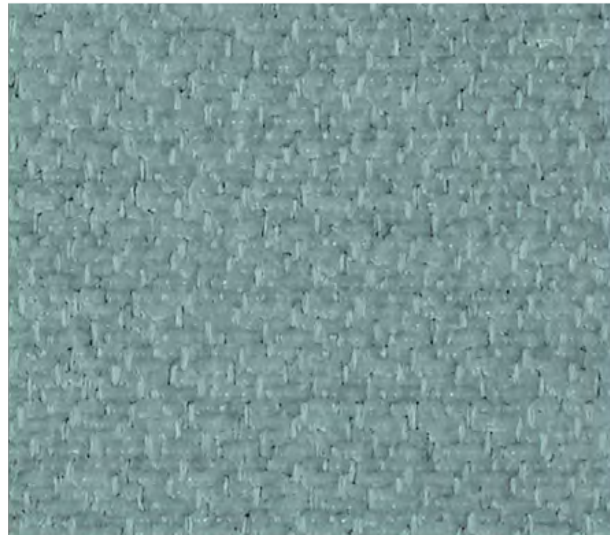
Water Green



Emerald



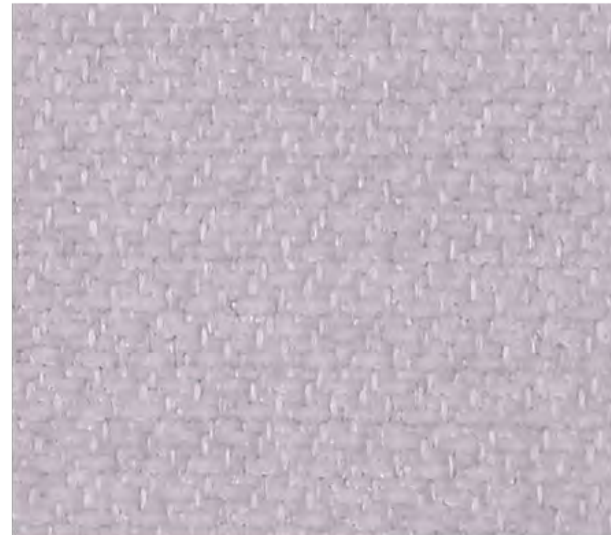
Petrol



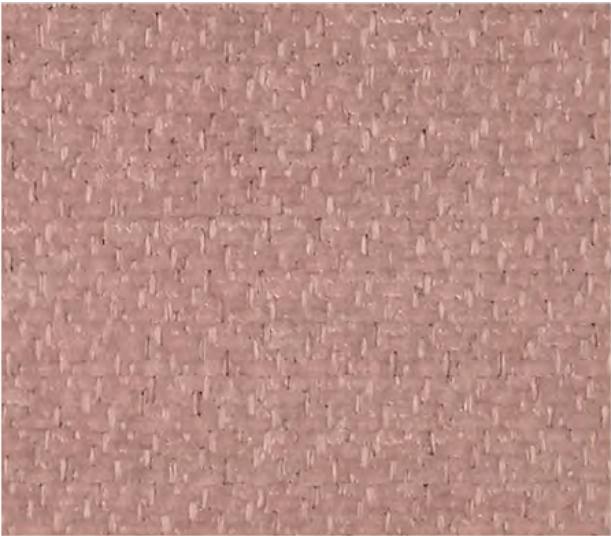
Safira



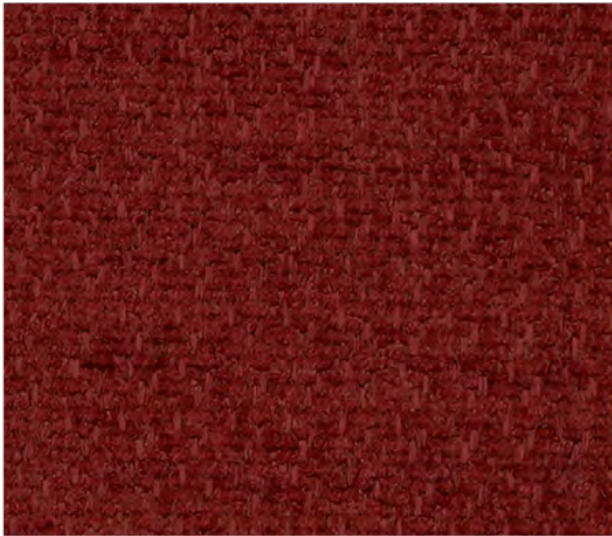
Ice



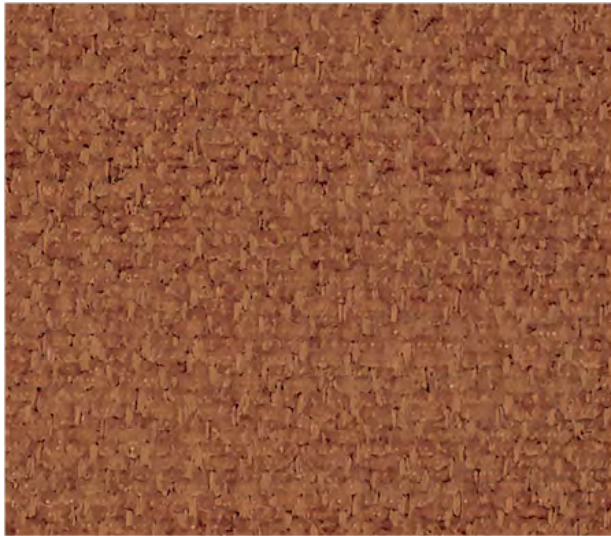
Lavanda



Old Rose



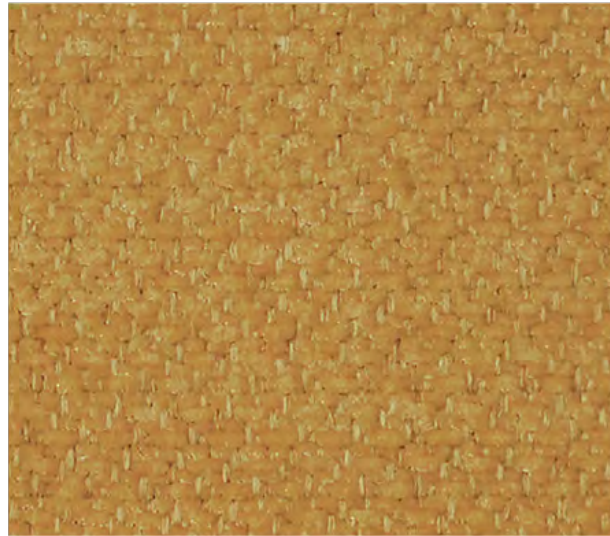
Marsala



Sienna



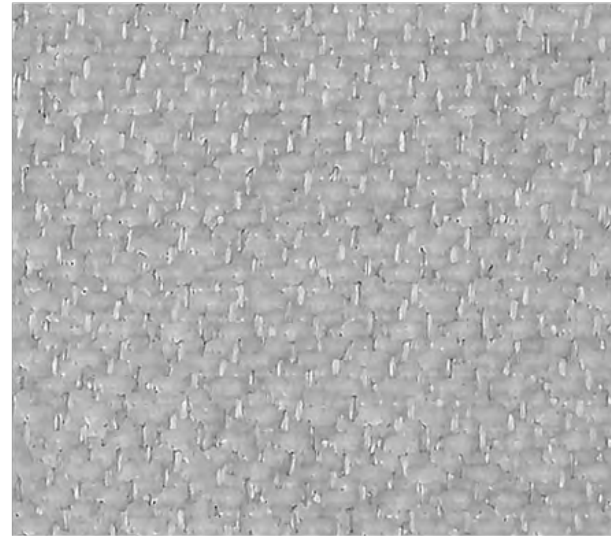
Chocolate



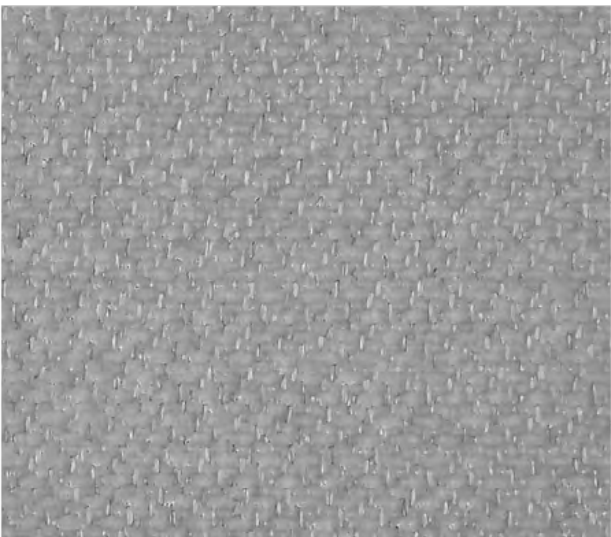
Mustaza



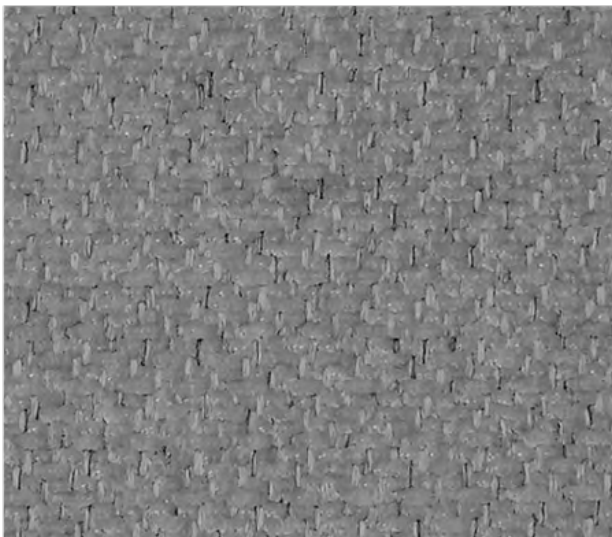
Beige



Cement



Taupe



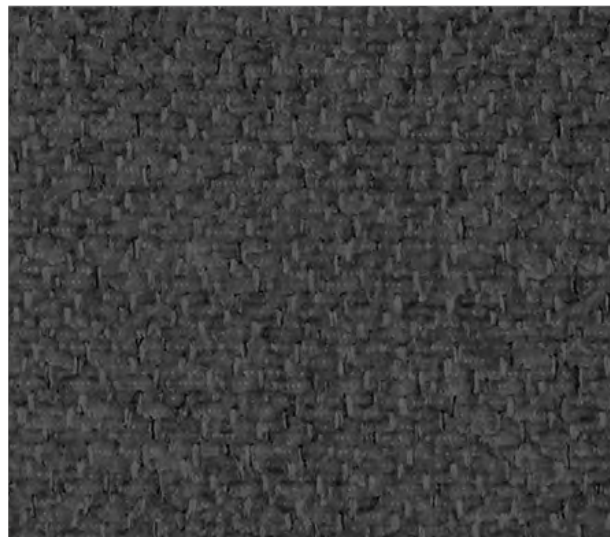
Steel



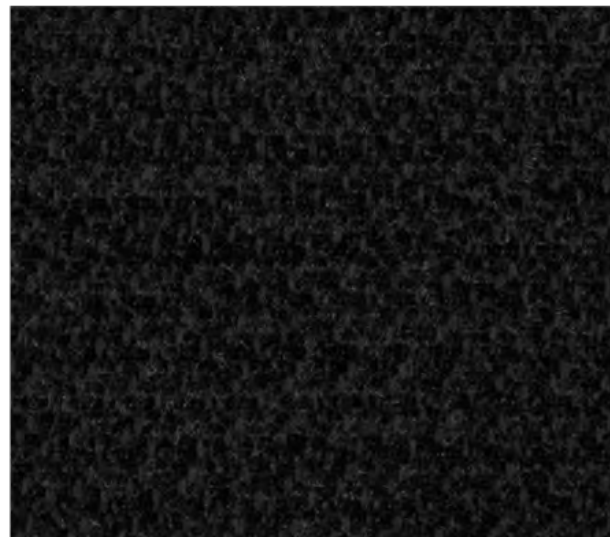
Ocean



Deep Blue



Anthracite



Black

VIENNA

FABRIC TYPE	COMPOSITION	DURABILITY	LIGHTFASTNESS	PILLING	FEATURES	FIRE TESTS
Chenille	100% Polyester	65,000 Martindale	5	4	Anti-Stain	BS 5852 part 1 - Cigarette Test PASS EN 1021-1 - Cigarette Test PASS CA Tech. Bull. 117:2013 / NFPA 260 - Cigarette Test PASS



BLUEWORLD<sup>®</sup>  
HUMAN CARE TECHNOLOGY



STANDARD  
100  
9342CIT  
CITEVE

Caution: the displayed colours, due to technical matters, are approximate and may differ from the original





Cream



Silver



Almond



Elephant



Ebony



Taupe



Camel



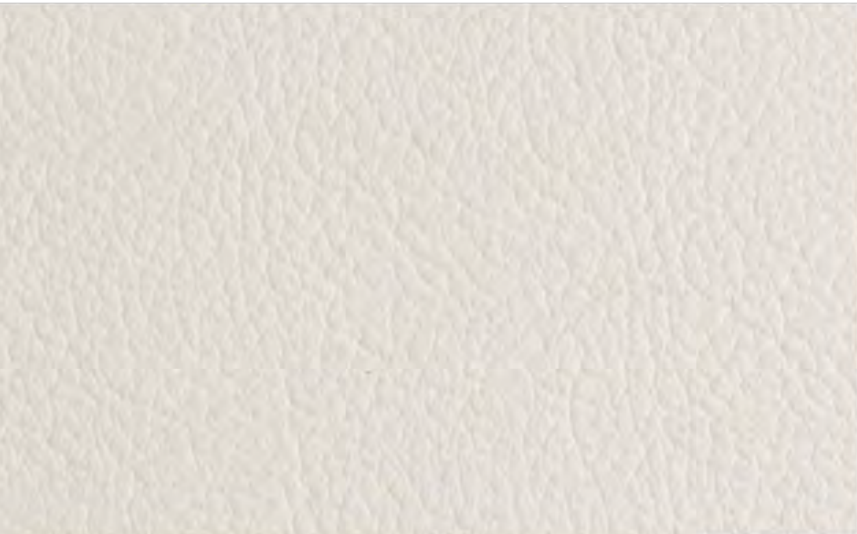
Tabacco



Avocat



Forest



Milk



Cement



Ash



Anthracite



Black

# FLORIDA

LEATHER TYPE	AVERAGE SKIN THICKNESS	RAWHIDE	PREPARATION	FIRE TESTS
Corrected Leather	0.8 - 1.0 mm	Brazilian Bovine	Corrected and Embossed Grain Protective Top Coat, Soft Handle and Silky Matte Finish	BS 5852:1979 BS EN 1021-1-2:2006

Caution: the displayed colours, due to technical matters, are approximate and may differ from the original





White



Lamb



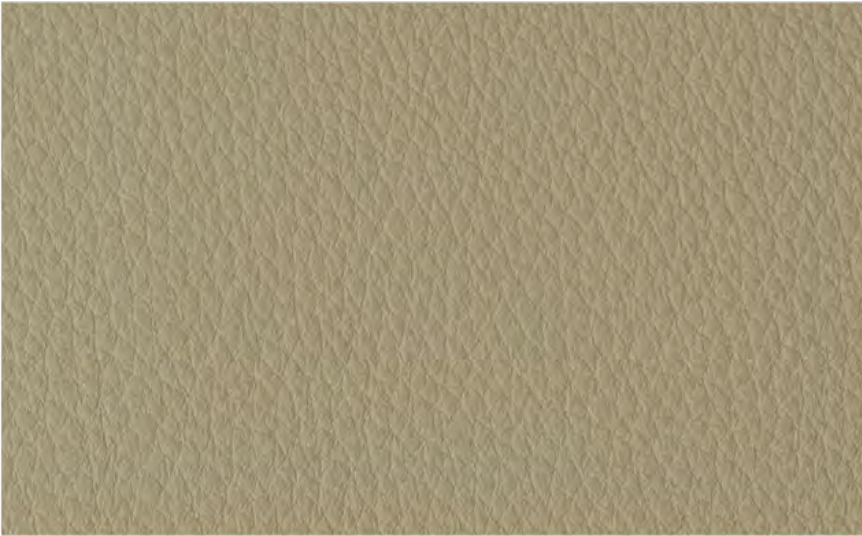
Iceberg



Mouton



Khaki



Earth



Cement



Forest



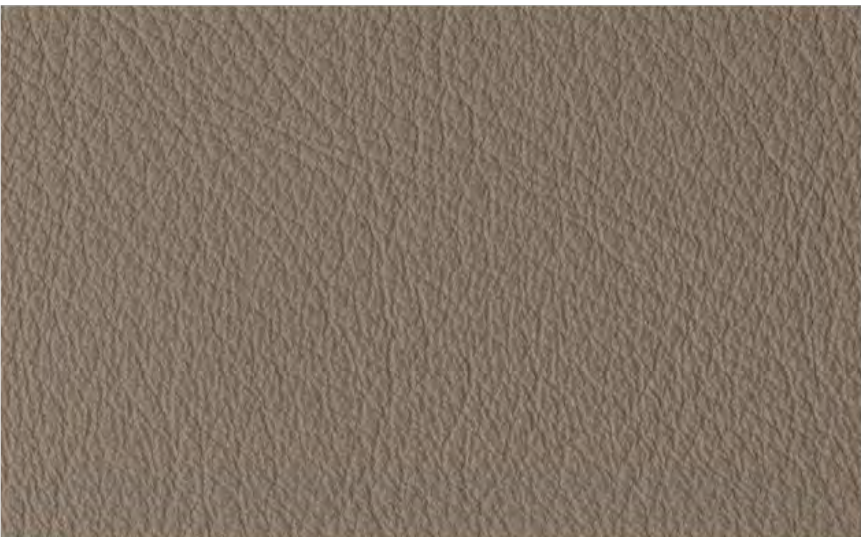
Woody



Bourgandy



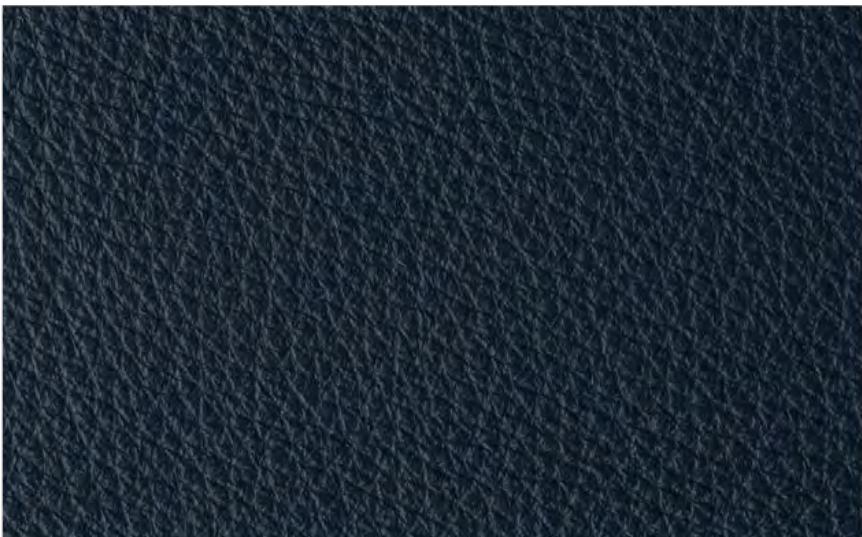
Ash



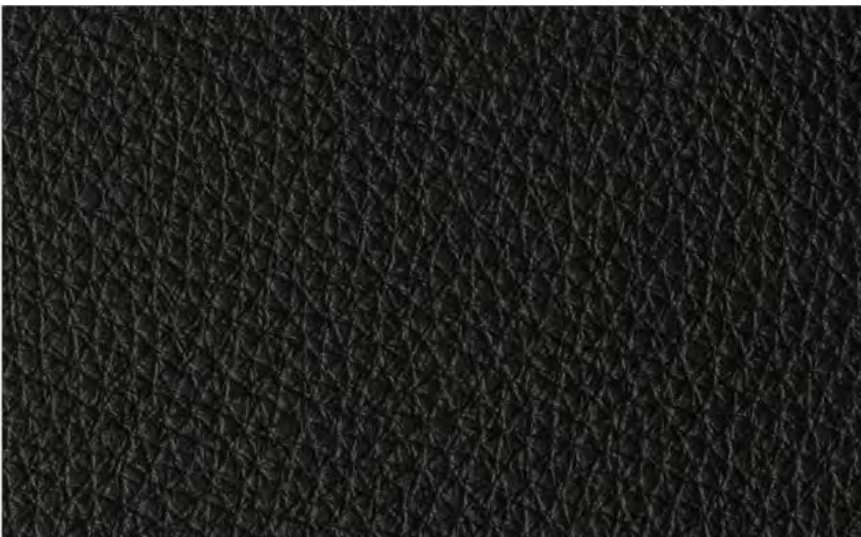
Zine



Fog



Flag



Black

ATLANTIDA

LEATHER TYPE	AVERAGE SKIN THICKNESS	RAWHIDE	PREPARATION	FIRE TESTS
Aniline Leather	1.2 - 1.4 mm	European Bovine	Lightly Buffed Natural Grain	BS 5852:1979 BS EN 1021-1-2:2006

Caution: the displayed colours, due to technical matters, are approximate and may differ from the original





Sand



Lion



Camel



Cognac



Yam



Masai



Wine



Caribou



Cement



Toffee



Seapearl



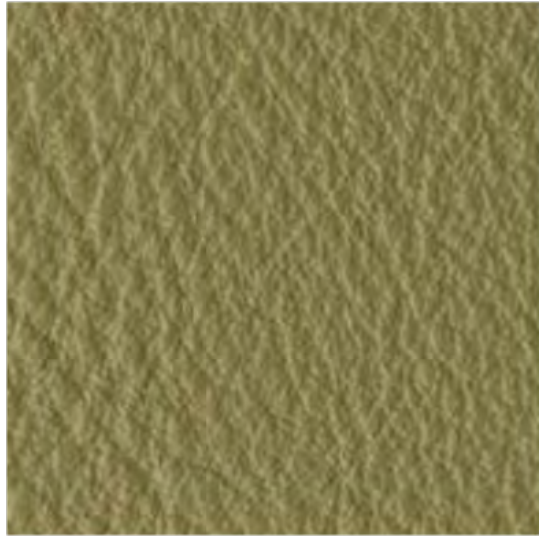
Peral



Stone



Umber



Moss



Bosco



Ivory



White



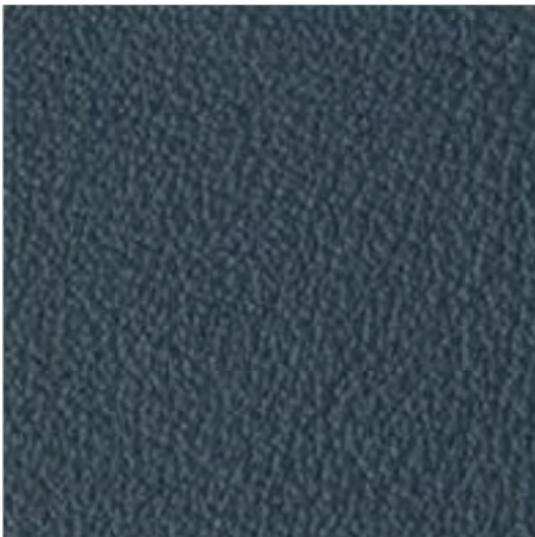
Ice



Zinc



Shadow



Graphite



Gull



Black

LAGUNA

LEATHER TYPE	AVERAGE SKIN THICKNESS	RAWHIDE	PREPARATION	FIRE TESTS
Aniline Leather	0.9 - 1.1 mm	European Bovine	Lightly Buffed Natural Grain Transparent Protective Coat, Soft Waxy Feel, Semi-Matte Finish	CAL TB-117 (2013, Sec.1) BS 5852:1979 BS EN 1021-1-2:2006

Caution: the displayed colours, due to technical matters, are approximate and may differ from the original





Khaki



Soul



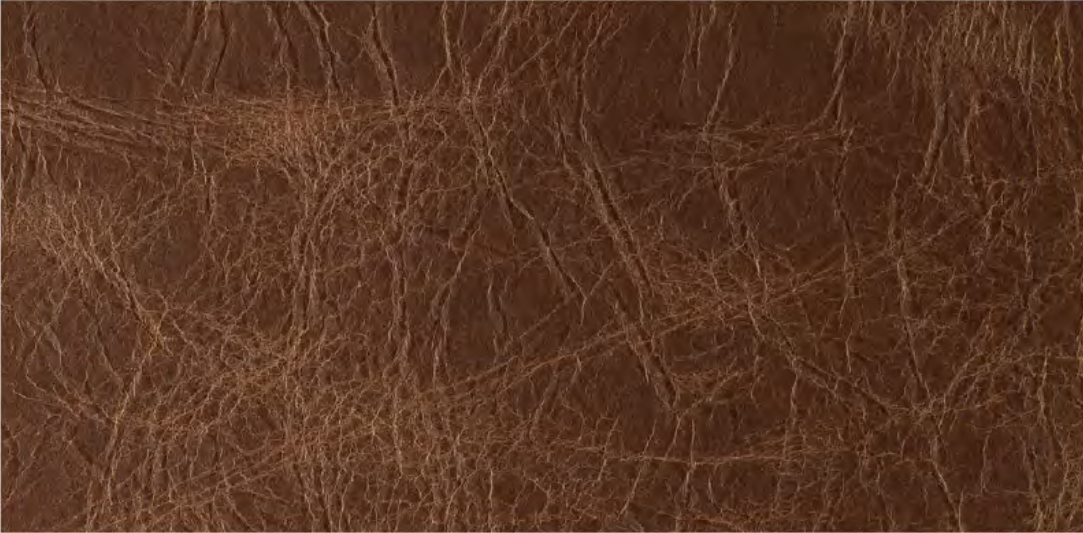
Orange



Bordeaux



Brandy



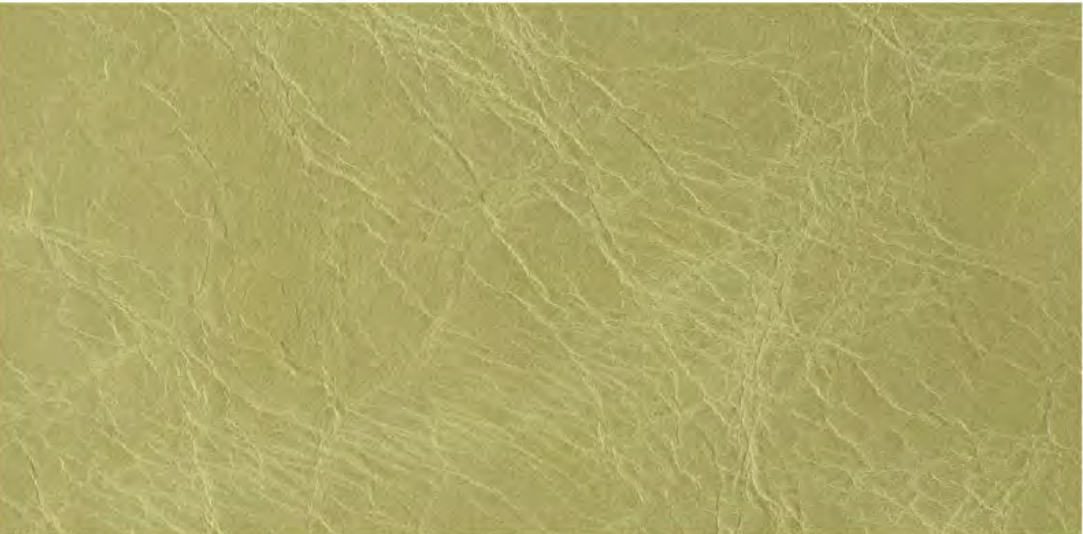
Woody



Truffle



Ebony



Lima



Musk



Sky



Blue

COUNTRY	LEATHER TYPE	AVERAGE SKIN THICKNESS	RAWHIDE	PREPARATION	FIRE TESTS
	Waxed Aniline Leather	0.8 - 1.0 mm	European Bovine	Lightly Buffed Natural Grain with Vintage Look Distressed and Semi-Glossy Appearance	BS 5852:1979 BS EN 1021-1-2:2006

Caution: the displayed colours, due to technical matters, are approximate and may differ from the original





COLUMBIA	LEATHER TYPE	AVERAGE SKIN THICKNESS	RAWHIDE	PREPARATION	FIRE TESTS
	Nubuck Leather	1.2 - 1.4 mm	European Bovine	Natural Grain Aniline Dyed, Suede Look, Liquid Repellent	BS 5852:1979 BS EN 1021-1-2:2006

Caution: the displayed colours, due to technical matters, are approximate and may differ from the original



**Not all available fabrics and colours are listed on the site. Please contact us if you would like more information on available fabrics and colours.**

Email: [info@nue-modern.com](mailto:info@nue-modern.com)

[www.nue-modern.com](http://www.nue-modern.com)