

UPHOLSTERY OPTIONS

FLEX SOFA



APOLLO

FABRIC TYPE	COMPOSITION	DURABILITY	LIGHTFASTNESS	PILLING	FEATURES	FIRE TESTS
Chenille	100% Polyester	100,000 Martindale	4 - 5	4 - 5	Anti-Stain Liquid Repellent	BS 5852 part 1 - Cigarette Test PASS EN 1021-1 - Cigarette Test PASS CA Tech. Bull. 117:2013 / NFPA 260 - Cigarette Test PASS



Caution: the displayed colours, due to technical matters, are approximate and may differ from the original



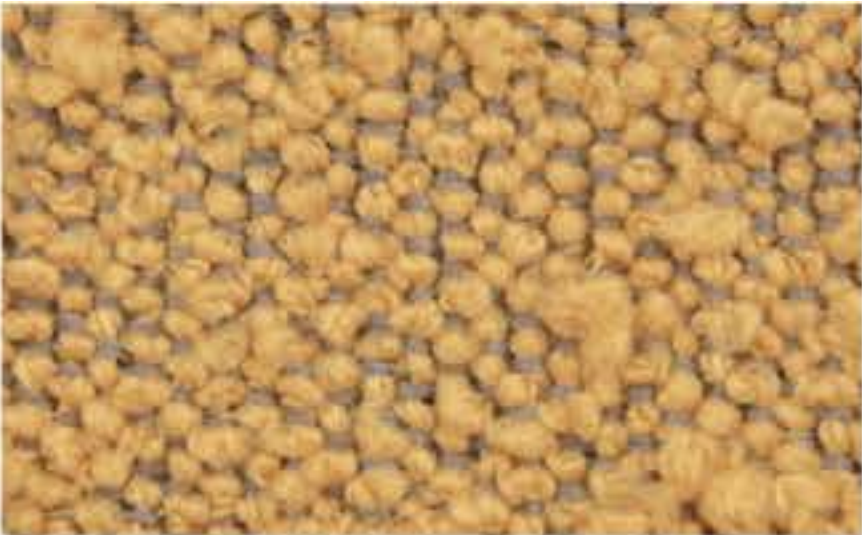
Nata



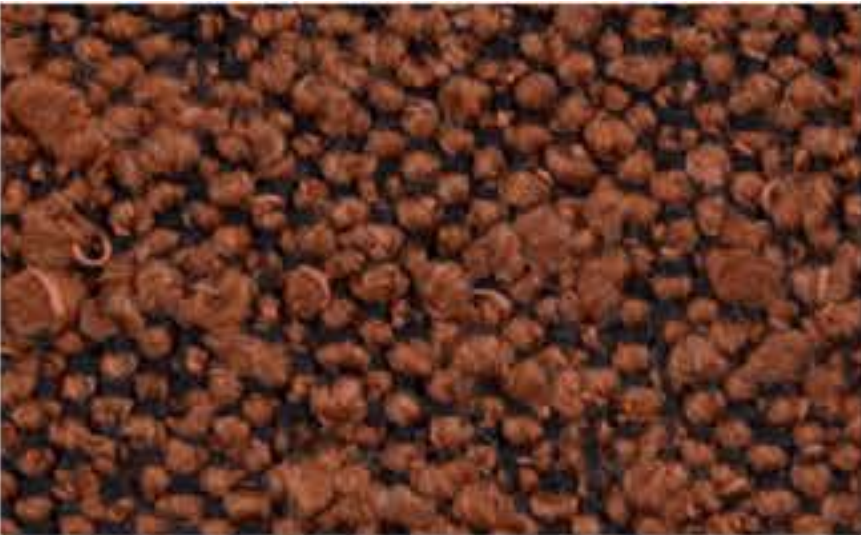
Pearl



Champagne



Mostaza



Brick



Pink



Toffee



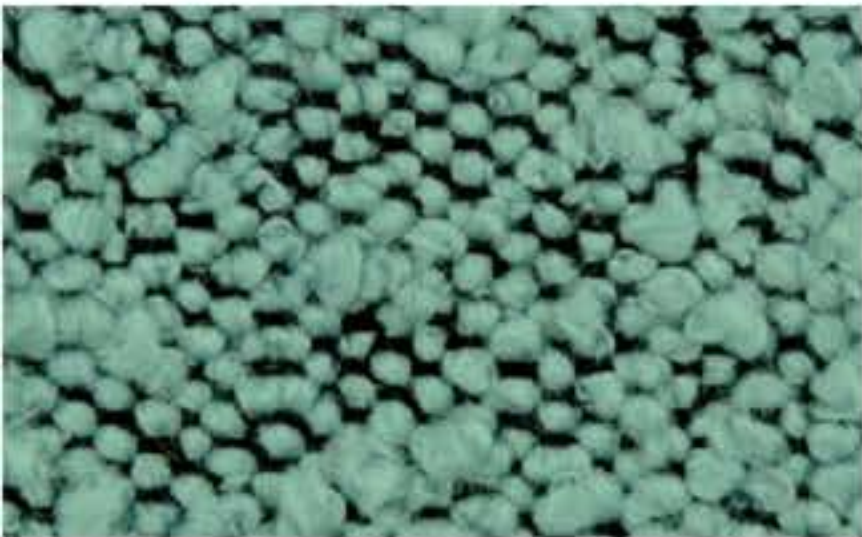
Taupe



Mouse



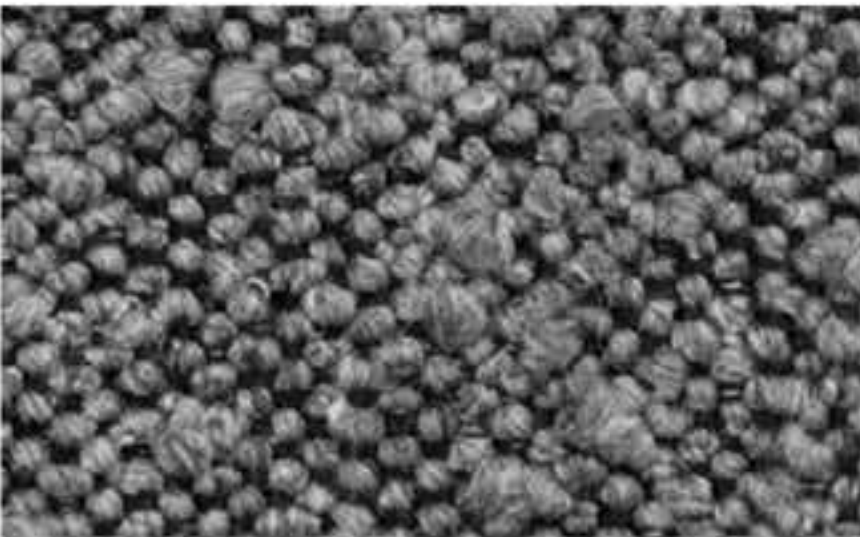
Olive Green



Safira



Atlantic



Graphite



Black

ASCOT

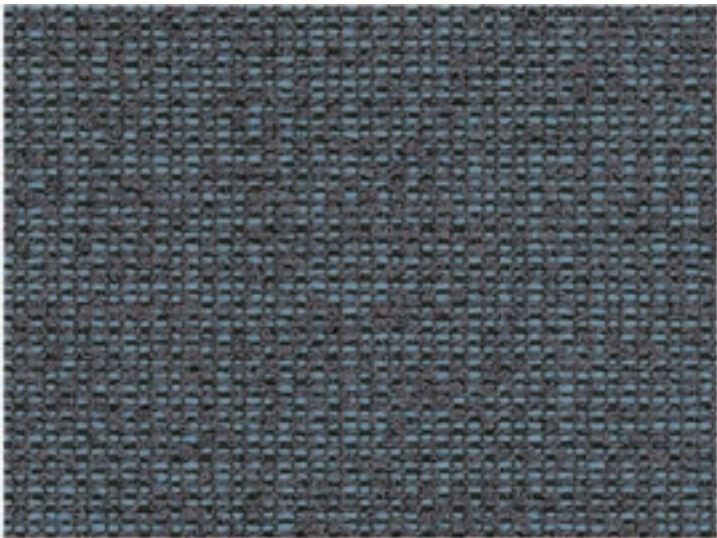
FABRIC TYPE	COMPOSITION	DURABILITY	LIGHTFASTNESS	PILLING	FIRE TESTS
Bouclé	100% Polyester	80,000 Martindale	5	4	BS 5852 part 1 - Cigarette Test PASS EN 1021-1 - Cigarette Test PASS CA Tech. Bull. 117:2013 / NFPA 260 - Cigarette Test PASS



Caution: the displayed colours, due to technical matters, are approximate and may differ from the original



Saturation



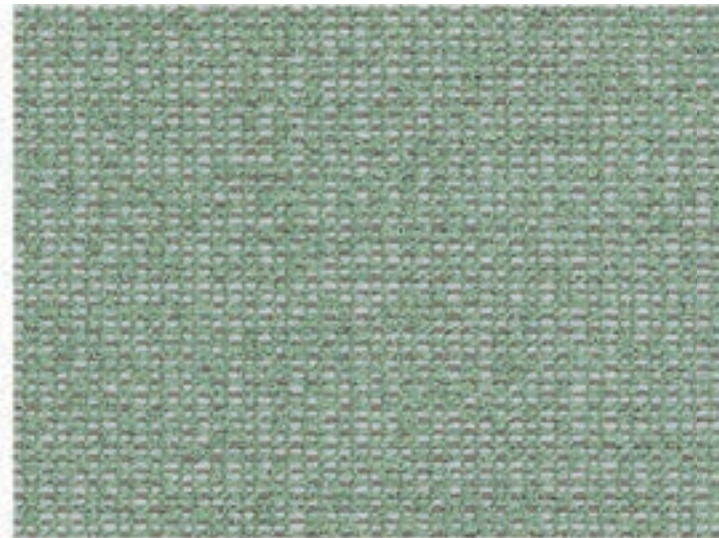
Tempera



Purity



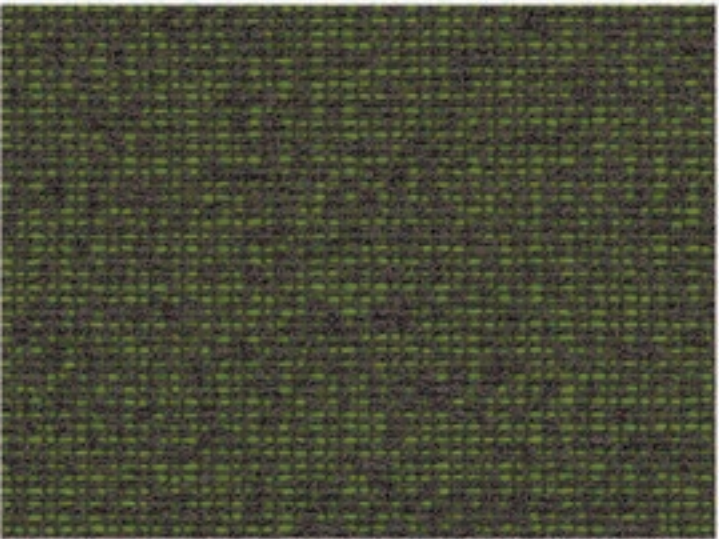
Prism



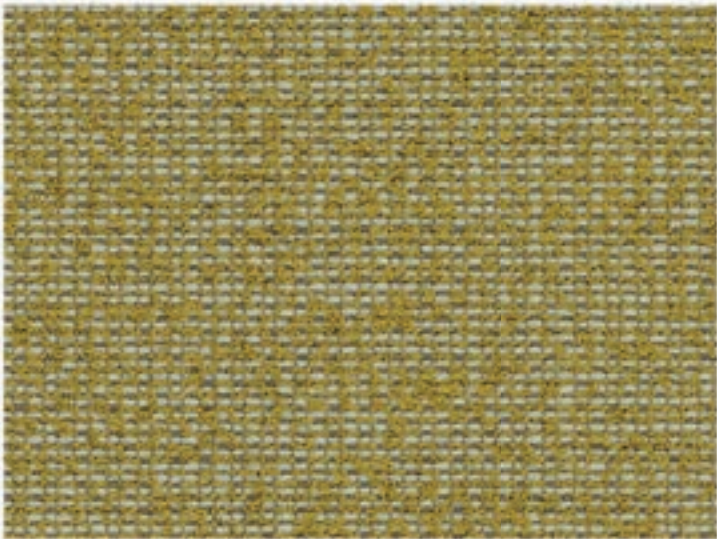
Gamut



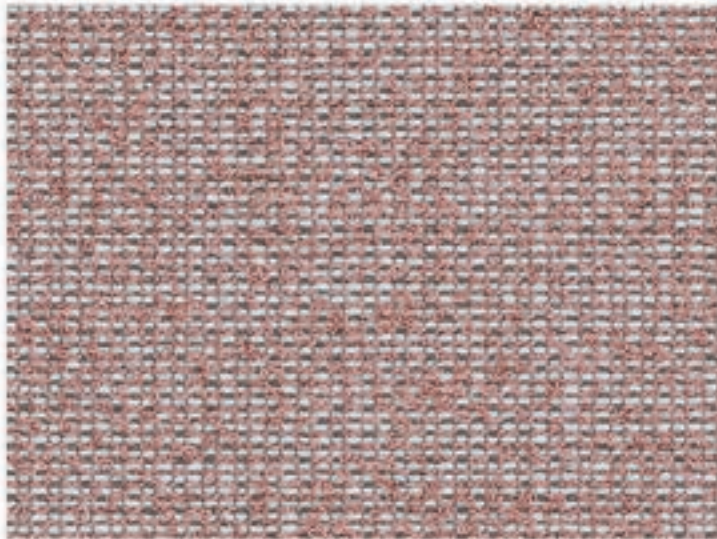
Tone



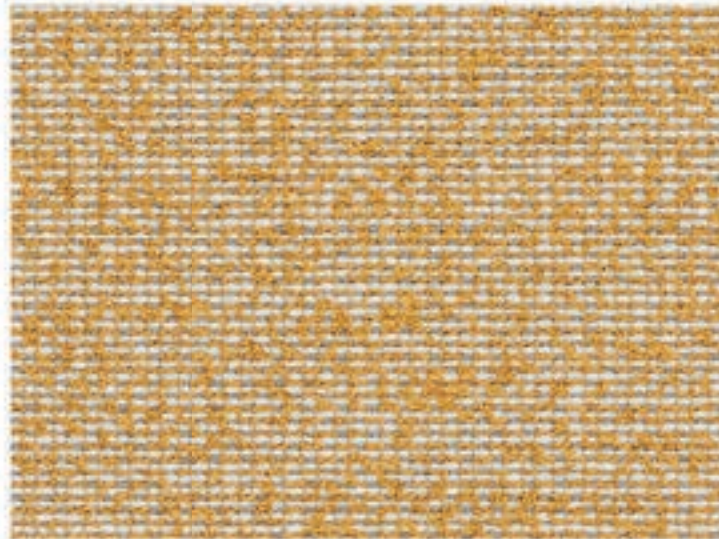
Goethe



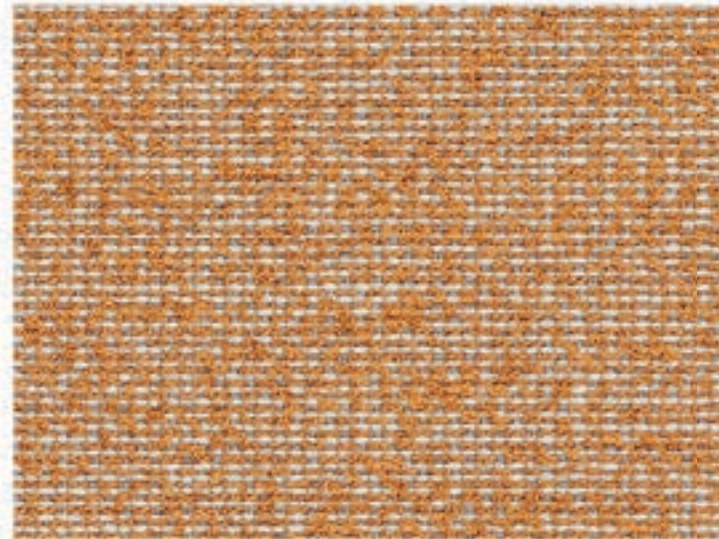
Hue



Pigment



Glow



Newton



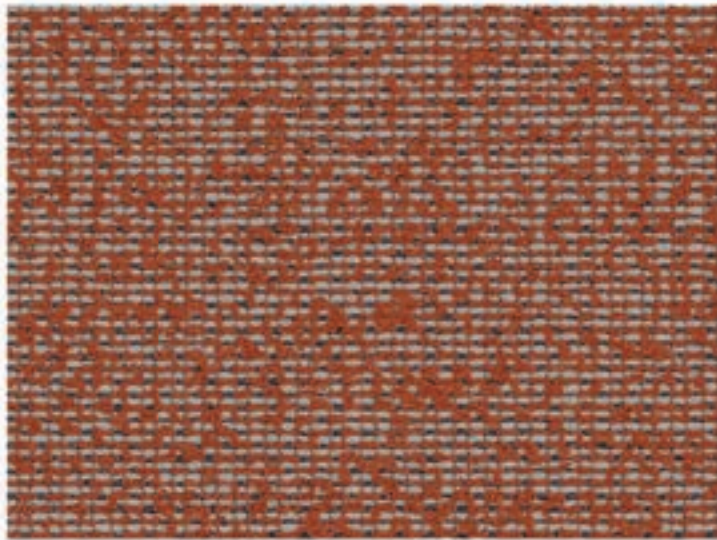
Dark



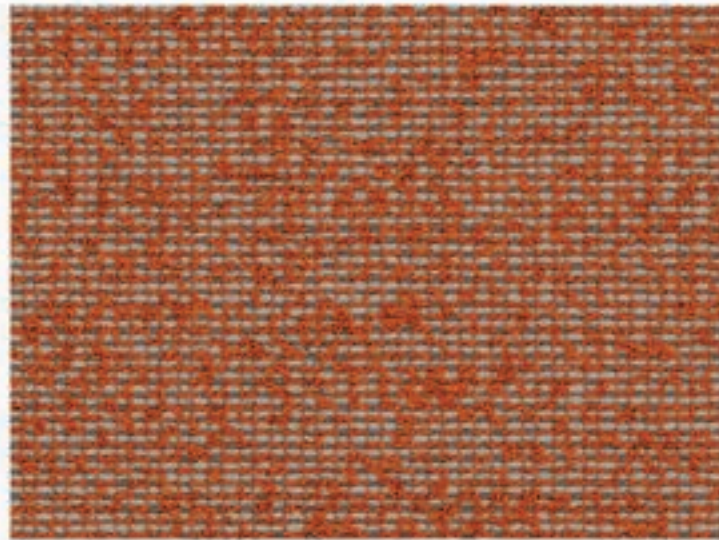
Hint



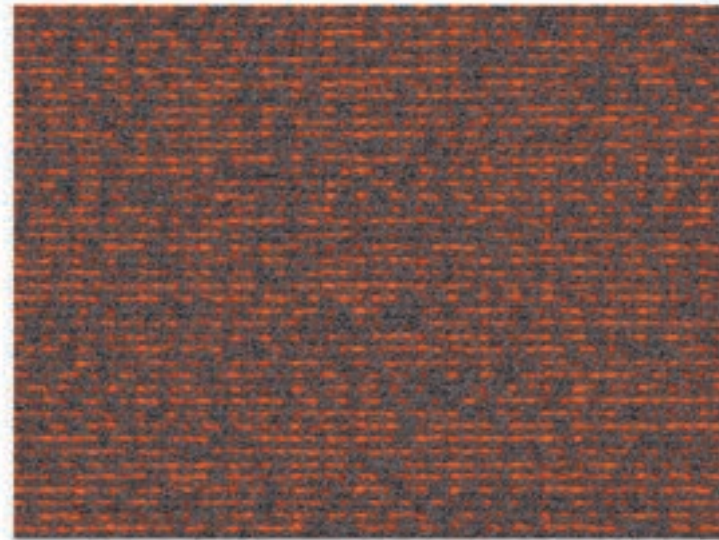
Trace



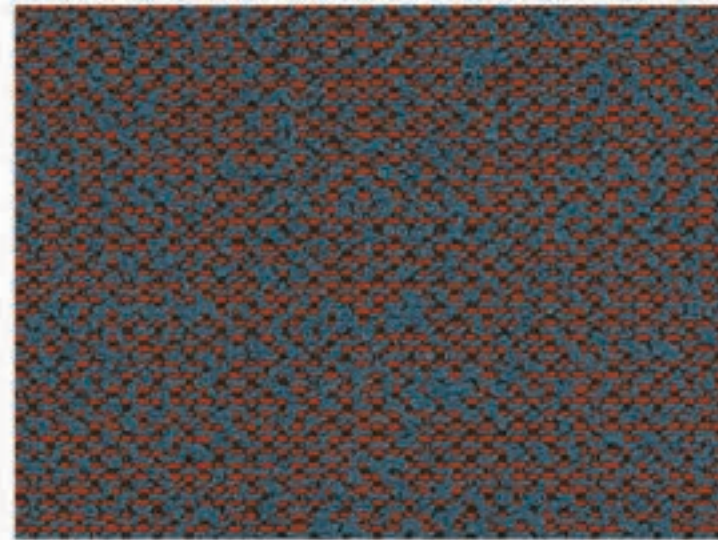
Render



Diad



Radiance



Harlequin

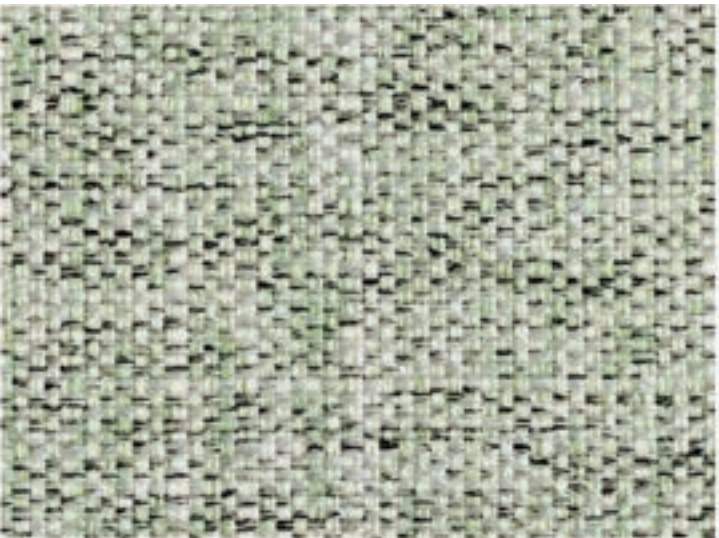
AUCKLAND

By Vescom

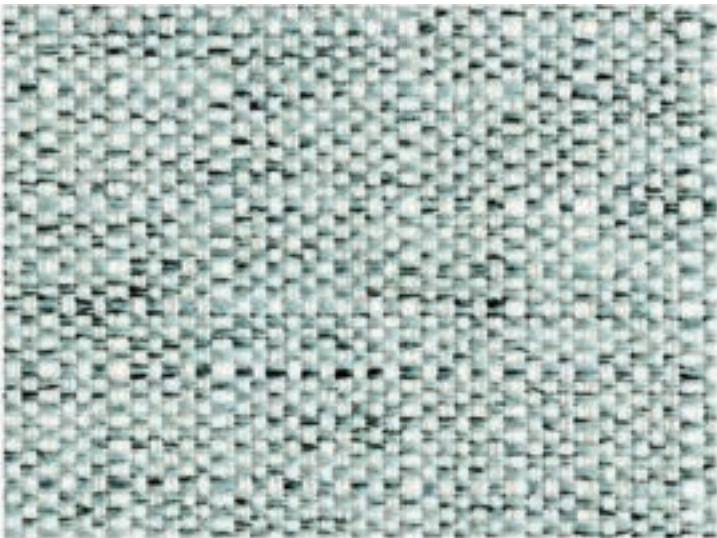


FABRIC TYPE	COMPOSITION	DURABILITY	LIGHTFASTNESS	PILLING	FIRE TESTS
Bouclé	76% Recycled Polyester FR 24% Polyester FR	60,000 Martindale	6	4	EN 1021/1-2, Pass; BS 5852, Crib 5; NF P 92/503-507 or NF D 60-013, M1 DIN 4102, B1 Cal TB 117-2013, section 1, Pass; IMO 2010 FTP part 8, Pass; NFPA 260, Class 1

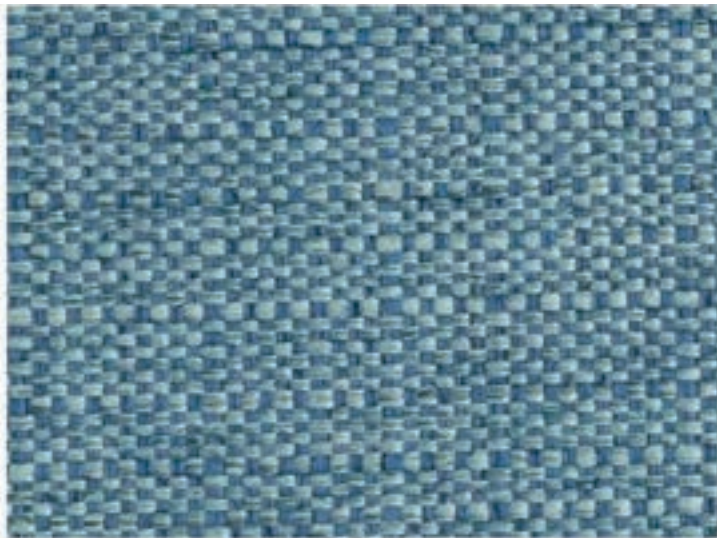
Caution: the displayed colours, due to technical matters, are approximate and may differ from the original



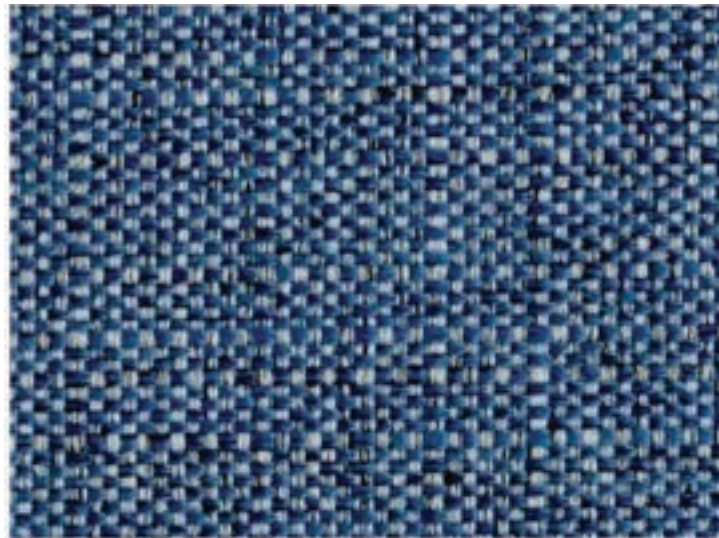
Water Green



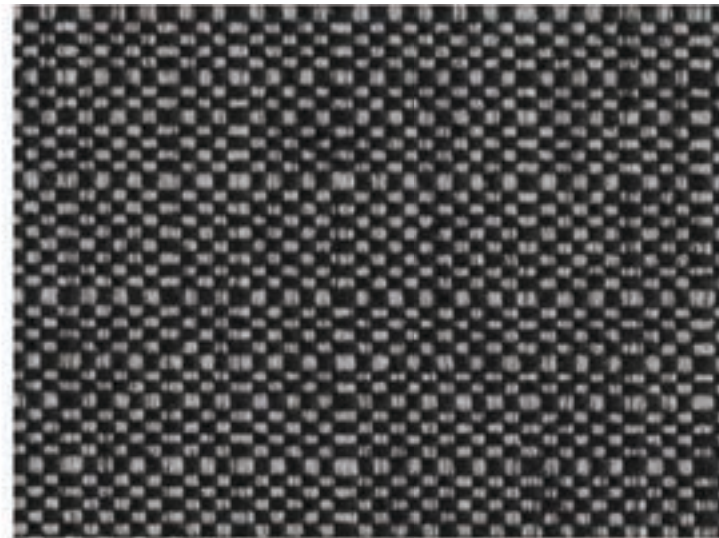
Safura



Sky



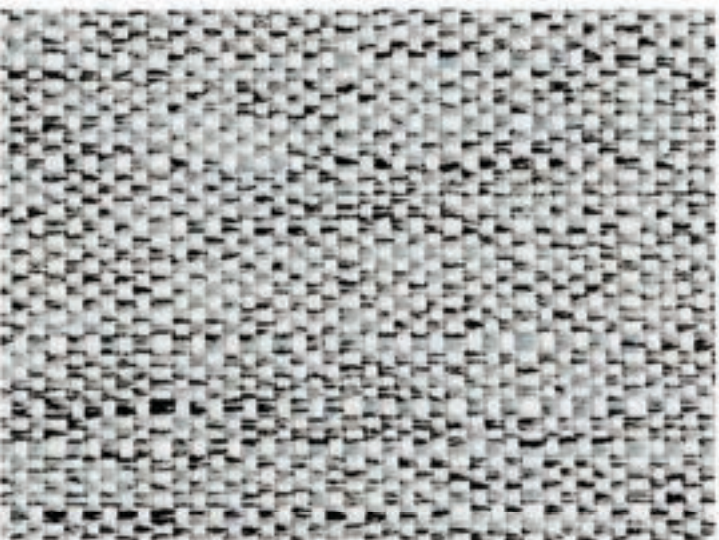
Blue



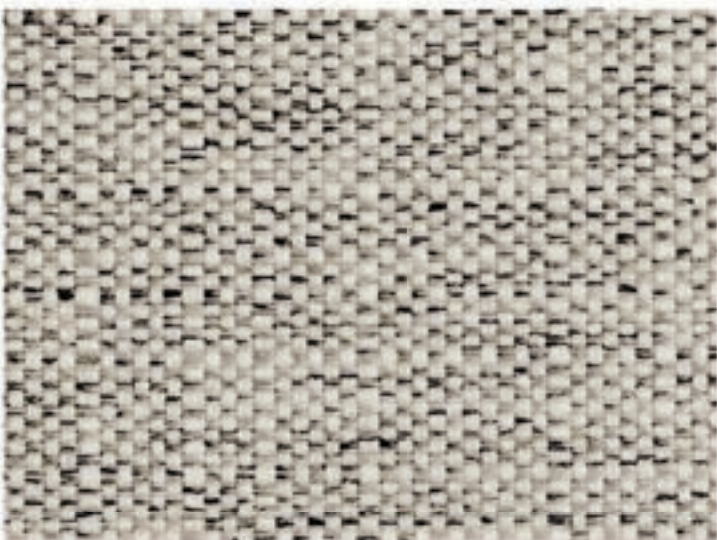
Black



Ash



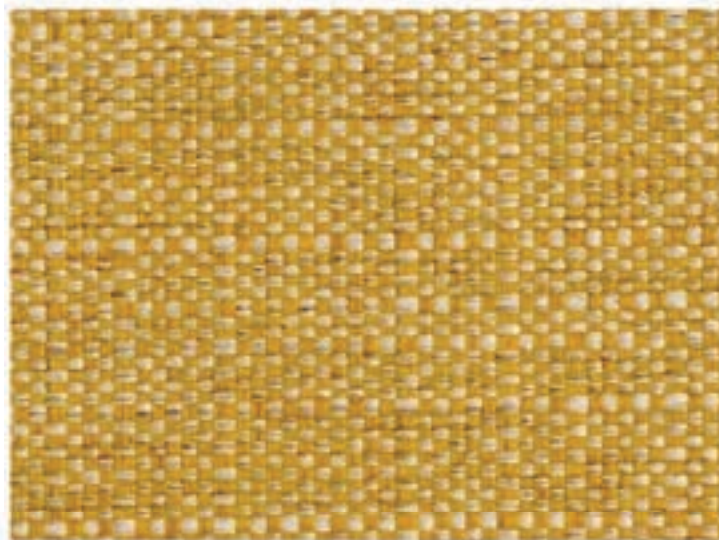
Light Grey



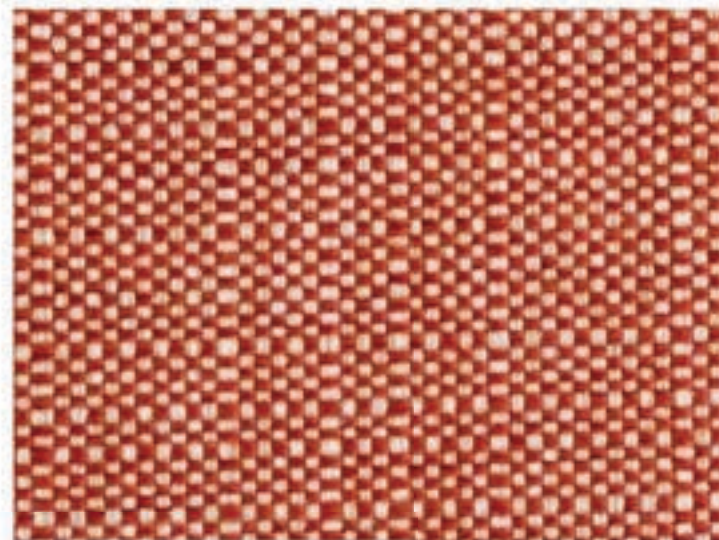
Silver



White



Yellow



Red



Salmon



Sand



Beige



Mouse



Taupe



Terra



Chocolate

BABEL

FABRIC TYPE	COMPOSITION	DURABILITY	LIGHTFASTNESS	PILLING	FEATURES	FIRE TESTS
Flat Weave	100% Polyester	90,000 Martindale	4	3 - 5	Easy-to-Clean Breathable Pet Friendly	BS 5852 part 1 - Cigarette Test PASS EN 1021-1 - Cigarette Test PASS CA Tech. Bull. 117:2013 / NFPA 260 - Cigarette Test PASS



BLUEWORLD[®]
HUMAN CARE TECHNOLOGY



STANDARD
100
9342CIT
CITEVE

Caution: the displayed colours, due to technical matters, are approximate and may differ from the original



White



Sand



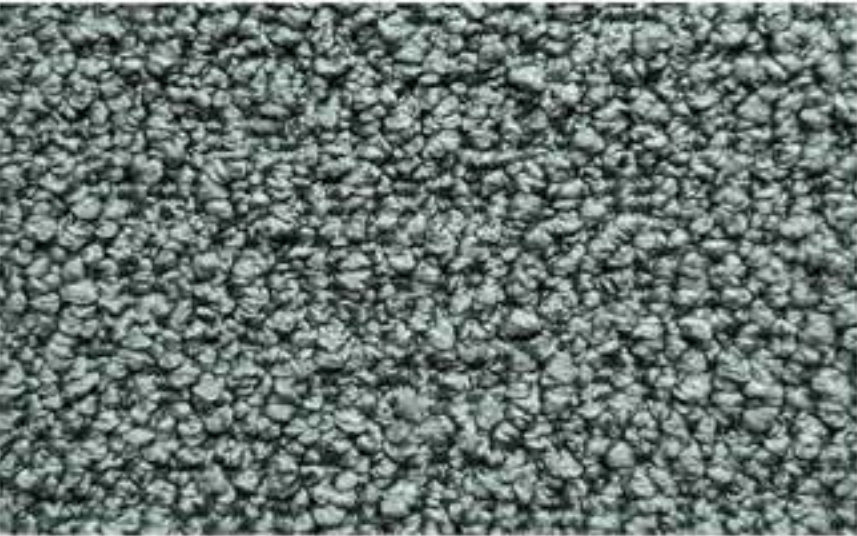
Pale Rose



Paprika



Cinnamon



Aqua



Pine



Hunter



Dark Forest



Fossil



Pebble



Dove



Stone



Shadow



Charcoal

BOUCLÉ

FABRIC TYPE	COMPOSITION	DURABILITY	LIGHTFASTNESS	PILLING
Bouclé	100% Polyester	80,000 Martindale	3	4

Caution: the displayed colours, due to technical matters, are approximate and may differ from the original

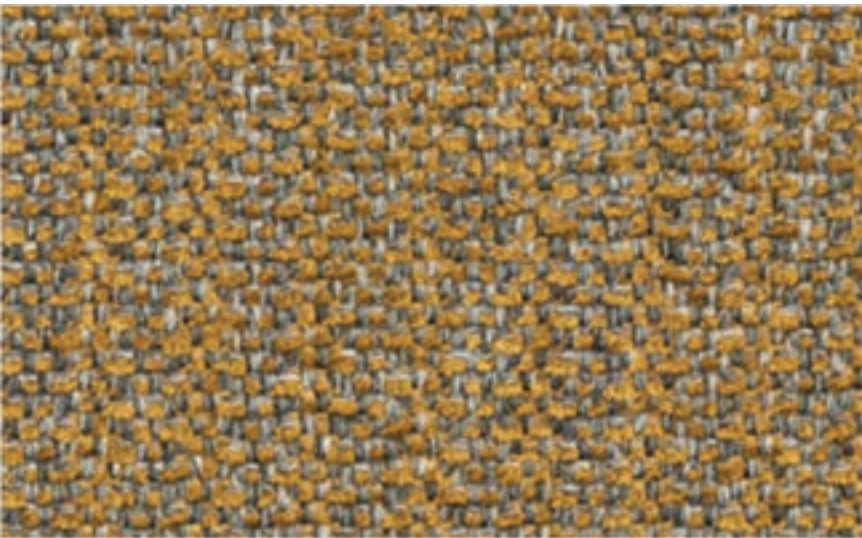


CASINO

FABRIC TYPE	COMPOSITION	DURABILITY	LIGHTFASTNESS	PILLING	FEATURES	FIRE TESTS
Velvet - Matte Finish	100% Polyester	100,000 Martindale	4 - 5	4 - 5	Anti-Stain Pet Friendly	BS 5852 part 1 - Cigarette Test PASS EN 1021-1 - Cigarette Test PASS CA Tech. Bull. 117:2013 / NFPA 260 - Cigarette Test PASS



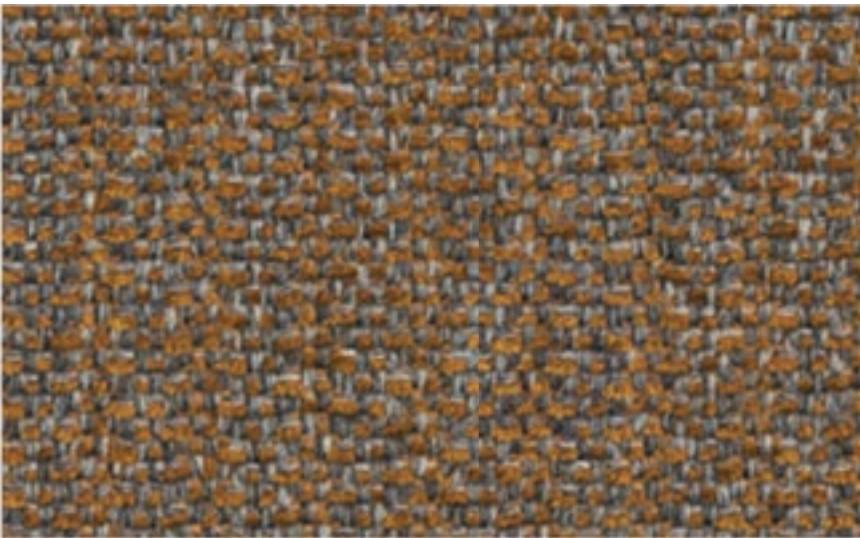
Caution: the displayed colours, due to technical matters, are approximate and may differ from the original



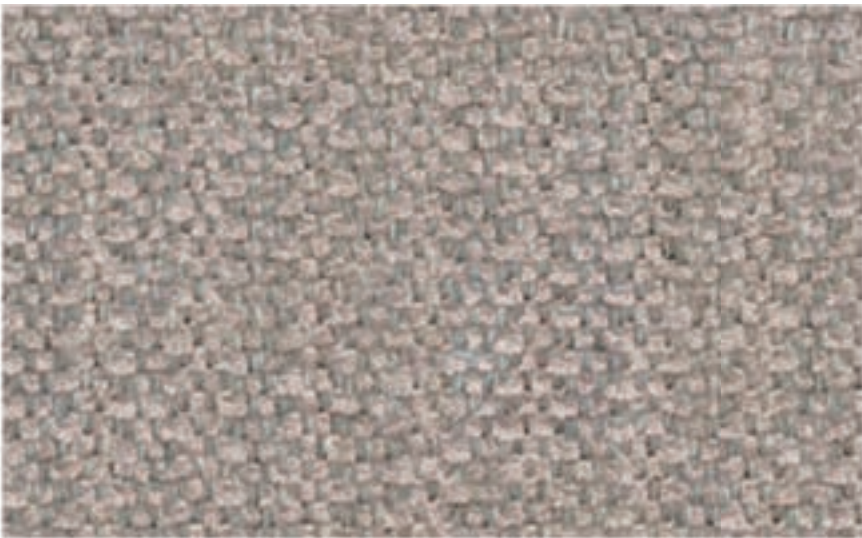
Fortress



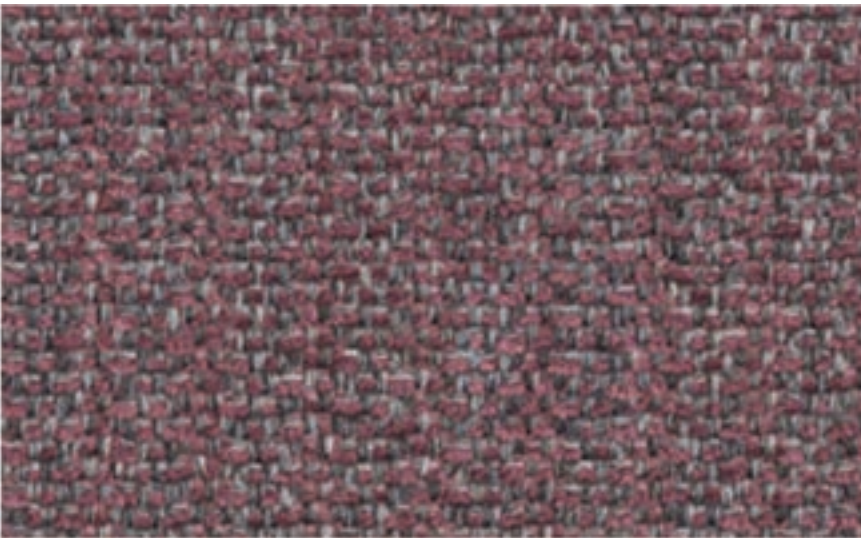
Beacon



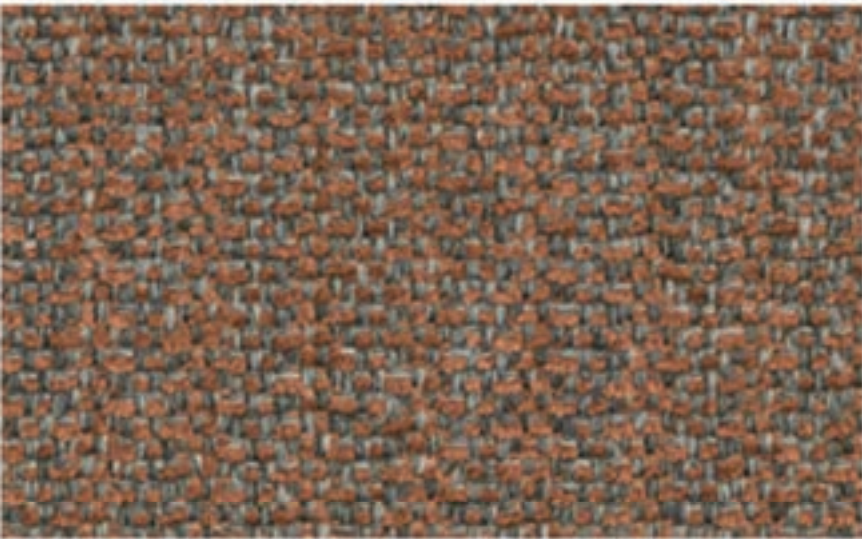
Redoubt



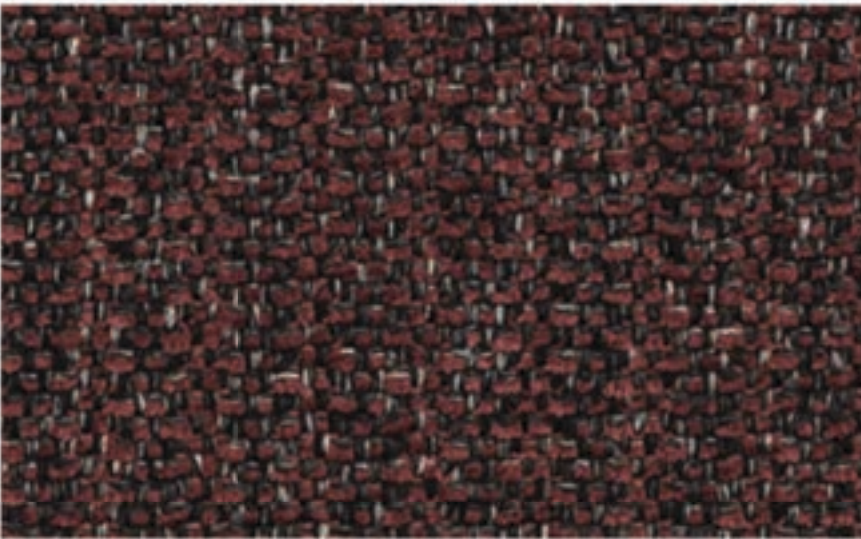
Drawbridge



Augusta



Hideaway



Hamilton



Resistance



Stillwater



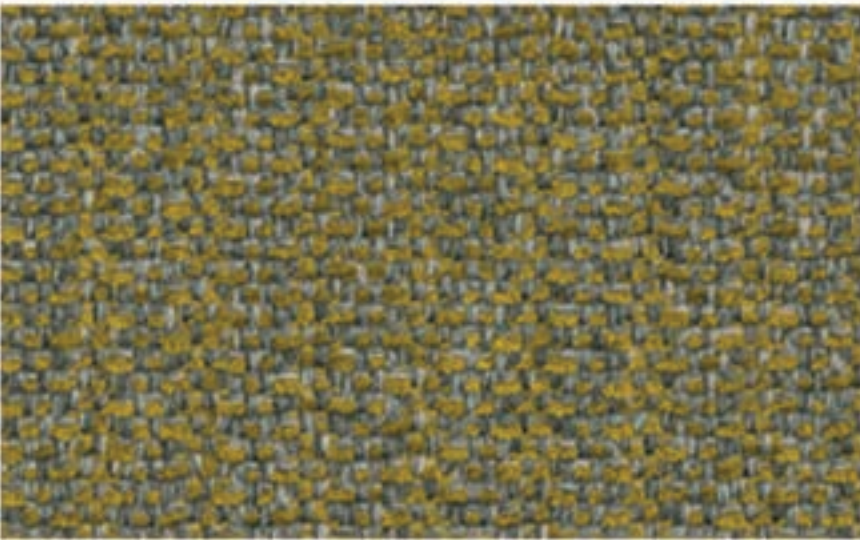
Confine



Craven



Ralstone



Bingham



Abide

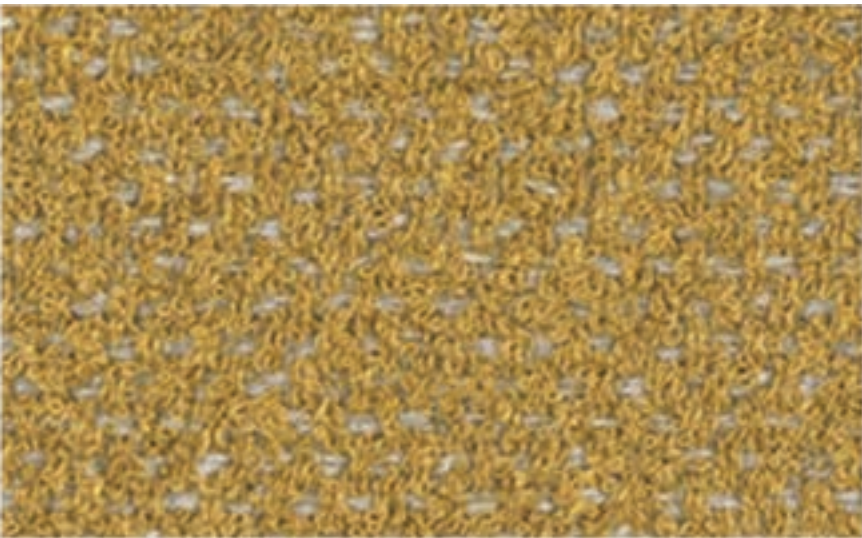
DIKSON

By Vescom

FABRIC TYPE	COMPOSITION	DURABILITY	LIGHTFASTNESS	PILLING	FIRE TESTS
Chenille	100% Polyester	100,000 Martindale	6	4 - 5	EN 1021/1-2, Pass; BS 5852, Crib 5; NF P 92/503-507 or NF D 60-013, M1 DIN 4102, B1 Cal TB 117-2013, section 1, Pass; IMO 2010 FTP part 8, Pass; NFPA 260, Class 1



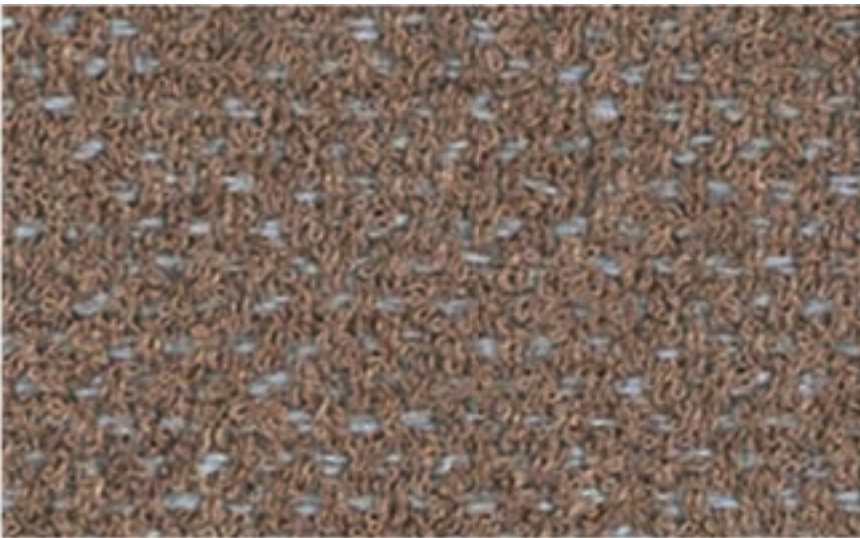
Caution: the displayed colours, due to technical matters, are approximate and may differ from the original



Caponex



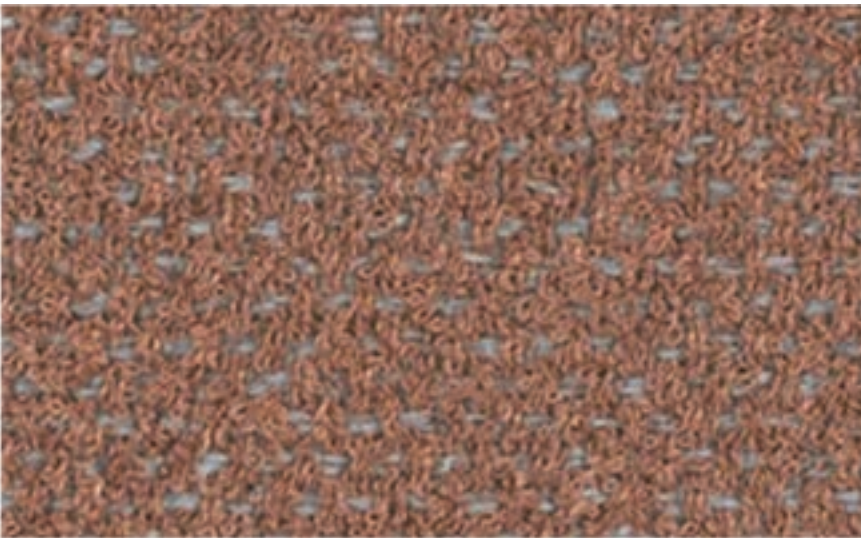
Palenque



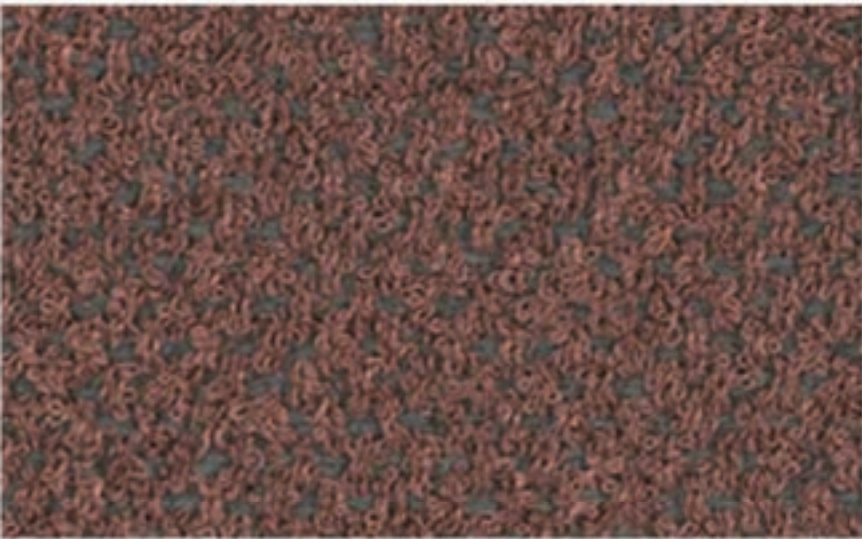
Gorkha



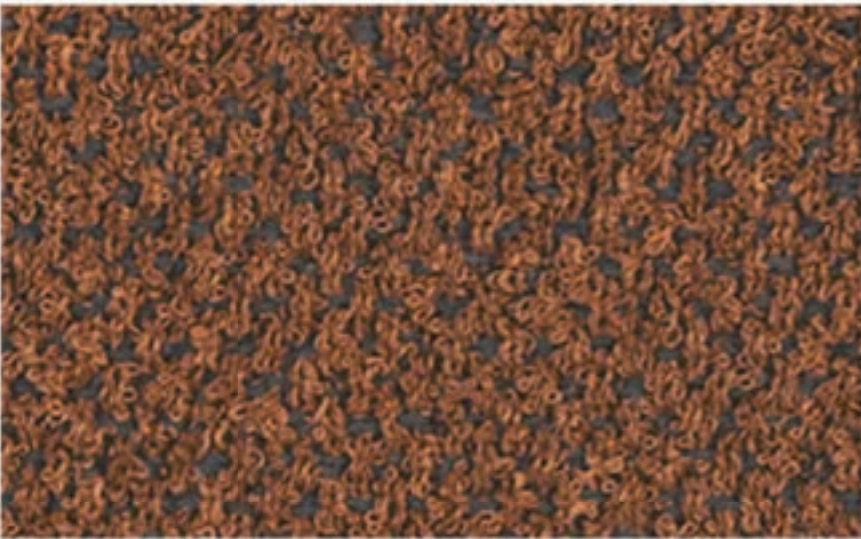
Petra



Meteora



Zion



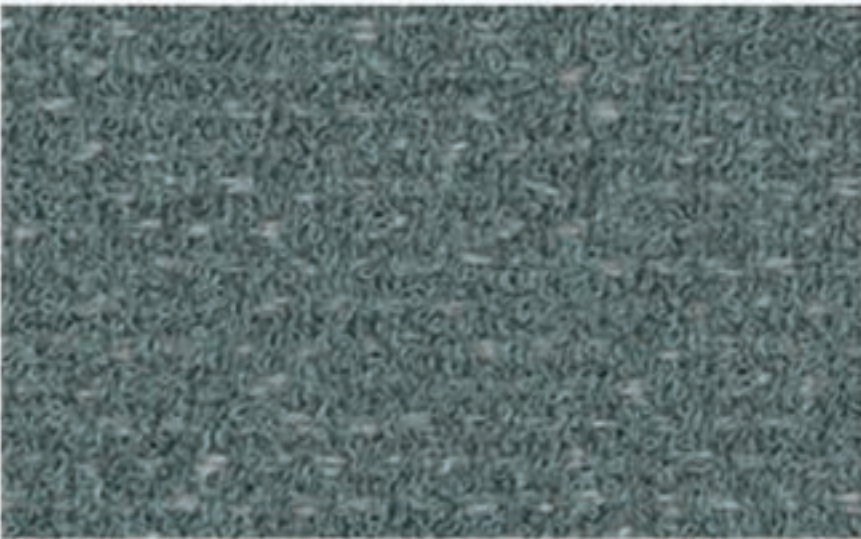
Marrakech



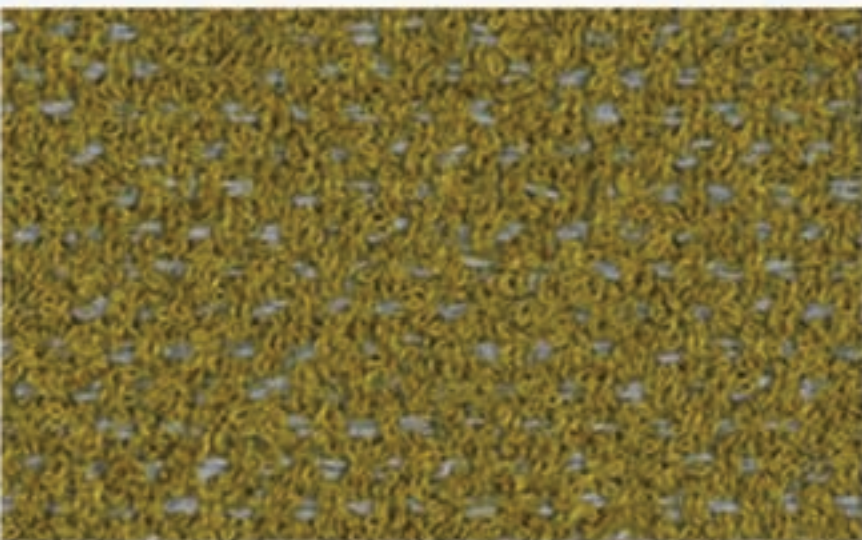
Dolomites



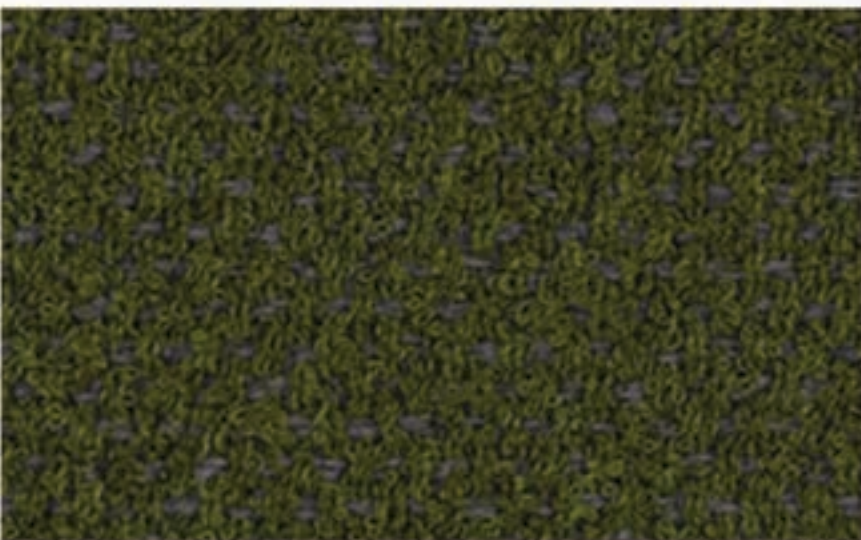
Halong



Molokai



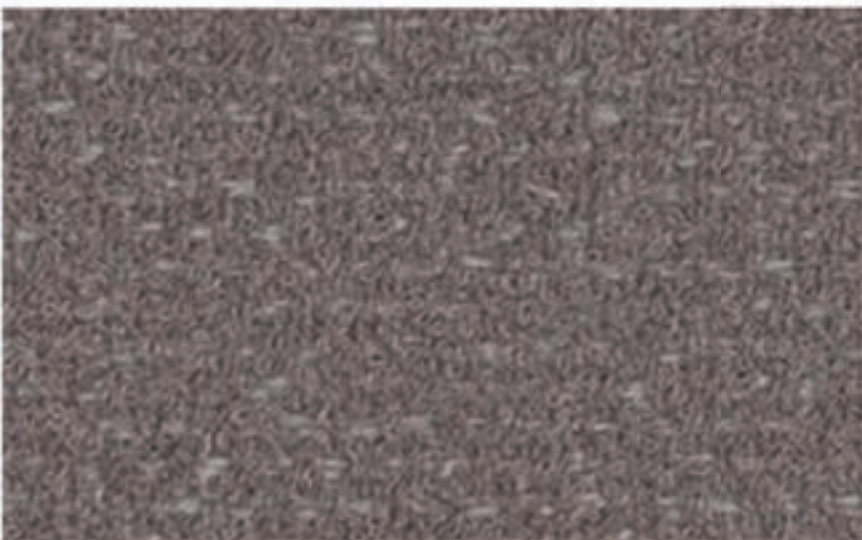
Yosemite



Patagonia



Rainer



Calabria



Malham

FOSTER

By Vescom

FABRIC TYPE	COMPOSITION	DURABILITY	LIGHTFASTNESS	PILLING	FIRE TESTS
Bouclé	97% Recycled Polyester FR 3% Polyester FR	60,000 Martindale	6	4	EN 1021/1-2, Pass; BS 5852, Crib 5; NF P 92/503-507 or NF D 60-013, M1 DIN 4102, B1 Cal TB 117-2013, section 1, Pass; IMO 2010 FTP part 8, Pass; NFPA 260, Class 1



Caution: the displayed colours, due to technical matters, are approximate and may differ from the original



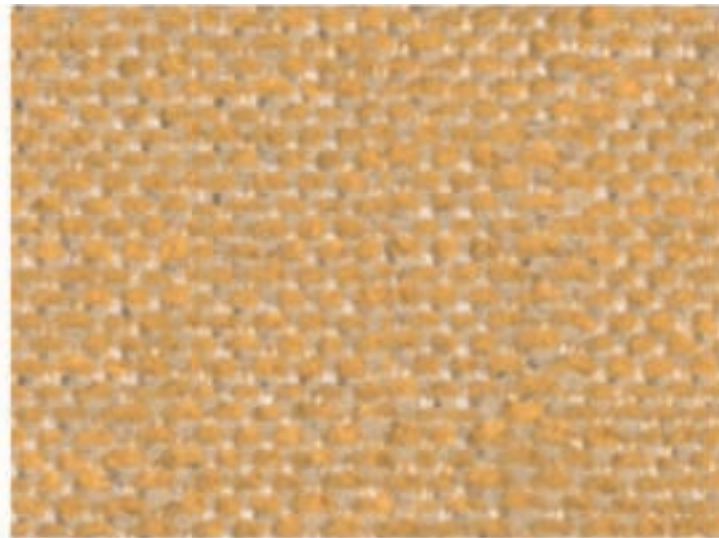
Vit



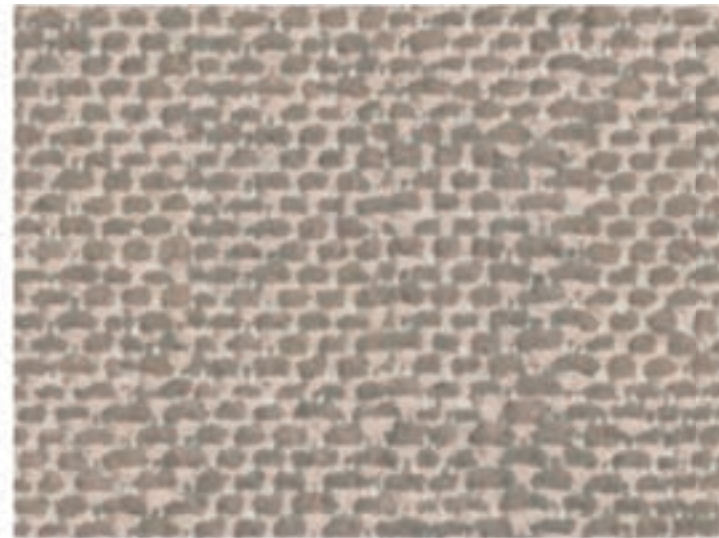
Clan



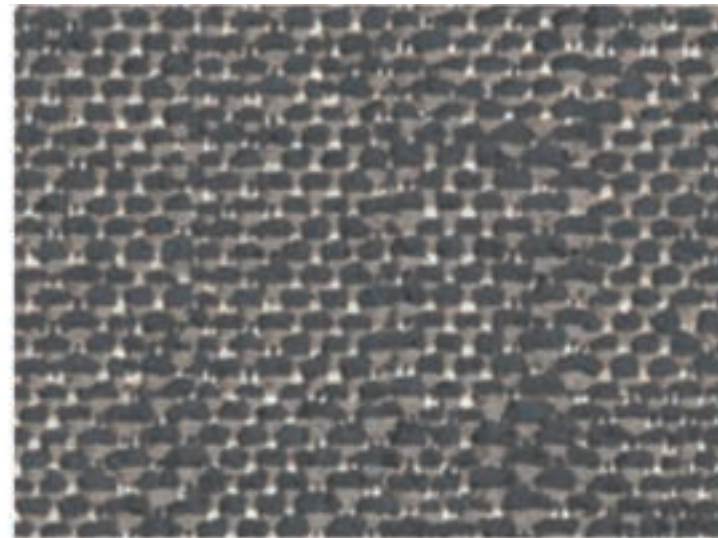
Shetland



Lora



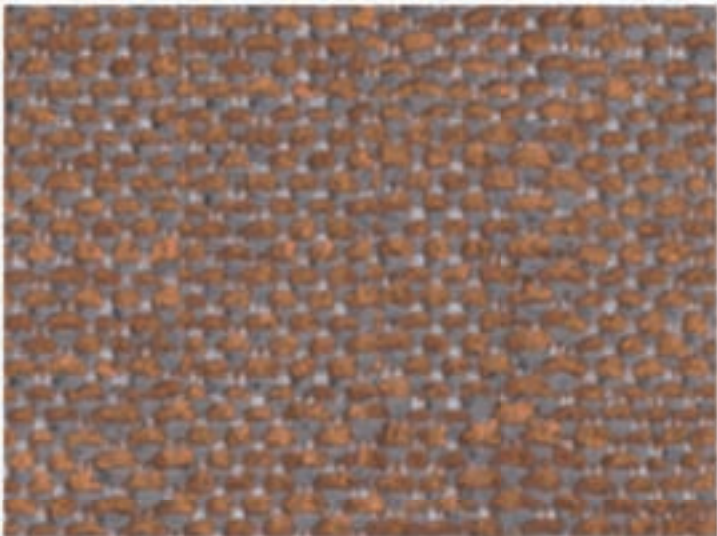
Hillswick



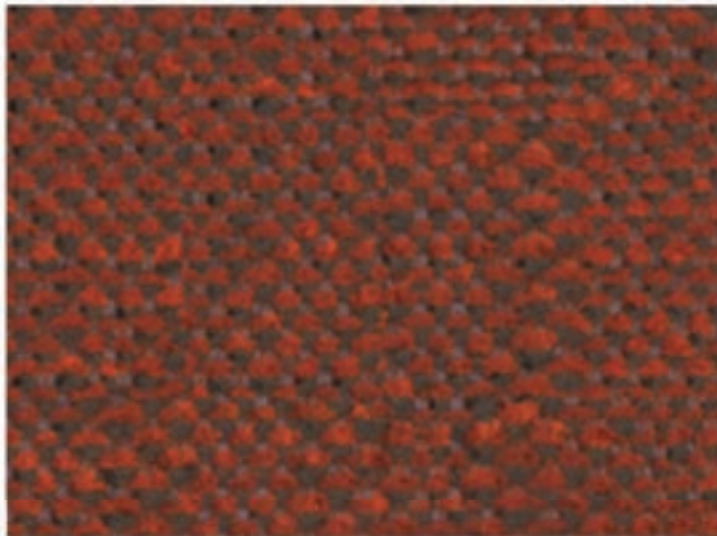
Dolphin



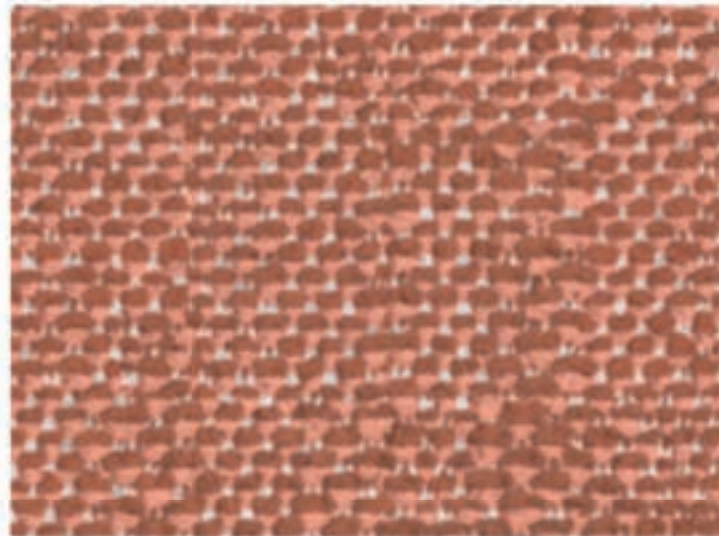
Lomond



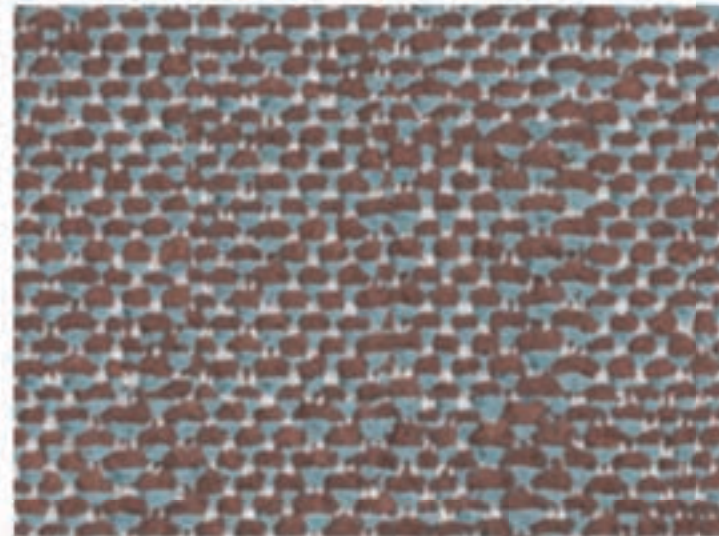
Austen



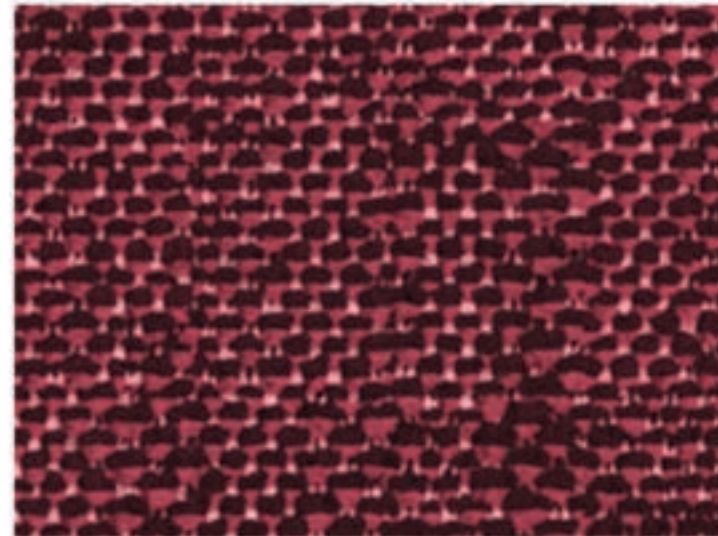
Pitlochry



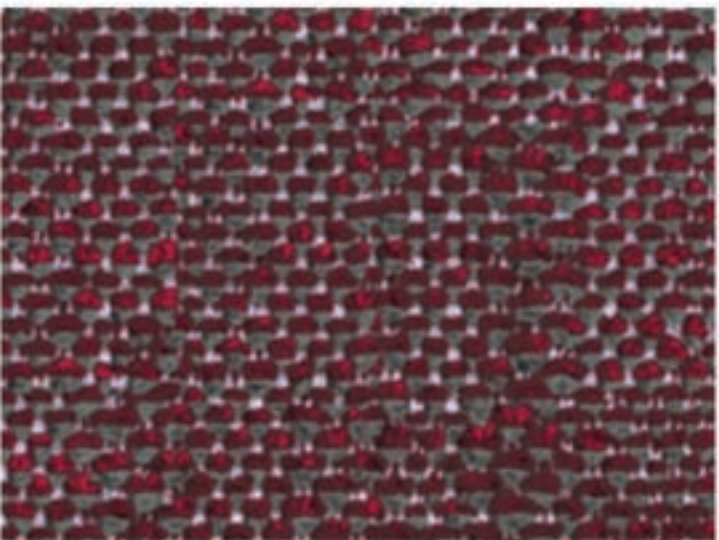
Maree



Denny



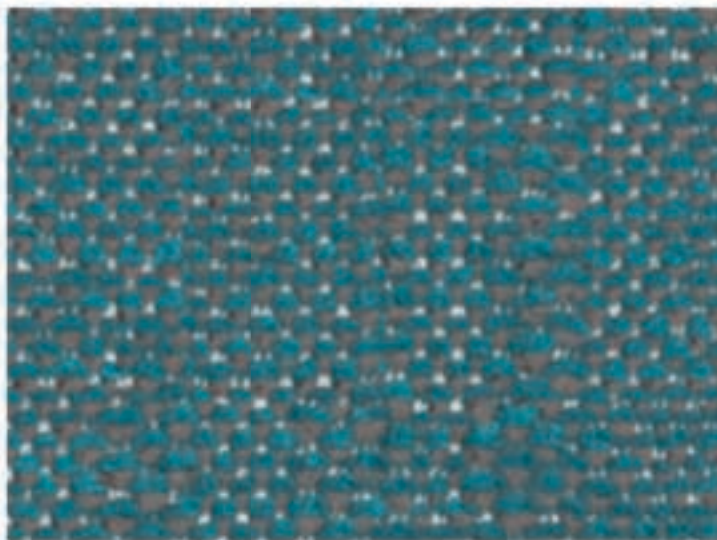
Tummel



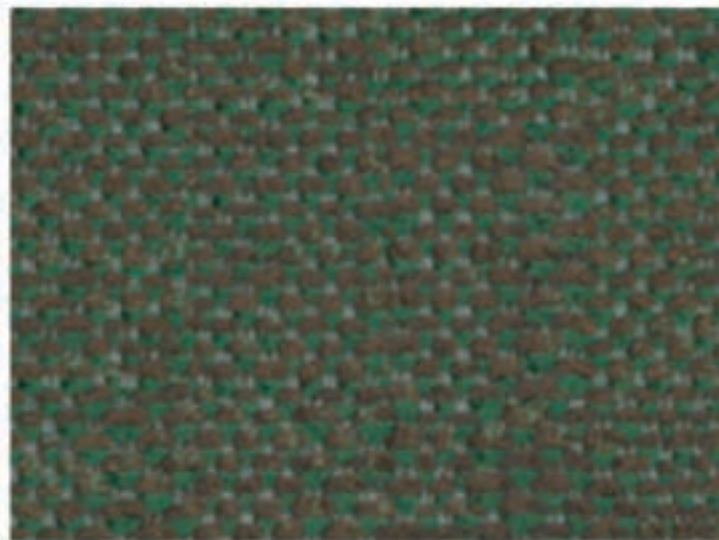
Lossie



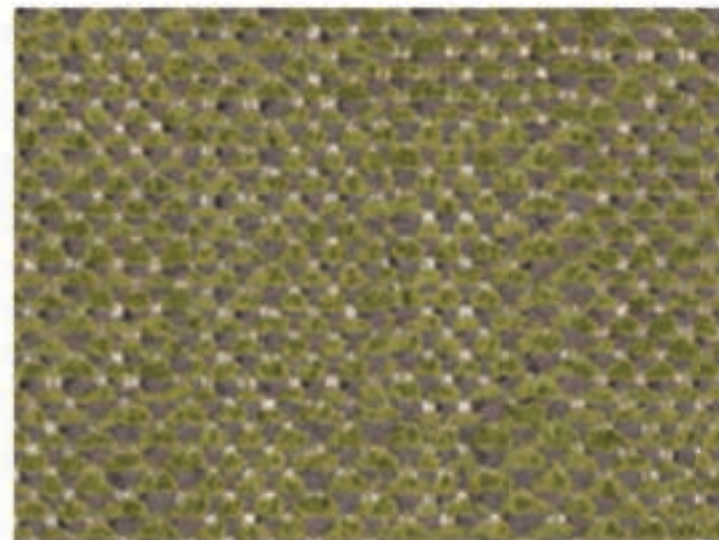
Adriatic



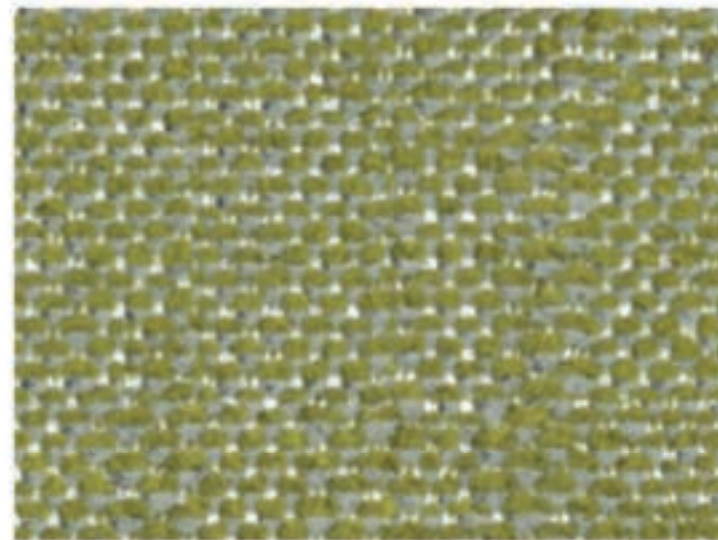
Inverness



Carron



Staffa



Fair Isle

FUGA

By Vescom



Caution: the displayed colours, due to technical matters, are approximate and may differ from the original

FABRIC TYPE	COMPOSITION	DURABILITY	LIGHTFASTNESS	PILLING	FIRE TESTS
Chenille	79% Recycled Polyester FR 21% Polyester FR	70,000 Martindale	6 - 7	4 - 5	EN 1021/1-2, Pass; BS 5852, Crib 5; NF P 92/503-507 or NF D 60-013, M1 DIN 4102, B1 Cal TB 117-2013, section 1, Pass; IMO 2010 FTP part 8, Pass; NFPA 260, Class 1



Milk



Cream



Warm Grey



Sand



Camel



Taupe



Mink



Ebony



Mostaza



Masai



Copper



Rust



Mauve



Marsala



Red



Bourdeaux



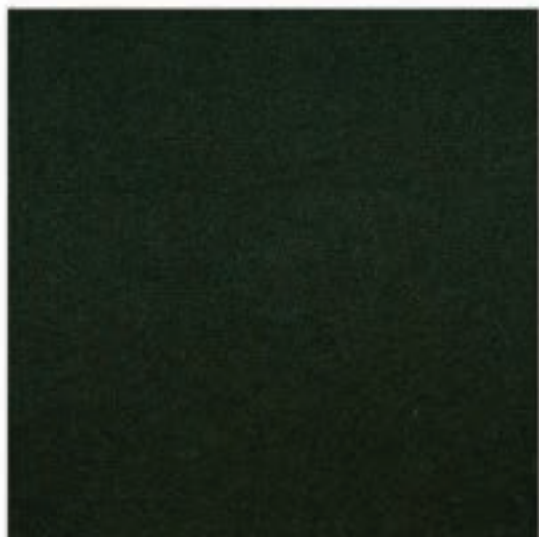
Cement



Olive



Forest



Emerald



Steel Blue



Mid Grey



Navy



Black

HARALD

FABRIC TYPE	COMPOSITION	DURABILITY	LIGHTFASTNESS	PILLING	FEATURES	FIRE TESTS
Velvet - Soft Sheen	100% Cotton	50,000 Martindale	3	5	Liquid Repellent	BS 5852 part 1 - Cigarette Test PASS EN 1021-1 - Cigarette Test PASS CA Tech. Bull. 117:2013 / NFPA 260 - Cigarette Test PASS

Caution: the displayed colours, due to technical matters, are approximate and may differ from the original



Pearl



Sand



Toffee



Truffle



Coral



Brick



Gold



Cuoio



Terra



Chocolate



Moss



Emerald



Forest



Ash



Black

MACAU

FABRIC TYPE	COMPOSITION	DURABILITY	LIGHTFASTNESS	PILLING	FEATURES	FIRE TESTS
Velvet - Soft Sheen	100% Polyester	90,000 Martindale	5	4 - 5	Anti-Stain Pet Friendly	BS 5852 part 1 - Cigarette Test PASS EN 1021-1 - Cigarette Test PASS CA Tech. Bull. 117:2013 / NFPA 260 - Cigarette Test PASS



BLUEWORLD[®]
HUMAN CARE TECHNOLOGY



STANDARD
100
9342CIT
CITEVE

Caution: the displayed colours, due to technical matters, are approximate and may differ from the original



White



Beige



Taupe



Lilac



Cement



Sand



Ash



Dark Brown



Nude



Yellow



Cognac



Terra



Trufa



Red



Elephant



Mouse



Water Green



Pistachio



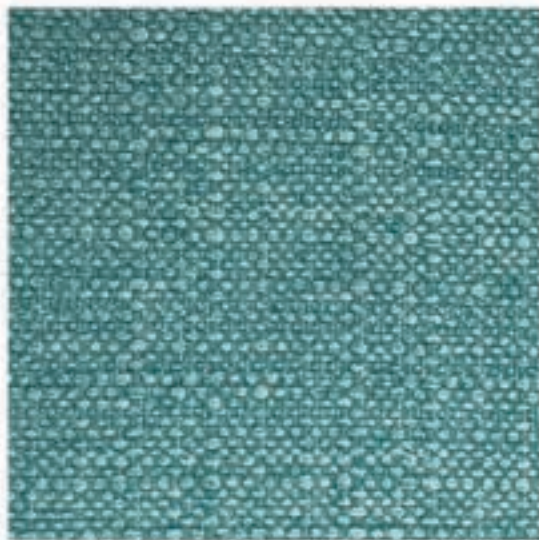
Bamboo



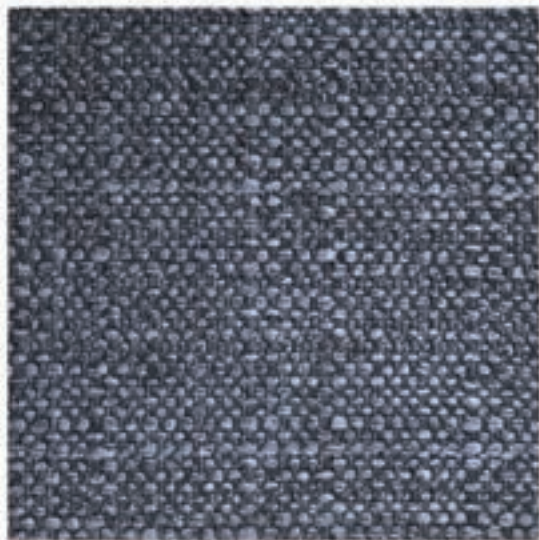
Forest



Sky



Turquoise



Ocean



Black

MADEIRA

FABRIC TYPE	COMPOSITION	DURABILITY	LIGHTFASTNESS	PILLING	FIRE TESTS
Textured Flat Weave	100% Polyester	50,000 Martindale	4	5	BS 5852 part 1 - Cigarette Test PASS EN 1021-1 - Cigarette Test PASS CA Tech. Bull. 117:2013 / NFPA 260 - Cigarette Test PASS



BLUEWORLD[®]
HUMAN CARE TECHNOLOGY



STANDARD
100
9342CIT
CITEVE

Caution: the displayed colours, due to technical matters, are approximate and may differ from the original



Pearl



Ivory



Toffee



Pink



Marsala



Deep Purple



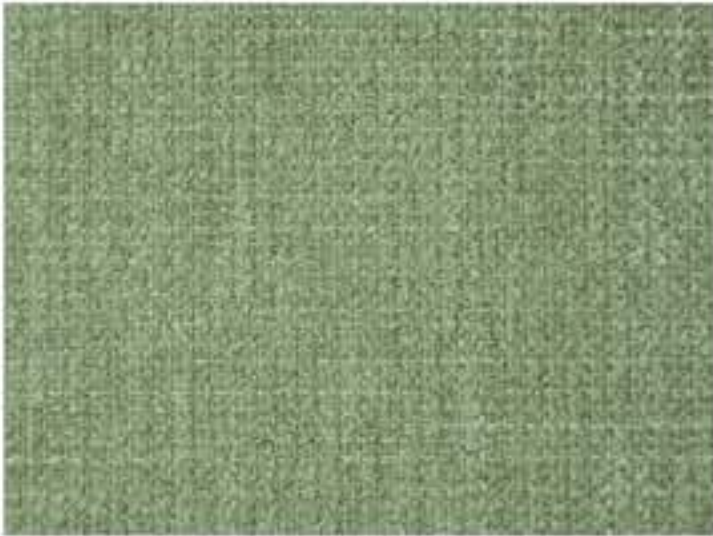
Mostaza



Mud



Truffle



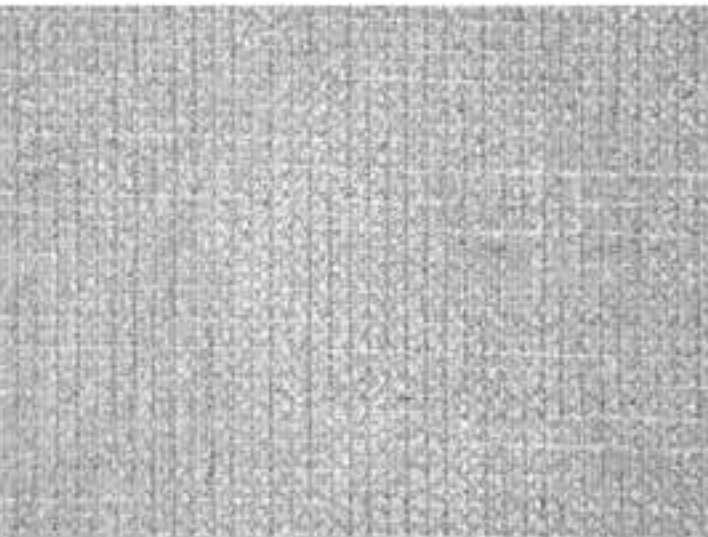
Green



Forest



Chocolate



Cement



Fog



Ocean



Taupe



Anthracite



Black

TRIBU

FABRIC TYPE	COMPOSITION	DURABILITY	LIGHTFASTNESS	PILLING	FEATURES	FIRE TESTS
Chenille	100% Polyester	35,000 Martindale	5	4	Anti-Stain	BS 5852 part 1 - Cigarette Test PASS EN 1021-1 - Cigarette Test PASS CA Tech. Bull. 117:2013 / NFPA 260 - Cigarette Test PASS

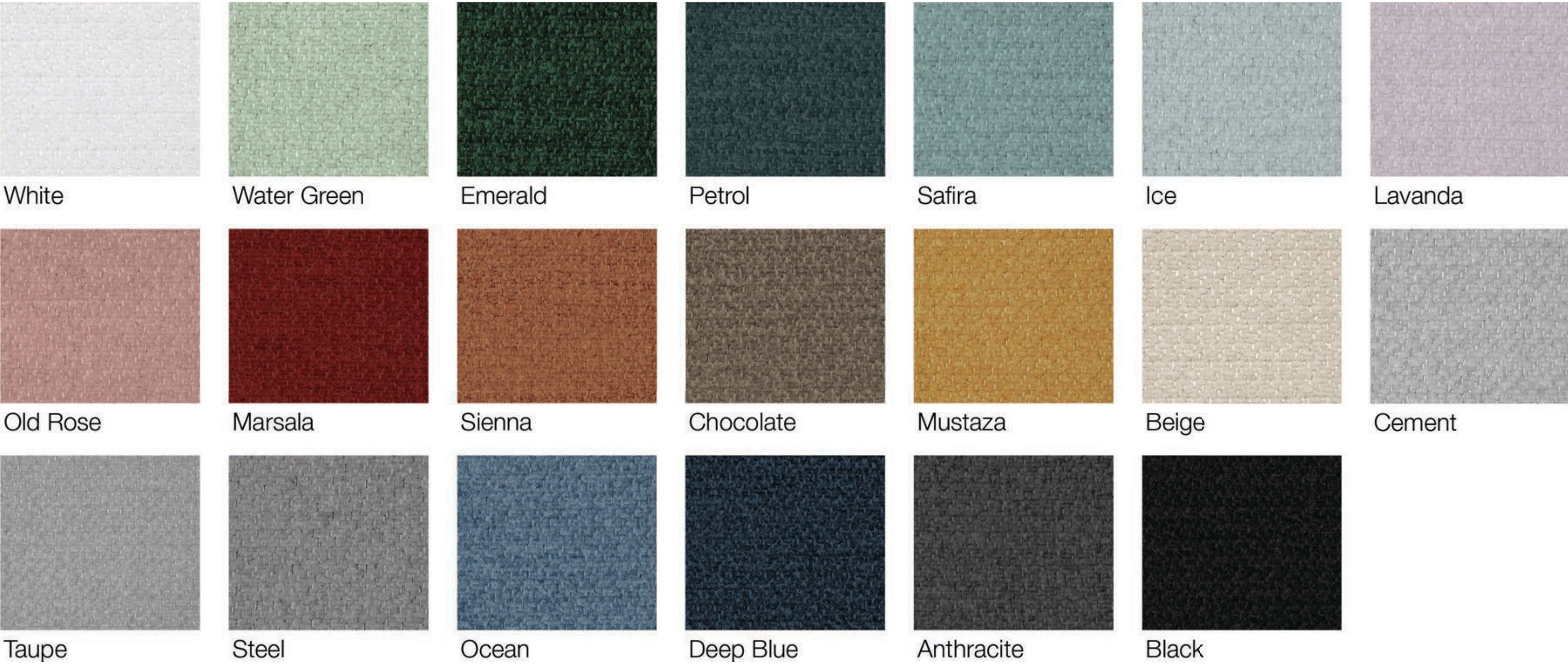


BLUEWORLD[®]
HUMAN CARE TECHNOLOGY



STANDARD
100
9342CIT
CITEVE

Caution: the displayed colours, due to technical matters, are approximate and may differ from the original



VIENNA

FABRIC TYPE	COMPOSITION	DURABILITY	LIGHTFASTNESS	PILLING	FEATURES	FIRE TESTS
Chenille	100% Polyester	65,000 Martindale	5	4	Anti-Stain	BS 5852 part 1 - Cigarette Test PASS EN 1021-1 - Cigarette Test PASS CA Tech. Bull. 117:2013 / NFPA 260 - Cigarette Test PASS



Caution: the displayed colours, due to technical matters, are approximate and may differ from the original



Cream



Silver



Almond



Elephant



Ebony



Taupe



Camel



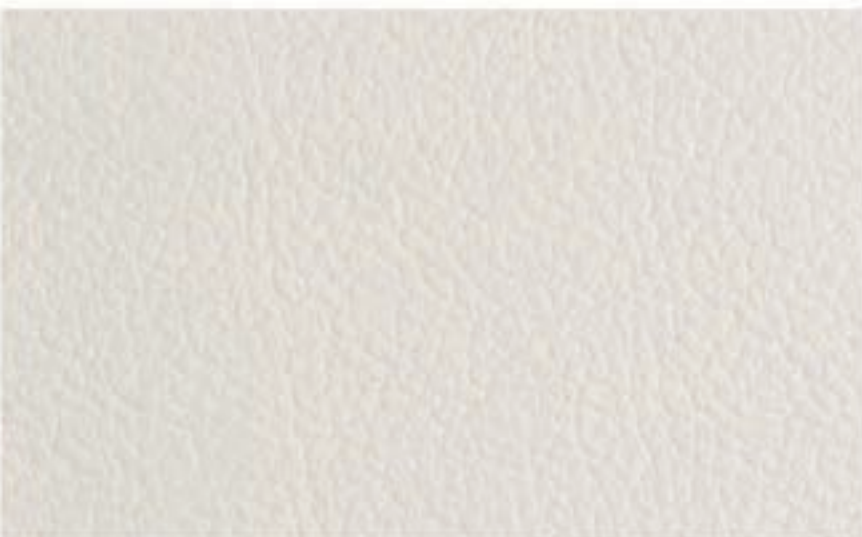
Tabacco



Avocat



Forest



Milk



Cement



Ash



Anthracite



Black

FLORIDA

LEATHER TYPE	AVERAGE SKIN THICKNESS	RAWHIDE	PREPARATION	FIRE TESTS
Corrected Leather	0.8 - 1.0 mm	Brazilian Bovine	Corrected and Embossed Grain Protective Top Coat, Soft Handle and Silky Matte Finish	BS 5852:1979 BS EN 1021-1-2:2006

Caution: the displayed colours, due to technical matters, are approximate and may differ from the original



Sand



Lion



Camel



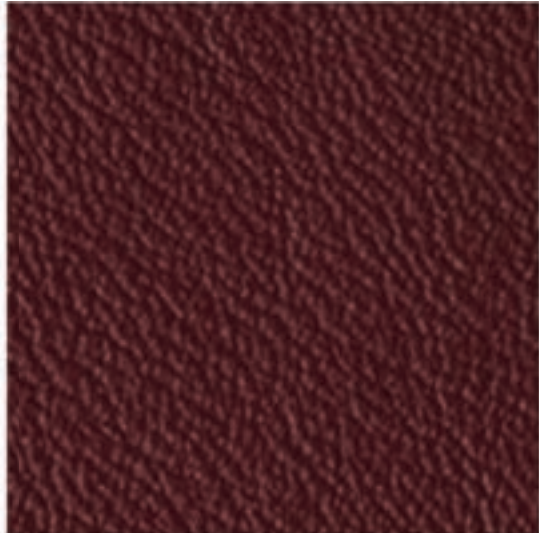
Cognac



Yam



Masai



Wine



Caribou



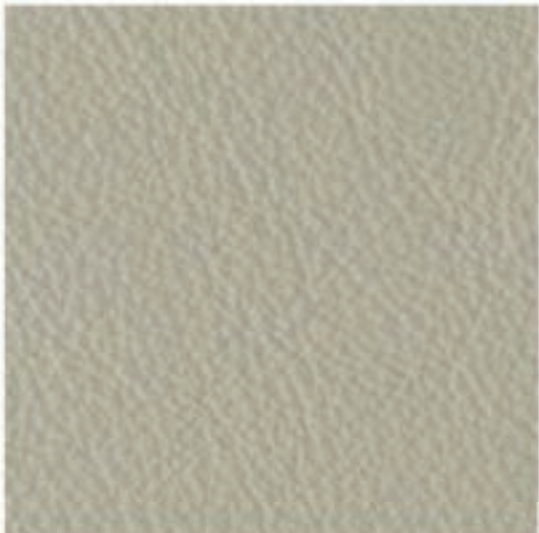
Cement



Toffee



Seapearl



Peral



Stone



Umber



Moss



Bosco



Ivory



White



Ice



Zinc



Shadow



Graphite



Gull



Black

LAGUNA

LEATHER TYPE	AVERAGE SKIN THICKNESS	RAWHIDE	PREPARATION	FIRE TESTS
Aniline Leather	0.9 - 1.1 mm	European Bovine	Lightly Buffed Natural Grain Transparent Protective Coat, Soft Waxy Feel, Semi-Matte Finish	CAL TB-117 (2013, Sec.1) BS 5852:1979 BS EN 1021-1-2:2006

Caution: the displayed colours, due to technical matters, are approximate and may differ from the original



Pearl



Toffee



Camel



Caramello



Mostaza



Marsala



Nude



Ivory



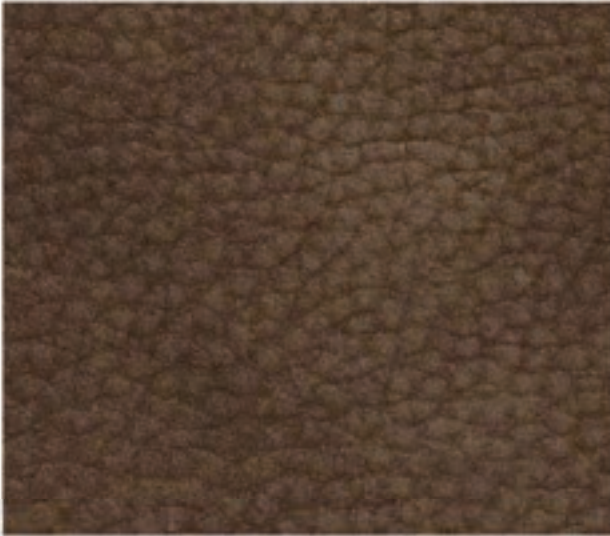
Cream



Khaki



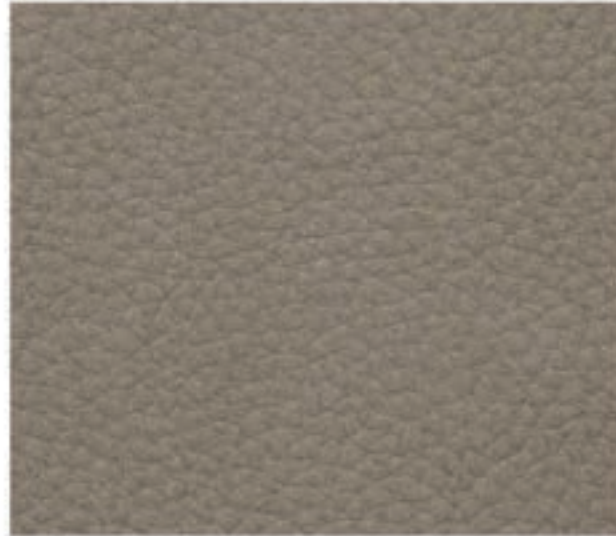
Taupe



Chocolate



Moss



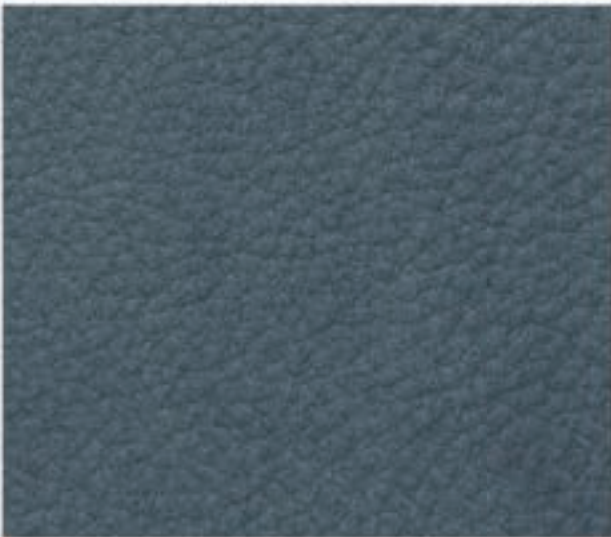
Elephant



Aquamarine



Emerald



Shark



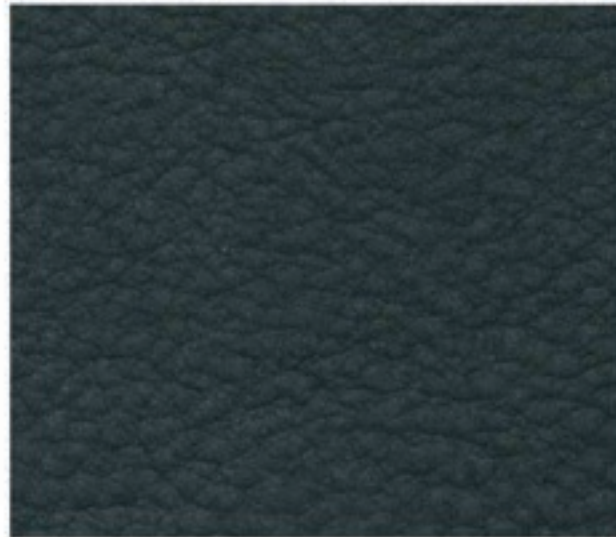
Ocean



Ash



Anthracite



Black

COLUMBIA

LEATHER TYPE	AVERAGE SKIN THICKNESS	RAWHIDE	PREPARATION	FIRE TESTS
Nubuck Leather	1.2 - 1.4 mm	European Bovine	Natural Grain Aniline Dyed, Suede Look, Liquid Repellent	BS 5852:1979 BS EN 1021-1-2:2006

Caution: the displayed colours, due to technical matters, are approximate and may differ from the original

Not all available fabrics and colours are listed on the site. Please contact us if you would like more information on available fabrics and colours.

Email: info@nue-modern.com

www.nue-modern.com