

UPHOLSTERY OPTIONS

MILANO SOFA



Pearl



Beige



Toffee



Trufa



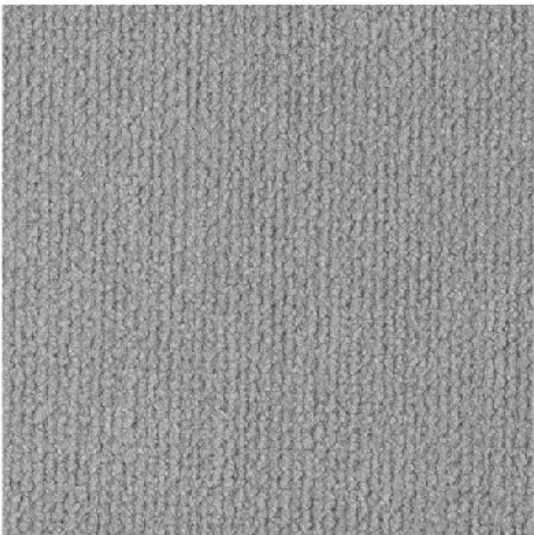
Fango



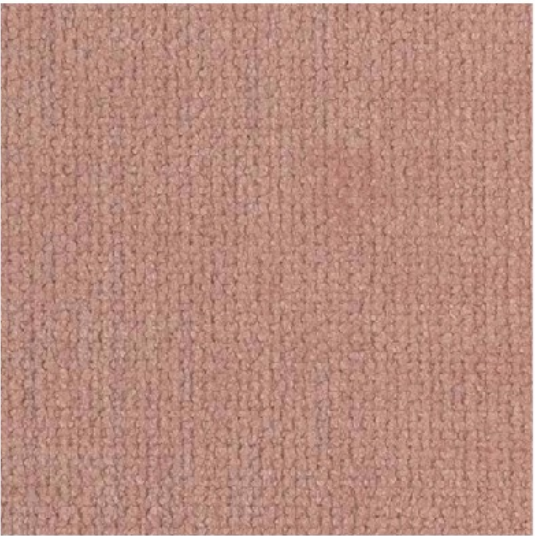
Mouse



Yellow



Light Grey



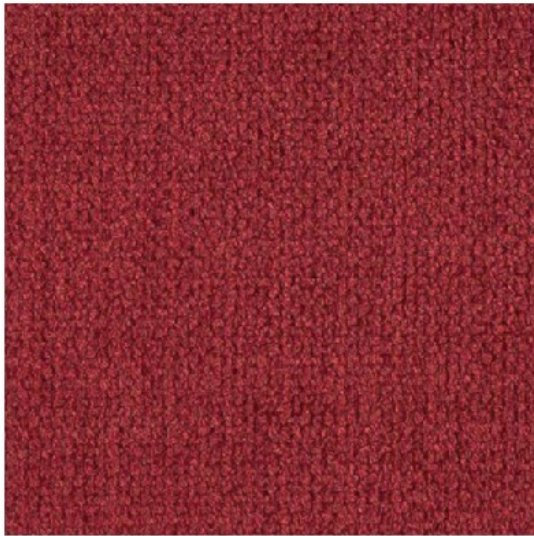
Pink



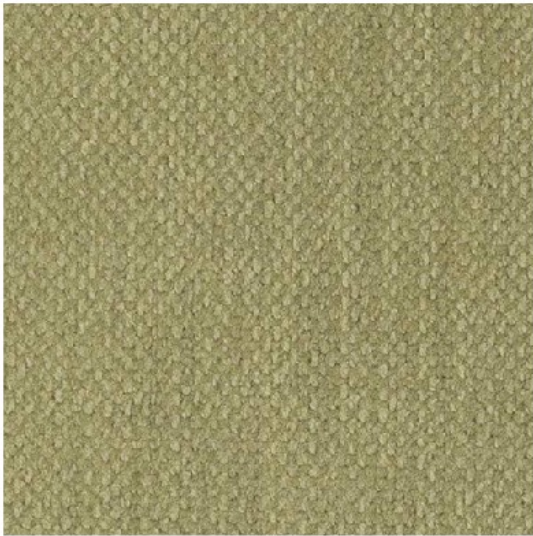
Lavanda



Teja



Bordeaux



Citric



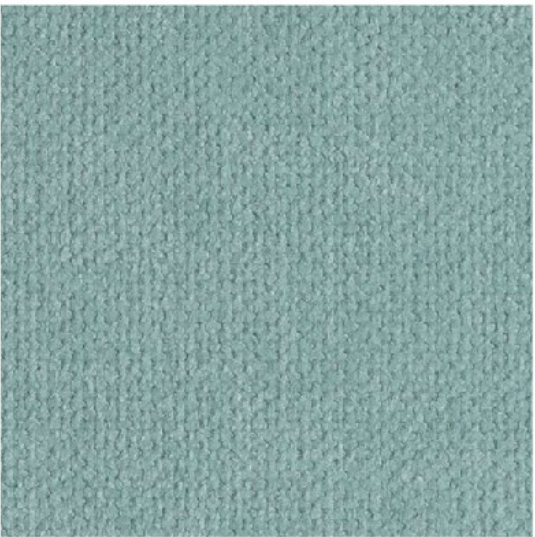
Green



Forest



Turquoise



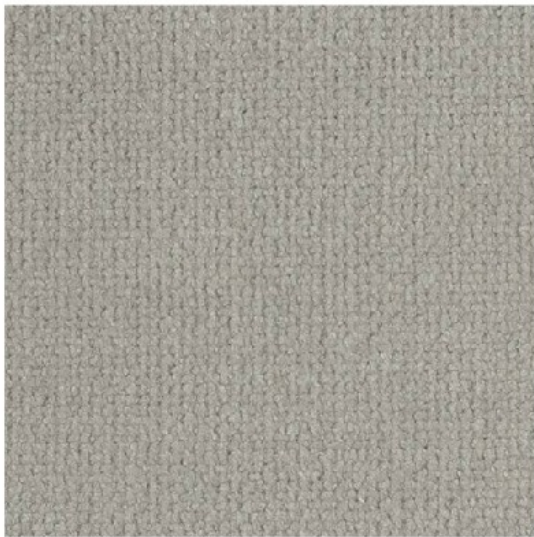
Sky



Jeans



White



Fog



Taupe



Elephant



Chocolate



Anthracite

APOLLO



BLUEWORLD®
HUMAN CARE TECHNOLOGY



STANDARD
100
9342CIT
CITEVE

FABRIC TYPE	COMPOSITION	DURABILITY	LIGHTFASTNESS	PILLING	FEATURES	FIRE TESTS
Chenille	100% Polyester	100,000 Martindale	4 - 5	4 - 5	Anti-Stain Liquid Repellent	BS 5852 part 1 - Cigarette Test PASS EN 1021-1 - Cigarette Test PASS CA Tech. Bull. 117:2013 / NFPA 260 - Cigarette Test PASS

Caution: the displayed colours, due to technical matters, are approximate and may differ from original



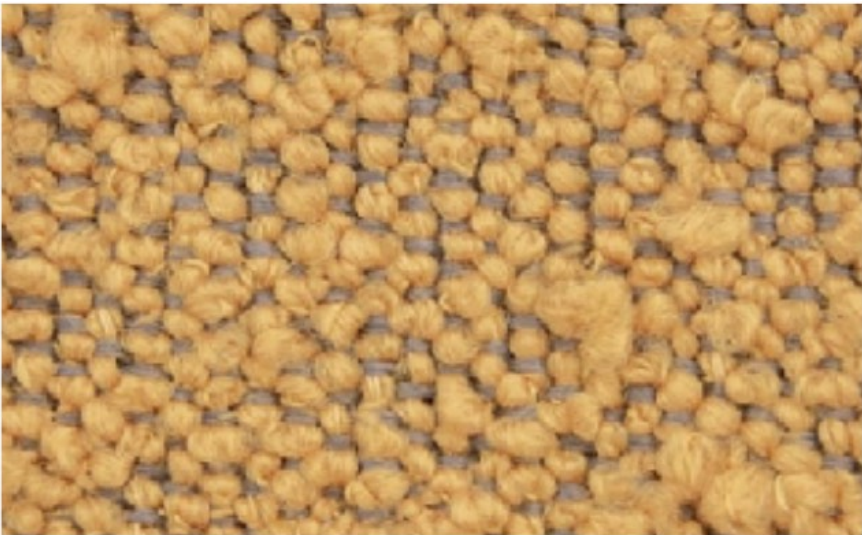
Nata



Pearl



Champagne



Mostaza



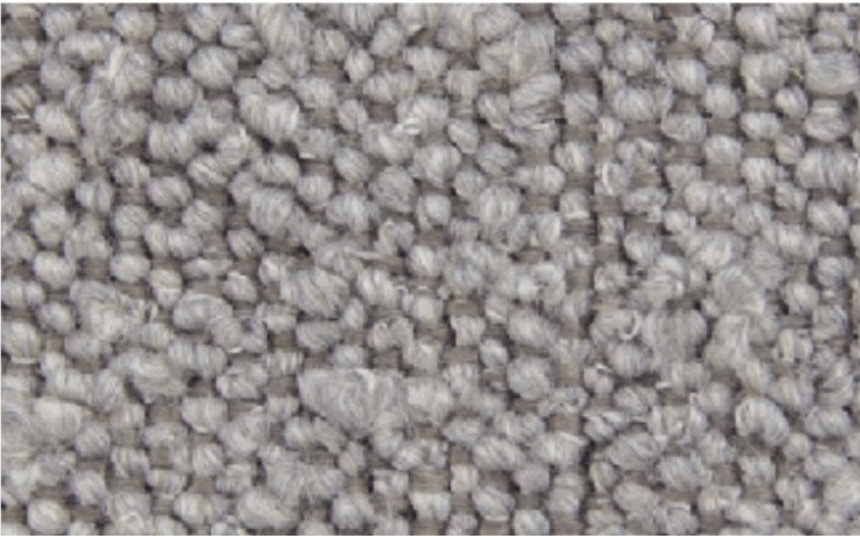
Brick



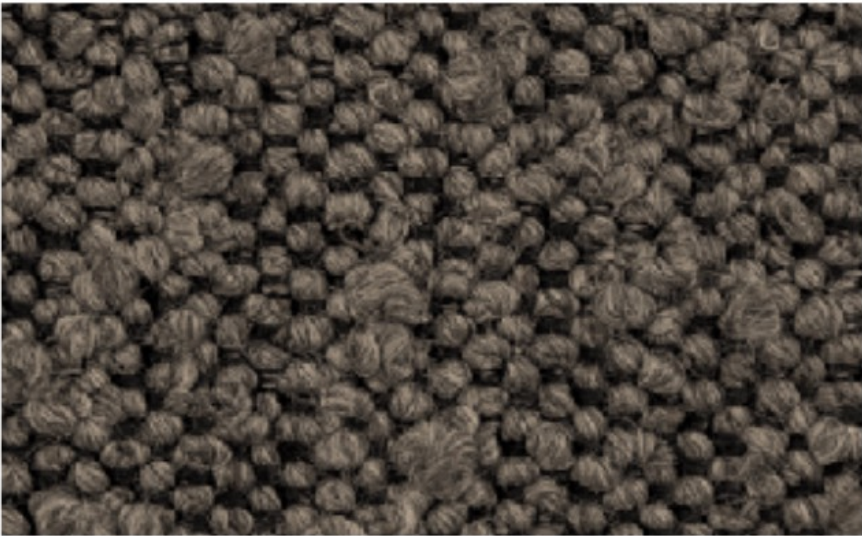
Pink



Toffee



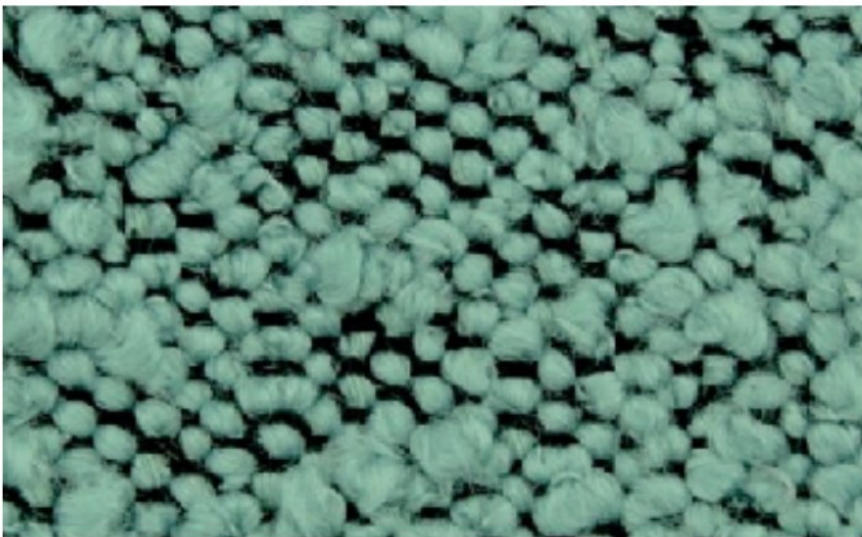
Taupe



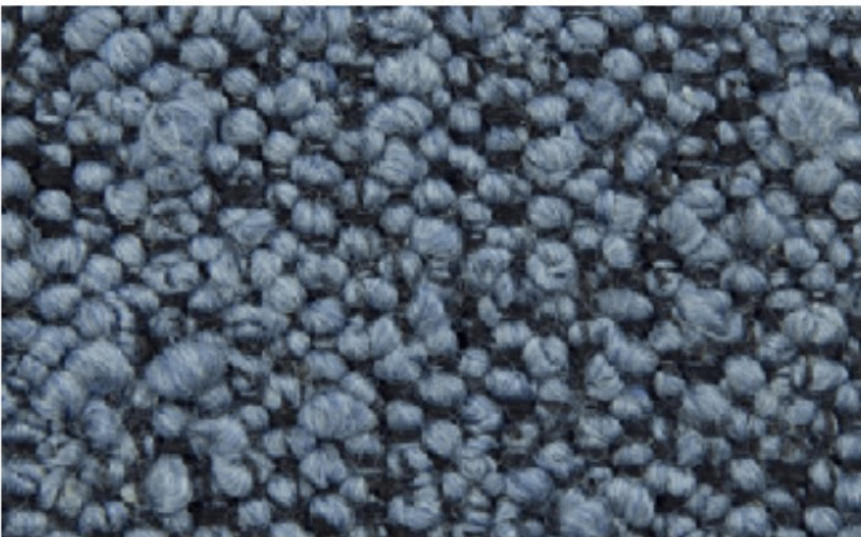
Mouse



Olive Green



Safira



Atlantic



Graphite



Black

ASCOT



STANDARD
100
9342CIT
CITEVE

FABRIC TYPE	COMPOSITION	DURABILITY	LIGHTFASTNESS	PILLING	FIRE TESTS
Bouclé	100% Polyester	80,000 Martindale	5	4	BS 5852 part 1 - Cigarette Test PASS EN 1021-1 - Cigarette Test PASS CA Tech. Bull. 117:2013 / NFPA 260 - Cigarette Test PASS

Caution: the displayed colours, due to technical matters, are approximate and may differ from original



BALTIC

FABRIC TYPE	COMPOSITION	DURABILITY	LIGHTFASTNESS	PILLING	FEATURES	FIRE TESTS
Chenille	100% Polyester	35,000 Martindale	5	4	Anti-Stain	BS 5852 part 1 - Cigarette Test PASS EN 1021-1 - Cigarette Test PASS CA Tech. Bull. 117:2013 / NFPA 260 - Cigarette Test PASS



Caution: the displayed colours, due to technical matters, are approximate and may differ from original



White



Sand



Pale Rose



Paprika



Cinnamon



Aqua



Pine



Hunter



Dark Forest



Fossil



Pebble



Dove



Stone



Shadow



Charcoal

BOUCLÉ

FABRIC TYPE

Bouclé

COMPOSITION

100% Polyester

DURABILITY

80,000 Martindale

LIGHTFASTNESS

3

PILLING

4

Caution: the displayed colours, due to technical matters, are approximate and may differ from original



CASINO

FABRIC TYPE	COMPOSITION	DURABILITY	LIGHTFASTNESS	PILLING	FEATURES	FIRE TESTS
Velvet - Matte Finish	100% Polyester	100,000 Martindale	4 - 5	4 - 5	Anti-Stain Pet Friendly	BS 5852 part 1 - Cigarette Test PASS EN 1021-1 - Cigarette Test PASS CA Tech. Bull. 117:2013 / NFPA 260 - Cigarette Test PASS



BLUEWORLD®
HUMAN CARE TECHNOLOGY

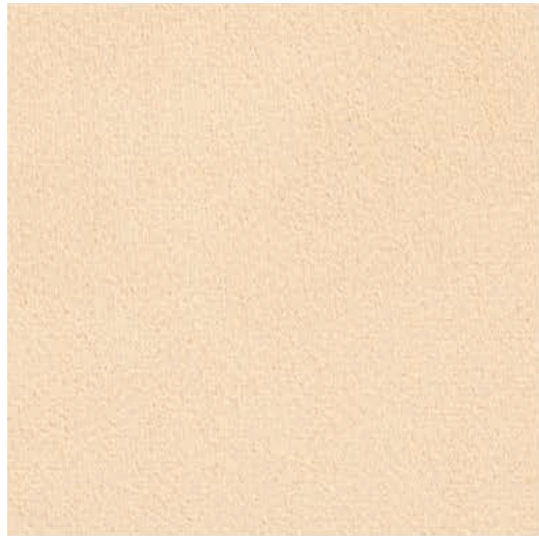


STANDARD
100
9342CIT
CITEVE

Caution: the displayed colours, due to technical matters, are approximate and may differ from original



Milk



Cream



Warm Grey



Sand



Camel



Taupe



Mink



Ebony



Mostaza



Masai



Copper



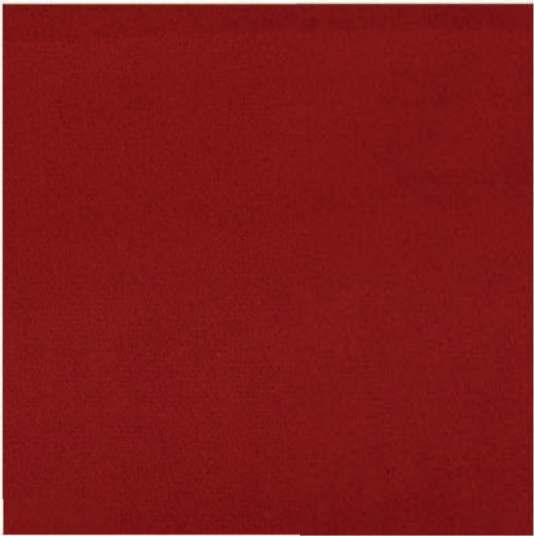
Rust



Mauve



Marsala



Red



Bourdeaux



Cement



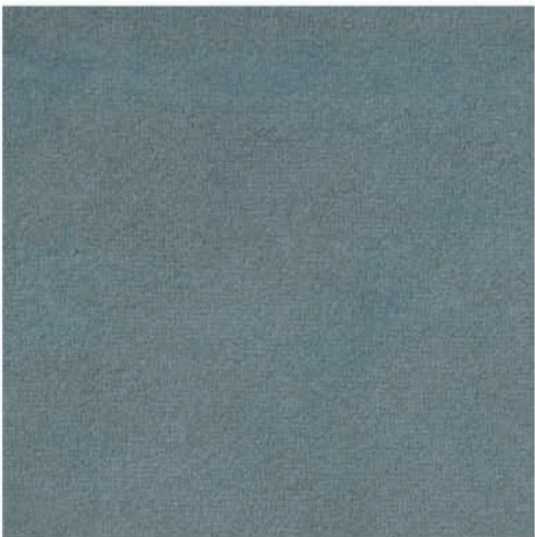
Olive



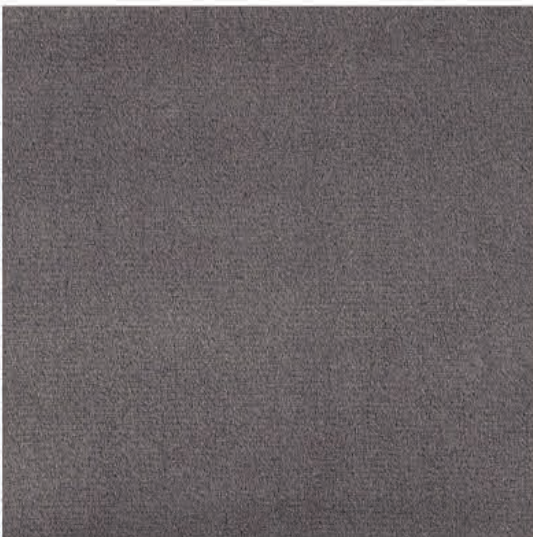
Forest



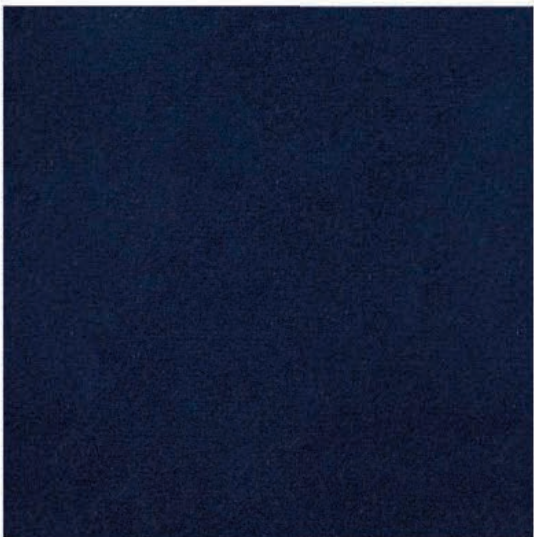
Emerald



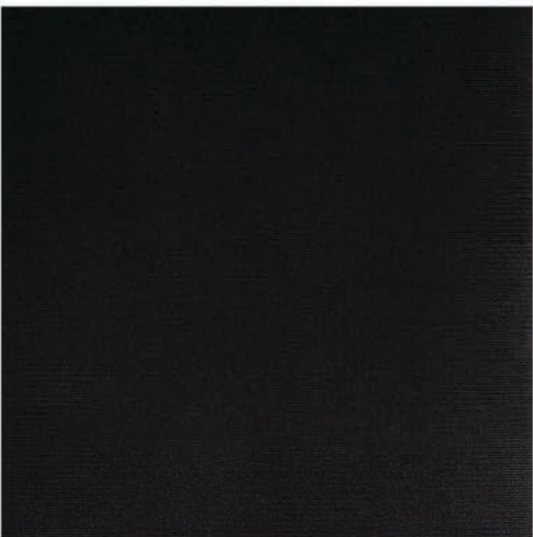
Steel Blue



Mid Grey



Navy

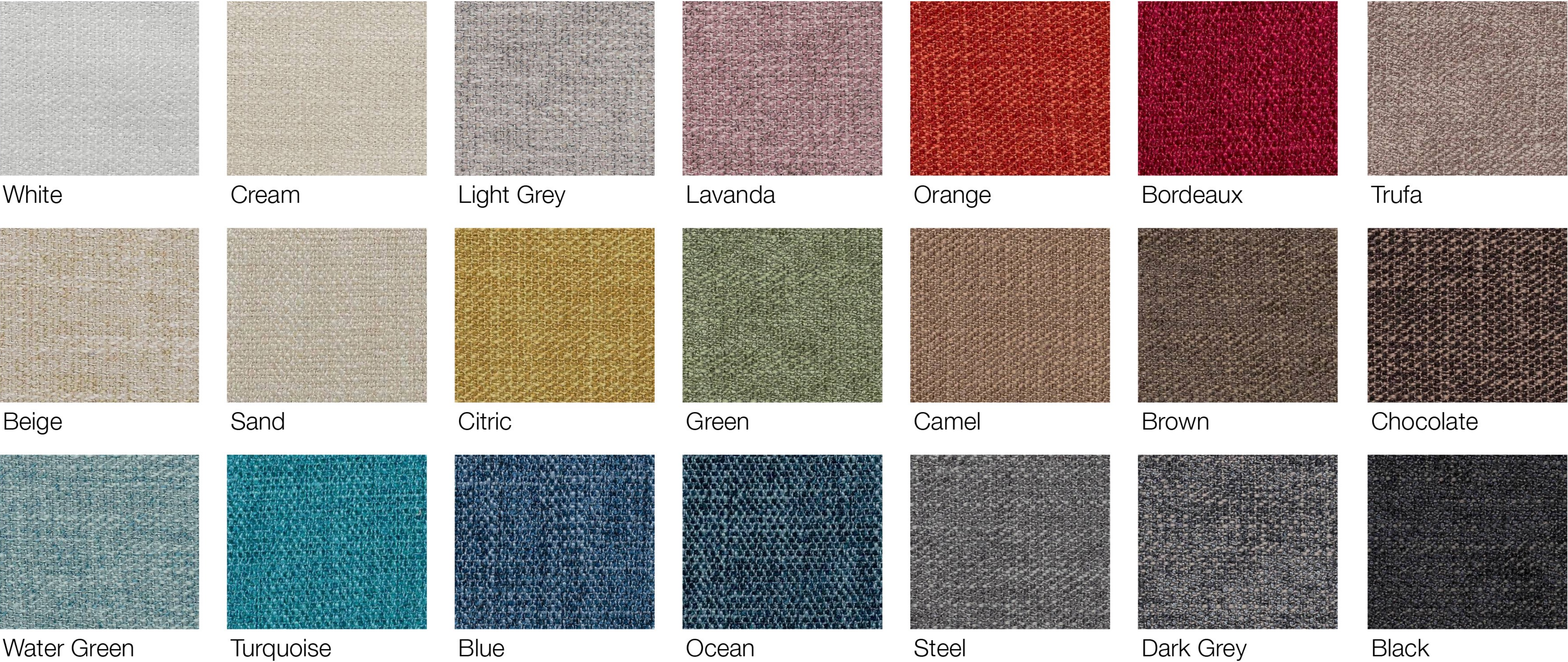


Black

HARALD

FABRIC TYPE	COMPOSITION	DURABILITY	LIGHTFASTNESS	PILLING	FEATURES	FIRE TESTS
Velvet - Soft Sheen	100% Cotton	50,000 Martindale	3	5	Liquid Repellent	BS 5852 part 1 - Cigarette Test PASS EN 1021-1 - Cigarette Test PASS CA Tech. Bull. 117:2013 / NFPA 260 - Cigarette Test PASS

Caution: the displayed colours, due to technical matters, are approximate and may differ from original



LONDON

FABRIC TYPE	COMPOSITION	DURABILITY	LIGHTFASTNESS	PILLING	FIRE TESTS
Flatweave	100% Polyester	80,000 Martindale	5	4	BS 5852 part 1 - Cigarette Test PASS EN 1021-1 - Cigarette Test PASS CA Tech. Bull. 117:2013 / NFPA 260 - Cigarette Test PASS



Caution: the displayed colours, due to technical matters, are approximate and may differ from original



Pearl



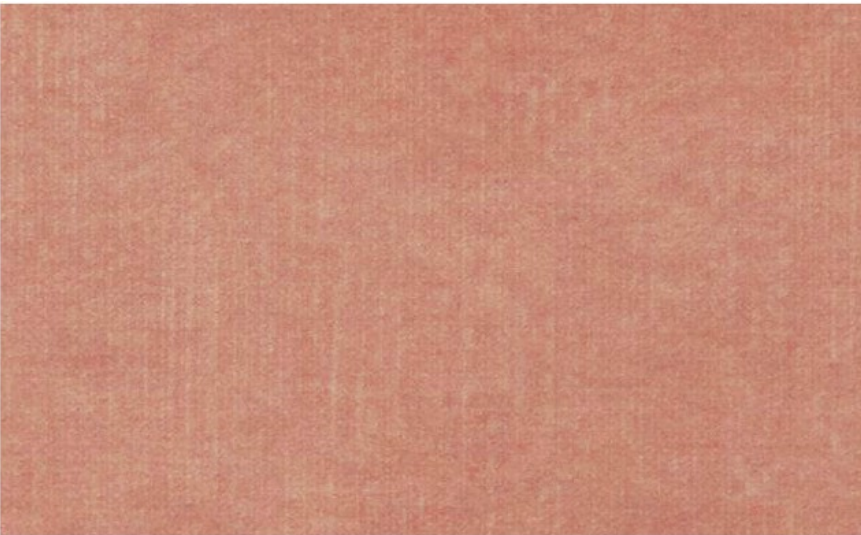
Sand



Toffee



Truffle



Coral



Brick



Gold



Cuoio



Terra



Chocolate



Moss



Emerald



Forest



Ash



Black

MACAU

FABRIC TYPE	COMPOSITION	DURABILITY	LIGHTFASTNESS	PILLING	FEATURES	FIRE TESTS
Velvet - Soft Sheen	100% Polyester	90,000 Martindale	5	4 - 5	Anti-Stain Pet Friendly	BS 5852 part 1 - Cigarette Test PASS EN 1021-1 - Cigarette Test PASS CA Tech. Bull. 117:2013 / NFPA 260 - Cigarette Test PASS



BLUEWORLD®
HUMAN CARE TECHNOLOGY



STANDARD
100
9342CIT
CITEVE

Caution: the displayed colours, due to technical matters, are approximate and may differ from original



White



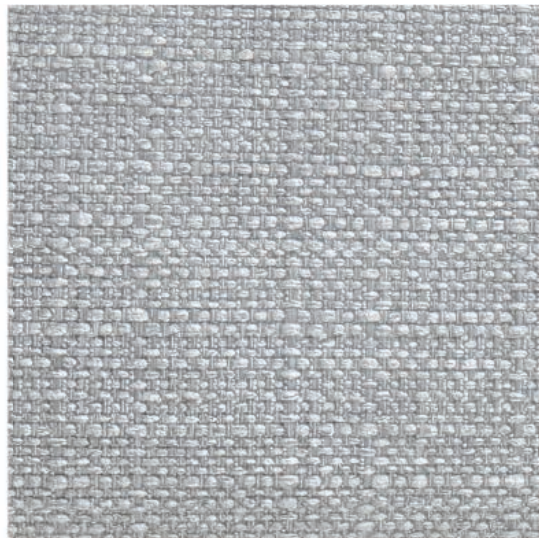
Beige



Taupe



Lilac



Cement



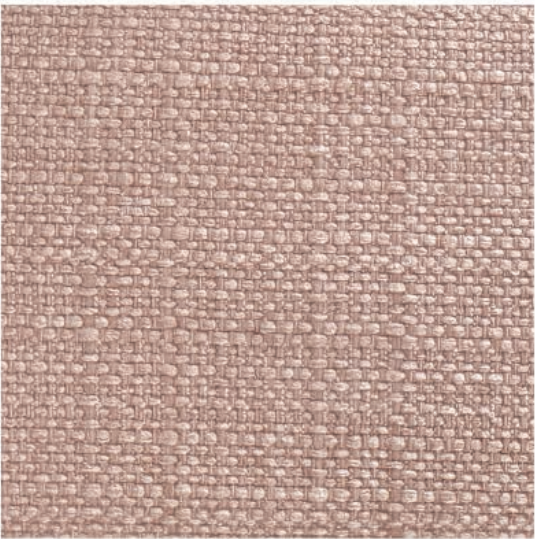
Sand



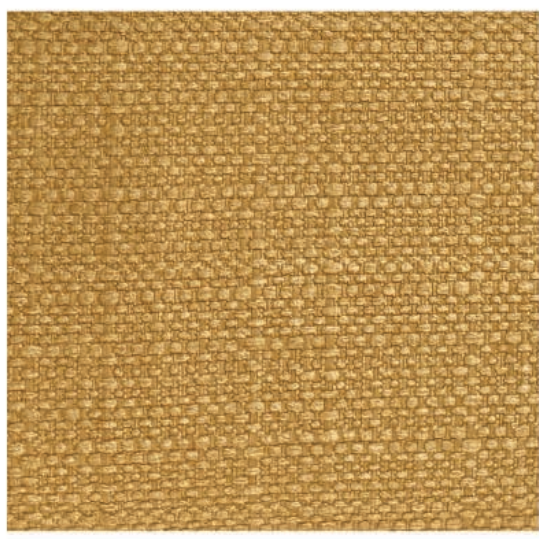
Ash



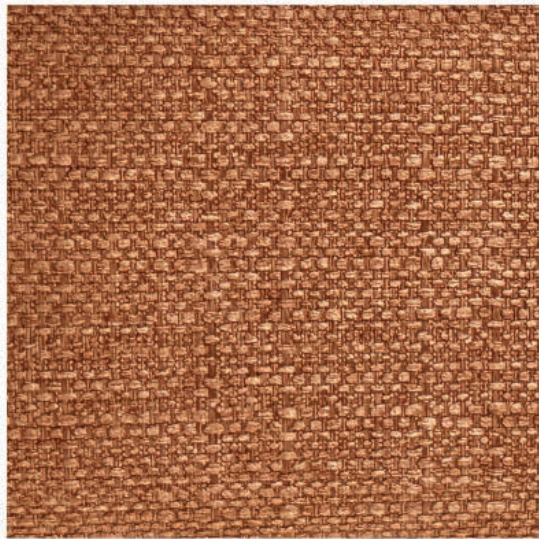
Dark Brown



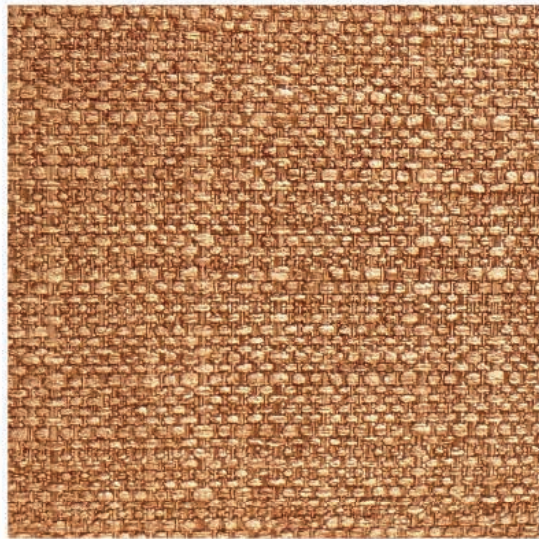
Nude



Yellow



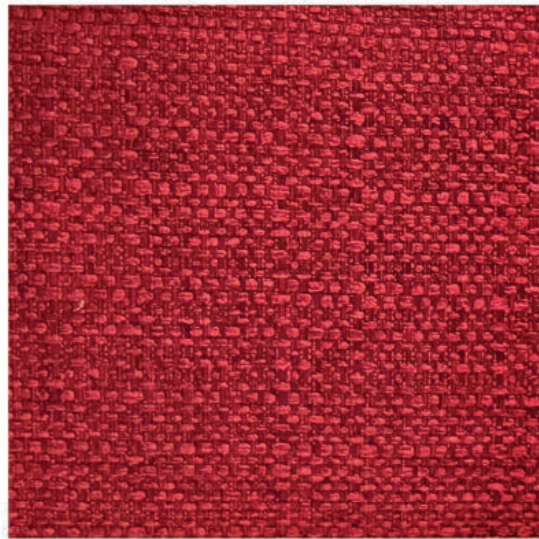
Cognac



Terra



Trufa



Red



Elephant



Mouse



Water Green



Pistachio



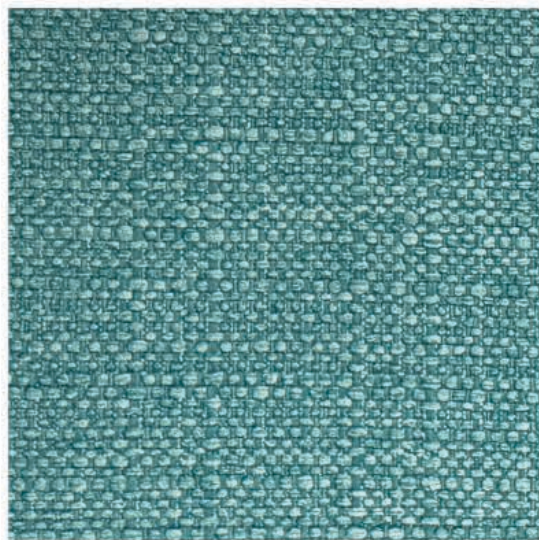
Bamboo



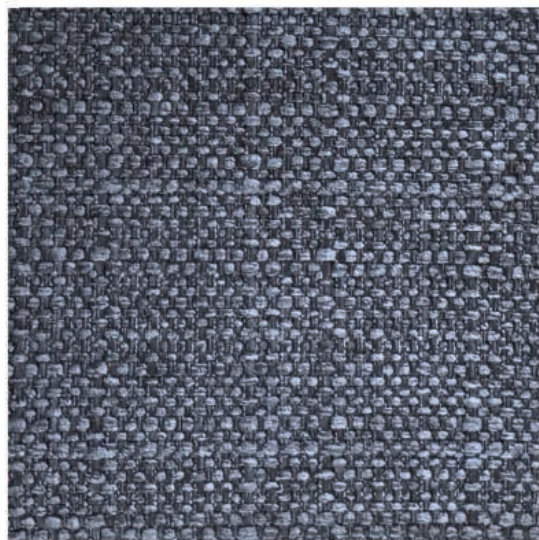
Forest



Sky



Turquoise



Ocean



Black

MADEIRA

FABRIC TYPE	COMPOSITION	DURABILITY	LIGHTFASTNESS	PILLING	FIRE TESTS
Textured Flatweave	100% Polyester	50,000 Martindale	4	5	BS 5852 part 1 - Cigarette Test PASS EN 1021-1 - Cigarette Test PASS CA Tech. Bull. 117:2013 / NFPA 260 - Cigarette Test PASS



BLUEWORLD®
HUMAN CARE TECHNOLOGY



STANDARD
100
9342CIT
CITEVE

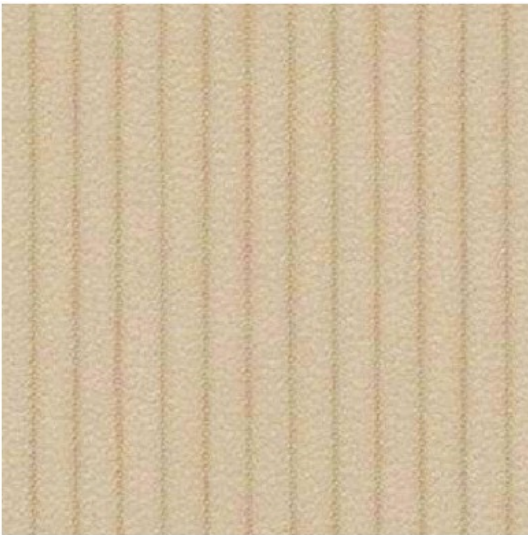
Caution: the displayed colours, due to technical matters, are approximate and may differ from original



Nata



Toffee



Sand



Truffle



Mud



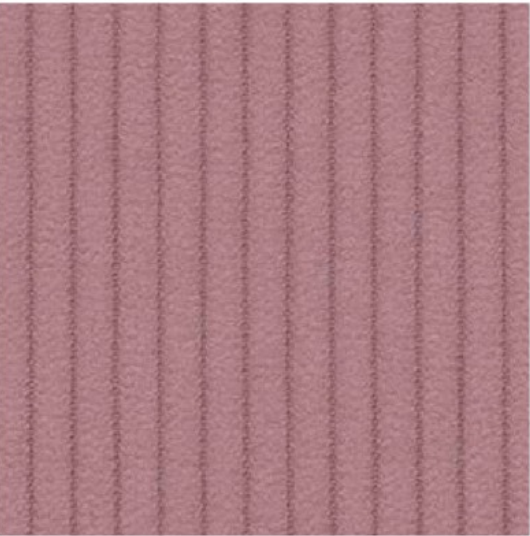
Taupe



Chocolate



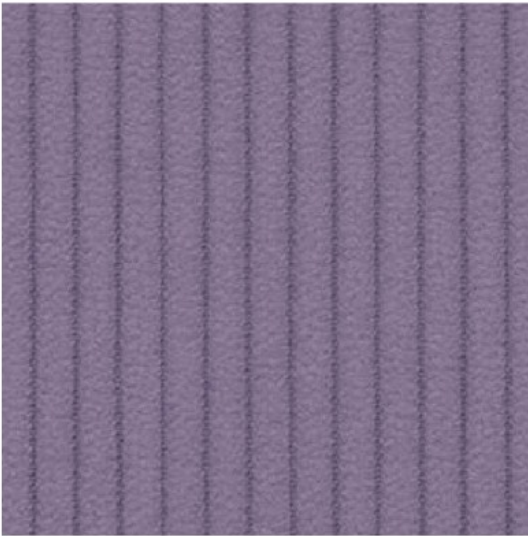
Ebony



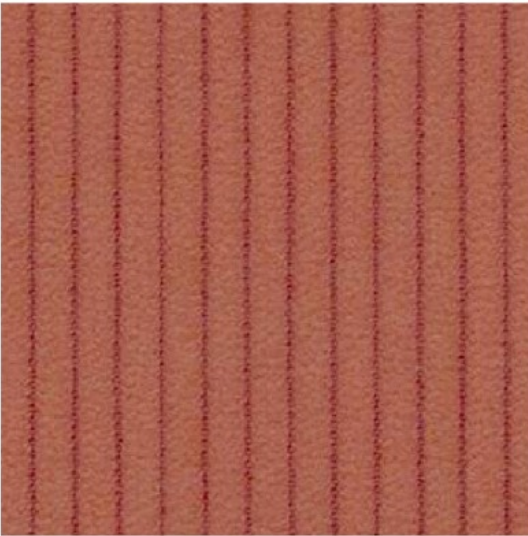
Rose



Lavanda



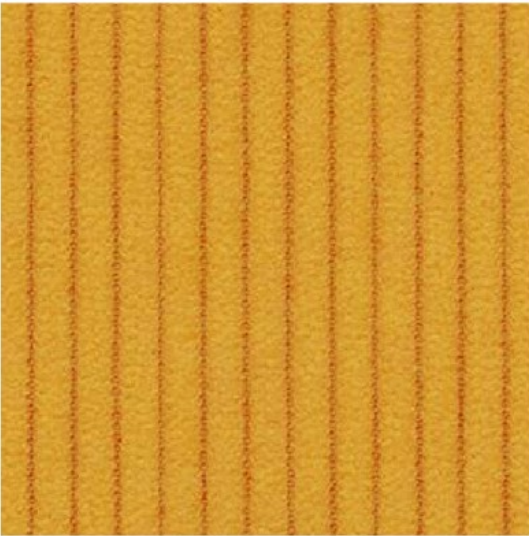
Purple



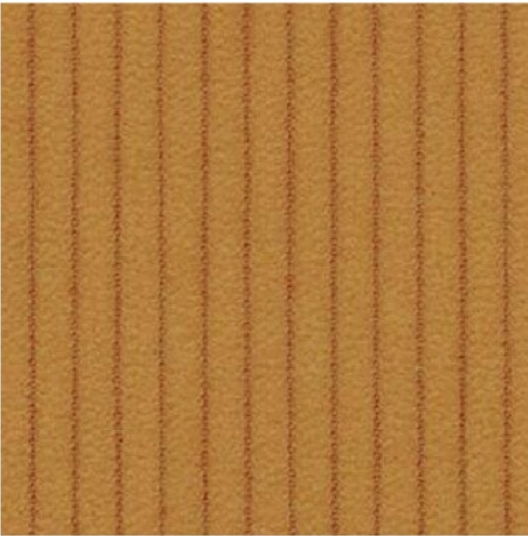
Coral



Red



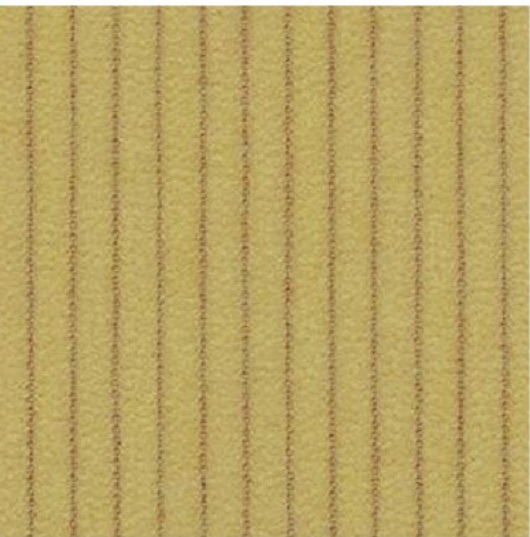
Yellow



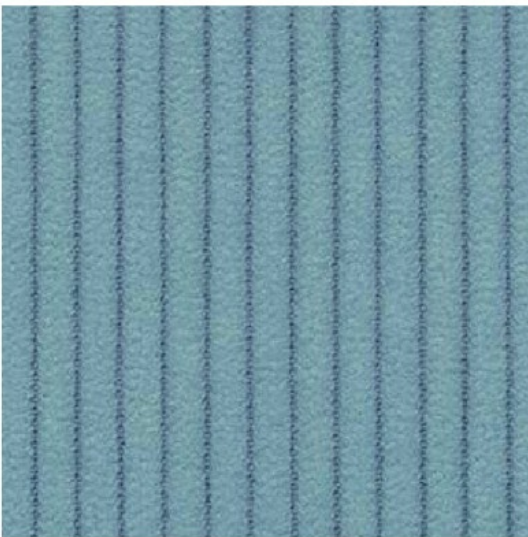
Mostaza



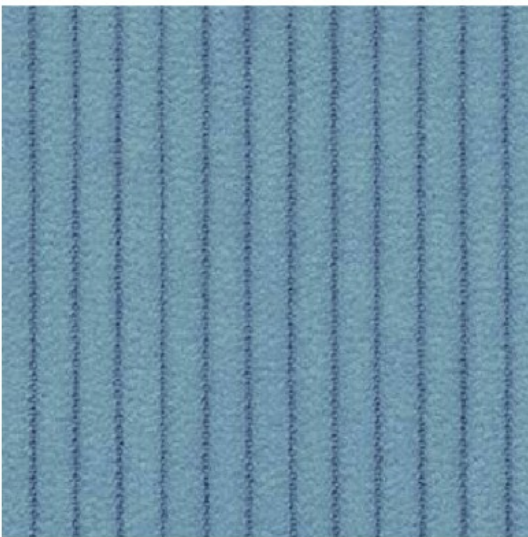
Forest



Lima



Safria



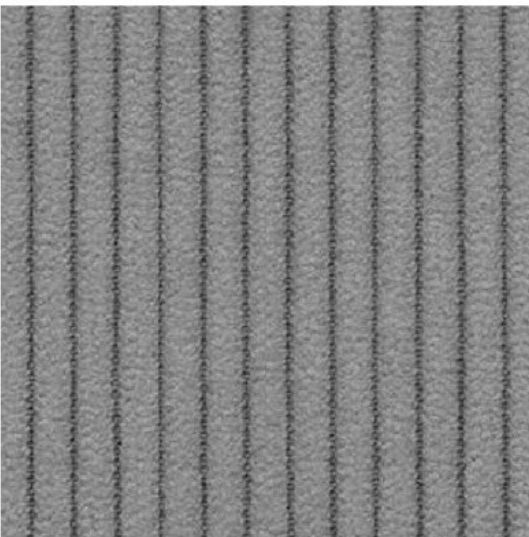
Sky



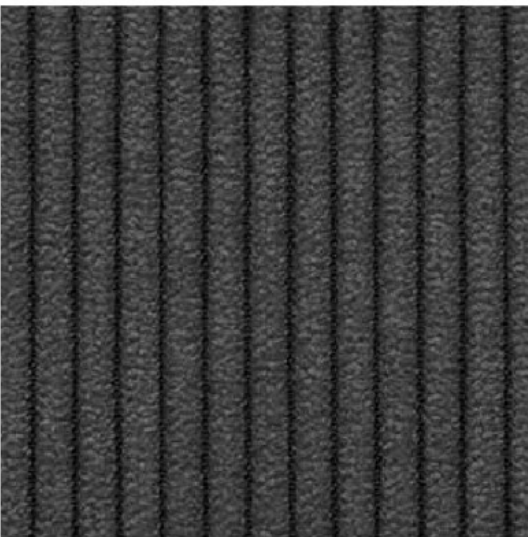
Navy



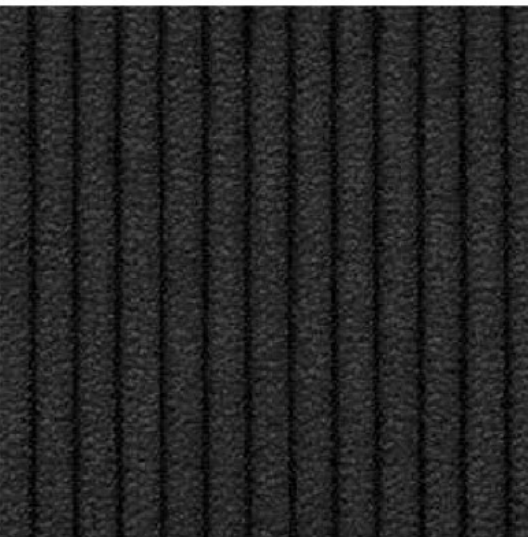
Ocean



Ash



Anthracite



Black

SCALA

FABRIC TYPE	COMPOSITION	DURABILITY	LIGHTFASTNESS	PILLING	FEATURES	FIRE TESTS
Corduroy	100% Polyester	80,000 Martindale	5	3 - 4	Anti-Stain	BS 5852 part 1 - Cigarette Test PASS EN 1021-1 - Cigarette Test PASS CA Tech. Bull. 117:2013 / NFPA 260 - Cigarette Test PASS



BLUEWORLD®
HUMAN CARE TECHNOLOGY



STANDARD
100
9342CIT
CITEVE

Caution: the displayed colours, due to technical matters, are approximate and may differ from original



Pearl



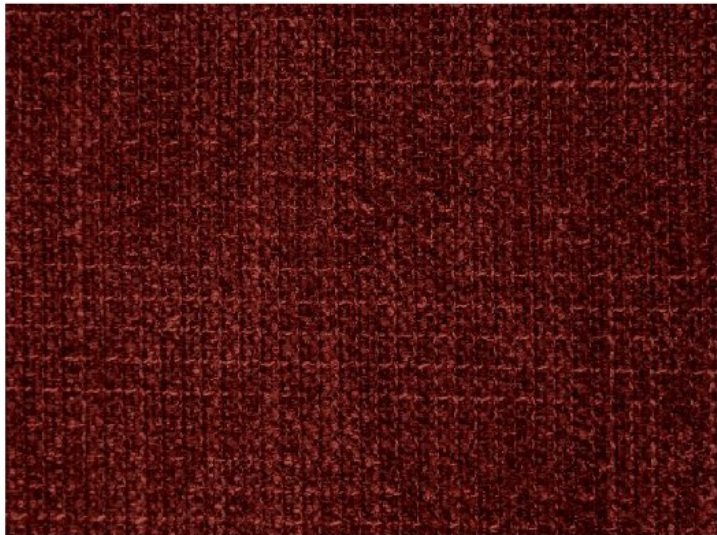
Ivory



Toffee



Pink



Marsala



Deep Purple



Mostaza



Mud



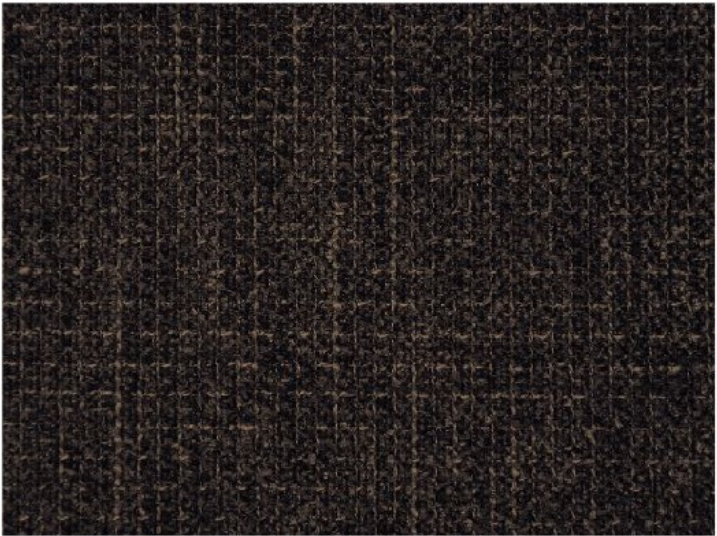
Truffle



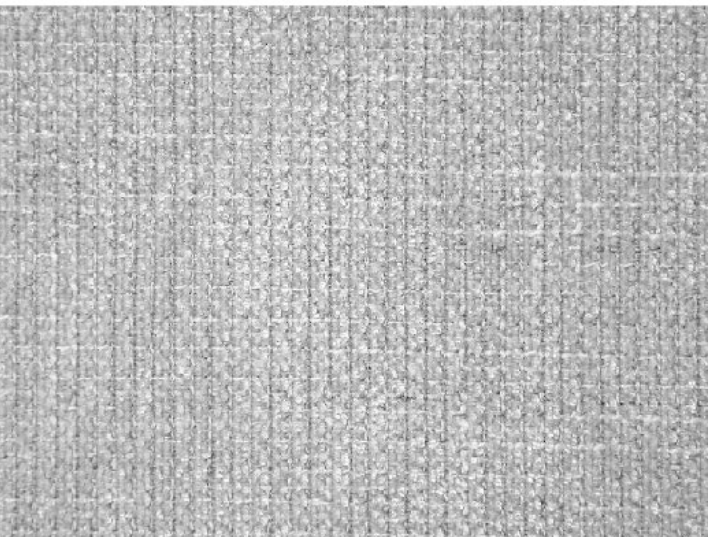
Green



Forest



Chocolate



Cement



Fog



Ocean



Taupe



Anthracite



Black

TRIBU

FABRIC TYPE	COMPOSITION	DURABILITY	LIGHTFASTNESS	PILLING	FEATURES	FIRE TESTS
Chenille	100% Polyester	35,000 Martindale	5	4	Anti-Stain	BS 5852 part 1 - Cigarette Test PASS EN 1021-1 - Cigarette Test PASS CA Tech. Bull. 117:2013 / NFPA 260 - Cigarette Test PASS



BLUEWORLD®
HUMAN CARE TECHNOLOGY



STANDARD
100
9342CIT
CITEVE

Caution: the displayed colours, due to technical matters, are approximate and may differ from original



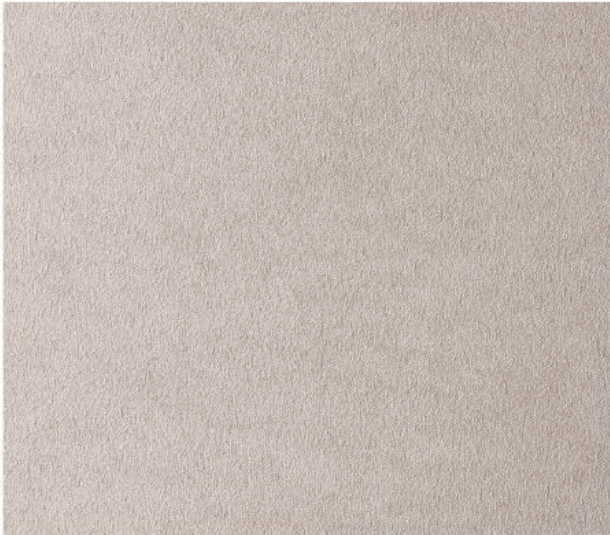
Light Beige



Camel



Caramello



Sand



Caribou



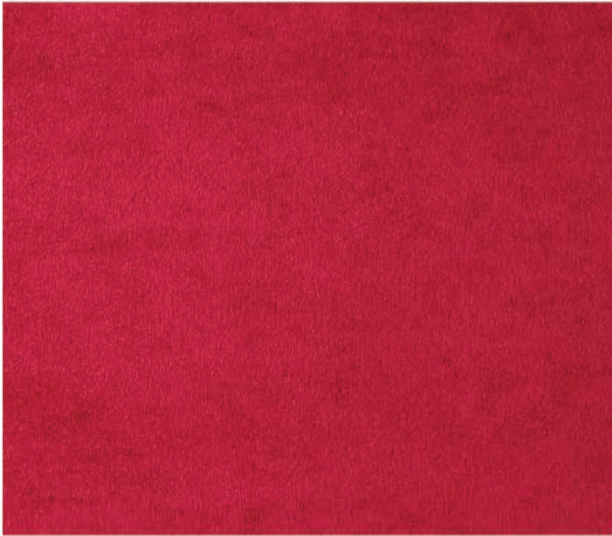
Cuoio



Testa di Moro



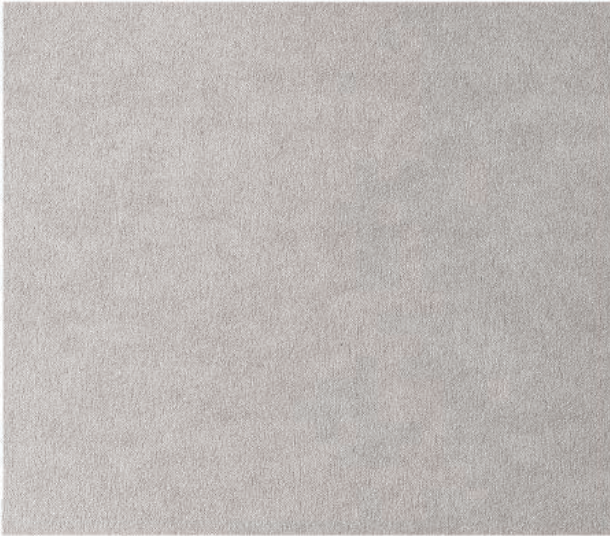
Coral



Cherry



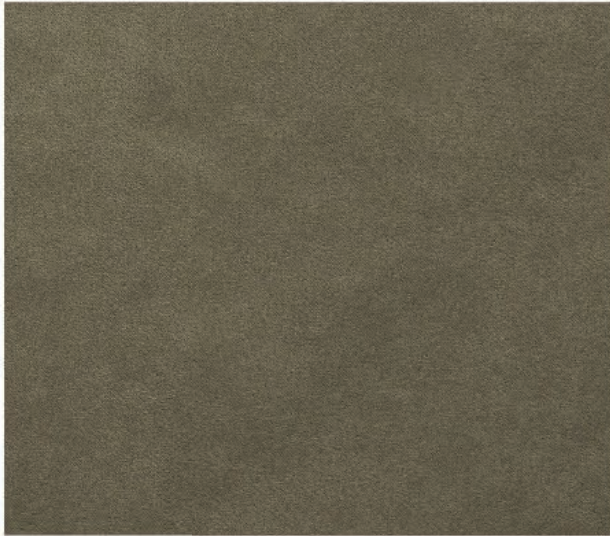
Mostaza



Light Grey



Light Brown



Forest



Moss



Sky



Safira



Blue



Navy



Petrol



Ash



Black

ROYAL SUEDE

FABRIC TYPE	COMPOSITION	DURABILITY	LIGHTFASTNESS	PILLING	FIRE TESTS
Microfibre	100% Polyester	30,000 Martindale	4	4 - 5	BS 5852 part 1 - Cigarette Test PASS EN 1021-1 - Cigarette Test PASS CA Tech. Bull. 117:2013 / NFPA 260 - Cigarette Test PASS

Caution: the displayed colours, due to technical matters, are approximate and may differ from original



Cream



Silver



Almond



Elephant



Ebony



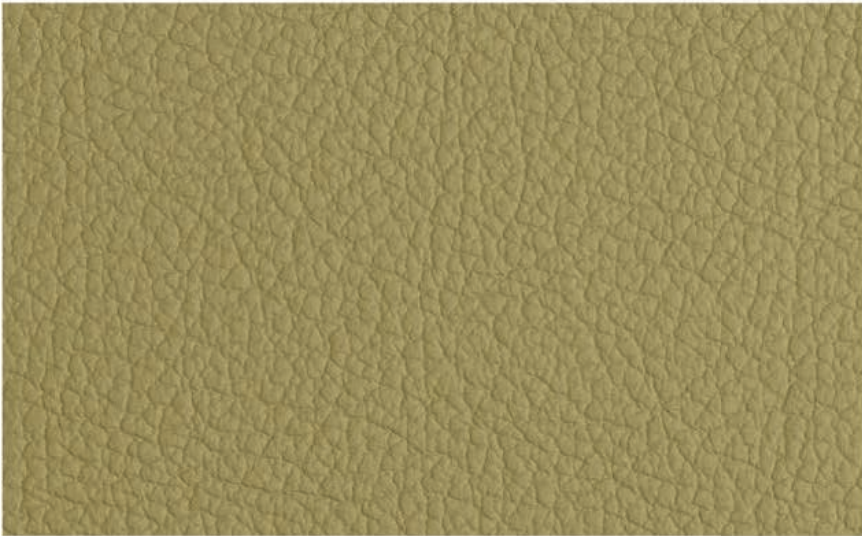
Taupe



Camel



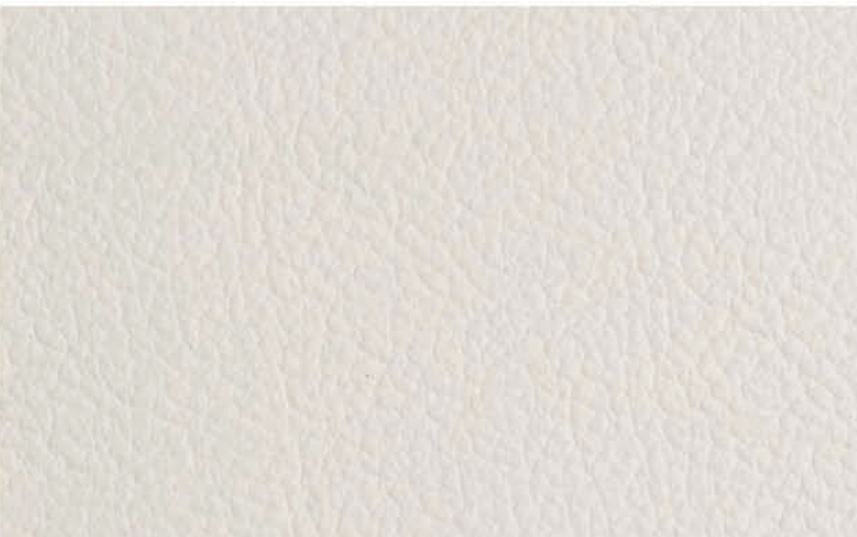
Tabacco



Avocat



Forest



Milk



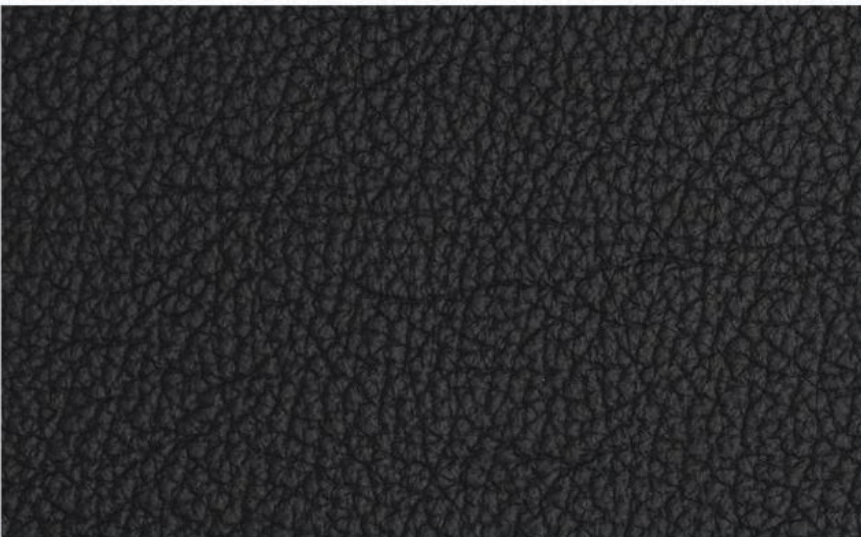
Cement



Ash



Anthracite



Black

FLORIDA

LEATHER TYPE	AVERAGE SKIN THICKNESS	RAWHIDE	PREPARATION	FIRE TESTS
Corrected Leather	0.8 - 1.0 mm	Brazilian Bovine	Corrected and Embossed Grain Protective Top Coat, Soft Handle and Silky Matte Finish	BS 5852:1979 BS EN 1021-1-2:2006

Caution: the displayed colours, due to technical matters, are approximate and may differ from original



White



Lamb



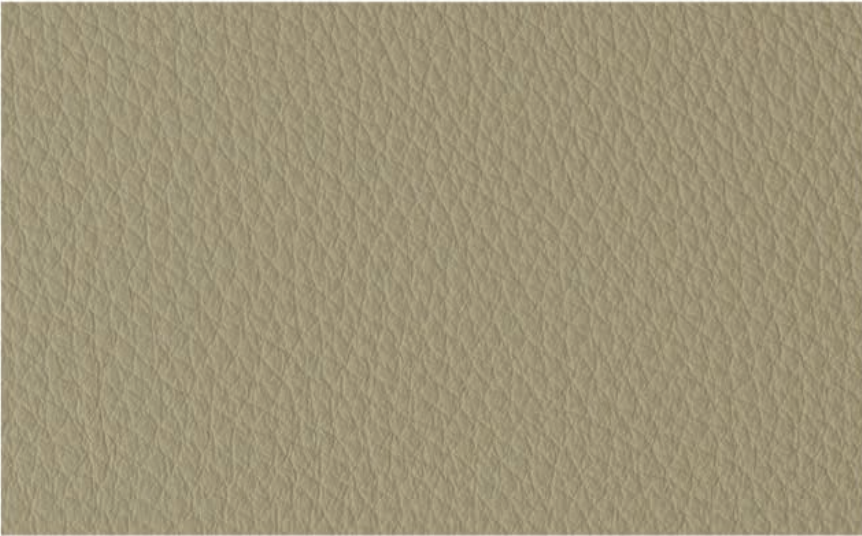
Iceberg



Mouton



Khaki



Earth



Cement



Forest



Woody



Bourgandy



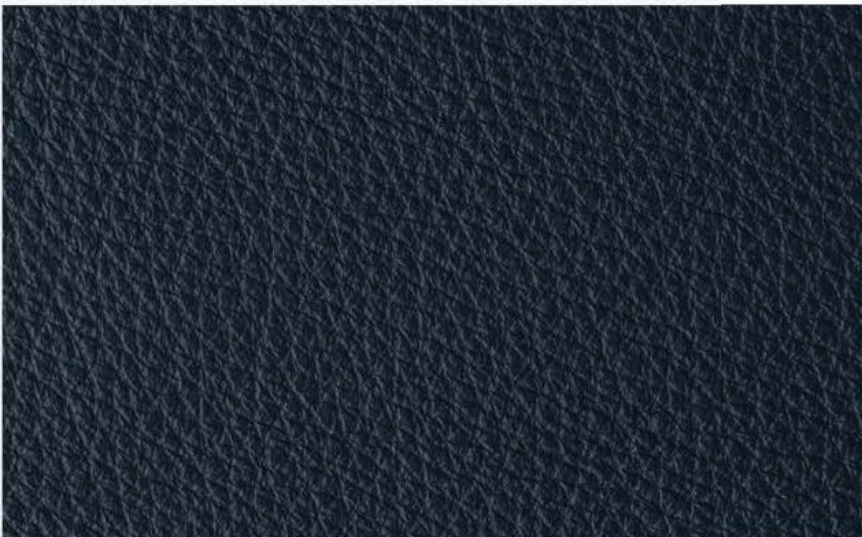
Ash



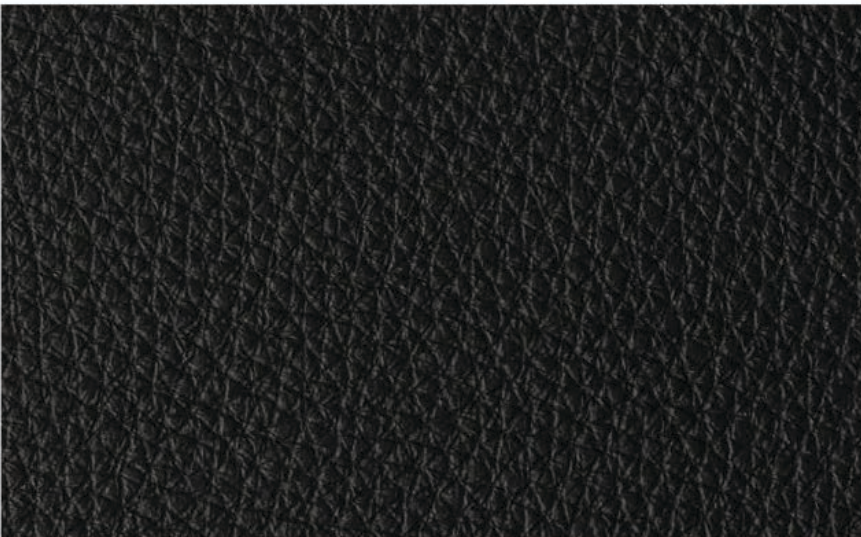
Zine



Fog



Flag



Black

ATLANTIDA

LEATHER TYPE	AVERAGE SKIN THICKNESS	RAWHIDE	PREPARATION	FIRE TESTS
Aniline Leather	1.2 - 1.4 mm	European Bovine	Lightly Buffed Natural Grain	BS 5852:1979 BS EN 1021-1-2:2006

Caution: the displayed colours, due to technical matters, are approximate and may differ from original



Sand



Lion



Camel



Cognac



Yam



Masai



Wine



Caribou



Cement



Toffee



Seapearl



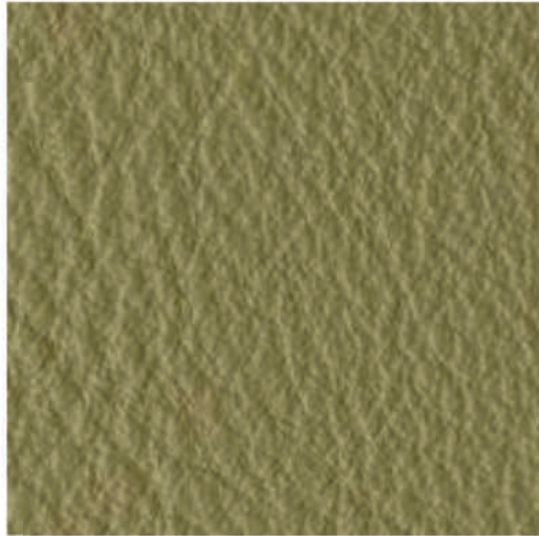
Peral



Stone



Umber



Moss



Bosco



Ivory



White



Ice



Zinc



Shadow



Graphite



Gull



Black

LAGUNA

LEATHER TYPE

Aniline Leather

AVERAGE SKIN THICKNESS

0.9 - 1.1 mm

RAWHIDE

European Bovine

PREPARATION

Lightly Buffed Natural Grain
Transparent Protective Coat, Soft Waxy Feel, Semi-Matte Finish

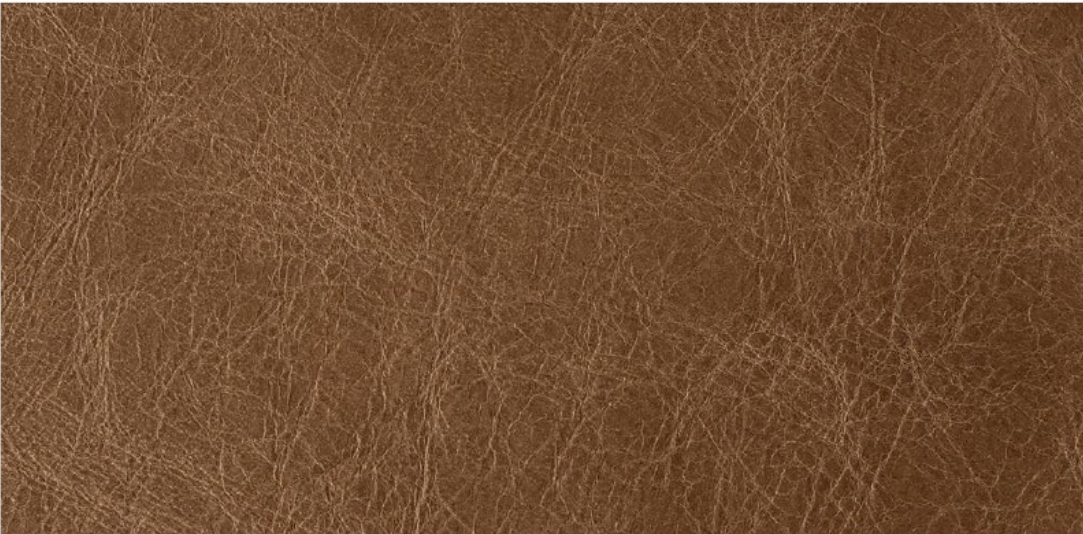
FIRE TESTS

CAL TB-117 (2013, Sec.1)
BS 5852:1979
BS EN 1021-1-2:2006

Caution: the displayed colours, due to technical matters, are approximate and may differ from original



Khaki



Soul



Orange



Bordeaux



Brandy



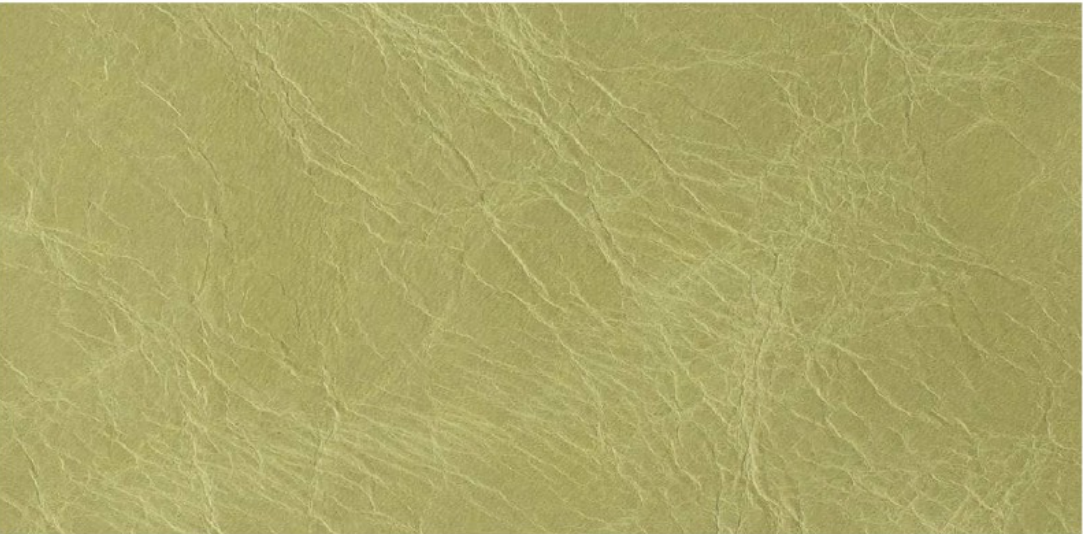
Woody



Truffle



Ebony



Lima



Musk



Sky



Blue

COUNTRY

LEATHER TYPE	AVERAGE SKIN THICKNESS	RAWHIDE	PREPARATION	FIRE TESTS
Waxed Aniline Leather	0.8 - 1.0 mm	European Bovine	Lightly Buffed Natural Grain with Vintage Look Distressed and Semi-Glossy Appearance	BS 5852:1979 BS EN 1021-1-2:2006

Caution: the displayed colours, due to technical matters, are approximate and may differ from original



Pearl



Toffee



Camel



Caramello



Mostaza



Marsala



Nude



Ivory



Cream



Khaki



Taupe



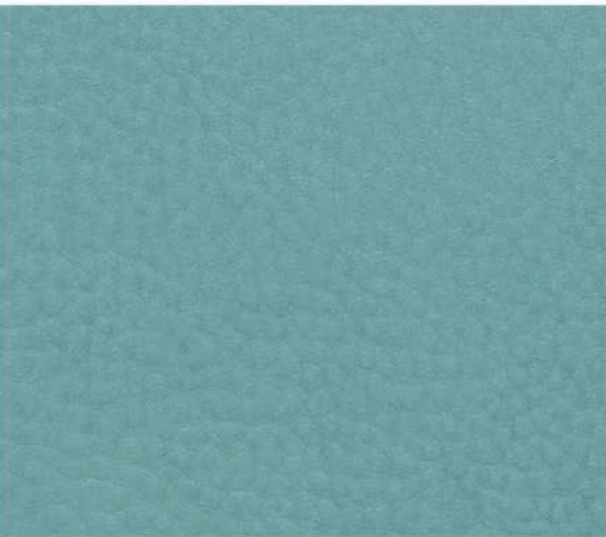
Chocolate



Moss



Elephant



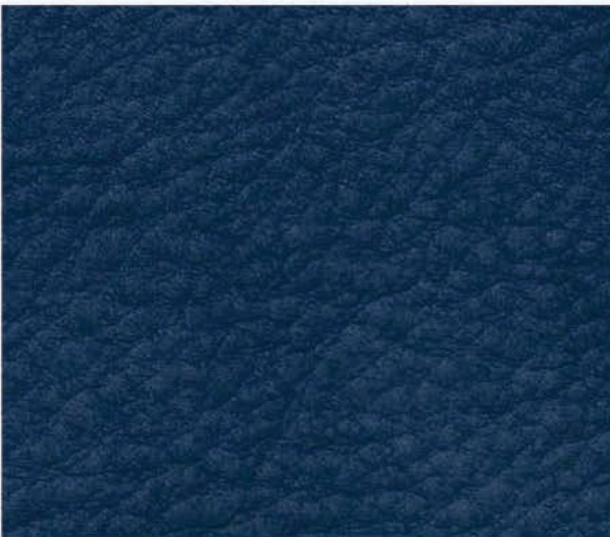
Aquamarine



Emerald



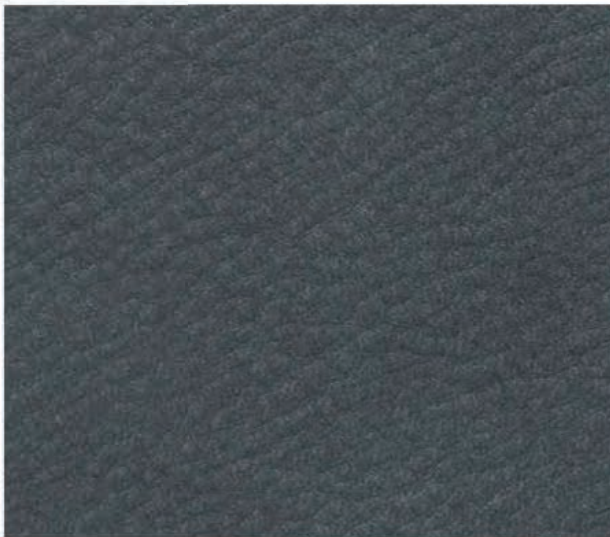
Shark



Ocean



Ash



Anthracite



Black

COLUMBIA

LEATHER TYPE	AVERAGE SKIN THICKNESS	RAWHIDE	PREPARATION	FIRE TESTS
Nubuck Leather	1.2 - 1.4 mm	European Bovine	Natural Grain Aniline Dyed, Suede Look, Liquid Repellent	BS 5852:1979 BS EN 1021-1-2:2006

Caution: the displayed colours, due to technical matters, are approximate and may differ from original

Not all available fabrics and colours are listed on the site. Please contact us if you would like more information on available fabrics and colours.

Email: info@nue-modern.com

www.nue-modern.com